

2025 MONROE CANYON FIRE INCIDENT ACTION PLAN

NOTES:

August 2nd - August 3rd

Saturday/Sunday

0600-0600

UT-FIF-250223



INCIDENT DOCUMENTS

(IAP, Maps, Check-in, Finance, Weather)



Information Email:	2025.MonroeCanyon@firenet.gov
Planning Email:	2025.MonroeCanyon.Planning@firenet.gov
Finance Email:	2025.MonroeCanyon.Finance@firenet.gov
Ordering Email:	2025.MonroeCanyon.Ordering@firenet.gov

0600 - Operational Period Briefing

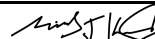

1200 - Command and General Staff Meeting

1630 - Tactics Meeting

1800 - Planning Meeting

1900 - Night Shift Briefing

INCIDENT OBJECTIVES (ICS 202)

1. Incident Name:		2. Operational Period: DAY	
MONROE CANYON		Date/Time From: 08/02/2025 0600 SAT	Date/Time To: 08/03/2025 0600 SUN
3. Objective(s):			
<ul style="list-style-type: none">• Provide for incident responder and public safety through deliberate hazard analysis and application of the risk management process.• Coordinate with cooperators and local stakeholders in an efficient manner regarding protection activities to minimize impacts to the identified values at risk in a fiscally responsible manner.• Identify and protect sensitive species habitat and cultural sites identified by the READ.			
Control Objectives:			
Full suppression with confine/contain/monitor tactics utilized for both direct and indirect line where appropriate.			
Keep fire:			
<ul style="list-style-type: none">• North of Manning Meadows Dam and Northwest of the community of Koosharem.• East of the communities of Monroe and Annabella.• South of the community of Glenwood and Highway SR-119.• West of highways SR-24 and SR-62.			
4. Strategic Framework:			
<ul style="list-style-type: none">• Protection of life and property in areas affected by our incident is our priority. Providing Initial Attack response to all fires within the established TFR. Suppression tactics should be prioritized by threat to property, infrastructure and areas with the highest probability of success protected.			
5. Leaders Expectations:			
Provide a high level of service to all impacted by the Monroe Canyon Fire. All incident assigned personnel will be expected to:			
<ul style="list-style-type: none">• Place personal safety and that of others as the highest priority.• Make risk informed decisions by understanding values to be protected.			
5. Site Safety Plan Required? Yes <input type="checkbox"/> No <input checked="" type="checkbox"/>			
Approved Site Safety Plan(s) Located at:			
6. Incident Action Plan (the items checked below are included in this Incident Action Plan):			
<div><div><div><input checked="" type="checkbox"/> ICS 202</div><div><input checked="" type="checkbox"/> ICS 203</div><div><input checked="" type="checkbox"/> ICS 204</div><div><input checked="" type="checkbox"/> ICS 205</div><div><input type="checkbox"/> ICS 205A</div><div><input checked="" type="checkbox"/> ICS 206</div></div><div><div><input type="checkbox"/> ICS 207</div><div><input type="checkbox"/> ICS 208</div><div><input checked="" type="checkbox"/> ICS 220</div><div><input checked="" type="checkbox"/> Map/Chart</div><div><input checked="" type="checkbox"/> Weather Forecast/Tides/Currents</div></div></div> <div>Other Attachments:<div><input type="checkbox"/></div><div><input type="checkbox"/></div><div><input type="checkbox"/></div><div><input type="checkbox"/></div></div>			
7. Prepared by: MICHAEL KLASSEN		Position/Title: PSCC	Signature: 
8. Approved by Incident Commander:		Name: WAYNE RUSHING	Signature: 
ICS 202		IAP Page	Date/Time: 08/01/2025 2000



Letter from Great Basin Team 5 Incident Commander:

To All Monroe Canyon Fire Personnel,

As Great Basin Team 5 Incident Commander, I am committed to a policy of “zero tolerance” of inappropriate behavior during incident operations. Any form of harassment, discriminatory practices, or disrespectful behavior will not be tolerated.

Guidelines on inappropriate behavior, both on duty and off duty, while assigned are addressed within each agency’s policies. Our Team expects all incident personnel to follow established government policies for behavior, along with all illegal drug and alcohol directives.

Our Incident Management Team endorses and supports an attitude of mutual respect for all personnel and the public we serve.

We expect a strong work ethic and an attitude of safety at all times!

Sincerely,


Trent Ingram

/s/ Trent Ingram

Incident Commander

Great Basin Team 5 Complex Incident Management Team

ORGANIZATION ASSIGNMENT LIST (ICS 203)

1. Incident Name:		2. Operational Period: DAY/NIGHT	
MONROE CANYON		Date/Time From: 08/02/2025 0600 SAT	Date/Time To: 08/03/2025 0600 SUN
3. Incident Commander(s) and Command Staff:		FOOD UNIT T. GOODELL; S. NAUER	
INCIDENT COMMANDER	TRENT INGRAM	SECURITY UNIT B. JENSEN	
DEPUTY	GWEN SANCHEZ; WAYNE RUSHING(T)	7. Operations Section:	
LIAISON OFFICER	JEREMY HALES; M. WILSON; J. GIDDENS (T); E. WOOTEN (T)	OPS SECTION CHIEF	ISAAC POWNING; KORBY FRAUGHTON (T)
SAFETY OFFICER	PAUL GAUCHAY; G. CHRISTENSEN; D. PROBERT (T)	FIELD OPS CHIEF	ERIC NOLAN; DONOVAN WALKER (T)
INFORMATION OFFICER	JAMES BARTLETT; A. ARCHULETTA (T); A. FARINACCI (T)	STRATEGIC OPS	CODY MANDEVILLE
MEDICAL UNIT	TEMPLE FLETCHER; G. STALLINGS; S. BROGNA (T); L. BAKER (T)	NIGHT OPS.	JASON PACKARD
4. Agency/Organization Representative(s):		Branch I	
Agency/Organization	Name	BRANCH DIRECTOR MIKE BOWDEN	
UTAH FFSL	THOMAS PETERSON	DIVISION/GROUP	A D. ZACH; K. JAKUBOS (T)
USFS	JASON KLING; MIKE ELSON	DIVISION/GROUP	D T. HUNT
BLM	DAVE MORTENSEN; JOSH WINKLER	Branch II	
LEAD READ	AARON ZOBEL	BRANCH DIRECTOR CORY CARLSON	
BIA	SCOTTIE PINA III	DIVISION/GROUP	E J. PERHACS; D. DOMIS (T)
5. Planning Section:		DIVISION/GROUP	G R. DICKINSON; J. MCCURLEY (T)
CHIEF	M. KLASSEN; S. ALLEN; J. PROKOSCH(V); J. LINTZENICH(T)	DIVISION/GROUP	K TJ GHOLSON
SITUATION UNIT	C. EVANS; B. DAVIS; B. SLICE (T); J. GARTSIDE (T)	Branch III	
GIS SPECIALIST	S. FROST; A. WHITE; S. WILDER; K. KASKI; M. DISKIN (V); M. PEEVERS (T)	BRANCH DIRECTOR JEFFREY SURBER	
FIRE BEHAVIOR ANALYST	J.KERN	DIVISION/GROUP	M J. CLASS; M. FOGARTY (T)
TECHNOLOGY SUPPORT SPECIALIST	J. KIRCHMEIER; L. BALLARD; C. NELSON (T)	DIVISION/GROUP	W T. ANDERSON; W. CREEDEN (T)
INCIDENT METEOROLOGIST	M. LOEFFELBEIN; C. CRAVENS (T)	DIVISION/GROUP	Z S. PACE; E. ARNOLD (T)
RESOURCES UNIT	C. WOODCOCK; L. BRAUNSCH; Z. SUMRALL (T)	Branch VII	
DEMOBILIZATION UNIT	W. CHRISTOPHER	BRANCH DIRECTOR DAVE CROUSSER	
TRAINING SPECIALIST	B. LAMPHIEA	DIVISION/GROUP	BEAR VALLEY CONTINGENCY J. BERGFELD; R. COZAD (T)
DOCUMENTATION UNIT	A. KLING (V)	DIVISION/GROUP	STRUCTURE GROUP S. THIME; P. MITCHELL (T)
HUMAN RESOURCE SPECIALIST	T. BUCHHOLZ	Branch NIGHT OPERATIONS	
6. Logistics Section:		DIVISION/GROUP	NIGHT EAST K. MATTHEWS
CHIEF	STEVE FLETCHER; GLENN CHAPPELL	DIVISION/GROUP	NIGHT WEST J. BEYUKA
FACILITIES UNIT	S. KING-POWERS; E. LURIE	7b. Air Operations Branch:	
SUPPLY UNIT	K. STONE	AIR OPS BRANCH DIRECTOR	JOHN SHAFFER
ORDERING MANAGER	K. STONE; TJ LITTLE (T)	8. Finance/Administration Section:	
GROUND SUPPORT UNIT	G. BELL; C. BRACKEN (T)	CHIEF	ROBYN FITZGERALD
COMMUNICATIONS UNIT	P. NOA	DEPUTY	S. DENNIS (T)
9. Prepared By:		TIME UNIT	L. YOUNG; G. MCCABE
ICS 203	IAP Page	COMPENSATION UNIT	L. HADLOCK
Name: JEFF PROKOSCH		COST UNIT	S. KNOTTS
Position/Title: PSCC		Signature: 	
Date/Time: 08/01/2025 1700			



Fire Weather Forecast

Link to nearby obs



FORECAST NO: 18
PREDICTION FOR: Saturday's Operational Period
SHIFT DATE: Aug 2- Aug 3, 2025 0600-0600
TIME AND DATE ISSUED: Aug 1, 2025 1700

INCIDENT: Monroe Canyon
UNIT: Fishlake NF
SIGNED: *Mark Leoffelbein* Mark Leoffelbein
Incident Meteorologist (IMET)
Caleb Cravens Caleb Cravens
Incident Meteorologist Trainee

Weather observations can be texted to 931-510-9062 or emailed to caleb.cravens@noaa.gov

****RED FLAG WARNING - UNTIL 10 PM****

Discussion:

Our 8th Red Flag Warning is in effect through 10 PM tonight. Poor overnight relative humidity recoveries will once again lead to afternoon min RHs below 10 percent. Winds will continue to gust from the southwest up to 30 mph through the afternoon. Expect any local inversions with good humidity recoveries to mix out by 0900 and stronger upper-level winds to mix down by 1200. The atmosphere will be highly unstable today so pyrocumulus clouds could develop through the afternoon with the right fuel conditions. There is a 10% chance of dry thunderstorm development after 1200, which could result in gusty and erratic outflow winds.

TODAY:

	6,800' (ICP)	7,500'	9,500' (Magleby)
Sky/Weather	Mostly Sunny (0-15%). 10% Ch. of Thunderstorms		
Max Temp	86-91°F	83-88°F	72-77°F
Min RH	9-14%	5-10%	5-10%
Wind (20 ft)	SW 6-10 mph, gusts 15-20 mph	Upslope/Upvalley until 1200, then WSW 6-12 mph, gusts 20-30 mph	
Chance of Lightning	10%	Chance of Wetting Rain	0%

TONIGHT:

	6,800' (ICP)	7,500'	9,500' (Magleby)
Sky/Weather	Mostly Clear with Poor RH Recoveries		
Min Temp	38-43°F	55-62°F	45-50°F
Max RH	40-50%	18-25%	35-40%
Wind (20 ft)	Light SE	Downslope/Downvalley 6-10 mph	Downslope/Downvalley 5-9 mph, gusts to 12
Inversion	1300' AGL after 2100		

SUNDAY:

	6,800' (ICP)	7,500'	9,500' (Magleby)
Sky/Weather	Mostly Sunny (0-20%). Critical Fire Weather Conditions		
Max Temp	83-88°F	83-88°F	70-75°F
Min RH	10-15%	6-10%	11-15%
Wind (20 ft)	SW 10-15 mph, gusts 20-25 mph	Upslope/Upvalley until 1200, then WSW 10-15 mph, gusts 15-20 mph	
Chance of Lightning	10%	Chance of Wetting Rain	0%

OUTLOOK FOR MONDAY THROUGH WEDNESDAY: Critical fire weather continues through early next week. Highs will range from the low-70s above 9,000' to near 90 at 6,500'. During the afternoons, min RH remains in the single digits to teens across most areas. Wind gusts slightly weaken up to 20 mph. There is a low chance (10%) of dry lightning as the atmosphere remains unstable through the forecast period.

FIRE BEHAVIOR FORECAST

FORECAST NUMBER: 17	TYPE OF FIRE: Wildland Fire
FIRE NAME: Monroe Canyon	OPERATIONAL PERIOD: 08/02-08/03: 0600-0600
DATE ISSUED: August 1, 2025	TIME ISSUED: 1900
UNIT: UT-FIF	SIGNED: John Kern – FBAN 352-428-8239

WEATHER

RED FLAG WARNING

SEE IMET FIRE WEATHER FORECAST

*Local weather thresholds that shout **WATCH OUT**: Temperatures above 85°, relative humidity below 20%, eye level winds over 10 mph*

FUELS

Fuels transition from mixed conifer to brushy fuels that include conifer, gamble oak, mountain mahogany, and sagebrush as you move closer to the valley floor. These fuels are extremely dry and burn with high intensity. Resistance to control will be high and an increased amount of effort will be needed for containment.

Fuels Moistures at critical levels with 100-hour and 1000-hour dead fuel moistures below 10%.
ERC is near or above the 100th percentile. Setting historical maximums.

FIRE BEHAVIOR

General Fire Behavior:

Hot, dry, windy conditions are all elements for rapid fire growth. Many of the fuels have low branches that serve as ladder fuels leading easily to torching of embers. Continuous brushy fuels are critically dry, triggering fire behavior seen only during the driest and most severe fire seasons. Peak fire behavior will start around 1200, be fully active by 1430 at the latest, and burn all night. Flame lengths in brush fuels will be over 20 feet with rapid rates of spread.

Severe Fire Danger Index – Very High

	Rate of Spread	Flame Length
V. High Load Dry Timber-Shrub TU5	10-15 ch/hr	8-12'
High Load Dry Shrub (large juniper) SH4	60-80 ch/hr	14-18'
Mod. Load Dry Grass Shrub (lower sage/juniper) GS2	25-30 ch/hr	5-9'

*Fine Dead Fuel Moisture: 3% ERC Over 98th Percentile
Probability of Ignition 90-100%, Spotting 1/2 – 3/4 mile with wind gust*

Specific Fire Behavior:

BRANCH I: Wind driven fire behavior with spotting again. Fire burning in flashy fuels at the bottom of the slopes near Poverty Flats will burn with high rates of spread. Heavy equipment and aircraft are highly effective in this fuel type. The fire can back down slopes and set itself up for intense uphill runs.

BRANCH II: This area of the fire has generally denser fuels due to aspect. This will facilitate fire spread to the north with great intensity. The fire will continue to be active around Burville and Hwy 24. On the other end of the branch, the potential for impacts to structures around Long Flat will remain due to spotting and the potential for additional flare-ups.

BRANCH III: Heavy dead down will continue to be an issue. These fuels are at historic dryness levels. Resistance to containment will continue to be high. Watch for upslope fire behavior with spotting if the fire were to cross the North Fork of Box Creek in DIV Z. Other areas will see backing and flanking fire behavior as the fire continues to move downslope in brushy fuels.

Night: The fire has the potential to move closer to structures, road corridors, and other hazards within the WUI. Expect active fire behavior in heavy fuels with spotting near structures at higher elevations, and moderate fire activity at lower elevations. This will last until around 0200.

Safety

Torching trees and shrubs will create lift and launch fire embers.
Watch for non-fire related hazards within your workspace.

Division/Group Assignment List (ICS 204 WF)

Controlled Unclassified Information//Basic

1. Incident Name:				3.			
MONROE CANYON				Branch: I		Division/Group: A	
2. Operational Period: DAY/NIGHT							
Date/Time From: 08/02/2025 0600 SAT		Date/Time To: 08/03/2025 0600 SUN					
4. Operations Personnel							
FIELD OPERATIONS CHIEF		ERIC NOLAN DONOVAN WALKER (T)		BRANCH DIRECTOR		MIKE BOWDEN	
DIVISION/GROUP SUPERVISOR		DAN ZACH KEVIN JAKUBOS (T)					
5. Resources Assigned this Period							
Strike Team / Task Force / Resource Designator	LWD	Leader	Number Persons	Drop Off PT./Time	Pick Up PT./Time		
C-42 CRW1 LEWIS & CLARK IHC	08/10	NICHOLAS PAUL WYDRA	22	SNOW COLLEGE/0600	SNOW COLLEGE/2200		
C-23 CRW2 WEST COAST REFORESTATION	08/12	BENJAMIN MARTINEZ	20	SNOW COLLEGE/0600	SNOW COLLEGE/2200		
C-40 CRW2 TRI CITIES FORESTRY	08/14	JOSE TAPIA	20	SNOW COLLEGE/0600	SNOW COLLEGE/2200		
E-69 ENG6 DAMMERON VALLEY FD B1351	08/11	JOYCE MANSON	8	SNOW COLLEGE/0600	SNOW COLLEGE/2200		
E-124 ENG6 LAKETOWN FD BR31	08/12	RICK LARSEN	2	SNOW COLLEGE/0600	SNOW COLLEGE/2200		
E-119 ENG4 RED TRUCK WILDFIRE LLC	08/13	NICK CARNEY	3	SNOW COLLEGE/0600	SNOW COLLEGE/2200		
E-90 MBM2 PRO INC	08/12	DAVID ROE	2	SNOW COLLEGE/0600	SNOW COLLEGE/2200		
E-109 MBM2 NVELD 102716	08/13	TYLER CENTER	2	SNOW COLLEGE/0600	SNOW COLLEGE/2200		
O-87 HEQB	08/11	JEREMY COX	1	SNOW COLLEGE/0600	SNOW COLLEGE/2200		
O-5160 HEQB	08/09	SETH GREENE	1	SNOW COLLEGE/0600	SNOW COLLEGE/2200		
O-5161 HEQB	08/09	JASON LOOS	1	SNOW COLLEGE/0600	SNOW COLLEGE/2200		
O-5191 WFM2 TUSHAR MOUNTAIN	08/09	NICK SCHENCK	10	SNOW COLLEGE/0600	SNOW COLLEGE/2200		
O-5140 SOFC	08/02	BRUCE MALLOY	1	SNOW COLLEGE/0600	SNOW COLLEGE/2200		
E-6165 AMB1 MED TRANSPORT INC	08/12	MAKENZIE TIEGS	2	SNOW COLLEGE/0600	SNOW COLLEGE/2200		
O-5106 EMPF	08/02	JAMES BURNS	1	SNOW COLLEGE/0600	SNOW COLLEGE/2200		
O-150 EMPF	08/14	CHAD POULSEN	1	SNOW COLLEGE/0600	SNOW COLLEGE/2200		
8. Division/Group Communication Summary							
Function	Channel	RX Frequency N/W	RX Tone/NAC	TX Frequency N/W	TX Tone/NAC	Mode	
TACTICAL	4	166.7250	146.2	166.7250	146.2	A	
COMMAND	8	170.6875	146.2	166.5750	146.2	A	
AIR TO GROUND	13	170.5000		170.5000		A	
AIR TO GROUND	14	166.3250	146.2	166.3250	146.2	A	
9. Prepared By (Resource Unit Leader)		Approved By (Planning Section Chief)			Date		Time
LELA BRAUNSCH		MIKE KLASSEN			08/01/2025		2000

Division/Group Assignment List (ICS 204 WF)

Controlled Unclassified Information//Basic

1. Incident Name:				3.			
MONROE CANYON				Branch: I		Division/Group: A	
2. Operational Period: DAY/NIGHT							
Date/Time From: 08/02/2025 0600 SAT		Date/Time To: 08/03/2025 0600 SUN					
4. Operations Personnel							
FIELD OPERATIONS CHIEF		ERIC NOLAN DONOVAN WALKER (T)		BRANCH DIRECTOR		MIKE BOWDEN	
DIVISION/GROUP SUPERVISOR		DAN ZACH KEVIN JAKUBOS (T)					
5. Resources Assigned this Period							
Strike Team / Task Force / Resource Designator		LWD	Leader	Number Persons	Drop Off PT./Time	Pick Up PT./Time	
6. Control Operations/Work Assignments:							
<p>TASK: Prep the Willow Springs Road to burn and/or hold the fire on the road, working south down to Durkey Springs Road. Prep Durkey Springs Road working south. Begin mastication on proposed containment line. Start prepping BLM 7934 Road from the bottom.</p> <p>PURPOSE: Keep fire east of established containment lines to prevent western growth of the fire towards Monroe.</p> <p>END STATE: Fire is held to established control lines and closed areas are reopened.</p>							
7. Special Instructions:							
<ul style="list-style-type: none"> • For planned dozer line operations, get proposed locations uploaded in Field Maps 24-48 hours ahead of time. • Defensive and direct suppression operations are approved on all federal lands; notify READs of implementation. • Archaeologist - Emily Swett - 435-531-7186, Roy Plank - 307-620-9950, Kandi Ruton - 435-253-4088. • READ(T) - McCall Davis, 435-310-0123, Mark Dean, 435-253-0978. • Use caution when working with Heavy Equipment. See Working with Heavy Equipment on p.87 of the IRPG. • REMS 3 is a resource for all of Branch I. • Refer to the Monroe Fire Water Tenders and Engines Aquatic Invasive Water protocol if drafting from the Manning or Box Watersheds. 							
8. Division/Group Communication Summary							
Function	Channel	RX Frequency N/W	RX Tone/NAC	TX Frequency N/W	TX Tone/NAC	Mode	
TACTICAL	4	166.7250	146.2	166.7250	146.2	A	
COMMAND	8	170.6875	146.2	166.5750	146.2	A	
AIR TO GROUND	13	170.5000		170.5000		A	
AIR TO GROUND	14	166.3250	146.2	166.3250	146.2	A	
9. Prepared By (Resource Unit Leader)			Approved By (Planning Section Chief)			Date	Time
LELA BRAUNSCH			MIKE KLASSEN			08/01/2025	2000

Division/Group Assignment List (ICS 204 WF)

Controlled Unclassified Information//Basic

1. Incident Name:				3.			
MONROE CANYON				Branch: I		Division/Group: D	
2. Operational Period: DAY/NIGHT							
Date/Time From: 08/02/2025 0600 SAT		Date/Time To: 08/03/2025 0600 SUN					
4. Operations Personnel							
FIELD OPERATIONS CHIEF		ERIC NOLAN DONOVAN WALKER (T)		BRANCH DIRECTOR		MIKE BOWDEN	
DIVISION/GROUP SUPERVISOR		TREVER HUNT					
5. Resources Assigned this Period							
Strike Team / Task Force / Resource Designator		LWD	Leader	Number Persons	Drop Off PT./Time	Pick Up PT./Time	
C-7043 CRW1 LOS PADRES IHC		08/09	MATT AOKI	21	SNOW COLLEGE/0600	SNOW COLLEGE/2200	
C-16 CR21 PATRICK ENVIRONMENTAL, INC.		08/08	LEVI MILLER	20	SNOW COLLEGE/0600	SNOW COLLAGE/2200	
C-7011 CRW2 J & SONS		08/14	RODRIGO BEDOLLA	20	SNOW COLLEGE/0600	SNOW COLLEGE/2200	
E-5 ENG3 GREAT BASIN		08/11	HAL STOKER	3	SNOW COLLEGE/0600	SNOW COLLEGE/2200	
E-7 ENG3 IDAHO HEATSEEKER 22		08/13	IAN ROGGIO	3	SNOW COLLEGE/0600	SNOW COLLEGE/2200	
E-6120 ENG4 IDAHO HEATSEEKER 16		08/10	CHANCE KERSTIENS	3	SNOW COLLEGE/0600	SNOW COLLEGE/2200	
E-6125 ENG4 ATLAS 402		08/11	GEORGE HALL	3	SNOW COLLEGE/0600	SNOW COLLEGE/2200	
* E-9 ENG6 MASWEL		08/10	TIM MCDONALD	3	SNOW COLLEGE/0600	SNOW COLLEGE/2200	
E-6067 ENG6 PRO TEMPS E116		08/14	BOB MAHARREY	3	SNOW COLLEGE/0600	SNOW COLLEGE/2200	
E-6095 DZR2 DODGE BOYS		08/03	JACOB DODGE	2	SNOW COLLEGE/0600	SNOW COLLEGE/2200	
E-116 CHP2 COLOR COUNTRY TREE SERVICE		08/13	TRAVIS HUNTER	3	SNOW COLLEGE/0600	SNOW COLLEGE/2200	
O-5088 TFLD		08/03	ANDREW BRAUN	1	SNOW COLLEGE/0600	SNOW COLLEGE/2200	
O-5099 TFLD (T)		08/03	CHARLES DAVIS	1	SNOW COLLEGE/0600	SNOW COLLEGE/2200	
O-5085 HEQB		08/02	TYLER ISHLER	1	SNOW COLLEGE/0600	SNOW COLLEGE/2200	
O-5096 HEQB (T)		08/02	WILLIAM READ	1	SNOW COLLEGE/0600	SNOW COLLEGE/2200	
O-5110 REMS 3 ALPINE		08/02	TEVIN PELLONI	4	SNOW COLLEGE/0600	SNOW COLLEGE/2200	
O-81 EMPF		08/12	ERIC DUTTON	1	SNOW COLLEGE/0600	SNOW COLLEGE/2200	
A-54 UMOD UAS UR-31		08/03	RYAN MCCOLLIN	1	SNOW COLLEGE/0600	SNOW COLLEGE/2200	
O-146 EMPF FRONT LINE EMS LLC		08/14	CLINTON MURPHY	1	SNOW COLLEGE/0600	SNOW COLLEGE/2200	
8. Division/Group Communication Summary							
Function	Channel	RX Frequency N/W	RX Tone/NAC	TX Frequency N/W	TX Tone/NAC	Mode	
TACTICAL	2	168.2000	146.2	168.2000	146.2	A	
COMMAND	7	169.7500	146.2	167.1000	146.2	A	
COMMAND	8	170.6875	146.2	166.5750	146.2	A	
AIR TO GROUND	13	170.5000		170.5000		A	
AIR TO GROUND	14	166.3250	146.2	166.3250	146.2	A	
9. Prepared By (Resource Unit Leader)			Approved By (Planning Section Chief)			Date	Time
LELA BRAUNSCH			MIKE KLASSEN			08/01/2025	2000

Division/Group Assignment List (ICS 204 WF)

Controlled Unclassified Information//Basic

1. Incident Name:				3.			
MONROE CANYON				Branch: I		Division/Group: D	
2. Operational Period: DAY/NIGHT							
Date/Time From: 08/02/2025 0600 SAT		Date/Time To: 08/03/2025 0600 SUN					
4. Operations Personnel							
FIELD OPERATIONS CHIEF		ERIC NOLAN DONOVAN WALKER (T)		BRANCH DIRECTOR		MIKE BOWDEN	
DIVISION/GROUP SUPERVISOR		TREVER HUNT					
5. Resources Assigned this Period							
Strike Team / Task Force / Resource Designator		LWD	Leader	Number Persons	Drop Off PT./Time	Pick Up PT./Time	
O-158 SOFC		08/15	CHARLES DAVIS	1	SNOW COLLEGE/0600	SNOW COLLEGE/2200	
E-6104 VUTV OUTBACK FIREFIGHTING					SNOW COLLEGE/0600	SNOW COLLEGE/2200	
6. Control Operations/Work Assignments:							
<p>TASK: Prep and fire the 78 Road from DP 83 Down to DP 86. Continue prep in first left-hand fork utilizing masticator. Finish installing hoselay and pump for firing if needed from Hunts Lake to Dry Canyon. Continue to patrol from Oak Flat to Hunts Lake.</p> <p>PURPOSE: Protect private property to the west of the fire by limiting growth with containment lines. Provide highest probability of success to protect private property and Monroe City with successful, redundant suppression and mitigation efforts.</p> <p>END STATE: Little to no impact to private property, fire kept to smallest footprint possible with given conditions. Public land damage minimized. Impact to public from fire, smoke, and suppression efforts kept to minimum.</p>							
7. Special Instructions:							
<ul style="list-style-type: none"> * IA Resource For planned dozer line operations, get proposed locations uploaded in Field Maps 24-48 hours ahead of time. Defensive and direct suppression operations are approved on all federal lands; notify READs of implementation. Archaeologist - Emily Swett - 435-531-7186, Roy Plank - 307-620-9950, Kandi Ruton - 435-253-4088. READ(T) - McCall Davis, 435-310-0123 Use caution when working in WUI areas and around powerlines. See Wildland Urban Interface (WUI) Firefighting on p. 11, and Powerline Safety on p. 22 of the IRPG. REMS 3 is a resource for all of Branch I. Refer to the Monroe Fire Water Tenders and Engines Aquatic Invasive Water protocol if drafting from the Manning or Box Watersheds. Local engine will tie in daily. 							
8. Division/Group Communication Summary							
Function	Channel	RX Frequency N/W	RX Tone/NAC	TX Frequency N/W	TX Tone/NAC	Mode	
TACTICAL	2	168.2000	146.2	168.2000	146.2	A	
COMMAND	7	169.7500	146.2	167.1000	146.2	A	
COMMAND	8	170.6875	146.2	166.5750	146.2	A	
AIR TO GROUND	13	170.5000		170.5000		A	
AIR TO GROUND	14	166.3250	146.2	166.3250	146.2	A	
9. Prepared By (Resource Unit Leader)			Approved By (Planning Section Chief)			Date	Time
LELA BRAUNSCH			MIKE KLASSEN			08/01/2025	2000

Division/Group Assignment List (ICS 204 WF)

Controlled Unclassified Information//Basic

1. Incident Name:				3.			
MONROE CANYON				II		E	
2. Operational Period: DAY/NIGHT							
Date/Time From: 08/02/2025 0600 SAT		Date/Time To: 08/03/2025 0600 SUN					
4. Operations Personnel							
FIELD OPERATIONS CHIEF		ERIC NOLAN DONOVAN WALKER (T)		BRANCH DIRECTOR		CORY CARLSON	
DIVISION/GROUP SUPERVISOR		JOHN PERHACS; DEREK DOMIS (T)					
5. Resources Assigned this Period							
Strike Team / Task Force / Resource Designator	LWD	Leader	Number Persons	Drop Off PT./Time	Pick Up PT./Time		
C-7026 CRW1 CEDAR CITY IHC	08/03	JOHN HUNT	22	SNOW COLLEGE/0600	SNOW COLLEGE/2200		
C-7035 CRW1 BOISE IHC	08/07	DAVID ROGAN	20	SNOW COLLEGE/0600	SNOW COLLEGE/2200		
C-18 CR2I PAT RICK3B	08/07	BEN BEARD	20	SNOW COLLEGE/0600	SNOW COLLEGE/2200		
C-41 CR2I SALT LAKE 1	08/10	LYLE JENNINGS	23	SNOW COLLEGE/0600	SNOW COLLEGE/2200		
C-33 CRW2 ALPINE SERVICES LLC	08/14	JAY TORRES	20	SNOW COLLEGE/0600	SNOW COLLEGE/2200		
E-167 ENG3 UTUWF E371	08/14	GARET HENRY	10	SNOW COLLEGE/0600	SNOW COLLEGE/2200		
E-117 ENG4 IDTFD E2424	08/13	MIGUEL A MARTINEZ	5	SNOW COLLEGE/0600	SNOW COLLEGE/2200		
E-162 ENG4 GREAT BASIN FIRE LLC -	08/15	BRAXTON TURNER	3	SNOW COLLEGE/0600	SNOW COLLEGE/2200		
E-161 ENG5 BLACK CEDAR FIRE	08/14	DUSTIN SHOFFNER	3	SNOW COLLEGE/0600	SNOW COLLEGE/2200		
E-158 ENG6 ENG6 - TORCH FIRE AND SECURITY, LLC - B47198	08/15	GEORGE CATRON	3	SNOW COLLEGE/0600	SNOW COLLEGE/2200		
E-165 ENG6 GREAT BASIN FIRE LLC - B34202	08/14	KEVIN KLAS	3	SNOW COLLEGE/0600	SNOW COLLEGE/2200		
E-166 ENG6 OUTBACK FIREFIGHTING, INC	08/14	MICHAEL TERRY	3	SNOW COLLEGE/0600	SNOW COLLEGE/2200		
E-170 ENG6 TORCH FIRE AND SECURITY	08/14	AUSTIN EMERY	3	SNOW COLLEGE/0600	SNOW COLLEGE/2200		
E-172 ENG6 NVNNS B5261	08/14	CODY JENKINS	4	SNOW COLLEGE/0600	SNOW COLLEGE/2200		
E-6098 WTS2 ALPINE TRANSPORT INC	08/03	PETE LERAS	1	SNOW COLLEGE/0600	SNOW COLLEGE/2200		
E-6148 WTT2 FARR WEST FIRE	08/04	ISRAEL JUSTICE	2	SNOW COLLEGE/0600	SNOW COLLEGE/2200		
E-81 DZR2 ROCKY MNT FIRE	08/12	BRYAN HODSHIRE	2	SNOW COLLEGE/0600	SNOW COLLEGE/2200		
E-6093 DZR2 EMERY FARM INC	08/03	BURT ALLEN	2	SNOW COLLEGE/0600	SNOW COLLEGE/2200		
E-111 MBM2 B AND J FIREFIGHTING, LLC	08/13	BERNY MARQUEZ	2	SNOW COLLEGE/0600	SNOW COLLEGE/2200		
8. Division/Group Communication Summary							
Function	Channel	RX Frequency N/W	RX Tone/NAC	TX Frequency N/W	TX Tone/NAC	Mode	
TACTICAL	5	166.7750	146.2	166.7750	146.2	A	
COMMAND	8	170.6875	146.2	166.5750	146.2	A	
COMMAND	12	172.2500		165.0125	167.9	A	
AIR TO GROUND	13	170.5000		170.5000		A	
AIR TO GROUND	14	166.3250	146.2	166.3250	146.2	A	
9. Prepared By (Resource Unit Leader)		Approved By (Planning Section Chief)			Date	Time	
CONNIE WOODCOCK		MIKE KLASSEN			08/01/2025	2000	

Division/Group Assignment List (ICS 204 WF)

Controlled Unclassified Information//Basic

1. Incident Name:				3.			
MONROE CANYON				Branch: II		Division/Group: E	
2. Operational Period: DAY/NIGHT							
Date/Time From: 08/02/2025 0600 SAT		Date/Time To: 08/03/2025 0600 SUN					
4. Operations Personnel							
FIELD OPERATIONS CHIEF		ERIC NOLAN DONOVAN WALKER (T)		BRANCH DIRECTOR		CORY CARLSON	
DIVISION/GROUP SUPERVISOR		JOHN PERHACS; DEREK DOMIS (T)					
5. Resources Assigned this Period							
Strike Team / Task Force / Resource Designator		LWD	Leader	Number Persons	Drop Off PT./Time	Pick Up PT./Time	
O-88 HEQB		08/12	FRANK MCGUIRE	1	SNOW COLLEGE/0600	SNOW COLLEGE/2200	
O-5138 FMOD BROTHERS FIRE		08/05	MIKE WORLEY	2	SNOW COLLEGE/0600	SNOW COLLEGE/2200	
O-147 EMPF		08/14	KENNETH TROUBLEFIELD	1	SNOW COLLEGE/0600	SNOW COLLEGE/2200	
O-5120 EMPF		08/03	RICHARD DOBSON	1	SNOW COLLEGE/0600	SNOW COLLEGE/2200	
O-5193 EMPF		08/12	REBECCA WALLACE	1	SNOW COLLEGE/0600	SNOW COLLEGE/2200	
O-90 SOFC		08/12	JEFFERY HAMMES	1	SNOW COLLEGE/0600	SNOW COLLEGE/2200	
6. Control Operations/Work Assignments:							
<p>TASK: Continue to protect structures in Long Flat and improve indirect control lines on Cove Mountain and Saul's Meadow. Utilize firing operations on the toe of the slope to build and increase control lines; utilize UAS to get depth when able.</p> <p>PURPOSE: To protect private structures and property, preserve functionality of critical infrastructure and roadways, and minimize fire footprint.</p> <p>END STATE: Private property has little to no fire impact. Fire impact to lands kept as minimal as possible based on conditions and resources available.</p>							
7. Special Instructions:							
<ul style="list-style-type: none"> For planned dozer line operations, get proposed locations uploaded in Field Maps 24-48 hours ahead of time. Defensive and direct suppression operations is approved on all federal lands; notify READs of implementation. Archaeologist - Emily Swett - 435-531-7186, Roy Plank - 307-620-9950, Kandi Ruton - 435-253-4088. READ(T) - McCall Davis, 435-310-0123 Use caution when working in WUI areas and around powerlines. See Wildland Urban Interface (WUI) Firefighting on p. 11, and Powerline Safety on p. 22 of the IRPG. REMS 2 is a resource for all of Branch II. 							
8. Division/Group Communication Summary							
Function	Channel	RX Frequency N/W	RX Tone/NAC	TX Frequency N/W	TX Tone/NAC	Mode	
TACTICAL	5	166.7750	146.2	166.7750	146.2	A	
COMMAND	8	170.6875	146.2	166.5750	146.2	A	
COMMAND	12	172.2500		165.0125	167.9	A	
AIR TO GROUND	13	170.5000		170.5000		A	
AIR TO GROUND	14	166.3250	146.2	166.3250	146.2	A	
9. Prepared By (Resource Unit Leader)			Approved By (Planning Section Chief)			Date	Time
CONNIE WOODCOCK			MIKE KLASSEN			08/01/2025	2000

Division/Group Assignment List (ICS 204 WF)

Controlled Unclassified Information//Basic

1. Incident Name:				3.			
MONROE CANYON				II		G	
2. Operational Period: DAY/NIGHT							
Date/Time From: 08/02/2025 0600 SAT		Date/Time To: 08/03/2025 0600 SUN					
4. Operations Personnel							
FIELD OPERATIONS CHIEF		ERIC NOLAN DONOVAN WALKER (T)		BRANCH DIRECTOR		CORY CARLSON	
DIVISION/GROUP SUPERVISOR		RANDY DICKINSON JOSHUA MCCURLEY (T)					
5. Resources Assigned this Period							
Strike Team / Task Force / Resource Designator	LWD	Leader	Number Persons	Drop Off PT./Time	Pick Up PT./Time		
C-7029 CRW1 REDDING IHC	08/04	DAN MALLIA	25	SNOW COLLEGE/0600	SNOW COLLEGE/2200		
C-7034 CRW1 LONE PEAK IHC	08/02	CHRISTIAN BERNINGER	22	ICP/0600	ICP/2200		
C-7038 CRW1 BLACK MOUNTAIN IHC	08/09	MATT GILL; TONY YOCUM	25	SNOW COLLEGE/0600	SNOW COLLEGE/2200		
C-7033 CR2I SOLDIER CREEK	08/04	DAYTON CLEVELAND	20	SNOW COLLEGE/0600	SNOW COLLEGE/2200		
C-7036 CR2I IRON MOUNTAIN	08/05	CHRIS DOUGLAS (T); MO ESQUIBEL	20	SNOW COLLEGE/0600	SNOW COLLEGE/2200		
C-39 CRW2 AFS FORESTRY, LLC	08/14	ISRAEL MARTINEZ	20	SNOW COLLEGE/0600	SNOW COLLEGE/2200		
C-7012 CRW2 G AND C FORESTRY	08/07	JHOAN DELGADO; OLMAR VERA	20	SNOW COLLEGE/0600	SNOW COLLEGE/2200		
E-61 ENG3 UT-ASF 331	08/08	MATTHEW PETTY	5	SNOW COLLEGE/0600	SNOW COLLEGE/2200		
E-6150 ENG4 TFD	08/05	BROGAN ALEXANDER	4	SNOW COLLEGE/0600	SNOW COLLEGE/2200		
E-122 ENG6 TETON RESOURCE MANAGEMENT	08/13	GIL WILLIAMS	4	SNOW COLLEGE/0600	SNOW COLLEGE/2200		
E-164 ENG6 SCHOLL FIRE & FUELS MANAGEMENT	08/14	CORBIN STORRS	3	SNOW COLLEGE/0600	SNOW COLLEGE/2200		
* E-6088 ENG6 ARCHER MOUNTAIN	08/07	CALEB TORQUATO	3	SNOW COLLEGE/0600	SNOW COLLEGE/2200		
E-6105 WTT1 TACTICAL TENDER 10	08/03	JOHN ABERASTURI	2	SNOW COLLEGE/0600	SNOW COLLEGE/2200		
E-36 WTS2 BLACK OPERATIONS TENDER	08/04	JAKOBEE OSBORN	1	SNOW COLLEGE/0600	SNOW COLLEGE/2200		
E-148 DZR2 ALLENS WATER TENDER SERVICE INC	08/15	DAVE SHAW	2	SNOW COLLEGE/0600	SNOW COLLEGE/2200		
E-173 DZR2 BATTLE BORN EQUIPMENT 124457	08/06	ISAAC MEHRING	2	SNOW COLLEGE/0600	SNOW COLLEGE/2200		
O-100 TFLD	08/13	MICHAEL HOON	1	SNOW COLLEGE/0600	SNOW COLLEGE/2200		
O-5077 SOFC	08/04	THOM COLETTI	1	SNOW COLLEGE/0600	SNOW COLLEGE/2200		
O-5066 REMS 2 NIM	08/16	KENNY GARNER	4	SNOW COLLEGE/0600	SNOW COLLEGE/2200		
O-5194 EMPF	08/12	ETHAN BIEDERMAN	1	SNOW COLLEGE/0600	SNOW COLLEGE/2200		
8. Division/Group Communication Summary							
Function	Channel	RX Frequency N/W	RX Tone/NAC	TX Frequency N/W	TX Tone/NAC	Mode	
TACTICAL	1	168.0500	146.2	168.0500	146.2	A	
COMMAND	10	173.0375	146.2	167.3250	146.2	A	
AIR TO GROUND	13	170.5000		170.5000		A	
AIR TO GROUND	14	166.3250	146.2	166.3250	146.2	A	
9. Prepared By (Resource Unit Leader)		Approved By (Planning Section Chief)			Date		Time
LELA BRAUNSCH		MIKE KLASSEN			08/01/2025		2000

Division/Group Assignment List (ICS 204 WF)

Controlled Unclassified Information//Basic

1. Incident Name:				3.		
MONROE CANYON				Branch: II	Division/Group: G	
2. Operational Period: DAY/NIGHT						
Date/Time From: 08/02/2025 0600 SAT		Date/Time To: 08/03/2025 0600 SUN				
4. Operations Personnel						
FIELD OPERATIONS CHIEF		ERIC NOLAN DONOVAN WALKER (T)		BRANCH DIRECTOR		CORY CARLSON
DIVISION/GROUP SUPERVISOR		RANDY DICKINSON JOSHUA MCCURLEY (T)				
5. Resources Assigned this Period						
Strike Team / Task Force / Resource Designator	LWD	Leader	Number Persons	Drop Off PT./Time	Pick Up PT./Time	
E-6155 AMB3	08/07	NICK KNIGHT	2	SNOW COLLEGE/0600	SNOW COLLEGE/2200	
E-6106 VUTV OUTBACK FIREFIGHTING				SNOW COLLEGE/0600	SNOW COLLEGE/2200	
E-6112 VUTV CM BACKCOUNTRY RENTALS				SNOW COLLEGE/0600	SNOW COLLEGE/2200	
E-6114 VUTV OUTBACK FIREFIGHTING				SNOW COLLEGE/0600	SNOW COLLEGE/2200	
6. Control Operations/Work Assignments:						
<p>TASK: Contain spots and hold line from previous shift burn operations.</p> <p>PURPOSE: Protect private structures and property, preserve functionality of critical infrastructure and roadways, and minimize fire impact to recreation areas and natural resources.</p> <p>END STATE: Private property has little to no fire impact. Area closures can be lifted and recreation areas left with minimal damage. Fire impact to land kept as minimal as possible based on conditions and resources available.</p>						
7. Special Instructions:						
<ul style="list-style-type: none"> * IA Resources. For planned dozer line operations, get proposed locations uploaded in Field Maps 24-48 hours ahead of time. Defensive and direct suppression operations are approved on all federal lands; notify READs of implementation. Archaeologist - Emily Swett - 435-531-7186, Roy Plank - 307-620-9950, Kandi Ruton - 435-253-4088. READ(T) - Hunter Norris - 435-253-2587, Mark Dean, 435-253-0978. Use caution when working in WUI areas and around powerlines. See Wildland Urban Interface (WUI) Firefighting on p. 11, and Powerline Safety on p. 22 of the IRPG. REMS 2 is a resource for all of Branch II. 						
8. Division/Group Communication Summary						
Function	Channel	RX Frequency N/W	RX Tone/NAC	TX Frequency N/W	TX Tone/NAC	Mode
TACTICAL	1	168.0500	146.2	168.0500	146.2	A
COMMAND	10	173.0375	146.2	167.3250	146.2	A
AIR TO GROUND	13	170.5000		170.5000		A
AIR TO GROUND	14	166.3250	146.2	166.3250	146.2	A
9. Prepared By (Resource Unit Leader)		Approved By (Planning Section Chief)		Date	Time	
LELA BRAUNSCH		MIKE KLASSEN		08/01/2025	2000	

Division/Group Assignment List (ICS 204 WF)

Controlled Unclassified Information//Basic

1. Incident Name:				3.			
MONROE CANYON				II		K	
2. Operational Period: DAY/NIGHT							
Date/Time From: 08/02/2025 0600 SAT		Date/Time To: 08/03/2025 0600 SUN					
4. Operations Personnel							
FIELD OPERATIONS CHIEF		ERIC NOLAN DONOVAN WALKER (T)		BRANCH DIRECTOR		CORY CARLSON	
DIVISION/GROUP SUPERVISOR		TJ GHOLSON					
5. Resources Assigned this Period							
Strike Team / Task Force / Resource Designator		LWD	Leader	Number Persons	Drop Off PT./Time	Pick Up PT./Time	
C-30 CRW1 ARROWHEAD IHC		08/13	JORDAN FLORES	22	ICP/0600	ICP/2200	
C-28 CRW1 INYO IHC		08/14	J. SCHILLING; T. KIM	22	ICP/0600	ICP/2200	
C-37 CRW2 ALTA PACIFIC FIRE FIGHTING		08/14	ALAN ESPINOZA	20	ICP/0600	ICP/2200	
C-7024 CRW2 FUEGO FIRE AND FORESTRY		08/07	JOSE IBARRA	20	ICP/0600	ICP/2200	
E-6103 HETF UPPER VALLEY CONTRACTING		08/03	JAMES KRUCKEBERG	7	ICP/0600	ICP/2200	
E-120 ENG3 NDF B5232		08/13	CAMERON CHRISTENSEN	4	ICP/0600	ICP/2200	
E-159 ENG3 DRAPER FD		08/13	NICK KROPIS	4	ICP/0600	ICP/2200	
E-118 ENG4 NVEKD E1448		08/13	MADISON RAE HARRIS	4	ICP/0600	ICP/2200	
E-125 ENG6 UTAH DNR E633		08/13	TREVOR WHITING	2	ICP/0600	ICP/2200	
E-126 ENG6 OREM FD E632		08/12	BLAKE D JOLLEY	3	ICP/0600	ICP/2200	
E-6164 DZR1 DZR1 - UTCPD D4815		08/09	ZACH KUNZ	2	ICP/0600	ICP/2200	
E-82 DZR2 BENLIN WILDLAND LLC		08/12	CHARLIE ARNOLD	2	ICP/0600	ICP/2200	
E-6163 DZR2 UTCLD #K01161		08/09	TRAVIS BURR	2	ICP/0600	ICP/2200	
E-6169 EXC2 RANGE WATER SOLUTIONS		08/12	TYKUS HEATON	2	ICP/0600	ICP/2200	
E-6149 WTT2 TREASURE VALLEY FIRE		08/06	SCOTT RASMUSSEN	2	ICP/0600	ICP/2200	
O-102 TFLD		08/14	AARON PEDERSEN	1	ICP/0600	ICP/2200	
O-5086 HEQB		08/02	NICHOLAS BEHREND	1	ICP/0600	ICP/2200	
O-5142 EMPF		08/06	ADAM CASE	1	ICP/0600	ICP/2200	
O-124.1 EMPF		08/13	BARRY OXLEY	1	ICP/0600	ICP/2200	
8. Division/Group Communication Summary							
Function	Channel	RX Frequency N/W	RX Tone/NAC	TX Frequency N/W	TX Tone/NAC	Mode	
TACTICAL	4	166.7250	146.2	166.7250	146.2	A	
COMMAND	9	169.5375	146.2	164.7125	146.2	A	
COMMAND	10	173.0375	146.2	167.3250	146.2	A	
AIR TO GROUND	13	170.5000		170.5000		A	
AIR TO GROUND	14	166.3250	146.2	166.3250	146.2	A	
9. Prepared By (Resource Unit Leader)		Approved By (Planning Section Chief)			Date	Time	
ZOË SUMRALL		MIKE KLASSEN			08/01/2025	2000	

Division/Group Assignment List (ICS 204 WF)

Controlled Unclassified Information//Basic

1. Incident Name:				3.			
MONROE CANYON				Branch: II		Division/Group: K	
2. Operational Period: DAY/NIGHT							
Date/Time From: 08/02/2025 0600 SAT		Date/Time To: 08/03/2025 0600 SUN					
4. Operations Personnel							
FIELD OPERATIONS CHIEF		ERIC NOLAN DONOVAN WALKER (T)		BRANCH DIRECTOR		CORY CARLSON	
DIVISION/GROUP SUPERVISOR		TJ GHOLSON					
5. Resources Assigned this Period							
Strike Team / Task Force / Resource Designator		LWD	Leader	Number Persons	Drop Off PT./Time	Pick Up PT./Time	
O-5154 SOFC		08/11	DAVID HADE	1	ICP/0600	ICP/2200	
6. Control Operations/Work Assignments:							
<p>TASK: Continue to protect structures in Burrville while scouting for direct control opportunities.</p> <p>PURPOSE: To protect private structures and property, preserve functionality of critical infrastructure and roadways, and minimize the fire footprint.</p> <p>END STATE: Private property has little to no fire impact. Fire impact to lands is kept as minimal as possible based on conditions and resources available.</p>							
7. Special Instructions:							
<ul style="list-style-type: none"> For planned dozer line operations, get proposed locations uploaded in Field Maps 24-48 hours ahead of time. Defensive and direct suppression operations are approved on all federal lands; notify READs of implementation. Archaeologist - Emily Swett - 435-531-7186, Roy Plank - 307-620-9950, Kandi Ruton - 435-253-4088. READ(T) - Hunter Norris - 435-253-2587, Mark Dean, 435-253-0978. Ensure positive communication with adjacent resources, especially during burnout operations. Use caution when working in WUI areas, around powerlines, with heavy equipment and chippers. Review a Risk Assessment or similar prior to chipping operations. Refer to the Monroe Fire Water Tenders and Engines Aquatic Invasive Water protocol if drafting from the Manning or Box Watersheds. AMBO4 will respond from ICP 							
8. Division/Group Communication Summary							
Function	Channel	RX Frequency N/W	RX Tone/NAC	TX Frequency N/W	TX Tone/NAC	Mode	
TACTICAL	4	166.7250	146.2	166.7250	146.2	A	
COMMAND	9	169.5375	146.2	164.7125	146.2	A	
COMMAND	10	173.0375	146.2	167.3250	146.2	A	
AIR TO GROUND	13	170.5000		170.5000		A	
AIR TO GROUND	14	166.3250	146.2	166.3250	146.2	A	
9. Prepared By (Resource Unit Leader)			Approved By (Planning Section Chief)		Date	Time	
ZOË SUMRALL			MIKE KLASSEN		08/01/2025	2000	

Division/Group Assignment List (ICS 204 WF)

Controlled Unclassified Information//Basic

1. Incident Name:				3.			
MONROE CANYON				III		M	
2. Operational Period: DAY/NIGHT							
Date/Time From: 08/02/2025 0600 SAT		Date/Time To: 08/03/2025 0600 SUN					
4. Operations Personnel							
FIELD OPERATIONS CHIEF		ERIC NOLAN DONOVAN WALKER (T)		BRANCH DIRECTOR		JEFF SURBER	
DIVISION/GROUP SUPERVISOR		JAKE CLASS; MATT FOGARTY (T)					
5. Resources Assigned this Period							
Strike Team / Task Force / Resource Designator		LWD	Leader	Number Persons	Drop Off PT./Time	Pick Up PT./Time	
C-43 CRW1 KINGS RIVER HOTSHOTS IHC		08/15	KELLY HAINES	21	ICP/0600	ICP/2200	
C-7027 CRW1 ALTA IHC		08/03	TYLER CARRUTH; RYAN DAHL (T)	23	BOX CREEK SPIKE CAMP/0600	BOX CREEK SPIKE CAMP/2200	
C-7028 CRW1 RUBY MOUNTAIN IHC		08/03	TYLER MOLLENBERG	20	BOX CREEK SPIKE CAMP/0600	BOX CREEK SPIKE CAMP/2200	
C-38 CRW2 AFS FORESTRY, LLC		08/14	JUAN RAMOS	20	ICP/0600	ICP/2200	
* E-62 ENG4 ID-TFD 2416		08/09	COLTON BATES	4	BOX CREEK SPIKE CAMP/0600	BOX CREEK SPIKE CAMP/2200	
E-70 ENG4 SUNDANCE 10		08/10	PHILIP LONG	3	BOX CREEK SPIKE CAMP/0600	BOX CREEK SPIKE CAMP/2200	
E-6159 ENG4 DNR UT 491		08/07	TYRUS OKINISHI	5	BOX CREEK SPIKE CAMP/0600	BOX CREEK SPIKE CAMP/2200	
E-66 ENG6 BUSCHER ENGINES, INC		08/10	TERRANCE HODGKISS	3	BOX CREEK SPIKE/0600	BOX CREEK SPIKE/2200	
E-155 WTS2 WEBER FD WT265		08/14	DAN MILLER	1	BOX CREEK SPIKE CAMP/0600	BOX CREEK PIKE CAMP/2200	
E-6065 WTS2 COWBOY CONTRACTING 104		08/03	SHAWN TWITCHELL	1	BOX CREEK SPIKE CAMP/0600	BOX CREEK SPIKE CAMP/2200	
E-14 DZR2 SUMMIT CONTRACTING		08/03	TOM PITMAN	2	BOX CREEK SPIKE/0600	BOX CREEK SPIKE/2200	
E-115 CHP2 COLOR COUNTRY TREE SERVICE		08/13	ADAM EDWARDS	3	BOX CREEK SPIKE CAMP/0600	BOX CREEK SPIKE CAMP/2200	
O-76 TFLD		08/11	WILL DALBY (T)	1	BOX CREEK SPIKE/0600	BOX CREEK SPIKE/2200	
O-5202 TFLD		08/11	RICHARD LYONS	1	BOX CREEK SPIKE/0600	BOC CREEK SPIKE/2200	
O-89 HEQB		08/12	SCOTT THOMPSON	1	BOX CREEK SPIKE CAMP/0600	BOX CREEK SPIKE CAMP/2200	
O-5084 HEQB		08/02	CHARLES SANDFORD	1	BOX CREEK SPIKE CAMP/0600	BOX CREEK SPIKE CAMP/2200	
O-48 FOBS		08/03	BRIAN PIPPIN	1	BOX CREEK SPIKE CAMP/0800	BOX CREEK SPIKE CAMP/2200	
8. Division/Group Communication Summary							
Function	Channel	RX Frequency N/W	RX Tone/NAC	TX Frequency N/W	TX Tone/NAC	Mode	
TACTICAL	3	168.6000	146.2	168.6000	146.2	A	
COMMAND	7	169.7500	146.2	167.1000	146.2	A	
COMMAND	10	173.0375	146.2	167.3250	146.2	A	
AIR TO GROUND	13	170.5000		170.5000		A	
AIR TO GROUND	14	166.3250	146.2	166.3250	146.2	A	
9. Prepared By (Resource Unit Leader)			Approved By (Planning Section Chief)			Date	
ZOE SUMRALL			MIKE KLASSEN			08/01/2025	
						2000	

Division/Group Assignment List (ICS 204 WF)

Controlled Unclassified Information//Basic

1. Incident Name:				3.			
MONROE CANYON				III		M	
2. Operational Period: DAY/NIGHT							
Date/Time From: 08/02/2025 0600 SAT		Date/Time To: 08/03/2025 0600 SUN					
4. Operations Personnel							
FIELD OPERATIONS CHIEF		ERIC NOLAN DONOVAN WALKER (T)		BRANCH DIRECTOR		JEFF SURBER	
DIVISION/GROUP SUPERVISOR		JAKE CLASS; MATT FOGARTY (T)					
5. Resources Assigned this Period							
Strike Team / Task Force / Resource Designator		LWD	Leader	Number Persons	Drop Off PT./Time	Pick Up PT./Time	
O-123 EMPF KEYSTONE MEDICAL STAFFING		08/13	JEFFREY DIMAURO	1	BOX CREEK SPIKE CAMP/0600	BOX CREEK SPIKE CAMP/2200	
O-5141 EMPF		08/06	TONY POPE	1	BOX CREEK SPIKE CAMP/0600	BOX CREEK SPIKE CAMP/2200	
E-6076 AMB2		08/07	ARTHUR YANEZ	2	BOX CREEK SPIKE CAMP/0600	BOX CREEK SPIKE CAMP/2200	
O-5170 SOFC		08/10	TROY FLOYD	1	BOX CREEK SPIKE CAMP/0600	BOX CREEK SPIKE CAMP/2200	
E-6113 VUTV BACKCOUNTRY RENTALS					BOX CREEK SPIKE CAMP/0600	BOX CREEK SPIKE CAMP/2200	
E-6115 VUTV BACKCOUNTRY RENTALS			DOWN FOR MAINTENANCE		BOX CREEK SPIKE CAMP/0600	BOX CREEK SPIKE CAMP/2200	
6. Control Operations/Work Assignments:							
<p>TASK: Where safe, defend structures as fire continues to progress. Prep Koosharem Road and seek opportunities for indirect lines to valley floor. Suppress spot fires where necessary to increase indirect implementation timelines.</p> <p>PURPOSE: Provide suppression lines to work from in the event fire threatens to impact the area. Eliminate fuels between control lines and the fire to reduce risk of extreme fire behavior. Improve access/egress.</p> <p>END STATE: Fire growth into and onto private property is eliminated or minimized. Roadways and infrastructure are left undamaged. Closures lifted and fire impacts to public land and recreational areas minimized.</p>							
7. Special Instructions:							
<ul style="list-style-type: none"> * IA Resources. For planned dozer line operations, get proposed locations uploaded in Field Maps 24-48 hours ahead of time. Defensive and direct suppression operations are approved on all federal lands; notify READs of implementation. <p>Archaeologist - Emily Swett - 435-531-7186, Roy Plank 307-620-9950, Kandi Ruton - 435-253-4088. READ(T) - Hunter Norris - 435-253-2587, Mark Dean, 435-253-0978. UAS module may be operating in Division M. Ensure positive communication with adjacent resources, especially during burnout operations.</p> <ul style="list-style-type: none"> Use caution when working in WUI areas and around powerlines. See Wildland Urban Interface (WUI) Firefighting on p. 11, and Powerline Safety on p. 22 of the IRPG. AMB2 and EMPF Emrich are resources for all of Branch III. 							
8. Division/Group Communication Summary							
Function	Channel	RX Frequency N/W	RX Tone/NAC	TX Frequency N/W	TX Tone/NAC	Mode	
TACTICAL	3	168.6000	146.2	168.6000	146.2	A	
COMMAND	7	169.7500	146.2	167.1000	146.2	A	
COMMAND	10	173.0375	146.2	167.3250	146.2	A	
AIR TO GROUND	13	170.5000		170.5000		A	
AIR TO GROUND	14	166.3250	146.2	166.3250	146.2	A	
9. Prepared By (Resource Unit Leader)			Approved By (Planning Section Chief)			Date	Time
ZOE SUMRALL			MIKE KLASSEN			08/01/2025	2000

Division/Group Assignment List (ICS 204 WF)

Controlled Unclassified Information//Basic

1. Incident Name:				3.			
MONROE CANYON				III		W	
2. Operational Period: DAY/NIGHT							
Date/Time From: 08/02/2025 0600 SAT		Date/Time To: 08/03/2025 0600 SUN					
4. Operations Personnel							
FIELD OPERATIONS CHIEF		ERIC NOLAN DONOVAN WALKER (T)		BRANCH DIRECTOR		JEFF SURBER	
DIVISION/GROUP SUPERVISOR		TRUETT ANDERSON WILL CREEDEN (T)					
5. Resources Assigned this Period							
Strike Team / Task Force / Resource Designator		LWD	Leader	Number Persons	Drop Off PT./Time	Pick Up PT./Time	
C-17 CR2I ENA CREW 1		08/12	KARL STEPHENSON	25	ICP/0600	ICP/2200	
C-21 CRW2 TORRES CONTRACTING, INC.		08/13	ANGEL CORTES	20	ICP/0600	ICP/2200	
C-7031 CR2I FISHLAKE REGS		08/03	GAGE BELL (T)	24	ICP/0600	ICP/2200	
C-7025 CRW2 CABRERA CONTRACTING 1		08/07	BENNY CABRERA	20	ICP/0600	ICP/2200	
C-7041 CRW2 FRANCO REFORESTATION		08/08	JOSE ABURTO	20	ICP/0600	ICP/2200	
E-74 ENG4 GREAT BASIN #69		08/10	DAVID GRASS	3	BOX CREEK SPIKE CAMP/0600	BOX CREEK SPIKE CAMP/2200	
E-68 ENG6 BLUFFDALE FD E694		08/10	DAMON ANDERSON	3	BOX CREEK SPIKE CAMP/0600	BOX CREEK SPIKE CAMP/2200	
* E-6072 ENG6 ROCKY POINT WILDFIRE		08/08	PHIL HOAG	3	BOX CREEK SPIKE CAMP/0600	BOX CREEK SPIKE CAMP/2200	
E-6082 ENG6 ROCKY POINT WILDFIRE		08/07	CODY LENZ	3	BOX CREEK SPIKE CAMP/0600	BOX CREEK SPIKE CAMP/2200	
E-6131 CHP2 TORCH FIRE AND SECURITY		08/03	ARIEL POWELL	3	BOX CREEK SPIKE CAMP/0600	BOX CREEK SPIKE CAMP/2200	
E-6132 CHP2 FLYING V TREE INC		08/04	AYRIK FISHER	3	BOX CREEK SPIKE CAMP/0600	BOX CREEK SPIKE CAMP/2200	
E-6146 CHP2 J & S CONTRACTING		08/06	MONICA TOPTE	3	ICP/0600	ICP/2200	
E-6061 WTT2 INKOM FIRE		08/07	ROBERT BEVAN	2	BOX CREEK SPIKE CAMP/0600	BOX CREEK SPIKE CAMP/2200	
E-6089 WTS2 HEATSEEKER		08/04	KEN FOURTNER	1	BOX CREEK SPIKE CAMP/0600	BOX CREEK SPIKE CAMP/2200	
E-6097 WTS2 COLOR COUNTRY		08/04	TOMMY NEWSOME	1	BOX CREEK SPIKE CAMP/0600	BOX CREEK SPIKE CAMP/2200	
O-5059 FMOD SOUTHWEST SAWYERS		08/07	MAX RYDER	2	BOX CREEK SPIKE CAMP/0600	BOX CREEK SPIKE CAMP/2200	
O-5139 FMOD ARTEMIS NW		08/05	JEFF GANDEE	2	BOX CREEK SPIKE CAMP/0600	BOX CREEK SPIKE CAMP/2200	
O-5101 TFLD		08/02	JOHN SANDERS	1	BOX CREEK SPIKE CAMP/0600	BOX CREEK SPIKE CAMP/2200	
8. Division/Group Communication Summary							
Function	Channel	RX Frequency N/W	RX Tone/NAC	TX Frequency N/W	TX Tone/NAC	Mode	
TACTICAL	6	168.2500	146.2	168.2500	146.2	A	
COMMAND	7	169.7500	146.2	167.1000	146.2	A	
COMMAND	9	169.5375	146.2	164.7125	146.2	A	
AIR TO GROUND	13	170.5000		170.5000		A	
AIR TO GROUND	14	166.3250	146.2	166.3250	146.2	A	
9. Prepared By (Resource Unit Leader)			Approved By (Planning Section Chief)			Date	
LELA BRAUNSCH			MIKE KLASSEN			08/01/2025	
						2000	

Division/Group Assignment List (ICS 204 WF)

Controlled Unclassified Information//Basic

1. Incident Name:				3.			
MONROE CANYON				Branch:		Division/Group:	
2. Operational Period: DAY/NIGHT				III		W	
Date/Time From: 08/02/2025 0600 SAT		Date/Time To: 08/03/2025 0600 SUN					
4. Operations Personnel							
FIELD OPERATIONS CHIEF		ERIC NOLAN DONOVAN WALKER (T)		BRANCH DIRECTOR		JEFF SURBER	
DIVISION/GROUP SUPERVISOR		TRUETT ANDERSON WILL CREEDEN (T)					
5. Resources Assigned this Period							
Strike Team / Task Force / Resource Designator		LWD	Leader	Number Persons	Drop Off PT./Time	Pick Up PT./Time	
O-5133 SOFC		08/11	BRYAN CHRISTENSEN	1	BOX CREEK SPIKE CAMP/0600	BOX CREEK SPIKE CAMP/2200	
O-5023 REMS 1 NIM		08/13	THOMAS TOLMAN	4	BOX CREEK SPIKE CAMP/0600	BOX CREEK SPIKE CAMP/2200	
O-5119 EMPF		08/03	JOHN PORTZ	1	BOX CREEK SPIKE CAMP/0600	BOX CREEK SPIKE CAMP/2200	
E-6109 VUTV OUTBACK FIREFIGHTING					BOX CREEK SPIKE CAMP/0600	BOX CREEK SPIKE CAMP/2200	
6. Control Operations/Work Assignments:							
<p>TASK: Secure perimeter from DP 30 to DP 35 to 4103 trail. Continue mop up where appropriate commensurate with values at risk. Locate, assess, and suppress spot fires.</p> <p>PURPOSE: Protect roads, critical infrastructure, and private property from negative impacts of the fire. Minimize fire impacted areas on public lands to reasonable fire footprint based on conditions and available resources.</p> <p>END STATE: End up with minimal impact to private property and land infrastructure that is functional and intact. Area closures lifted and fire impacts to land slowed considerably or stopped.</p>							
7. Special Instructions:							
<ul style="list-style-type: none"> * IA Resources. For planned dozer line operations, get proposed locations uploaded in Field Maps 24-48 hours ahead of time. Defensive and direct suppression operations are approved on all federal lands; notify READs of implementation. <p>Archaeologist - Emily Swett - 435-531-7186, Roy Plank 307-620-9950, Kandi Ruton - 435-253-4088. READ(T) - Hunter Norris - 435-253-2587, Mark Dean, 435-253-0978.</p> <ul style="list-style-type: none"> Ensure positive communication with adjacent resources, especially during burnout operations. Use caution when working in WUI areas, around powerlines, with heavy equipment and chippers. Review a Risk Assessment or similar prior to chipping operations. AMB2 and EMPF Emrich are resources for all of Branch III. Refer to the Monroe Fire Water Tenders and Engines Aquatic Invasive Water protocol if drafting from the Manning or Box Watersheds. 							
8. Division/Group Communication Summary							
Function	Channel	RX Frequency N/W	RX Tone/NAC	TX Frequency N/W	TX Tone/NAC	Mode	
TACTICAL	6	168.2500	146.2	168.2500	146.2	A	
COMMAND	7	169.7500	146.2	167.1000	146.2	A	
COMMAND	9	169.5375	146.2	164.7125	146.2	A	
AIR TO GROUND	13	170.5000		170.5000		A	
AIR TO GROUND	14	166.3250	146.2	166.3250	146.2	A	
9. Prepared By (Resource Unit Leader)			Approved By (Planning Section Chief)			Date	Time
LELA BRAUNSCH			MIKE KLASSEN			08/01/2025	2000

Division/Group Assignment List (ICS 204 WF)

Controlled Unclassified Information//Basic

1. Incident Name:				3.			
MONROE CANYON				III		Z	
2. Operational Period: DAY/NIGHT							
Date/Time From: 08/02/2025 0600 SAT		Date/Time To: 08/03/2025 0600 SUN					
4. Operations Personnel							
FIELD OPERATIONS CHIEF		ERIC NOLAN DONOVAN WALKER (T)		BRANCH DIRECTOR		JEFF SURBER	
DIVISION/GROUP SUPERVISOR		SCOTT PACE ELLIOTT ARNOLD (T)					
5. Resources Assigned this Period							
Strike Team / Task Force / Resource Designator		LWD	Leader	Number Persons	Drop Off PT./Time	Pick Up PT./Time	
C-22 CRW2 CONTRACTING INC.		08/12	CHRIS ROCHA	20	ICP/0600	ICP/2200	
C-7037 CRW2 MOJAVE		08/04	ERIK NELSEN	21	ICP/0600	ICP/2200	
E-75 ENG4 SUNDANCE 09		08/10	DUSTIN GILLESPIE	3	BOX CREEK SPIKE CAMP/0600	BOX CREEK SPIKE CAMP/2200	
* E-163 ENG4 OUTBACK FIREFIGHTING 521508		08/14	MATTHEW DIERCK	3	BOX CREEK SPIKE CAMP/0600	BOX CREEK SPIKE CAMP/2200	
E-67 ENG6 WEBER FD E602		08/10	TJ REEDER	3	BOX CREEK SPIKE CAMP/0600	BOX CREEK SPIKE CAMP/2200	
E-73 ENG6 LEADORE E681		08/10	JEREMIAH BALLIETT	6	BOX CREEK SPIKE CAMP/0600	BOX CREEK SPIKE CAMP/2200	
E-6083 ENG6 MILLER TIMBER 5113		08/12	YASHIMA MAIDHER	3	BOX CREEK SPIKE CAMP/0600	BOX CREEK SPIKE CAMP/2200	
E-6085 ENG6 BLAZE 08		08/16	AARON CARLSON	3	BOX CREEK SPIKE CAMP/0600	BOX CREEK SPIKE CAMP/2200	
E-11 RED TRUCK WILDFIRE		08/05	HECTOR MARTINEZ	3	BOX CREEK SPIKE/0600	BOX CREEK SPIKE/2200	
E-6062 WTS2 COWBOY CONTRACTING 101		08/05	JORDAN MILDON	2	BOX CREEK SPIKE CAMP/0600	BOX CREEK SPIKE CAMP/2200	
O-5201 TFLD		08/11	DAN POOLE	1	BOX CREEK SPIKE CAMP/0600	BOX CREEK SPIKE CAMP/2200	
O-47 FOBS		08/03	WILLIAM MCGINLEY	1	BOX CREEK SPIKE CAMP/0600	BOX CREEK SPIKE CAMP/2200	
O-5190 SOF3		08/11	LANE OSTENSON	1	BOX CREEK SPIKE CAMP/0600	BOX CREEK SPIKE CAMP/2200	
O-148 EMPF		08/15	JOE DOIDGE	1	BOX CREEK SPIKE CAMP/0600	BOX CREEK SPIKE CAMP/2200	
O-5105 EMPF		08/03	MATT EMRICH	1	BOX CREEK SPIKE CAMP/0600	BOX CREEK SPIKE CAMP/2200	
8. Division/Group Communication Summary							
Function	Channel	RX Frequency N/W	RX Tone/NAC	TX Frequency N/W	TX Tone/NAC	Mode	
TACTICAL	5	166.7750	146.2	166.7750	146.2	A	
COMMAND	9	169.5375	146.2	164.7125	146.2	A	
AIR TO GROUND	13	170.5000		170.5000		A	
AIR TO GROUND	14	166.3250	146.2	166.3250	146.2	A	
9. Prepared By (Resource Unit Leader)			Approved By (Planning Section Chief)			Date	
ZOE SUMRALL			MIKE KLASSEN			08/01/2025	
						2000	

Division/Group Assignment List (ICS 204 WF)

Controlled Unclassified Information//Basic

1. Incident Name:				3.			
MONROE CANYON				III		Z	
2. Operational Period: DAY/NIGHT							
Date/Time From: 08/02/2025 0600 SAT		Date/Time To: 08/03/2025 0600 SUN					
4. Operations Personnel							
FIELD OPERATIONS CHIEF		ERIC NOLAN DONOVAN WALKER (T)		BRANCH DIRECTOR		JEFF SURBER	
DIVISION/GROUP SUPERVISOR		SCOTT PACE ELLIOTT ARNOLD (T)					
5. Resources Assigned this Period							
Strike Team / Task Force / Resource Designator		LWD	Leader	Number Persons	Drop Off PT./Time	Pick Up PT./Time	
6. Control Operations/Work Assignments:							
<p>TASK: Continue to increase depth of mop up along control lines and secure around structures in Monroe and Manning Meadows. Strengthen and secure the fires edge east of Monroe Meadows. Maintain chipping operations around structures in Manning Meadows. Continue construction and improvement of the contingency line from DP 62 to the South Branch break.</p> <p>PURPOSE: Limit any further damage to private property from fire impacts. Prevent any further fire growth where possible and reasonable based on conditions and available resources.</p> <p>END STATE: To have the currently active fire edge area extinguished. Eliminate further fire impact to property. Ensure that area closures are lifted so public can return.</p>							
7. Special Instructions:							
<ul style="list-style-type: none"> IA Resources For planned dozer line operations, get proposed locations uploaded in Field Maps 24-48 hours ahead of time. Defensive and direct suppression operations are approved on all federal lands; notify READs of implementation. Archaeologist - Emily Swett - 435-531-7186, Roy Plank - 307-620-9950, Kandi Ruton - 435-253-4088. READ(T) - Hunter Norris - 435-253-2587, Mark Dean, 435-253-0978. Use caution when working with chippers. Review the Risk Assessment or similar prior to chipping operations. Ensure positive communication with adjacent resources, especially during burnout operations. Use caution when working in WUI areas and around powerlines. See Wildland Urban Interface (WUI) Firefighting on p. 11, and Powerline Safety on p. 22 of the IRPG. AMB2 and EMPF Emrich are resources for all of Branch III. Refer to the Monroe Fire Water Tenders and Engines Aquatic Invasive Water protocol if drafting from the Manning or Box Watersheds. 							
8. Division/Group Communication Summary							
Function	Channel	RX Frequency N/W	RX Tone/NAC	TX Frequency N/W	TX Tone/NAC	Mode	
TACTICAL	5	166.7750	146.2	166.7750	146.2	A	
COMMAND	9	169.5375	146.2	164.7125	146.2	A	
AIR TO GROUND	13	170.5000		170.5000		A	
AIR TO GROUND	14	166.3250	146.2	166.3250	146.2	A	
9. Prepared By (Resource Unit Leader)			Approved By (Planning Section Chief)			Date	
ZOE SUMRALL			MIKE KLASSEN			08/01/2025	
						2000	

Controlled Unclassified Information//Basic

Page 1 of 2

Division/Group Assignment List (ICS 204 WF)

Controlled Unclassified Information//Basic

1. Incident Name:				3.			
MONROE CANYON				Branch: VII		Division/Group: BEAR VALLEY CONTINGENCY	
2. Operational Period: DAY/NIGHT							
Date/Time From: 08/02/2025 0600 SAT		Date/Time To: 08/03/2025 0600 SUN					
4. Operations Personnel							
FIELD OPERATIONS CHIEF		ERIC NOLAN DONOVAN WALKER (T)		BRANCH DIRECTOR		DAVE CROUSSER	
DIVISION/GROUP SUPERVISOR		JEFF BERGFELD; RANDY COZAD (T)					
5. Resources Assigned this Period							
Strike Team / Task Force / Resource Designator		LWD	Leader	Number Persons	Drop Off PT./Time	Pick Up PT./Time	
6. Control Operations/Work Assignments:							
<p>TASK: Work on implementing all contingency lines from Koosharem Canyon Road to Bell Rock. Scout lines west of Bell Rock for areas to tie in north of fire.</p> <p>PURPOSE: Provide options and intelligence to protect private property if fire should impact the area. Provide better potential contingency lines.</p> <p>END STATE: Minimal impact to private property. Road damage from fire traffic is repaired.</p>							
7. Special Instructions:							
<ul style="list-style-type: none"> * IA Resources. For planned dozer line operations, get proposed locations uploaded in Field Maps 24-48 hours ahead of time. Defensive and direct suppression operations are approved on all federal lands; notify READs of implementation. Archaeologist - Emily Swett, 435-531-7186, Roy Plank, 307-620-9950, Kandi Ruton, 435-253-4088. READ(T) - McCall Davis, 435-310-0123, Hunter Norris, 435-253-2587, Mark Dean, 435-253-0978. Use caution when working with Heavy Equipment. See Working with Heavy Equipment on p.87 of the IRPG. Use caution when working with chippers. Review the Risk Assessment prior to chipping operations. REMS 2 is a resource for all of Branch II. 							
8. Division/Group Communication Summary							
Function	Channel	RX Frequency N/W	RX Tone/NAC	TX Frequency N/W	TX Tone/NAC	Mode	
TACTICAL	6	168.2500	146.2	168.2500	146.2	A	
COMMAND	7	169.7500	146.2	167.1000	146.2	A	
COMMAND	9	169.5375	146.2	164.7125	146.2	A	
COMMAND	10	173.0375	146.2	167.3250	146.2	A	
AIR TO GROUND	13	170.5000		170.5000		A	
AIR TO GROUND	14	166.3250	146.2	166.3250	146.2	A	
9. Prepared By (Resource Unit Leader)			Approved By (Planning Section Chief)		Date	Time	
ZOE SUMRALL			MIKE KLASSEN		08/01/2025	2000	

Division/Group Assignment List (ICS 204 WF)

Controlled Unclassified Information//Basic

1. Incident Name:				3.			
MONROE CANYON				Branch: VII		Division/Group: STRUCTURE GROUP	
2. Operational Period: DAY/NIGHT							
Date/Time From: 08/02/2025 0600 SAT		Date/Time To: 08/03/2025 0600 SUN					
4. Operations Personnel							
FIELD OPERATIONS CHIEF		ERIC NOLAN DONOVAN WALKER (T)		BRANCH DIRECTOR		DAVE CROUSSER	
DIVISION/GROUP SUPERVISOR		STEVEN THIME PAUL MITCHELL (T)					
5. Resources Assigned this Period							
Strike Team / Task Force / Resource Designator		LWD	Leader	Number Persons	Drop Off PT./Time	Pick Up PT./Time	
E-121 ENG3 SMOKIN RIDGE		08/14	FRED DEFFER	3	ICP/0600	ICP/2200	
E-6075 ENG3 STAR FIRE BR51		08/13	CORY TROSKY	3	ICP/0600	ICP/2200	
E-6160 ENG3 WY-BTF 341		08/08	TITUS PERKINS	5	ICP/0600	ICP/2200	
E-159 ENG3 DRAPER FD		08/13	NICK KROPIS	4	ICP/0600	ICP/2200	
E-6071 ENG5 EVEREST FIRE AUTHORITY		08/06	STEVEN BOWSHER	3	ICP/0600	ICP/2200	
E-160 ENG6 CLEARWATER FIRE SUPPORT		08/14	MATTHEW SORES	3	ICP/0600	ICP/2200	
E-168 ENG6 GREAT BASIN FIRE B73980		08/14	RAY IRONCLOUD	3	ICP/0600	ICP/2200	
E-169 ENG6 DM FIRE SOLUTIONS, INC - 230080		08/14	SETH COLBRY	3	ICP/0600	ICP/2200	
E-6066 ENG6 NATIONAL WILDLAND FIRE E622		08/13	BRIAN ENNIS	3	ICP/0600	ICP/2200	
E-6081 ENG6 TRAILBLAZERS		08/08	RAY MOORE	3	ICP/0600	ICP/2200	
E-6086 ENG6 BLEDSOE FIRE		08/07	MATHEW BLEDSOE	3	ICP/0600	ICP/2200	
E-152 WTT2 PIERCE FIRE		08/15	FRANCESCO MOORE	2	ICP/0600	ICP/2200	
E-6060 WTT2 GREAT BASIN 1101		08/15	GENE HANCOCK	2	ICP/0600	ICP/2200	
E-156 WTS2 G3 DEVELOPMENT		08/13	CLINT BUCKNER	1	ICP/0600	ICP/2200	
E-157 WTS2 KKS WATER SERVICE		08/14	BRANDON CENTER	1	ICP/0600	ICP/2200	
E-6090 WTS2 NORTH BANNOCK FD		08/15	TYLER SHELTON	1	ICP/0600	ICP/2200	
E-180 WTS3 RESILIENT MADE LANDSCAPES 076472		08/14	BRYAN GAINES	2	ICP/0600	ICP/2200	
8. Division/Group Communication Summary							
Function	Channel	RX Frequency N/W	RX Tone/NAC	TX Frequency N/W	TX Tone/NAC	Mode	
TACTICAL	2	168.2000	146.2	168.2000	146.2	A	
COMMAND	7	169.7500	146.2	167.1000	146.2	A	
COMMAND	8	170.6875	146.2	166.5750	146.2	A	
COMMAND	9	169.5375	146.2	164.7125	146.2	A	
COMMAND	10	173.0375	146.2	167.3250	146.2	A	
AIR TO GROUND	13	170.5000		170.5000		A	
AIR TO GROUND	14	166.3250	146.2	166.3250	146.2	A	
9. Prepared By (Resource Unit Leader)			Approved By (Planning Section Chief)			Date	
CONNIE WOODCOCK			MIKE KLASSEN			08/01/2025	
						2000	

Division/Group Assignment List (ICS 204 WF)

Controlled Unclassified Information//Basic

1. Incident Name:				3.			
MONROE CANYON				Branch: VII		Division/Group: STRUCTURE GROUP	
2. Operational Period: DAY/NIGHT							
Date/Time From: 08/02/2025 0600 SAT		Date/Time To: 08/03/2025 0600 SUN					
4. Operations Personnel							
FIELD OPERATIONS CHIEF		ERIC NOLAN DONOVAN WALKER (T)		BRANCH DIRECTOR		DAVE CROUSSER	
DIVISION/GROUP SUPERVISOR		STEVEN THIME PAUL MITCHELL (T)					
5. Resources Assigned this Period							
Strike Team / Task Force / Resource Designator		LWD	Leader	Number Persons	Drop Off PT./Time	Pick Up PT./Time	
O-170 TFLD		08/15	MARK SACHARA	1	ICP/0600	ICP/2200	
O-5114 TFLD (T)		08/03	JORGE ALCARAZ-LOPEZ	1	ICP/0600	ICP/2200	
O-153 FOBS		08/15	RODOLFO URIBE	1	ICP/0600	ICP/2200	
0							
6. Control Operations/Work Assignments:							
<p>TASK: Be prepared to surge resources to protect and support all Divisions with engines and crews, as needed. Assess and prepare for structure defense near Burville and Monroe. Maintain water handling systems.</p> <p>PURPOSE: Protect property from further or future damage from fire. Limit fire growth. Provide needed support to other divisions with limited resources to ensure global success.</p> <p>END STATE: Fire impact and damage to private property is slowed considerably or stopped. Area closures can be lifted. End up with minimal negative impact from active fire. Fire kept within identified containment areas.</p>							
7. Special Instructions:							
<ul style="list-style-type: none"> IA Resources For planned dozer line operations, get proposed locations uploaded in Field Maps 24-48 hours ahead of time. Defensive and direct suppression operations are approved on all federal lands; notify READs of implementation. Archaeologist - Emily Swett, 435-531-7186, Roy Plank, 307-620-9950, Kandi Ruton, 435-253-4088. READ(T) - McCall Davis, 435-310-0123, Hunter Norris, 435-253-2587, Mark Dean, 435-253-0978. Ensure positive communication when moving between divisions. Use caution when working in WUI areas and around powerlines. See Wildland Urban Interface (WUI) Firefighting on p. 11, and Powerline Safety on p. 22 of the IRPG. REMS 2 is a resource for all of Branch II. 							
8. Division/Group Communication Summary							
Function	Channel	RX Frequency N/W	RX Tone/NAC	TX Frequency N/W	TX Tone/NAC	Mode	
TACTICAL	2	168.2000	146.2	168.2000	146.2	A	
COMMAND	7	169.7500	146.2	167.1000	146.2	A	
COMMAND	8	170.6875	146.2	166.5750	146.2	A	
COMMAND	9	169.5375	146.2	164.7125	146.2	A	
COMMAND	10	173.0375	146.2	167.3250	146.2	A	
AIR TO GROUND	13	170.5000		170.5000		A	
AIR TO GROUND	14	166.3250	146.2	166.3250	146.2	A	
9. Prepared By (Resource Unit Leader)			Approved By (Planning Section Chief)			Date	
CONNIE WOODCOCK			MIKE KLASSEN			08/01/2025	
						2000	

Division/Group Assignment List (ICS 204 WF)

Controlled Unclassified Information//Basic

1. Incident Name:				3.		
MONROE CANYON				Branch:	Division/Group: NIGHT EAST	
2. Operational Period: DAY/NIGHT						
Date/Time From: 08/02/2025 0600 SAT		Date/Time To: 08/03/2025 0600 SUN				
4. Operations Personnel						
FIELD OPERATIONS CHIEF		ERIC NOLAN DONOVAN WALKER (T)		NIGHT OPS		JASON PACKARD
DIVISION/GROUP SUPERVISOR		KELLY MATTHEWS				
5. Resources Assigned this Period						
Strike Team / Task Force / Resource Designator	LWD	Leader	Number Persons	Drop Off PT./Time	Pick Up PT./Time	
C-29 CR2I FULTON IHC	08/14	ZACHARY COGSWELL	22	ICP/1800	ICP/1000	
C-31 CRW1 GOLDEN EAGLES IHC	08/13	ROBERT VILLEGAS	20	ICP/1800	ICP/1000	
C-19 CR2I DROMEDARY PEAK	08/12	CALEB BLEDSOE	21	ICP/1800	ICP/1000	
C-32 CRW2 RJT CONTRACTING INC	08/14	SALVADOR CARRILLO	20	ICP/1800	ICP/1000	
E-6123 ENG4 FLAMECATCHERS 12	08/09	KIM PIERSOL	3	ICP/1800	ICP/1000	
E-71 ENG6 FARR WEST FIRE	08/09	ANTHONY GORDON	3	ICP/1800	ICP/1000	
E-72 ENG6 NORTHERN UTAH FIRE	08/10	KRISTA SPRAYCAR	3	ICP/1800	ICP/1000	
E-123 ENG6 LONE PEAK E6201	08/13	CHRIS LAWRENCE	5	ICP/1800	ICP/1000	
E-153 WTT2 CENTRAL VALLEY FIRE LLC	08/14	JEFF NEVINS	3	ICP/1800	ICP/1000	
E-149 DZR2 MOUNTAIN LANDSCAPING	08/14	SHANE EDMONDS	2	ICP/1800	ICP/1000	
E-174 DZR2 CUTTING EDGE CONTRACTORS	08/14	MIKE DAVIS	2	ICP/1800	ICP/1000	
O-99 TFLD	08/13	ALAN KIRBY	1	ICP/1800	ICP/1000	
O-137 REMS 4 REMOTE MEDICAL RESCUE	08/14	ZACHARY SCHWALBE	4	ICP/1800	ICP/1000	
O-5171 SOFC	08/11	BRAD LIDELL	1	ICP/1800	ICP/1000	
O-5176 EMPF	08/09	SCOTT MCALEB	1	ICP/1800	ICP/1000	
A-74 UMOD UAS UR32	08/02	JACOB SCHULER	1	ICP/1800	ICP/1000	
8. Division/Group Communication Summary						
Function	Channel	RX Frequency N/W	RX Tone/NAC	TX Frequency N/W	TX Tone/NAC	Mode
TACTICAL	4	166.7250	146.2	166.7250	146.2	A
COMMAND	8	170.6875	146.2	166.5750	146.2	A
COMMAND	9	169.5375	146.2	164.7125	146.2	A
AIR TO GROUND	13	170.5000		170.5000		A
9. Prepared By (Resource Unit Leader)		Approved By (Planning Section Chief)		Date		Time
CONNIE WOODOCK		MIKE KLASSEN		08/01/2025		2000

Division/Group Assignment List (ICS 204 WF)

Controlled Unclassified Information//Basic

1. Incident Name:				3.			
MONROE CANYON				Branch:		Division/Group: NIGHT EAST	
2. Operational Period: DAY/NIGHT							
Date/Time From: 08/02/2025 0600 SAT		Date/Time To: 08/03/2025 0600 SUN					
4. Operations Personnel							
FIELD OPERATIONS CHIEF		ERIC NOLAN DONOVAN WALKER (T)		NIGHT OPS		JASON PACKARD	
DIVISION/GROUP SUPERVISOR		KELLY MATTHEWS					
5. Resources Assigned this Period							
Strike Team / Task Force / Resource Designator		LWD	Leader	Number Persons	Drop Off PT./Time	Pick Up PT./Time	
6. Control Operations/Work Assignments:							
<p>TASK: Patrol and monitor fire area throughout night. Patrol for flare-ups and spot fires, extinguishing where applicable. Continue day operations efforts to ensure continuity including line construction, maintaining water delivery systems, firing, holding, and structure protection. Maintain suppression presence in evacuated areas.</p> <p>PURPOSE: Provide continuity of operations and 24/7 coverage plus maintain situational awareness of fire area 24/7 to ensure established suppression lines hold and further fire damage to private property is minimized or eliminated.</p> <p>END STATE: Fire growth and risk has been minimized such that night time operations are no longer needed. No further impact to private property from fire. Fire kept to containment lines.</p>							
7. Special Instructions:							
<ul style="list-style-type: none"> For planned dozer line operations, get proposed locations uploaded in Field Maps 24-48 hours ahead of time. Defensive and direct suppression operations are approved on all federal lands; notify READs of implementation. Archaeologist - Emily Swett, 435-531-7186, Roy Plank, 307-620-9950, Kandi Ruton, 435-253-4088. READ(T) - McCall Davis, 435-310-0123, Hunter Norris, 435-253-2587, Mark Dean, 435-253-0978. Use caution when working in country not seen in daylight, in WUI areas, and around powerlines. See Wildland Urban Interface (WUI) Firefighting on p. 11, and Powerline Safety on p. 22 of the IRPG. Meals will be provided at ICP. 							
8. Division/Group Communication Summary							
Function	Channel	RX Frequency N/W	RX Tone/NAC	TX Frequency N/W	TX Tone/NAC	Mode	
TACTICAL	4	166.7250	146.2	166.7250	146.2	A	
COMMAND	8	170.6875	146.2	166.5750	146.2	A	
COMMAND	9	169.5375	146.2	164.7125	146.2	A	
AIR TO GROUND	13	170.5000		170.5000		A	
9. Prepared By (Resource Unit Leader)			Approved By (Planning Section Chief)			Date	Time
CONNIE WOODOCK			MIKE KLASSEN			08/01/2025	2000

Controlled Unclassified Information//Basic

ICS 204 WF (1/14) **Controlled Unclassified Information//Basic** Page 1 of 2
FINAL

Division/Group Assignment List (ICS 204 WF)

Controlled Unclassified Information//Basic

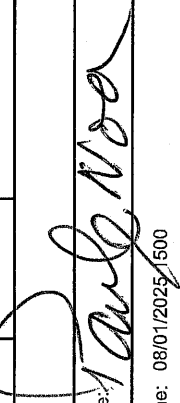
1. Incident Name:				3.			
MONROE CANYON				Branch:		Division/Group: NIGHT WEST	
2. Operational Period: DAY/NIGHT							
Date/Time From: 08/02/2025 0600 SAT		Date/Time To: 08/03/2025 0600 SUN					
4. Operations Personnel							
FIELD OPERATIONS CHIEF		ERIC NOLAN DONOVAN WALKER (T)		NIGHT OPS		JASON PACKARD	
DIVISION SUPERVISOR		JAZZ BEYUKA					
5. Resources Assigned this Period							
Strike Team / Task Force / Resource Designator		LWD	Leader	Number Persons	Drop Off PT./Time	Pick Up PT./Time	
6. Control Operations/Work Assignments:							
<p><u>TASK:</u> Patrol and monitor fire area throughout the night. Patrol for flare-ups and spot fires, extinguishing where applicable. Continue day operations efforts to ensure continuity including line construction, maintaining water delivery systems, firing, holding, and structure protection.</p> <p>Maintain suppression presence in evacuated areas.</p> <p><u>Purpose:</u> Provide continuity of operations and 24/7 coverage plus maintain situational awareness of fire area 24/7 to ensure established suppression lines hold and further fire damage to private property is minimized or eliminated.</p> <p><u>END STATE:</u> Fire growth and risk has been minimized such that night time operations are no longer needed. No further impact to private property from fire. Fire is kept within containment lines.</p>							
7. Special Instructions:							
<ul style="list-style-type: none"> • For planned dozer line operations, get proposed locations uploaded in Field Maps 24-48 hours ahead of time. • Defensive and direct suppression operations is approved on all federal lands; notify READs of implementation. • Archaeologist - Emily Swett, 435-531-7186, Roy Plank, 307-620-9950, Kandi Ruton, 435-253-4088. • READ(T) - McCall Davis, 435-310-0123, Hunter Norris, 435-253-2587, Mark Dean, 435-253-0978. • Use caution when working in country not seen in daylight, in WUI areas, and around powerlines. See Wildland Urban Interface (WUI) Firefighting on p. 11, and Powerline Safety on p. 22 of the IRPG. Meals will be provided at ICP 							
8. Division/Group Communication Summary							
Function	Channel	RX Frequency N/W	RX Tone/NAC	TX Frequency N/W	TX Tone/NAC	Mode	
TACTICAL	4	166.7250	146.2	166.7250	146.2	A	
COMMAND	7	169.7500	146.2	167.1000	146.2	A	
COMMAND	8	170.6875	146.2	166.5750	146.2	A	
AIR TO GROUND	13	170.5000		170.5000		A	
9. Prepared By (Resource Unit Leader)			Approved By (Planning Section Chief)		Date		Time
CONNIE WOODOCK			MIKE KLASSEN		08/01/2025		2000

INCIDENT RADIO COMMUNICATIONS PLAN (ICS 205)

Controlled Unclassified Information//Basic

1. Incident Name:		2. Date/Time Prepared:		3. Operational Period:		DAY/NIGHT	
MONROE CANYON		Date: 08/01/2025 Time: 1500		Date/Time From: 08/02/2025 0600 SAT		Date/Time To: 08/03/2025 0600 SUN	

4. Basic Radio Channel Use:										
Zone Group	Ch #	Function	Channel Name/Trunked Radio System Talkgroup	Assignment	RX Freq	RX Tone/NAC	TX Freq	TX Tone/NAC	Mode (A,D, or M)	Remarks
	1	TACTICAL	TAC 1	DIV G	168.0500	146.2	168.0500	146.2	A	
	2	TACTICAL	TAC 2	DIV D, STRUCTURE	168.2000	146.2	168.2000	146.2	A	
	3	TACTICAL	TAC 3	DIV M	168.6000	146.2	168.6000	146.2	A	
	4	TACTICAL	TAC 4	DIV A, K, NIGHT E, NIGHT W	166.7250	146.2	166.7250	146.2	A	
	5	TACTICAL	TAC 5	DIV Z, E	166.7750	146.2	166.7750	146.2	A	
	6	TACTICAL	TAC 6	DIV W, BEAR VLY	168.2500	146.2	168.2500	146.2	A	
	7	COMMAND	CMD 7	DIV D, M, W, NIGHT W, BEAR VLY	169.7500	146.2	167.1000	146.2	A	STRUCTURE DIV GLENWOOD MTN
	8	COMMAND	CMD 8	DIV A, D, E, NIGHT W	170.6875	146.2	166.5750	146.2	A	STRUCTURE DIV MONUMENT HILL
	9	COMMAND	CMD 9	DIV K, W, Z, NIGHT E, BEAR VLY	169.5375	146.2	164.7125	146.2	A	STRUCTURE DIV ABE'S KNOLL
	10	COMMAND	CMD 10	DIV G, K, M, NIGHT E, BEAR VLY	173.0375	146.2	167.3250	146.2	A	STRUCTURE DIV MORMON PEAK
	11	COMMAND	WHT PINE	BRANCH I IA	172.2500		165.0125	110.9	A	FS BACKUP RPTR
	12	COMMAND	PARKER	BRANCH II & III IA	172.2500		165.0125	167.9	A	FS BACKUP RPTR
	13	AIR TO GROUND	A/G PRI	A/G PRIMARY	170.5000		170.5000		A	
	14	AIR TO GROUND	A/G SEC	A/G SECONDARY	166.3250	146.2	166.3250	146.2	A	
	15	AIR TO GROUND	V/MED 28	MEDIVAC	155.3400	156.7	155.3400	156.7	A	
	16	AIR GUARD	AIRGUARD	EMERGENCY	168.6250		168.6250	110.9	A	

5. Special Instructions:	
<div style="text-align: right;">  Signature: Paul Noa </div>	
6. Prepared By	Name: PAUL NOA
ICS 205	IAP Page
Date/Time: 08/01/2025/1500	

SAFETY MESSAGE

SAFETY IS OUR FIRST PRIORITY

Firefighter safety comes first on every fire, every time.

Incident: Monroe Canyon Fire	Date: August 2, 2025	Shift: Day and Night
------------------------------	----------------------	----------------------

SAFETY THOUGHT

Incident Within an Incident (IWI)

An Incident Within an Incident (IWI) occurs when an emergency, such as an injury or missing firefighter, disrupts normal wildland firefighting operations. To ensure safety and effective response:

- **Stay calm, assess, and report:** Immediately notify your supervisor, or Command, via radio with clear details—location, nature of the emergency, and resources needed. Use the “Medical Incident Report” protocol in the Incident Response Pocket Guide (IRPG).
- **Prioritize life safety:** Stop non-critical tasks, secure the scene, and provide first aid if trained and safe to do so.
- **Maintain communication:** Ensure continuous contact with the affected individual, or team, and relay updates to Command.
- **Know your role:** Follow the chain of command and avoid freelancing. Only those assigned to the IWI should engage in the response.
- **Prepare in advance:** Regularly review IWI protocols, carry the IRPG, and know evacuation routes and medical resources.

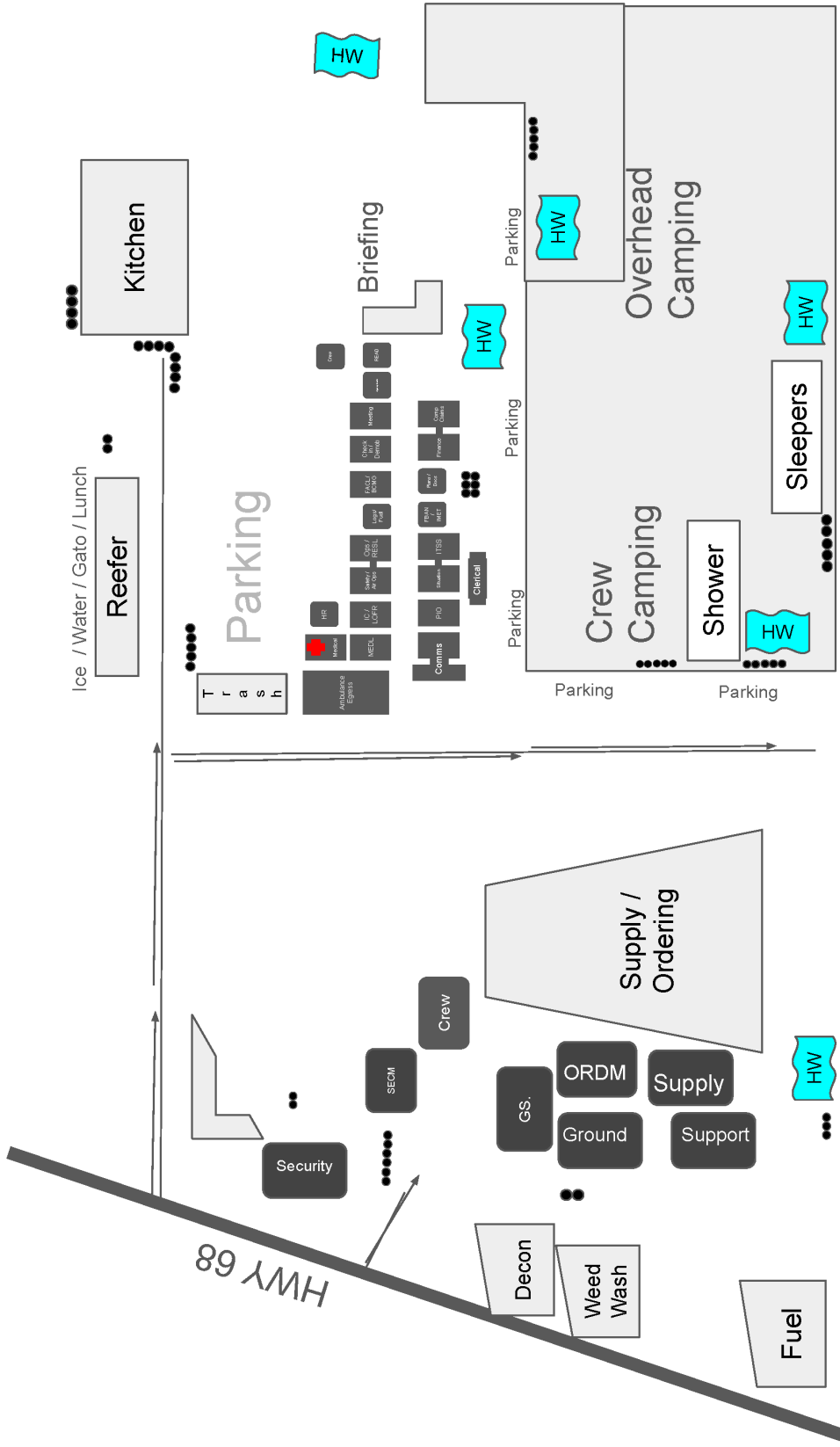
Swift coordinated action saves lives. Stay vigilant, stay prepared, and prioritize safety in every decision you make.

MAJOR HAZARDS and RISKS

A- New comms channels B- Fatigue and over exertion C- Air ops/overhead hazards	D- Driving on incident roadways E- Extreme fire behavior F- Heat exposure and dehydration	G- Heavy equipment operations H- Steep terrain & rolling hazards I- Hazard trees
--	---	--

Line Safety Officers	Safety Officers
See IAP	Paul Gauchay, Daniel Probert (t), Gregg Christensen

Logistics



Greenwich ICP Facilities:

Showers

- 0500-1200 / 1400-2200

Meals:

- 0530-0900
- (Lunch @ Reefer)
- 1800-2130

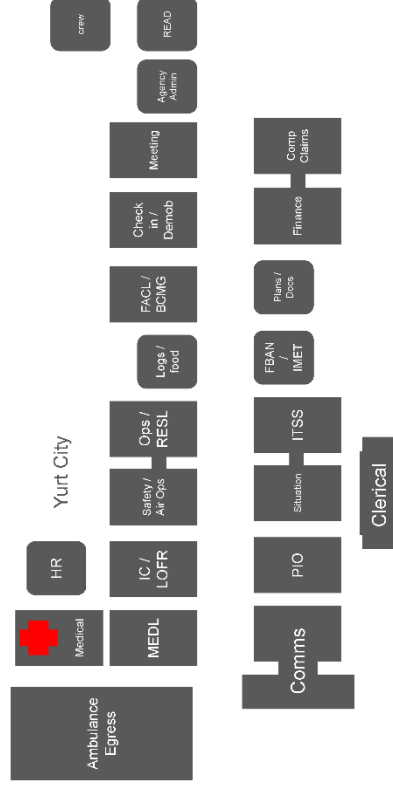
Weed Wash / Inspections:

- 0700-1800
- 1900-2100

Sleepers:

- Available 24/7 for any amount of hours.

ICP Yurt Layout





Human Resources Message

Your Human Resource Specialist is here on the incident!

My role as a Human Resource Specialist (HRSP) is to be a focal point for informal resolution of issues and concerns involving discrimination or harassment. I also serve as an open channel through which individuals assigned to this fire can raise questions, discuss concerns, and get answers about any aspect of their work environment — be it practices, policies, operating procedures, facilities, or work conditions.

If you need to talk about a concern, please contact me at the Human Resources yurt next to the MEDL yurt.

Todd Buchholz 541-580-4890 Todd_Buchholz@Firenet.gov

Did you know: African lions catch about 20% of the prey they chase. Dragonflies catch 95%.

Monroe Canyon – Finance

Incident Number: UT-FIF-250223 / Finance Codes: P4 S5CN, 0408

Please turn all documents that pertain to your assignments into Finance daily.

Include your resource number in the subject line.

2025.monroecanyon.finance@firenet.gov

Comp/Claim

Property loss or damage information needed: OF-289

Email Subject line: Claims

Attachments: Completed property loss and damage reports, damage pictures, and 2 cost estimates

AD Employees: Please bring your paperwork into finance ASAP



VIRTUAL TRAINING SUPPORT IS AVAILABLE



Brian Lamphiear TNSP
rist.resources@firenet.gov
916-584-3748

DONT WAIT! Please register your training assignment.

To receive a final training packet, you must:

- 1.) Register your assignment with the training QR Code. Prior to demob, ensure your trainer documents the assignment in your task book and completes a performance evaluation for you.
- 2.) Use the QR code to complete your training assignment before you leave. This will generate e-mail to your home unit recording your training assignment on Monroe Canyon. Electronic copies of performance evaluations and task book evaluation records can be accessed with the link tree using the QR code on the front page of the IAP.

Public Information

Call - (435)280-2269 (8AM-8PM)

Email - 2025.MonroeCanyon@Firenet.gov

GET MAIL DELIVERED



Name & Resource Number
General Delivery
Monroe Canyon Fire
Koosharem, Utah 84744

HELP US TELL THE FIRE STORY



EMAIL PHOTOS TO : 2025.MonroeCanyon@Firenet.gov

These photos may be shared on social media. As such, people must have on PPE required for the work being done. Please provide a brief overview of the photo to include – location, time, what is being done and any other info needed to "tell the story". For photo credit, include your full name.

LOST AND FOUND



LOCATED IN THE PIO SHOP



A special thank you video from
Congresswoman Celeste Maloy



MONROE CANYON FIRE

UT-FIF-250223

8-2-2025 to 8-4-2025

DEMOBILIZATION CHECK-OUT PROCESS and TENTATIVE RELEASE

Please do not leave the incident until the following steps have been completed!

- If you need a flight arranged for you, please contact Demob at 208-571-0336 or Email: 2025.monroe.demob@firenet.gov 72 hrs before your Demob date
1. **On your demob date**, please check out with the following units.
 - Demob – pick up Form 221 to have units sign off.
 - Supply Unit – Return gear and supplies.
 - Ground Support– Return pool NERV rentals, receive inspections, including NERV Rentals pre and post, etc.
 - Weed Wash – Mandatory Weed Wash for all vehicles.
 - Decon – Mandatory Decon for all internal tanks.
 - Communications Unit – Return Radios and other communications equipment.
 - Time/Finance – Ensure that all CTRs and/or shift tickets have been submitted and **you have received your final, signed OF-288 Time Report or OF-286 invoice.**
 2. **Once you have completed the above steps**, return 221 to Demob.
 3. Any questions? Contact Demob Unit Leader
 - Demob Unit Leader: (208) 571-0336, 2025.monroe.demob@firenet.gov
-

DEMOB date 8/2/2025

C-7015	CR2I	Grayback Forestry
E-6101	ENG4	IDBOD 1422
E-6102	ENG4	IDBOD 1421
O-5060	FMOD	Alpine Forestry
O-5087	TFLD	Harger, Joseph
O-5094	RADO	Kmak, Casey
O-5149	TNSP	Koehn, Giselle

DEMOB date 8/3/2025

A-74	UMOD	Fs R5 Ai Mod 1
C-7034	CRW1	Lone Peak Ihc
O-11	DIVS	Cornwall, Kelly
O-5084	HEQB	Sandford, Charles
O-5085	HEQB	Ishler, Tyler
O-5086	HEQB	Behrends, Nicholas
O-5093	LOFR	Acuna, Guy
O-5096	HEQB	Read, William
O-5101	TFLD	Sanders, John
O-5105	EMPF	Emrich, Matthew
O-5106	EMPF	Wilderness Medics
O-5111	DIVS	Arnold, Elliott
O-5134	ARCH	Corbeil, Marcel
O-5140	SOFC	Malloy, Bruce

MONROE CANYON FIRE

UT-FIF-250223

8-2-2025 to 8-4-2025

DEMOB date 8/4/2025

C-7026	CRW1	Cedar City Ihc
C-7027	CRW1	Alta Ihc
C-7028	CRW1	Ruby Mountain Ihc
C-7031	CR2I	Fishlake Interagency
E-36	WTS2	Black Operations
E-195	MBM1	Upper Valley Contracting
E-6065	WTS2	Cowboy Contracting
E-6093	DZR2	Emery Farm Inc
E-6095	DZR2	Jdb3 Llc
E-6098	WTS2	Alpine Transport Inc
E-6103	HETF	Upper Valley Contracting
E-6131	CHP2	Torch Fire And Security
O-40	ATGS	Hall, Craig
O-47	FOBS	Meginley Jr, William
O-48	FOBS	Pippin, Brian
O-145	READ	Rasmussen, Kreig M
O-5041	BCMG	Johnson, Devin Kent
O-5048	EQPM	Taylor, Brian
O-5049	EQPM	Miller, Casey
O-5068	REAF	Keys, Jeremy Ka'ano'i
O-5083	DIVS	Zach, Dan
O-5088	TFLD	Raun, Andrew
O-5089	OPBD	Bowden, Michael
O-5099	TFLD	Davis, Charles
O-5107	PIO3	Clark, Jess
O-5114	TFLD	Alcaraz-Lopez, Jorge
O-5119	EMPF	Portz, John
O-5120	EMPF	Frontlineems
O-5122	DIVS	Creeden, William
O-5123	DIVS	Mitchell, Paul
O-5124	EQTR	Lopez, Debra
O-5129	BCMG	Stewart, Casey
O-5186	COMT	Whaley, Mathias

Important Phone Numbers

Operations Chiefs

Isaac Powning	Planning	775.233.0936
Korby Fraughton	Planning (t)	435.592.4859
Cody Mandeville	Strategic	775.287.2624
Jason Packard	Night	352.442.2896
Eric Nolan	Field	775.455.5436
Donovan Walker	Field (t)	775.304.1001

Safety

Paul Gauchay	Officer	801.885.7556
Temple Fletcher	MEDL	775.742.3245

Liaison Officers

Jeremy Hales		435.671.6025
Mark Wilson		928.405.9259
Jenna Giddens		559.623.6441
Earl Wooten (t)		863.634.1548

Logistics Section

Glen Chapell	Chief	435.979.8341
Gordon Bell	Ground Support	435.979.1778
Kent Chappell	Snow College Spike	435.691.2967
Kim Stone	Supply	907.460.8216
Paul Noa	COML	850.276.5428

Planning Section

Michael Klassen	Chief	850.573.2292
Sean Allen	Deputy Chief	239.302.8452
Caleb Cravens	IMET (t)	931.510.9062
John Kern	FBAN	352.428.8239
Wendy Christopher	DMOB	208.571.0336
Aaron Zobell	READ	385.238.0389
Todd Buchholz	HRSP	541.580.4890

MONROE CANYON FIRE WATER TENDERS AND ENGINES

Aquatic Invasive Species Decontamination Protocol for Demob

Water drafted from the Monroe Canyon fire is contaminated with Aquatic Invasive Species.

Decontamination will need to occur before demobing and going to another incident.

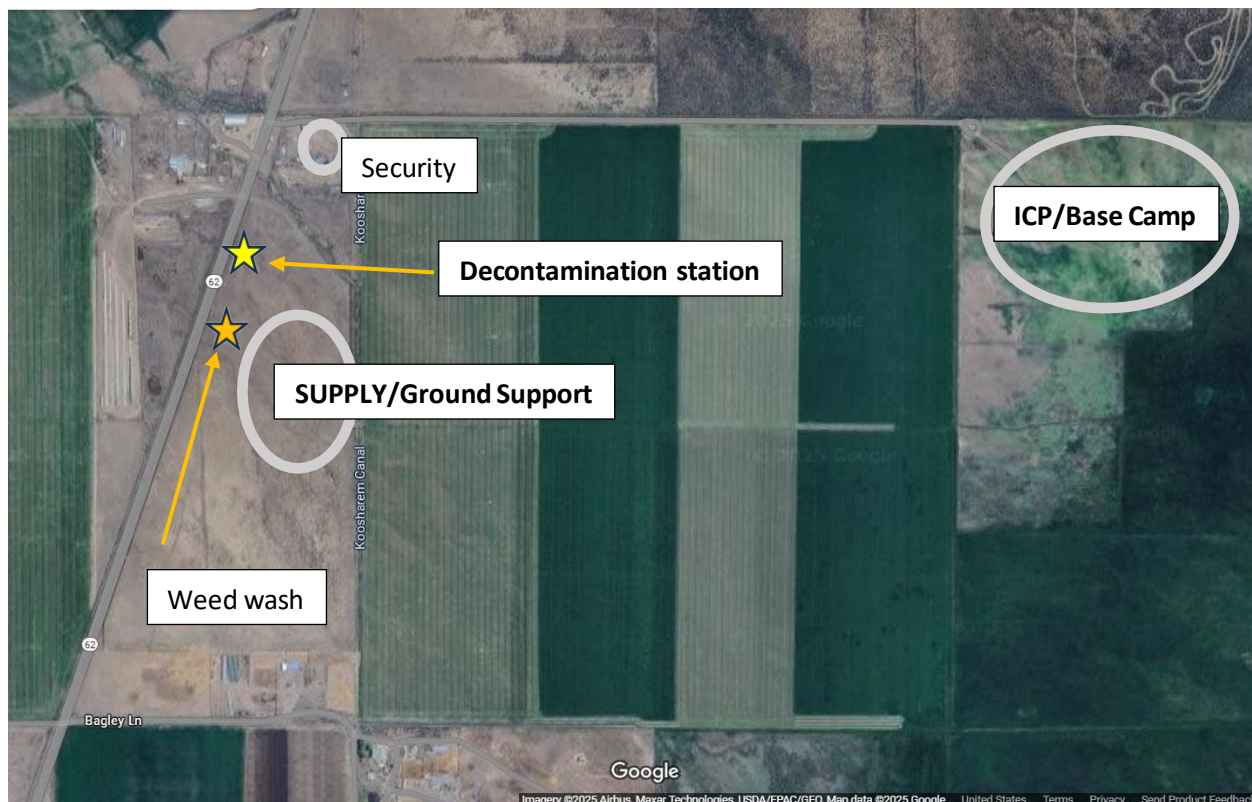
Location: the decontamination station is located at **SUPPLY/Ground Support** - west of Base Camp in Greenwich, UT (next to weed wash).

Hours of operation: 0700 – 2000

Resource Advisor Team contacts: Aaron Zobell 385-238-0389

Process:

1. Engines should arrive at the decontamination station empty (empty your tank in dry areas. away from streams, canals, wetlands, lakes, reservoirs, etc.).
2. Draft disinfectant into engines and/or tenders. Soak foot valves in disinfectant tank.
3. Wait 10 minutes for solution to kill aquatic invasive species.
4. After 10 minutes the disinfectant can be released back into the disinfectant tank.
5. Draft rinse water into your tank with then dump it back into the rinse tanks. Do this three times to thoroughly rinse your tank. Soak your foot valves in rinse water.
6. Congratulations! You are now decontaminated. Staff will sign your demob checklist.



[illegible]

MEDICAL PLAN (ICS 206 WF)

Incident/Project Name			Operational Period				
Monroe Canyon			08/02/2025 0600- 08/3/2025 0600				
Ambulance Services							
Name	Complete Address	Frequency	ALS				
Yes	No						
Sevier County Volunteer Ambulance	50 Westview Drive, Richfield, Utah	Richfield Dispatch 435-896-6471	X				
Monroe Volunteer Ambulance	110 S 300 W, Monroe, Utah	Richfield Dispatch 435-896-6471	X				
Air Rescue/Air Ambulance Services							
Name	Number	Type of Aircraft & Capability					
Classic Air Medical	Request through Richfield Dispatch	AS350B3 Air Ambulance, NVG, Nurse/Medic					
Hospitals							
Name Complete Address	DD° MM.MMM' N - Lat DD° MM.MMM' W - Long		ETA GRD AIR	Phone	Helipad Yes No		Level of Care
Sevier Valley Hospital 1000 N Main St Richfield, Utah	Lat:	38°46.98'N	45min (G) 25 mins (A) ALL TIMES ARE FROM ICP	435-893-0327 435-893-4182	X		Level 4 Critical Care Center ER 24/7
	Long:	112°04.98'W					
Utah Valley Hospital 1034 N 500 W Provo, Utah	Lat:	40°14.78'N	135 mins (G) 40mins (A) ALL TIMES ARE FROM ICP	435-357-7002 801-357-7850	X		Level 2 Trauma Center 24/7
	Long:	111°39.93'W					
University of Utah 50 N Medical Dr. Salt Lake City, Utah	Lat:	40°46.36'N	3hrs (G) 50min (A) ALL TIMES ARE FROM ICP	801-587-7545 801-581-2292	X		Level 1 Trauma/Burn Center 24/7
	Long:	111°50.23'W					
Intermountain Medical Center 5121 S Cottonwood St, Murray, UT 84107	Lat:	40°39.62'N	2hrs 45min (G) 45 min (A) ALL TIMES ARE FROM ICP	801-533-8080 801-507-6600	X		Level 1 Trauma Center 24/7
	Long:	111°53.38'W					
Division/Branch/ Group		Responding Medical Personnel					
ICP		EMS Personnel:		Temple Fletcher MEDL 775-742-3245 Garrett Stallings MEDL 928-245-2115 Sam Brogna MEDL (T) 775-450-8767 Laura Baker MEDL (T) 775-720-7175 AMBO 4 563-557-0674			
		Equipment available on Scene:		ALS			
		Medical Emergency Channel:		Command 7, 8, 9, 10			
		Approved Helispot:		H-5			
Helibase		EMS Personnel:		EMPF Avery 801-400-1214			
		Equipment Available on Scene:		ALS			
		Medical Emergency Channel:		Command 7, 10, 11			
		Approved Helispot:		Helibase			
Division A		EMS Personnel:		AMBO 1 208-880-9327 EMPF Burns 805-515-8799 EMPF Poulson 435-680-6317			
		Equipment Available on Scene:		ALS			
		Medical Emergency Channel:		Command 8			
		Approved Helispot:		H-70			

MEDICAL PLAN (ICS 206 WF)

Division D	EMS Personnel:	REMS 3 970-942-3026 EMPF Dutton 480-486-5357 EMPF Murphy 912-441-5409
	Equipment Available on Scene:	ALS
	Medical Emergency Channel:	Command 7, 8
	Approved Helispot:	H-20
Division E	EMS Personnel:	EMPF Dobson 727-215-1381 EMPF Wallace 406-239-1811 EMPF Troublefield 910-527-8606
	Equipment Available on Scene:	ALS
	Medical Emergency Channel:	Command 8, 12
	Approved Helispot:	H-15
Division G	EMS Personnel:	REMS 2 413-446-8315 AMBO 3 865-258-3533 EMPF Biederman 513-882-2837
	Equipment Available on Scene:	ALS
	Medical Emergency Channel:	Command 10
	Approved Helispot:	H-15
Division K	EMS Personnel:	EMPF Case 801-370-3061 EMPF Oxley 360-241-3477
	Equipment Available on Scene:	ALS
	Medical Emergency Channel:	Command 9, 10
	Approved Helispot:	H-5
Division M	EMS Personnel:	AMBO 2 201-412-0647 EMPF Pope 406-370-3061 EMPF DiMauro 910-217-2195
	Equipment Available on Scene:	ALS
	Medical Emergency Channel:	Command 7, 10
	Approved Helispot:	H-12
Division W	EMS Personnel:	REMS 1 503-434-7688 EMPF Portz 928-208-8746
	Equipment Available on Scene:	ALS
	Medical Emergency Channel:	Command 7, 9
	Approved Helispot:	H-15, H-13
Division Z	EMS Personnel:	EMPF Emrich 605-858-2932 EMPF Doidge 559-265-2661
	Equipment Available on Scene:	ALS
	Medical Emergency Channel:	Command 9
	Approved Helispot:	H-10
Bear Valley Contingency	EMS Personnel:	EMPF Meade 561-317-7996
	Equipment Available on Scene:	ALS
	Medical Emergency Channel:	Command 7, 9, 10
	Approved Helispot:	H-35
Structure Group	EMS Personnel:	Unstaffed
	Equipment Available on Scene:	
	Medical Emergency Channel:	Command 7, 8, 9, 10
	Approved Helispot:	
Night East	EMS Personnel:	EMPF McCaleb 602-317-7302 REMS 4 860-248-9161
	Equipment Available on Scene:	ALS
	Medical Emergency Channel:	Command 8, 9
	Approved Helispot:	H-35


MEDICAL PLAN (ICS 206 WF)


Night West	EMS Personnel:	EMPF Drab 406-600-2059
	Equipment Available on Scene:	ALS
	Medical Emergency Channel:	Command 7, 8
	Approved Helispot:	H-12
Snow College Spike	EMS Personnel: Staffing Medical Yurt	EMTF Cate 406-920-5289 EMTF Prunier 774-303-7200
	Equipment Available on Scene:	BLS
	Medical Emergency Channel:	Command 7, 8
	Approved Helispot:	Richfield Helibase
Box Creek Spike	EMS Personnel: Madison Medical Trailer	No transport or response capabilities Packard 208-716-1466 Crittenden 208-716-3368
	Equipment Available on Scene:	ALS
	Medical Emergency Channel:	Command 9
	Approved Helispot:	H-10

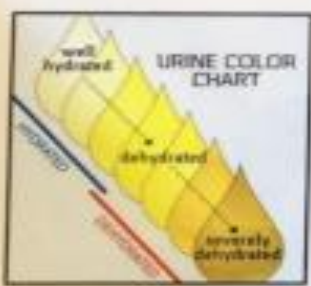
Prepared By (Medical Unit Leader)	Date/Time	Reviewed By (Safety Officer)	Date/Time
Laura Baker MEDL(t)	8/1/2025	Paul B Gauchay SOFC	8/1/2025

Smokey


Asks You To Stay Safe & Hydrated







URINE COLOR CHART



10 TIPS FOR BETTER HYDRATION

MEDICAL PLAN (ICS 206 WF)

Medical Incident Report					
FOR A NON-EMERGENCY INCIDENT, WORK THROUGH CHAIN OF COMMAND TO REPORT AND TRANSPORT INJURED PERSONNEL AS NECESSARY. FOR A MEDICAL EMERGENCY: IDENTIFY ON SCENE INCIDENT COMMANDER BY NAME AND POSITION AND ANNOUNCE "MEDICAL EMERGENCY" TO INITIATE RESPONSE FROM ICP COMMUNICATIONS.					
Use the following items to communicate situation to ICP COMMUNICATIONS.					
1. CONTACT ICP COMMUNICATIONS: (Verify correct frequency prior to starting report) <i>Ex: "Communications, Div. Alpha. Stand-by for Emergency Traffic."</i>					
2. INCIDENT STATUS: Provide incident summary (including number of patients) and command structure. <i>Ex: "ICP Communications, I have a Red priority patient, unconscious, struck by a falling tree. Requesting air ambulance to Forest Road 1 at (Lat./Long.) This will be the Trout Meadow Medical, IC is TFLD Jones. EMT Smith is providing medical care."</i>					
Severity of Emergency / Transport Priority	<input type="checkbox"/> RED / PRIORITY 1 Life or limb threatening injury or illness. Evacuation need is IMMEDIATE <i>Ex: Unconscious, difficulty breathing, bleeding severely, 2° – 3° burns more than 4 palm sizes, heat stroke, disoriented.</i> <input type="checkbox"/> YELLOW / PRIORITY 2 Serious Injury or illness. Evacuation may be DELAYED if necessary. <i>Ex: Significant trauma, unable to walk, 2° – 3° burns not more than 1-3 palm sizes.</i> <input type="checkbox"/> GREEN / PRIORITY 3 Minor Injury or illness. Non-Emergency transport <i>Ex: Sprains, strains, minor heat-related illness.</i>				
Nature of Injury or Illness & Mechanism of Injury			Brief Summary of Injury or Illness (Ex: Unconscious, Struck by Falling Tree)		
Transport Request			Air Ambulance / Short Haul/Hoist Ground Ambulance / Other		
Patient Location			Descriptive Location & Lat. / Long. (WGS84)		
Incident Name			Geographic Name + "Medical" (Ex: Trout Meadow Medical)		
On-Scene Incident Commander			Name of on-scene IC of Incident within an Incident (Ex: TFLD Jones)		
Patient Care			Name of Care Provider (Ex: EMT Smith)		
3. INITIAL PATIENT ASSESSMENT: Complete this section for each patient as applicable (start with the most severe patient)					
Patient Assessment: See IRPG PAGE 108					
Treatment:					
4. TRANSPORT PLAN:					
Evacuation Location (if different): (Descriptive Location (drop point, intersection, etc.) or Lat. / Long.) Patient's ETA to Evacuation Location:					
Helispot / Extraction Site Size and Hazards:					
5. ADDITIONAL RESOURCES / EQUIPMENT NEEDS:					
Example: Paramedic/EMT, Crews, Immobilization Devices, AED, Oxygen, Trauma Bag, IV/Fluid(s), Splints, Rope rescue, Wheeled litter, HAZMAT, Extrication					
6. COMMUNICATIONS: Identify State Air/Ground EMS Frequencies and Hospital Contacts as applicable					
Function	Channel Name/Number	Receive (RX)	Tone/NAC	Transmit (TX)	Tone/NAC
COMMAND					
AIR-TO-GRND					
TACTICAL					
7. CONTINGENCY: Considerations: If primary options fail, what actions can be implemented in conjunction with primary evacuation method? Be thinking ahead.					
8. ADDITIONAL INFORMATION: Updates/Changes, etc.					
REMEMBER: Confirm ETA's of resources ordered. Act according to your level of training. Be Alert. Keep Calm. Think Clearly. Act Decisively.					