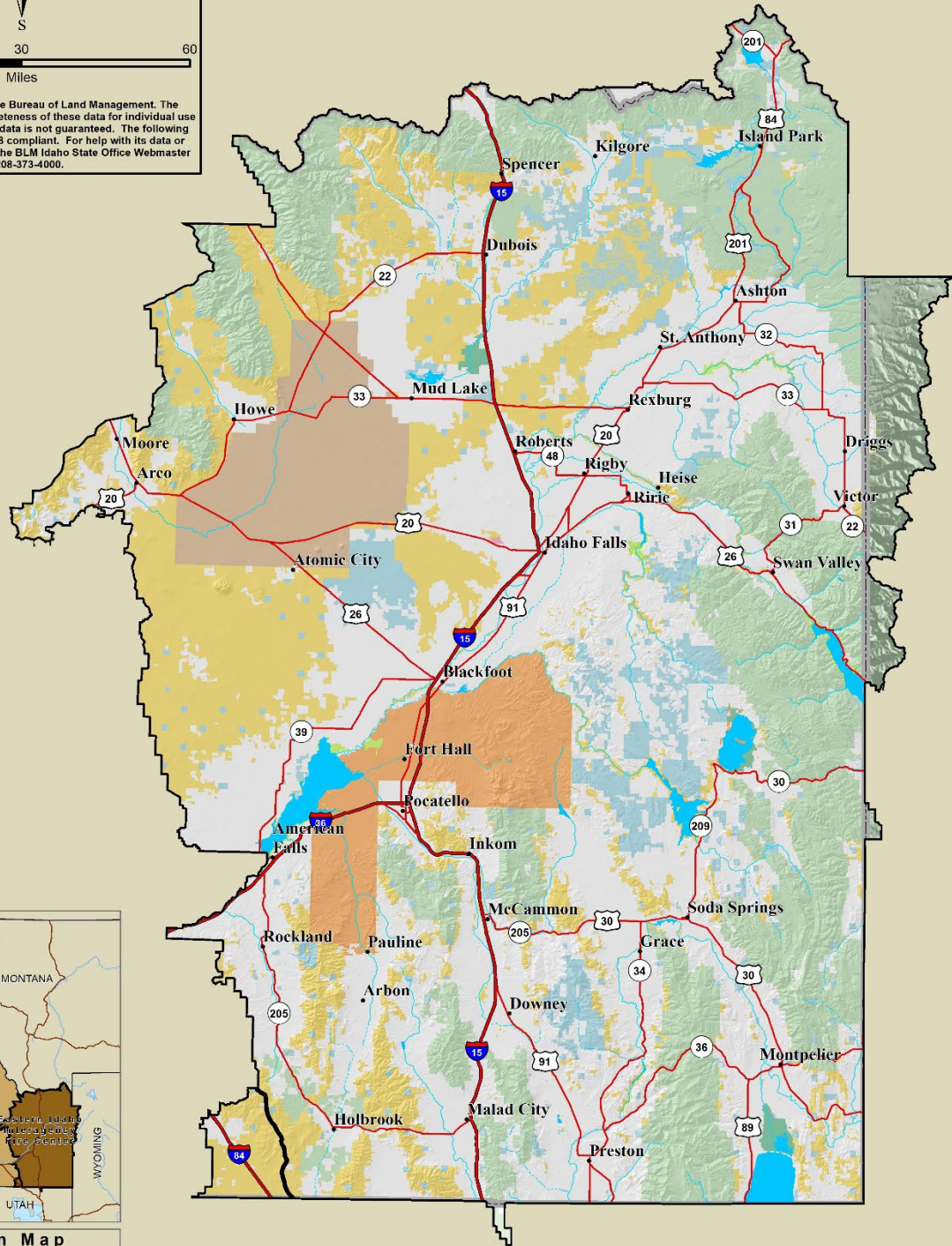


Eastern Idaho Interagency Fire Center Area



No warranty is made by the Bureau of Land Management. The accuracy, reliability, or completeness of these data for individual use or aggregate use with other data is not guaranteed. The following cannot be made Section 508 compliant. For help with its data or information, please contact the BLM Idaho State Office Webmaster at 208-373-4000.



Eastern Idaho Interagency Dispatch Area Overview

General Information

The East Idaho Interagency Fire Center (EIIFC) located in Idaho Falls, Idaho, has interagency fire suppression responsibility for approximately 7 million acres in southeast Idaho. This area has a history of intense wildfire activity in combination with high natural resource values. Typically, the dispatch area averages 140 wildfires per year which burn on average, 70,000 acres annually.

Pre-suppression and suppression support is provided for the Caribou/Targhee National Forest (USFS), the Idaho Falls District (BLM), Eastern Idaho Complex (FWS), Idaho Department of Lands (IDL), Idaho State Department of Fish and Game (IDFW), Bureau of Indian Affairs (Shoshone Bannock Tribe), Department of Energy (INL), Bureau of Reclamation (BOR,) and local city and county governments. We have suppression agreements with 16 counties, and 38 volunteer and paid fire departments.

The local interagency fire cache contains enough equipment and supplies to outfit more than 250 people. The cache provides support to incidents both in and out of the dispatch area.

The regular hours for the dispatch center during fire season is 0800 to 1830, seven days a week. These hours will be extended if there are fires being staffed or personnel still in the field. When the dispatch center closes for the day, the phones will be forwarded to an on-call dispatcher. The 24-hour phone number is 208-524-7604.

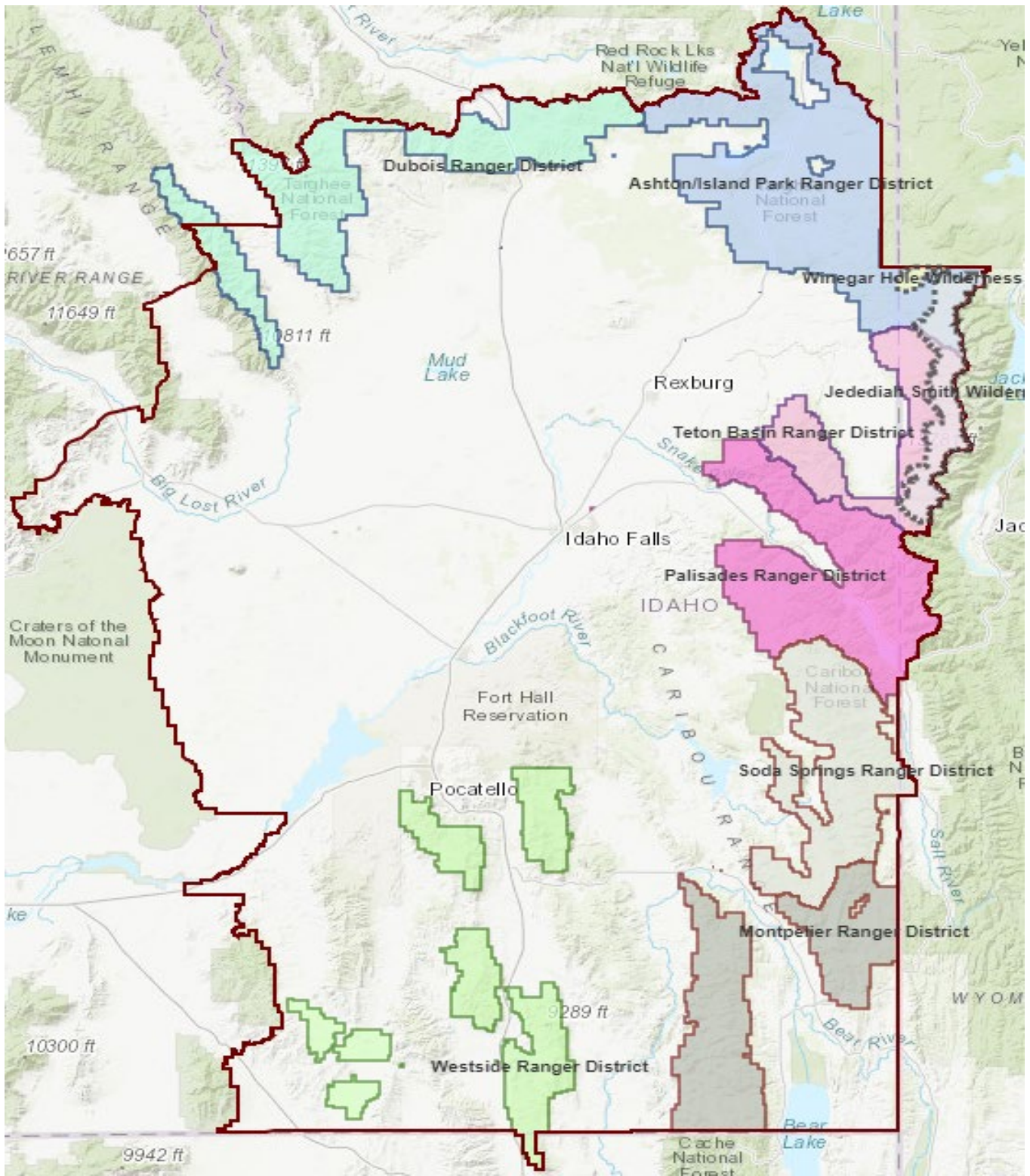
Caribou-Targhee National Forest (CTNF) and Curlew National Grasslands

The 3-million-acre Caribou-Targhee National Forest and Curlew National Grasslands in Eastern Idaho encompasses 3 states with 15 counties and stretches south to north between the Utah and Montana Stateline's. The eastern boarder extends into Wyoming and borders two national parks, Yellowstone, and Teton National Parks. The far northwestern border abuts the Salmon Challis NF along the Lemhi range west of the Birch Creek drainage. The Forest is interspersed with other federal, state and locally managed lands. Elevations range from 5,500 to 10,500 feet. Fuel types range from grass and sage to high elevation mixed conifer and aspen. There are 134,166 acres of wilderness which include: Jedediah Smith and Winegar Hole Wilderness Areas.

There are seven ranger districts assimilated into four fire management zones.

District Name	Identifier	Office Location	Zone Name
Supervisors Office		Idaho Falls, Idaho	CTNF
Dubois	D-51	Dubois, Idaho	Henry's Fork Zone
Ashton/Island Park	D-52	Ashton, Idaho	Henry's Fork Zone
Teton Basin	D-56	Driggs, Idaho	South Fork Zone
Palisades	D-54	Idaho Falls, Idaho	South Fork Zone
Westside	D-57	Pocatello, Idaho	Portneuf Zone
Montpelier	D-53	Montpelier, Idaho	Bear River Zone
Soda Springs	D-55	Soda Springs, Idaho	Bear River Zone

The CTNF Supervisor's Office is in Idaho Falls with seven Ranger Districts that have "zoned" FMOs/and Duty Officers to include adjacent districts. The Forest has 13 Type 6 engines, two Type 3 Helicopters, two- five person Fuels Crews, and one - Type 2IA Crew.



CTNF & Curlew National Grasslands Map

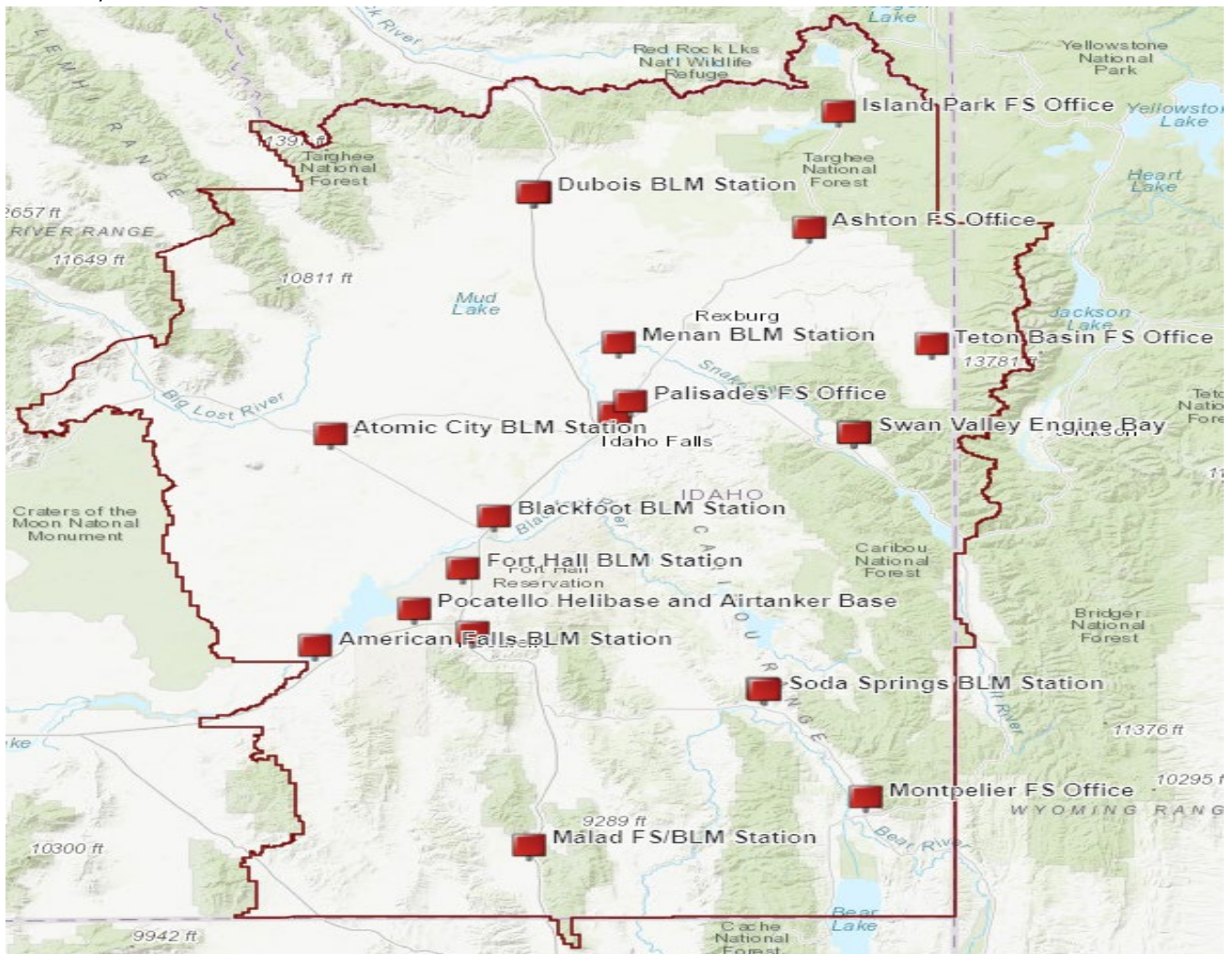
Idaho Falls District Bureau of Land Management Overview

The BLM Idaho Falls District (IFD), located in eastern Idaho, manages 3.7 million acres of public land across 16 counties in Idaho. The IFD is divided into four field offices: Challis (799,000 acres), Salmon (493,000 acres), Upper Snake (1,854,000 acres), and Pocatello (613,800 acres). Eastern Idaho Interagency Dispatch only dispatches for the Upper Snake and Pocatello field offices.

The topography and terrain differ substantially throughout the area, ranging from sagebrush steppe and desert to high elevation forests. The District boundaries stretch from the Utah border north to Montana, west to Craters of the Moon, and east to the Wyoming border.

The Upper Snake Field Office is in Idaho Falls and Pocatello Field Office is in Pocatello, Idaho. Both field offices are managed by one FMO, one AFMO with 2- Fire Operations Specialists per field office. The two field offices have 13 Type 4 engines, three Type 2 Dozers, and one Interagency Hotshot Crew.

The Challis and Salmon field offices are both under the Idaho Falls District, but fire response for these areas falls within the Central Idaho Interagency Fire Center, located in Salmon Idaho. There is an AFMO in Salmon that works for the FMO in Idaho Falls. A Type 4 and Type 6 engine are duty stationed out of Salmon.



Duty Station Map

Climate

Climate patterns are typically warm to hot and dry during the summer and fall. In the late spring and summer, moisture from the Gulf of Mexico may move north and combine with warm seasonal temperatures and topography to create high-intensity, short duration thunderstorms. Late spring events generally have more precipitation, and 24-hour totals can be greater than 0.5 inches. Dry lightning is more common during summer and fall and have potential to create multi-fire events in the Lowlands and less frequently in the Highlands.

The prevailing wind pattern during the fire season is southwest except for cold front passages which can produce erratic winds. Steep terrain and creek drainages have a heavy influence on wind. Another significant influence on fire behavior can be downslope and/or down-valley wind development once slopes are shaded from the sun, specifically in the mountain to valley topography of the Lowlands FDRA.

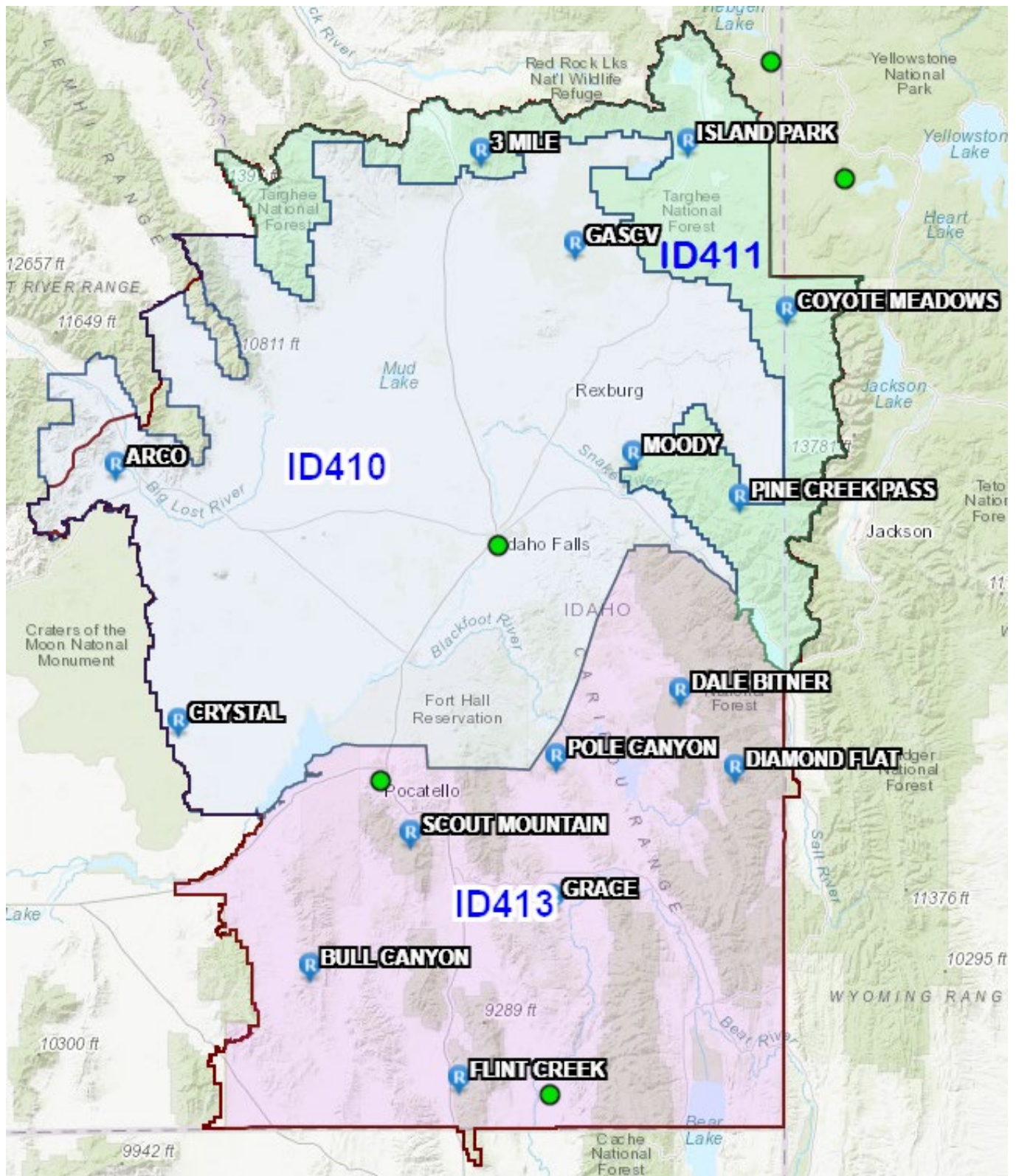
During the day, the slopes and valley floor are heated, creating relative low pressure and upslope and up-valley flow. In the early evening, a reversal in the sun's heating causes shallow layers of cold air to develop and the cold layer of air is denser than the surrounding air and as a result, it flows downslope. Down-valley winds in the Snake River Plains light flashy fuel type play a large role in fire progression and movement after sunset. Resources should be aware of and develop suppression strategies based on these shifting wind directions from upslope and up-valley to downslope and especially down-valley once the diurnal shifting occurs.

Weather Stations - There are 15 representative NFDRS RAWs in the area.

Name	Elevation	Avg Precip
3 Mile	6625'	30"
Island Park	6284'	34"
GASCV	5740'	12"
Coyote Meadows	6572'	38"
Moody	7040'	19"
Pine Creek Pass	7240'	25"
Dale Bitner	6391'	20"
Pole Canyon	6700'	27"
Diamond Flat	7500'	30"
Scout Mountain	6515'	27"
Grace	6210'	32"
Flint Creek	5200'	26"
Bull Canyon	6400'	15"
Crystal	5064'	11"
Arco	5380'	11"

Fire weather Zones

Eastern Idaho Dispatch Area has three Fire Weather Forecast Zones 410, 411, and 413.



Fire Weather Zone & RAWS Map

Fire Weather Briefings

Southeast Idaho Fire WX forecast is produced by the NWS Pocatello office. A comprehensive daily fire weather briefing is available for specifically Southeast Idaho and for Region 4 at the following web addresses:

- [Southeast Idaho Weather Hazard Briefing](https://www.weather.gov/pih/Briefing)
https://www.weather.gov/pih/Briefing
- [Great Basin Potential Fire Weather Briefing](https://gacc.nifc.gov/gbcc/outlooks.php)
https://gacc.nifc.gov/gbcc/outlooks.php
- [Pocatello Spot Forecast Monitor](https://www.weather.gov/spot/monitor/?lat=43.2&lon=-113.6&z=6&auto=yes)
https://www.weather.gov/spot/monitor/?lat=43.2&lon=-113.6&z=6&auto=yes
- [National Weather Service Fire Weather Page](https://www.weather.gov/fire/)
https://www.weather.gov/fire/

Wildland Fire Assessment System - Severe Fire Danger Index


The combination of ERC and BI can provide a gauge for daily Severe Fire Danger Index (SFDI). ERC is used to represent the underlying fuel dryness and BI can be used as a measure of the daily weather. The combination of daily weather and fuel conditions will produce the measure of significant fire potential; where a significant fire is one that is very resistant to control.

- [Severe Fire Danger Index](https://m.wfas.net/dev/)
https://m.wfas.net/dev/

Field Maps

The NIFC ArcGIS Online (AGOL) is a website that provides a common location for online mapping during wildland fire incident support and response activities which allows users to create and share maps and data. A companion application called Field Maps for ArcGIS works with AGOL and extends visualization and data collection to the field on mobile devices. The ability to take maps in the field on mobile devices, with and without cell service, makes this technology very useful for many different incident response positions.

EIIFC utilizes the BLM ID Fire-2022 (MobileEdit) map in the Idaho Fire Group to collect data for fire perimeters over ten acres. To be able to contribute to data collection in the field you must have a NIFC AGOL account to access Idaho Fire Group. If you have a NIFC AGOL account however are not a member of the Idaho Fire Group take the following steps:

- Log on to your NIFC AGOL account from a web browser (not in Field Maps App).
- Looking at the top of the home page – click on the Groups tab.
- Click the search icon – type in Idaho Fire – hit enter.
- Looking at the left side of the page - click on the Groups tab.
- Click on  Idaho Fire.
- Looking at the right side of the page - click on Join This Group.

EIIFC Aviation Resources

EIIFC fixed wing operations mostly originate from the Pocatello Airport (Pocatello Airtanker Base). The BLM air base facility provides a base of operations and support for tactical firefighting and logistical fixed wing aircraft (large airtankers, VLAT, smokejumpers, large transport, helicopters, lead/ASM/air attack, water scoopers, and SEATs).

These aircraft support wildland firefighting efforts for EIIFC as well as regionally for federal land management agencies and other cooperating agencies which fall within the air base's zone of influence within Eastern Idaho, Western Wyoming, and Northern Utah. The Great Basin Coordination Center often utilizes the Pocatello Airport as a location for prepositioning supplemental aircraft and crews supporting GACC/regional needs. The Pocatello Air Base is open seven days a week, with their core hours being from 0900 to 1800 hours, June thru October.

The CTNF operates two helibases, which are located at the Pocatello Airport and in Swan Valley, ID. These helibases can support other types and numbers of rotor wing aircraft. There is one Type III exclusive-use helicopter based at each of these locations during the fire season. Both Type III contracts begin June 20th and lasts for 100 days, ending the end of September. Both aircraft are staffed with ten-person helitack crews.

The Pocatello Helibase is also host to a Type 1 helicopter, which is supported and managed by the CTNF.

Retardant Dropping Operations – Sensitive Areas.

Aerial retardants are colored to provide high visibility from the air. Therefore, air tactical personnel, air tanker pilots, incident commanders, and fire personnel must exercise caution and weigh the benefits of the retardant when dropping in areas of high public visibility and congestion, or areas that are of historical or geological or archeological importance, or of otherwise sensitive nature (i.e., threatened and endangered species). Because of the potential harmful effects on aquatic life avoid dropping retardant within 300 feet of any waterway (lakes, rivers, streams, canals, and ponds, whether they are known to contain aquatic life). Dispatch personnel and/or the air attack base manager must attempt to identify known sensitive areas to aerial resources during the initial attack dispatch process.

Dispatch Daily Operations

Every day throughout the fire season, all the duty officers in the dispatch area will fill out an online status page to document the availability and location of their IA resources. Dispatch will use this document to status all available resources in the morning, this includes any off district assigned resources. [EIIFC Status Page Login](#)

It is your responsibility to notify dispatch as you change locations throughout the day. It will also be your responsibility to call out of service at the end of your duty day. Dispatch will read the weather over the radio twice a day at 1100 and 1630 on the BLM-Kinport, Caribou-Paris, and Targhee-Relay repeaters. This will include the indices and response levels, as well as available

resources. Dispatch will also read any Red Flag Warnings or Fire Weather Watches over the same repeaters.

IA Dispatch Procedures

Eastern Idaho Dispatch uses the closest forces concept when dispatching resources to smoke reports. All responses will be transmitted over the appropriate repeater to reach the resources being dispatched. A fire tone will first be transmitted, followed by a list of the resources being requested to respond as well as a general location of the smoke report. After this will be a short pause followed by specific location information and frequencies. Once this has been transmitted all responding resources will acknowledge the transmission and inform dispatch when they are en-route. (Dispatch will transmit a gazetteer page with the grid for that page along with the latitude and longitude. The gazetteer should be issued to you upon arrival for your assignment.)

Each initial attack is also assigned a number until a qualified IC arrives on scene and names the fire. These numbers start at 1 at the beginning of the day and will reset at the beginning of the next day. Upon arrival to the incident, please notify dispatch that you are on scene. If you are the first resource to arrive, please give a brief size up to dispatch. If you are going to be the Incident Commander, use the incident organizer provided to you to call in the full size up as soon as possible. Upon completion of the incident, please turn in your completed incident organizer along with an IC narrative to dispatch. All fires over 10 acres will be mapped and sent to collector.

Eastern Idaho Interagency Fire Organization and Contact Information

East Idaho Fire Organizations				
Title	Name	Office	Cell	Call Sign
East Idaho Interagency Fire Center				
East Idaho Interagency Fire Center		208-524-7600	208-524-7604 24hr Line	ID-EIC – East Idaho
Center Manager	Wilson, Richie	208-524-7615		
Caribou-Targhee National Forest - Supervisors Office				
Forest FMO	Johnston, Mike	208-557-5950	208-516-0399	Chief 1
Forest AFMO	Gibbons, Martell	208-557-5830	208-520-5685	Chief 2
Public Info Officer	Vacant	208-557-5765		
Forest Duty Officer		208-557-5953		
Caribou-Targhee National Forest – South Fork Zone				
Zone FMO	Johnston, Spencer	208-542-5815	208-317-7841	Division 4
AZFMO – Operations	Henrie, Jacob	208-542-5815	307-699-2542	Battalion Chief 41
AZFMO – Fuels	Baum, Ryan	208-354-6630	435-881-2144	Battalion Chief 42
Zone Prevention	Carnill, Jon		208-360-2170	Prevention 41

Caribou-Targhee National Forest – Swan Valley				
Captain	Milligan, Brian	208-483-1541	208-313-1541	Engine 641
Caribou-Targhee National Forest – Driggs				
Captain	Soper, Brendon	208-354-6616	208-313-7851	Engine 661
Fuels Supervisor	Danz, Tom		413-854-7713	Fuels Crew
Fuels Assistant	Bates, Michael		757-469-4104	Fuels Crew
Caribou-Targhee National Forest – Swan Valley Helitack				
Helicopter Manager	Miller, Nick		615-216-1587	Helicopter 7LH
Asst. Manager	Bolton, Bri		801-602-2553	Helicopter 7LH
Caribou-Targhee National Forest – Henrys Fork Zone				
Zone FMO	Hill, Jeff	208-652-1205	208-313-7830	Division 2
AZFMO – Operations	Ramstead, Matt	208-374-5422		Battalion Chief 21
AZFMO – Fuels	White, Jon	208-652-1202	307-250-1607	Battalion Chief 22
Zone Prevention	Melara, Josh		801-691-2529	Prevention 21
Caribou-Targhee National Forest – Dubois				
Captain	Moore, Gage	208-374-5422	605-517-0561	Engine 611
Captain	McConnell, Jon	208-374-5422	970-219-1935	Engine 612
Caribou-Targhee National Forest – Island Park				
Captain	Zweigart, Jarrod	208-558-4420	208-241-7301	Engine 621
Captain	Hawkins, Jeremy	208-558-4217	208-242-8941	Engine 622
Assistant Captain	Storrer, Josh	208-558-4223	208-731-8214	Engine 622
Crew Boss	Vacant 2023	208-558-4205		Centennial (T2IA)
Assistant Crew Boss	Vacant 2023	208-558-4212		Centennial (T2IA)
Caribou-Targhee National Forest – Ashton				
Captain	Parry, Brinton	208-652-1206	208-521-5173	Engine 623
Assistant Captain	James, Telford	208-558-4212	208-881-6220	Engine 623
Fuels Supervisor	Klein, Breck	208-652-1206	208-569-9108	
Fuels	Beck, Justin		208-220-3340	Masticator Operator
Caribou-Targhee National Forest – Bear River Zone				
Zone FMO	Alleman, Garth	208-847-8944	208-313-7823	Division 5
AZFMO – Operations	Phelps, Roo	208-847-8954	208-851-0937	Battalion Chief 51
AZFMO – Fuels	James, Adam	208-847-8953	218-256-1061	Battalion Chief 52
Zone Prevention	Boehme, Tana		208-317-7191	Prevention 51
Caribou-Targhee National Forest – Montpelier				
Captain	Henry, Garret	208-847-8946	435-764-5265	Engine 631 / Handcrew
Captain	Nielson, Austin	208-847-8934	208-540-2364	Engine 632

Assistant Captain	Beck, Joe		208-847-5378	Engine 632
Captain	Birch, Greg	208-847-8947	208-221-4705	Engine 651
Fuels Tech	Vacant			Fuels Crew
Fuels	Tolbert, Kevin		208-870-8325	Masticator Operator
Caribou-Targhee National Forest – Portneuf Zone				
Zone ZFMO	Bartel, Dan	208-236-7513	208-993-1751	Division 7
AZFMO – Operations	Bastian, Clint	208-236-7545	208-313-7828	Battalion Chief 71
AZFMO – Fuels	Contreras, Jose	208-236-7540	208-709-6612	Battalion Chief 72
Zone Prevention	Elzinga, Erin		616-834-1087	Prevention 71
Caribou-Targhee National Forest – Pocatello				
Helicopter Manager	Taylor, Travis	208-236-7509	208-241-0399	Helicopter 94H
Assistant Manager	Holdsambeck, Josh	208-236-7576	801-388-1759	Helicopter 94H
Assistant Manager	Wright, Laurel	208-236-7528	208-380-5808	Helicopter 94H
Captain	Smith, Jesse	208-236-7521	208-241-0650	Engine 671
Assistant Captain	Contreras, Lorenzo	208-236-7517	208-705-4426	Engine 671
Captain	Maughan, Derek	208-236-7508	208-339-3392	Engine 672
Assistant Captain	O'Brien, Matt	208-236-7527	406-212-7448	Engine 672
Fuels Supervisor	Pfeiffer, Logan	208-236-7514	208-766-3310	Fuels Crew
Caribou-Targhee National Forest – Malad				
Captain	Wangsgard, Kevin	208-766-2725	208-604-1161	Engine 673
Assistant Captain	McPheeters, Jamis	208-766-2725	801-648-5430	Engine 673
Idaho Falls District – Bureau of Land Management				
Idaho Falls BLM – District Office – Station 2				
FMO	Gosswiller, Joel	208-524-7601	208-709-2403	CH 3101
AFMO	Brouillette, Zac	208-524-7603	208-881-8895	DC 3102
Duty Officer			208-709-2401	
Cache Manager	Merrill, Blake	208-524-7609	208-270-4353	
Public Info Officer	Burger, Chris		208-709-2447	
FOS	Catlin, Austin	208-524-7657	208-709-2423	Battalion Chief 3111
Safety Specialist	Vacant 2023	208-524-7611		
Captain	Toy, Darin	208-524-7637	208-709-2421	Engine 3421

Asst. Captain	Rose, Mathew		208-709-2444	Engine 3421
Captain	Craig, Jeremy	208-524-7644	208-541-3626	Engine 3422 (Location Menan)
Idaho Falls BLM – Dubois – Station 1				
Captain	Bradley, Taylor	208-524-7681	208-709-2428 208-351-8200	Engine 3411
Idaho Falls BLM – Atomic City – Station 3				
Captain	Ware, Andrew	208-524-7636	302-383-3657	Engine 3431
Idaho Falls BLM – Blackfoot – Station 4				
Captain	Kunkel, Farron	208-524-7683	208-709-2431	Engine 3441
Idaho Falls BLM – Pocatello – Station 5				
FOS	Labrum, Thaddeus	208-709-2463	208-236-7564	Battalion Chief 3110
FOS	O'Donnell, Brian	208-478-6381	208-709-2430	Battalion Chief 3113
Captain	Davis, Paul	208-236-7564	208-709-2462	Engine 3451
Captain	Sunderland, Brandon		208-406-2275	Engine 3452
Idaho Falls BLM – American Falls – Station 6				
Captain	Fearn, Mickey	208-478-6397	208-569-5660	Engine 3461
Captain	Degarmo, Trevor	208-478-6387	503-569-0379	Engine 3462
Idaho Falls BLM – Soda Springs – Station 7				
Captain	Vacant 2023	208-478-6384		Engine 3471
Idaho Falls BLM – Malad – Station 8				
Captain	Unstaffed		208-709-2448	Engine 3481
Captain	Christopherson, Wade	208-766-5916	208-709-2451	Engine 3482
Idaho Falls BLM – Salmon – Station 9				
AFMO	Petray, Doug	208-756-5134	208-940-0399	DV 3103 (CIC)
Captain	Karn, James	208-756-5197	208-768-7631	Engine 3495 (CIC)
Captain	Vacant 2023	208-756-5419		Engine 3694 (CIC)
Central Idaho Interagency Fire Center		208-756-7157	208-303-8103 24hr	ID-CIC

East Idaho Interagency Dispatch Electronic Maps and Documents



https://ftp.wildfire.gov/public/incident_specific_data/great_basin/local_unit_map/ID_EIC/