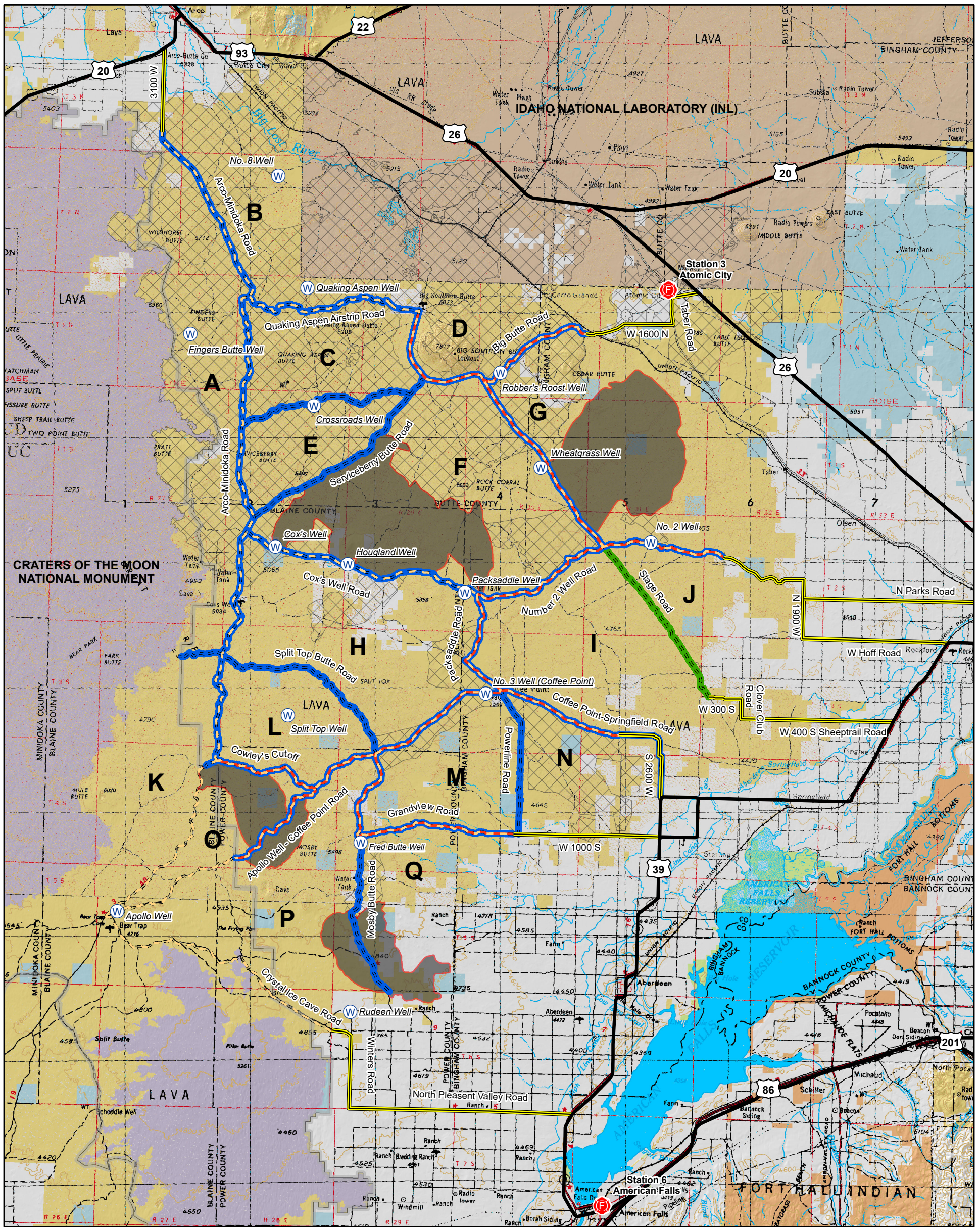




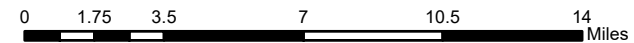
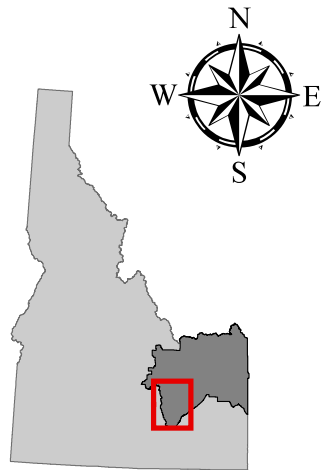
Big Desert Fuel Breaks and Zones



Legend

- BLM Fire Guard Stations
- Active Wells
- Major Highways
- Big Desert Access Roads
- Graveled / Cindered Roads
- Treatment Roads
- Roto-Mowed, Completed - 300' width
- Chemical
- Big Desert 5 Year Fire History
- Remaining Intact Habitat

- Craters of the Moon Nat. Mon.
- Surface Management Agency**
- Bureau of Land Management
- Bureau of Reclamation
- Dept of Energy
- Indian Reservation
- National Park Service
- Private
- State



Well Name	Contact
Apollo Well	Henery Etcheverry 208-431-5207 or Mike Smith 208-431-0997
Cox's Well	Mike Seal 208-940-2020
Crossroads Well	Jay Jensen (H) 208-554-2093 (C) 208-390-2093
Fingers Butte Well	Soren Pierce 208-221-6083
Fred Butte Well	Henery Etcheverry 208-431-5207 or Mike Smith 208-431-0997
Houghland Well	John Houghland 208-328-2245
No. 2 Well	Shaun Ellis 208-574-4936 or Jennifer Ellis 208-681-6004
No. 3 Well (Coffee Point)	Henery Etcheverry 208-431-5207 or Mike Smith 208-431-0997
No. 8 Well	Jay Jensen (H) 208-554-2093 (C) 208-390-2093
Packsaddle Well	Sam Chandler 208-680-3552
Quaking Aspen Well	Jay Jensen (H) 208-554-2093 (C) 208-390-2093
Robber's Roost Well	Fnrud Hill 208-684-5352
Rudeen Well	Kent Rudeen 208-226-5591
Split Top Well	Henery Etcheverry 208-431-5207 or Mike Smith 208-431-0997
Wheatgrass Well	Karl Loveland 208-237-1632

No warranty is made by the Bureau of Land Management (BLM). The accuracy, reliability, or completeness of these data for individual use or aggregate use with other data is not guaranteed. The following cannot be made Section 508 compliant. For help with its data or information, please contact the BLM Idaho State Office Webmaster at 208-373-4000.