

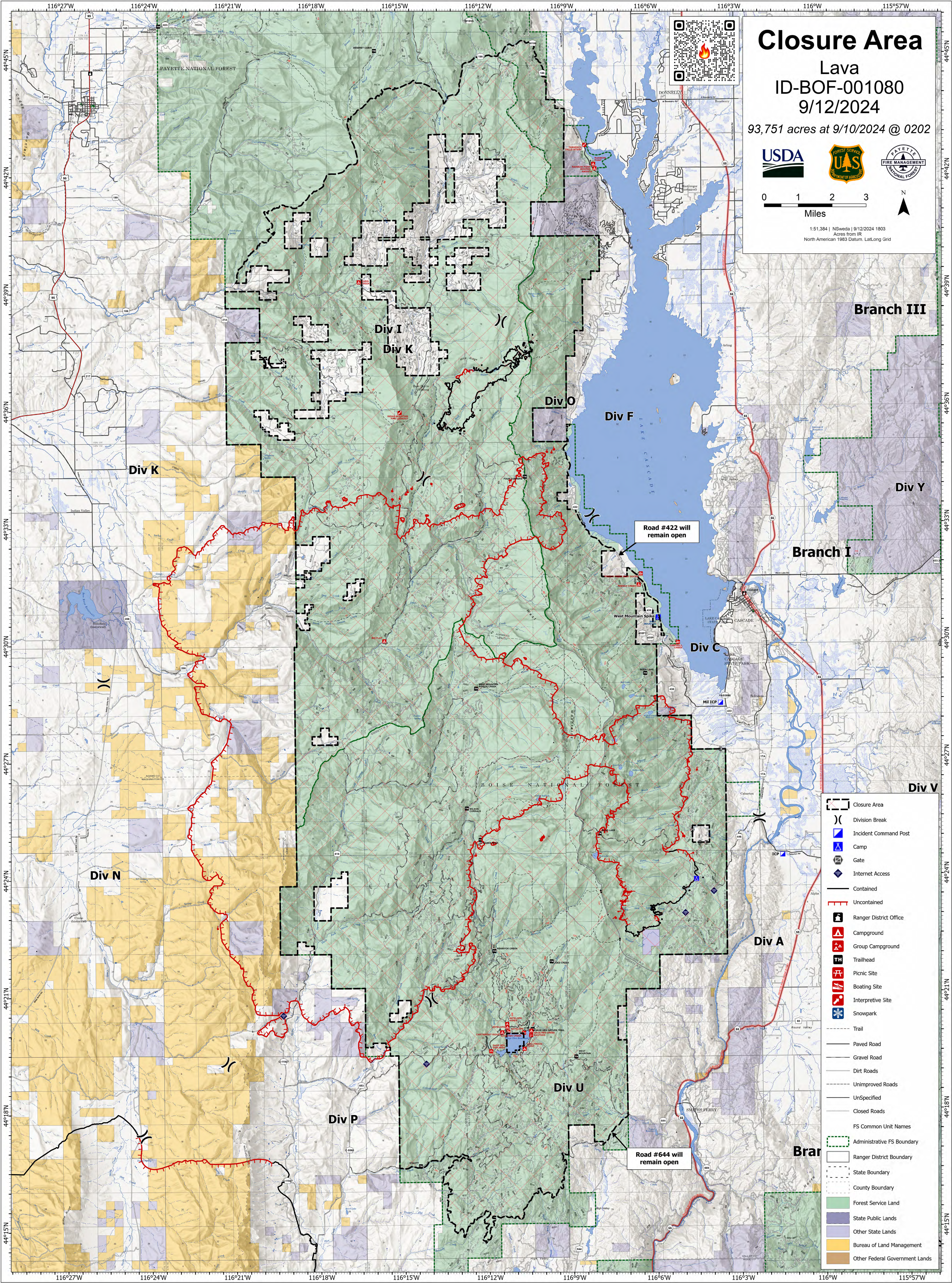
# Closure Area

Lava  
ID-BOF-001080  
9/12/2024

93,751 acres at 9/10/2024 @ 0202



1:51,384 | NSweda | 9/12/2024 1803  
Acres from IR  
North American 1983 Datum, Lat-Long Grid



Road #422 will remain open

Road #644 will remain open

- Closure Area
- Division Break
- Incident Command Post
- Camp
- Gate
- Internet Access
- Contained
- Uncontained
- Ranger District Office
- Campground
- Group Campground
- Trailhead
- Picnic Site
- Boating Site
- Interpretive Site
- Snowpark
- Trail
- Paved Road
- Gravel Road
- Dirt Roads
- Unimproved Roads
- UnSpecified
- Closed Roads
- FS Common Unit Names
- Administrative FS Boundary
- Ranger District Boundary
- State Boundary
- County Boundary
- Forest Service Land
- State Public Lands
- Other State Lands
- Bureau of Land Management
- Other Federal Government Lands