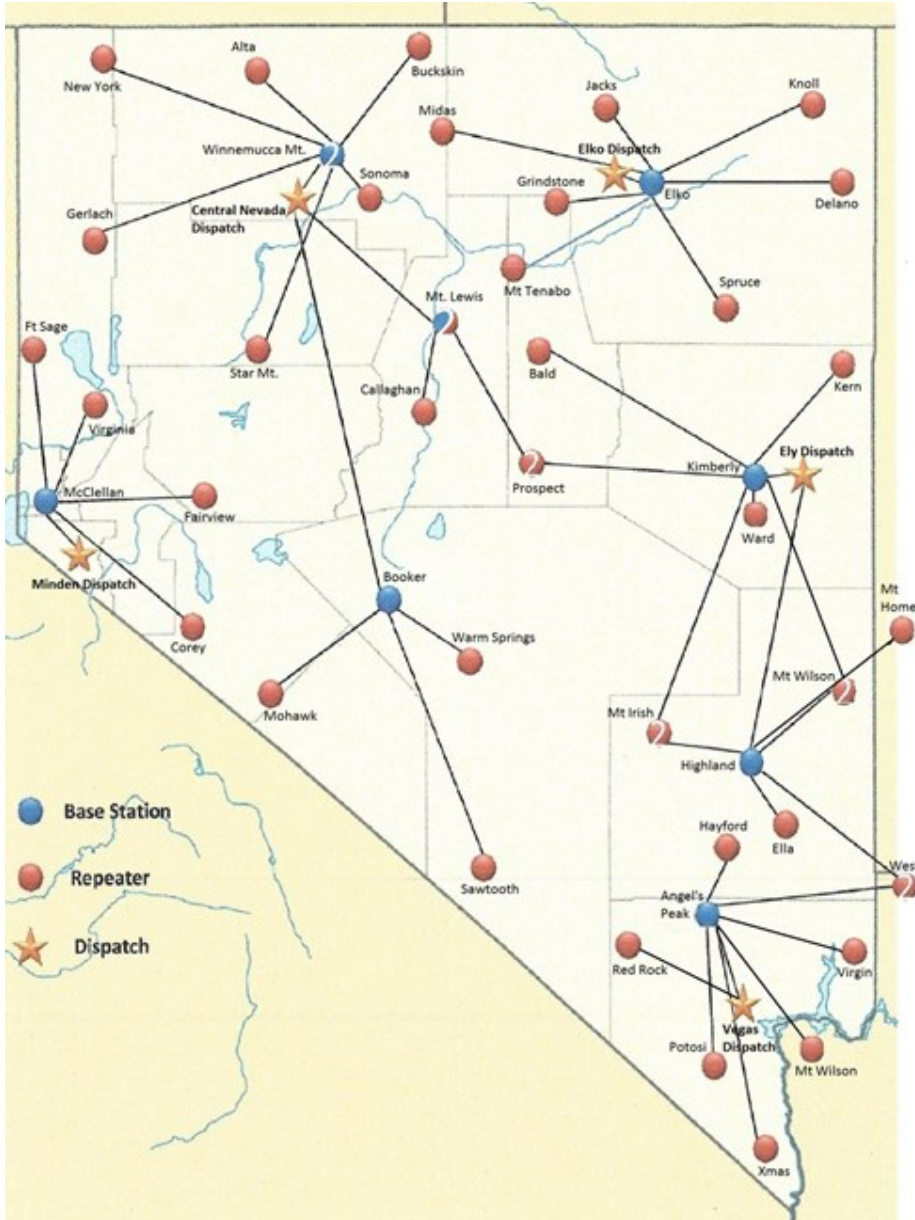


2021 Ely District Radio Frequency Guide, Repeater Maps and communications information



01 Apr 2021



Radio Priorities

All radio use will utilize proper radio etiquette and will be guided by the following radio priorities:

*First priority is messages concerning
Life or death or any other
extreme emergency situations

*Second priority is aircraft
communication and flight following

*Third priority is messages concerning
reports to a new fire that has not
been reported

*Fourth priority is dispatching personnel
to a new fire or ordering additional
resources for an escaped fire

*Fifth priority is other suppression
messages such as ordering food,
equipment and supplies

Last priority is administrative or
non-fire communication

Kenwood Mobile

Point of Contacts

Left Up	Volume Up
Left Down	Volume Down
Triangle	Squelch Level
Menu	Scan Delete/Add
Back	Scan
Left	Zone Down
Right/Home	Zone Up
Square	Squelch Off Momentary
Right Up	Channel Up
Right Down	Channel Down



Dispatch 775-289-1925
EICC@BLM.GOV

Dispatch On Call Cell 775-289-9395

On Duty Officer 775-289-1984

If power is out in Ely, the following two numbers will still work.

Dispatch 775-289-2064
775-289-8466

Ely District Office 775-289-1800

Caliente Office 775-726-8100

Pony Springs Office 775-724-3181

Ely District AFMO
Ray Maestes Cell 775-296-0374

Ely Fire FOS
Jon Holmes Cell 775-296-2201

Caliente FOS
Kip Goff Cell 775-293-3970

Pony Springs FOS
Robert Washburn Cell 775-293-3882

Telecommunications Specialist
Ryan Macklin Cell 775-293-2838

Ely Law Enforcement

Caliente Law Enforcement
Bill Hart 775-293-2683

Zone	Chan 1	Chan 2	Chan 3	Chan 4	Chan 5	Chan 6	Chan 7
1	Elko Local	BLM Knoll	BLM Spruce	BLM Jacks	BLM Tenabo	BLM Delano	BLM Midas
Elko	RX 171.5375	RX 171.5375	RX 171.5375	RX 171.5375	RX 171.5375	RX 171.5375	RX 171.5375
BLM	RX-CG 110.9	RX-CG 110.9	RX-CG 110.9	RX-CG 110.9	RX-CG 110.9	RX-CG 110.9	RX-CG 110.9
	TX 171.5375	TX 163.5750	TX 163.5750	TX 163.5750	TX 163.5750	TX 163.5750	TX 163.5750
	TX-CG 110.9	TX-CG 110.9	TX-CG 123.0	TX-CG 131.8	TX-CG 136.5	TX-CG 146.2	TX-CG 156.7
2	WD RPTR	FS RPTR	WD RPTR	WD RPTR	WD RPTR	WD RPTR	WD RPTR
Winnemucca	WMCA MT	BUCKSKIN	ALTA	GERLACH	STAR	GOOSEY	NEW YORK
BLM	RX 172.5750	RX 170.5250	RX 173.8250	RX 173.8250	RX 172.5750	RX 172.5750	RX 172.5750
	RX-CG 103.5	♦	RX-CG 103.5	RX-CG 103.5	RX-CG 103.5	RX-CG 103.5	RX-CG 103.5
	TX 164.7250	TX 164.1875	TX 166.2375	TX 166.2375	TX 164.7250	TX 164.7250	TX 164.7250
NV-WID-020	TX-CG 103.5	TX-CG 110.9	TX-CG 151.4	TX-CG 173.8	TX-CG 131.8	TX-CG 123.0	TX-CG 114.8
3	CC BLM	CC RPTR	CC RPTR	CC RPTR	CC RPTR	CC RPTR	NDF
Carson City	Local	Fairview	Corey Pk	Ft Sage	McClellan	Virginia Pk	Eagle
BLM	RX 169.9875	RX 169.9875	RX 169.9875	RX 169.9875	RX 169.9875	RX 169.9875	RX 158.8950
	RX-CG 146.2	RX-CG 146.2	RX-CG 146.2	RX-CG 146.2	RX-CG 146.2	RX-CG 146.2	♦
	TX 169.9875	TX 162.2375	TX 162.2375	TX 162.2375	TX 162.2375	TX 162.2375	TX 156.0750
	TX-CG 146.2	TX-CG 114.8	TX-CG 151.4	TX-CG 173.8	TX-CG 186.2	TX-CG 203.5	TX-CG 146.2
4	ELY N	BALD	N. IRISH	PROSPECT	KERNS	WARD	ELY S
Ely	RX 169.7750	RX 169.7750	RX 169.7750	RX 169.7750	RX 169.7750	RX 169.7750	RX 170.0250
BLM	RX-CG 123.0	RX-CG 123.0	RX-CG 123.0	RX-CG 123.0	RX-CG 123.0	RX-CG 123.0	RX-CG 123.0
	TX 169.7750	TX 162.1625	TX 162.1625	TX 162.1625	TX 162.1625	TX 162.1625	TX 170.0250
NV-040	TX-CG 123.0	TX-CG 110.9	TX-CG 123.0	TX-CG 131.8	TX-CG 136.5	TX-CG 146.2	TX-CG 123.0
5	Local	Hayford	Virgin	Xmas	Potosi	Wilson AZ	West Mtn
Las Vegas	RX 173.0500	RX 173.0500	RX 173.0500	RX 173.0500	RX 173.0500	RX 173.0500	RX 173.0500
BLM	RX-CG 114.8	RX-CG 114.8	RX-CG 114.8	RX-CG 114.8	RX-CG 114.8	RX-CG 114.8	RX-CG 114.8
	TX 173.0500	TX 164.4750	TX 164.4750	TX 164.4750	TX 164.4750	TX 164.4750	TX 164.4750
	TX-CG 114.8	TX-CG 110.9	TX-CG 123.0	TX-CG 131.8	TX-CG 136.5	TX-CG 146.2	TX-CG 156.7
6	BM RPTR	BM RPTR	BM RPTR	BM BASE	BM RPTR	BM RPTR	BM RPTR
Battle Mountain	LEWIS	PROSPECT	CALAGHAN	BOOKER	WARM SP	MOHAWK	SAWTOOTH
	RX 171.7250	RX 172.6500	RX 171.7250	RX 171.7250	RX 171.7250	RX 171.7250	RX 171.7250
BLM	RX-CG 110.9	RX-CG 110.9	RX-CG 110.9	RX-CG 100.0	RX-CG 100.0	RX-CG 100.0	RX-CG 100.0
	TX 164.8375	TX 164.4250	TX 164.8375	TX 171.7250	TX 164.8375	TX 164.8375	TX 164.8375
	TX-CG 107.2	TX-CG 136.5	TX-CG 110.9	TX-CG 100.0	TX-CG 123.0	TX-CG 131.8	TX-CG 146.2

NIRSC MIDLAND POCKET CARD

1. Select the group and channel that is needed to be programmed. *(See Changing Zones)*
2. Programming a Channel **(ANALOG ONLY)**
 - Select "Menu" softkey, scroll up/down to "Channel Parameters" and press the "Select" softkey
 - Scroll up/down to "Channel" and press the "Select" softkey.
 - Enter a 5-Digit password and press "OK". *(NIRSC Radio Password is "00000")*
 - Scroll up/down to desired channel and press the "Select" softkey to enter channel parameters.

Channel Parameters:

- Channel Mode: Press "Edit" and scroll up/down to select "Analog" and press "OK".
- RX Freq: Press "Edit", then press "C/C" several times to clear and enter a new RX Frequency and press "OK" when done.
- TX Freq: Press "Edit", then press "C/C" several times to clear and enter a new TX Frequency and press "OK" when done.
- TX Power: Press "Edit" and scroll up/down to select either **Low, Medium, or High** and press "OK".
- Channel Name: Press "Edit", then press "C/C" several times to clear and enter new name via the alphanumeric keypad and press "OK" when done.
- TX Timeout: Press "Edit" and scroll up/down to select "Yes" and press "OK". *(Default=120 Sec)*
- RX Tone Type: Press "Edit" and scroll up/down to select "CCS" and press "OK".
- RX Tone: Press "Edit" and scroll up/down to select desired tone from list or select "NONE" and press "OK" when done.
- TX Tone Type: Press "Edit" and scroll up/down to select "CCS" and press "OK".
- TX Tone: Press "Edit" and scroll up/down to select desired tone from list or select "NONE" and press "OK" when done.
- Channel Spacing: Press "Edit" and scroll up/down to select "12.5Khz or 15Khz" and press "OK".
- ANI Type: Press "Edit" and scroll up/down to select either "None, 5-Tone, DTMF" and press "OK".
- Selcall Type: Press "Edit" and scroll up/down to select "None" and press "OK".

Once all parameters are entered, press the "Exit" key. Press "Yes" when display shows "Save Changes Permanently?".

Troubleshooting

- If the radio is not powering up at all;
 - Dead batteries, Bad, broken, or loose wires
 - Vehicle radios have a fuse near the dash fuse box—look for a wire attached to a fuse. If you don't find one, it may be in the fuse box under the hood.

- Radio not transmitting at all;
 - Bad or dying batteries, loose
 - Cross threaded or missing antenna
 - Are you on a receive only channel (e.g. weather)?
 - Attempt to access a repeater (key up and release)
 - "Squelch tail" sound will verify that you are putting out a signal. N Ely and S Ely will not give a squelch tail.
 - Move to higher ground
 - Unfortunately, there are some channels that can't be used in some places.
 - Try a different repeater

- Report the problem to the Radio Shop even if you fix it.



NIRSC RELM KING DPH/DPHx POCKET CARD

- Select the group and channel that is needed to be programmed.**
Select a group by pressing the "F" key followed by a 2-digit group and press the "ENT" key.
- Program Access**
 - Insert programming plug into radio side connector.
 - Press and hold the master switch on plug.
 - While pressing the master switch, press and hold the "FCN" key for about 3secs.
LCD should display "-- --ID". (**NIRSC radio password is "000000"**)
 - Enter the **SIX-DIGIT** password and press the "ENT" key to enter program mode.
If the correct password was entered, the LCD will display "PRG CH 00".
- Programming a Channel (ANALOG ONLY)**
From the "PRG CH00" screen, press a desired 2-digit channel number to program via the keypad.
 - "PRG CH 01".....Channel 01 Settings is currently selected.
 - "PRG CH 01M" Press # to toggle between Narrow/Wide Band and press the "FCN" key.
 - "PRG RX 170.47500" Press "CLR" and enter new valid "RX Frequency" and press the "ENT" key.
 - "PRG RX MODE-A" Change RX Mode with "PRI" key to "A" for Analog and press the "ENT" key.
 - "PRG RX CG 000.0" Press "CLR" and enter new "RX Code Guard" and press "ENT" key.
 - "PRG RX IDCG NAC0659" RX NAC, DIGITAL ONLY, press the "ENT" key to skip to next field.
 - "PRG RX ID SQL-NRM" Change "Squelch" with "PRI" key to "NRM" and press the "ENT" key.
 - "PRG TX 170.47500" Press "CLR" and enter new valid "TX Frequency" and press the "ENT" key.
 - "PRG TX MODE-A" Change TX Mode with "PRI" key to "A" for Analog and press the "ENT" key.
 - "PRG TX CG 103.5" Press "CLR" and enter new "TX Code Guard" and press the "ENT" key.
 - "PRG TX IDCG NAC0659" TX NAC, DIGITAL ONLY, press the "ENT" key to skip to next field.
 - "PRG ID TG00001" Talk Group ID, DIGITAL ONLY, press the "ENT" key to skip to next field.
 - "PRG CHAN 1".....Channel Label, press "ENT" to bring up the first programming field ("PRG CH01M").
- Channel Programming is complete.** At this point the user may select another channel to program or exit the program mode by cycling power to the radio.

DPH SETTINGS & OPTIONS

ADD Channel to Scan List

Select a desired CH and press the "ENT" key.
"SCN" will appear in upper display.

DELETE Channel from Scan List

Select a desired CH and press the "CLR" key.
"SCN" will be removed from the upper display.

Note: Scan must be disabled to add/delete CH's from scan list.

ADD PRI Scan Channel

Select CH, Press "PRI" key, PRI will appear in display.

Priority Mode B, C or D must be enabled to change PRI Channel via the keypad.

HI/LOW Power Selection

LOW Power: Toggle the LO/Hi Switch to the up position. (*Towards the back of the radio*)

HI Power: Toggling the LO/Hi Switch to the down position. (*Towards the front of the radio*)

TX User Selectable Tones.

NIRSC Radios TX User Tones are Disabled.

Disable/Enable Keypad

To Disable: press and hold "FCN" key.

To Enable: press and hold "FCN" key.

NIRSC DPH CH 00 Program Guide

- "P000000".....Group Password Assignment
- "0000000".....Group ANI/DTMF ID
- "120 SEC".....Transmit Time-Out Timer
- "2.0SEC".....Scan Delay Time
- "PR1 OFF".....Priority 1 Channel Assignment
- "PR2 OFF".....Priority 2 Channel Assignment

Group 1: (NIRSC Default is 1-12345)

- Battery Saver Disabled.....1-12345
- Group Scan.....1-12345
- TX ON PRI 1.....1-12345
- Priority Key Lockout.....1-12345
- Scan List Lockout.....1-12345

Group 2: (NIRSC Default is 2-12345)

- User Code Guard Enabled.....2-12345
- Busy Channel Indicator Enabled.....2-12345
- Busy Channel Lockout Enabled.....2-12345
- Busy Channel Lockout/Override.....2-12345
- ANI Enabled.....2-12345
- Manual DTMF Encoder.....2-12345
- Manual DTMF/ANI Encoder.....2-12345

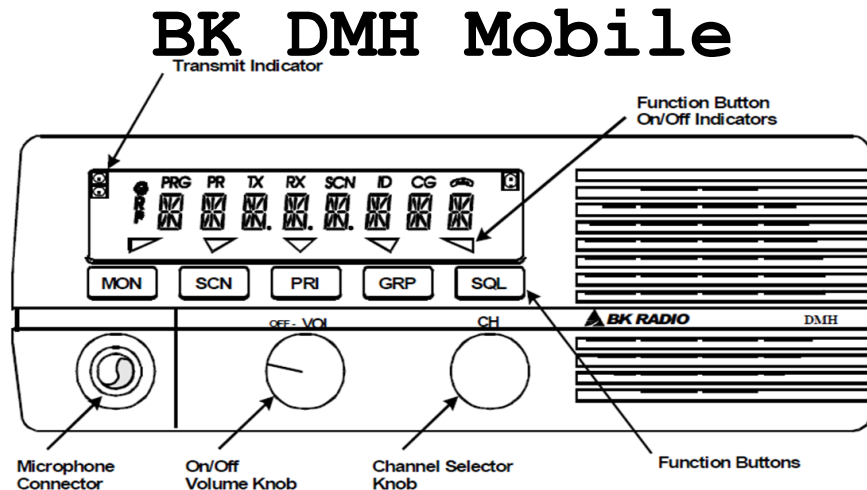
Group 3: (NIRSC Default is 3-12345)

- Reserved.....3-12345
- Reserved.....3-12345
- LCD Backlight ON Display Change.....3-12345
- LCD Backlight ON Key Press.....3-12345
- Alphanumeric Mode Enabled.....3-12345
- "LITE OFF".....Back Light Duration
- "GROUP XX".....Group Label

Bold= Flashing

Chan 8	Chan 9	Chan 10	Chan 11	Chan 12	Chan 13	Chan 14	Chan 15	Chan 16
BLM Swales	NDF Local	NDF Red	NDF Red 2	Gov	Gov	P A/G49	S A/G08	BLM SOA
				Comm 1	Comm 2			
RX 171.5375	RX 158.8950	RX 159.3450	RX 158.8650	RX 163.1000	RX 168.3500	RX 168.0375	RX 166.8750	RX 171.6750
RX-CG 110.9	♦	♦	♦	♦	♦	♦	♦	RX-CG 114.8
TX 163.5750	TX 158.8950	TX 159.3450	TX 158.8650	TX 163.1000	TX 168.3500	TX 168.0375	TX 166.8750	TX 171.6750
TX-CG 103.5	TX-CG 131.8	♦	♦	♦	♦	♦	♦	TX-CG 114.8
WD RPTR	WD RPTR	MAGGIE	USFS	Gov	Gov	Wmca	Wmca/Ely	BLM SOA
SONOMA	FOX	NDF	HINKEY	Comm 1	Comm 2	P A/G53	S A/G06	
RX 173.8250	RX 172.5750	RX 158.8950	RX 170.5250	RX 163.1000	RX 168.3500	RX 168.4875	RX 166.8000	RX 171.6750
RX-CG 103.5	♦	♦	♦	♦	♦	♦	♦	RX-CG 114.8
TX 166.2375	TX 164.7250	TX 156.0750	TX 164.1875	TX 163.1000	TX 168.3500	TX 168.4875	TX 166.8000	TX 171.6750
TX-CG 110.9	TX-CG 103.5	TX-CG 103.5	TX-CG 123.0	♦	♦	♦	♦	TX-CG 114.8
NV BLM	GOV	GOV	BLM	BLM	BLM	SIERRA FRT	SIERRA FRT	BLM SOA
SOA RPTR	COMM 1	COMM 2	NV TAC1	NV TAC2	NV TAC3	P A/G51	S A/G08	
RX 171.6750	RX 163.1000	RX 168.3500	RX 169.4375	RX 164.4750	RX 172.7500	RX 168.3125	RX 166.8750	RX 171.6750
RX-CG 114.8	♦	♦	NAC \$47C	RX-CG 114.8	RX-CG 114.8	♦	♦	RX-CG 114.8
TX 168.2250	TX 163.1000	TX 168.3500	TX 169.4375	TX 164.4750	TX 172.7500	TX 168.3125	TX 166.8750	TX 171.6750
TX-CG 100.0	♦	♦	NAC \$47C	TX-CG 114.8	TX-CG 114.8	♦	♦	TX-CG 114.8
ELLA	S. WILSON	S. IRISH	West Mt	MT HOME	ELY EXT	P A/G43	S A/G06	BLM SOA
RX 170.0250	RX 170.0250	RX 170.0250	RX 170.0250	RX 170.025	RX 168.2250	RX 167.6000	RX 166.8000	RX 171.6750
RX-CG 123.0	RX-CG 123.0	RX-CG 123.0	RX-CG 123.0	RX-CG 123.0	RX-CG 110.9	♦	♦	RX-CG 114.8
TX 166.3750	TX 166.3750	TX 166.3750	TX 166.3750	TX 166.3750	TX 168.2250	TX 167.6000	TX 166.8000	TX 171.6750
TX-CG 110.9	TX-CG 123.0	TX-CG 131.8	TX-CG 136.5	TX-CG 146.2	TX-CG 110.9	♦	♦	TX-CG 114.8
Split Ridge	Redrock	FS ANGEL	FS CHARLS	FS POTOSI	REDROC AD	P A/G23	S A/G08	BLM SOA
RX 173.0500	RX 172.5250	RX 172.2750	RX 172.2750	RX 172.2750	RX 171.7000	TX 166.7625	TX 166.8750	RX 171.6750
RX-CG 114.8	RX-CG 114.8	♦	♦	♦	RX-CG 114.8	♦	♦	RX-CG 114.8
TX 164.4750	TX 166.2375	TX 164.5000	TX 164.5000	TX 164.5000	TX 162.2250	TX 166.7625	TX 166.8750	TX 171.6750
TX-CG 167.9	TX-CG 114.8	TX-CG 146.2	TX-CG 156.7	TX-CG 123.0	TX-CG 114.8	♦	♦	TX-CG 114.8
FS RPT	FS RPT	FS RPT	FS RPT	FS RPT	FS RPT	BTL MTN	BTL MTN	BLM SOA
BALD	AUSTIN	BROCK	BUNKER	JEFFERSON	MAHOGONY	P A/G15	S A/G02	
RX 173.7750	RX 173.7750	RX 173.7750	RX 173.7750	RX 173.7750	RX 173.7750	RX 167.5250	RX 166.6375	RX 171.6750
♦	♦	♦	♦	♦	♦	♦	♦	RX-CG 114.8
TX 165.7500	TX 165.7500	TX 165.7500	TX 165.7500	TX 165.7500	TX 165.7500	TX 167.5250	TX 166.6375	TX 171.6750
TX-CG 127.3	TX-CG 141.3	TX-CG 136.5	TX-CG 156.7	TX-CG 167.9	TX-CG 114.8	♦	♦	TX-CG 114.8

Zone	Chan 1	Chan 2	Chan 3	Chan 4	Chan 5	Chan 6	Chan 7
7 NDF	NDF MAIN	NDF CAVE	NDF KIMBERLY	NDF ALAMO	NDF HIGHLAND	NDF ELLA	NDF MCGILL
	RX 158.8950	RX 158.8950	RX 158.8950	RX 158.8950	RX 158.8950	RX 158.8950	RX 158.8950
	♦	♦	♦	♦	♦	♦	♦
	TX 158.8950	TX 153.8750	TX 153.8750	TX 151.1900	TX 151.1900	TX 151.1900	TX 159.4500
	♦	TX-CG 110.9	TX-CG 136.5	TX-CG 131.8	TX-CG 123.0	TX-CG 136.5	TX-CG 136.5
8 CO-OP 2	HNF LOCAL	HNF BUCKSKIN	HNF MERRITT	HNF CAVE	HNF SPRUCE	HNF JOHNS HILL	HNF HAMILTON
	RX 169.9000	RX 170.5250	RX 169.9000	RX 169.9000	RX 169.9000	RX 169.9000	RX 169.9000
	RX-CG 162.2	♦	♦	RX-CG 162.2	♦	♦	RX-CG 162.2
	TX 169.9000	TX 164.1875	TX 164.1375	TX 164.1375	TX 164.1375	TX 164.1375	TX 164.1375
	♦	TX-CG 110.9	TX-CG 123.0	TX-CG 156.7	TX-CG 136.5	TX-CG 146.2	TX-CG 103.5
9 CO-OP 3	TNF LOCAL	TNF MAHOGONY	TNF JEFFERSON	TNF FS BALD	TNF FS AUSTIN	TNF FS BROCK	TNF BUNKER
	RX 169.8750	RX 173.7750	RX 173.7750	RX 173.7750	RX 173.7750	RX 173.7750	RX 173.7750
	♦	♦	♦	♦	♦	♦	♦
	TX 169.8750	TX 165.7500	TX 165.7500	TX 165.7500	TX 165.7500	TX 165.7500	TX 165.7500
	♦	TX-CG 114.8	TX-CG 167.9	TX-CG 127.3	TX-CG 141.3	TX-CG 136.5	TX-CG 156.7
10 ELY FIRE	ELY N	ELY S	NDF RED	BLM SOA 2	NV EMS TAC 1	LC MUTUAL AID	GOV COMM 1
	RX 169.7750	RX 170.0250	RX 159.3450	RX 168.2250	RX 154.2800	RX 155.1450	RX 163.1000
	RX-CG 123.0	RX-CG 123.0	♦	♦	♦	♦	♦
	TX 169.7750	TX 170.0250	TX 159.3450	TX 168.2250	TX 154.2800	TX 155.1450	TX 163.1000
	♦	♦	♦	♦	♦	♦	
11 NORTH	BLM ELY N	BLM BALD	BLM N. WILSON	BLM N. IRISH	BLM PROSPECT	BLM KERNS	BLM WARD
	RX 169.7750	RX 169.7750	RX 169.7750	RX 169.7750	RX 169.7750	RX 169.7750	RX 169.7750
	RX-CG 123.0	RX-CG 123.0	RX-CG 123.0	RX-CG 123.0	RX-CG 123.0	RX-CG 123.0	RX-CG 123.0
	TX 169.7750	TX 162.1625	TX 162.1625	TX 162.1625	TX 162.1625	TX 162.1625	TX 162.1625
	♦	TX-CG 151.4	TX-CG 123.0	TX-CG 131.8	TX-CG 136.5	TX-CG 146.2	
12 SOUTH	BLM ELY S	BLM ELLA	BLM S. WILSON	BLM S. IRISH	BLM West Mt	MT HOME	ST GEORGE
	RX 170.0250	RX 170.0250	RX 170.0250	RX 170.0250	RX 170.0250	RX 170.0250	RX 168.4250
	RX-CG 123.0	RX-CG 123.0	RX-CG 123.0	RX-CG 123.0	RX-CG 123.0	RX-CG 123.0	♦
	TX 170.0250	TX 166.3750	TX 166.3750	TX 166.3750	TX 166.3750	TX 166.3750	TX 168.4250
	♦	TX-CG 123.0	TX-CG 131.8	TX-CG 136.5	TX-CG 146.2	♦	



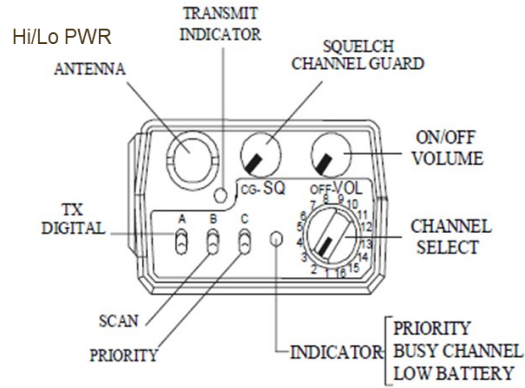
Press the "GRP" function button, rotate channel knob to the correct group and then press "GRP" again to switch to the new group. Ensure Scan is off ("SCN" Not flashing), then press and hold "SCN" to add and remove the selected channel from the scan list.

Cloning

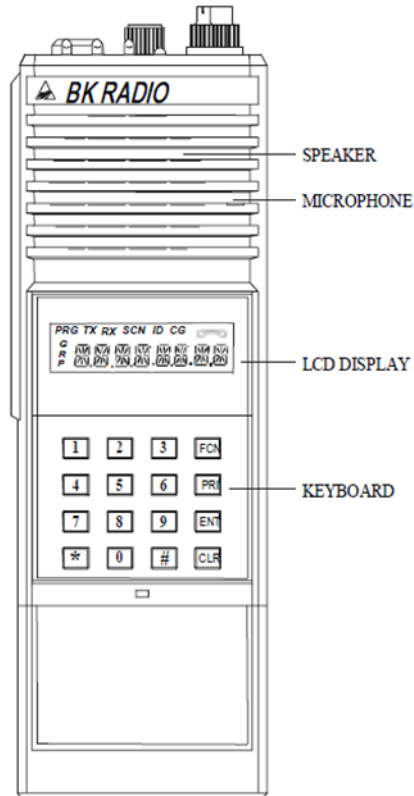
1. Attach the master switch end (Push Button) of the cloning cable to the side connector of the Master radio.
2. Select the group to be cloned from the Master radio.
3. Put the Master radio in Programming Mode by pressing and holding the master switch then pressing and holding the [FCN] key until the display shows '- - - ID.' Enter the password of the selected group. The display shows 'PRG CH 00.'
4. Review the values programmed in the radio by pressing the [FCN] or [ENT] key at each CHXX prompt. Any required changes must be made now.
5. Connect the other plug of the cable to the side connector of the radio you want to clone.
6. Turn on the clone and set it to the desired channel group.
7. Press the [*] key on the Master radio keypad. The display will flash "PROG" signifying that the radio is ready to download its program to the clone.
8. Press the [FCN] key on the Master radio keypad. The display will flash 'CLONE' while information from the master is downloaded to the clone.
9. If successful, the display on the master will resume flashing 'PROG.' • To clone another channel group, turn off both radios and go back to Step 3, changing the channel group as required.
10. If cloning was not successful, the master will display 'FAIL' and multiple beeps will follow. Failures can be due to, improper connection, failure to turn on the clone, setting the clone in Programming Mode, group 'locked' by PC Programming.

NOTE: To stop the 'FAIL' Mode, press [CLR], turn off both radios, and try again, starting with Step 1 on the previous page.

BK DPH Portable



Pressing "ENT" on the selected channel will add it to the scan list.
 Pressing "CLR" on the selected channel will remove it from the scan list.
 Pressing "#, group/zone number, then ENT" will allow you to change groups.



Chan 8	Chan 9	Chan 10	Chan 11	Chan 12	Chan 13	Chan 14	Chan 15	Chan 16
NDF KING TOP RX 158.8950 ♦ TX 153.8750 TX-CG 123.0	NDF CURRANT RX 158.8950 ♦ TX 153.8750 TX-CG 146.2	NDF RED 1 RX 159.3450 ♦ TX 159.3450 ♦	ST GEORGE RX 168.4250 ♦ TX 168.4250 ♦	ST GEORGE REPEATER RX 168.4250 ♦ TX 169.3750 ♦	CEDAR CITY LOCAL RX 164.6250 ♦ TX 164.6250 ♦	CEDAR CITY REPEATER RX 164.6250 ♦ TX 168.4750 ♦	CEDAR CITY PRI A/G RX 168.6375 ♦ TX 168.6375 ♦	CEDARCITY SEC A/G RX 168.1250 ♦ TX 168.1250 ♦
HNF WORTHINGT RX 169.9000 RX-CG 162.2 TX 164.1375 TX-CG 167.9	HNF BALD RX 173.7750 ♦ TX 165.7500 TX-CG 127.3	GOV COMM 1 RX 163.1000 ♦ TX 163.1000 ♦	GOV COMM 2 RX 168.3500 ♦ TX 168.3500 ♦	NV EMS 1 VFIRE 21 RX 154.2800 ♦ TX 154.2800 ♦	NV EMS 2 VFIRE 22 RX 154.2650 ♦ TX 154.2650 ♦	NV EMS 3 VFIRE 23 RX 154.2950 ♦ TX 154.2950 ♦	USF&W RX 164.6250 ♦ TX 164.6250 ♦	NATIONAL AIR GUARD RX 168.6250 ♦ TX 168.6250 TX-CG 110.9
RICHFIELD PRI A/G RX 168.0125 ♦ TX 168.0125 ♦	RICHFIELD SEC A/G RX 168.1500 ♦ TX 168.1500 TX-CG 131.8	SALT LAKE LOCAL RX 171.4750 ♦ TX 171.4750 TX-CG 156.7	SALT LAKE BLK CROOK RX 171.4750 ♦ TX 172.2250 TX-CG 167.9	SALT LAKE PRI A/G RX 154.3100 ♦ TX 154.3100 ♦	SALT LAKE SEC A/G RX 168.7250 ♦ TX 168.7250 TX-CG 123.0	UT TAC RX 154.2800 ♦ TX 154.2800 TX-CG 110.9	NATIONAL WEATHER SERVICE RX 162.4000 ♦	NATIONAL WEATHER SERVICE RX 162.5500 ♦
GOV COMM 2 RX 168.3500 ♦ TX 168.3500 ♦	ALAMO VFD RX 155.7450 ♦ TX 155.7450 ♦	PANACA VFD RX 154.2800 ♦ TX 154.2800 ♦	PIOCHE VFD RX 153.8450 ♦ TX 153.8450 ♦	CALIENTE VFD RX 154.0250 ♦ TX 154.0250 ♦	ELY SOA RPTR RX 171.6750 RX-CG 114.8 TX 168.2250 TX-CG 123.0	ELY P Air/Grnd RX 167.6000 ♦ TX 167.6000 ♦	ELY SEC A/G RX 166.8000 ♦ TX 166.8000 ♦	BLM SOA RX 171.6750 RX-CG 114.8 TX 171.6750 TX-CG 114.8
HNF LOCAL RX 169.9000 RX-CG 162.2 TX 169.9000 TX-CG 162.2	HNF 3 CAVE RX 169.9000 RX-CG 162.2 TX 164.1375 TX-CG 156.7	HNF 6 HAMILTON RX 169.9000 RX-CG 162.2 TX 164.1375 TX-CG 103.5	HNF 7 WORTHINGT RX 169.9000 RX-CG 162.2 TX 164.1375 TX-CG 167.9	NDF RED 1 RX 159.3450 ♦ TX 159.3450 ♦	NPS CAVE RX 171.7750 RX-CG 131.8 TX 163.1500 TX-CG 123.0	NPS KINGTOP RX 171.1625 RX-CG 131.8 TX 163.1500 TX-CG 110.9	ELY P A/G RX 167.6000 ♦ TX 167.6000 ♦	BLM SOA RX 171.6750 RX-CG 114.8 TX 171.6750 TX-CG 114.8
CEDAR CITY LOCAL RX 164.6250 ♦ TX 164.6250 ♦	ALAMO VFD RX 155.7450 RX-CG 123.0 TX 155.7450 TX-CG 123.0	PANACA VFD RX 154.2800 RX-CG 74.4 TX 154.2800 TX-CG 74.4	PIOCHE VFD RX 153.8450 RX-CG 91.5 TX 153.8450 TX-CG 91.5	CALIENTE VFD RX 154.0250 ♦ TX 155.0550 TX-CG 79.7	NDF RED 1 RX 159.3450 ♦ TX 159.3450 ♦	LC MUT AID RX 155.1450 ♦ TX 155.1450 ♦	ELY P Air/Grnd RX 167.6000 ♦ TX 167.6000 ♦	BLM SOA RX 171.6750 RX-CG 114.8 TX 171.6750 TX-CG 114.8

KNG Mobile

Zone	Chan 1	Chan 2	Chan 3	Chan 4	Chan 5	Chan 6	Chan 7	Chan 8
13 VFDs	WHITEPINE	WHITEPINE	WHITEPINE	WHITEPINE	WHITEPINE	WHITEPINE	WHITEPINE	WHITEPINE
	LOCAL	KIMBERLY	CAVE	KING	McGILL	CURRANT	VICTORIA	TIMBER
	RX 159.1800	RX 159.1800	RX 159.1800	RX 159.1800	RX 159.1800	RX 159.1800	RX 159.1800	RX 159.1800
	♦	♦	♦	♦	♦	♦	♦	♦
	TX 159.1800	TX 153.9650	TX 153.9650	TX 153.9650	TX 153.9650	TX 153.9650	TX 153.9650	TX 153.9650
	♦	TX-CG 100.0	TX-CG 088.5	TX-CG 127.3	TX-CG 107.2	TX-CG 094.8	TX-CG 146.2	TX-CG 118.8
14 Fire	ELY	ELY	NEVCORD 1	NEVCORD 2	FUTURE	FUTURE	FUTURE	FUTURE
	EXTENDER	SOA RPTR	VMED 28	VMED 29				
	RX 168.2250	RX 171.6750	RX 155.3400	RX 155.3475				
	RX-CG 110.9	RX-CG 114.8	♦	♦				
	TX 168.2250	TX 168.2250	TX 155.3400	TX 155.3475				
	TX-CG 110.9	TX-CG 123.0	TX-CG 156.7	TX-CG 156.7				
15 Ely Horse	HORSE 1	HORSE 2	ELY N	BALD	N. IRISH	PROSPECT	KERNS	WARD
	RX 163.1000	RX 168.3500	RX 169.7750	RX 169.7750	RX 169.7750	RX 169.7750	RX 169.7750	RX 169.7750
	RX-CG 173.8	RX-CG 173.8	RX-CG 123.0	RX-CG 123.0	RX-CG 123.0	RX-CG 123.0	RX-CG 123.0	RX-CG 123.0
	TX 163.1000	TX 168.3500	TX 169.7750	TX 162.1625	TX 162.1625	TX 162.1625	TX 162.1625	TX 162.1625
	TX-CG 173.8	TX-CG 173.8	TX-CG 123.0	TX-CG 110.9	TX-CG 123.0	TX-CG 131.8	TX-CG 136.5	TX-CG 146.2
16 BK Tone Select	CH 1	CH 2	CH 3	CH 4	CH 5	CH 6	CH 7	CH 8
	TX-CG 110.9	TX-CG 123.0	TX-CG 131.8	TX-CG 136.5	TX-CG 146.2	TX-CG 156.7	TX-CG 167.9	TX-CG 103.5
17 BK Tone Select	CH 1	CH 2	CH 3	CH 4	CH 5	CH 6	CH 7	CH 8
	TX-CG 127.3	TX-CG 141.3	TX-CG 162.2	TX-CG 192.8	TX-CG 67	TX-CG 71.9	TX-CG 74.4	TX-CG 77.0
18 Nevada Tone List	ELKO	WMCA 1	WMCA 2	CC	ELY N	ELY S	SNDO	BM N
	RX-171.5375	RX-172.5750	RX-169.9750	RX-169.9875	RX-169.7750	RX-170.0250	RX-173.0500	RX-171.7250
	RX-CG 110.9	RX-CG 103.5	RX-CG 103.5	RX-CG 146.2	RX-CG 123.0	RX-CG 123.0	RX-CG 114.8	RX-CG 110.9
	TX-171.5375	TX-164.7250	TX-171.4250	TX-162.2375	TX-162.1625	TX-166.3750	TX-164.4750	TX-164.8375
	TX-CG 110.9	TX-CG 103.5	TX-CG 107.2	TX-CG 146.2	TX-CG 123.0	TX-CG 131.8	TX-CG 114.8	TX-CG 100.0
19-25 DPH Open	FUTURE	FUTURE	FUTURE	FUTURE	FUTURE	FUTURE	FUTURE	FUTURE
19-28 KNG Open								
29-33 KNG Only CMD Zones	FUTURE	FUTURE	FUTURE	FUTURE	FUTURE	FUTURE	FUTURE	FUTURE

Conventional ▾

Button Configuration **Keypad Configuration**

Orange: Backlight ▾ F1: Channel Scan

Side Top: Tx Power ▾ F2: Channel Scan List

Side Middle: Priority Scan ▾ F3: Channel Add/Delete

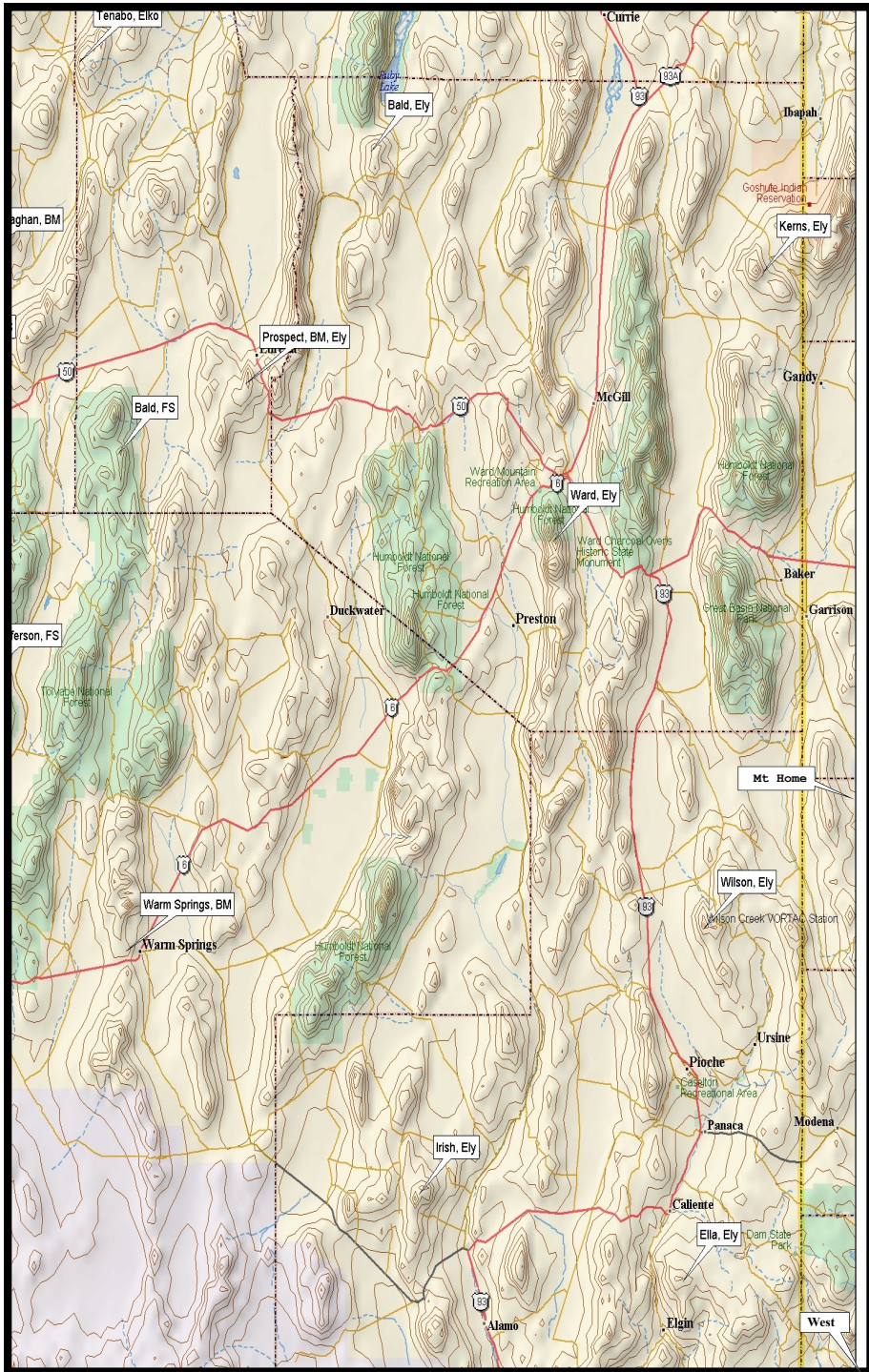
Side Bottom: Priority Channel Select ▾ F4: Zone Select

Home: Home Channel ▾ Button Press(sec): 1.0 ▾

HCH Top Right: Channel Scan ▾ Button Long Press(sec): 2.0 ▾

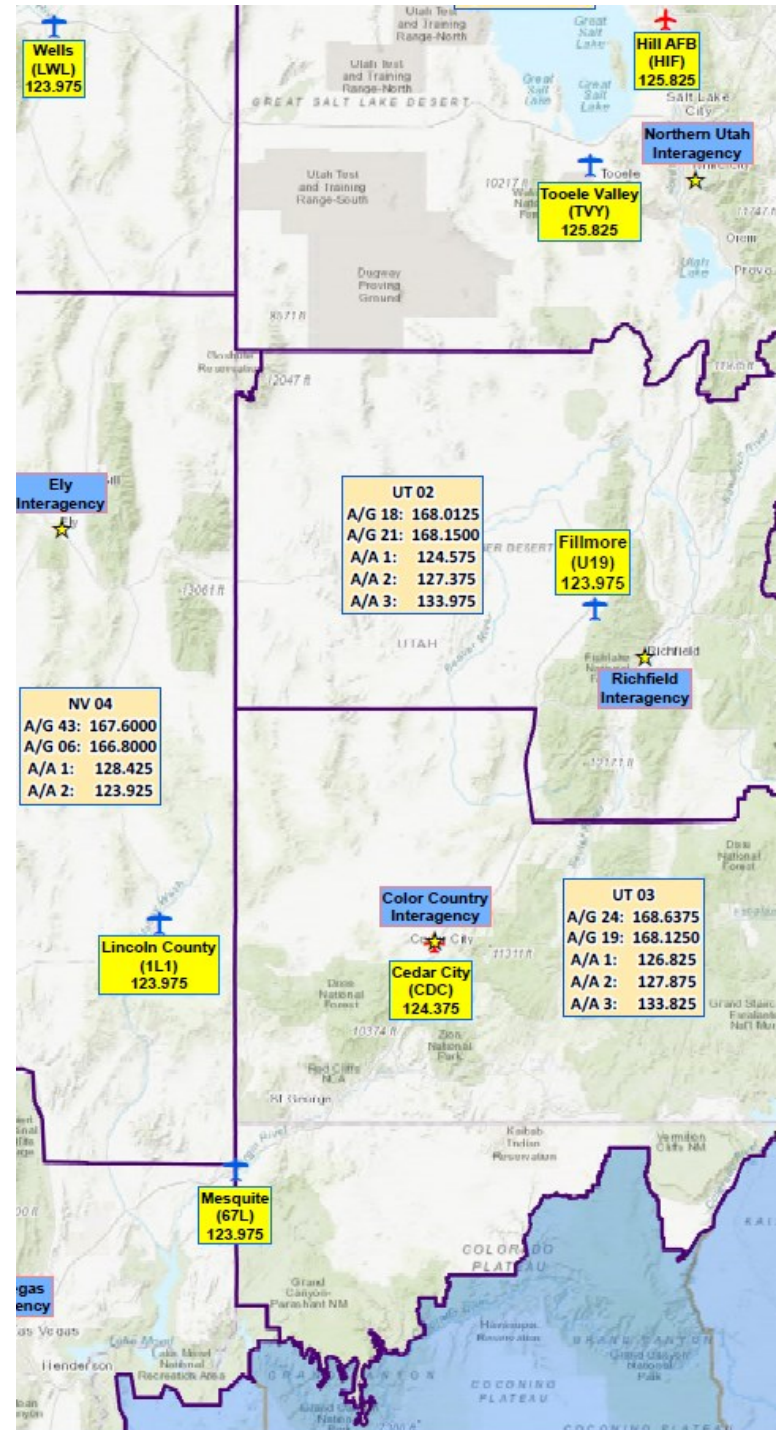
Keypad Select: Zone ▾

ELY

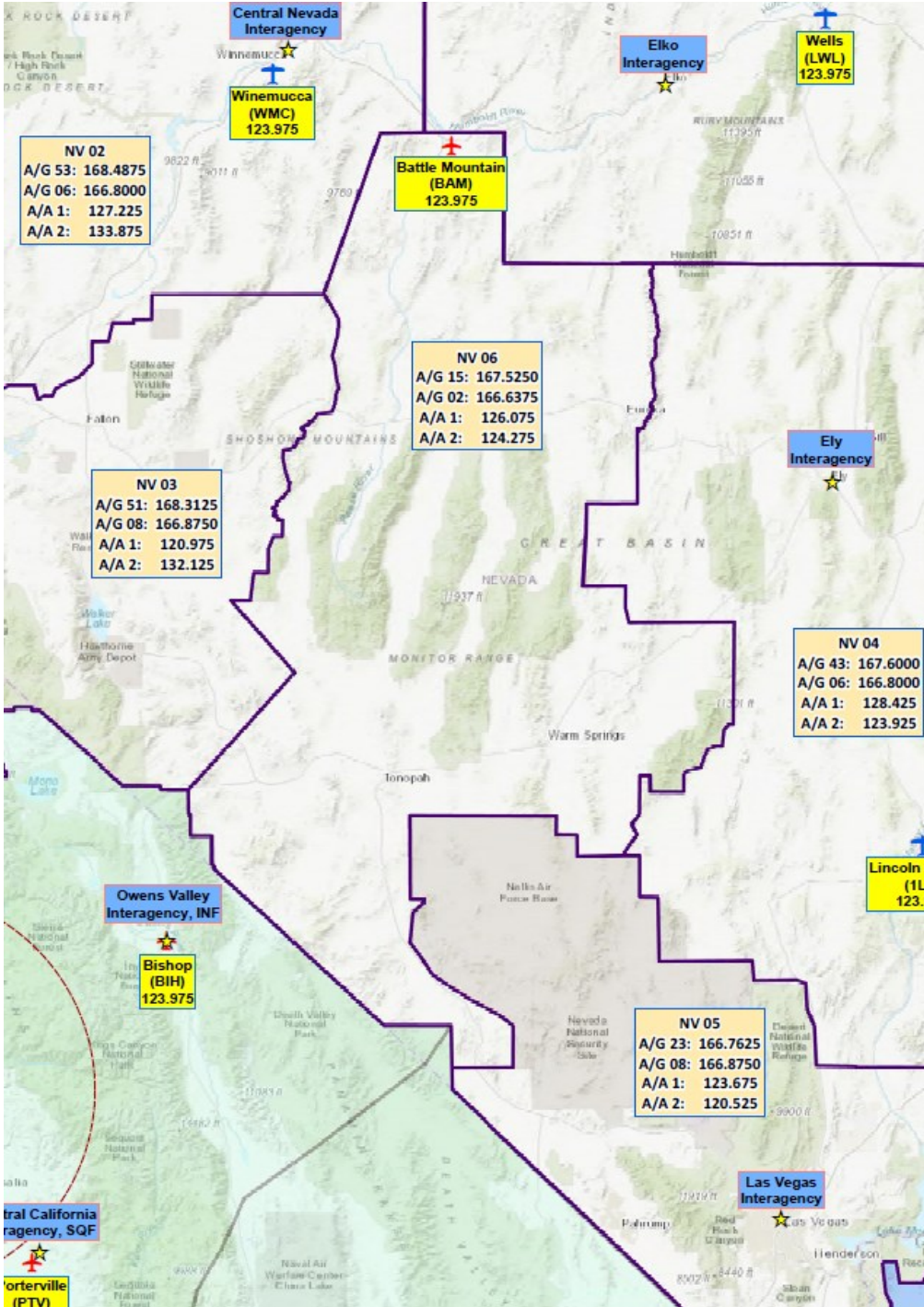


Controlled Unclassified Information//Basic

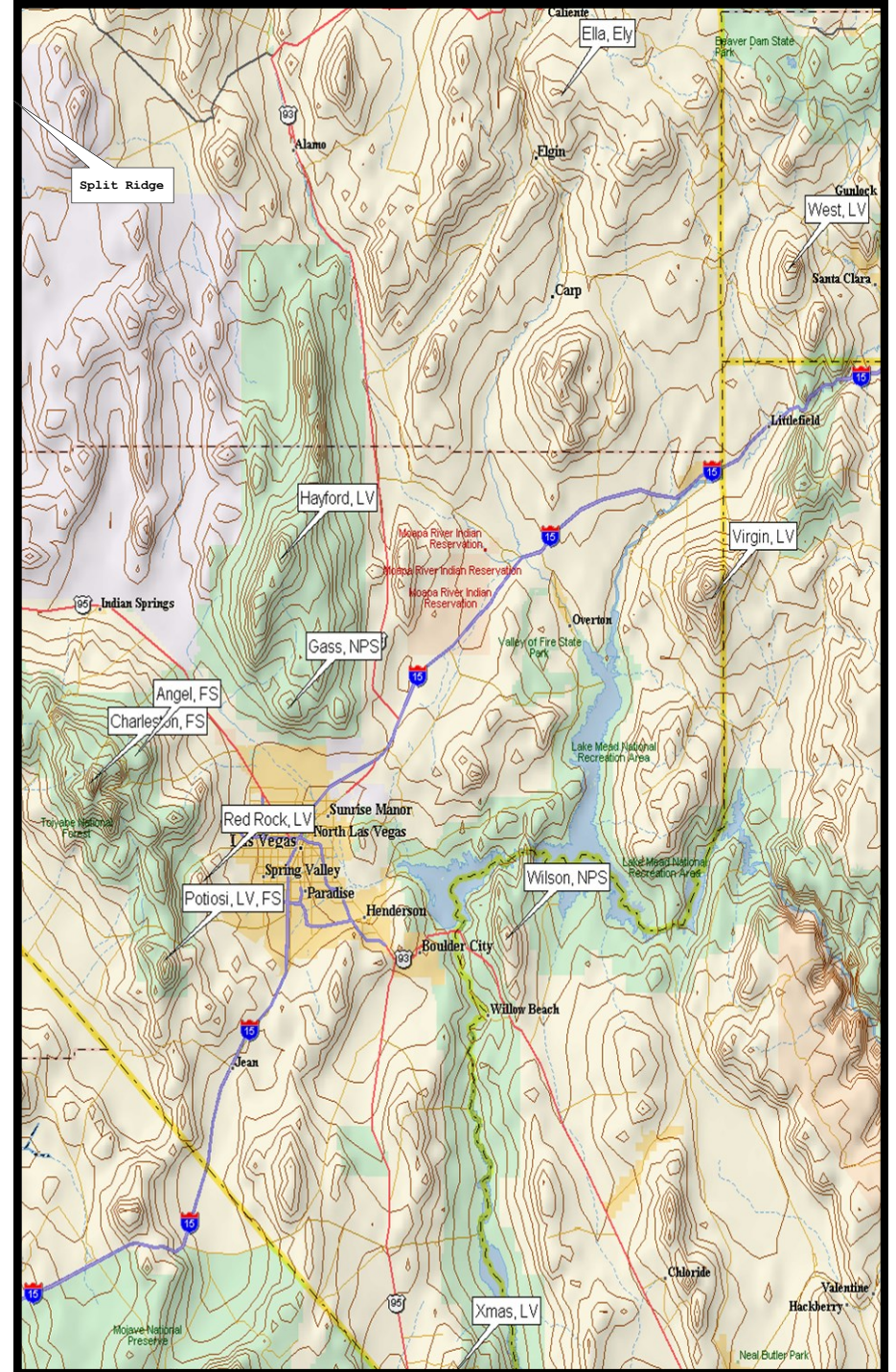
GREAT BASIN COORDINATION CENTER IA ZONES 2019 COMBINED AIR-TO-GROUND (FM) & AIR-TO-AIR (AM) RADIO FREQUENCIES



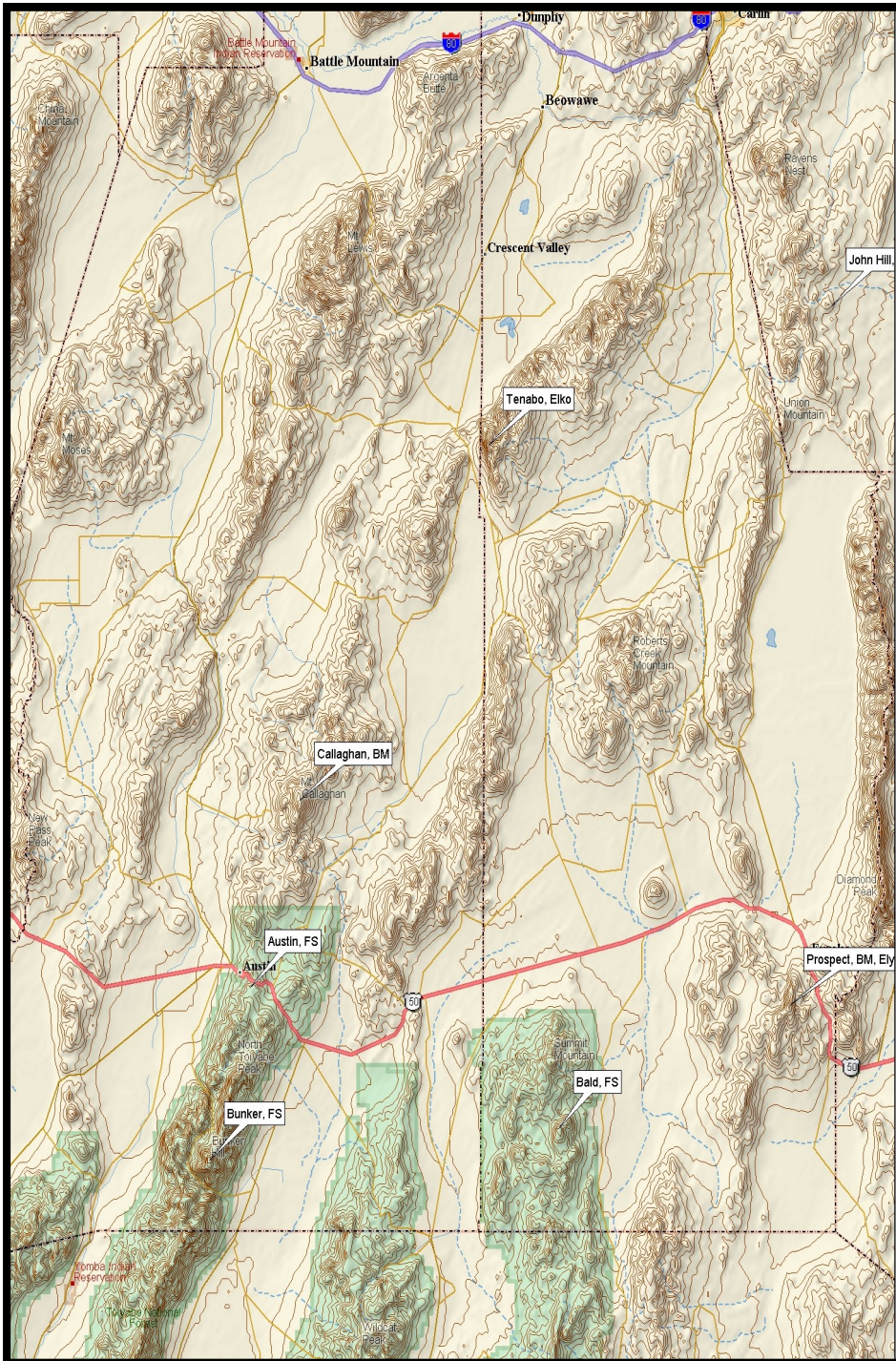
**GREAT BASIN COORDINATION CENTER IA ZONES
2019 COMBINED AIR-TO-GROUND (FM) & AIR-TO-AIR
(AM) RADIO FREQUENCIES**



LAS VEGAS



BATTLE MOUNTAIN




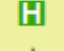
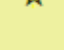


Legend for

GREAT BASIN COORDINATION CENTER IA ZONES 2019 COMBINED AIR-TO-GROUND (FM) & AIR-TO-AIR (AM) RADIO FREQUENCIES

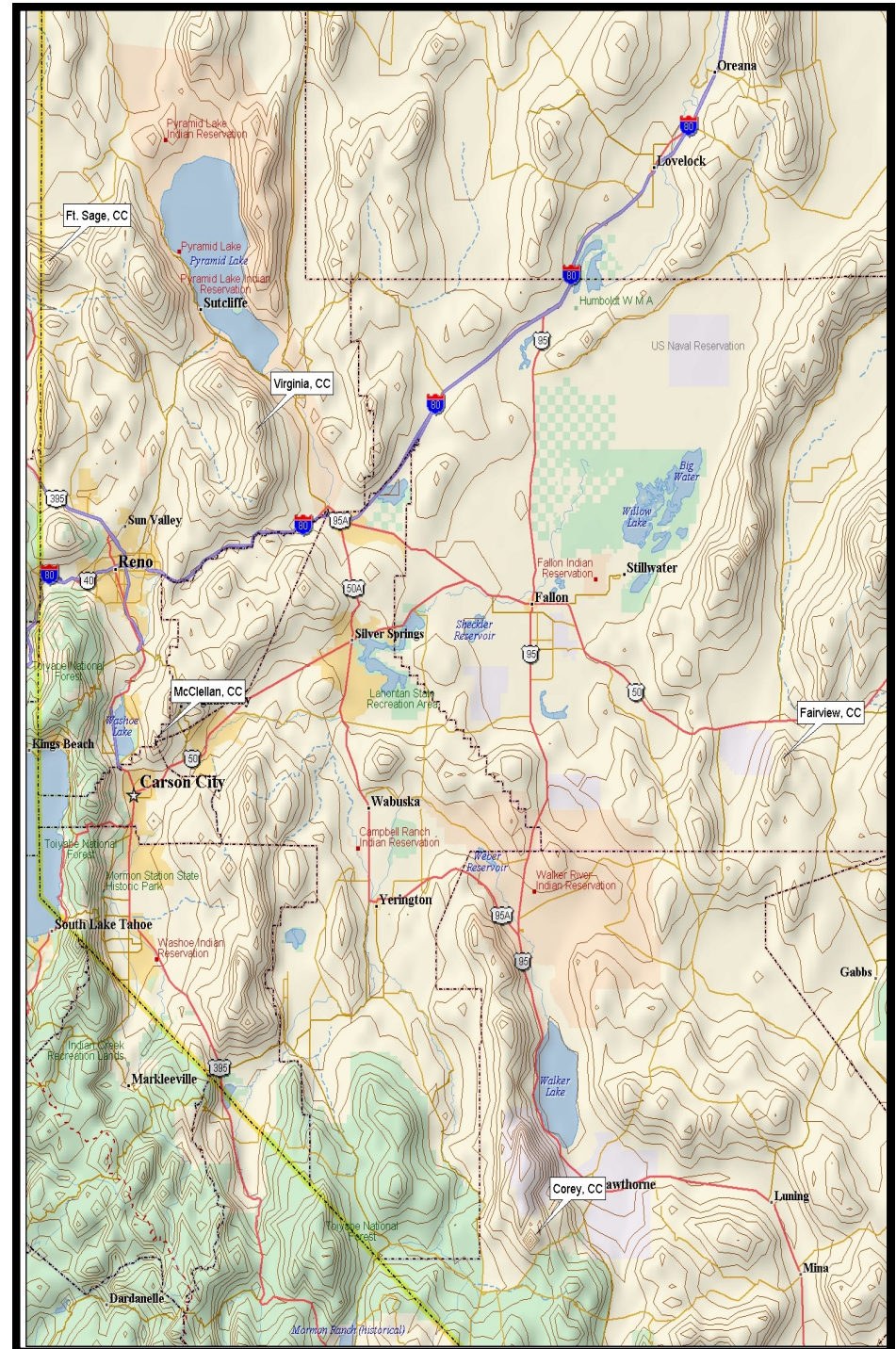
FOR OFFICIAL USE ONLY

This Document was produced by the National Interagency Incident Communications Division (NIICD). For questions or map access, please contact the Communications Duty Officer (CDO) @ nifccdo@usda.gov or 208-387-5644

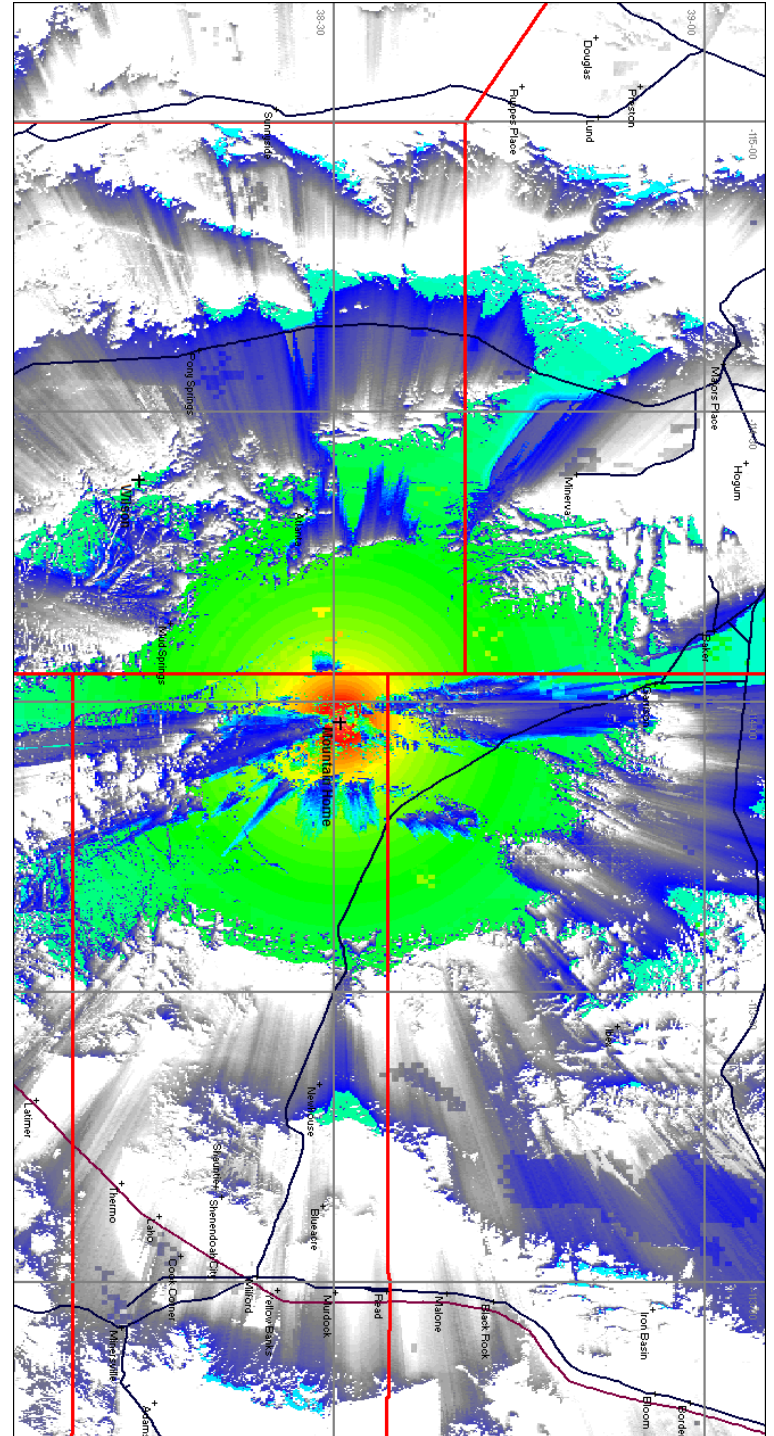
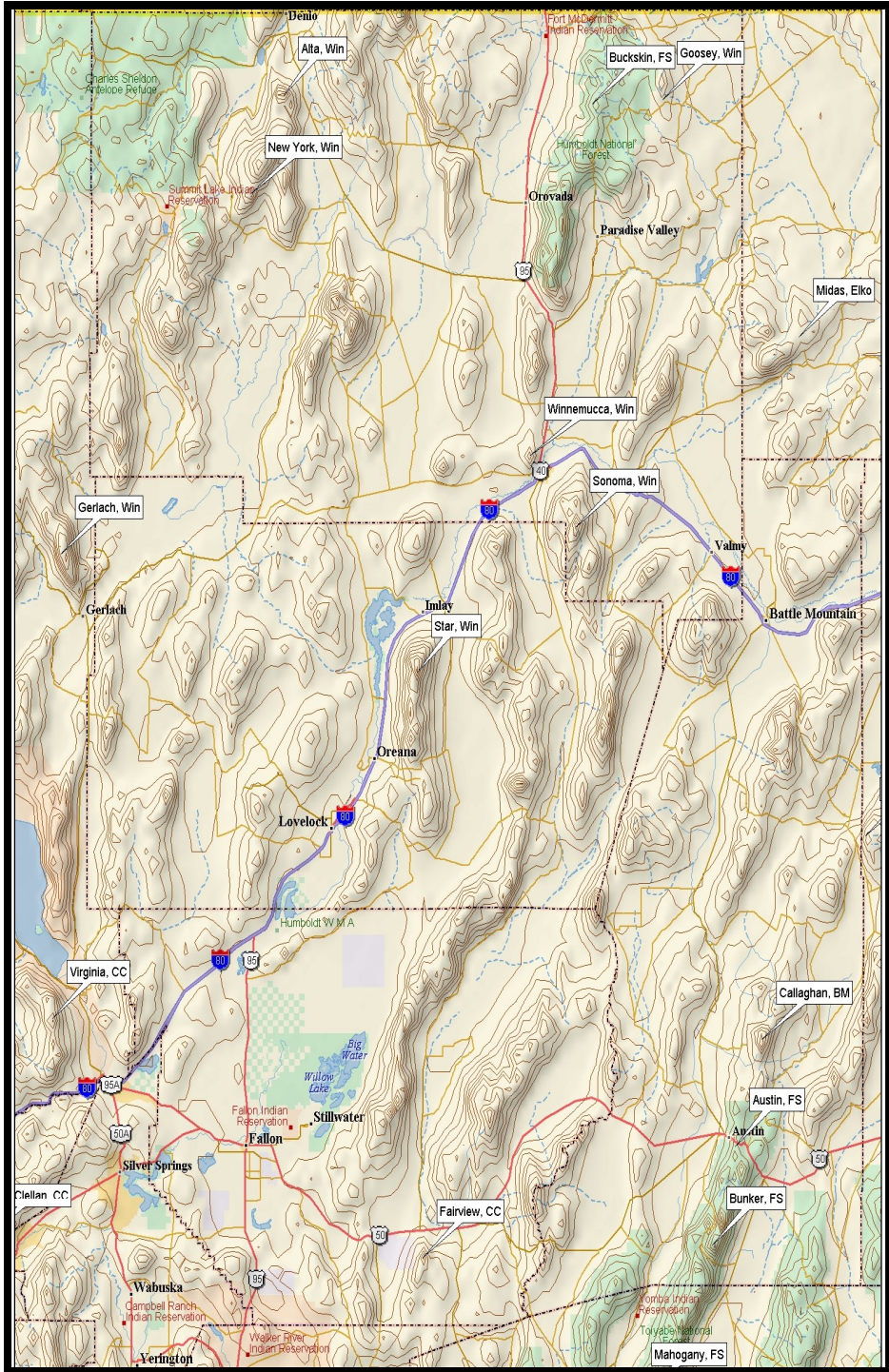
-  Radio Communications Zones
-  Tanker Base Locations
-  SEAT Base Locations
-  Heli-Base Locations
-  Dispatch Center

Modified: March, 2019/ V2019.1

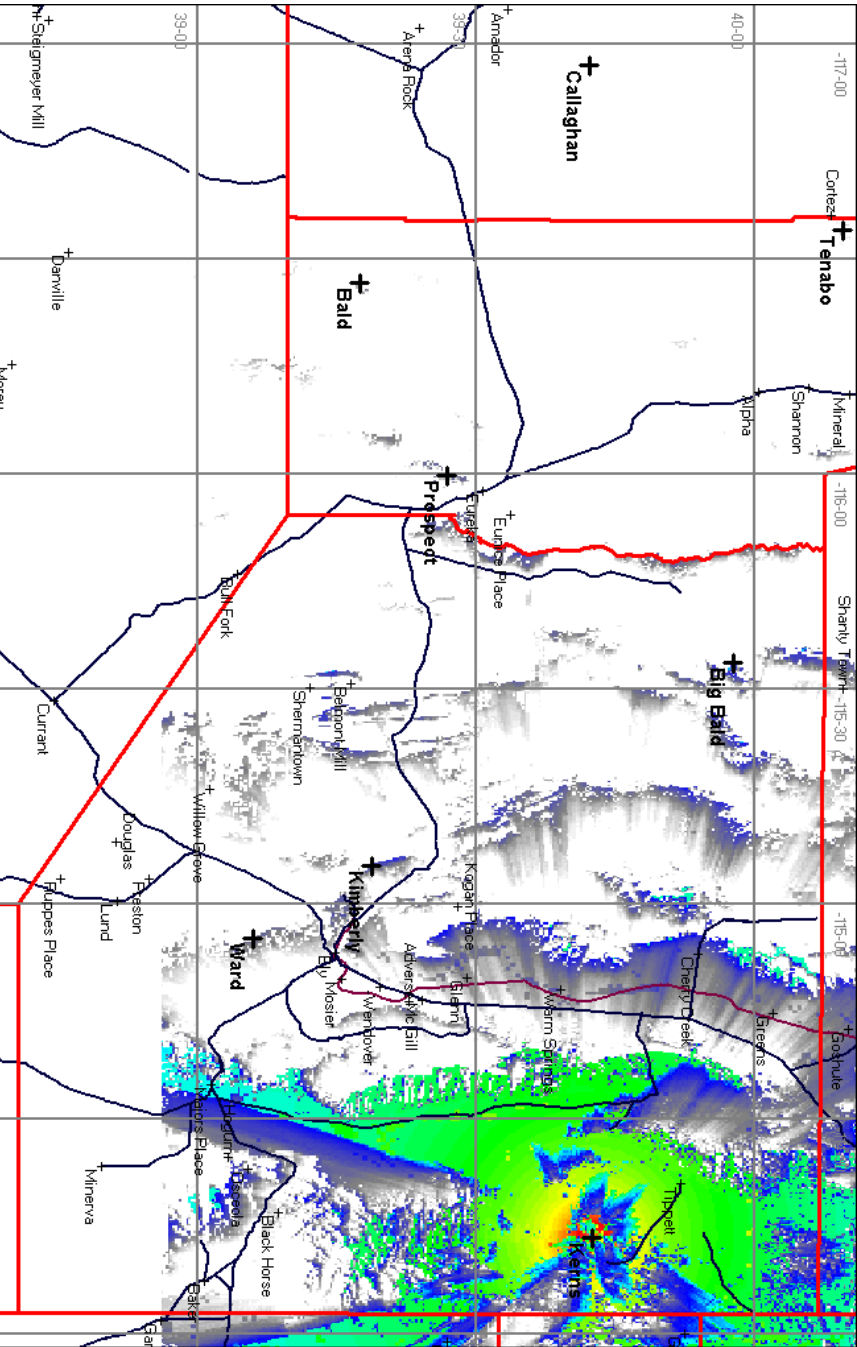
CARSON



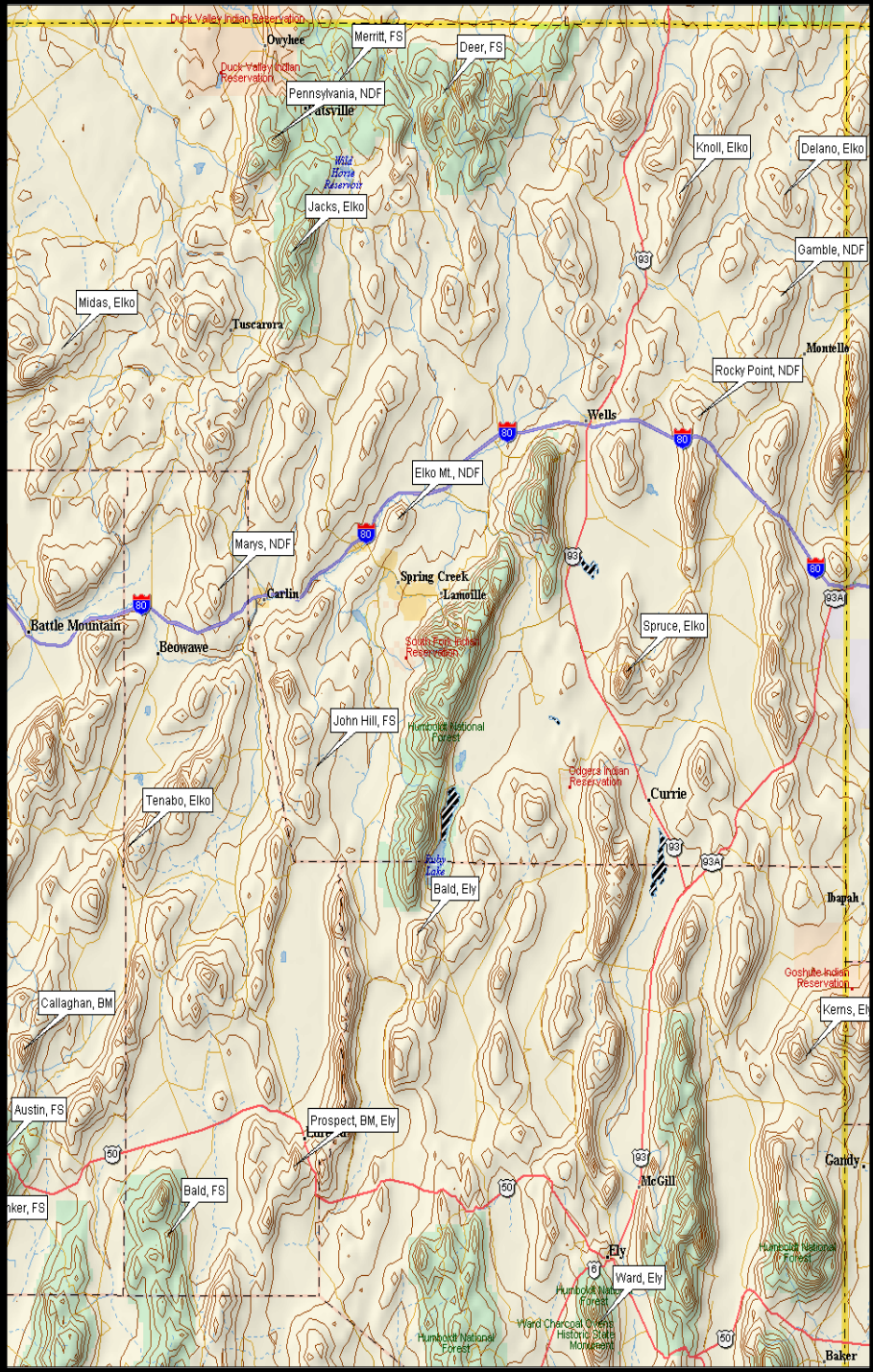
WINNEMUCCA



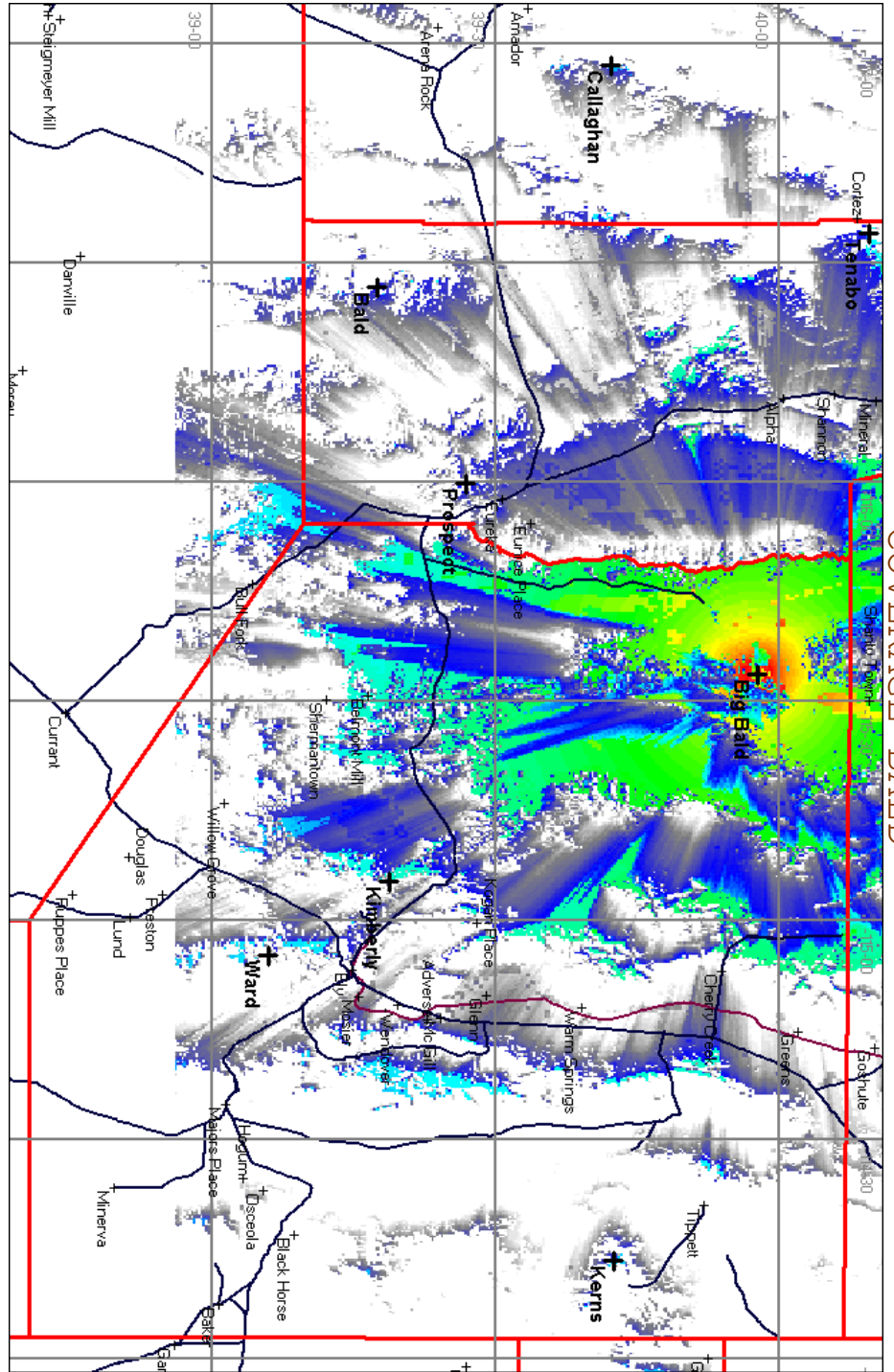
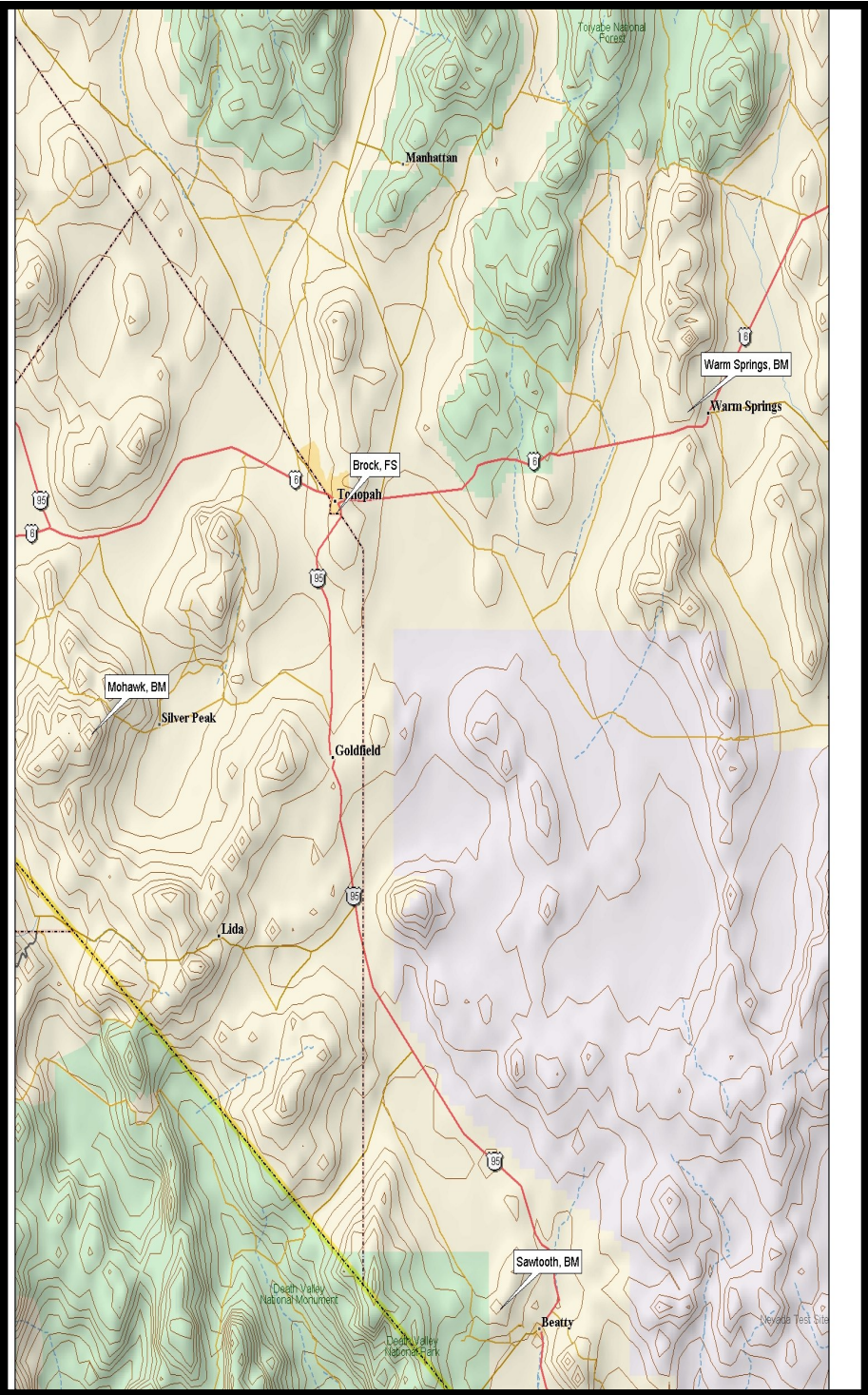
COVERAGE Mt HOME



COVERAGE KERNS

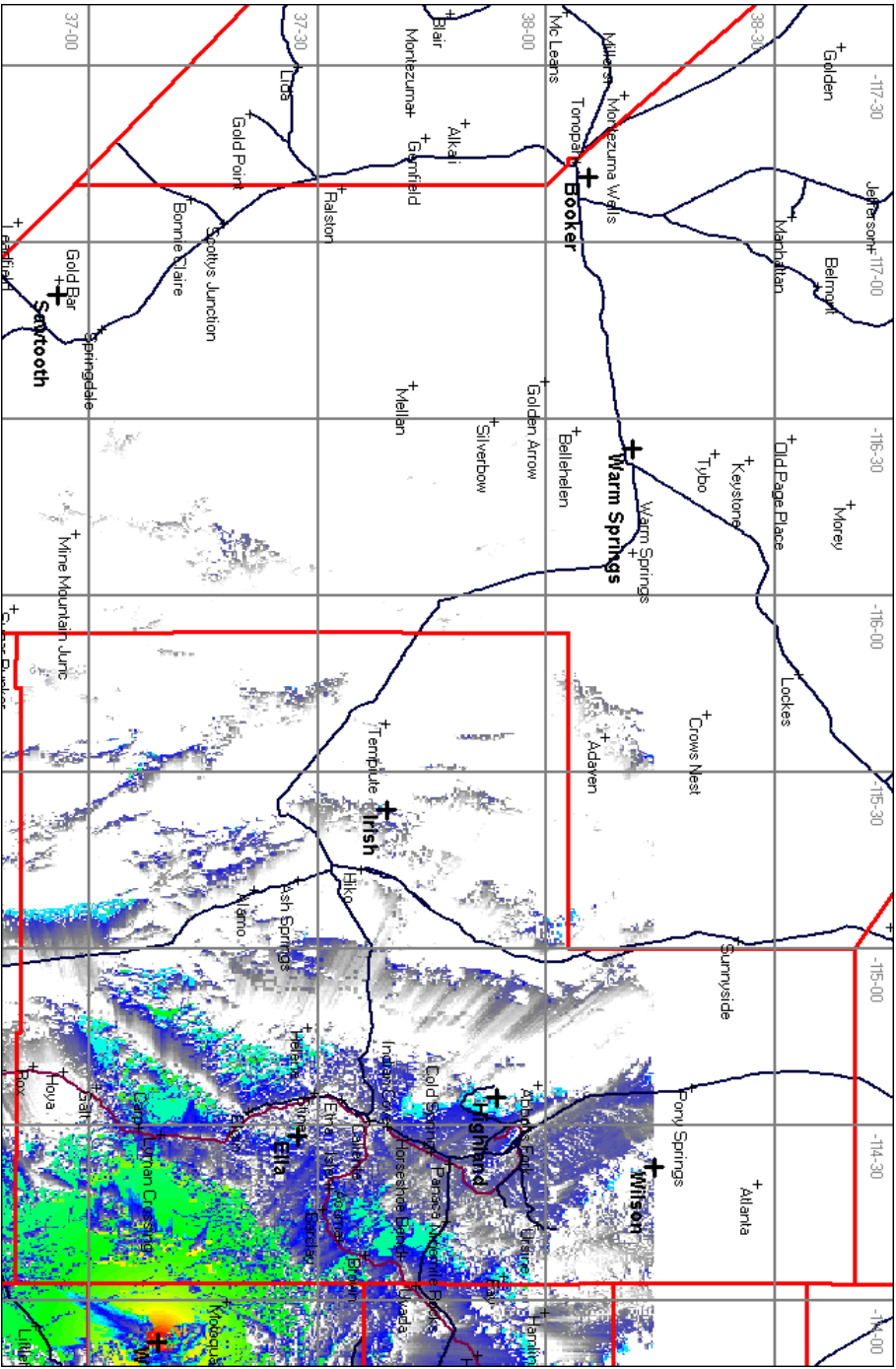


Tonopah

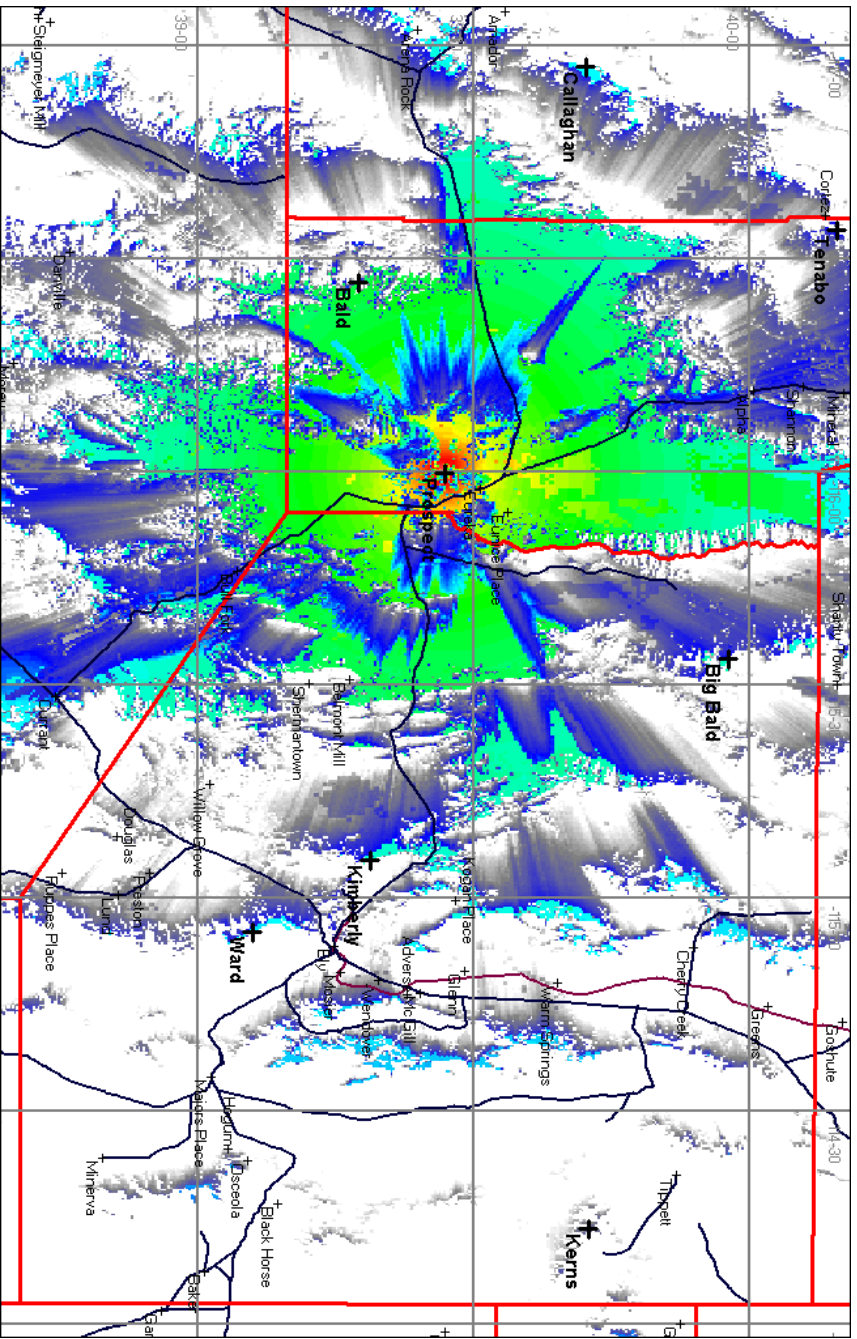


COVERAGE BALD

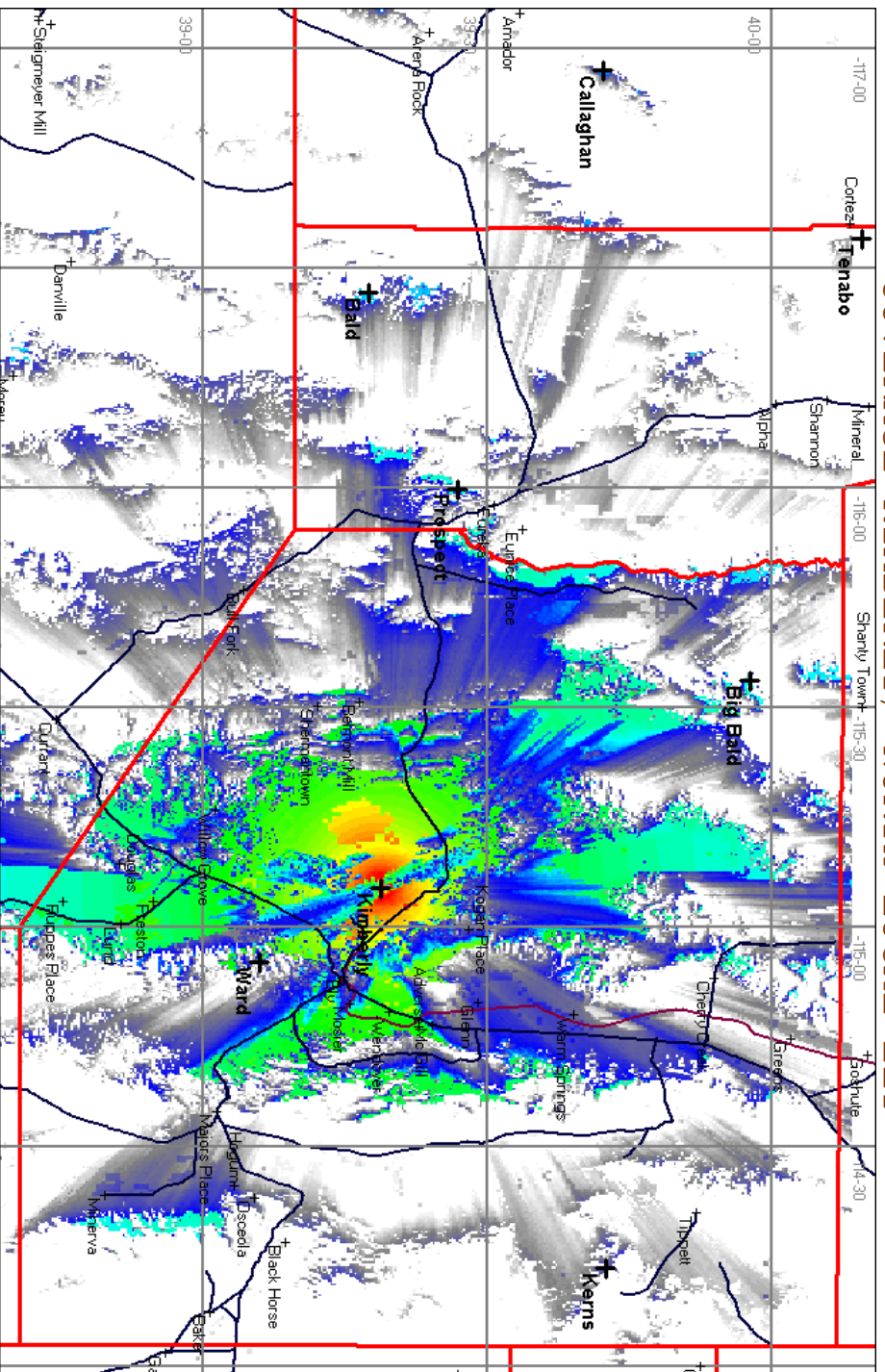
COVERAGE WEST



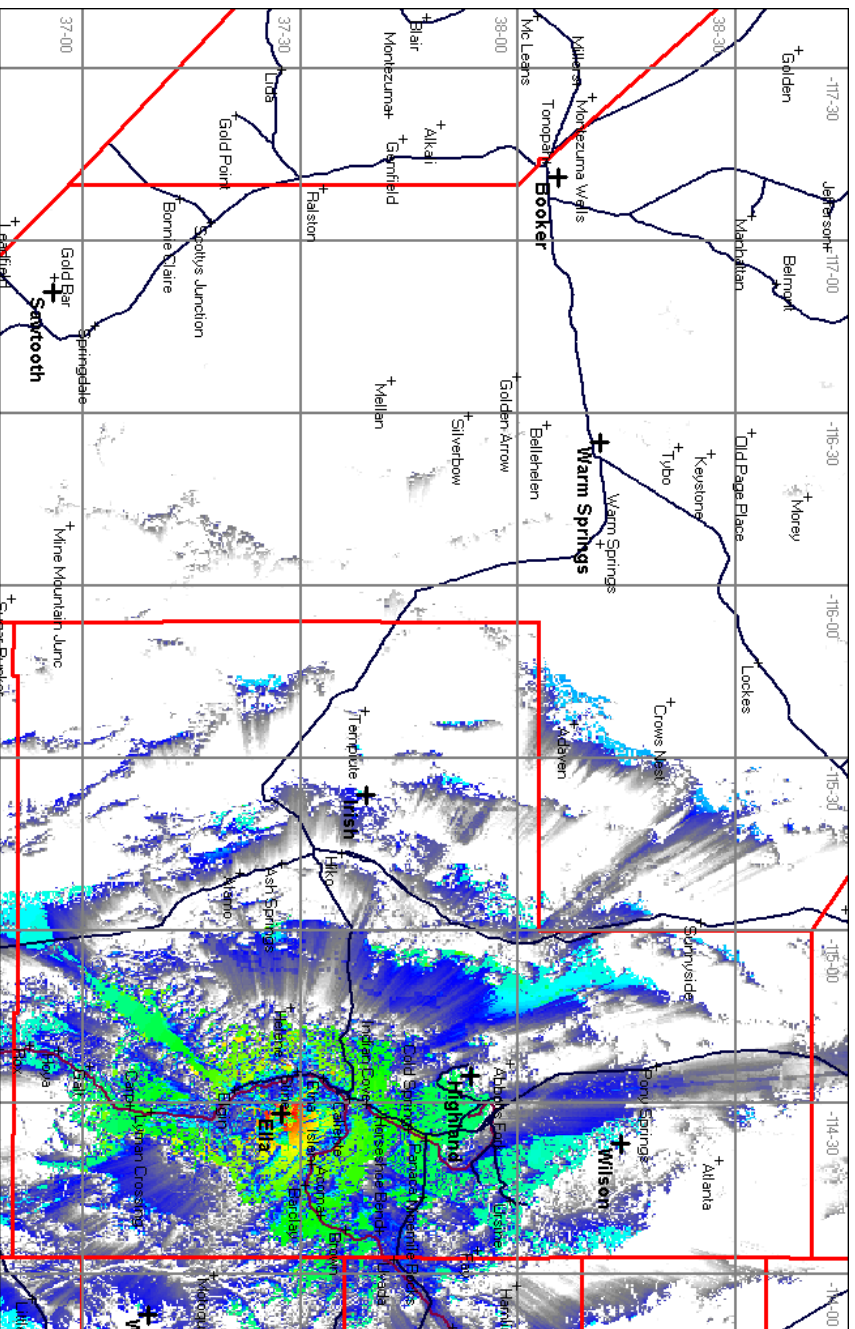
COVERAGE PROSPECT



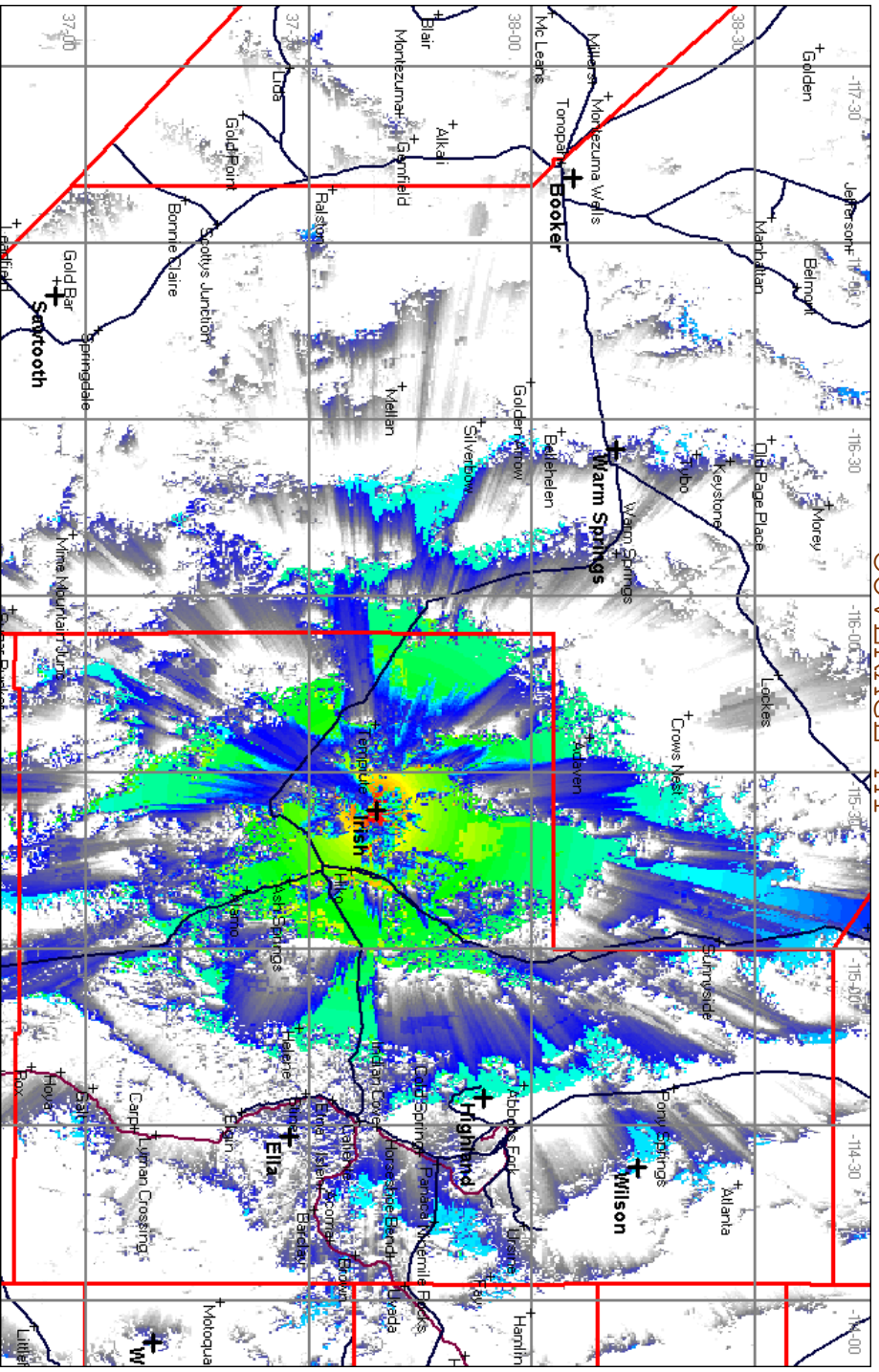
COVERAGE KIMBERLY / NORTH LOCAL ELY



COVERAGE ELLA



COVERAGE MT



COVERAGE WILSON

