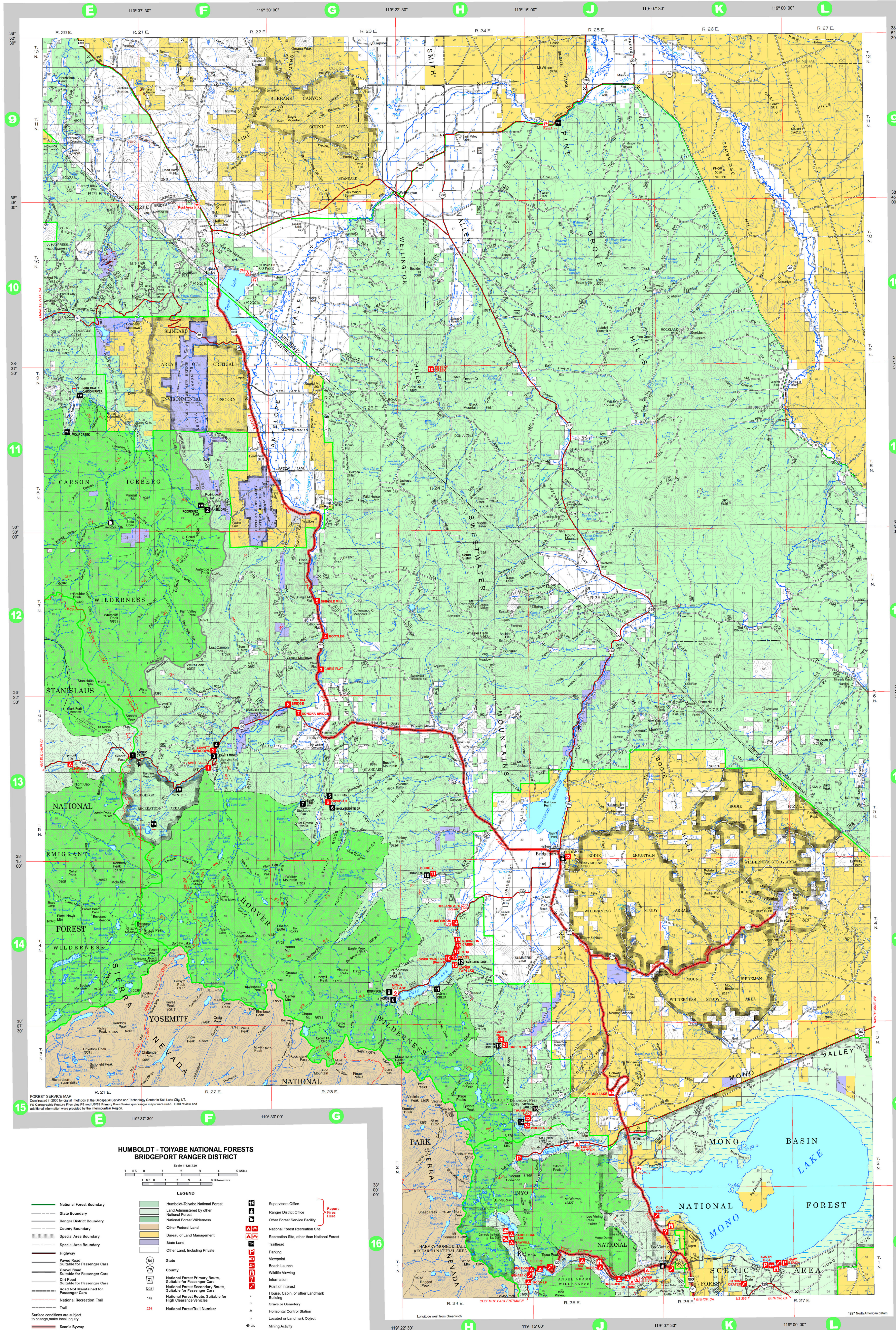


HUMBOLDT-TOIYABE NATIONAL FORESTS BRIDGEPORT RD (WEST SIDE)

2014



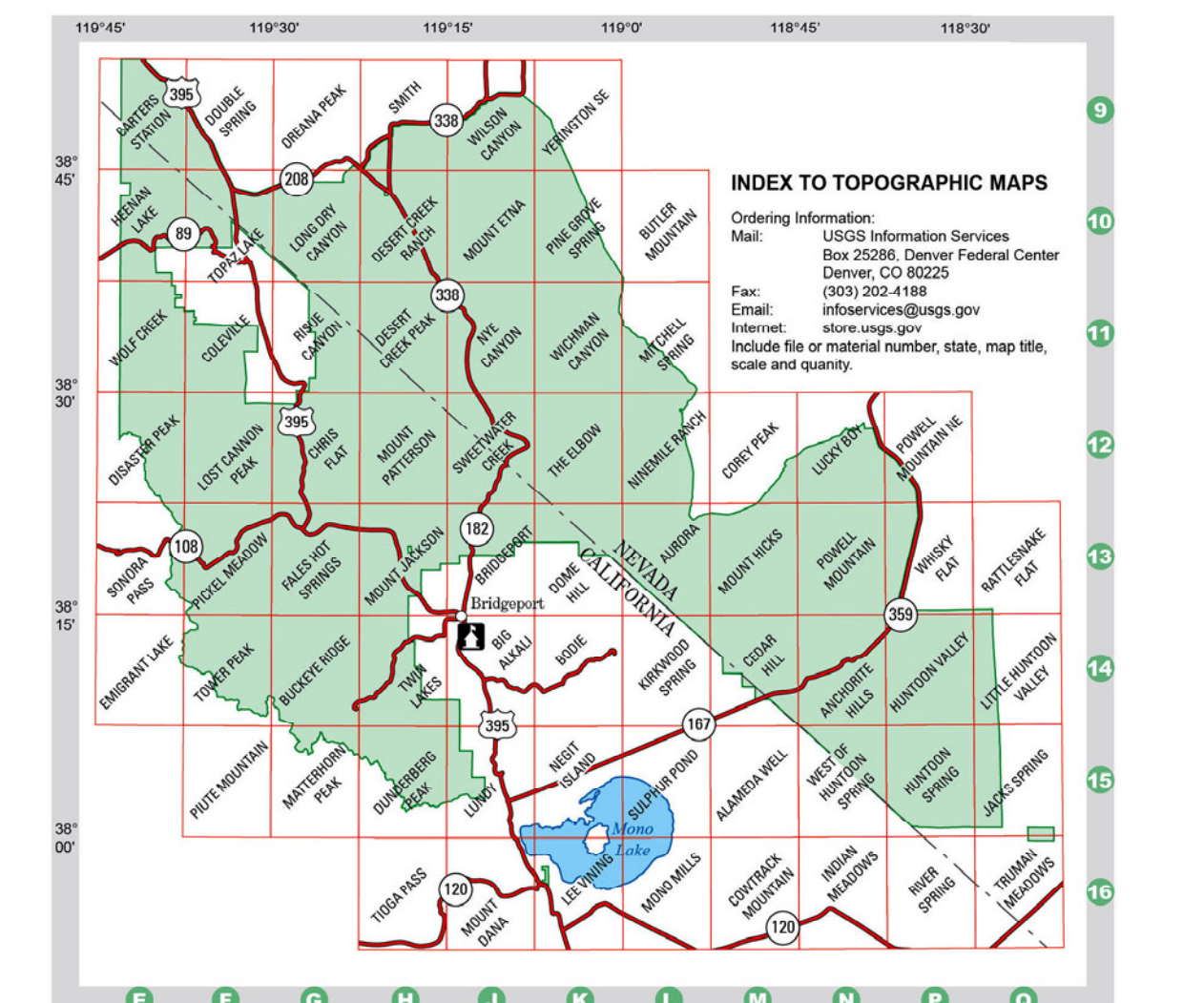
RECREATION SITE INFORMATION

Site Number	Recreation Site Name	Location	Season of Use	Elevation in Feet	Number of Units	Activities And Facilities
1	LEWITT FALLS VISTA	F-13	May-Oct	7000	16	[A][B][C][D][E][F][G][H][I][J][K][L][M][N][O][P][Q][R][S][T][U][V][W][X][Y][Z]
2	LEWITT MEADOWS	F-13	May-Oct	7000	16	[A][B][C][D][E][F][G][H][I][J][K][L][M][N][O][P][Q][R][S][T][U][V][W][X][Y][Z]
3	CHRIS FLAT	G-12	May-Oct	8800	15	[A][B][C][D][E][F][G][H][I][J][K][L][M][N][O][P][Q][R][S][T][U][V][W][X][Y][Z]
4	BOOTHLEY	G-12	May-Sep	8800	63	[A][B][C][D][E][F][G][H][I][J][K][L][M][N][O][P][Q][R][S][T][U][V][W][X][Y][Z]
5	SHINGLE MILL DAY USE	G-12	May-Oct	8800	15	[A][B][C][D][E][F][G][H][I][J][K][L][M][N][O][P][Q][R][S][T][U][V][W][X][Y][Z]
6	ORISKAN	G-13	May-Oct	7840	14	[A][B][C][D][E][F][G][H][I][J][K][L][M][N][O][P][Q][R][S][T][U][V][W][X][Y][Z]
7	SONORA BRIDGE	G-13	May-Oct	6800	23	[A][B][C][D][E][F][G][H][I][J][K][L][M][N][O][P][Q][R][S][T][U][V][W][X][Y][Z]
8	SONORA BRIDGE	G-13	May-Oct	6800	23	[A][B][C][D][E][F][G][H][I][J][K][L][M][N][O][P][Q][R][S][T][U][V][W][X][Y][Z]
9	MONO RELEASE RESORT	G-14	May-Oct	7000	13	[A][B][C][D][E][F][G][H][I][J][K][L][M][N][O][P][Q][R][S][T][U][V][W][X][Y][Z]
10	DESERT CREEK	H-15	May-Oct	6200	13	[A][B][C][D][E][F][G][H][I][J][K][L][M][N][O][P][Q][R][S][T][U][V][W][X][Y][Z]
11	BUCKEYE	H-14	May-Oct	7000	68	[A][B][C][D][E][F][G][H][I][J][K][L][M][N][O][P][Q][R][S][T][U][V][W][X][Y][Z]
12	GRASS	H-14	May-Oct	7000	26	[A][B][C][D][E][F][G][H][I][J][K][L][M][N][O][P][Q][R][S][T][U][V][W][X][Y][Z]
13	DOG ALE'S RESORT	H-14	May-Oct	7000	26	[A][B][C][D][E][F][G][H][I][J][K][L][M][N][O][P][Q][R][S][T][U][V][W][X][Y][Z]
14	HONEYMOON FLAT	H-14	May-Oct	7000	46	[A][B][C][D][E][F][G][H][I][J][K][L][M][N][O][P][Q][R][S][T][U][V][W][X][Y][Z]
15	LOWER TWIN LAKES	H-14	May-Sep	7000	15	[A][B][C][D][E][F][G][H][I][J][K][L][M][N][O][P][Q][R][S][T][U][V][W][X][Y][Z]
16	LOWER TWIN LAKES RESORT	H-14	May-Oct	7000	15	[A][B][C][D][E][F][G][H][I][J][K][L][M][N][O][P][Q][R][S][T][U][V][W][X][Y][Z]
17	PAWA	H-14	May-Sep	7000	22	[A][B][C][D][E][F][G][H][I][J][K][L][M][N][O][P][Q][R][S][T][U][V][W][X][Y][Z]
18	ROBINSON CREEK AMPHITHEATER	H-14	May-Sep	7000	11	[A][B][C][D][E][F][G][H][I][J][K][L][M][N][O][P][Q][R][S][T][U][V][W][X][Y][Z]
19	ROBINSON CREEK	H-14	May-Oct	7000	54	[A][B][C][D][E][F][G][H][I][J][K][L][M][N][O][P][Q][R][S][T][U][V][W][X][Y][Z]
20	GREEN CREEK	H-15	May-Sep	7000	11	[A][B][C][D][E][F][G][H][I][J][K][L][M][N][O][P][Q][R][S][T][U][V][W][X][Y][Z]
21	GREEN CREEK GROUP SITE	H-15	May-Sep	7000	2	[A][B][C][D][E][F][G][H][I][J][K][L][M][N][O][P][Q][R][S][T][U][V][W][X][Y][Z]
22	TRUMBULL LAKE	H-15	May-Sep	9200	45	[A][B][C][D][E][F][G][H][I][J][K][L][M][N][O][P][Q][R][S][T][U][V][W][X][Y][Z]
23	BRIDGEPORT RANGER STATION	J-15	All Year	8450	1	[A][B][C][D][E][F][G][H][I][J][K][L][M][N][O][P][Q][R][S][T][U][V][W][X][Y][Z]
24	VIRGINIA LAKES	J-15	Jun-Oct	9500	1	[A][B][C][D][E][F][G][H][I][J][K][L][M][N][O][P][Q][R][S][T][U][V][W][X][Y][Z]

TRAILHEAD INFORMATION

Site Number	Recreation Site Name	Location	Season of Use	Elevation in Feet	Activities And Facilities	Remarks
1	PACIFIC CREST	E-13	May-Oct	9200	[A][B][C][D][E][F][G][H][I][J][K][L][M][N][O][P][Q][R][S][T][U][V][W][X][Y][Z]	
2	LITTLE ANTELOPE	F-11	Jun-Oct	8500	[A][B][C][D][E][F][G][H][I][J][K][L][M][N][O][P][Q][R][S][T][U][V][W][X][Y][Z]	Pack Station
3	LEWITT MEADOWS	F-13	Jun-Oct	7000	[A][B][C][D][E][F][G][H][I][J][K][L][M][N][O][P][Q][R][S][T][U][V][W][X][Y][Z]	Pack Station
4	LEWITT MEADOWS	F-13	May-Oct	7000	[A][B][C][D][E][F][G][H][I][J][K][L][M][N][O][P][Q][R][S][T][U][V][W][X][Y][Z]	
5	TRUBY CANYON	G-13	May-Oct	7840	[A][B][C][D][E][F][G][H][I][J][K][L][M][N][O][P][Q][R][S][T][U][V][W][X][Y][Z]	
6	MOLYDENTITE	G-13	May-Oct	7840	[A][B][C][D][E][F][G][H][I][J][K][L][M][N][O][P][Q][R][S][T][U][V][W][X][Y][Z]	
7	EMMA LAKE	G-13	May-Oct	8800	[A][B][C][D][E][F][G][H][I][J][K][L][M][N][O][P][Q][R][S][T][U][V][W][X][Y][Z]	
8	HORSE CREEK	G-14	May-Oct	7000	[A][B][C][D][E][F][G][H][I][J][K][L][M][N][O][P][Q][R][S][T][U][V][W][X][Y][Z]	
9	ROBINSON CREEK	H-14	May-Oct	7000	[A][B][C][D][E][F][G][H][I][J][K][L][M][N][O][P][Q][R][S][T][U][V][W][X][Y][Z]	Fee for overnight parking
10	BUCKEYE	H-14	May-Oct	7000	[A][B][C][D][E][F][G][H][I][J][K][L][M][N][O][P][Q][R][S][T][U][V][W][X][Y][Z]	
11	CATTLE CREEK	H-14	May-Oct	7000	[A][B][C][D][E][F][G][H][I][J][K][L][M][N][O][P][Q][R][S][T][U][V][W][X][Y][Z]	
12	DAMMACK LAKE	H-14	May-Oct	7000	[A][B][C][D][E][F][G][H][I][J][K][L][M][N][O][P][Q][R][S][T][U][V][W][X][Y][Z]	
13	GREEN CREEK	H-15	May-Oct	7000	[A][B][C][D][E][F][G][H][I][J][K][L][M][N][O][P][Q][R][S][T][U][V][W][X][Y][Z]	
14	VIRGINIA LAKES	J-15	May-Oct	9500	[A][B][C][D][E][F][G][H][I][J][K][L][M][N][O][P][Q][R][S][T][U][V][W][X][Y][Z]	
15	VIRGINIA LAKES	J-15	Jun-Oct	9500	[A][B][C][D][E][F][G][H][I][J][K][L][M][N][O][P][Q][R][S][T][U][V][W][X][Y][Z]	Pack Station

- ### KEY TO SYMBOLS
- Ranger Station
 - FS Campground
 - Non-FS Campground
 - FS Picnic Area
 - Non-FS Picnic Area
 - Lodging
 - Trailer Camping
 - Viewing Area
 - Accessible Facility
 - Restrooms
 - Drinking Water
 - Trash Receptacle
 - Information
 - Reservations Available
 - Parking
 - Amphitheater
 - Pets on Leash
 - Telephone
 - Food Service
 - Grocery Store
 - Laundry
 - Showers
 - Swim Launch
 - Fishing
 - Horse Trail
 - Pack Animals
 - Activity Prohibited



HUMBOLDT-TOIYABE NATIONAL FORESTS BRIDGEPORT RANGER DISTRICT

- Scale 1:126,736
- LEGEND
- National Forest Boundary
 - State Boundary
 - Ranger District Boundary
 - County Boundary
 - Special Area Boundary
 - Other Land, Including Private
 - County
 - National Forest Primary Route
 - National Forest Secondary Route
 - National Forest Route, Suitable for High Clearance Vehicles
 - National Recreation Trail
 - Trail
 - Surface conditions are subject to change; make local inquiry
 - Scenic Byway
 - Railroad
 - Power Transmission Line
 - Humboldt-Toiyabe National Forest
 - Land Administered by other National Forest
 - Other Federal Land
 - Bureau of Land Management
 - State Land
 - Other Land, Including Private
 - County
 - National Forest Primary Route
 - National Forest Secondary Route
 - National Forest Route, Suitable for High Clearance Vehicles
 - National Recreation Trail
 - Trail
 - Surface conditions are subject to change; make local inquiry
 - Scenic Byway
 - Railroad
 - Power Transmission Line
 - Supervisors Office
 - Ranger District Office
 - Other Forest Service Facility
 - National Forest Recreation Site
 - Recreation Site, other than National Forest
 - Trailhead
 - Parking
 - Viewpoint
 - Boath Launch
 - Wildlife Viewing
 - Information
 - Point of Interest
 - House, Cabin, or other Landmark
 - Building
 - Grave or Cemetery
 - Horizontal Control Station
 - Located or Landmark Object
 - Mining Activity
 - Spring, Well
 - Gate