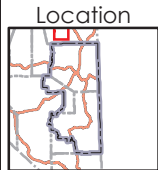
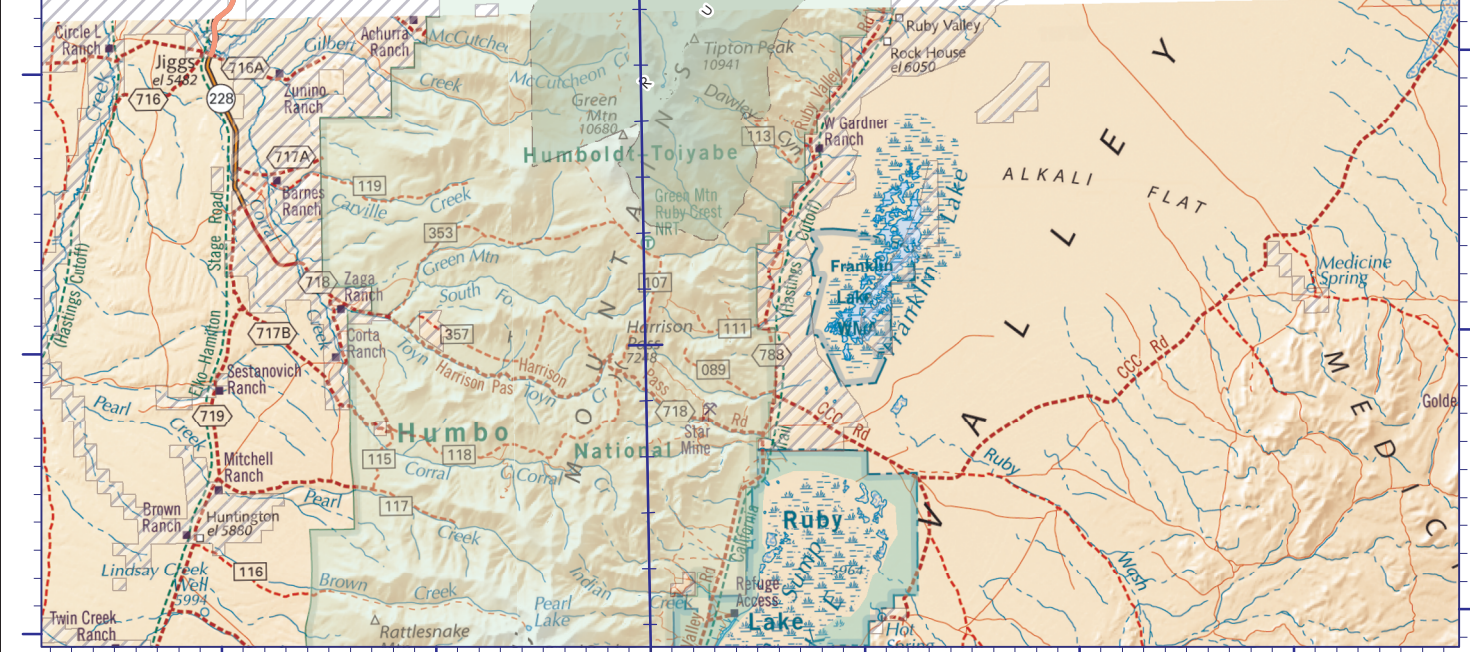


115°30'0"W

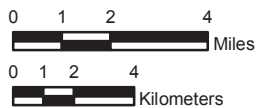
40°30'0"N

40°30'0"N

115°30'0"W



Scale
1:250,000



Quadrangle A2
Page 8

Map prepared by Kyle Ford
2013

Map coordinates are projected in UTM, Zone 11, according to the North American Datum of 1983. Latitude and Longitude grid ticks are shown in blue.



NORTH

