

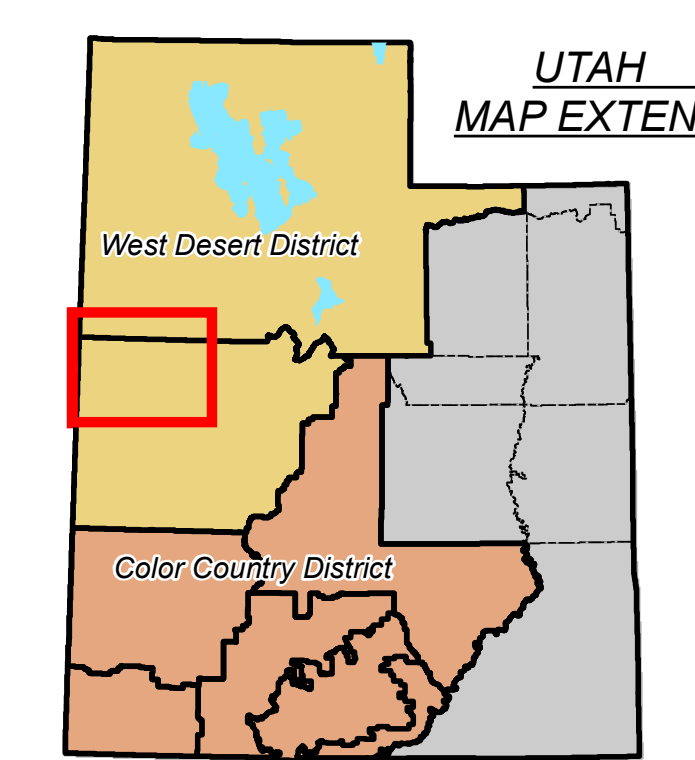
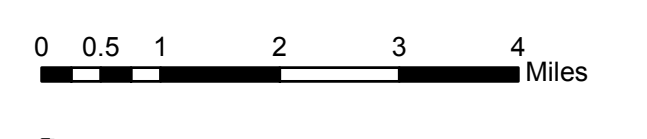
**B L M / WDD
Fish Springs
PDF Map (A1)**

U.S. DEPARTMENT OF THE INTERIOR
BUREAU OF LAND MANAGEMENT



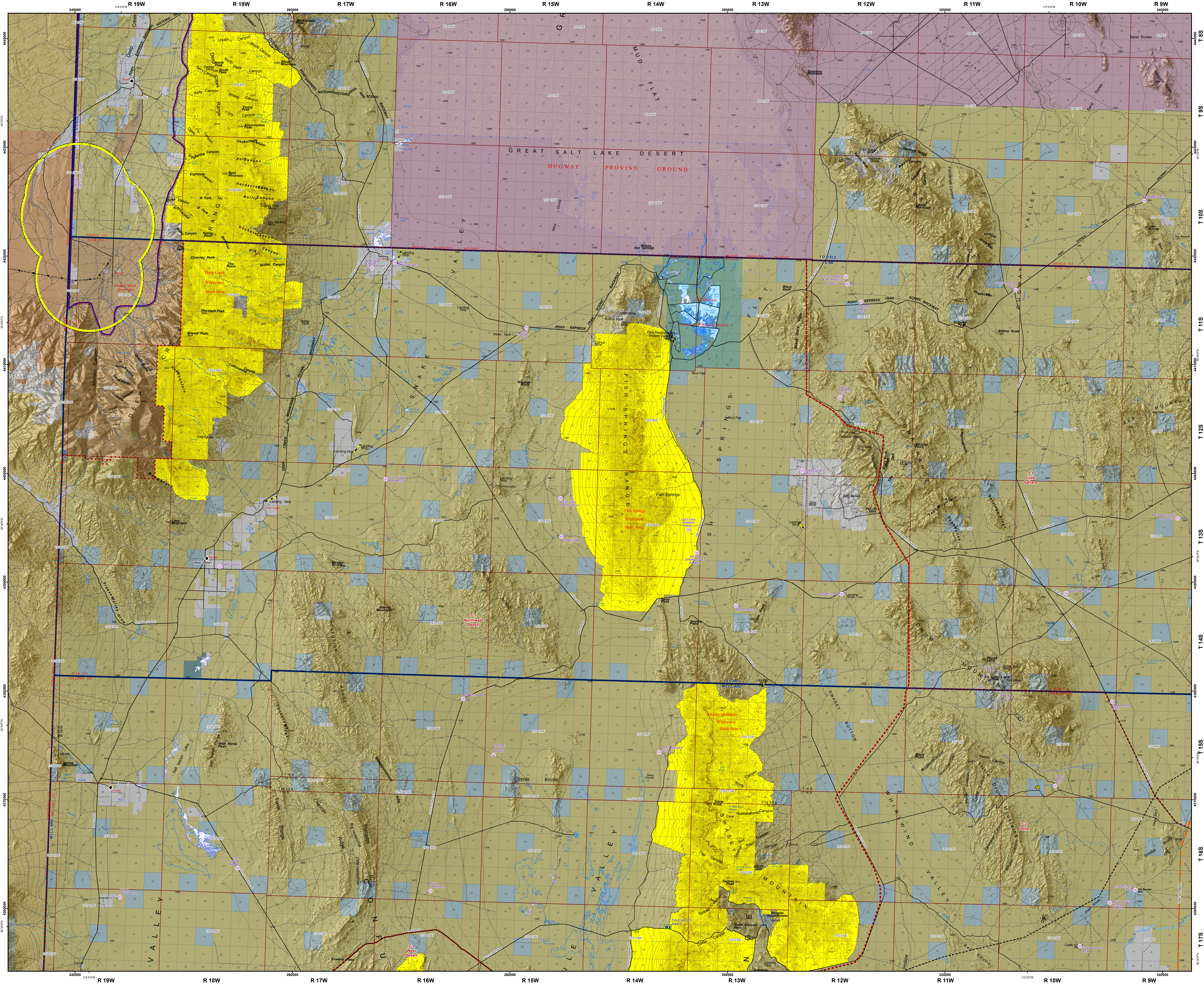
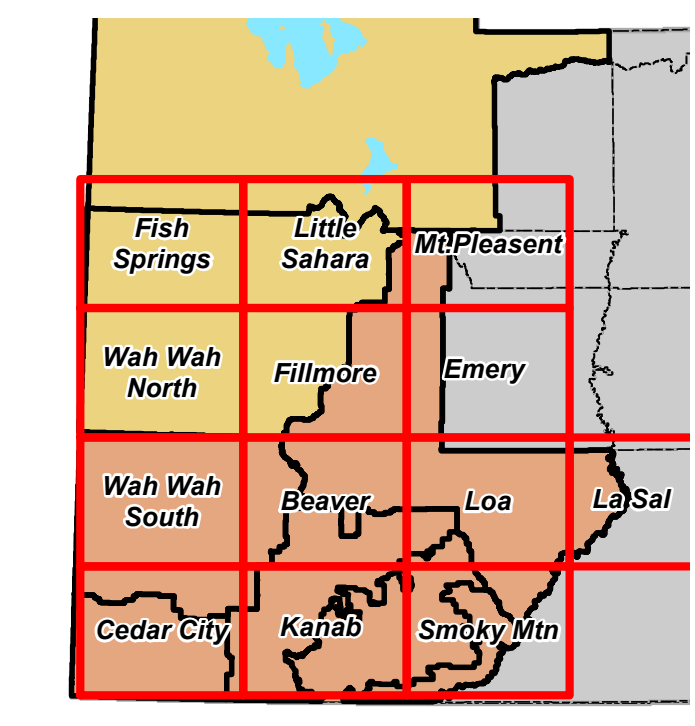
May 02, 2019

1:102,008 1 in = 2 miles



**ADJOINING MAPS
MAP INDEX**

- | | |
|-------------------|-------------------|
| A1. Fish Spring | C1. Wah Wah South |
| A2. Little Sahara | C2. Beaver |
| B1. Wah Wah North | C3. Loa |
| B2. Fillmore | D1. Cedar City |
| B3. Emery | D2. Kanab |
| | D3. Smoky Mtn |



Legend

- Communities at Risk
- FFO_SIPS_Wells
- RAW_RAWS
- ▲ TA_Committees
- TA_Fluorescence Detectors
- IPP_Transmission_Line
- Electrical Lines
- UNEV_Pipeline
- Airport Runway

Roads AGRC

- Major Road
- Minor Road

CARTOCODE

- Core_C_Response_Area_2018
- SAGRL_Line2017_31_Buflor
- Utah Greater Sage Grouse Occupied Habitat
- County Boundary
- Township & Range (PLSS)

Sections (PLSS)

- Section
- Wilderness Study Areas
- Wilderness Study Areas

Land Status

- Bureau of Land Management (BLM)
- Indian Reservation (IR)
- Military Reservations and Corps of Engineers
- Private
- State
- State Wildlife Reserve/Management Area
- US Fish & Wildlife (USFW) National Wildlife Refuge

No warranty is made by the Bureau of Land Management as to the accuracy, reliability, or completeness of these data for individual use or aggregate use with other data. BLM/WS/019/000