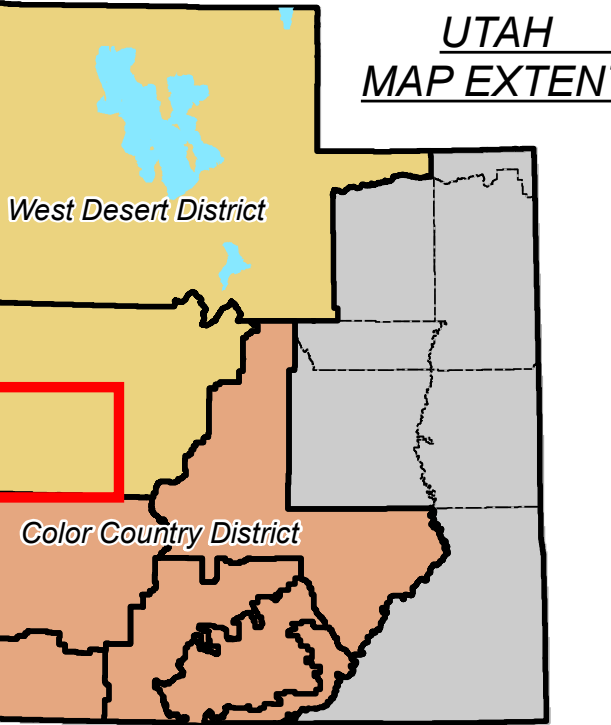
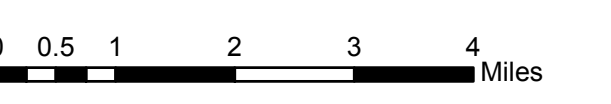


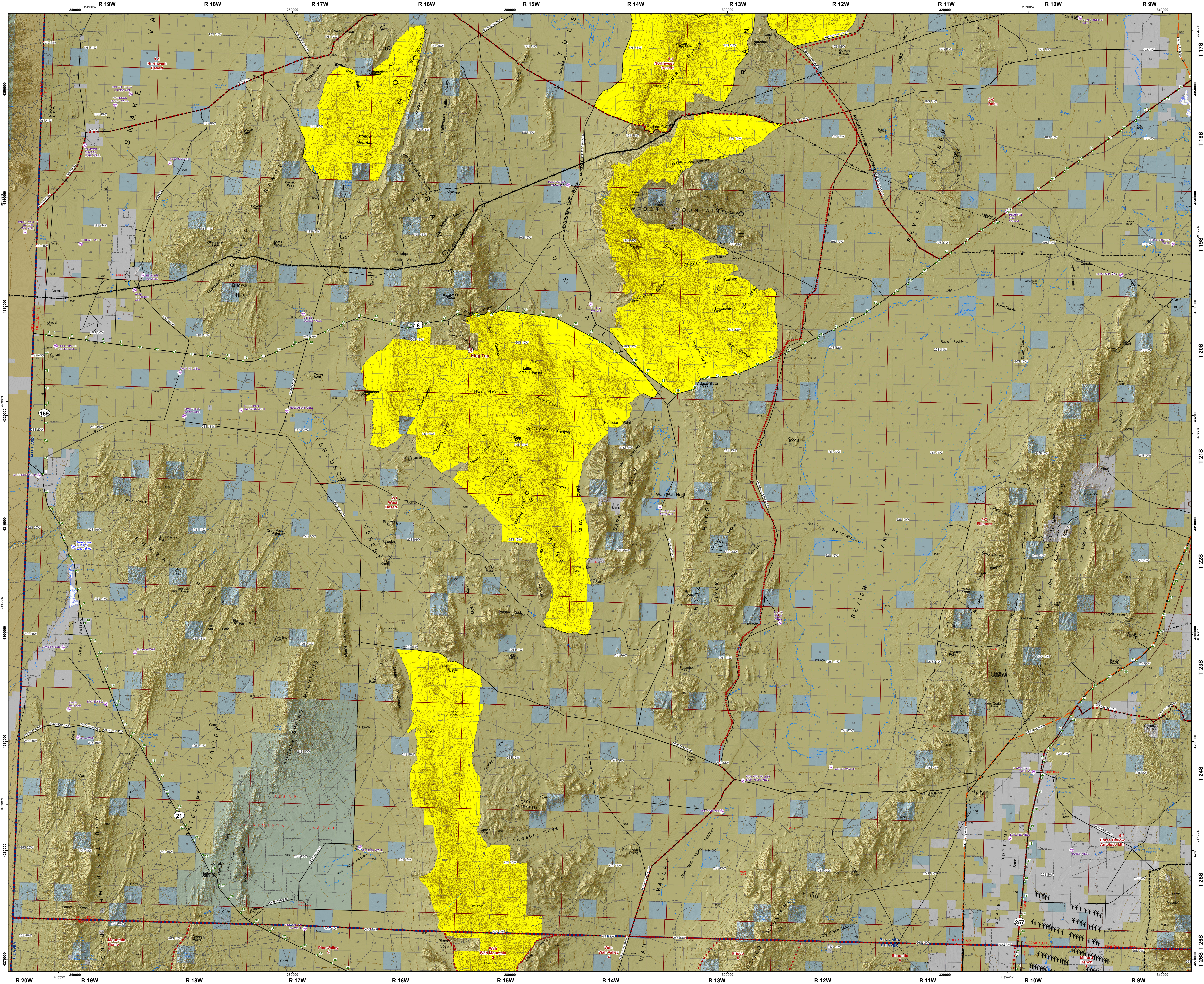
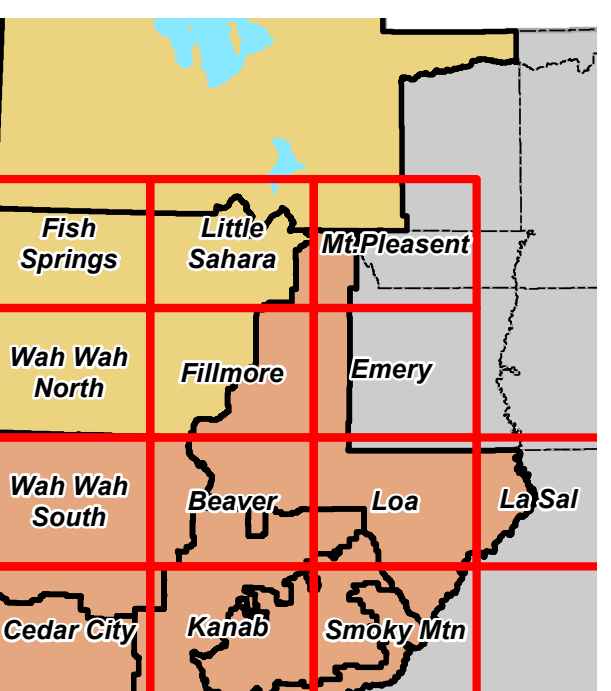
May 02, 2019

1:102,008 1 in = 2 miles



ADJOINING MAPS
MAP INDEX

- A1. Fish Spring
- A2. Little Sahara
- B1. Wah Wah North
- B2. Fillmore
- B3. Emery
- C1. Wah Wah South
- C2. Beaver
- C3. Loa
- D1. Cedar City
- D2. Kanab
- D3. Smoky Mtn



- Mileposts Markers
- Repeater_BLM_UTAH
- FFO_RIPS_Wells
- CCD_Digestes
- FirstWind_MWTC_TurbineLocation
- TA_Commisses
- TA_Flurescence Detectors
- Railroad
- IPP_Transmission_Line
- SRB_Transmission_Line
- Electrical Lines
- UNEV_Pipeline
- KentRiver_Pipeline
- Roads AGRC
- Highway
- Major Road
- Minor Road
- RFIC_Response_Area 2018
- CCIFC_Response_Area 2018
- County Boundary
- Transverse Range (PLSS)
- Sections (PLSS)
- Section
- Wilderness Study Areas
- Wilderness Study Areas
- Land Status
- Private
- State
- US Forest Service (USFS)