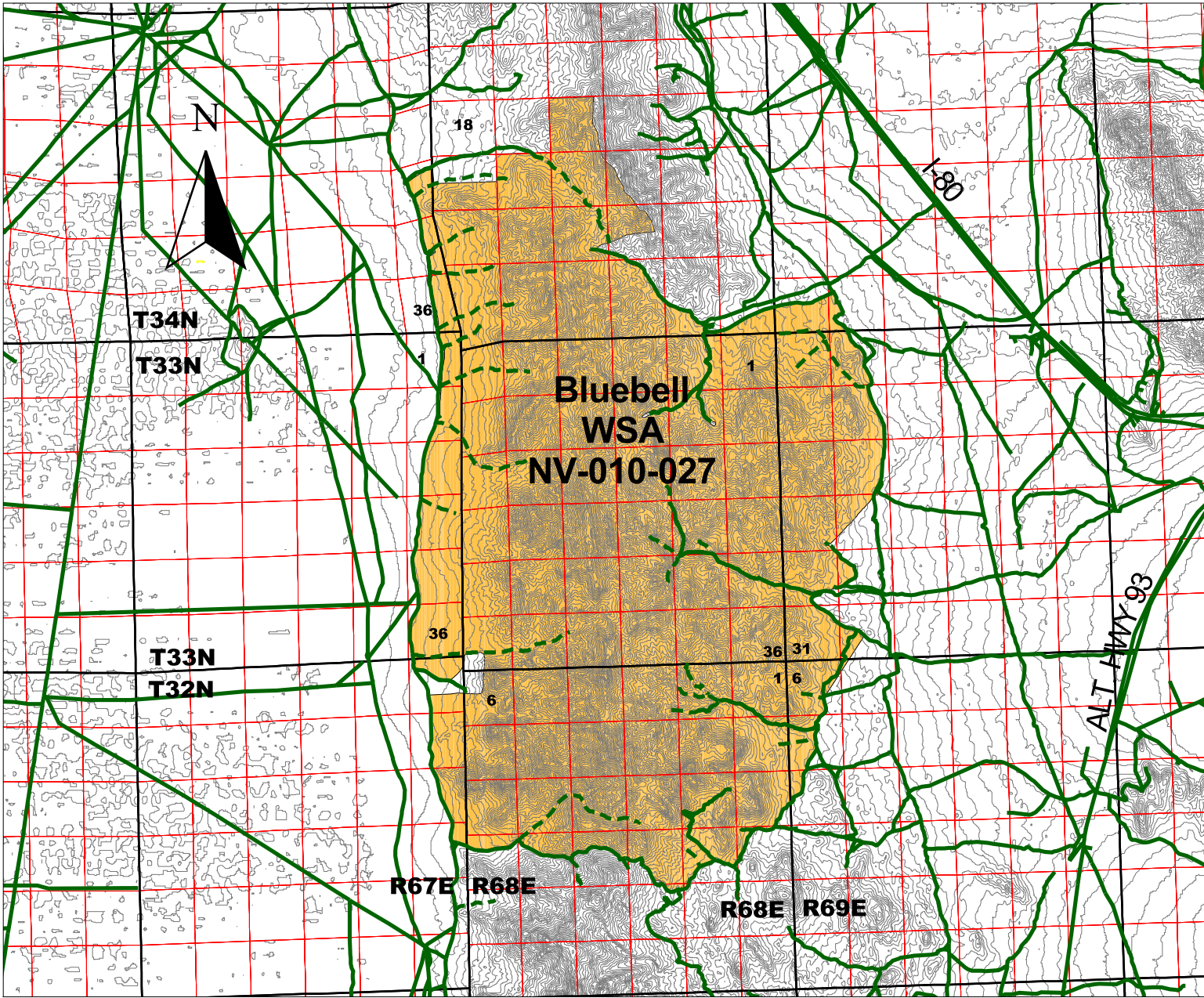





Wilderness Study Area Designated Travel Routes

May 23, 2002

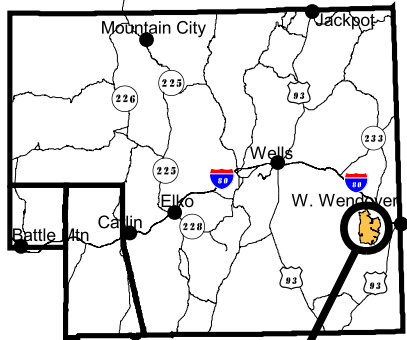


NAD27

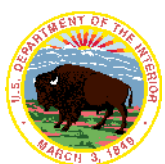
-  **Major Roads**
-  **Inventory Routes (primarily two-track)***
-  **Wilderness Study Area**

* INVENTORY ROUTES MAY HAVE REVEGETATED OR MAY NO LONGER BE DISCERNABLE. PLEASE CONTACT THE ELKO FIELD OFFICE FOR FURTHER INFORMATION ON THOSE INDESCERNABLE ROUTES.

Within the WSA, only the routes shown above are allowable for mechanical transport. All other routes within the WSA are not open to mechanical transport.



WSA LOCATION



UNITED STATES
DEPARTMENT OF THE INTERIOR
BUREAU OF LAND MANAGEMENT
ELKO FIELD OFFICE
3900 E. IDAHO ST.
ELKO, NV 89801
(775) 753-0200



"NO WARRANTY IS MADE BY THE BUREAU OF LAND MANAGEMENT AS TO THE ACCURACY, RELIABILITY, OR COMPLETENESS OF THESE DATA FOR INDIVIDUAL USE OR AGGREGATE USE WITH OTHER DATA."