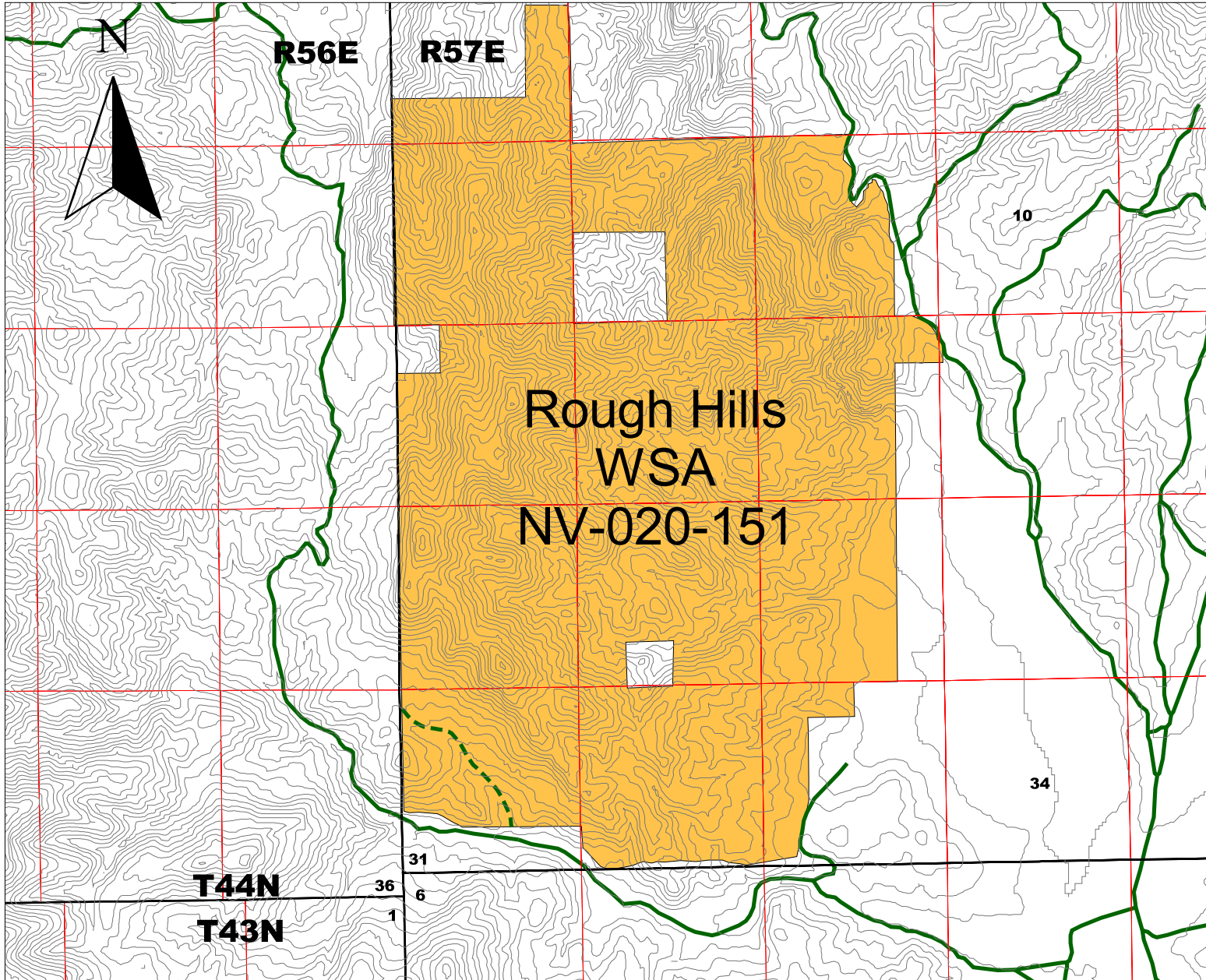





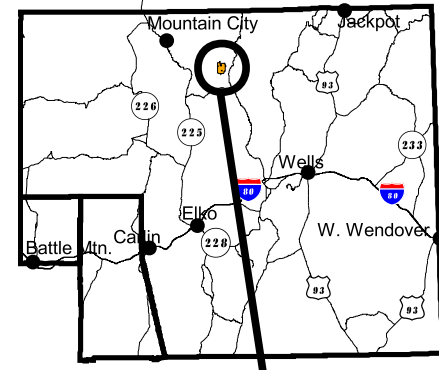
Wilderness Study Area Designated Travel Routes

May 23, 2002



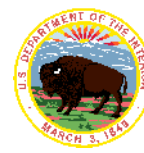
-  **Major Roads**
-  **Inventory Routes (primarily two-track)***
-  **Wilderness Study Area**

*INVENTORY ROUTES MAY HAVE REVEGETATED OR MAY NO LONGER BE DISCERNABLE. PLEASE CONTACT THE ELKO FIELD OFFICE FOR FURTHER INFORMATION ON THOSE INDETERMINABLE ROUTES.



WSA LOCATION

Within the WSA, only the routes shown above are allowable for mechanical transport. All other routes within the WSA are not open to mechanical transport.



UNITED STATES
DEPARTMENT OF THE INTERIOR
BUREAU OF LAND MANAGEMENT
ELKO FIELD OFFICE
3900 E. IDAHO ST.
ELKO, NV 89801
(775) 753-0200

