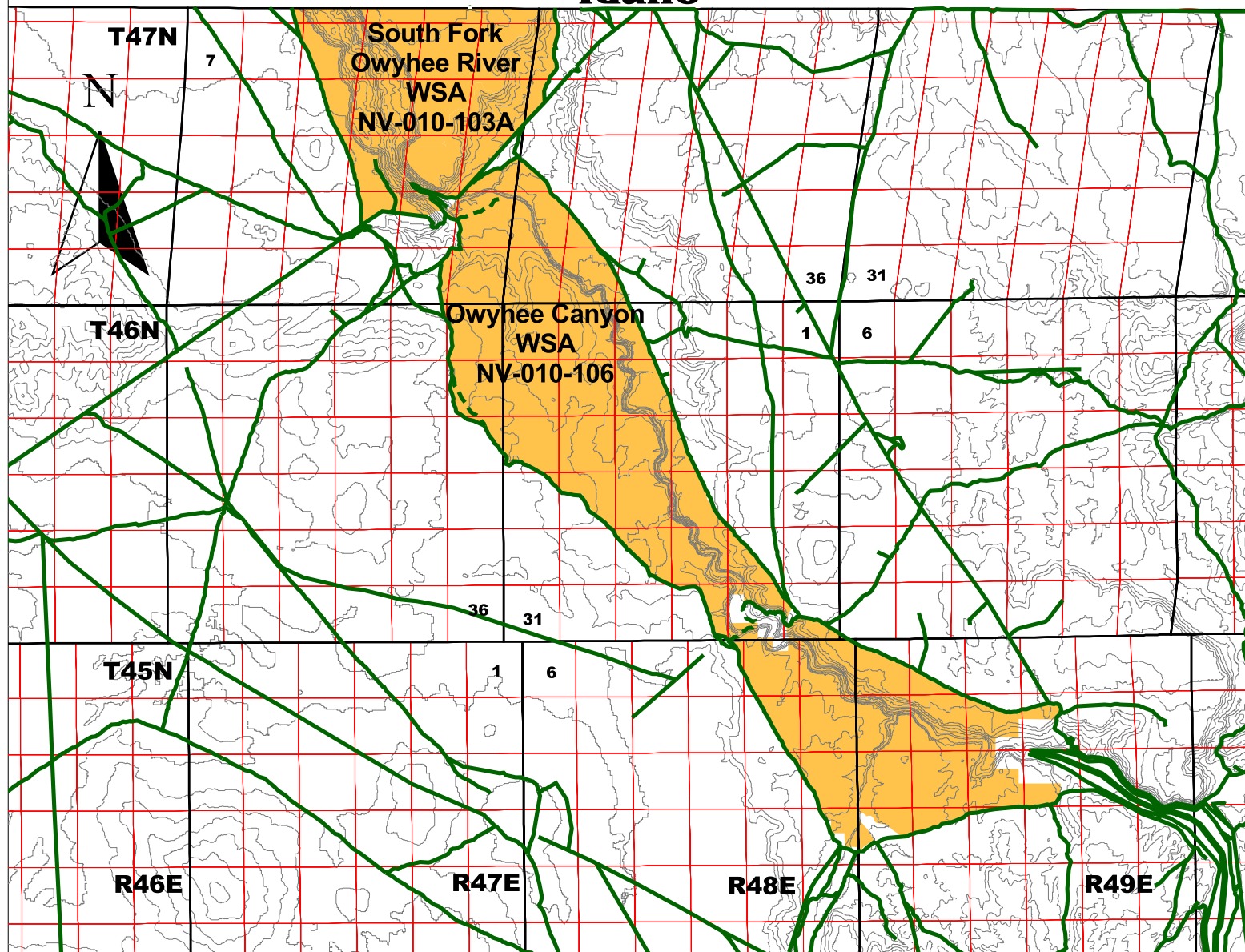




# Wilderness Study Area Designated Travel Routes

May 23, 2002.

## Idaho

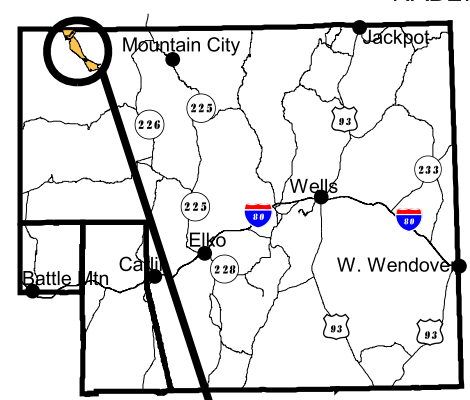


NAD27

-  Major Roads
-  Inventory Routes (primarily two-track)\*
-  Wilderness Study Area

\* INVENTORY ROUTES MAY HAVE REVEGETATED OR MAY NO LONGER BE DISCERNABLE. PLEASE CONTACT THE ELKO FIELD OFFICE FOR FURTHER INFORMATION ON THOSE INDETERMINABLE ROUTES.

*Within the WSA, only the routes shown above are allowable for mechanical transport. All other routes within the WSA are not open to mechanical transport.*



## WSA LOCATION



UNITED STATES  
DEPARTMENT OF THE INTERIOR  
BUREAU OF LAND MANAGEMENT  
ELKO FIELD OFFICE  
3900 E. IDAHO ST.  
ELKO, NV 89801  
(775) 753-0200



"NO WARRANTY IS MADE BY THE BUREAU OF LAND MANAGEMENT AS TO THE ACCURACY, RELIABILITY, OR COMPLETENESS OF THESE DATA FOR INDIVIDUAL USE OR AGGREGATE USE WITH OTHER DATA."