

# Little Sahara (A2)

January 10, 2023



U.S. DEPARTMENT OF THE INTERIOR  
BUREAU OF LAND MANAGEMENT  
COLOR COUNTY DISTRICT

1:110,000

1 inch = 2 miles



## EXTENT



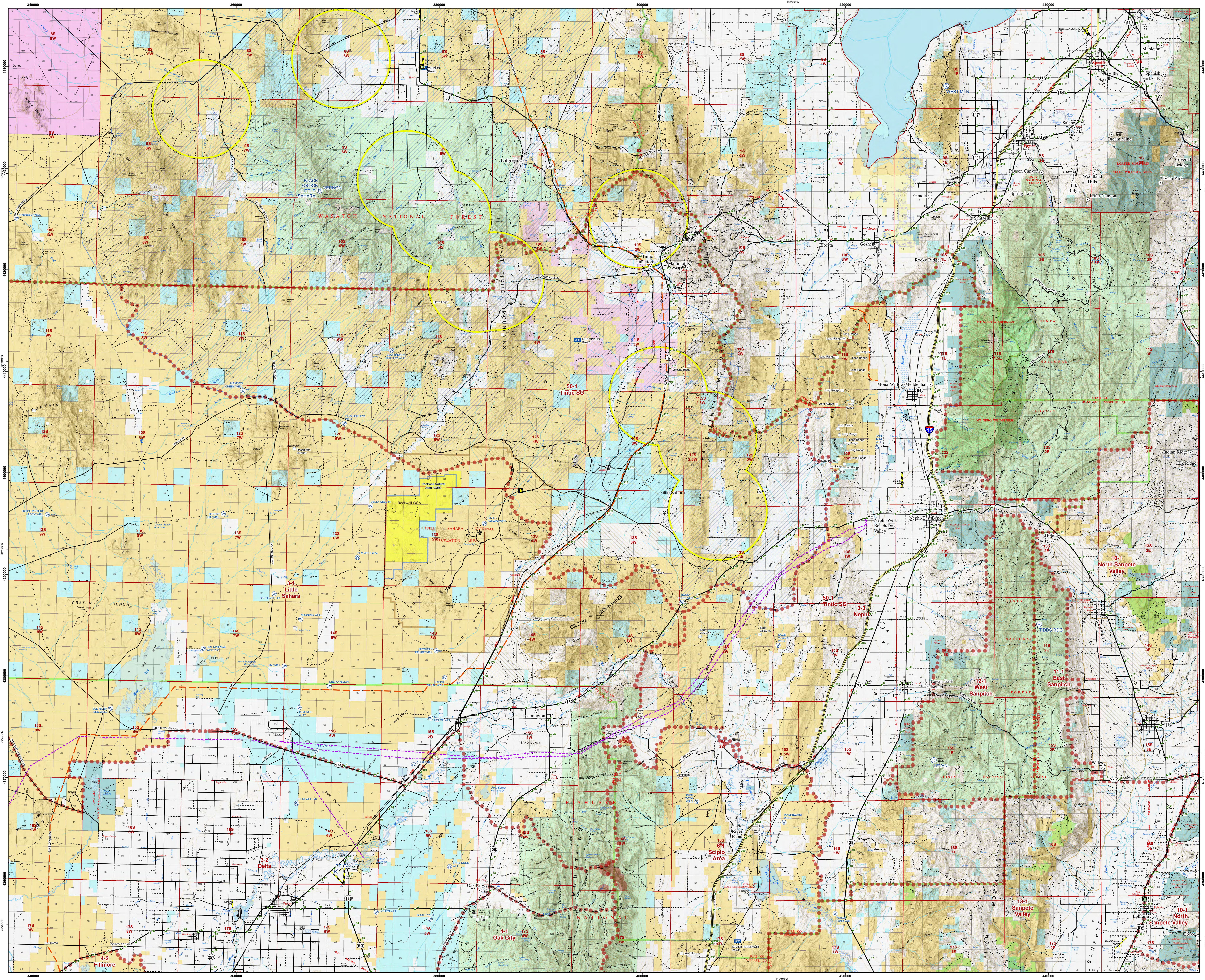
## INDEX

- A1. Fish Spring
- A2. Little Sahara
- A3. Mt. Pleasant
- B1. Wah Wah North
- B2. Fillmore
- B3. Emery
- C1. Wah Wah South
- C2. Beaver
- C3. Loa
- C4. La Sal
- D1. Cedar City
- D2. Kanab
- D3. Smoky Mountain

|   |               |               |              |
|---|---------------|---------------|--------------|
| A | Fish Springs  | Little Sahara | Mt. Pleasant |
| B | Wah Wah North | Fillmore      | Emery        |
| C | Wah Wah South | Beaver        | Loa La Sal   |
| D | Cedar City    | Kanab         | Smoky Mtn.   |
|   | 1             | 2             | 3 4          |

## LEGEND

- Community at Risk
  - Mile Marker
  - BLM Fire Facility
  - USFS Fire Facility
  - Repeater
  - Remote Area Weather Station (RAWS)
  - Response Area
  - Aerial Fire Retardant Avoidance
  - Airport Runway
  - Well
  - Guzzler
  - TA Commitee
  - Transmission Line
  - Electrical Line
  - Pipeline
  - Greater Sage-Grouse - 2018 Lek (3 Mile Buffer)
  - Greater Sage-Grouse - General Habitat Mgmt. Area
  - Greater Sage-Grouse - Priority Habitat Mgmt. Area
  - Completed Vegetation Treatment (VTR)
- ### Roads
- Interstate
  - Highway
  - Major Road
  - Minor Road
  - Railroad
- ### County Boundary
- County Boundary
- ### Little Sahara Recreation Area
- Area of Critical Environmental Concern (ACEC)
  - Wilderness Study Area (WSA)
- ### Land Status
- Bureau of Land Management (BLM)
  - Bankhead-Jones Land Use Lands
  - Bureau of Reclamation
  - Military & Corps of Engineers
  - Private
  - State
  - State Parks and Recreation
  - State Wildlife Reserve/Mgmt. Area
  - US Forest Service (USFS)
  - USFS Wilderness Area



No warranty is made by the Bureau of Land Management as to the accuracy, reliability, or completeness of these data for individual use or aggregate use with other data.