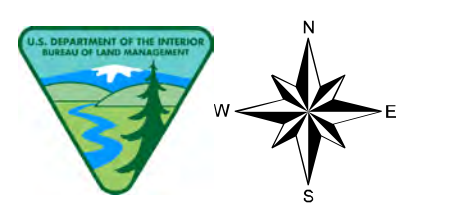


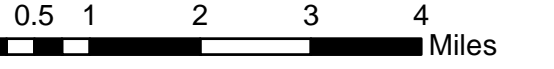
# Wah Wah North (B1)

January 10, 2023

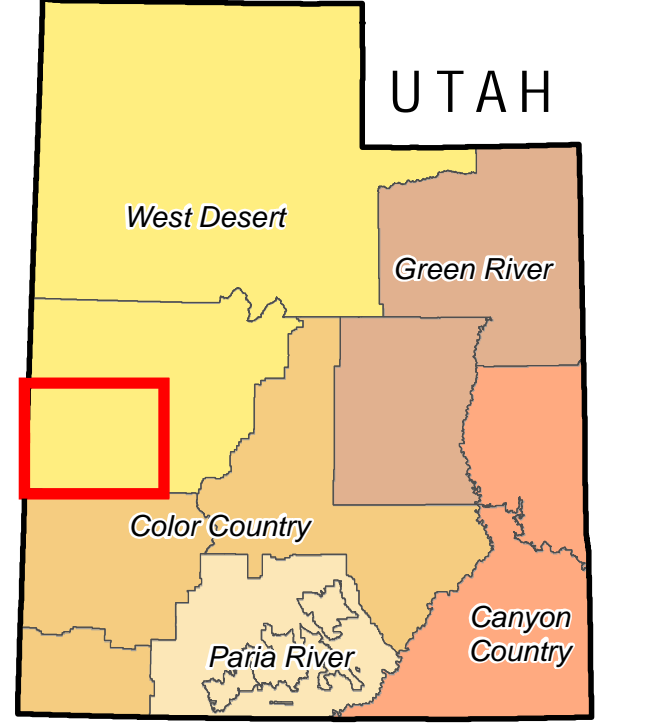


U.S. DEPARTMENT OF THE INTERIOR  
BUREAU OF LAND MANAGEMENT  
COLOR COUNTY DISTRICT

1:110,000  
1 inch = 2 miles

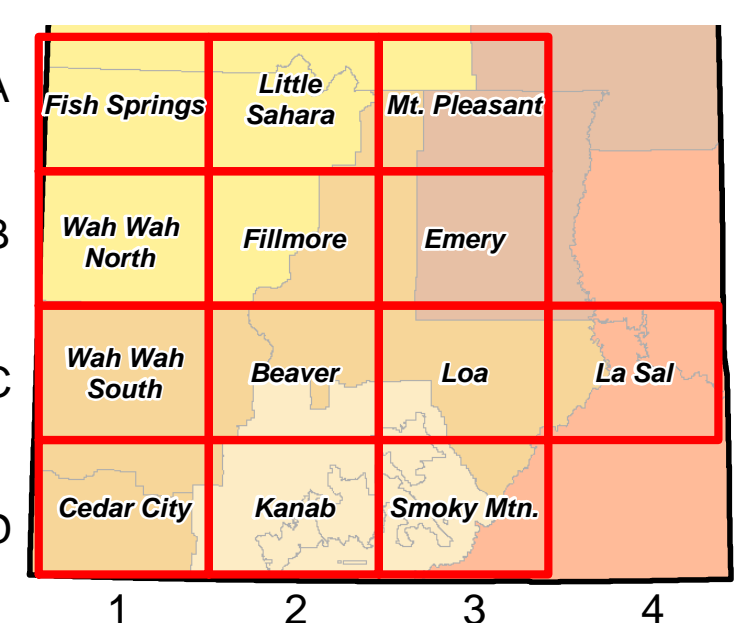


### EXTENT



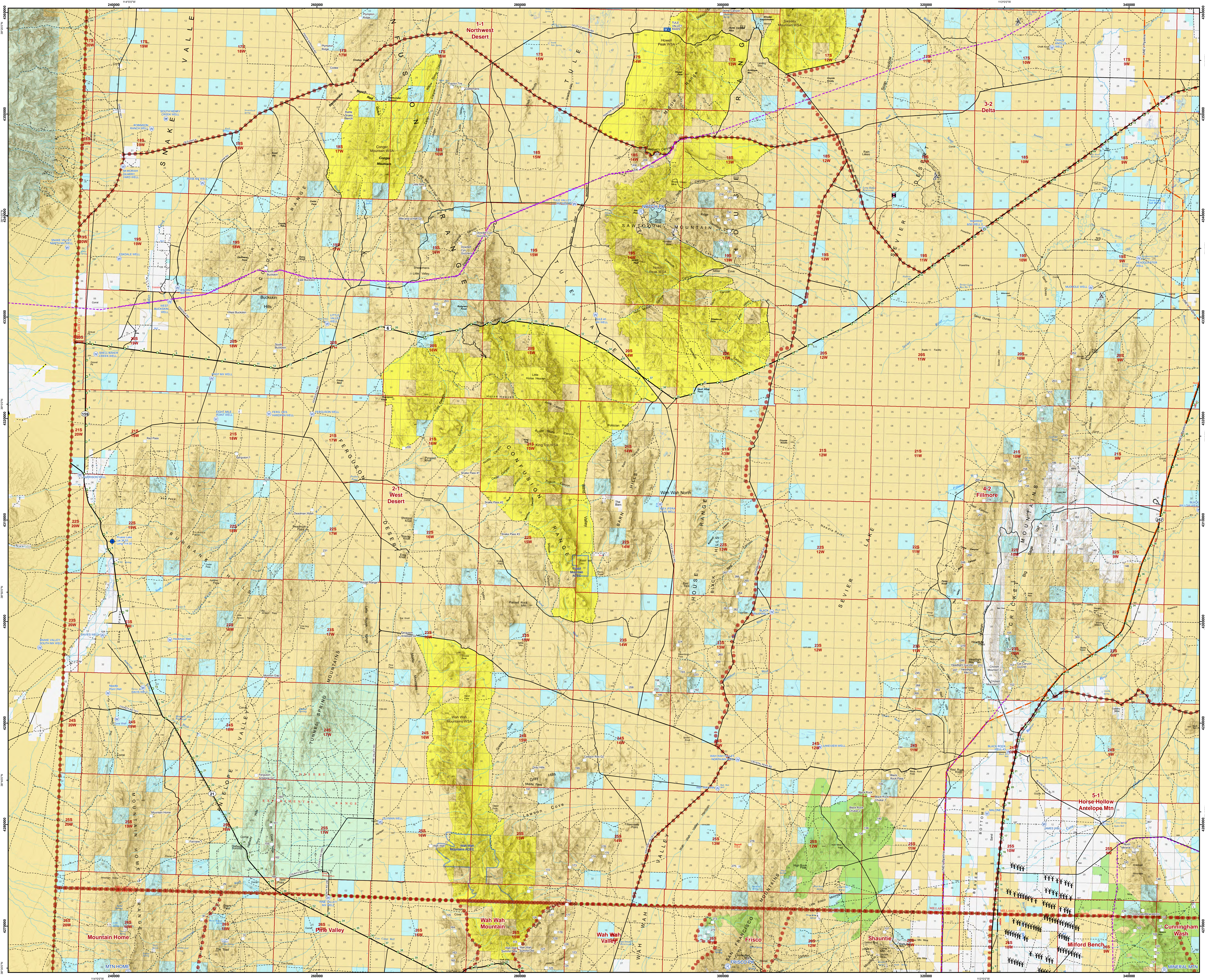
### INDEX

- A1. Fish Spring
- A2. Little Sahara
- A3. Mt. Pleasant
- B1. Wah Wah North
- B2. Fillmore
- B3. Emery
- C1. Wah Wah South
- C2. Beaver
- C3. Loa
- C4. La Sal
- D1. Cedar City
- D2. Kanab
- D3. Smoky Mountain



### LEGEND

- Mile Marker
- Repeater
- Dip Site
- Remote Area Weather Station (RAWS)
- Response Area
- Airport Runway
- Well
- Guzzler
- Wind Turbine
- TA Comm site
- TA Fluorescence Detector
- Transmission Line
- Electrical Line
- Pipeline
- Completed Vegetation Treatment (VTRT)
- Roads
  - Interstate
  - Highway
  - Major Road
  - Minor Road
  - Railroad
- County Boundary
- Area of Critical Environmental Concern (ACEC)
- Wilderness Study Area (WSA)
- Land Status
  - Bureau of Land Management (BLM)
  - Private
  - State
  - US Forest Service (USFS)



No warranty is made by the Bureau of Land Management as to the accuracy, reliability, or completeness of these data for individual use or aggregate use with other data.