

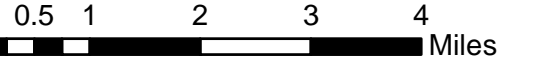
**Fillmore (B2)**

January 10, 2023

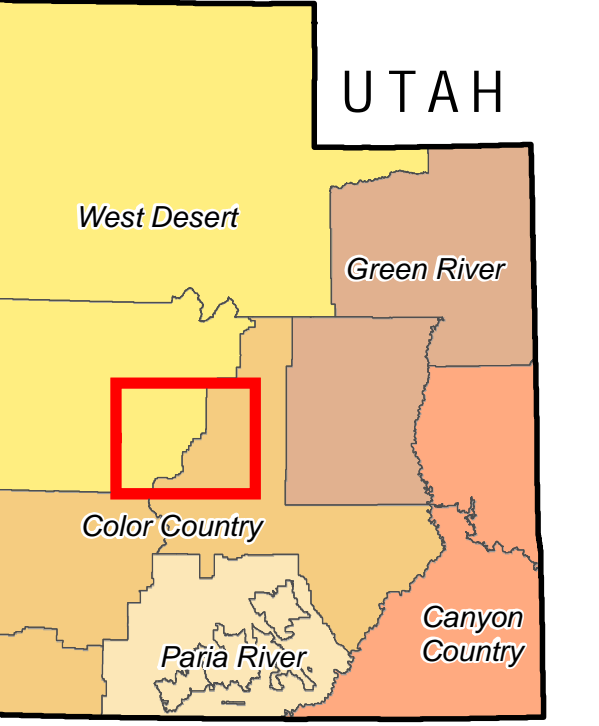


U.S. DEPARTMENT OF THE INTERIOR  
BUREAU OF LAND MANAGEMENT  
COLOR COUNTY DISTRICT

1:110,000  
1 inch = 2 miles



**EXTENT**



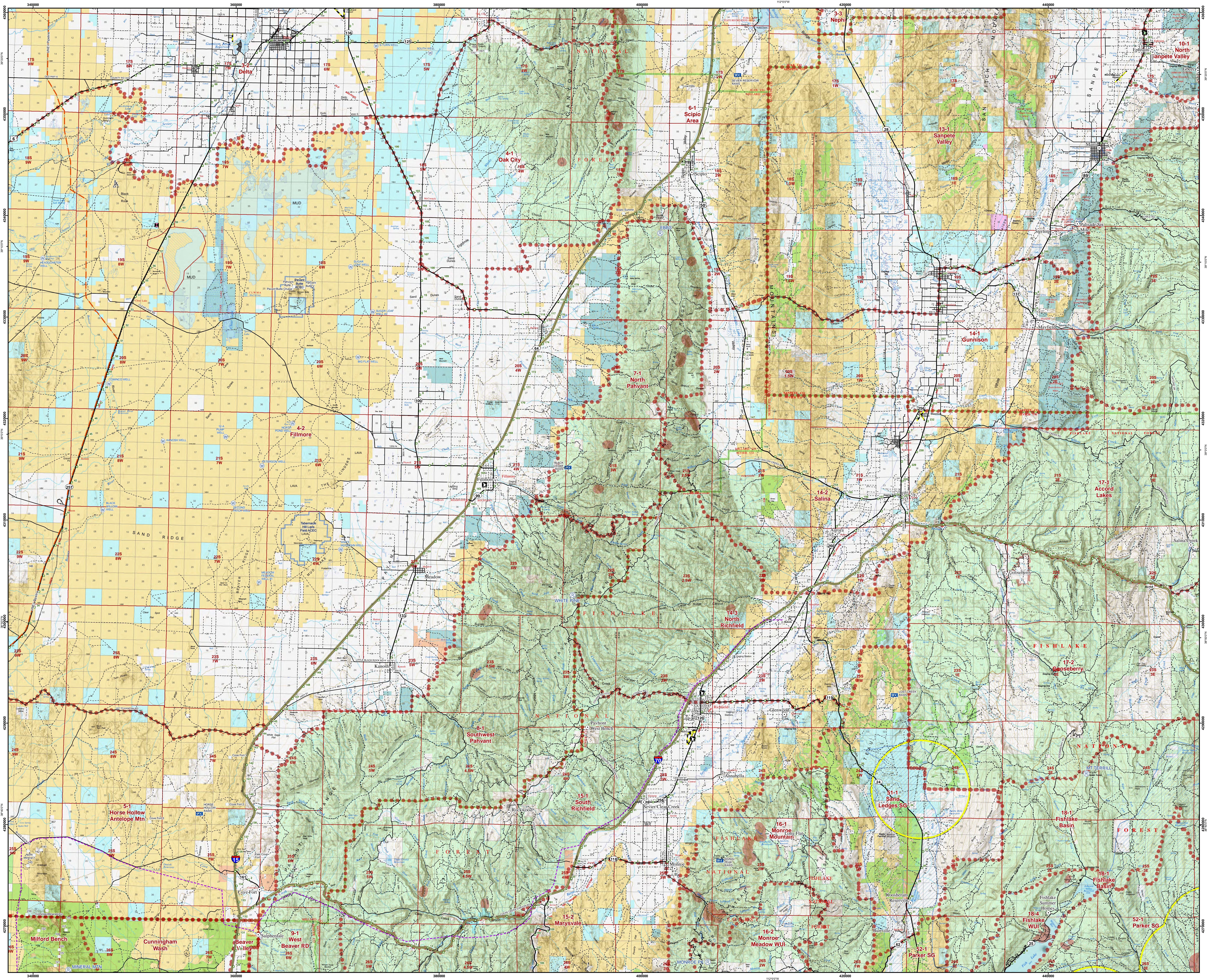
**INDEX**

- A1. Fish Spring
- A2. Little Sahara
- A3. Mt. Pleasant
- B1. Wah Wah North
- B2. Fillmore
- B3. Emery
- C1. Wah Wah South
- C2. Beaver
- C3. Loa
- C4. La Sal
- D1. Cedar City
- D2. Kanab
- D3. Smoky Mountain

A	Fish Springs	Little Sahara	Mt. Pleasant
B	Wah Wah North	Fillmore	Emery
C	Wah Wah South	Beaver	Loa La Sal
D	Cedar City	Kanab	Smoky Mtn.
	1	2	3 4

**LEGEND**

- Community at Risk
  - Mile Marker
  - Interagency Fire Facility
  - USFS Fire Facility
  - Repeater
  - Remote Area Weather Station (RAWS)
  - Response Area
  - Aerial Fire Retardant Avoidance
  - Airport Runway
  - Well
  - Guzzler
  - TA Comsite
  - TA Fluorescence Detector
  - Transmission Line
  - Electrical Line
  - Pipeline
  - Greater Sage-Grouse - 2018 Lek (3 Mile Buffer)
  - Greater Sage-Grouse - General Habitat Mgmt. Area
  - Greater Sage-Grouse - Priority Habitat Mgmt. Area
  - Completed Vegetation Treatment (VTRT)
- Roads**
- Interstate
  - Highway
  - Major Road
  - Minor Road
  - Railroad
- County Boundary**
- Area of Critical Environmental Concern (ACEC)
- Land Status**
- Bureau of Land Management (BLM)
  - Indian Reservation (IR)
  - Military & Corps of Engineers
  - Private
  - State
  - State Parks and Recreation
  - State Wildlife Reserve/Mgmt. Area
  - US Forest Service (USFS)



No warranty is made by the Bureau of Land Management as to the accuracy, reliability, or completeness of these data for individual use or aggregate use with other data.