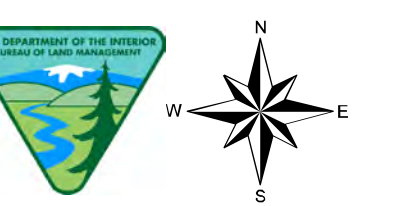


Emery (B3)

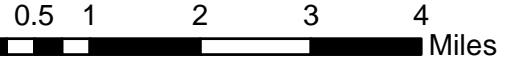
January 10, 2023



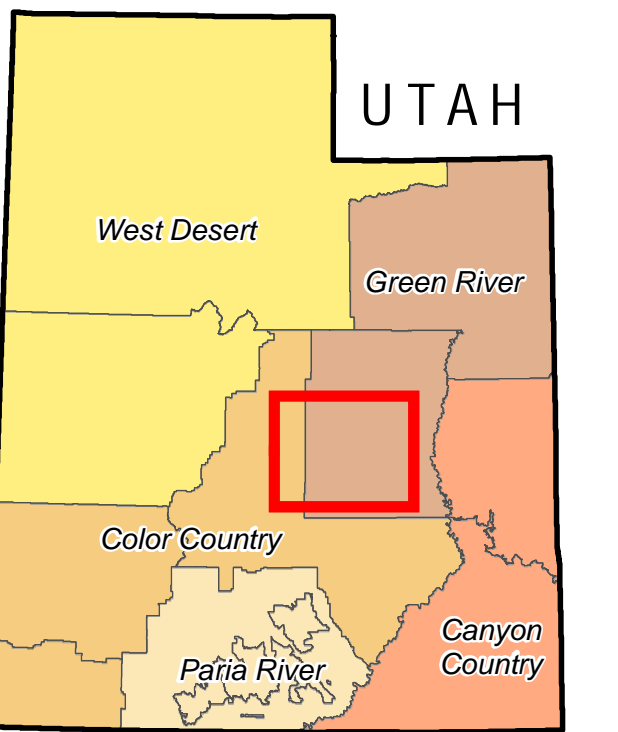
U.S. DEPARTMENT OF THE INTERIOR
BUREAU OF LAND MANAGEMENT
COLOR COUNTY DISTRICT

1:110,000

1 inch = 2 miles



EXTENT



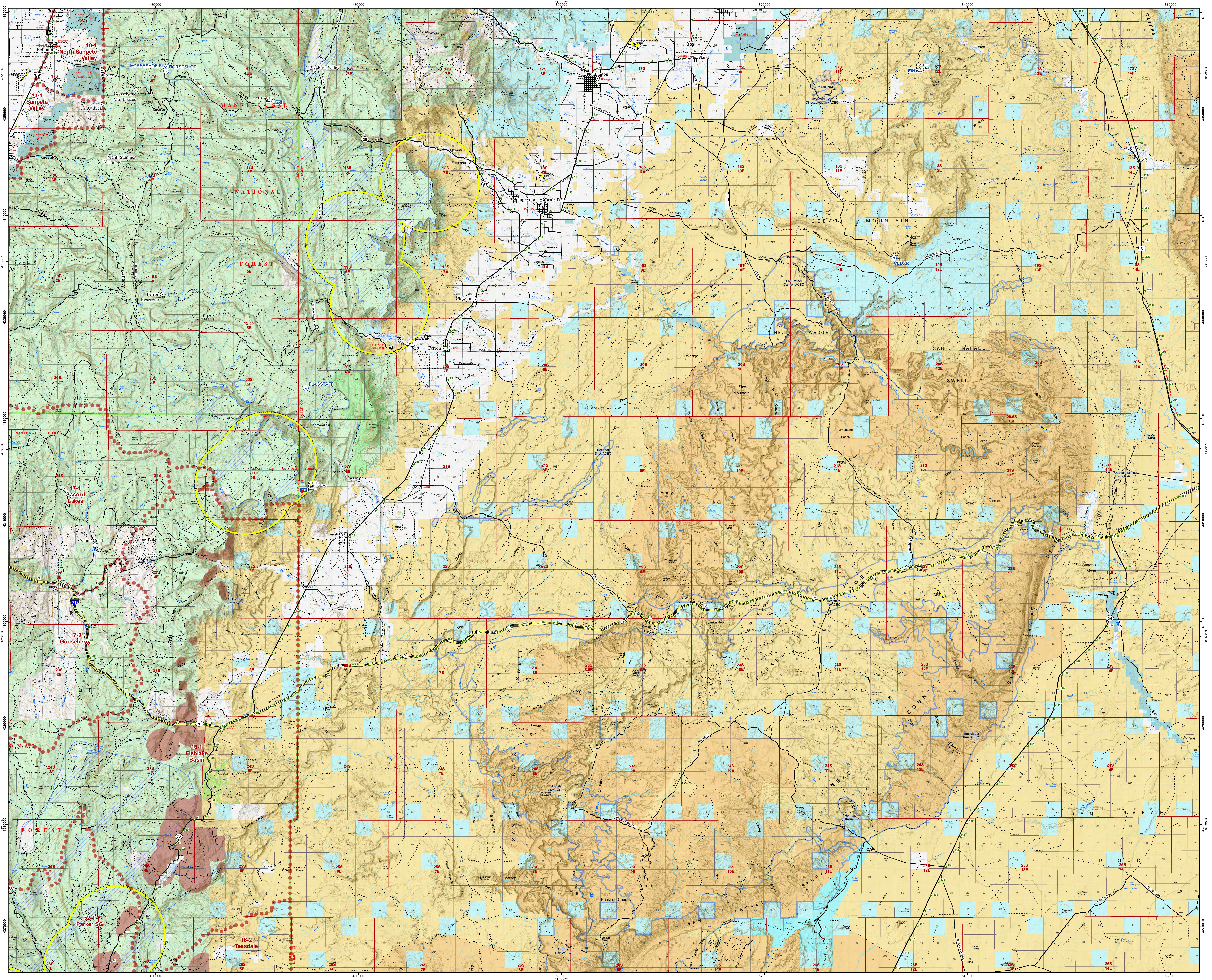
INDEX

- A1. Fish Spring
- A2. Little Sahara
- A3. Mt. Pleasant
- B1. Wah Wah North
- B2. Fillmore
- B3. Emery
- C1. Wah Wah South
- C2. Beaver
- C3. Loa
- C4. La Sal
- D1. Cedar City
- D2. Kanab
- D3. Smoky Mountain

A	Fish Springs	Little Sahara	Mt. Pleasant
B	Wah Wah North	Fillmore	Emery
C	Wah Wah South	Beaver	Loa
D	Cedar City	Kanab	Smoky Mtn.
	1	2	3

LEGEND

- Community at Risk
- Mile Marker
- USFS Fire Facility
- Repeater
- Remote Area Weather Station (RAWS)
- Response Area
- Aerial Fire Retardant Avoidance
- Airport Runway
- Transmission Line
- Electrical Line
- Pipeline
- Greater Sage-Grouse - 2018 Lek (3 Mile Buffer)
- Greater Sage-Grouse - General Habitat Mgmt. Area
- Greater Sage-Grouse - Priority Habitat Mgmt. Area
- Completed Vegetation Treatment (VTRT)
- Roads
 - Interstate
 - Highway
 - Major Road
 - Minor Road
 - Railroad
- County Boundary
- Area of Critical Environmental Concern (ACEC)
- National Monument
- Land Status
 - BLM Wilderness Area
 - Bureau of Land Management (BLM)
 - Private
 - State
 - State Parks and Recreation
 - State Wildlife Reserve/Mgmt. Area
 - US Forest Service (USFS)
 - USFS Wilderness Area



No warranty is made by the Bureau of Land Management as to the accuracy, reliability, or completeness of these data for individual use or aggregate use with other data.