

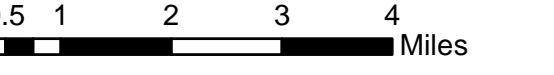
Beaver (C2)

January 10, 2023

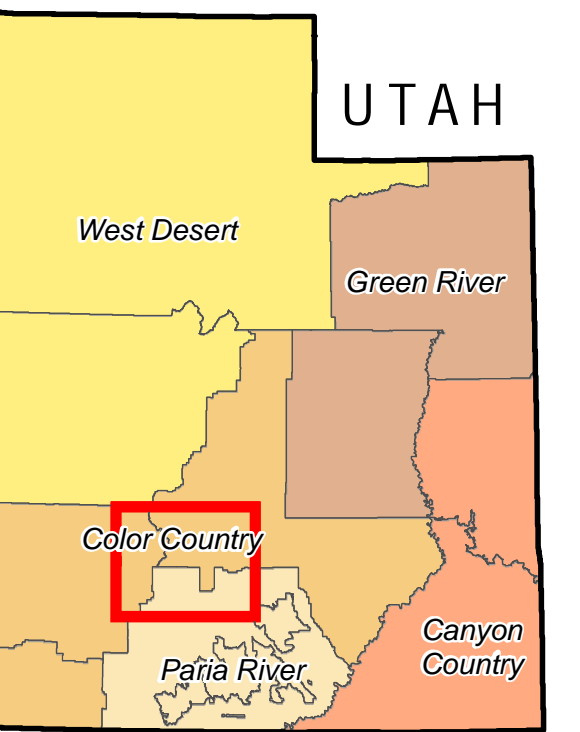


U.S. DEPARTMENT OF THE INTERIOR
BUREAU OF LAND MANAGEMENT
COLOR COUNTY DISTRICT

1:110,000
1 inch = 2 miles



EXTENT



INDEX

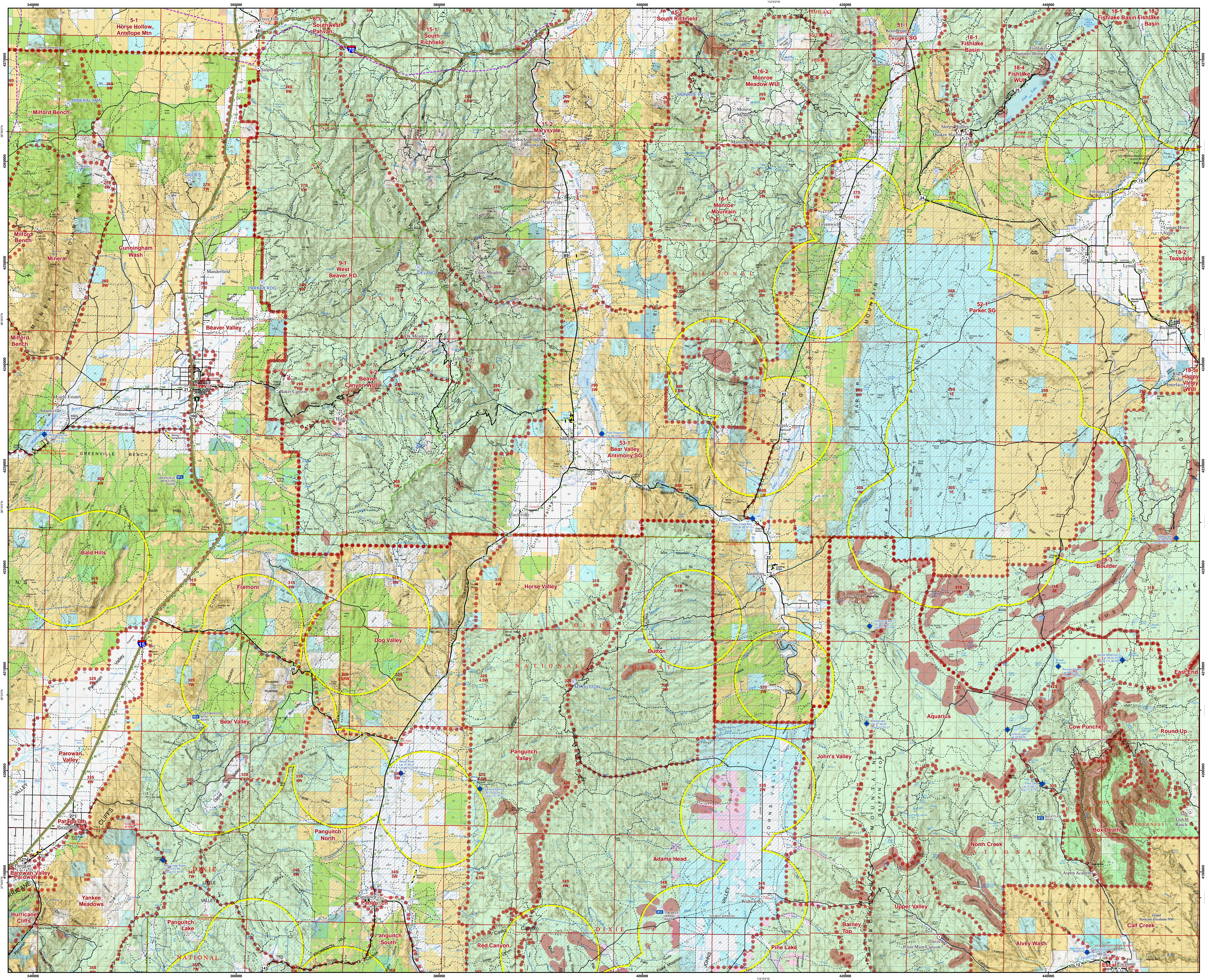
- A1. Fish Spring C1. Wah Wah South
- A2. Little Sahara C2. Beaver
- A3. Mt. Pleasant C3. Loa
- C4. La Sal

- B1. Wah Wah North D1. Cedar City
- B2. Fillmore D2. Kanab
- B3. Emery D3. Smoky Mountain

A	Fish Springs	Little Sahara	Mt. Pleasant	
B	Wah Wah North	Fillmore	Emery	
C	Wah Wah South	Beaver	Loa	La Sal
D	Cedar City	Kanab	Smoky Mtn.	
	1	2	3	4

LEGEND

- Community at Risk
- Mile Marker
- USFS Fire Facility
- Repeater
- Dipsite
- Remote Area Weather Station (RAWS)
- Response Area
- Aerial Fire Retardant Avoidance
- Airport Runway
- Guzzler
- Transmission Line
- Electrical Line
- Pipeline
- Greater Sage-Grouse - 2018 Lek (3 Mile Buffer)
- Greater Sage-Grouse - Priority Habitat Mgmt. Area
- Completed Vegetation Treatment (VTR)
- Roads
- Interstate
- Highway
- Major Road
- Minor Road
- County Boundary
- National Monument
- Land Status
- Bureau of Land Management (BLM)
- Bankhead-Jones Land Use Lands
- Indian Reservation (IR)
- Private
- State
- State Parks and Recreation
- State Wildlife Reserve/Mgmt. Area
- US Forest Service (USFS)
- USFS Wilderness Area



No warranty is made by the Bureau of Land Management as to the accuracy, reliability, or completeness of these data for individual use or aggregate use with other data.