

Kanab (D2)

January 10, 2023



U.S. DEPARTMENT OF THE INTERIOR
BUREAU OF LAND MANAGEMENT

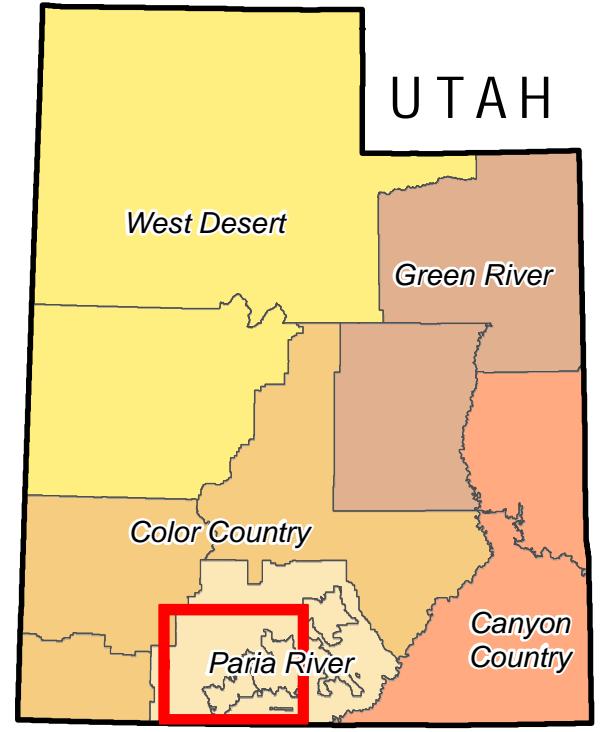
COLORADO DISTRICT

1:110,000

1 inch = 2 miles

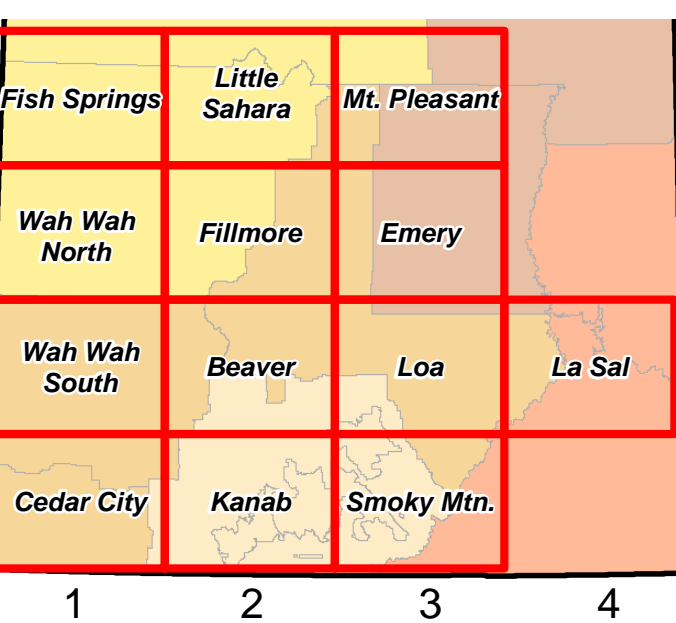


EXTENT



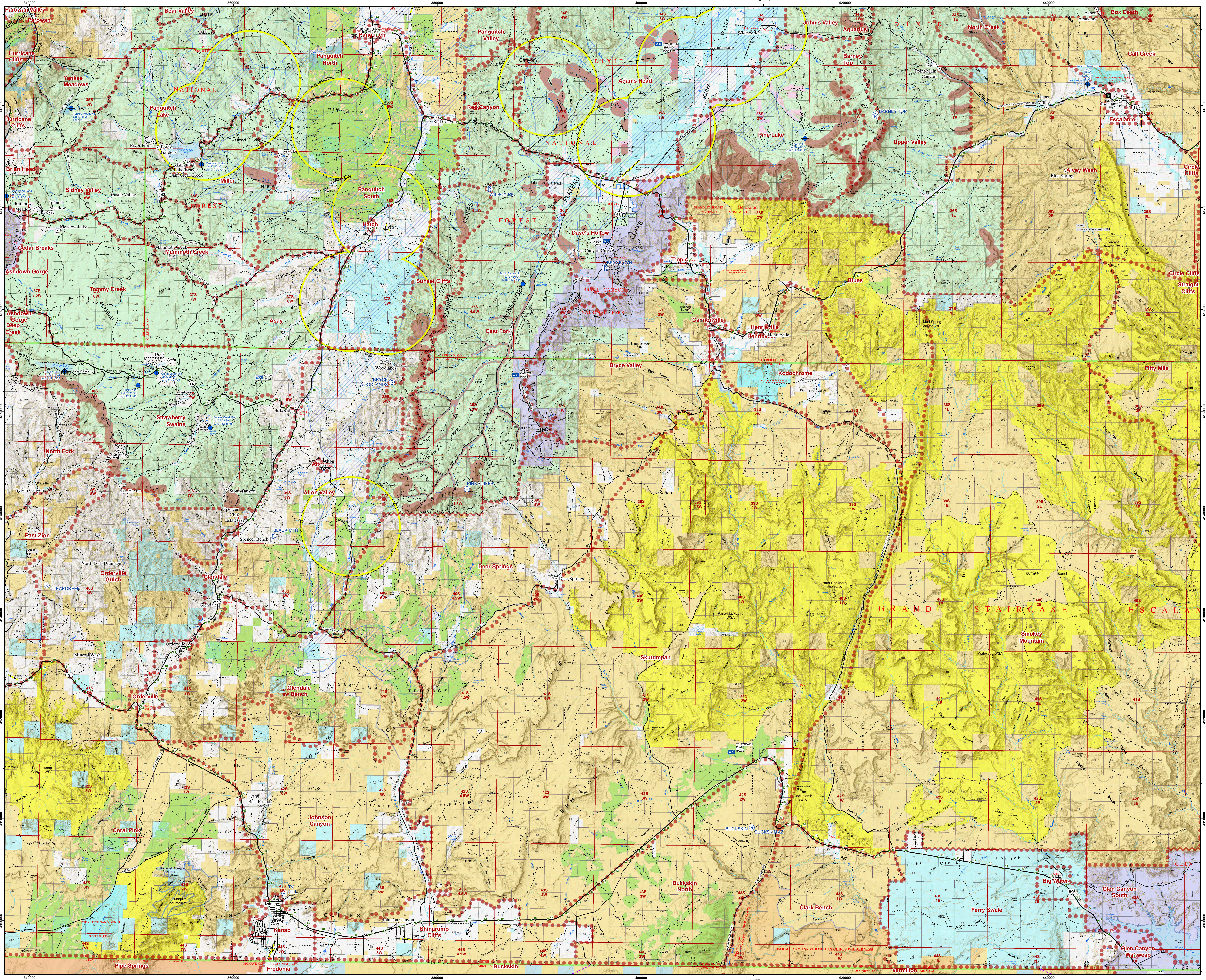
INDEX

- A1. Fish Spring
- A2. Little Sahara
- A3. Mt. Pleasant
- B1. Wah Wah North
- B2. Filmore
- B3. Emery
- C1. Wah Wah South
- C2. Beaver
- C3. Loa
- C4. La Sal
- D1. Cedar City
- D2. Kanab
- D3. Smoky Mountain



LEGEND

- Community at Risk
- Mile Marker
- BLM Fire Facility
- USFS Fire Facility
- Repeater
- Dipsite
- Remote Area Weather Station (RAWS)
- Response Area
- Aerial Fire Retardant Avoidance
- Airport Runway
- Transmission Line
- Electrical Line
- Pipeline
- Greater Sage-Grouse - 2018 Lek (3 Mile Buffer)
- Greater Sage-Grouse - Priority Habitat Mgmt. Area
- Completed Vegetation Treatment (VTRT)
- Roads
 - Interstate
 - Highway
 - Major Road
 - Minor Road
- County Boundary
- Area of Critical Environmental Concern (ACEC)
- National Monument
- Wilderness Study Area (WSA)
- Land Status
 - BLM Wilderness Area
 - Bureau of Land Management (BLM)
 - Bankhead-Jones Land Use Lands
 - National Park Service (NPS)
 - Private
 - State
 - State Parks and Recreation
 - State Wildlife Reserve/Mgmt. Area
 - US Forest Service (USFS)
 - USFS Wilderness Area



No warranty is made by the Bureau of Land Management as to the accuracy, reliability, or completeness of these data for individual use or aggregate use with other data.