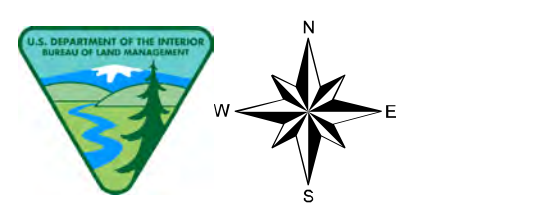


Smoky Mtn. (D3)

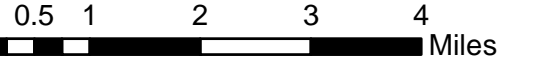
January 10, 2023



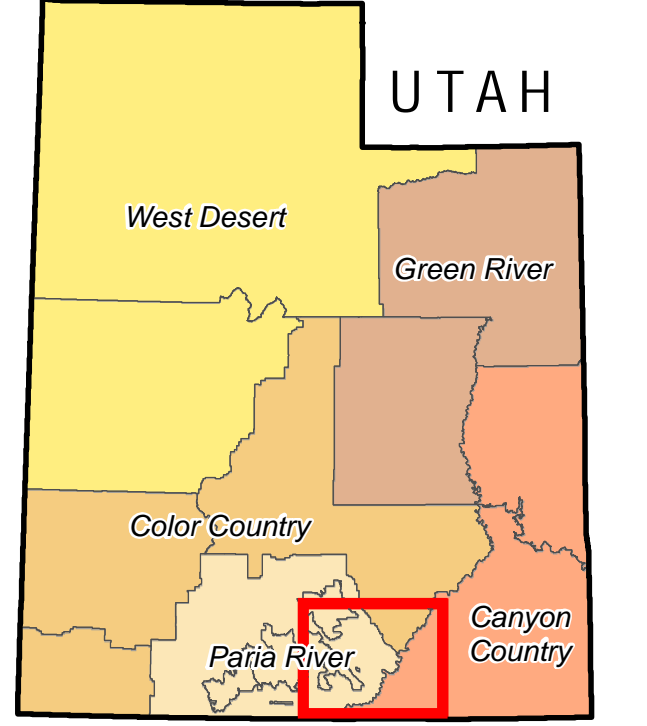
U.S. DEPARTMENT OF THE INTERIOR
BUREAU OF LAND MANAGEMENT
COLOR COUNTRY DISTRICT

1:110,000

1 inch = 2 miles



EXTENT



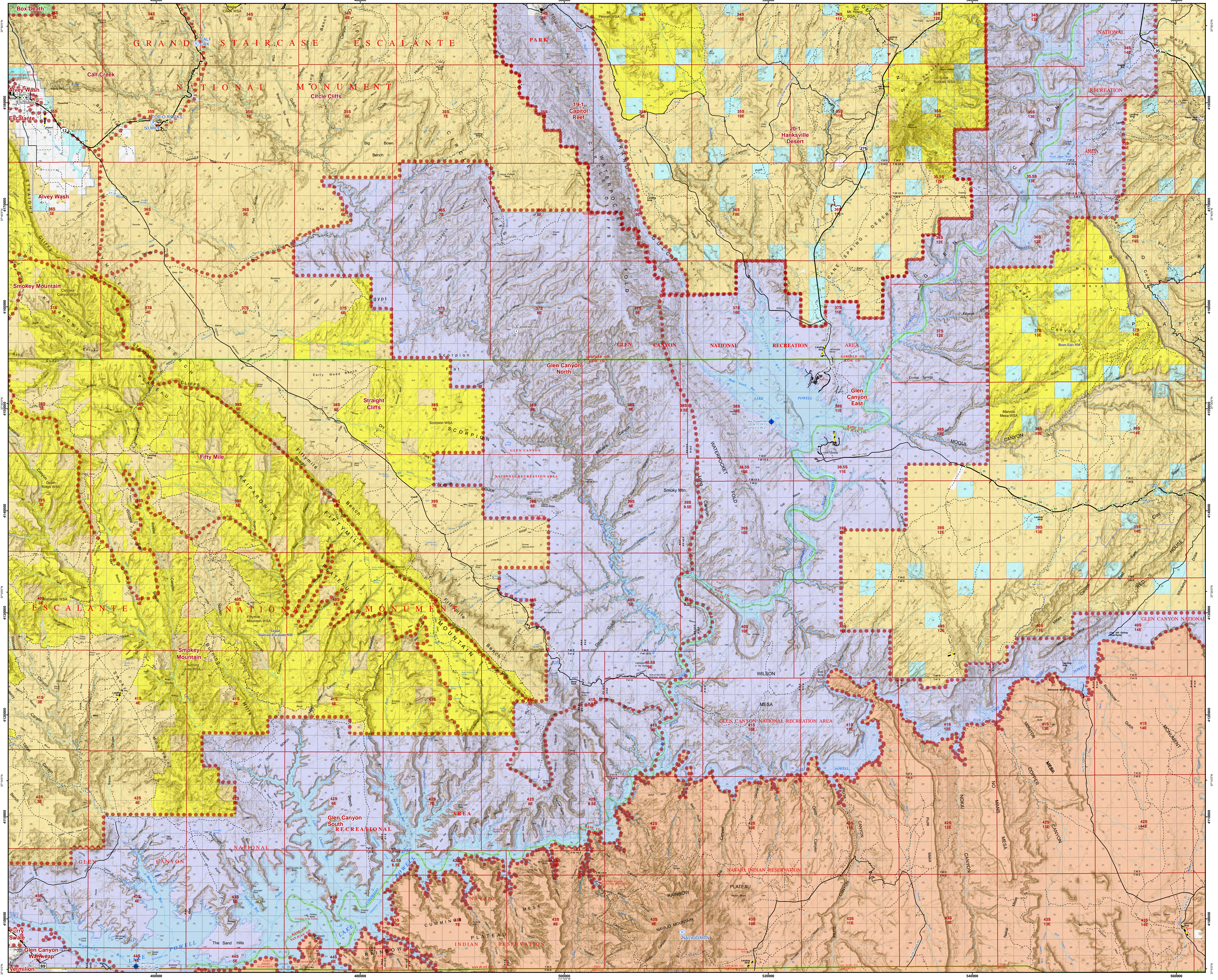
INDEX

- A1. Fish Spring
- A2. Little Sahara
- A3. Mt. Pleasant
- B1. Wah Wah North
- B2. Fillmore
- B3. Emery
- C1. Wah Wah South
- C2. Beaver
- C3. Loa
- C4. La Sal
- D1. Cedar City
- D2. Kanab
- D3. Smoky Mountain

A	Fish Springs	Little Sahara	Mt. Pleasant	
B	Wah Wah North	Fillmore	Emery	
C	Wah Wah South	Beaver	Loa	La Sal
D	Cedar City	Kanab	Smoky Mtn.	
	1	2	3	4

LEGEND

- Community at Risk
- Mile Marker
- USFS Fire Facility
- Repeater
- Dipsite
- Response Area
- Aerial Fire Retardant Avoidance
- Airport Runway
- Transmission Line
- Electrical Line
- Pipeline
- Roads
 - Interstate
 - Highway
 - Major Road
 - Minor Road
- County Boundary
- National Monument
- Wilderness Study Area (WSA)
- Land Status
 - Bureau of Land Management (BLM)
 - Indian Reservation (IR)
 - National Park Service (NPS)
 - Private
 - State
 - State Parks and Recreation
 - US Forest Service (USFS)
 - USFS Wilderness Area



No warranty is made by the Bureau of Land Management as to the accuracy, reliability, or completeness of these data for individual use or aggregate use with other data.