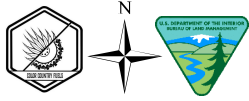


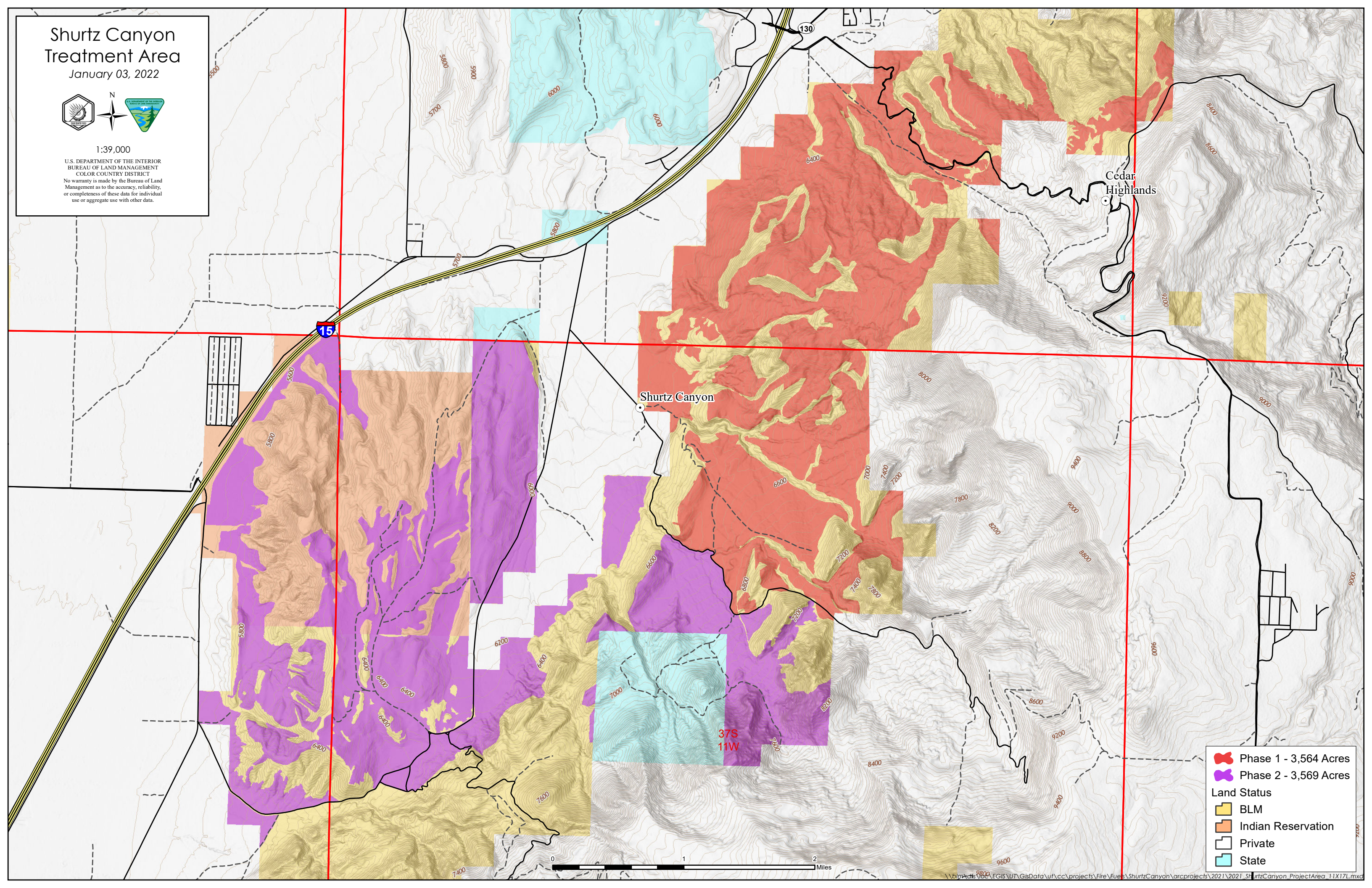
Shurtz Canyon Treatment Area

January 03, 2022



1:39,000

U.S. DEPARTMENT OF THE INTERIOR
BUREAU OF LAND MANAGEMENT
COLOR COUNTRY DISTRICT
No warranty is made by the Bureau of Land Management as to the accuracy, reliability, or completeness of these data for individual use or aggregate use with other data.



Phase 1 - 3,564 Acres
Phase 2 - 3,569 Acres

Land Status

- BLM
- Indian Reservation
- Private
- State