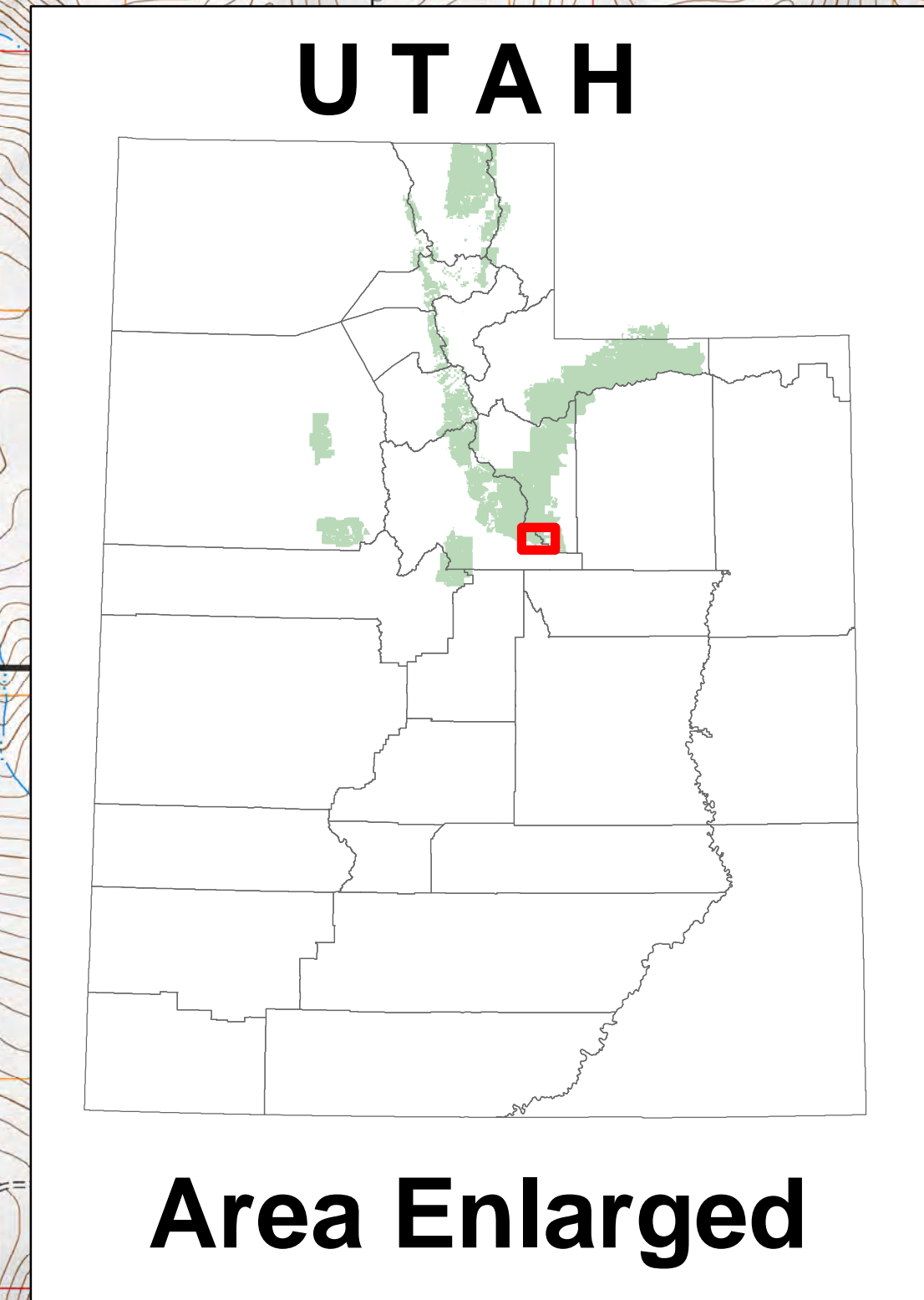
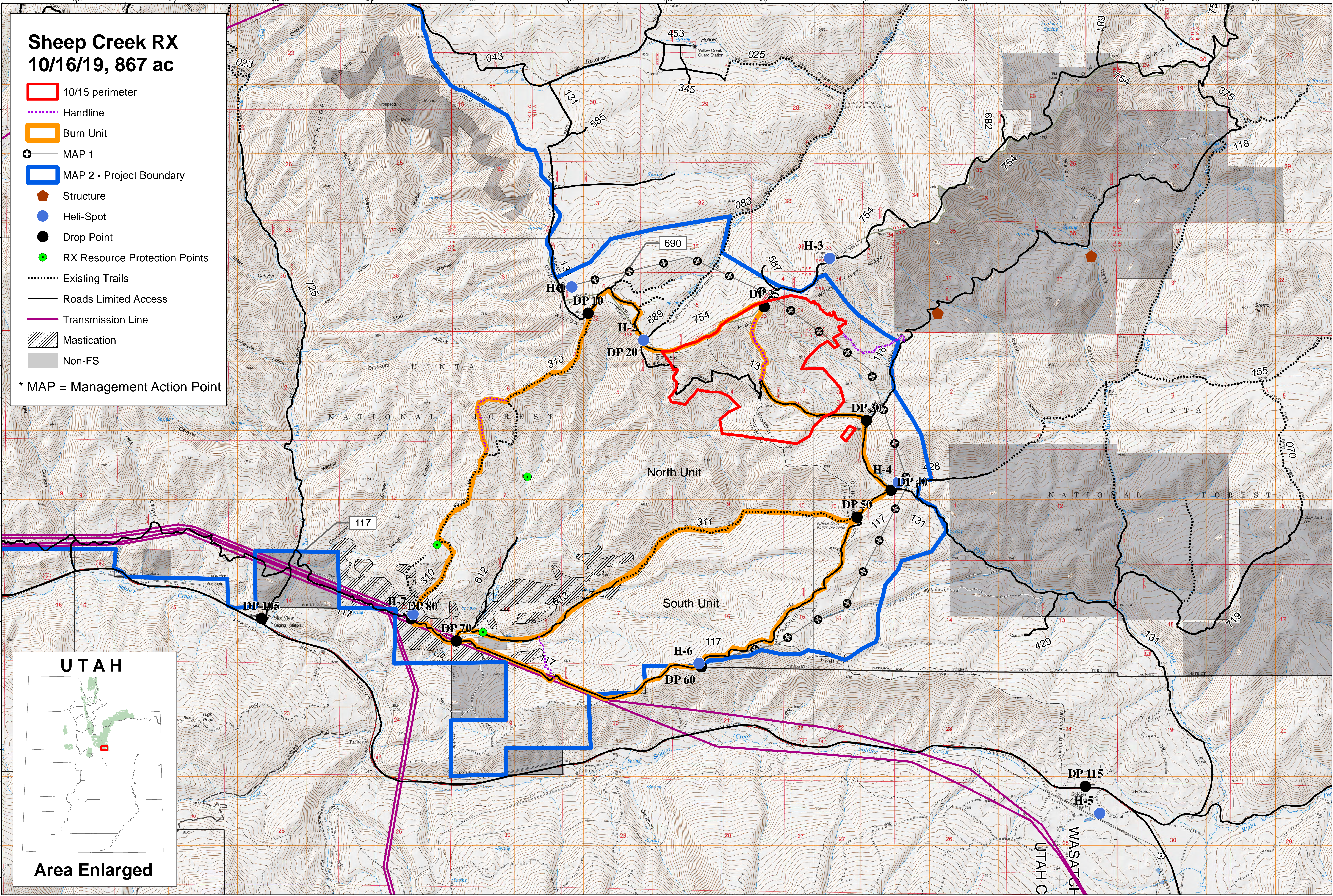


Sheep Creek RX 10/16/19, 867 ac

- 10/15 perimeter
- Handline
- Burn Unit
- MAP 1
- MAP 2 - Project Boundary
- Structure
- Heli-Spot
- Drop Point
- RX Resource Protection Points
- Existing Trails
- Roads Limited Access
- Transmission Line
- Mastication
- Non-FS

* MAP = Management Action Point



Document Path: T:\FS\NFS\UintaWasatchCache\Program\5100Fire\GIS\SouthZoneFuels\Simlay\SheepCreek\RX\SheepCreekProjectArchELandscape.mxd

Uinta - Wasatch - Cache National Forest

