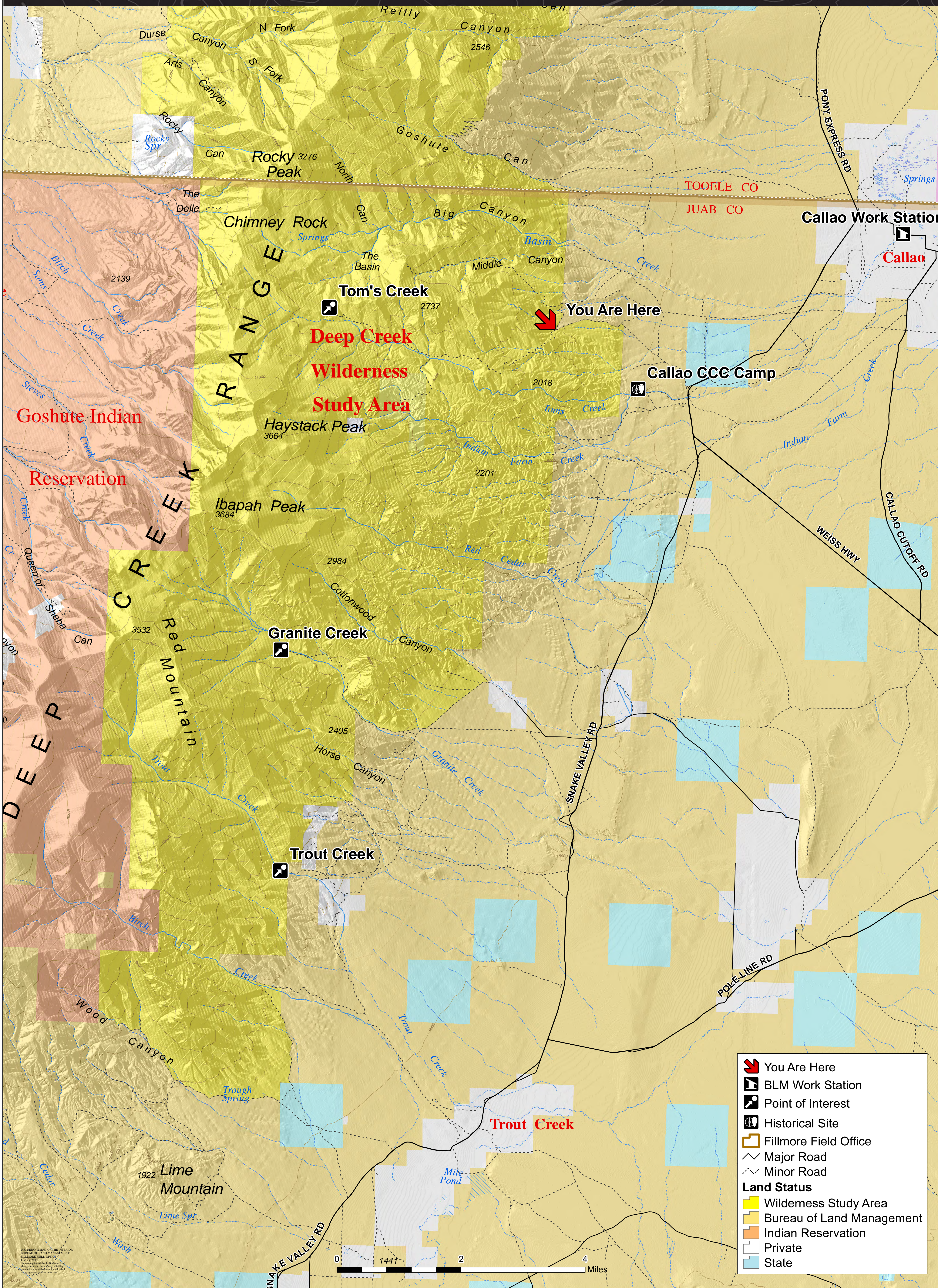
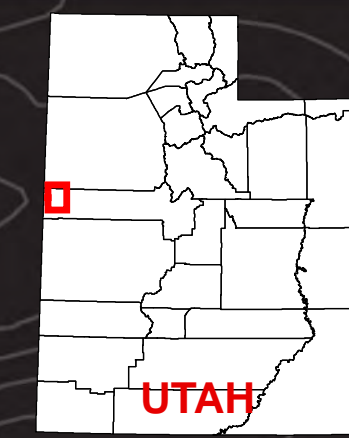




Deep Creek Mountains Wilderness Study Area

Fillmore Field Office



Flanked on the east by the Great Salt Lake Desert and on the west by the Deep Creek Valley, the Deep Creek Mountains are the highest landmark in all of western Utah. As an isolated "island" ecosystem and the fourth highest range in the Great Basin, the "Deeps" dominate the Great Salt Lake Desert in altitude, sheer mass, and biotic richness. From a barren landscape of alluvial outwash and playa basins, two 12,000 foot peaks rise 7,800 feet above the desert floor transitioning through sagebrush-grassland benches, pinyon-juniper forest, evergreen and aspen forests, and alpine meadows to form nine perennial streams and numerous canyons that twist through massive granite formations or quartzite cliffs.

Stay on Designated Routes

VISITOR ADVISORY:
 Access to the Deep Creek WSA boundary is generally via 4WD off-highway vehicle routes that are dusty, rocky, rugged, and sometimes impassable during inclement weather. Some routes are suitable for full-size vehicles (generally along the benches of the mountains) but many others are for ATVs, motorcycles, or side-by-sides only. Check conditions at:

Fillmore Field Office
 95 East 500 North, Fillmore, UT 84631
 435-743-3100

In case of emergency, dial 911.
 For non-emergency call Juab County Sheriff at 435-623-1344.

