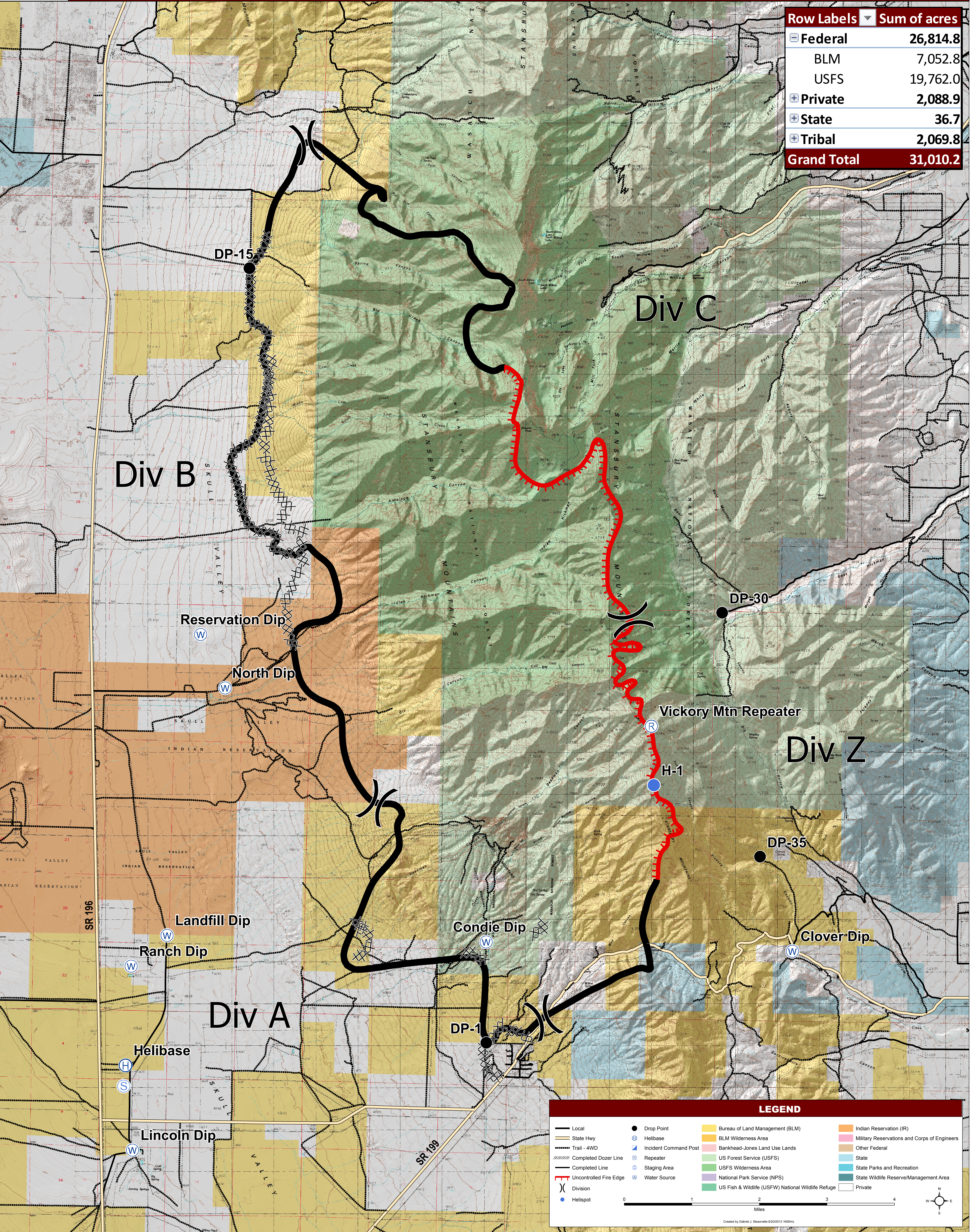




Patch Springs Fire

UT-SLD-000612 (HU2S)

31,010 Acres
August 20, 2013



Row Labels	Sum of acres
Federal	26,814.8
BLM	7,052.8
USFS	19,762.0
Private	2,088.9
State	36.7
Tribal	2,069.8
Grand Total	31,010.2

LEGEND

Local	Drop Point	Bureau of Land Management (BLM)	Indian Reservation (IR)
State Hwy	Helibase	BLM Wilderness Area	Military Reservations and Corps of Engineers
Trail - 4WD	Incident Command Post	Bankhead-Jones Land Use Lands	Other Federal
Completed Dozer Line	Repeater	US Forest Service (USFS)	State
Completed Line	Staging Area	USFS Wilderness Area	State Parks and Recreation
Uncontrolled Fire Edge	Water Source	National Park Service (NPS)	State Wildlife Reserve/Management Area
Division	Helispot	US Fish & Wildlife (USFW) National Wildlife Refuge	Private

0 1 2 3 4 Miles

Created by Gabriel J. Bissonette 8/20/2013 1600hrs