

111°30'0"W 111°29'0"W 111°28'0"W 111°27'0"W 111°26'0"W 111°25'0"W 111°24'0"W 111°23'0"W

40°49'0"N

40°49'0"N

40°48'0"N

40°48'0"N

40°47'0"N

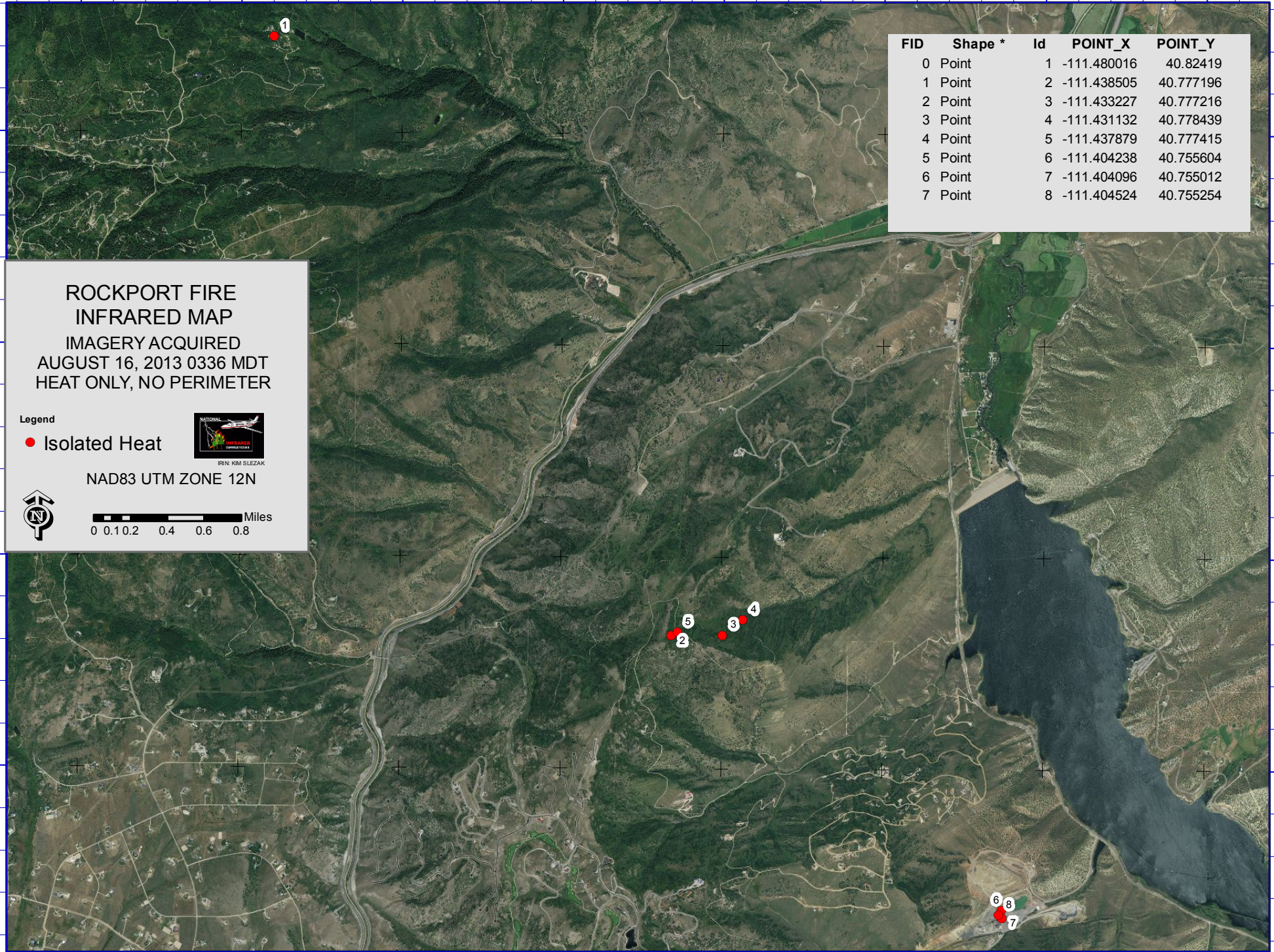
40°47'0"N

40°46'0"N

40°46'0"N


111°30'0"W 111°29'0"W 111°28'0"W 111°27'0"W 111°26'0"W 111°25'0"W 111°24'0"W 111°23'0"W

FID	Shape *	Id	POINT_X	POINT_Y
0	Point	1	-111.480016	40.82419
1	Point	2	-111.438505	40.777196
2	Point	3	-111.433227	40.777216
3	Point	4	-111.431132	40.778439
4	Point	5	-111.437879	40.777415
5	Point	6	-111.404238	40.755604
6	Point	7	-111.404096	40.755012
7	Point	8	-111.404524	40.755254





**ROCKPORT FIRE  
INFRARED MAP**  
 IMAGERY ACQUIRED  
 AUGUST 16, 2013 0336 MDT  
 HEAT ONLY, NO PERIMETER

**Legend**  
 ● Isolated Heat



NAD83 UTM ZONE 12N

0 0.1 0.2 0.4 0.6 0.8 Miles