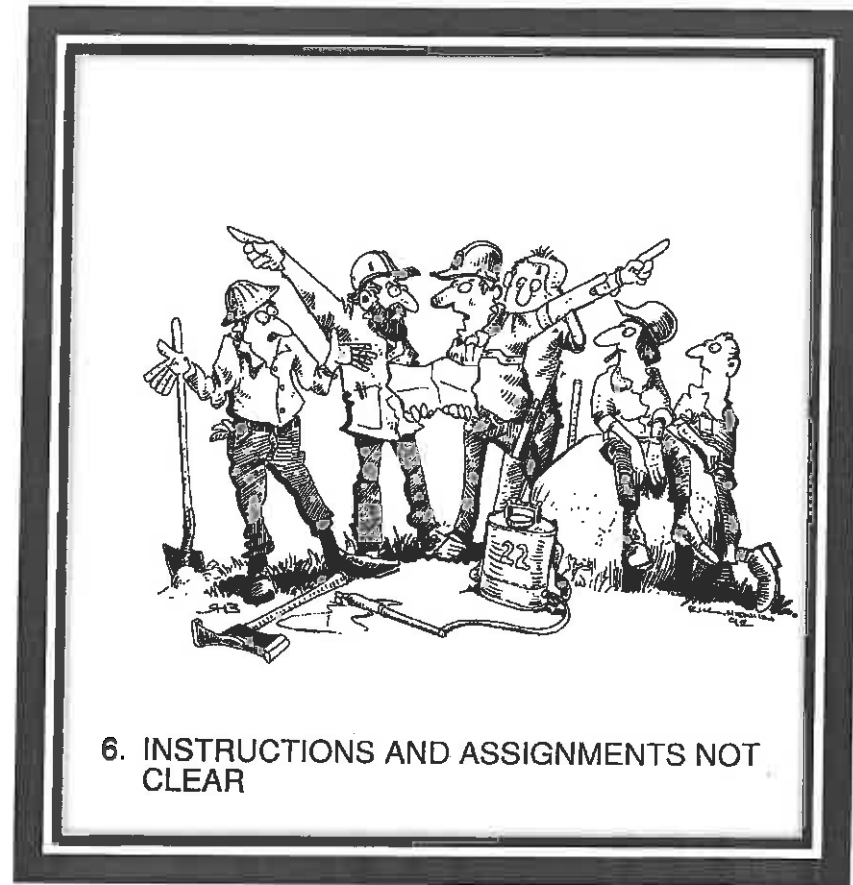


WEISER COMPLEX HELLS CANYON & RAFT FIRES

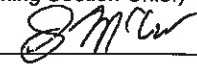


INCIDENT ACTION PLAN September 1, 2013

GPS FORMAT
DATUM NAD83
N 38° 21.18
W 119° 32.9



ID-PAF-013082
P4HX4J

Incident Objectives	1. Incident Name WEISER COMPLEX	2. Date Prepared 08/31/13	3. Time Prepared 2238
4. Operational Period 09/01/13 Sunday DAY Shift 0600 - 2030			
5. General Control Objectives for the incident (include alternatives) * Safety: Maintain safety of firefighting resources and public as the top priority. * Perimeter Control: Keep fire size as small as practical using perimeter control. *Community and Infrastructure Protection: Prevent fire from further impacting private values, commercial structures and improvements within the impacted area. *Cost: Unsure the costs related to fire management are commensurate with the values at risk. *State Lands: Minimize impacts to endowment lands timber, forage base and private forest land by using tactics to keep fire out of these areas. While planning and executing fire suppression actions, be mindful of the financial values associated with State, private timber and forage.			
6. Weather Forecast for Period SEE ATTACHED WEATHER FORECAST			
7. General Safety Message ** TRANSITION DAY- Make sure you know who you are working for and establish LCES!!			
8. Attachments (mark if attached)			
<input checked="" type="checkbox"/> Organization List - ICS 203	<input checked="" type="checkbox"/> Incident Map	<input type="checkbox"/>	
<input checked="" type="checkbox"/> Div. Assignment Lists - ICS 204	<input checked="" type="checkbox"/> Safety Message	<input type="checkbox"/>	
<input checked="" type="checkbox"/> Communications Plan - ICS205	<input checked="" type="checkbox"/> Traffic Plan	<input type="checkbox"/>	
<input checked="" type="checkbox"/> Medical Plan - ICS 206	<input checked="" type="checkbox"/> Fire Behavior	<input type="checkbox"/>	
<input checked="" type="checkbox"/> Air Operations Summary - ICS 220	<input checked="" type="checkbox"/> Fire Weather	<input type="checkbox"/>	
9. Prepared by (Planning Section Chief) Shawn McEvers 	10. Approved by (Incident Commander) Mike Whalen		

ORGANIZATION ASSIGNMENT LIST		9 Operations Section	
1. Incident Name WEISER COMPLEX		Operations Saction Chief-Line	R Anderson; M Friend(t)
2. Date Prepared 08/31/13	3. Time Prepared 2048	Operations Saction Chief-Planning	K Smihula; M Boomer (t)
4. Operational Period 09/01/13 Sunday DAY Shift 0600 - 2030		a Branch I - Division/Groups	
HELLS CANYON FIRE			
Position	Name	Division/Group A	C Trudeau; D Radar (t)
5 Incident Commander and Staff		Division/Group C	Barke; Harrison (t)
Incident Commander	Mike Whalen	Division/Group F	Isaacson
Deputy		Division/Group	
Safety Officer	J Nishikida; J Brollier	Division/Group	
Information Officer	Robyn Broyles(t)	Division/Group	
Liaison Officer		b Branch II - Division/Groups	
6 Agency Representative		RAFT FIRE	
Agency	Name	Division/Group N	Unstaffed
USFS	Kieth Lannon, Forest Supevisor	Division/Group Q	R Washburn; D gibbons (t)
USFS	Greg Lesch, District Ranger	Division/Group S	P Naman; E Nolan(t)
BLM	Terry Humphrey, Field Manager	Division/Group W	C Jones; T Hecht (t)
BLM	Matt McCoy	Division/Group Z	D Walker; Baxter (t)
STATE OF IDAHO	S. Corkill, Area Mgr Payette Lks	Division/Group	
7 Planning Section		c. Branch III - Division/Groups	
Chief	Shawn McEvers	INITIAL ATTACK	
Deputy			
Resources Unit	B Reese; W Burleson	Division/Group IA	Ellingham
Situation Unit	Mark Bohach	Division/Group	
Documentation Unit	Terry Berger	Division/Group	
Demobilization Unit	Nadia Eisenbraun	Division/Group	
Fire Behavior Analyst	Ken Rogers	Division/Group	
Human Resource Specialist		d Air Operations Branch	
Training Specialist	Rose Henderson	Air Operations Branch Director	Bill Hayes
GIS Specialist	Robin Dunn	Helibase Manager	Andy Guest
Computer Specialist	Kevin Hoffman	Air Attack Supervisor	T Delfalco; L Zajance; L Mars
Resource Advisor USFS	Jon Almack	Air Support Supervisor	Eric Taplin
Resource Advisor BLM	Al Tarter	Helicopter Coordinator	
8 Logistics Section		Air Tanker Coordinator	
Chief	John Houk	10 Finance Section	
Deputy		Chief	Darcy Crotteau
Supply Unit	Steve Howell	Deputy	
Facilities Unit	Scott Richey	Time Unit	Karen Kumiega; Ellen Joy(t)
Ground Support Unit	Bill Tuggle	EQTR	Julieann Frederick (t)
Communications Unit	Bryan Granath	Compensation/Claims Unit	
Medical Unit		Cost Unit	Chuck Joy; L Gaylord (t)
Security Unit	Ann Robins	Prepared by (Resource Unit Leader)	
Food Unit	Geneva Woods (t)	Bob Reese	

Division Assignment List		1. Branch		2. Division/Group H.C.-A	
3. Incident Name WEISER COMPLEX		4. Operational Period 09/01/13 Sunday DAY Shift 0600 - 2030			
5. Operations Personnel					
Operations Chief	R.ANDERSON; M.FRIEND	Division/Group Supervisor	TRUDEAU; RADAR (t)		
Operations Chief(Plans)	K.SMIHULA; M. BOOMER	Air Attack Supervisor	ERIC TAPLIN		
Branch Director		Safety Officer	J. NISHIKIDA; J. BROLLIER		
6. Resources Assigned this Period					
Strike Team/Task Force/ Resource Designator	Leader	Num of Pers.	Trans. Y/N	Drop Off PT./Time	Pick Up PT./Time
HC2IA BOISE #8		20		SPIKE	SPIKE
HC2IA MESCALERO		20		SPIKE	SPIKE
ENG4 E-426		5		SPIKE	SPIKE
ENG4 E-621		5		SPIKE	SPIKE
ENG4 E-461		5		SPIKE	SPIKE
ENG4 E-12				SPIKE	SPIKE
TFLD JEFF PRICHER		1		SPIKE	SPIKE
TFLD JAMES ROBERTS (t)		1		SPIKE	SPIKE
7. Control Operations					
STRUCTURE PROTECTION SECURE LINE FROM DIVISION BREAK A/C TO A/F					
8. Special Instructions					
9. Division/Group Communications Summary					
Function	Frequency - RX	Frequency - TX	Tone	System	Channel
Command					
Tactical Div/Group			SEE	COMMO	PLAN
Logistics					
Air to Ground					
Prepared by (Resource Unit Leader) WADE BURLESON (T)		Approved by (Planning Section Chief) SHAWN MCEVERS		Date Prepared 08/31/13	Time Prepared 2258

Division Assignment List	1. Branch	2. Division/Group H.C.-C
---------------------------------	-----------	------------------------------------

3. Incident Name WEISER COMPLEX	4. Operational Period 09/01/13 Sunday DAY Shift 0600 - 2030
---	--

5 Operations Personnel

Operations Chief	R.ANDERSON; M.FRIEND	Division/Group Supervisor	BARKER; HARRISON (t)
Operations Chief(Plans)	K.SMIHULA; M. BOOMER	Air Attack Supervisor	ERIC TAPLIN
Branch Director		Safety Officer	J. NISHIKIDA; J. BROLLIER

6 Resources Assigned this Period

Strike Team/Task Force/ Resource Designator	Leader	Num of Pers.	Trans. Y/N	Drop Off PT./Time	Pick Up PT./Time
IHC SAN JUAN		20		SPIKE	SPIKE
HC2IA ASP		20		SPIKE	SPIKE
HC2 SHO BAN #2		20		SPIKE	SPIKE

7. Control Operations

SECURE LINE FROM DIVISION BREAK A/C TO C/F

8. Special Instructions

9 Division/Group Communications Summary

Function	Frequency - RX	Frequency - TX	Tone	System	Channel	System	Channel
Command							
Tactical Div/Group			SEE	COMMO	PLAN		
Logistics							
Air to Ground							

Prepared by (Resource Unit Leader)	Approved by (Planning Section Chief)	Date Prepared	Time Prepared
WADE BURLESON (T)	SHAWN MCEVERS	08/31/13	2313

Division Assignment List	1. Branch	2. Division/Group H.C.-F
---------------------------------	-----------	------------------------------------

3. Incident Name WEISER COMPLEX	4. Operational Period 09/01/13 Sunday DAY Shift 0600 - 2030
---	---

5 **Operations Personnel**

Operations Chief	R.ANDERSON; M.FRIEND	Division/Group Supervisor	ISAACSON
Operations Chief(Plans)	K.SMIHULA; M. BOOMER	Air Attack Supervisor	ERIC TAPLIN
Branch Director		Safety Officer	J. NISHIKIDA; J. BROLLIER

6 **Resources Assigned this Period**

Strike Team/Task Force/ Resource Designator	Leader	Num of Pers.	Trans. Y/N	Drop Off PT./Time	Pick Up PT./Time
HC2IA WALLOW WHITMAN		20		SPIKE	SPIKE
HC2IA CENTENNIAL		20		SPIKE	SPIKE
HEQB DOUG WORZAUM		1		SPIKE	SPIKE

7. Control Operations

SECURE LINE FROM DIVISION BREAK A/F TO C/F

8. Special Instructions

9 **Division/Group Communications Summary**

Function	Frequency - RX	Frequency - TX	Tone	System	Channel	System	Channel
Command							
Tactical Div/Group			SEE	COMMO	PLAN		
Logistics							
Air to Ground							

Prepared by (Resource Unit Leader) WADE BURLESON (T)	Approved by (Planning Section Chief) SHAWN MCEVERS	Date Prepared 08/31/13	Time Prepared 2316
--	--	----------------------------------	------------------------------

Division Assignment List		1. Branch		2. Division/Group RAFT-N			
3. Incident Name WEISER COMPLEX		4. Operational Period 09/01/13 Sunday DAY Shift 0600 - 2030					
5. Operations Personnel							
Operations Chief	R.ANDERSON; M.FRIEND		Division/Group Supervisor				
Operations Chief(Plans)	K.SMIHULA; M. BOOMER		Air Attack Supervisor	ERIC TAPLIN			
Branch Director		Safety Officer	J. NISHIKIDA; J. BROLLIER				
6. Resources Assigned this Period							
Strike Team/Task Force/ Resource Designator	Leader	Num of Pers.	Trans. Y/N	Drop Off PT./Time	Pick Up PT./Time		
7. Control Operations							
UNSTAFFED-PATROL BY AIR							
8. Special Instructions							
9. Division/Group Communications Summary							
Function	Frequency - RX	Frequency - TX	Tone	System	Channel	System	Channel
Command							
Tactical Div/Group			SEE	COMMO	PLAN		
Logistics							
Air to Ground							
Prepared by (Resource Unit Leader)	Approved by (Planning Section Chief)			Date Prepared	Time Prepared		
WADE BURLESON (t)	SHAWN MCEVERS			08/31/13	2104		

Division Assignment List		1. Branch		2. Division/Group RAFT-Q			
3. Incident Name WEISER COMPLEX		4. Operational Period 09/01/13 Sunday DAY Shift 0600 - 2030					
5 Operations Personnel							
Operations Chief	R.ANDERSON; M.FRIEND	Division/Group Supervisor	WASHBURN;D. GIBBONS(t)				
Operations Chief(Plans)	K.SMIHULA; M. BOOMER	Air Attack Supervisor	ERIC TAPLIN				
Branch Director		Safety Officer	J. NISHIKIDA; J. BROLLIER				
6 Resources Assigned this Period							
Strike Team/Task Force/ Resource Designator	Leader	Num of Pers.	Trans. Y/N	Drop Off PT./Time	Pick Up PT./Time		
HC2IA FREMONT #6		20		DIV Q	TBD		
HC2IA LAKEVIEW BLM		20		DIV Q	TBD		
ENG4 BLM 1445		5		DIV Q	TBD		
ENG4 UTAH COUNTY #13		5		DIV Q	TBD		
7. Control Operations							
STRUCTURE PROTECTION KEEP FIRE SOUTH OF STURGILL CREEK ROAD							
8. Special Instructions							
EVALUATE POTENTIAL SPIKE CAMP LOCATION ESTABLISH DROP POINTS							
9 Division/Group Communications Summary							
Function	Frequency - RX	Frequency - TX	Tone	System	Channel	System	Channel
Command							
Tactical Div/Group			SEE	COMMO	PLAN		
Logistics							
Air to Ground							
Prepared by (Resource Unit Leader)		Approved by (Planning Section Chief)		Date Prepared	Time Prepared		
WADE BURLESON (T)		SHAWN MCEVERS		08/31/13	2113		

Division Assignment List		1. Branch		2. Division/Group RAFT-S			
3. Incident Name WEISER COMPLEX		4. Operational Period 09/01/13 Sunday DAY Shift 0600 - 2030					
5. Operations Personnel							
Operations Chief	R.ANDERSON; M.FRIEND		Division/Group Supervisor	NAMAN			
Operations Chief(Plans)	K.SMIHULA; M. BOOMER		Air Attack Supervisor	ERIC TAPLIN			
Branch Director			Safety Officer	J. NISHIKIDA; J. BROLLIER			
6. Resources Assigned this Period							
Strike Team/Task Force/ Resource Designator	Leader	Num of Pers.	Trans. Y/N	Drop Off PT./Time	Pick Up PT./Time		
IHC ROGUE RIVER		20		DIV S	LINE SPIKE		
HC21A EASTERN NEVEDA		20		DIV S	TBD		
ENG4 IDAHO HEATSEEKERS #18		5		DIV S	TBD		
ENG4 IDAHO HEATSEEKERS #16		5		DIV S	TBD		
ENG4 HTF #452		5		DIV S	TBD		
TFLD	CHRIS HENRY	1		DIV S	TBD		
ENG4 FS #4711 NIGHT SHIFT		5		1300	TBD		
ENG4 LONE PEAK NIGHT SHIFT		5		1300	TBD		
DIVS(t)	Ingram	1		1300	TBD		
7. Control Operations							
ESTABLISH ANCHOR @ STURGILL CREEK ROAD CONSTRUCT LINE TOWARDS S/W DIVISION BREAK							
8. Special Instructions							
EVALUATE POTENTIAL SPIKE CAMP LOCATION ESTABLISH DROP POINTS							
9. Division/Group Communications Summary							
Function	Frequency - RX	Frequency - TX	Tone	System	Channel	System	Channel
Command							
Tactical Div/Group			SEE	COMMO	PLAN		
Logistics							
Air to Ground							
Prepared by (Resource Unit Leader) WADE BURLESON (T)		Approved by (Planning Section Chief) SHAWN MCEVERS		Date Prepared 08/31/13		Time Prepared 2137	

Division Assignment List	1. Branch	2. Division/Group RAFT-W
---------------------------------	-----------	------------------------------------

3. Incident Name WEISER COMPLEX	4. Operational Period 09/01/13 Sunday DAY Shift 0600 - 2030
------------------------------------	--

5. Operations Personnel			
Operations Chief	R.ANDERSON; M.FRIEND	Division/Group Supervisor	C. JONES; T. HECHT (t)
Operations Chief(Plans)	K.SMIHULA; M. BOOMER	Air Attack Supervisor	ERIC TAPLIN
Branch Director		Safety Officer	J. NISHIKIDA; J. BROLLIER

6. Resources Assigned this Period					
Strike Team/Task Force/ Resource Designator	Leader	Num of Pers.	Trans. Y/N	Drop Off PT./Time	Pick Up PT./Time
IHC LONE PEAK		20		DIV W	LINE SPIKE
IHC CRAIG		20		DIV W	LINE SPIKE
HC2IA MIDPLAINS		20		DIV W	TBD
ENG4 IDAHO HEATSEEKERS #15		5		DIV W	TBD
ENG4 BRIAN HEAD E-74		5		DIV W	TBD
HEQB	TODD CAMPBELL	1		DIV W	TBD
HEQB	T REID	1		DIV W	TBD
EMT ADVANCED	JERMEY OLESON	1		DIV W	TBD
EMT PARAMEDIC	ANNA MARTIN	1		DIV W	TBD
LINE SAFETY SKEET HOUSTON (t)		1		DIV W	TBD
TFLD STEPHENS		1		DIV W	TBD
TFLD WARDEN		1		DIV W	TBD

7. Control Operations

ESTABLISH ANCHOR AT Z/W DIVISION BREAK
CONSTRUCT LINE EASTWARD

8. Special Instructions

EVALUATE POTENTIAL SPIKE CAMP LOCATION
ESTABLISH DROP POINTS

9. Division/Group Communications Summary							
Function	Frequency - RX	Frequency - TX	Tone	System	Channel	System	Channel
Command							
Tactical Div/Group			SEE	COMMO	PLAN		
Logistics							
Air to Ground							

Prepared by (Resource Unit Leader) WADE BURLESON (T)	Approved by (Planning Section Chief) SHAWN MCEVERS	Date Prepared 08/31/13	Time Prepared 2214
---	---	---------------------------	-----------------------

Division Assignment List	1. Branch	2. Division/Group I.A.
---------------------------------	-----------	----------------------------------

3. Incident Name WEISER COMPLEX	4. Operational Period 09/01/13 Sunday DAY Shift 0600 - 2030
---	---

5. Operations Personnel			
Operations Chief	R.ANDERSON; M.FRIEND	Division/Group Supervisor	ELLINGHAM
Operations Chief(Plans)	K.SMIHULA; M. BOOMER	Air Attack Supervisor	ERIC TAPLIN
Branch Director		Safety Officer	J. NISHIKIDA; J. BROLLIER

6. Resources Assigned this Period					
Strike Team/Task Force/ Resource Designator	Leader	Num of Pers.	Trans. Y/N	Drop Off PT./Time	Pick Up PT./Time
TFLD MARTY WOODS		1		ICP	ICP
TFLD MARTY KOLB (t)		1		ICP	ICP

7. Control Operations
BE PREPARED FOR INITIAL ATTACK

8. Special Instructions
OBTAIN MAPS OF INITIAL ATTACK AREA FROM SITUTATION UNIT

9. Division/Group Communications Summary							
Function	Frequency - RX	Frequency - TX	Tone	System	Channel	System	Channel
Command							
Tactical Div/Group			SEE	COMMO	PLAN		
Logistics							
Air to Ground							
Prepared by (Resource Unit Leader) WADE BURLESON (T)		Approved by (Planning Section Chief) SHAWN MCEVERS		Date Prepared 08/31/13		Time Prepared 2320	

Air Operations Summary		Prepared by Bill Hayes		Date Prepared 08/31/13	Time Prepared 2035								
1. Incident Name WEISER COMPLEX		2. Operational Period 09/01/13 Sunday DAY Shift 0600 - 2030		Sunrise 0712	Sunset 2023								
3. REMARKS (Safety Notes, Hazards, Air Operations Special Equipment, etc.) 4. MEDEVAC AIRCRAFT 5. TFR													
1. High Voltage line near Brownie Reservoir 2. High Voltage lines between Hells Canyon and Raft fires. 3. MTR west of complex (deflicted)													
6. PERSONNEL													
AOBD	Bill Hayes	Phone # 435-621-3061	7. FREQUENCY Raft Air to Air	AM RX/TX 133.950	FM RX/TX	8. FIXED-WING	# Avail/Type/Make-Model/FAA#/Base(s)						
ASGS	Eric Taplin	208-634-9425	Raft RW	135.550									
HEB1	Andy Guest	208-315-5224	Hells Canyon Air to Air	124.550		Leadplanes							
ATGS	Tony Defalco	702-592-9215	Hells Canyon RW	127.800		Base FAX#:							
ATGS	Larry Zajance	208-315-7871	Raft A/G		170.0000	Air Attack	7DM/ King Air,9GW/ Aero Commander,						
ATGS	Larry Mars	479-857-9663	Hells Canyon A/G		166.6750		0TC/ Aero Commander						
HLB	Midvale Helibase	208-355-0018	Deck		163.1000								
9. HELICOPTERS (Use additional Sheets As Necessary)													
FAA #	TY	MAKE/MODEL	BASE	AVAIL	START	REMARKS	FAA N#	TY	MAKE/MODEL	BASE	AVAIL	START	REMARKS
26GM	3	B206L4	Midvale	0800	0830	H-6GM							
1HW	3	AS350B2	Midvale	0800	0830	H-1HW							
1CV	3	AS350B3	Midvale	0800	0830	H-1CV							
1206G	2	B205	Midvale	0800	0830	H-06G							
212KA	2	B212	Midvale	0800	0830	H-2KA							
C-FMGM	1	Kmax	Midvale	0800	0830	H-MGM							
217AC	1	S-64E	Midvale	0800	0830	HT-737							
218AC	1	S-64E	Midvale	0800	0830	HT-741							

Air Operations Summary		Prepared by Bill Hayes	Date Prepared 08/31/13		Time Prepared 2035											
1. Incident Name WEISER COMPLEX		2. Operational Period 09/01/13 Sunday DAY Shift 0600 - 2030			Sunrise 0712		Sunset 2023									
9 HELICOPTERS (Continued)																
FAA #	TY	MAKE/MODEL	BASE	AVAIL	START	REMARKS	FAA N#	TY	MAKE/MODEL	BASE	AVAIL	START	REMARKS			
10. TASK/MISSION/ASSIGNMENT (Type/Function Includes Air Tactical, Retardant, Recon, Personnel Transport, Water Dropping, S&R, etc.)																
TYPE/FUNCTION	NAME OF PERSONNEL OR CARGO (if applicable) OR INSTRUCTIONS FOR TACTICAL AIRCRAFT													MISSION START	FLY FROM	FLY TO
Recon	Several Recons planned													TBD	HLB	Fire
Water Delivery	As requested													TBD	HLB	TBA
Cargo Delivery	AS requested													TBD	HLB	TBA
GIS Mapping	SITL													0900	HLB	Fire



INCIDENT Weather Forecast



FORECAST NO: 1
PREDICTION FOR: Day Shift
SHIFT DATE: Sunday 9/01/13
TIME AND DATE
FORECAST ISSUED: 2000 8/31/2013

NAME OF FIRE: Weiser Complex
UNIT: Payette Forest
SIGNED: Ope Goudswaard
Incident Meteorologist

WEATHER DISCUSSION:

An upper level ridge of high pressure will continue to move slowly to the east as the day progresses. Meanwhile, an upper level low pressure system will remain off the Pacific Northwest Coast. The circulation around these two systems will pull monsoonal moisture back into the region. Mid to high level moisture will slowly increase during the day today but no precipitation is expected. The monsoonal moisture will continue to increase early next week bringing a chance of showers and isolated thunderstorms to the complex. It appears Tuesday will be the best day of seeing precipitation as a strong upper level disturbance moves through the prevailing flow.

WEATHER FORECAST FOR TODAY:

WEATHER: Mostly sunny early, becoming partly cloudy in the afternoon.
TEMPERATURES: 3500-5500 feet: 87 to 92 **Over 5500 feet:** 82 to 87
HUMIDITY: 12 to 17 %
20 FT WINDS:

RIDGETOP --: Becoming South 8 to 15 mph with gusts of 25 mph.
SLOPE/VALLEY --: Light upslope/up valley becoming southwest 8 to 12 mph with gusts of 20 mph.

HAINES INDEX: CWR: 0% **LAL:** 1 **HAINES:** 4
STABILITY/INVERSION: Weak inversion lifting before 1100...Mixing height 10000 ft AGL

WEATHER FOR TONIGHT:

WEATHER: Partly Cloudy with a slight chance of a shower towards morning.
TEMPERATURES: 3500-5500 feet: 62 to 66 **Over 5500 feet:** 54 to 58
HUMIDITY: 45 to 55%
20 FT WINDS:

RIDGETOP --: South 6 to 12 mph
SLOPE/VALLEY --: Becoming downslope 4 to 8 mph

HAINES INDEX: CWR: 0% **LAL:** 1 **HAINES:** 4

WEATHER FORECAST FOR MONDAY:

WEATHER: Partly to mostly cloudy with a chance of showers and isolated thunderstorms.
TEMPERATURES: 3500-5500 feet: 83 to 89 **Over 5500 feet:** 76 to 83
HUMIDITY: 24 to 29%
20 FT WINDS:

RIDGETOP --: Becoming South 8 to 12 mph with gusts of 20 mph.
SLOPE/VALLEY --: Light upslope/up valley becoming southwest 7 to 12 mph with gusts of 18 mph.

HAINES INDEX: CWR: 10% **LAL:** 3 **HAINES:** 3

EXTENDED FORECAST: Tuesday through Thursday:

Tuesday: Mostly cloudy with a 40% chance of showers and thunderstorms. Lows 55 to 62. Highs 78 to 88. South winds 8 to 12 mph with gusts of 20 mph possible. The chance of wetting rain is 30%.

Wednesday: Partly cloudy with a 30% chance of showers and thunderstorms. Lows 54 to 61. Highs 77 to 86. South winds 6 to 10 mph with gusts of 15 mph possible. The chance of wetting rain is 20%.

Thursday: Partly cloudy with a 30% chance of showers and thunderstorms. Lows 54 to 61. Highs 77 to 86. South winds 6 to 10 mph with gusts of 15 mph possible. The chance of wetting rain is 20%.

FIRE BEHAVIOR FORECAST

FORECAST NUMBER: 1	TYPE OF FIRE: Wildland Fire
FIRE NAME: Weiser Complex	OPERATIONAL PERIOD: Day Shift, September 1, 2013
DATE ISSUED: August 31, 2013	TIME ISSUED: 2100
UNIT: Payette NF, Weiser/Council RD	SIGNED: /s/ Ken Rodgers FBAN <i>Ken Rodgers</i>

INPUTS

WEATHER SUMMARY: Sunny with warm, dry southwest flow

- See attached forecast -

OUTPUTS

FIRE BEHAVIOR

GENERAL:

Active burning in all fuel types could occur as RH drops below 20% and afternoon winds increase. Smoldering and surface burning in grass, sagebrush, and timber patches/stringers can be expected as the smoke inversion breaks in late morning. Burn intensity generally increases around 2 pm with terrain and daily winds influencing spread. In grass and sagebrush expect 6' plus flame lengths and rates of spread of 30 ch/hr or greater depending on slope. Fire in timber patches will likely include single and group tree torching and spotting with afternoon upslope and ridgetop winds. Burning has continued until sundown, and likely later on upper slopes and ridges.

SPECIFIC:

Hells Canyon

Divisions A, C & F: These divisions could experience minimal to low activity depending on RH, wind, fuel type, and heat remaining from past burn days. Smoldering and hot spots are possible in isolated locations along the perimeter and within the interior of the burn.

Raft

Divisions N, Q, S, W, Z: These divisions are likely to experience moderate to high fire activity with upslope and erratic winds along the river breaks and surrounding mountainous terrain. Rapid upslope and downslope spread in grass and brush fuels is possible.

Initial Attack Actions: Potential for intense burning and rapid spread on new starts in all fuel types.

AIR OPERATIONS:

Visibility for air operations may be limited in the morning until smoke lifts around 1100-1200. Turbulence can be expected with afternoon winds over the fire and dip sites. Blowing dust, ash and dust devils are likely with afternoon winds. Breaks of river canyons and ridgetops may cause turbulence for air operations.

SAFETY

Remember that a breakout or a new start can result in large fire growth with rapid rates of spread.

Fire Can Move Downslope/Downcanyon with Evening Shift of Winds

Remember local Thresholds – Watch Out:

Temperatures over 85°
20' Wind speed over 15 mph
RH less than 25%

Incident Radio Communications Plan (ICS 205)

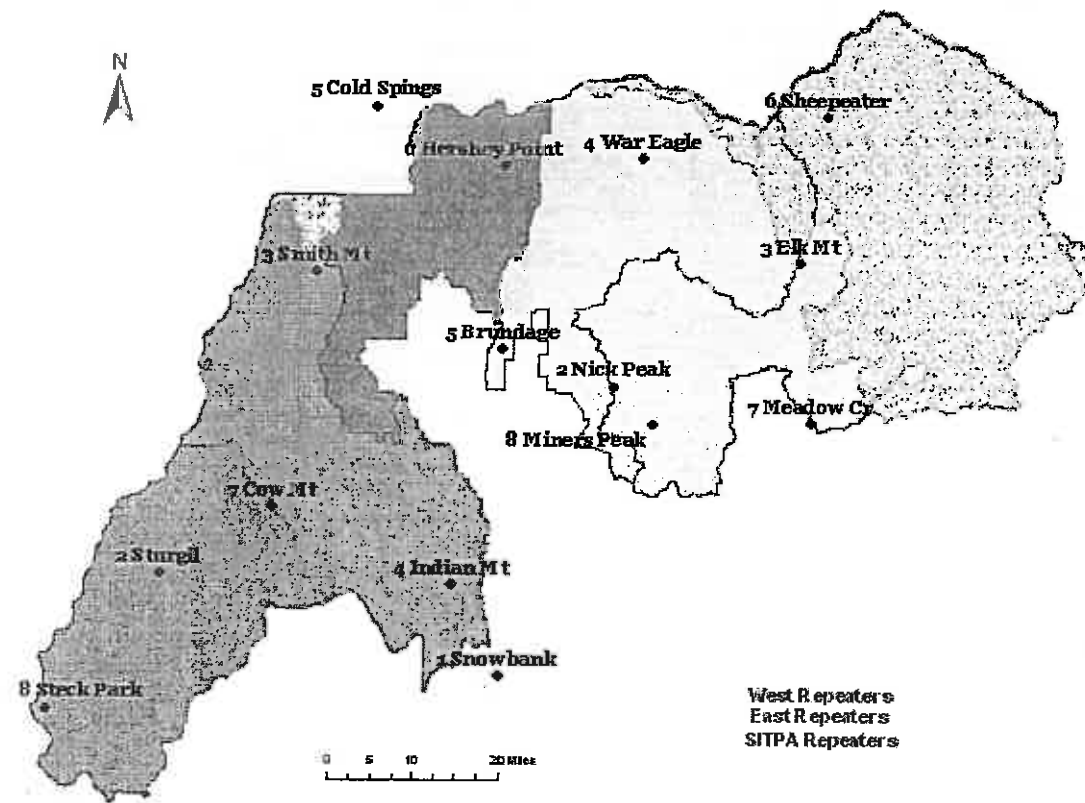
Incident Name: Weiser Complex	Date/Time Prepared: 08/31/2013 @ 1300	Narrow/Wideband Narrow	Operational Period: 09/01 Day shift
Channel	Function	Frequency	Assignment & Remarks
1	TAC 1	Rx/Tx 168.0500 Rx/Tx TONE 107.2	Division A & Q
2	TAC 2	Rx/Tx 168.2000 Rx/Tx TONE 107.2	Division C
3	TAC 3	Rx/Tx 168.6000 Rx/Tx TONE 107.2	Division F
4	TAC 4	Rx/Tx 166.7250 Rx/Tx TONE 107.2	Division S
5	TAC 5	Rx/Tx 166.7750 Rx/Tx TONE 107.2	Division W
6	TAC 6	Rx/Tx 168.2500 Rx/Tx TONE 107.2	Division Z & IA
7	CMD 7	Rx 163.0375 Tx 170.0250 Rx/Tx TONE 107.2	CMD Net On Sturgil
8	CMD 8	Rx XXX.XXXX Tx XXX.XXXX Rx/Tx TONE XXX.X	
9	Empty		
10	Empty		
11	Sturgil	Rx 171.5500 Tx 172.3500 Tx TONE 123.0	Link to Dispatch for Emergencies
12	Empty		
13	Empty		
14	A/G 11	Rx/Tx 166.6750 No Tone	Air to Ground use
15	A/G 20	Rx/Tx 170.0000 Tone No	Air to Ground use
16	Air Guard	Rx/Tx 168.6250 TX Tone 110.9	***Aircraft Emergency Frequency*** Use only in emergency for aircraft contact.

Prepared by: Raymond Whatley *Bryan G... C.O.M.L.*
 Notes: 1) Use human repeaters when necessary.
All radios should be run in Analog mode only (not digital or multi-mode) and Narrowband

Payette Com Plan

Radio Frequencies			
Description	Display	RX	TX
East Zone Simplex	East DIR	169.9000	169.9000
East Zone Repeaters	East RPT	169.9000	170.5500
West Zone Simplex	West DIR	171.5500	171.5500
West Zone Repeaters	West RPT	171.5500	172.3500
Air To Ground 13	A/G 13	167.4250	167.4250
Air To Ground 30	A/G 30	171.1375	171.1375
Fire Tactical 1	Tac 1	166.9875	166.9875
Fire Tactical 2	Tac 2	172.4000	172.4000
Admin 1	Admin 1	163.7125	163.7125
Admin 2	Admin 2	168.6125	168.6125
Scene of Action	SOA	168.7750	168.7750
Scene of Action Repeat	SOA RPT	168.7750	164.9125
SITPA Simplex	SITPA D	159.4500	159.4500
SITPA Repeaters	SITPA R	159.4500	151.3100
Payette Logistics A	LOG DIR	173.6250	173.6250
Payette Logistics Rpt	LOG RPT	173.6250	167.1375

Payette Com Plan
REPEATERS AND FREQUENCIES



Tones						
Tone	Freq	PAF West	PAF East	SITPA	COOP	PAF LOG RPT
1	110.9	W Simplex	E Simplex	Snowbank		Nick Peak
2	123.0	Sturgil	Nick Peak		911 N Adams	Elk
3	131.8	Smith Mt	Elk			DIR Brundage
4	136.5	Indian Mt	War Eagle		911 S Adams	Portable RPT
5	146.2	Cold Springs		Brundage		
6	156.7	Hershey Point	Sheepeater			
7	167.9	Cow Mt	Meadow Cr			
8	103.5	Steck Park	Miners Peak			
9	179.9					
10	141.3					
11	100.0				Brundage Ski	
12	114.8					
13	127.3					
14	151.4					
15	77.0				IDL Mutual	
16	88.5				911 Valley	

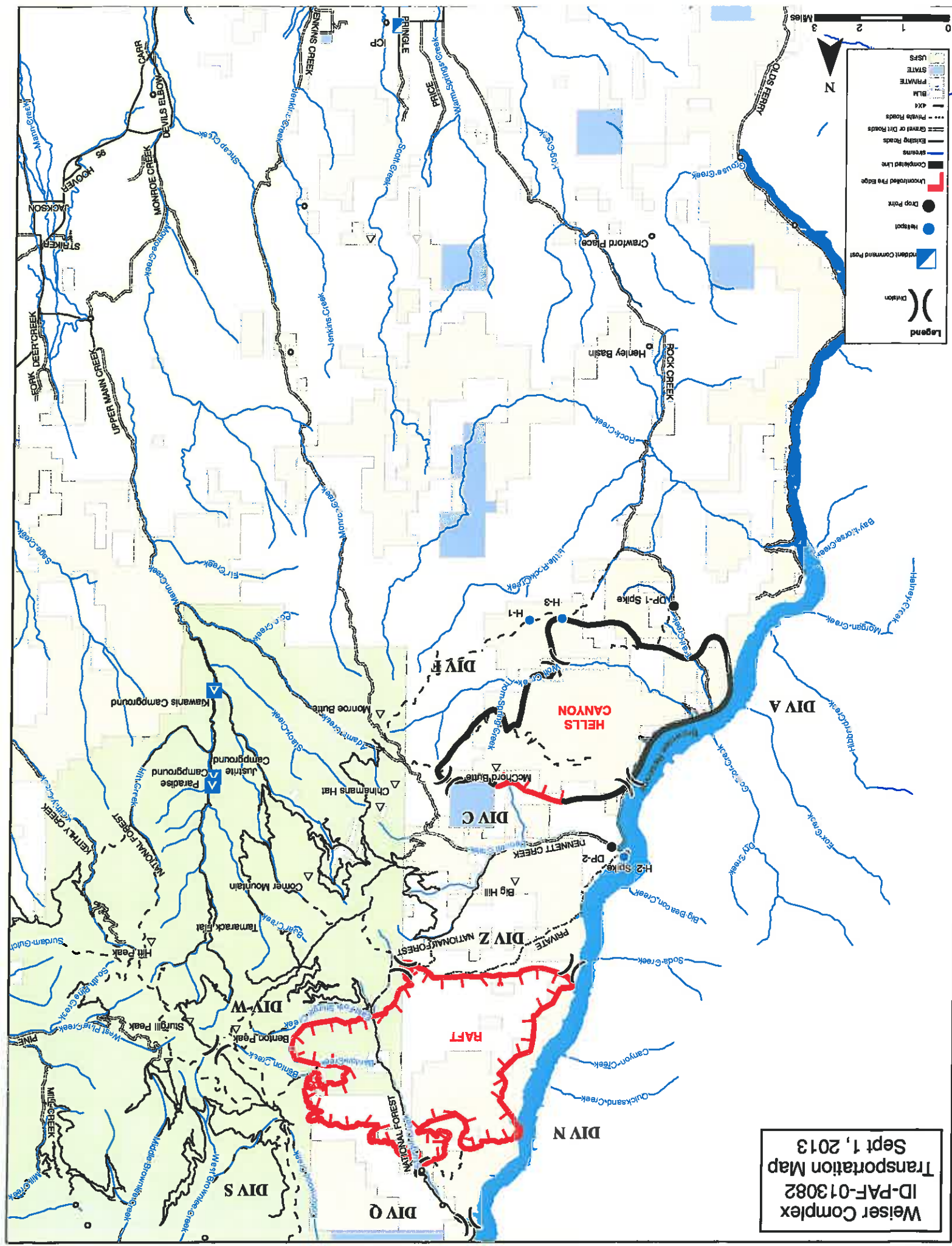
Hazards	DIV	Mitigation(s), Warnings and Remedies
Driving	ALL	Slow down - School in session, Narrow roads Practice "Defensive Driving" to and from fire Use spotters when backing, honk horn, use headlights, 3 second rule for spacing, use , chocks
Heat Related Injuies	ALL	Drink fluids throughout operational period Carry extra water to line and chache water at drop points Take frequent breaks, ex. 10 min for each hr Recognize Heat related symptoms: loss of energy, headaches, dizziness, no hunger hot skin, lack of sweating
Steep Terrain	ALL	Use safe ling building techniques and spacing Evaluate necessity of personnel for work
Extreme Fire Behavior	ALL	LCES, Understand and share weather observations Review "Thunder Storm Safety" guidelines IRPG page 19 Establish "Trigger Points" for withdrawl Use "Risk Management" process prior to (refer to IRPG, p 1)
Line Construction	ALL	Ensure LCES in place prior to engagement (IRPG page 6) Use Downhill Line Constrction (IRPG p8) Utilize Risk Management Process (IRPG, p 1)
Chain Saw Ops	ALL	Follow "Hazard Tree Guidelines" (IRPG p 20/21) Look Up, Down and Around for hazard trees Only felll and buck trees within your expertise/training Follow "Procedural Felling Ops" (IRPG p 89) Do not fall trees duriong high wind events
Public Interaction	ALL	Be alert to non-fire personnel (hunters, vacationers, ranchers) Don't park/block driveways or private roads Report problems in closed areas, don't engage
Communications	ALL	Ensure communications with your supervisor/others Clone radios to ensure have correct frequencies Report any communication problems (bleed over,s dead spots, other issue)
Air Ops	ALL	Follow "aviation Watch Out Situations (IRPG p 52) Don't plan on air resources for medical transports Direct bucket drops (IRPG 65) Ensure proper communication with air resources
Animals (Bears, Snakes) Animals (Bees, Wasps)	ALL	Be vigilant for rattlesnakes If allergic to bee stings, carry EpiPen
Dozer Ops	ALL	Minimize time below dozer Only approach when in eye contact
Toxic weeds	ALL	Recognize Poison Ivy When cottign Sumac, protect airway
ATV/UTV Ops	ALL	Wear proper PPE per USFS protocols) Drive in control speeds

MEDICAL PLAN 206	Project Name Weiser Complex	Date Prepared, Time 08/31/2013, 1830	Name of Preparer Chad Fisher	Work Period Day Shift	
Ambulance Services					
Name	Complete Address	Phone & EMS Frequency	Advanced Life Support (ALS) Yes No		
Weiser Ambulance		911			
Air Ambulance Services					
Name	Phone	Type of Aircraft & Capability			
Contact Payette Dispatch Initial Attack desk for coordination	208-634-2757				
Hospitals					
Name Complete Address	GPS Datum – WGS 84 Coordinate Standard Degrees Decimal Minutes DD° MM.MMM' N - Lat DD° MM.MMM' W - Long	Travel Time Air Gnd	Phone	Helipad Yes No	Level of Care Facility
Weiser Memorial	Lat: Long: VHF: 155.340		208-549-0370		
St. Alphonsus— Ontario 351 S. W. 9 th St. Ontario, OR 97914	Lat: Long: VHF:		541-881-7100	X	
Medical Emergency Procedures					
FOR ALL MEDICAL EMERGENCIES: IDENTIFY POINT OF CONTACT (POC), POSITION AND ANNOUNCE "MEDICAL EMERGENCY" TO INITIATE RESPONSE FROM IMT COMMUNICATIONS/DISPATCH					
Medical Life Threatening Procedures					
In the event of a medical emergency the On-Scene Point of Contact (POC) will provide the following information to Communications					
<ol style="list-style-type: none"> 1. Declare the nature of the emergency. <ol style="list-style-type: none"> a. Medical injury/illness? Is it life threatening? 2. If Life threatening, request that the designated frequency be cleared for emergency traffic 3. Identify the On-Scene Point of Contact (POC) by resource and last name (i.e. POC is TFLD Smith) 4. Identify nature of incident, number injured, patient assessment(s) and location (geographic and GPS coordinates) 5. Identify on-scene medical personnel by position and name (i.e. EMT Jones) 6. Identify preferred method of patient transport 7. Request any additional resources and/or equipment needed 8. Document all information received and transmitted on the radio or phone 9. Identify any changes in the On-Scene POC or medical personnel as they occur 					

The identified medevac helicopter for the Weiser Complex is 2KA located at Midvale.

Note: For life flight helicopter evacuations contact and work directly with the Initial Attack Payette Dispatch organization. The Payette Forest has in place a pre-arranged system of mobilizing and coordinating contact with the hospital/ambulance service (or Life Flight/Guardian—as situation applies), comp/claims personnel, flight-following, and airspace control at the airport and helibases. Outside calls to any of the above confuse the system and may slow the overall process.

Area Location Capability	
Division Branch Group	
W	EMS Responders & Capability: McCall Fire Medics—Paramedic & Advanced EMT Equipment Available on Scene: AED, backboard, Oxygen, intubation, Medical Emergency Channel: Command ETA for Ambulance to Scene: Air: Ground: Approved Helispot: Lat: Long:
	EMS Responders & Capability: Equipment Available on Scene: Medical Emergency Channel: ETA for Ambulance to Scene: Air: Ground: Approved Helispot: Lat: Long:
Remote Camp Location(s)	Name & Location
TBD	Point of Contact: San Juan IHC EMS Responders & Capability: Equipment Available on Scene: Medical Emergency Channel: Command ETA for Ambulance to Scene: Air: Ground: Approved Helispot: Lat: Long:
Prepared By (SOF2(t))	Reviewed By (Safety Officer) Date: 08/31/2013
Date: 08/31/2013	<i>A. Chad Gabe</i>



Weiser Complex
 ID-PAF-013082
 Transportation Map
 Sept 1, 2013

117 10W

117 8W

117 6W

117 4W

117 2W

117 0W

**Weiser Complex
Hells Canyon Fire
ID-PAF-013082
IAP Map
Nad 83 11N
Sept 1, 2013
9,373 Acres**



44 34N

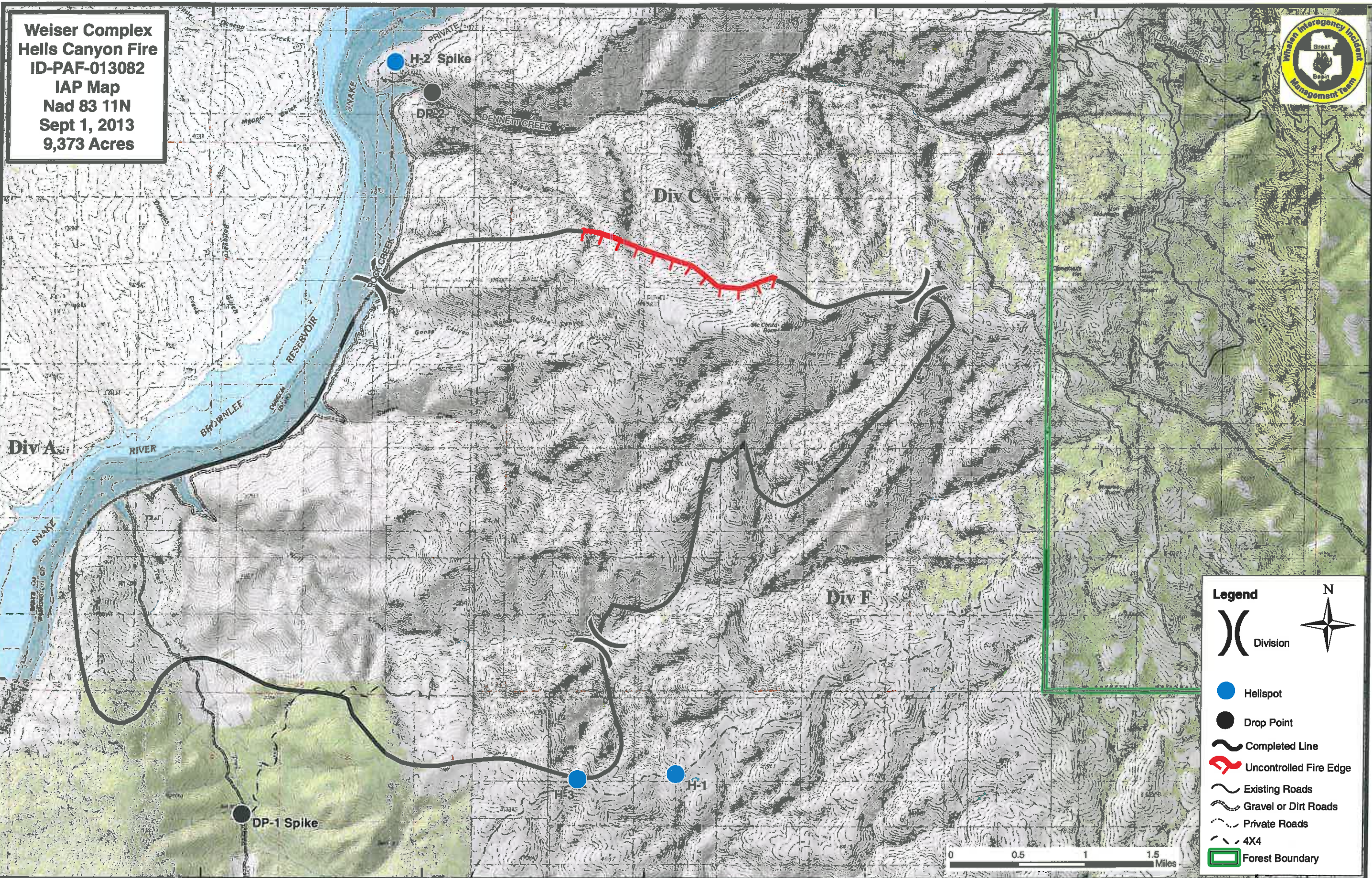
44 34N

44 32N

44 32N

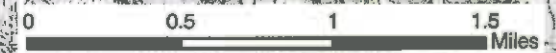
44 30N

44 30N



Legend

- Division
- N
- Helispot
- Drop Point
- Completed Line
- Uncontrolled Fire Edge
- Existing Roads
- Gravel or Dirt Roads
- Private Roads
- 4X4
- Forest Boundary



117 10W

117 8W

117 6W

117 4W

117 2W

117 0W

117 6W

117 4W

117 2W

117 0W

116 58W

116 56W

**Weiser Complex
Raft Fire
ID-PAF-013082
IAP Map
Nad 83 11N
Sept 1, 2013
9,408 Acres**



44 40N

44 40N

44 38N

44 38N

44 36N

44 36N

117 6W

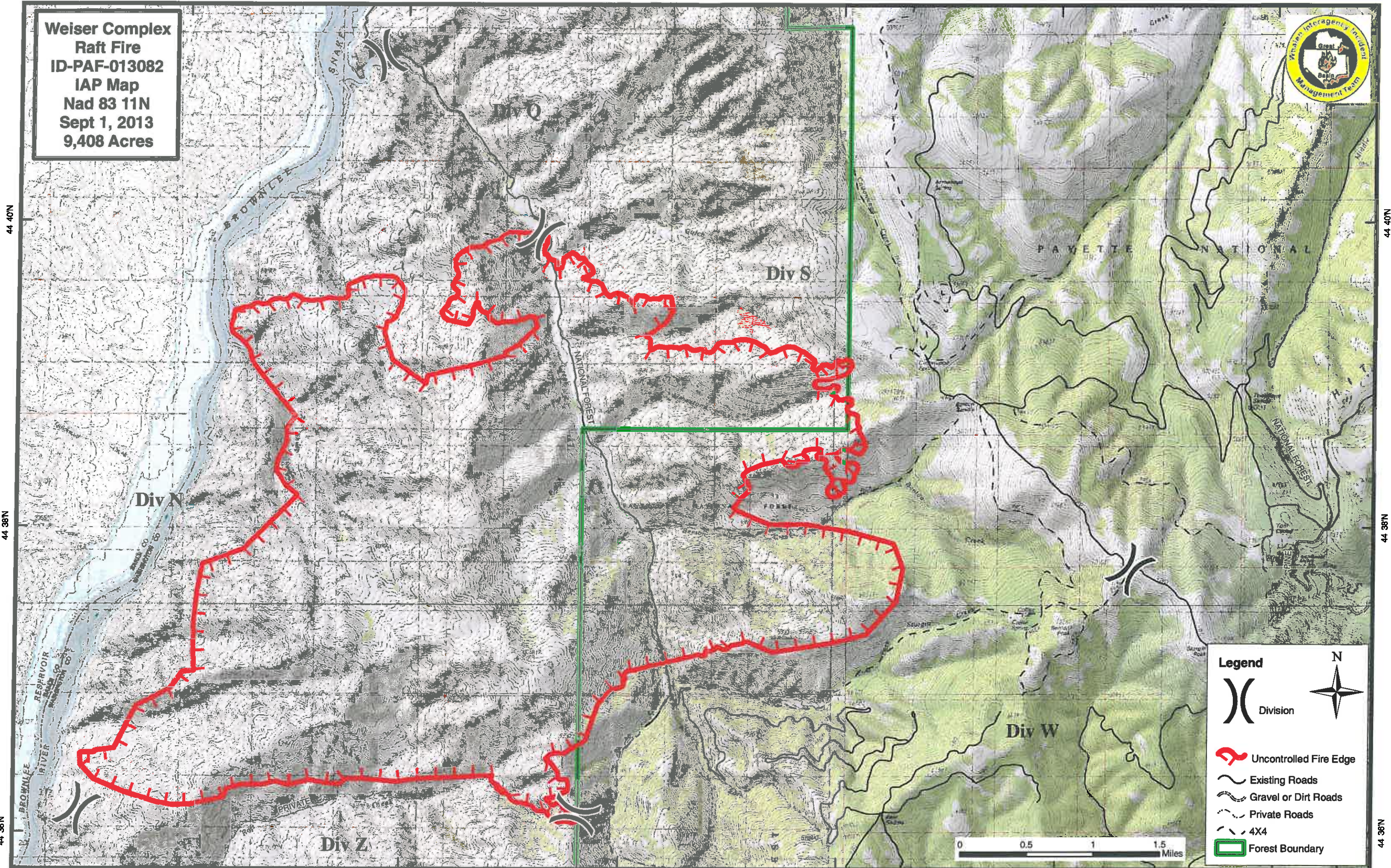
117 4W

117 2W

117 0W

116 58W

116 56W



Legend

- Division
- Uncontrolled Fire Edge
- Existing Roads
- Gravel or Dirt Roads
- Private Roads
- 4X4
- Forest Boundary

Scale: 0 0.5 1 1.5 Miles

North Arrow: N