

# WEISER COMPLEX

## HELLS CANYON & RAFT FIRES

### INCIDENT ACTION PLAN

September 6, 2013



Autumn Dunn, 14, 8/14/2013

ID-PAF-013082  
P4HX4J

[payettefireinformation@gmail.com](mailto:payettefireinformation@gmail.com)



GPS FORMAT  
DATUM NAD 83  
N 44° 20.480  
W 117° 4.048



<b>Incident Objectives</b>	1. Incident Name WEISER COMPLEX	2. Date Prepared 09/05/13	3. Time Prepared 1015
----------------------------	------------------------------------	------------------------------	--------------------------

4. Operational Period  
09/06/13 Friday DAY Shift 0600 - 2030

5. General Control Objectives for the incident (include alternatives)

- \* **Safety:** Maintain safety of firefighting resources and public as the top priority.
- \* **Perimeter Control:** Keep fire size as small as practical using perimeter control.
- \* **Community and Infrastructure Protection:** Prevent fire from further impacting private values, commercial structures and improvements within the impacted area.
- \* **Cost:** Insure the costs related to fire management are commensurate with the values at risk.
- \* **State Lands:** Minimize impacts to endowment lands timber, forage base and private forest land by using tactics to keep fire out of these areas. While planning and executing fire suppression actions, be mindful of the financial values associated with State, private timber and forage.

6. Weather Forecast for Period

**PLEASE SEE ATTACHED WEATHER FORECAST**

7. General Safety Message

**\*\* Complacency injures!**

**\*\* Have situational awareness at all times!**

8. Attachments (mark if attached)		
<input checked="" type="checkbox"/> Organization List - ICS 203	<input checked="" type="checkbox"/> Incident Map	<input checked="" type="checkbox"/> Phone List
<input checked="" type="checkbox"/> Div. Assignment Lists - ICS 204	<input checked="" type="checkbox"/> Safety Message	<input checked="" type="checkbox"/> Training Message
<input checked="" type="checkbox"/> Communications Plan - ICS205	<input checked="" type="checkbox"/> Traffic Plan	<input type="checkbox"/>
<input checked="" type="checkbox"/> Medical Plan - ICS 206	<input checked="" type="checkbox"/> Fire Behavior	<input type="checkbox"/>
<input checked="" type="checkbox"/> Air Operations Summary - ICS 220	<input checked="" type="checkbox"/> Fire Weather	<input type="checkbox"/>

9. Prepared by (Planning Section Chief) Shawn McEvers <i>Shawn McEvers</i>	10. Approved by (Incident Commander) Mark Rosenthal <i>Mark Rosenthal</i>
---	--

ORGANIZATION ASSIGNMENT LIST		9. Operations Section	
1. Incident Name		Operations Section Chief-Line	R Anderson; M Friend (t)
2. Date Prepared 09/05/13		Operations Section Chief-Planning	K Smihula; M Boomer (t)
3. Time Prepared 1015		<b>a. Branch I - Division/Groups</b>	
4. Operational Period 09/06/13 Friday DAY Shift 0600 - 2030			
Position	Name	HELLS CANYON FIRE	C Trudeau; D Radar (t)
<b>5. Incident Commander and Staff</b>		Division/Group A	
Incident Commander	Mike Whalen; Mark Rosenthal	Division/Group C	
Incident Commander (t)	Steve Millert	Division/Group F	
Safety Officer	J Nishikida; J Brollier; C Fisher (T)	Division/Group	
Information Officer	Rhonda Bishop; Robin Broyles(t)	Division/Group	
Liaison Officer	Aaron Baldrige	<b>b. Branch II - Division/Groups</b>	
<b>6. Agency Representative</b>		RAFT FIRE	
Agency	Name	Division/Group N	Unstaffed
USFS	Keith Lannon, Forest Supervisor	Division/Group Q	R Washburn; D Gibbons (t)
USFS	Greg Lesch, District Ranger	Division/Group S	P Naman; E Nolan(t)
BLM	Terry Humphrey, Field Manager	Division/Group W	C Jones; T Hecht (t)
BLM	Matt McCoy	Division/Group Z	D Walker; Baxter (t)
STATE OF IDAHO	S. Corkill, Area Mgr Payette Lks	Division/Group	
<b>7. Planning Section</b>		<b>c. Branch III - Division/Groups</b>	
Chief	Shawn McEvers		
Deputy			
Resources Unit	Bob Reese; Wade Burleson	Division/Group IA	
Situation Unit	Mark Bohach	Division/Group	
Documentation Unit	Terri Berger	Division/Group	
Demobilization Unit	Nadia Eisenbraun	Division/Group	
Fire Behavior Analyst	Ken Rodgers; Dana Cohent (t)	Division/Group	
IMET	Joe Goudsward	<b>d. Air Operations Branch</b>	
Training Specialist	Rose Henderson	Air Operations Branch Director	Bill Hayes
GIS Specialist	Robin Dunn	Helibase Manager	Andy Guest
Computer Specialist	Kevin Hoffman	Air Attack Supervisor	T Delfalco; L Zajance; L Mars
Resource Advisor USFS	Jon Almack	Air Support Supervisor	Eric Taplin
Resource Advisor BLM	Al Tarter	Helicopter Coordinator	
<b>8. Logistics Section</b>		Air Tanker Coordinator	
Chief	John Houk	<b>10. Finance Section</b>	
Deputy		Chief	Darcy Crotteau
Supply Unit	Steve Howell	Deputy	
Facilities Unit	Scott Richey	Time Unit	S Makosky; K Kumiega; E. Joy (t)
Ground Support Unit	Bill Tuggle	EQTR	A Savage; J Frederick
Communications Unit	Bryan Granath	Compensation/Claims Unit	Tracy Nicholson
Medical Unit	Chris Graves; Kathy Saco (t)	Cost Unit	Chuck Joy; L Gaylord (t)
Security Unit	Ann Robins	Prepared by (Resource Unit Leader)	
Food Unit	D Zyzniewski; G Woods(t); B Gratton(t)	Bob Reese	





<b>Division Assignment List</b>	1. Branch	2. Division/Group
	<b>RAFT-N/Q</b>	

3. Incident Name <b>WEISER COMPLEX</b>	4. Operational Period <b>09/06/13 Friday DAY Shift 0600 - 2030</b>
---	---

5. **Operations Personnel**

Operations Chief	<b>R.ANDERSON; M.FRIEND</b>	Division/Group Supervisor	<b>ROBERT WASHBURN; DWAYNE GIBBONS</b>
Operations Chief(Plans)	<b>K.SMIHULA; M. BOOMER</b>	Air Attack Supervisor	<b>LAWRENCE DEFALCO; LARRY L ZAJANC</b>
Branch Director		Safety Officer	<b>J. NISHIKIDA; J. BROLLIER</b>

6. **Resources Assigned this Period**

Strike Team/Task Force/ Resource Designator	Leader	Num of Pers.	Trans. Y/N	Drop Off PT./Time	Pick Up PT./Time

7. Control Operations  
**UNSTAFFED - MONITOR BY AIR.**

8. Special Instructions

9. **Division/Group Communications Summary**

Function	Frequency - RX	Frequency - TX	Tone	System	Channel	System	Channel
Command	164.5750	170.3625	RX/TX 107.2	King	8		
Tactical Div/Group	168.0500	168.0500	RX/TX 107.2	King	1		
Logistics							
Air to Ground	170.0000	170.0000		King	15		
Prepared by (Resource Unit Leader) <b>WADE BURLISON (t)</b>	Approved by (Planning Section Chief) <b>SHAWN MCEVERS</b>			Date Prepared <b>09/05/13</b>	Time Prepared <b>1015</b>		

<b>Division Assignment List</b>	1. Branch	2. Division/Group <b>RAFT-S</b>
---------------------------------	-----------	------------------------------------

3. Incident Name <b>WEISER COMPLEX</b>	4. Operational Period <b>09/06/13 Friday DAY Shift 0600 - 2030</b>
---	---

5. Operations Personnel			
Operations Chief	R.ANDERSON; M.FRIEND	Division/Group Supervisor	PAUL NAMAN; ERIC NOLAN (t)
Operations Chief(Plans)	K.SMIHULA; M. BOOMER	Air Attack Supervisor	LAWRENCE DEFALCO; LARRY L ZAJANC
Branch Director		Safety Officer	J. NISHIKIDA; J. BROLLIER

6. Resources Assigned this Period					
Strike Team/Task Force/ Resource Designator	Leader	Num of Pers.	Trans. Y/N	Drop Off PT./Time	Pick Up PT./Time
IHC ROGUE RIVER 9/13	THOMAS MERRITT	22	N	BENTON SPIKE/0600	BENTON SPIKE/2030
IHC LA GRANDE 9/12	JOSH DIACETIS	21	N	BENTON SPIKE/0600	BENTON SPIKE/2030
HC2IA USFS FREMONT #6 9/14	BRANDON WRIGHT	22	N	BENTON SPIKE/0600	BENTON SPIKE/2030
ENG6 USFS ID-CTF E623 9/13	BRECK KLEIN	3	N	BENTON SPIKE/0600	BENTON SPIKE/2030
TFLD 9/14	CHRIS HENRIE	1	N	BENTON SPIKE/0600	BENTON SPIKE/2030
TFLD (t) 9/14	ROBERT BAILEY (t)	1	N	BENTON SPIKE/0600	BENTON SPIKE/2030
TFLD	INGRAM	1	N	BENTON SPIKE/0600	BENTON SPIKE/2030
TFLD (t) 9/12	MICHAEL KOLB (t)	1	N	BENTON SPIKE/0600	BENTON SPIKE/2030
SOF2 9/14	LANCE ROBERTS	1	N	BENTON SPIKE/0600	BENTON SPIKE/2030
EMTF	WILL SLOOP	1	N	BENTON SPIKE/0600	BENTON SPIKE/2030
EMTF	RYAN GREGORY	1	N	BENTON SPIKE/0600	BENTON SPIKE/2030
EMTF	GARY FORD	1	N	BENTON SPIKE/0600	BENTON SPIKE/2030

7. Control Operations

CONSTRUCT LINE WEST INTO COTTONWOOD CREEK.  
 ENGINES PATROL AND SECURE FIRELINE.  
 BEGIN REHAB OF SECURE HANDLINE AS PER RESOURCE ADVISOR INSTRUCTIONS.  
 IDENTIFY IA RESOURCES.

8. Special Instructions

PREPARE FOR WET WEATHER.

9. Division/Group Communications Summary							
Function	Frequency - RX	Frequency - TX	Tone	System	Channel	System	Channel
Command	164.5750	170.3625	RX/TX 107.2	King	8		
Tactical Div/Group	166.7250	166.7250	RX/TX 107.2	King	4		
Logistics							
Air to Ground	170.0000	170.0000		King	15		
Prepared by (Resource Unit Leader) WADE BURLESON (T)			Approved by (Planning Section Chief) SHAWN MCEVERS			Date Prepared 09/05/13	Time Prepared 1015

<b>Division Assignment List</b>			1. Branch		2. Division/Group <b>RAFT-W</b>		
3. Incident Name <b>WEISER COMPLEX</b>			4. Operational Period <b>09/06/13 Friday DAY Shift 0600 - 2030</b>				
5. Operations Personnel							
Operations Chief		R.ANDERSON; M.FRIEND		Division/Group Supervisor		CASEY JONES; TYLER HECHT (t)	
Operations Chief(Plans)		K.SMIHULA; M. BOOMER		Air Attack Supervisor		LAWRENCE DEFALCO; LARRY L ZAJANC	
Branch Director				Safety Officer		J. NISHIKIDA; J. BROLLIER	
6. Resources Assigned this Period							
Strike Team/Task Force/ Resource Designator		Leader		Num of Pers.	Trans. Y/N	Drop Off PT./Time	Pick Up PT./Time
IHC LONE PEAK 9/7		KRIS BRUINGTON		21	N	WHISKEY SPIKE/0600	WHISKEY SPIKE/2030
IHC CRAIG 9/14		SHAWN TELFORD		22	N	WHISKEY SPIKE/0600	WHISKEY SPIKE/2030
HC2IA KANSAS MID PLAINS 9/6		ALFONSO MONTOYA		21	N	WHISKEY SPIKE/0600	WHISKEY SPIKE/2030
HC2IA WALLOWA WHITMAN 3 9/12		ANDREW HAYES		20	N	WHISKEY SPIKE/0600	WHISKEY SPIKE/2030
HC2IA USFS CENTENNIAL 9/9		CHRISTOPHER COLE		18	N	WHISKEY SPIKE/0600	WHISKEY SPIKE/2030
HC2 BIA SHOBAN #2 9/13		LYMAN TISSIDIMIT		20	N	WHISKEY SPIKE/0600	WHISKEY SPIKE/2030
ENG4 BLM E1445 9/14		JOSHUA LAMBERT		3	N	WHISKEY SPIKE/0600	WHISKEY SPIKE/2030
ENG4 USFS BOF 461 9/12		BEAU BURLEY		7	N	WHISKEY SPIKE/0600	WHISKEY SPIKE/2030
ENG4 USFS NV-HTF 452 9/14		BRIAN V GERMAN		5	N	WHISKEY SPIKE/0600	WHISKEY SPIKE/2030
EXCAVATER						WHISKEY SPIKE/0600	WHISKEY SPIKE/2030
WTT2 PVT ULTIMATE 10 9/14		JOSEPH MOYLAN		2	N	WHISKEY SPIKE/0600	WHISKEY SPIKE/2030
DOZ3 PVT ARMITAGE CONT 2 9/16		STEVE NEWMAN		2	N	WHISKEY SPIKE/0600	WHISKEY SPIKE/2030
HEQB 9/14		TODD CAMPBELL		1	N	WHISKEY SPIKE/0600	WHISKEY SPIKE/2030
HEQM 9/13		MARK GIBBONS		1	N	WHISKEY SPIKE/0600	WHISKEY SPIKE/2030
SOF2 9/14		ROBERT SHOEMAKER		1	N	WHISKEY SPIKE/0600	WHISKEY SPIKE/2030
SOF2 (t)		S. HOUSTON (t)		1	N	WHISKEY SPIKE/0600	WHISKEY SPIKE/2030
7. Control Operations							
<p>SECURE, MOPUP LINES AND MONITOR SWITCHBACKS          BEGIN REHAB OF INDIRECT LINE AS PER RESOURCE AIVISOR DIRECTION</p>							
8. Special Instructions							
<p>PREPARE FOR WET WEATHER.</p>							
9. Division/Group Communications Summary							
Function	Frequency - RX	Frequency - TX	Tone	System	Channel	System	Channel
Command	164.5750	170.3625	RX/TX 107.2	King	8		
Tactical Div/Group	166.7750	166.7750	RX/TX 107.2	King	5		
Logistics							
Air to Ground	170.0000	170.0000		King	15		
Prepared by (Resource Unit Leader) WADE BURLESON (T)			Approved by (Planning Section Chief) SHAWN MCEVERS		Date Prepared 09/05/13		Time Prepared 1015



<b>Division Assignment List</b>	1. Branch	2. Division/Group <b>RAFT-W</b>
---------------------------------	-----------	------------------------------------

3. Incident Name <b>WEISER COMPLEX</b>	4. Operational Period <b>09/06/13 Friday DAY Shift 0600 - 2030</b>
---	---

5. **Operations Personnel**

Operations Chief	<b>R.ANDERSON; M.FRIEND</b>	Division/Group Supervisor	<b>CASEY JONES; TYLER HECHT (t)</b>
Operations Chief(Plans)	<b>K.SMIHULA; M. BOOMER</b>	Air Attack Supervisor	<b>LAWRENCE DEFALCO; LARRY L ZAJANC</b>
Branch Director		Safety Officer	<b>J. NISHIKIDA; J. BROLLIER</b>

6. **Resources Assigned this Period**

Strike Team/Task Force/ Resource Designator	Leader	Num of Pers.	Trans. Y/N	Drop Off PT./Time	Pick Up PT./Time
TFLD 9/14	CLAY STEPHENS	1	N	WHISKEY SPIKE/0600	WHISKEY SPIKE/2030
TFLD (t) 9/15	ASHLEIGH DANTONIO (t)	1	N	WHISKEY SPIKE/0600	WHISKEY SPIKE/2030
TFLD	CAROLYN A WARDEN	1	N	WHISKEY SPIKE/0600	WHISKEY SPIKE/2030
TFLD 9/14	ROBERT MATHESON	1	N	WHISKEY SPIKE/0600	WHISKEY SPIKE/2030
TFLD (t) 9/15	MAUREEN MCPHEE (t)	1	N	WHISKEY SPIKE/0600	WHISKEY SPIKE/2030
FALC	PRICHER	1	N	WHISKEY SPIKE/0600	WHISKEY SPIKE/2030
BCMG 9/14	MICHAEL JAMES BLACK	1	N	WHISKEY SPIKE/0600	WHISKEY SPIKE/2030
BCMG 9/15	JANET G LADD	1	N	WHISKEY SPIKE/0600	WHISKEY SPIKE/2030
AEMF	JEREMY OLSON	1	N	WHISKEY SPIKE/0600	WHISKEY SPIKE/2030
EMPF	ANNA MARTIN	1	N	WHISKEY SPIKE/0600	WHISKEY SPIKE/2030
EMPF	KEVIN MCMAHON	1	N	WHISKEY SPIKE/0600	WHISKEY SPIKE/2030

7. Control Operations

SECURE, MOPUP LINES AND MONITOR SWITCHBACKS  
CONTINUE TO REHAB AS PER RESOURCE ADVISOR DIRECTION

8. Special Instructions

PREPARE FOR WET WEATHER.

9. **Division/Group Communications Summary**

Function	Frequency - RX	Frequency - TX	Tone	System	Channel	System	Channel
Command	164.5750	170.3625	RX/TX 107.2	King	8		
Tactical Div/Group	166.7750	166.7750	RX/TX 107.2	King	5		
Logistics							
Air to Ground	170.0000	170.0000		King	15		

Prepared by (Resource Unit Leader) <b>WADE BURLESON (T)</b>	Approved by (Planning Section Chief) <b>SHAWN MCEVERS</b>	Date Prepared <b>09/05/13</b>	Time Prepared <b>1015</b>
--	--	----------------------------------	------------------------------



<b>Division Assignment List</b>	1. Branch	2. Division/Group <b>RAFT-Z</b>
---------------------------------	-----------	------------------------------------

3. Incident Name <b>WEISER COMPLEX</b>	4. Operational Period <b>09/06/13 Friday DAY Shift 0600 - 2030</b>
---	---

**5. Operations Personnel**

Operations Chief	<b>R.ANDERSON; M.FRIEND</b>	Division/Group Supervisor	<b>WALKER; BAXTER (t)</b>
Operations Chief(Plans)	<b>K.SMIHULA; M. BOOMER</b>	Air Attack Supervisor	<b>L DEFALCO; L ZAJANC</b>
Branch Director		Safety Officer	<b>J. NISHIKIDA; J. BROLLIER</b>

**6. Resources Assigned this Period**

Strike Team/Task Force/ Resource Designator	Leader	Num of Pers.	Trans. Y/N	Drop Off PT./Time	Pick Up PT./Time
HC2IA FS FISHLAKE REGULARS 9/14	TREVOR RIDING	19	N	WHISKEY SPIKE 0600	WHISKEY SPIKE 2030
EMPF	HUSTON TODD	1	N	WHISKEY SPIKE 0600	WHISKEY SPIKE 2030

7. Control Operations

REHAB ALL FIRE LINE PER DIRECTION FROM THE RESOURCE ADVISORS.

8. Special Instructions

PREPARE FOR WET WEATHER.

**9. Division/Group Communications Summary**

Function	Frequency - RX	Frequency - TX	Tone	System	Channel	System	Channel
Command	164.5750	170.3625	RX/TX 107.2	King	8		
Tactical Div/Group	168.2500	168.2500	RX/TX 107.2	King	6		
Air to ground	170.0000	170.0000		King	15		
Air to Ground							

Prepared by (Resource Unit Leader) <b>WADE BURLESON (T)</b>	Approved by (Planning Section Chief) <b>SHAWN MCEVERS</b>	Date Prepared <b>09/05/13</b>	Time Prepared <b>1015</b>
--	--	----------------------------------	------------------------------

<b>Division Assignment List</b>			1. Branch		2. Division/Group <b>ROAD REHAB</b>		
3. Incident Name WEISER COMPLEX			4. Operational Period 09/06/13 Friday DAY Shift 0600 - 2030				
5. Operations Personnel							
Operations Chief		RANDY ANDERSON; MIKE FRIEND (t)		Division/Group Supervisor			
Operations Chief-Planning		K. SMIHULA; M. BOOMER (t)		Air Attack Supervisor		LAWRENCE DEFALCO; LARRY ZAJANC	
Branch Director				Safety Officer		J NISHIKIDA; J BROLLIER; C FISHER	
6. Resources Assigned this Period							
Strike Team/Task Force/ Resource Designator		Leader		Num of Pers.	Trans. Y/N	Drop Off PT./Time	Pick Up PT./Time
WTS2 PVT WEBER FIRE DIST 266 9/14		JOSEPH GANNON		1	N	ICP 0600	ICP 2030
PAYETTE GRADER				1	N	ICP 0600	ICP 2030
7. Control Operations							
REHAB ROADS AS PER RESOURCE ADVISORS AND DISTRICT ENGINEER.							
8. Special Instructions							
PREPARE FOR WET WEATHER.							
9. Division/Group Communications Summary							
Function	Frequency - RX	Frequency - TX	Tone	System	Channel	System	Channel
Command	164.5750	170.3625	RX/TX 107.2	King	8		
Tactical Div/Group	168.2000	168.2000	RX/TX 107.2	King	2		
Logistics							
Air to Ground	170.0000	170.0000		King	15		
Prepared by (Resource Unit Leader)			Approved by (Planning Section Chief)			Date Prepared	Time Prepared
						09/05/13	1931

# Air Operations Summary

Prepared by  
Bill Hayes

Date Prepared  
09/05/13  
Sunrise  
0716  
Sunset  
2014

1. Incident Name  
WEISER COMPLEX  
2. Operational Period  
09/06/13 Friday DAY Shift 0600 - 2030

3. REMARKS (Safety Notes, Hazards, Air Operations Special Equipment, etc.):

- High Voltage line near Brownie Reservoir
- High Voltage lines between Hells Canyon and Raft fires.
- MTR between helibase and the Incident (deconflicted)
- FAA Tower in McCall: Approach - 118.350, Ground - 120.525

4. MEDEVAC AIRCRAFT:

H-212 (Rappell)

5. TFR:  
Raft TFR: 3/9122  
Hells Canyon TFR: 3/9005

6. PERSONNEL	Phone #	7. FREQUENCY	AMI RX/TX	FM RX/TX	8. FIXED-WING	# Avail/Type/Make-Model/FAA#/Base(s)
AOBD	Bill Hayes	Raft Air to Air	133.950			
ASGS	Eric Taplin	Raft RW	135.550			
HEB1	Jay Matsen	Hells Canyon Air to Air	124.550		Leadplanes Base FAX#:	
ATGS	Tony DeFalco	Hells Canyon RW	127.800			
ATGS	Larry Zajance	Raft A/G		170.0000	Air Attack	(A-5) 5DM/ King Air, (A-10) 9GW/ AC 500S, (A-11) OTC/ AC500
ATGS	Larry Mars	Hells Canyon A/G		166.6750		
HLB	Midvale Helibase	Deck		163.1000		
FAO	Matt Shaddle					

## 9. HELICOPTERS (Use additional Sheets As Necessary)

FAA N#	TY	MAKE/MODEL	BASE	AVAIL	START	REMARKS	FAA N#	TY	MAKE/MODEL	BASE	AVAIL	START	REMARKS
226GM	3	Bell 206L4	Midvale	0900	0930	H-6GM A-2							
351FW	3	AS-350-B2	Midvale	0900	0930	H-1FW A-8							
2773H	2	Bell 205A1	Midvale	0900	0930	H-73H A-43							
212KA	2	Bell 212	Midvale	0900	0930	H-212 A-21							
217AC	1	S-64E	Midvale	0900	0930	HT-737 A-13							
218AC	1	S-64E	Midvale	0900	0930	HT-741 A-6							

ICS 220

Final

**Air Operations Summary**

Prepared by  
Bill Hayes

1. Incident Name  
**WEISER COMPLEX**  
2. Operational Period  
09/06/13 Friday DAY Shift 0600 - 2030

Date Prepared  
09/05/13  
Sunrise  
0716  
Sunset  
2014

Time Prepared  
1930

**9. HELICOPTERS (Continued)**

FAA N#	TY	MAKE/MODEL	BASE	AVAIL	START	REMARKS	FAA N#	TY	MAKE/MODEL	BASE	AVAIL	START	REMARKS

**10. TASK/MISSION/ASSIGNMENT (Type/Function Includes: Air Tactical, Retardant, Recon, Personnel Transport, Water Dropping, S&R, etc.)**

TYPE/FUNCTION	NAME OF PERSONNEL OR CARGO (if applicable) OR INSTRUCTIONS FOR TACTICAL AIRCRAFT	MISSION START	FLY FROM	FLY TO
Recon	As requested	TBA	HLB	Fire
Water Delivery	As requested	TBA	HLB	TBA
Cargo Delivery	As requested	TBA	HLB	TBA





# INCIDENT Weather Forecast



FORECAST NO: 6  
 PREDICTION FOR: Day Shift  
 SHIFT DATE: Friday 9/06/13  
 TIME AND DATE  
 FORECAST ISSUED: 2000 9/05/2013

NAME OF FIRE: Weiser Complex  
 UNIT: Payette National Forest  
 SIGNED: Joe Gounsward  
 Incident Meteorologist

...Significant Pattern Change is under way...

## WEATHER DISCUSSION:

A cold front continues to push its way across the state this morning ushering in a cooler but considerably drier air mass to the region. The upper level low pressure system partly responsible for the unsettled weather of late, is now located over northern Oregon. This system is expected to move to the east/northeast through the weekend and end up in northern Montana by Sunday evening. Left over moisture will continue to rotate around the departing system and some of that could brush the incident and possibly produce a stray shower or thunderstorm. Breezy conditions are expected behind the boundary but surface high pressure will settle over the region for the weekend bringing decreased winds and near normal temperatures with it.

## WEATHER FORECAST FOR TODAY:

WEATHER: Mostly sunny and breezy with a 10% chance of showers or thunderstorms.  
 TEMPERATURES: 3500-5500 feet: 81 to 86 Over 5500 feet: 77 to 82  
 HUMIDITY: 20 to 29%  
 20 FT WINDS:  
   RIDGETOP -: Southwest 8 to 15 mph with gusts of 30 mph.  
   SLOPE/VALLEY -: Light upslope/up valley becoming southwest 10 to 15 mph with gusts of 20 mph.  
 CWR: 10%                                      LAL: 2                                      HAINES INDEX: 3  
 STABILITY/INVERSION: Weak inversion until 11 A.M...mixing height 6500 -7500 ft AGL

## WEATHER FOR TONIGHT:

WEATHER: Partly cloudy with a 10% chance of showers and thunderstorms.  
 TEMPERATURES: 3500-5500 feet: 49 to 56 Over 5500 feet: 42 to 49  
 HUMIDITY: 58 to 68%  
 20 FT WINDS:  
   RIDGETOP -: South to Southeast 10 to 18 mph with gusts near 20 mph.  
   SLOPE/VALLEY -: Southwest 10 to 15 mph with gusts of 20 mph in the evening becoming light downslope by morning.  
 CWR: 10%                                      LAL: 2                                      HAINES INDEX: 3

## WEATHER FORECAST FOR SATURDAY:


WEATHER: Partly cloudy with a 10% chance of showers and thunderstorms.  
 TEMPERATURES: 3500-5500 feet: 77 to 84 Over 5500 feet: 70 to 77  
 HUMIDITY: 15 to 24%  
 20 FT WINDS:  
   RIDGETOP -: Northwest 8 to 15 mph.  
   SLOPE/VALLEY -: Light upslope/up valley becoming northwest 6 to 12 mph.  
 CWR: 10%                                      LAL: 2                                      HAINES INDEX: 3

## EXTENDED FORECAST: Sunday through Tuesday

Sunday: Partly to mostly sunny. Lows 42 to 51. Highs 70 to 79. Northwest winds around 10 mph  
 Monday: Partly to mostly sunny. Lows 44 to 53. Highs 71 to 80. North winds around 10 mph  
 Tuesday: Partly to mostly sunny. Lows 43 to 52. Highs 75 to 84. Northeast winds around 10 mph.

If you have any weather observation from this incident, please provide them to the IMET

# FIRE BEHAVIOR FORECAST

FORECAST NUMBER: 6	TYPE OF FIRE: Wildland Fire
FIRE NAME: Weiser Complex	OPERATIONAL PERIOD: Day Shift, September 6, 2013
DATE ISSUED: September 5, 2013	TIME ISSUED: 2000
UNIT: Payette NF / Four Rivers BLM	SIGNED: /s/ Ken Rodgers FBAN 

## INPUTS

WEATHER SUMMARY: Mostly sunny with slight chance of showers or thunderstorms  
-See Attached Forecast-

## OUTPUTS

### FIRE BEHAVIOR

#### GENERAL:

Very low to low burning activity is anticipated to occur on the fire today because of rainfall received in the last two days. Smoldering and limited surface burning in timber stands/stringers can be expected in areas of the fire that are sheltered from rain, like under a thick tree canopy. Burning could increase intensity slightly as the day progresses as sunshine and wind dries surface fuels. This burning could extend into the night especially in down logs and debris on the forest floor.

#### SPECIFIC:

##### Hells Canyon

This fire is cold and not anticipated to have any burn activity.

##### Raft

Divisions N, Q & Z: Isolated hot spots are still possible in locations with shrub and tree patches, such as, drainage bottoms.

Divisions S & W: Timbered fuels in these divisions are where any burn activity on the fire will likely happen today. Burning in grass and brush fuels is doubtful unless they are dried out by sunshine and wind. Burnout operations on indirect control lines would have limited success at this time due to recent rains.

Initial Attack Actions: Potential for burning and fire spread on new starts will be limited, especially in grass fuel types.

#### AIR OPERATIONS:

Visibility for air operations may be limited in the morning due to low clouds. Turbulence can be expected with afternoon or thunderstorm winds over the fire and dip sites. Clouds and thunderstorm activity could also limit visibility and suitability for operations in the afternoon.

## SAFETY

Remember Standard Firefighting Order #2 – Know What Your Fire is Doing at All Time

Maintain Situational Awareness

IRAWS talk! Rx/Tx 163.350, DTMF must be engaged. While transmitting, key in **0032** for Brownlee and **0035** for Dennett Creek

**3. Basic Radio Channel Utilization**

Radio Type	Channel	Function	Frequency/Tone		Assignment	Remarks
King	1	TAC 1	RX 168.0500	TX 168.0500	DIV A & Q	
			RX/TX 107.2			
King	2	TAC 2	RX 168.2000	TX 168.2000	AVAILABLE AS NEEDED	
			RX/TX 107.2			
King	3	TAC 3	RX 168.6000	TX 168.6000	AVAILABLE AS NEEDED	
			RX/TX 107.2			
King	4	TAC 4	RX 166.7250	TX 166.7250	DIV S	
			RX/TX 107.2			
King	5	TAC 5	RX 166.7750	TX 166.7750	DIV W	
			RX/TX 107.2			
King	6	TAC 6	RX 168.2500	TX 168.2500	DIV Z & IA	
			RX/TX 107.2			
King	7	CMD 7	RX 163.0375	TX 170.0250	ALL DIV	CMD NET AT STURGIL
			RX/TX 107.2			
King	8	CMD 8	RX 164.5750	TX 170.3625	ALL DIV	CMD NET AT LOOKOUT
			RX/TX 107.2			
King	9	CMD 9	RX 166.6125	TX 168.4000	ALL DIV	CMD NET
			RX/TX 107.2			
King	11	STURGIL	RX 171.5500	TX 172.3500	LINK TO DISPATCH	EMERGENCY USE ONLY
			TX 123.0			
King	13	AIR AMBULANCE	RX 155.2800	TX 155.2800	AIR AMBULANCE	A/G EMS F2
			Tone 156.7			
King	14	A/G HELL'S	RX 166.6750	TX 166.6750	HELL'S CANYON A/G	
King	15	A/G RAFT	RX 170.0000	TX 170.0000	RAFT A/G	
King	16	AIR GUARD	RX 168.6250	TX 168.6250	EMERGENCY USE ONLY	
			TX 110.9			

# HEALTH AND SAFETY MESSAGE

*SAFETY* starts with *YOU*

We are ALL accountable for SAFE behaviors

INCIDENT: Weiser Complex

DATE: 9-06-2013

Oper. Period: Day

## Major Hazards and Risks:

**Driving**

**Complacency**

**Personal Health**

### Fire Order of the Day – Retain control at all times:

#### **Driving**

Let's face it-the roads have been wet, slippery, and have are covered with debris. The road below above sturgis creek has is getting worse with mud from the fire flowing over the route in multiple areas. With the rain continuing it will not improve. Scout road and ensure its drivable and if not safe avoid the fire area. Continue to maintain safe speeds and watch out for local drivers who may forget the traffic level.

#### **Complacency**

As the fire begin to wind down, we have a tendency to loose sight of the tasks at hand and let our mind wander. Stay focused on the tasks at hand, which will ensure reduced potential for problems. The start stop tempo caused by incoming weather, not to mention sleep lost due to stormy, wet nights make it hard to stay focused...if necessary slow your pace to properly take in the hazards around you.

#### **Personal Health**

Ensure during this inclement weather you take the time to dry out wet gear and clothing. Continue to eat and hydrate regularly. Stay as warm and dry as possible. Wash hands as often as possible to cut down on spread of camp crud.

### **Watch Out Situation of the Day**



## **Complacency**

Just because things are going well now, doesn't mean they can't go horribly wrong at any moment...

### **Look Up, Look Down, Look Around**

**\*Look Up:** Check the sky for any weather changes such as building or approaching thunderstorms, wind shifts or increasing in speed. Watch for air operations and water drops. Look for snags and rolling debris.

**\*Look Down:** Watch your footing. Keep an eye out for snakes, bee nests and observe fine fuels on the ground. Be wary of areas where mud flows have taken place.

**\* Look Around:** Check fuel loading in the area, general terrain, current fire behavior and ladder fuels. Keep an eye on fellow firefighters for signs of heat stress and smoke inhalation. Watch out for hungry bears.



Operational Period Day Shift - 9-06-2013		Weiser Complex 215a		
Hazards	Pre Mitigation	DIV	Mitigation(s), Warnings and Remedies	Post Mitigation
Driving	Extr High	S, W	Slow down - School in session, Narrow roads Practice "Defensive Driving" to and from fire Use spotters when backing and honk horn, use headlights 3 second rule for spacing, use chocks	High
Heat Related Injuries	Hi	S, W	Drink fluids throughout operational period Carry extra water to line and cache water at drop points Take frequent breaks, ex. 10 min for each hr Recognize Heat related symptoms: loss of energy, dizziness, no hunger, hot skin, lack of sweating	Med
Steep Terrain	Extr High	S, W	Use safe line building techniques and spacing Evaluate necessity of personnel for work	Hi
Animals (Bees, Wasps)	Extr High	S, W	If allergic to bee stings, carry EpiPen Notify others and flag hives	Extr Hi
Line Construction Mop Up, Rehab, Patrol Secure line	Extr Hi	S, W	Ensure LCES in place prior to engagement (IRPG page 8) Use Downhill Line Construction (IRPG p8) Utilize Risk Management Process (IRPG, p 1)	Hi
Chain Saw Ops	Extr HI	S, W	Follow "Hazard Tree Guidelines" (IRPG p 20/21) Look Up, Down and Around for hazard trees Only fell and buck trees within your expertise/training Follow "Procedural Felling Ops" (IRPG p 89) Do not fall trees during high wind events	Extr Hi
Public Interaction	Med	ALL	Be alert to non-fire personnel (hunters, vacationers, ranchers) Don't park/block driveways or private roads Report problems in closed areas, don't engage	Lo
Communications	Extr Hi	S	Ensure communications with your supervisor/others Clone radios to ensure have correct frequencies Report any communication problems (bleed over, dead spots, other issue)	Med
Air Ops	Extr High	W	Follow "aviation Watch Out Situations (IRPG p 52) Don't plan on air resources for medical transports Direct bucket drops (IRPG 65) Ensure proper communication with air resources	Extr High
Animals (Bears, Snakes)		S, W	Be vigilant for rattlesnakes, Leave them alone Keep hands and feet out of areas you cannot see Notify others of the presence of snakes	
Dozer Heavy Equipment Operations	Hi	W	Minimize time below dozer Only approach when in eye contact	Med
Toxic Plants	Med	S, W	Recognize Poison Ivy When cutting Sumac, protect airway	Med
ATV/UTV Ops	Hi	S, W	Wear proper PPE per USFS protocols) Drive in control, keep speeds down	Med
Flash Flood	Med	S, W	Stay away from steep terrain & fast moving streams Avoid driving across flooded roads Avoid roads that will impede access/ingress if you believe they will be compromised. Consider leaving the area.	Med
Lightning	Hi		Don't use radios, put down hand tools, Avoid grouping together, sit/crouch, or if in open country stay in vehicle if possible Avoid standing near high objects, ridge tops, open spaces ledges or rock outcroppings Keep away from wire fences; move away from horses/stock	Mod

<b>Medical Plan</b>	1. Incident Name	2. Operational Period
	WEISER COMPLEX	09/06/13 Friday DAY Shift 0600 - 2030

3. Incident Medical Aid Station			
Medical Aid Stations	Location		Paramedics
			Yes No
Weiser Complex ICP 877-706-9718	1205 Pringle Rd Weiser, ID N 44* 17.885 W 117* 02.037		<input checked="" type="checkbox"/> <input type="checkbox"/>
DIV S Benton Spike	N 44* 39.002 W 116* 57.566		<input checked="" type="checkbox"/> <input type="checkbox"/>
DIV W Whiskey Spike	N 44* 34.078 W 117* 01.268		<input checked="" type="checkbox"/> <input type="checkbox"/>
			<input type="checkbox"/> <input type="checkbox"/>
			<input type="checkbox"/> <input type="checkbox"/>

4. Transportation

A. Ambulance Services

Name	Address	Phone	Paramedics	
			Yes	No
* Washington Co. EMS Weiser Ambulance	451 Park St. Weiser, ID 83672	208-414-4257	<input checked="" type="checkbox"/>	<input type="checkbox"/>
* Air St. Luke's	190 E Bannock Street Boise Idaho 83712	208-381-8790	<input checked="" type="checkbox"/>	<input type="checkbox"/>
			<input type="checkbox"/>	<input type="checkbox"/>
	<i>*EMS Air-Grd is called EMS F2 Rx/Tx 155.280 Tx Tone 156.7</i>		<input type="checkbox"/>	<input type="checkbox"/>
	<i>*Communications will order through Payette IA Dispatch</i>		<input type="checkbox"/>	<input type="checkbox"/>
		208-634-2757	<input type="checkbox"/>	<input type="checkbox"/>

B. Incident Ambulances

Name	Location	Paramedics	
		Yes	No
2KA Price Valley Helitack	Midvale Helibase	<input type="checkbox"/>	<input checked="" type="checkbox"/>
	<i>(EHE Capable, Communications will order through Payette IA Dispatch)</i>	<input type="checkbox"/>	<input type="checkbox"/>
		<input type="checkbox"/>	<input type="checkbox"/>
EMPF Stowe (CCFD Suburban)	ICP	<input checked="" type="checkbox"/>	<input type="checkbox"/>
		<input type="checkbox"/>	<input type="checkbox"/>

5. Hospitals

Name	Address/Latitude/Longitude	Travel Time		Phone/Frequency	Helipad		Burn Center	
		Air	Ground		Yes	No	Yes	No
Weiser Memorial Hospital	645 E. 5th St. Weiser, ID 83672 ER 208-549-4480 N44° 14.991 W 116° 58.541 Fax 208-414-3058	10 Min	45 Min	Grd: 155.340 A-G: 155.280 156.7	<input checked="" type="checkbox"/>	<input type="checkbox"/>	<input type="checkbox"/>	<input checked="" type="checkbox"/>
St. Alphonsos Ontario	351 S. W. 9th St. Ontario, OR. 97914 541-881-7100 N 44° 02.557 W 116° 57.957	20 Min	1.2 Hr	Rx/Tx 155.4000 Tone 107.2	<input checked="" type="checkbox"/>	<input type="checkbox"/>	<input type="checkbox"/>	<input checked="" type="checkbox"/>
University of Utah Burn Center (Level 1 Trauma)	50 N. Medical Dr. Salt Lake City, UT 801-581-2700 N40° 46.567 W 111°50.400	2 Hr	6 Hr	Contact Salt Lake Tower for Freq.	<input checked="" type="checkbox"/>	<input type="checkbox"/>	<input checked="" type="checkbox"/>	<input type="checkbox"/>
St Alphonsus Regional Hospital (Level 2 Trauma)	1055 N. Curtis Road Boise, ID 83706 208-367-2121 N 43° 36.800 W 116° 15.200	30 Min	1 Hr	Contact Boise Tower for Freq.	<input checked="" type="checkbox"/>	<input type="checkbox"/>	<input type="checkbox"/>	<input checked="" type="checkbox"/>
St. Lukes Regional Medical Center	190 E. Bannock Street Boise, ID 83712 208- 381-2222 N 43° 36.760 W 116° 11.644	30 Min	1 Hr	Contact Boise Tower for Freq.	<input checked="" type="checkbox"/>	<input type="checkbox"/>	<input type="checkbox"/>	<input checked="" type="checkbox"/>

6. Medical Emergency Procedures

**FOR ALL MEDICAL EMERGENCIES: IDENTIFY POINT OF CONTACT (POC), POSITION AND ANNOUNCE "MEDICAL EMERGENCY" TO INITIATE RESPONSE FROM IMT COMMUNICATIONS/DISPATCH**

See attached ICS 206A **EMS Air-Ground is called EMS F2 Rx/Tx 155.280 Tx Tone 156.7**

7. Prepared by (Medical Unit Leader) Chris Graves	8. Reviewed by (Safety Officer) Joe Nishikida / Justin Brollier / Chad Fisher (t)	9. Date Prepared 09/05/13	10. Time Prepared 1846
--	--	------------------------------	---------------------------

# ICS 206 A

## Life Threatening Medical Emergency Communication Procedures

### Medical Life Threatening Procedures

In the event of a medical emergency the On-Scene Point of Contact (POC) will provide the following information to Communications

1. Declare the nature of the emergency.
  - a. Medical injury/illness? Is it life threatening?
2. If Life threatening, request that the designated frequency be cleared for emergency traffic
3. Identify the On-Scene Point of Contact (POC) by resource and last name (i.e. POC is TFLD Smith)
4. Identify nature of incident, number injured, patient assessment(s) and location (geographic and GPS coordinates)
5. Identify on-scene medical personnel by position and name (i.e. EMT Jones)
6. Identify preferred method of patient transport
7. Request any additional resources and/or equipment needed
8. Document all information received and transmitted on the radio or phone
9. Identify any changes in the On-Scene POC or medical personnel as they occur

The identified Med-Evac helicopter for the Weiser Complex is 2KA located at Midvale.

Note: For life flight helicopter evacuations contact and work directly with the Initial Attack Payette Dispatch organization. The Payette Forest has in place a pre-arranged system of mobilizing and coordinating contact with the hospital/ambulance service (or Life Flight/Guardian—as situation applies), comp/claims personnel, flight-following, and airspace control at the airport and helibase(s). Outside calls to any of the above confuse the system and may slow the overall process.

Division Branch Group	Area / Location / Capability
<b>Raft N</b>	EMS Responders & Capability: Unstaffed Equipment Available on Scene: Medical Emergency Channel: Command <div style="text-align: right;">Ch. 13 EMS F2 Air to Ground Rx/Tx 155.280 Tx Tone 156.7</div> ETA for Ambulance to Scene: Air: 1 hour Ground: 3 hours Approved Helispot: H-2 Lat: Long:
<b>Raft Q</b>	EMS Responders & Capability: Unstaffed Equipment Available on Scene: ALS Medical Emergency Channel: Command <div style="text-align: right;">Ch. 13 EMS F2 Air to Ground Rx/Tx 155.280 Tx Tone 156.7</div> ETA for Ambulance to Scene: Air: 1 hour Ground: 3 hours Approved Helispot: Lat: Long:
<b>Raft S</b>	EMS Responders & Capability: Will Sloop EMTF / Ryan Gregor EMPF / Gary Ford EMPF Equipment Available on Scene: ALS Medical Emergency Channel: Command <div style="text-align: right;">Ch. 13 EMS F2 Air to Ground Rx/Tx 155.280 Tx Tone 156.7</div> ETA for Ambulance to Scene: Air: 1 hour Ground: 3 hours Approved Helispot: Lat: Long:





<b>ICP</b>	<b>Point of Contact: MEDL Chris Graves / Austin Stowe EMPF / Jonathon Grimes EMPF</b> <b>EMS Responders &amp; Capability: ALS</b> <b>Equipment Available on Scene: CCFD Suburban will be utilized for incident ambulance</b> <b>Medical Emergency Channel: Command</b> <b>Ch. 13 EMS F2 Air to Ground Rx/Tx 155.280 Tx Tone 156.7</b> <b>ETA for Ambulance to Scene: EMS Ground to Hosp. 155.340</b> <b>Air: 20 minutes</b> <b>Ground: 20 minutes</b> <b>Approved Helispot:</b> <b>Lat:</b> <b>Long:</b>
<b>Midvale HB</b>	<b>Point of Contact: Price Valley Helitack</b> <b>EMS Responders &amp; Capability: BLS</b> <b>Equipment Available on Scene: EHE, Trauma kit, C-spine</b> <b>Medical Emergency Channel: Command Ch. 13 EMS Air to Ground 155.280</b> <b>ETA for Ambulance to Scene:</b> <b>Air: 1 hour</b> <b>Ground: 3 hours</b> <b>Approved Helispot: Midvale HB</b> <b>Lat:</b> <b>Long:</b>
<b>Prepared By</b> <b>Chris Graves, MEDL</b> <b>Date: 9/3/2013</b>	
<b>Reviewed By (Safety Officer)</b> <b>Joe Nishikida / Justin Brollier / Chad Fisher (t)</b> <b>Date: 9/3/2013</b>	

Location Name	Longitude	Latitude
H-1	-117 5.725'	44 29.392'
H-3	-117 6.608'	44 29.360'
H-2 Spike	-117 8.348'	44 34.001'
DP-1	-117 9.636'	44 29.126'
DP-2	-117 8.007'	44 33.804'
DP-10 Spike	-117 3.536'	44 40.732'
DP-20	-116 58.742'	44 38.812'
DP-30	-116 59.564'	44 36.118'
DP-55 Spike	-117 1.268'	44 34.078'
DP-40 Whiskey Spike	-117 1.259'	44 35.089'
Benton Spike	-116 57.566'	44 39.002'

Medical – 9 Line Information

Line	Information	Notes
1	Level of Severity	Triage page 48, IRPG - 2011
<input type="checkbox"/>	RED – (Airway obstruction, Difficulty Breathing, Major blood loss, Cardiac Chest pain, Crush injury to the chest, Penetrating object, Open fracture, 2° or 3° burn more than 4 palms)	Code 3 ALS ambulance or Medivac Helicopter Medical radio traffic has priority Emergency radio traffic restricted to: On Site Medical, Division Supervisor or On Scene IC
<input type="checkbox"/>	YELLOW – (Closed fracture, Significant trauma, Lacerations and bleeding no controlled by pressure, Not able to walk, 2° or 3° burn, no more than 1 or 2 palm size)	Ambulance or consider air transport if at remote location Medical radio traffic may have priority as above
<input type="checkbox"/>	GREEN – (Small area abrasions or lacerations, bleeding controlled by pressure, Minor sprain, General sickness)	Ground transport via crew, ground support, field medic or consider air if at remote location Fire radio traffic unchanged
2	Patient Assessment/ Injuries & Treatment	Assessment Page 42, IRPG 2011 Treatment Page 41, 43-47
	Patient # 1 _____ _____ _____	<ul style="list-style-type: none"> <li>• Level of Consciousness</li> <li>• Breathing Rate</li> <li>• Pulse Rate</li> <li>• Skin Condition</li> </ul>
	Patient # 2 _____ _____ _____	Injury Bleeding      Heat Fracture      Burns Head injury      Bee Stings Eye Injury
3	Patient Location	Drop Point, Staging area, Division, Spike Camp, Line Area or GPS
	Lat: _____ Long: _____	Set GPS to WGS 84 Use Degrees, Minutes, tenth of Minutes (00°00.00' – 000°00.00')
4	Special Equipment Needs:	Hoist, SKED, Backboard, Litter, Rope Rescue, Trauma Bag Oxygen, IV Fluids
5	On Scene Medic IC: Whalen	Crew Medic, Field Medic Who is the IC on this incident?
6	AIR GUARD – TX 168.625 / RX 168.625 Command – TX 165.9625N/ RX 170.4125N (NIFC CMD 10) Tactical – TX 169.1500N/ RX 169.1500N (NIFC TAC 8)	What Frequency or channel will the incident be run on?
7	LZ Location / GPS	LZ Area Selection Pages 57, IRPG
	Lat: _____ Long: _____	Set GPS to WGS 84 Use Degrees, Minutes, tenth of Minutes (00°00.00' – 000°00.00')
	Ground Contact:	
8	LZ Special Hazards	Trees, Power lines, wind direction, slope
9	Patient Affiliation	Agency, Contractor, Military

## Training Message

September 6, 2013

Weiser Complex

Keep an open eye on the demob charts for when you may be leaving the incident. If you are able to close out your training assignment in advance it will expedite your demob process. It is preferred that both the TRAINER and the TRAINEE attend the close out session with the training desk.

### *Items you need to bring to the close out session are:*

- *Position Task Book for the assignment.*
- *Any evaluation forms pertinent to the assignment you have received or filled out.*

Thank you.

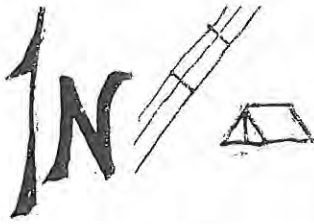


Rose Henderson

Training Specialist

	A	B	C	D
1	Wieser Complex Phone List			
2				
3	SOF2 Team			
4	Justin Brollier		208-863-5404	
5	Joe Nishkida		775-848-9163	
6	Chad Fisher		208-830-4823	
7	IMET		240-778-5279	
8				
9	Medical		877-706-9718	
10	Chris Graves/unit leader		755-233-6613	
11	Kathy Saco (t)		208-303-0242	
12				
13	Communitations		877-721-9297	
14	Logistics		877-712-1547	
15	Finance		877-707-4600	
16	Finance Fax		208-549-2004	
17	Cost		877-693-3315	
18				
19	Ordering		208-549-2391	
20	Demob		208-549-2034	
21	Planning		877-707-2487	
22	Public Info		877-701-8201	
23	Internal		877-700-1438	
24				
25	Ops		877-690-3864	
26	Safety		877-690-3864	
27	Situations		877-691-5219	
28	IC/Meeting Tent		877-726-7218	
29	Price Valley Helibase		208-347-0327	
30	Midvale Helibase		208-355-0018	
31	Sheriff		208-642-6006	



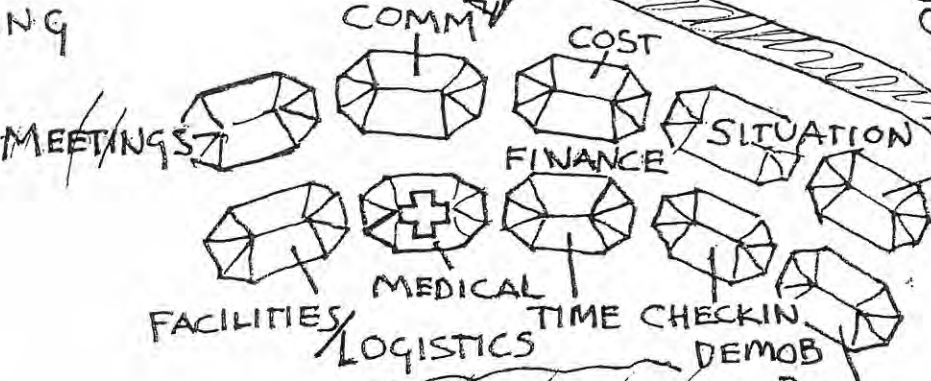


CAMPING

PARKING

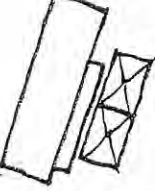
NO CAMPING

SMOKING AREA



SAFETY

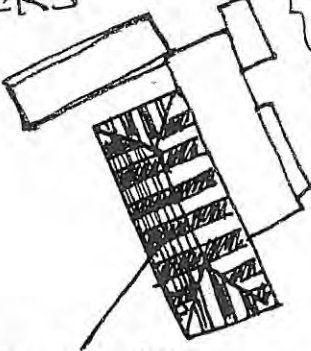
CAMPING



SHOWERS



PARKING



CATERING

INFO

SMOKING AREA

IA PARKING

DUMPSTERS



LUNCHES ICE/WATER

CAMPING

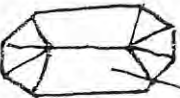


SUPPLY

SECURITY

★ WEISER ★

**BASE CAMP**



GROUND SUPPORT

SOUTHERN PAINTER 24 GENNY

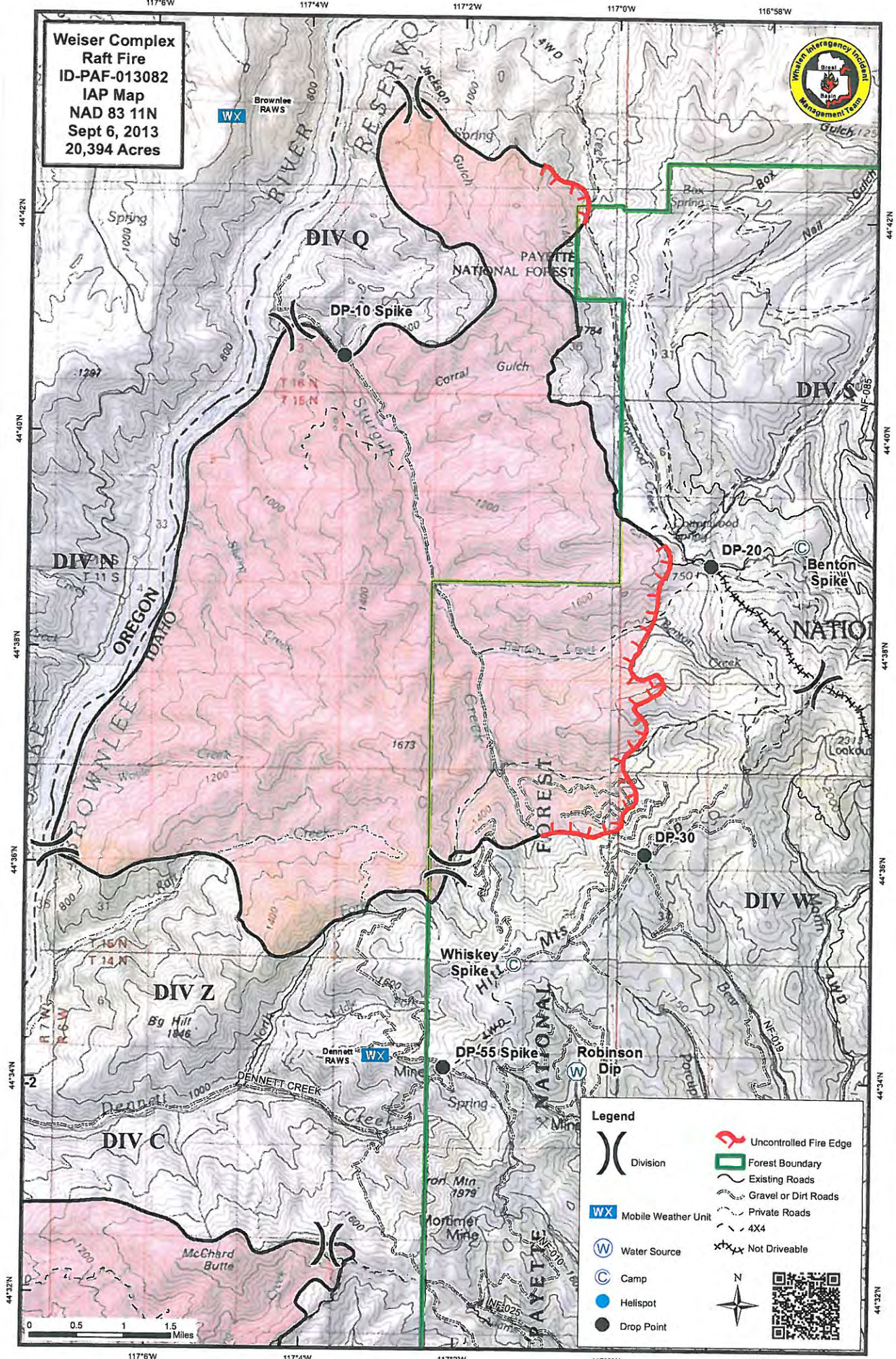
NO CAMPING







**Weiser Complex  
Raft Fire  
ID-PAF-013082  
IAP Map  
NAD 83 11N  
Sept 6, 2013  
20,394 Acres**



**Legend**

- Uncontrolled Fire Edge
- Forest Boundary
- Existing Roads
- Gravel or Dirt Roads
- Private Roads
- 4X4
- Not Drivable
- Mobile Weather Unit
- Water Source
- Camp
- Helispot
- Drop Point

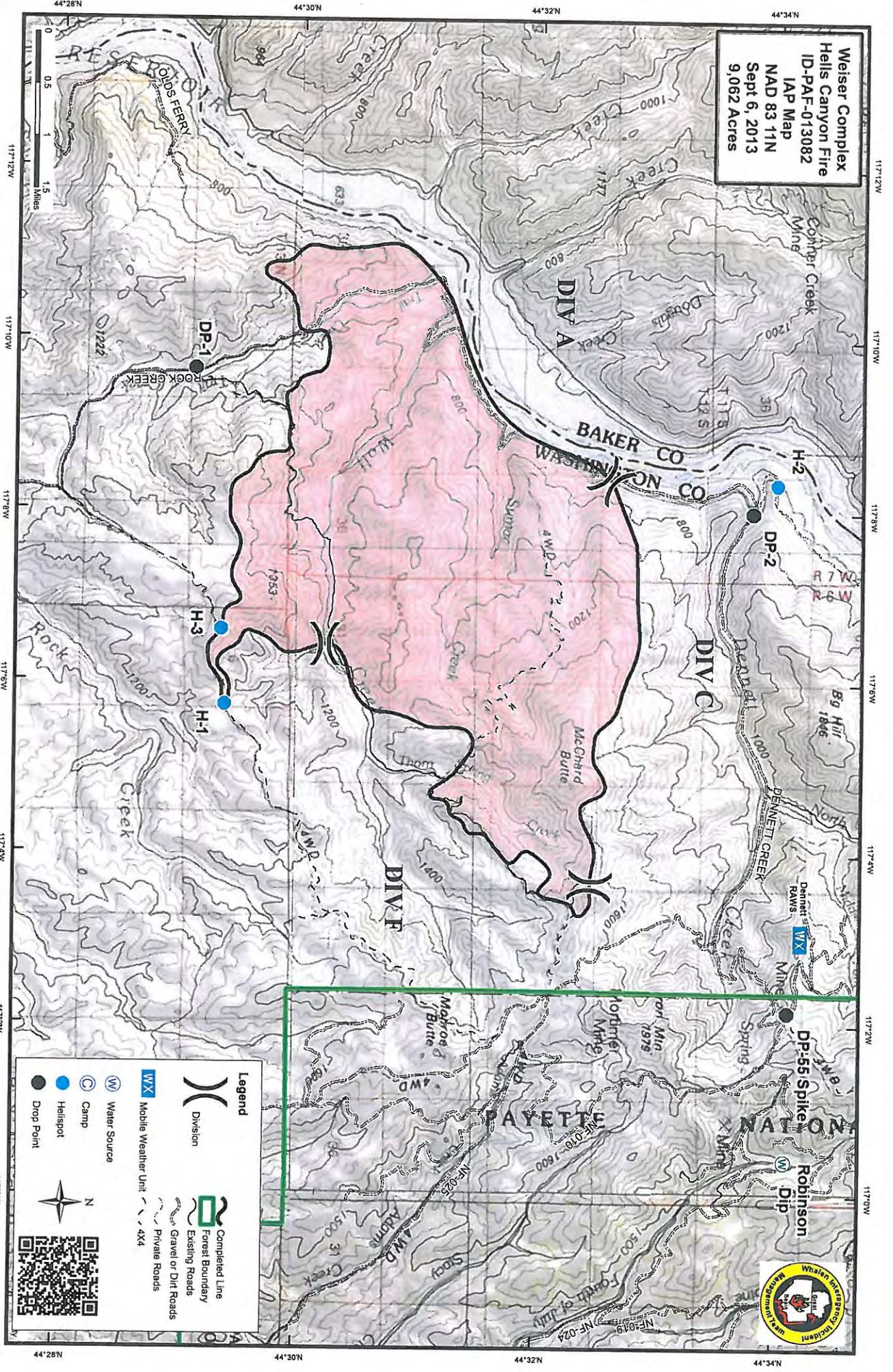
0 0.5 1 1.5 Miles

117°6'W 117°4'W 117°2'W 117°0'W 116°58'W

44°42'N 44°40'N 44°38'N 44°36'N 44°34'N



**Weiser Complex**  
**Hells Canyon Fire**  
 ID-PAF-013082  
 IAP Map  
 NAD 83 11N  
 Sept 6, 2013  
 9,062 Acres



**Legend**

- Division
- Completed Line
- Forest Boundary
- Existing Roads
- Gravel or Dirt Roads
- Private Roads
- Water Source
- Camp
- Helispot
- Drop Point
- Mobile Weather Unit





**Weiser Complex**  
**ID-PAF-013082**  
**Transportation Map**  
**Sept 6, 2013**

