

WEISER COMPLEX

HELLS CANYON & RAFT FIRES

INCIDENT ACTION PLAN

September 7, 2013



Over one hundred years ago with the formation of the United States Forest Service in 1905 the idea of the fire lookout network was born. In the 2.3 million acres of land comprised in today's Payette National Forest over one hundred fire lookout locations were used to protect the forest from fires. Recently only thirteen of those lookouts are in use. The Sturgill Peak Lookout was built in 1932. It is located 27 miles north of Weiser Idaho and is one of the thirteen still in use. The Lookout is staffed in the summer.

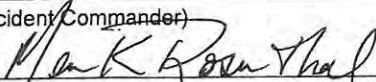
ID-PAF-013082
P4HX4J

payettefireinformation@gmail.com



GPS FORMAT
DATUM NAD 83
N 44° 20.480
W 117° 4.048



Incident Objectives	1. Incident Name WEISER COMPLEX	2. Date Prepared 09/06/13	3. Time Prepared 0650
4. Operational Period 09/07/13 Saturday Day Shift 0600 - 2030			
5. General Control Objectives for the incident (include alternatives) * Safety: Maintain safety of firefighting resources and public as the top priority. * Perimeter Control: Keep fire size as small as practical using perimeter control. * Community and Infrastructure Protection: Prevent fire from further impacting private values, commercial structures and improvements within the impacted area. * Cost: Insure the costs related to fire management are commensurate with the values at risk. * State Lands: Minimize impacts to endowment lands timber, forage base and private forest land by using tactics to keep fire out of these areas. While planning and executing fire suppression actions, be mindful of the financial values associated with State, private timber and forage.			
6. Weather Forecast for Period <p style="text-align: center;">PLEASE SEE ATTACHED WEATHER FORECAST</p>			
7. General Safety Message ** Complacency injures! ** Have situational awareness at all times!			
8. Attachments (mark if attached) <input checked="" type="checkbox"/> Organization List - ICS 203 <input checked="" type="checkbox"/> Incident Map <input checked="" type="checkbox"/> Phone List <input checked="" type="checkbox"/> Div. Assignment Lists - ICS 204 <input checked="" type="checkbox"/> Safety Message <input checked="" type="checkbox"/> Training Message <input checked="" type="checkbox"/> Communications Plan - ICS205 <input checked="" type="checkbox"/> Traffic Plan <input type="checkbox"/> <input checked="" type="checkbox"/> Medical Plan - ICS 206 <input checked="" type="checkbox"/> Fire Behavior <input type="checkbox"/> <input checked="" type="checkbox"/> Air Operations Summary - ICS 220 <input checked="" type="checkbox"/> Fire Weather <input type="checkbox"/>			
9. Prepared by (Planning Section Chief) Shawn McEvers	10. Approved by (Incident Commander) Mark Rosenthal 		

ORGANIZATION ASSIGNMENT LIST			9. Operations Section	
1. Incident Name			Operations Section Chief-Line	Randy Anderson
2. Date Prepared 09/06/13		3. Time Prepared 0651	Operations Section Chief-Planning	K Smihula; M Boomer (t)
4. Operational Period 09/07/13 Saturday Day Shift 0600 - 2030			a. Branch I - Division/Groups	
Position		Name	HELLS CANYON FIRE	Unstaffed
5. Incident Commander and Staff			Division/Group A	
Incident Commander	Mike Whalen; Mark Rosenthal		Division/Group C	
Incident Commander (t)	Steve Millert		Division/Group F	
Safety Officer	J Nishikida; J Brollier; C Fisher (T)		Division/Group	
Information Officer	Rhonda Bishop; Robin Broyles(t)		Division/Group	
Liaison Officer	Aaron Baldridge		b. Branch II - Division/Groups	
6. Agency Representative			RAFT FIRE	
Agency		Name	Division/Group N	Unstaffed
USFS	Keith Lannon, Forest Supervisor		Division/Group Q	Unstaffed
USFS	Greg Lesch, District Ranger		Division/Group S	P Naman; E Nolan(t)
BLM	Terry Humphrey, Field Manager		Division/Group W	C Jones; T Hecht (t)
BLM	Matt McCoy		Division/Group Z	Unstaffed
STATE OF IDAHO	S. Corkill, Area Mgr Payette Lks		Division/Group	
7. Planning Section			c. Branch III - Division/Groups	
Chief	Shawn McEvers			
Deputy				
Resources Unit	Bob Reese; Wade Burluson		Division/Group IA	
Situation Unit	Mark Bohach		Division/Group	
Documentation Unit	Terri Berger		Division/Group	
Demobilization Unit	Nadia Eisenbraun		Division/Group	
Fire Behavior Analyst	Ken Rodgers		Division/Group	
IMET	Joe Goudsward		d. Air Operations Branch	
Training Specialist	Rose Henderson		Air Operations Branch Director	Bill Hayes
GIS Specialist	Robin Dunn		Helibase Manager	Jerry Matsen
Computer Specialist	Kevin Hoffman		Air Attack Supervisor	T Delfalco
Resource Advisor USFS	Jon Almack		Air Support Supervisor	Eric Taplin
Resource Advisor BLM	Al Tarter		Helicopter Coordinator	
8. Logistics Section			Air Tanker Coordinator	
Chief	John Houk		10. Finance Section	
Deputy			Chief	Darcy Crotteau
Supply Unit	Steve Howell		Deputy	
Facilities Unit	Scott Richey		Time Unit	S Makosky; K Kumiega; E. Joy (t)
Ground Support Unit	Bill Tuggle		EQTR	A Savage; J Frederick
Communications Unit	Bryan Granath		Compensation/Claims Unit	Tracy Nicholson
Medical Unit	Chris Graves; Kathy Saco (t)		Cost Unit	Chuck Joy; L Gaylord (t)
Security Unit	Ann Robins		Prepared by (Resource Unit Leader)	
Food Unit	D Zyzniewski; G Woods(t); B Gratton(t)		Bob Reese	

Division Assignment List	1. Branch	2. Division/Group HELLS CANYON FIRE
---------------------------------	-----------	---

3. Incident Name WEISER COMPLEX	4. Operational Period 09/07/13 Saturday Day Shift 0600 - 2030
---	---

5. Operations Personnel			
Operations Chief	R.ANDERSON	Division/Group Supervisor	
Operations Chief(Plans)	K.SMIHULA; M. BOOMER	Air Attack Supervisor	L DEFALCO; L ZAJANC
Branch Director		Safety Officer	J. NISHIKIDA; J. BROLLIER

6. Resources Assigned this Period					
Strike Team/Task Force/ Resource Designator	Leader	Num of Pers.	Trans. Y/N	Drop Off PT./Time	Pick Up PT./Time

7. Control Operations

UNSTAFFED - MONITOR BY AIR

8. Special Instructions

9. Division/Group Communications Summary							
Function	Frequency - RX	Frequency - TX	Tone	System	Channel	System	Channel
Command	163.0375	170.0250	RX/TX 107.2	King	7		
Tactical Div/Group	168.0500	168.0500	RX/TX 107.2	King	1		
Air to Ground	166.6750	166.6750		King	14		
Air to Ground							

Prepared by (Resource Unit Leader) WADE BURLESON (T)	Approved by (Planning Section Chief) SHAWN MCEVERS	Date Prepared 09/06/13	Time Prepared 0651
---	---	---------------------------	-----------------------

Division Assignment List	1. Branch	2. Division/Group RAFT-W
---------------------------------	-----------	------------------------------------

3. Incident Name WEISER COMPLEX	4. Operational Period 09/07/13 Saturday Day Shift 0600 - 2030
---	--

5. Operations Personnel

Operations Chief	R.ANDERSON	Division/Group Supervisor	CASEY JONES; TYLER HECHT (t)
Operations Chief(Plans)	K.SMIHULA; M. BOOMER	Air Attack Supervisor	LAWRENCE DEFALCO; LARRY L ZAJANC
Branch Director		Safety Officer	J. NISHIKIDA; J. BROLLIER

6. Resources Assigned this Period

Strike Team/Task Force/ Resource Designator	Leader	Num of Pers.	Trans. Y/N	Drop Off PT./Time	Pick Up PT./Time
TFLD 9/14	CLAY STEPHENS	1	N	WHISKEY SPIKE/0600	ICP 1930
TFLD (t) 9/15	ASHLEIGH DANTONIO (t)	1	N	WHISKEY SPIKE/0600	ICP 1930
TFLD	CAROLYN A WARDEN	1	N	WHISKEY SPIKE/0600	ICP 1930
TFLD 9/14	ROBERT MATHESON	1	N	WHISKEY SPIKE/0600	ICP 1930
TFLD (t) 9/15	MAUREEN MCPHEE (t)	1	N	WHISKEY SPIKE/0600	ICP 1930
FALC	PRICHER	1	N	WHISKEY SPIKE/0600	ICP 1930
BCMG 9/14	MICHAEL BLACK	1	N	WHISKEY SPIKE/0600	ICP 1930
BCMG 9/15	JANET LADD	1	N	WHISKEY SPIKE/0600	ICP 1930
AEMF	JEREMY OLSON	1	N	WHISKEY SPIKE/0600	ICP 1930
EMPF	ANNA MARTIN	1	N	WHISKEY SPIKE/0600	ICP 1930
EMPF	KEVIN MCMAHON	1	N	WHISKEY SPIKE/0600	ICP 1930

7. Control Operations

SECURE, MOPUP LINES AND MONITOR SWITCHBACKS.
CONTINUE TO REHAB AS PER RESOURCE ADVISOR DIRECTION.

8. Special Instructions

9. Division/Group Communications Summary

Function	Frequency - RX	Frequency - TX	Tone	System	Channel	System	Channel
Command	164.5750	170.3625	RX/TX 107.2	King	8		
Tactical Div/Group	166.7750	166.7750	RX/TX 107.2	King	5		
Logistics							
Air to Ground	170.0000	170.0000		King	15		

Prepared by (Resource Unit Leader) WADE BURLESON (T)	Approved by (Planning Section Chief) SHAWN MCEVERS	Date Prepared 09/06/13	Time Prepared 0654
---	---	---------------------------	-----------------------

Air Operations Summary

Prepared by
Bill Hayes

Date Prepared
09/06/13

Time Prepared
1935

1. Incident Name

WEISER COMPLEX

2. Operational Period

09/07/13 Saturday Day Shift 0600 - 2030

Sunrise

0717

Sunset

2012

3. REMARKS (Safety Notes, Hazards, Air Operations Special Equipment, etc.):

- High Voltage line near Brownie Reservoir
- High Voltage lines between Hells Canyon and Raft fires.
- MTR between helibase and the Incident (deconflicted)

4. MEDEVAC AIRCRAFT:

H-212 (Rappell)

5. TFR:

Raft TFR: 3/9122
Hells Canyon TFR: 3/9005

6. PERSONNEL	Phone #	7 FREQUENCY	AM RX/TX	FM RX/TX	8. FIXED-WING	# Avail/Type/Make-Model/FAA#/Base(s)
AOBD	Bill Hayes	Raft Air to Air	133.950			
ASGS	Eric Taplin	Raft RW	135.550			
HEB1	Jay Matsen	Hells Canyon Air to Air	124.550		Leadplanes Base FAX#:	
ATGS	Tony DeFalco	Hells Canyon RW	127.800			
		Raft A/G		170.0000	Air Attack	(A-5) 5DM/ King Air
HLB	Midvale Helibase	Hells Canyon A/G		166.6750		
		Deck		163.1000		
FAO	Matt Shaddle					

9. HELICOPTERS (Use additional Sheets As Necessary)

FAA N#	TY	MAKE/MODEL	BASE	AVAIL	START	REMARKS	FAA N#	TY	MAKE/MODEL	BASE	AVAIL	START	REMARKS
226GM	3	Bell 206L4	Midvale	0900	0930	H-6GM A-2							
351FW	3	AS-350-B2	Midvale	0900	0930	H-1FW A-8							
2773H	2	Bell 205A1	Midvale	0900	0930	H-73H A-43							
212KA	2	Bell 212	Midvale	0900	0930	H-212 A-21							
217AC	1	S-64E	Midvale	0900	0930	HT-737 A-13							
218AC	1	S-64E	Midvale	0900	0930	HT-741 A-6							

ICS 220

Final



INCIDENT Weather Forecast



FORECAST NO: 7
PREDICTION FOR: Day Shift
SHIFT DATE: Saturday 9/07/13
TIME AND DATE
FORECAST ISSUED: 2000 9/06/2013

NAME OF FIRE: Weiser Complex
UNIT: Payette National Forest
SIGNED: Joe Goudswaard
Incident Meteorologist

... Quiet weather to continue...

WEATHER DISCUSSION:

Upper level low pressure over northern Washington State this morning will continue to track almost due east through the weekend. This will place the incident in a dry west to southwest flow aloft with temperatures near normal for this time of the year. Some lingering moisture swinging around the upper low will brush the region on Sunday for a few more clouds and the slightest chance of an afternoon shower or thunderstorm. Once the low passes by, upper level ridging will build across the Pacific Northwest with a continuation of the dry conditions well into next week.

WEATHER FORECAST FOR TODAY:

WEATHER: Mostly sunny.
TEMPERATURES: 3500-5500 feet: 79 to 84 Over 5500 feet: 75 to 80
HUMIDITY: 18 to 26%
20 FT WINDS:
 RIDGETOP -: West/southwest 10 to 15 mph with gusts of 20 mph.
 SLOPE/VALLEY -: Light upslope/up valley becoming west/southwest 5 to 10 mph with gusts of 15 mph.
CWR: 0% **LAL:** 1 **HAINES INDEX:** 3
STABILITY/INVERSION: Weak inversion until 11 A.M...mixing height 6500 -7500 ft AGL

WEATHER FOR TONIGHT:

WEATHER: Mostly Clear.
TEMPERATURES: 3500-5500 feet: 47 to 52 Over 5500 feet: 41 to 47
HUMIDITY: 45 to 55%
20 FT WINDS:
 RIDGETOP -: Northwest around 10 mph.
 SLOPE/VALLEY -: Becoming light downslope by morning.
CWR: 0% **LAL:** 1 **HAINES INDEX:** 3

WEATHER FORECAST FOR SUNDAY:

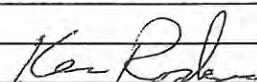
WEATHER: Partly cloudy with a 10% chance of showers and thunderstorms.
TEMPERATURES: 3500-5500 feet: 77 to 84 Over 5500 feet: 70 to 77
HUMIDITY: 20 to 29%
20 FT WINDS:
 RIDGETOP -: Northwest 8 to 14 mph.
 SLOPE/VALLEY -: Light upslope/up valley becoming northwest 6 to 10 mph.
CWR: 10% **LAL:** 2 **HAINES INDEX:** 3

EXTENDED FORECAST: Monday through Wednesday

Monday: Mostly sunny. Lows 42 to 53. Highs 71 to 82. Northwest winds 10 -20 mph
Tuesday: Mostly sunny. Lows 43 to 55. Highs 73 to 81. Northwest winds around 10 mph.
Wednesday: Mostly sunny. Lows 47 to 54. Highs 77 to 83. Northeast winds around 10 mph.

If you have any weather observation from this incident, please provide them to the IMET

FIRE BEHAVIOR FORECAST

FORECAST NUMBER: 7	TYPE OF FIRE: Wildland Fire
FIRE NAME: Weiser Complex	OPERATIONAL PERIOD: Day Shift, September 7, 2013
DATE ISSUED: September 6, 2013	TIME ISSUED: 2000
UNIT: Payette NF / Four Rivers BLM	SIGNED: /s/ Ken Rodgers FBAN 

INPUTS

WEATHER SUMMARY: Mostly sunny with slight chance of showers or thunderstorms
-See Attached Forecast-

OUTPUTS

FIRE BEHAVIOR

GENERAL:

Low burning activity is anticipated to occur on the fire today because of the rainfall received last Wednesday and Thursday. Smoldering and limited surface burning in timber stands/stringers can be expected in areas of the fire that were sheltered from rain, like under a thick tree canopy. Burning could increase intensity slightly from yesterday as sunshine and wind continue to dry out surface fuels. This burning could extend into the night especially in down logs and debris on the forest floor.

SPECIFIC:

Hells Canyon

This fire is cold and not anticipated to have any burn activity.

Raft

Divisions N, Q & Z: These divisions have cold fire edge and are not anticipated to have any burn activity.

Divisions S & W: Isolated hot spots are still possible in locations in Div. S with shrub and tree patches, such as, drainage bottoms in the upper Cottonwood Creek drainage. Burning in grass and brush fuels is possible as they are dried out by sunshine and wind and RH drops below 25%. Timbered fuels in the switchback area of Div. W is another location where burn activity will likely happen. Surface burning with occasional single tree torching and short range spotting is expected by the switchbacks.

Initial Attack Actions: Low burning activity and limited fire spread are anticipated with any new starts in the incident response area.

AIR OPERATIONS:

Visibility for air operations should be good in general. Turbulence can be expected with afternoon and/or thunderstorm winds over the fires and dip sites. Blowing dust, ash and dust devils are possible with afternoon winds when the fire areas have dried out from recent rainfall.

SAFETY

Remember Lookout Situation #14 – Weather Becoming Hotter and Drier

Maintain Situational Awareness

IRAWS talk! Rx/Tx 163.350, DTMF must be engaged. While transmitting, key in **0032** for Brownlee and **0035** for Dennett Creek (IRAWS may be removed and go off-line today)

Incident Radio Communications Plan	1. Incident Name WEISER COMPLEX	2. Operational Period 09/07/13 Saturday Day Shift 0600 - 2030
---	---	--

3. Basic Radio Channel Utilization						
Radio Type	Channel	Function	Frequency/Tone		Assignment	Remarks
King	1	TAC 1	RX 168.0500	TX 168.0500	DIV A & Q	
			RX/TX 107.2			
King	2	TAC 2	RX 168.2000	TX 168.2000	AVAILABLE AS NEEDED	
			RX/TX 107.2			
King	3	TAC 3	RX 168.6000	TX 168.6000	AVAILABLE AS NEEDED	
			RX/TX 107.2			
King	4	TAC 4	RX 166.7250	TX 166.7250	DIV S	
			RX/TX 107.2			
King	5	TAC 5	RX 166.7750	TX 166.7750	DIV W	
			RX/TX 107.2			
King	6	TAC 6	RX 168.2500	TX 168.2500	DIV Z & IA	
			RX/TX 107.2			
King	7	CMD 7	RX 163.0375	TX 170.0250	ALL DIV	CMD NET AT STURGIL
			RX/TX 107.2			
King	8	CMD 8	RX 164.5750	TX 170.3625	ALL DIV	CMD NET AT LOOKOUT
			RX/TX 107.2			
King	9	CMD 9	RX 166.6125	TX 168.4000	ALL DIV	CMD NET
			RX/TX 107.2			
King	11	STURGIL	RX 171.5500	TX 172.3500	LINK TO DISPATCH	EMERGENCY USE ONLY
			TX 123.0			
King	13	AIR AMBULANCE	RX 155.2800	TX 155.2800	AIR AMBULANCE	A/G EMS F2
			Tone 156.7			
King	14	A/G HELL'S	RX 166.6750	TX 166.6750	HELL'S CANYON A/G	
King	15	A/G RAFT	RX 170.0000	TX 170.0000	RAFT A/G	
King	16	AIR GUARD	RX 168.6250	TX 168.6250	EMERGENCY USE ONLY	
			TX 110.9			

4. Prepared by (Communications Unit) Bryan Granath COML	<i>Bryan L. Granath</i>	5. Date Prepared 09/06/13	6. Time Prepared 1125
--	-------------------------	------------------------------	--------------------------

HEALTH AND SAFETY MESSAGE

SAFETY starts with *YOU*

We are ALL accountable for SAFE behaviors

INCIDENT: WEISER Complex

DATE: 9-07-2013

Oper. Period: Day Operations

Major Hazards and Risks:

Driving

Steep terrain

Railroad Tracks

Fire Order of the Day – *Be Alert, Keep calm, Think clearly, and Act decisively*

Narrative:

Driving – Wet slick roads due to condition of the clay like material, school open and their speed limits are 20 mph, remaining roads in town are 25 mph, animals (bear, deer, cows and coyote) on the roads, and use of cell phones while driving are some potential dangerous situations encountered.

Steep Terrain – As your time at the incident is goes on, wear and tear on you and the fire ground can create a dangerous environment. Recognition and planning as well as not being in a hurry can decrease potential injury and increase odds of a safe trip home.

Railroad tracks – Most road crossings have gates with lights to assist in save crossing. Occasionally, railroad crossing are not marked. When crossing the tracks, we suggest that you slow down and stop, then look both ways twice before crossing. The biggest concern here is the active railroad crossing on old Hwy 70 and Pringle that does have a stop sign.

Watch Out Situation of the Day



Snag Safety

Hazard trees are one of the most common risk factors leading to injuries. Surveying your work area for potential hazard trees should include:

- Environment
 - Weather
 - Steep slopes
 - Diseased or bug killed areas
 - Number and height of trees
 - Potential for trees to domino
- Indicators
 - Burning trees
 - High risk species (old growth Doug Fur and rot and heart rot Fur trees)
 - Numerous down trees
 - Dead, broken or burning tops
 - Absence of needles, bark or limbs
 - Leaning or hung up trees

Operational Period Day Shift - 9-02-2013	Weiser Complex 215a			Date 9/5/2013
Hazards	Pre Mitigation	DIV	Mitigation(s), Warnings and Remedies	Post Mitigation
Driving	Extr High	S, W	Slow down - School in session, Narrow roads Practice "Defensive Driving" to and from fire Use spotters when backing and honk horn, use headlights 3 second rule for spacing, use chocks	High
Heat Related Injuries Dehydration	Hi	S, W	Drink fluids throughout operational period Carry extra water to line and cache water at drop points Take frequent breaks, ex. 10 min for each hr Recognize Heat related symptoms: loss of energy, dizziness, no hunger, hot skin, lack of sweating	Med
Steep Terrain	Extr High	S, W	Use safe lining building techniques and spacing Evaluate necessity of personnel for work	HI
Extreme Fire Behavior Raft	Extremely Hi	S	LCES, Understand and share weather observations Review "Thunder Storm Safety" guidelines IRPG Establish "Trigger Points" for withdrawal Use "Risk Management" process prior to (refer to IRPG, p 1)	Hi
Animals (Bees, Wasps)	Extr High	S, W	If allergic to bee stings, carry EpiPen Notify others and flag hives	Extr Hi
Line Construction Mop up, Reha., Patrol, Secure Line	Extr Hi	S, W	Ensure LCES in place prior to engagement (IRPG page 6) Use Downhill Line Construction (IRPG p8) Utilize Risk Management Process (IRPG, p 1)	Hi
Chain Saw Ops	Extr Hi	S, W	Follow "Hazard Tree Guidelines" (IRPG p 20/21) Look Up, Down and Around for hazard trees Only fell and buck trees within your expertise/training Follow "Procedural Felling Ops" (IRPG p 89) Do not fall trees during high wind events	Extr Hi
Public Interaction	Med	ALL	Be alert to non-fire personnel (hunters, vacationers, ranch) Don't park/block driveways or private roads Report problems in closed areas, don't engage	Lo
Communications	Extr Hi	S	Ensure communications with your supervisor/others Clone radios to ensure have correct frequencies Report any communication problems (bleed over, s dead spots, other issue	Med
Air Ops	Extr High	W	Follow "Aviation Watch Out Situations (IRPG p 52) Don't plan on air resources for medical transports Direct bucket drops (IRPG 65) Ensure proper communication with air resources	Extr High
Animals (Bears, Snakes)		S, W	Be vigilant for rattlesnakes, Leave them alone Keep hands and feet out of areas you cannot see Notify others of the presence of snakes	
Dozer Ops	Hi	W	Minimize time below dozer Only approach when in eye contact	Med
Toxic Plants	Med	S, W	Recognize Poison Ivy When cutting Sumac, protect airway	Med
ATV/UTV Ops	Hi	S, W	Wear proper PPE per USFS protocols) Drive in control, keep speeds down	Med

Medical Plan	1. Incident Name WEISER COMPLEX	2. Operational Period 09/07/13 Saturday Day Shift 0600 - 2030
---------------------	---	--

3. Incident Medical Aid Station			
Medical Aid Stations	Location	Paramedics	
		Yes	No
Weiser Complex ICP 877-706-9718	1205 Pringle Rd Weiser, ID N 44* 17.885 W 117* 02.037	<input checked="" type="checkbox"/>	<input type="checkbox"/>
DIV S Benton Spike	N 44* 39.002 W 116* 57.566	<input checked="" type="checkbox"/>	<input type="checkbox"/>
DIV W Whiskey Spike	N 44* 34.078 W 117* 01.268	<input checked="" type="checkbox"/>	<input type="checkbox"/>
		<input type="checkbox"/>	<input type="checkbox"/>
		<input type="checkbox"/>	<input type="checkbox"/>

4. Transportation

A. Ambulance Services				
Name	Address	Phone	Paramedics	
			Yes	No
* Washington Co. EMS Weiser Ambulance	451 Park St. Weiser, ID 83672	208-414-4257	<input checked="" type="checkbox"/>	<input type="checkbox"/>
* Air St. Luke's	190 E Bannock Street Boise Idaho 83712	208-381-8790	<input checked="" type="checkbox"/>	<input type="checkbox"/>
			<input type="checkbox"/>	<input type="checkbox"/>
	<i>*EMS Air-Grd is called EMS F2 Rx/Tx 155.280 Tx Tone 156.7</i>		<input type="checkbox"/>	<input type="checkbox"/>
	<i>*Communications will order through Payette IA Dispatch</i>		<input type="checkbox"/>	<input type="checkbox"/>

B. Incident Ambulances

Name	Location	Paramedics	
		Yes	No
H-212 (2KA) Price Valley Helitack	Midvale Helibase <i>(EHE Capable, Communications will order through Payette IA Dispatch)</i>	<input type="checkbox"/>	<input checked="" type="checkbox"/>
		<input type="checkbox"/>	<input type="checkbox"/>
EMPF Stowe (CCFD Suburban)	ICP	<input checked="" type="checkbox"/>	<input type="checkbox"/>
		<input type="checkbox"/>	<input type="checkbox"/>

5. Hospitals

Name	Address/Latitude/Longitude	Travel Time		Phone/Frequency	Helipad		Burn Center	
		Air	Ground		Yes	No	Yes	No
Weiser Memorial Hospital	645 E. 5th St. Weiser, ID 83672 ER 208-549-4480 N44° 14.991 W 116° 58.541 Fax 208-414-3058	10 Min	45 Min	Grd: 155.340 A-G: 155.280 156.7	<input checked="" type="checkbox"/>	<input type="checkbox"/>	<input type="checkbox"/>	<input checked="" type="checkbox"/>
St. Alphonsos Ontario	351 S. W. 9th St. Ontario, OR. 97914 541-881-7100 N 44° 02.557 W 116° 57.957	20 Min	1.2 Hr	Rx/Tx 155.4000 Tone 107.2	<input checked="" type="checkbox"/>	<input type="checkbox"/>	<input type="checkbox"/>	<input checked="" type="checkbox"/>
University of Utah Burn Center (Level 1 Trauma)	50 N. Medical Dr. Salt Lake City, UT 801-581-2700 N40° 46.567 W 111° 50.400	2 Hr	6 Hr	Contact Salt Lake Tower for Freq.	<input checked="" type="checkbox"/>	<input type="checkbox"/>	<input checked="" type="checkbox"/>	<input type="checkbox"/>
St Alphonsus Regional Hospital (Level 2 Trauma)	1055 N. Curtis Road Boise, ID 83706 208-367-2121 N 43° 36.800 W 116° 15.200	30 Min	1 Hr	Contact Boise Tower for Freq.	<input checked="" type="checkbox"/>	<input type="checkbox"/>	<input type="checkbox"/>	<input checked="" type="checkbox"/>
St. Lukes Regional Medical Center	190 E. Bannock Street Boise, ID 83712 208-381-2222 N 43° 36.760 W 116° 11.644	30 Min	1 Hr	Contact Boise Tower for Freq.	<input checked="" type="checkbox"/>	<input type="checkbox"/>	<input type="checkbox"/>	<input checked="" type="checkbox"/>

6. Medical Emergency Procedures

FOR ALL MEDICAL EMERGENCIES: IDENTIFY POINT OF CONTACT (POC), POSITION AND ANNOUNCE "MEDICAL EMERGENCY" TO INITIATE RESPONSE FROM IMT COMMUNICATIONS/DISPATCH

See attached ICS 206A **EMS Air-Ground is called EMS F2 Rx/Tx 155.280 Tx Tone 156.7**

7. Prepared by (Medical Unit Leader) Chris Graves	8. Reviewed by (Safety Officer) Joe Nishikida / Justin Brollier / Chad Fisher (t)	9. Date Prepared 09/06/13	10. Time Prepared 1125
--	--	------------------------------	---------------------------

ICS 206 A

Life Threatening Medical Emergency Communication Procedures

Medical Life Threatening Procedures

In the event of a medical emergency the On-Scene Point of Contact (POC) will provide the following information to Communications

1. Declare the nature of the emergency.
 - a. Medical injury/illness? Is it life threatening?
2. If Life threatening, request that the designated frequency be cleared for emergency traffic
3. Identify the On-Scene Point of Contact (POC) by resource and last name (i.e. POC is TFLD Smith)
4. Identify nature of incident, number injured, patient assessment(s) and location (geographic and GPS coordinates)
5. Identify on-scene medical personnel by position and name (i.e. EMT Jones)
6. Identify preferred method of patient transport
7. Request any additional resources and/or equipment needed
8. Document all information received and transmitted on the radio or phone
9. Identify any changes in the On-Scene POC or medical personnel as they occur

The identified Med-Evac helicopter for the Weiser Complex is H-212(2KA) located at Midvale.

Note: For life flight helicopter evacuations contact and work directly with the Initial Attack Payette Dispatch organization. The Payette Forest has in place a pre-arranged system of mobilizing and coordinating contact with the hospital/ambulance service (or Life Flight/Guardian—as situation applies), comp/claims personnel, flight-following, and airspace control at the airport and helibase(s). Outside calls to any of the above confuse the system and may slow the overall process.

Division Branch Group	Area / Location / Capability
Raft N	EMS Responders & Capability: Unstaffed Equipment Available on Scene: Medical Emergency Channel: Command Ch. 13 EMS F2 Air to Ground Rx/Tx 155.280 Tx Tone 156.7 ETA for Ambulance to Scene: Air: 1 hour Ground: 3 hours Approved Helispot: H-2 Lat: Long:
Raft Q	EMS Responders & Capability: Unstaffed Equipment Available on Scene: ALS Medical Emergency Channel: Command Ch. 13 EMS F2 Air to Ground Rx/Tx 155.280 Tx Tone 156.7 ETA for Ambulance to Scene: Air: 1 hour Ground: 3 hours Approved Helispot: Lat: Long:
Raft S	EMS Responders & Capability: Ryan Gregor EMPF / Gary Ford EMPF / Todd Miranda EMPF Equipment Available on Scene: ALS Medical Emergency Channel: Command Ch. 13 EMS F2 Air to Ground Rx/Tx 155.280 Tx Tone 156.7 ETA for Ambulance to Scene: Air: 1 hour Ground: 3 hours Approved Helispot: DP 20 Lat: Long:

ICP	Point of Contact: MEDL Chris Graves / Austin Stowe EMPF / Jonathon Grimes EMPF EMS Responders & Capability: ALS Equipment Available on Scene: CCFD Suburban will be utilized for incident ambulance Medical Emergency Channel: Command Ch. 13 EMS F2 Air to Ground Rx/Tx 155.280 Tx Tone 156.7 ETA for Ambulance to Scene: EMS Ground to Hosp. 155.340 Air: 20 minutes Ground: 20 minutes Approved Helispot: Lat: Long:	
Midvale HB	Point of Contact: Price Valley Helitack EMS Responders & Capability: BLS Equipment Available on Scene: EHE, Trauma kit, C-spine Medical Emergency Channel: Command Ch. 13 EMS Air to Ground 155.280 ETA for Ambulance to Scene: Air: 1 hour Ground: 3 hours Approved Helispot: Midvale HB Lat: Long:	
Prepared By Chris Graves, MEDL Date: 9/3/2013		Reviewed By (Safety Officer) Joe Nishikida / Justin Brollier / Chad Fisher (t) Date: 9/3/2013

Location Name	Longitude	Latitude
H-1	-117 5.725'	44 29.392'
H-3	-117 6.608'	44 29.360'
H-2 Spike	-117 8.348'	44 34.001'
DP-1	-117 9.636'	44 29.126'
DP-2	-117 8.007'	44 33.804'
DP-10 Spike	-117 3.536'	44 40.732'
DP-20	-116 58.742'	44 38.812'
DP-30	-116 59.564'	44 36.118'
DP-55 Spike	-117 1.268'	44 34.078'
DP-40 Whiskey Spike	-117 1.259'	44 35.089'
Benton Spike	-116 57.566'	44 39.002'

Medical – 9 Line Information

Line 1	Information Level of severity	Notes Triage, page 48, IRPG
<input type="checkbox"/>	Red - (Airway obstruction, Difficulty Breathing, Major blood loss Cardiac Chest Pain, Penetrating object, Open fracture, 2# or 3# burn more than 4 palms	Code 3 ALS ambulance or Medivac Helicopter Medical radio traffic has priority Emergency radio traffic restricted to: On Site Medical, Division Supervisor, or On Scene IC
<input type="checkbox"/>	YELLOW – (Closed Fracture, Significant trauma, Laceration and bleeding not controlled by pressure, Not able to walk, 2# or 3# burn, no more than 1-2 palm size	Ambulance or consider air Transport if at a remote location Medical radio traffic may have priority as above
<input type="checkbox"/>	GREEN – (Small area abrasions or lacerations, bleeding controlled by pressure, Minor sprain, general sickness	Ground transport via crew Ground transport by field medic or Consider air if at remote location
2	Patient Assessment Injuries & Treatment Patient #1 _____ _____ _____ Patient # 2 _____ _____ _____	Assessment Page 42, IRPG, Treatment page 41, 43-47 <ul style="list-style-type: none"> • Level of consciousness • Breathing rate • Pulse rate and quality • Skin condition (color, temperature, moisture) Injury Bleeding Heat Fracture Burns Head injury Bee stings Eye injury
3	Patient Location	Drop Point, Staging area, Spike Camp, Line area or GPS
	Lat: _____ Long _____	Set GPS to WGS 84 Use Degrees, Minutes, tenth of Minutes
4	Special Equipment Needs	Hoist, SKED, Backboard, Litter, Rope Rescue, Trauma bag, Oxygen, IV Fluids
5	On scene Medic _____ IC _____	Crew Medic, Field Medic Who is the IC on this incident?
6	Air Guard– TX 168.625 / RX 168.625 Command _____ Tactical _____	What Frequency or channel will the incident be run on?
7	LZ Location by GPS Lat: _____ Long _____ Ground Contact _____	LZ Area Location Pages 57, IRPG Use Degrees, Minutes, tenth of Minutes
8	LZ Special Hazards	Trees, Power poles, Wind Direction, slope
9	Patient Affiliation	Agency, Contractor, Military

Training Message

September 7, 2013

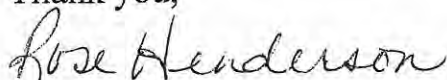
Weiser Complex

Due to team demobilization, the training unit will be finished by 1000 Sunday morning. The following people need to please stop by the training desk BEFORE completing their demob *or* going out to the line:

Robert Bailey
Mike Boomer
Ashleigh Dantonio
Chad Fisher
Robert Gratton
Tyler Hecht
Skeet Houston
Charles Jacobs
Michael Kolb
Maureen McPhee
Jerrilynn Morrill
Sheydon Murdock
Eric Nolan
Scott Rasmussen
Larry Rios
Kathy Saco
Miranda Stone
Thayne Wahtomy
Geneva Woods

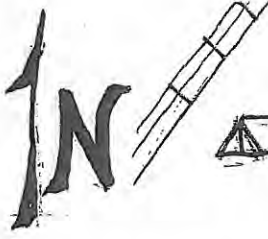
The close out session will not take long at all. Please remember to bring your task book with you to the close out (making sure that the trainer has already added their initials and completed the evaluation page). If at all possible, it is desired that the trainer also attend the close-out as personnel evaluations need to be completed (or, bring a completed one that was in the IAP dated September 4, 2013). This is necessary to ensure your Type 2 training assignment on this incident is properly documented and records are sent to your home unit.

Thank you,



Rose Henderson
Training Specialist

	A	B	C	D
1	Wieser Complex Phone List			
2				
3	SOF2 Team			
4	Justin Brollier		208-863-5404	
5	Joe Nishkida		775-848-9163	
6	Chad Fisher		208-830-4823	
7				
8				
9	Medical		877-706-9718	
10	Chris Graves/unit leader		755-233-6613	
11	Kathy Saco (t)		208-303-0242	
12				
13	Communitations		877-721-9297	
14	Logistics		877-712-1547	
15	Finance		877-707-4600	
16	Finance Fax		208-549-2004	
17	Cost		877-693-3315	
18				
19	Demob		208-549-2034	
20	Planning		877-707-2487	
21	Public Info		877-701-8201	
22	Internal		877-700-1438	
23				
24	Ops		877-690-3864	
25	Safety		877-690-3864	
26	Situations		877-691-5219	
27	IC/Meeting Tent		877-726-7218	



CAMPING

PARKING

NO CAMPING

SMOKING AREA

MEETINGS

COMM

COST

FINANCE

SITUATION

SAFETY

FACILITIES

MEDICAL

LOGISTICS

TIME CHECKIN

DEMOB

INFO

CAMPING

SHOWERS

PARKING

SMOKING AREA

IA PARKING

NO CAMPING

CATERING

DUMPSTERS

LUNCHES ICE/WATER

CAMPING

SECURITY

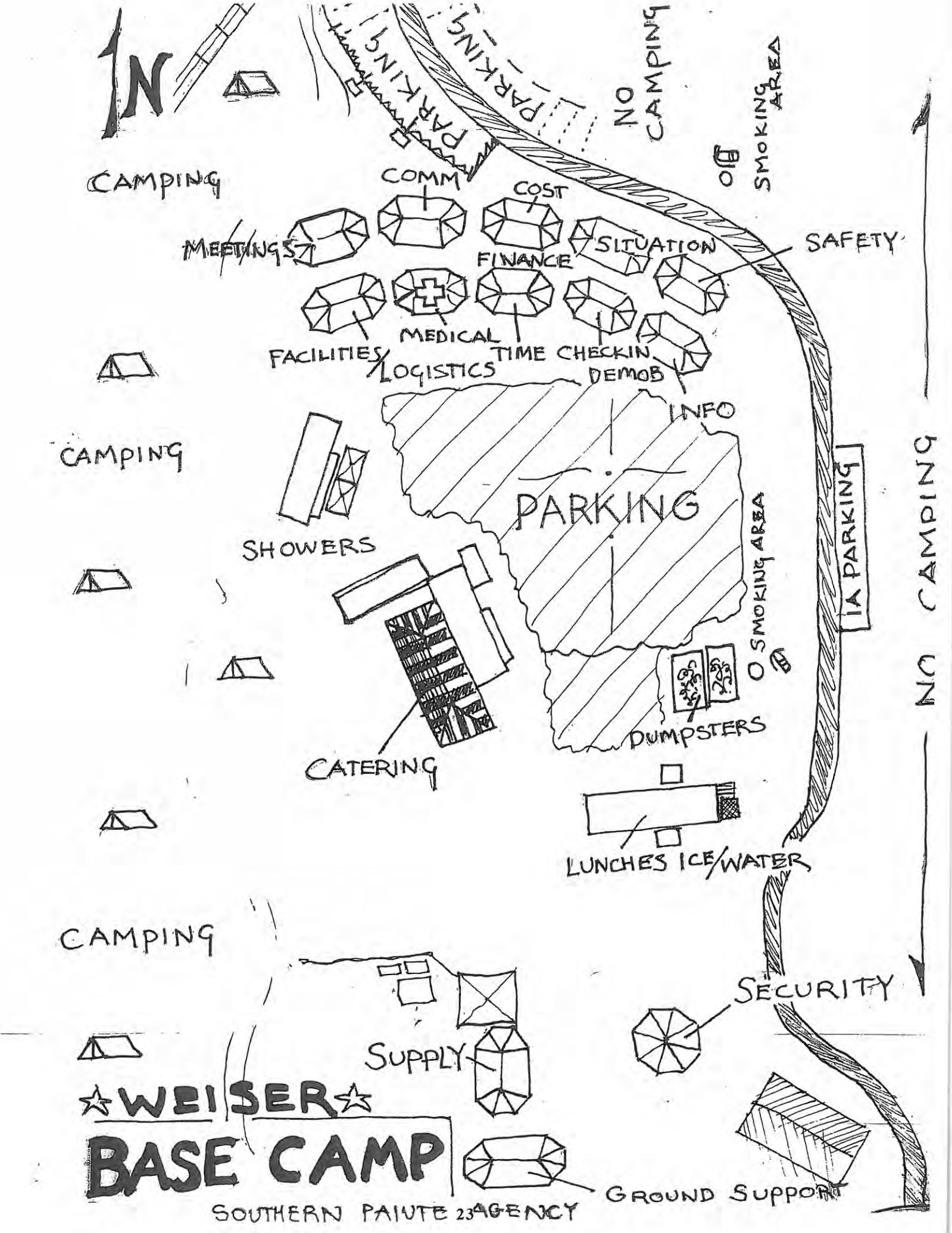
SUPPLY

★ WEISER ★

BASE CAMP

GROUND SUPPORT

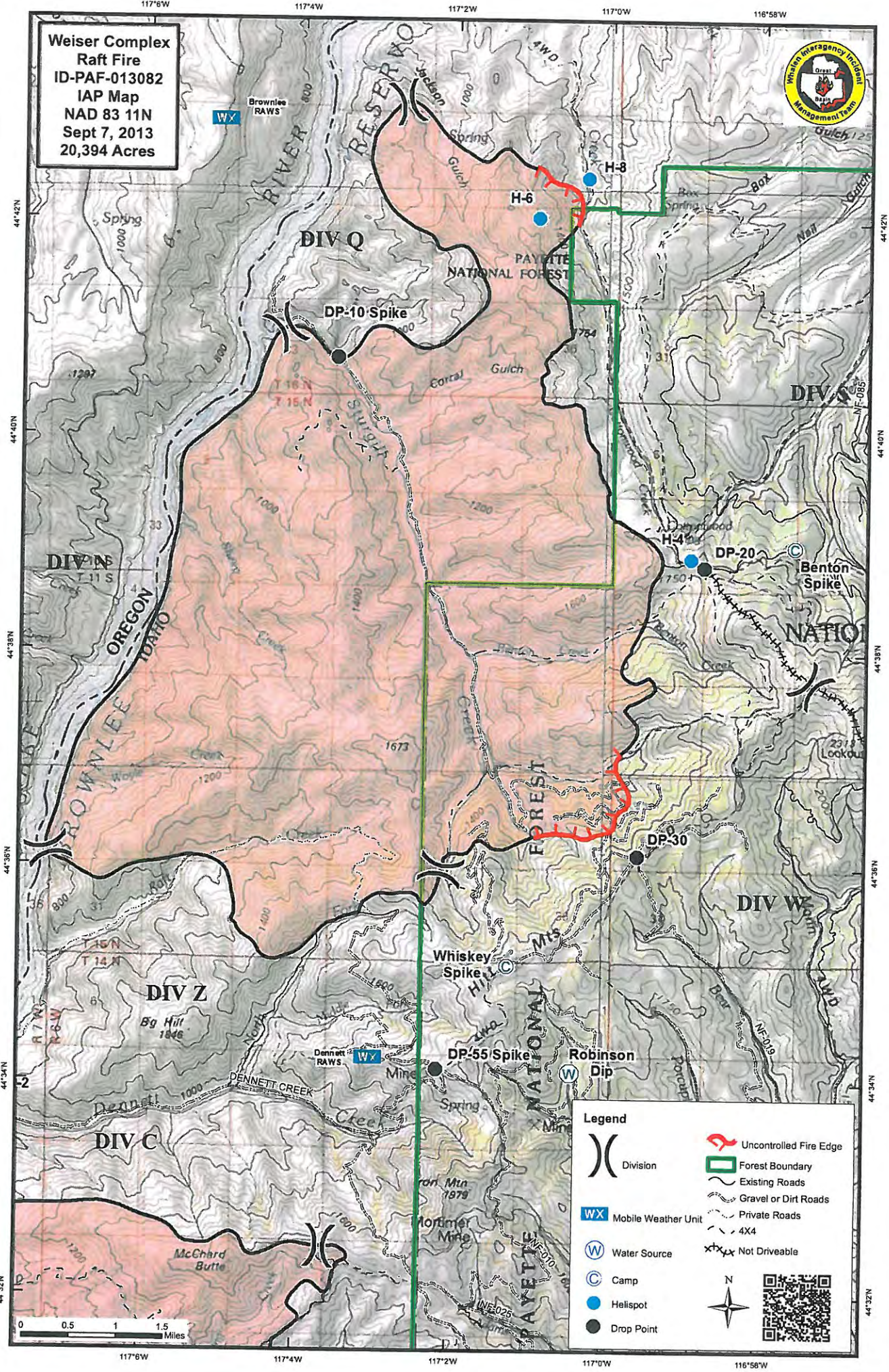
SOUTHERN PAIUTE AGENCY



TIME

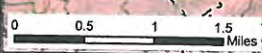
MAJOR EVENTS

**Weiser Complex
Raft Fire
ID-PAF-013082
IAP Map
NAD 83 11N
Sept 7, 2013
20,394 Acres**



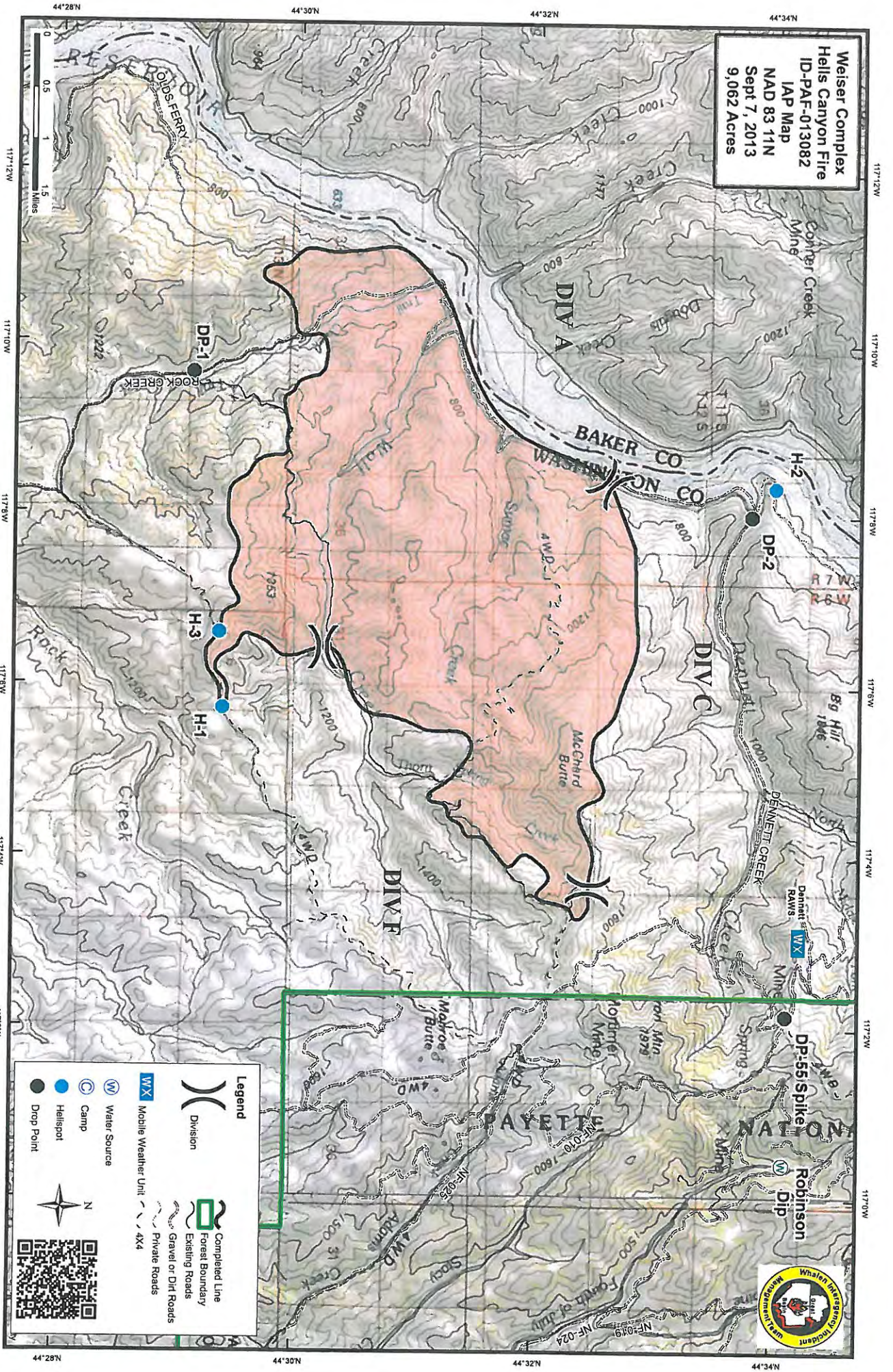
Legend

- Division
- Forest Boundary
- Existing Roads
- Gravel or Dirt Roads
- Private Roads
- Not Drivable
- Mobile Weather Unit
- Water Source
- Camp
- Helispot
- Drop Point
- Uncontrolled Fire Edge



Map coordinates: 117°6'W, 117°4'W, 117°2'W, 117°0'W, 116°58'W; 44°42'N, 44°40'N, 44°38'N, 44°36'N, 44°34'N, 44°32'N

Weiser Complex
Hells Canyon Fire
 ID-PAF-013082
 IAP Map
 NAD 83 11N
 Sept 7, 2013
 9,062 Acres



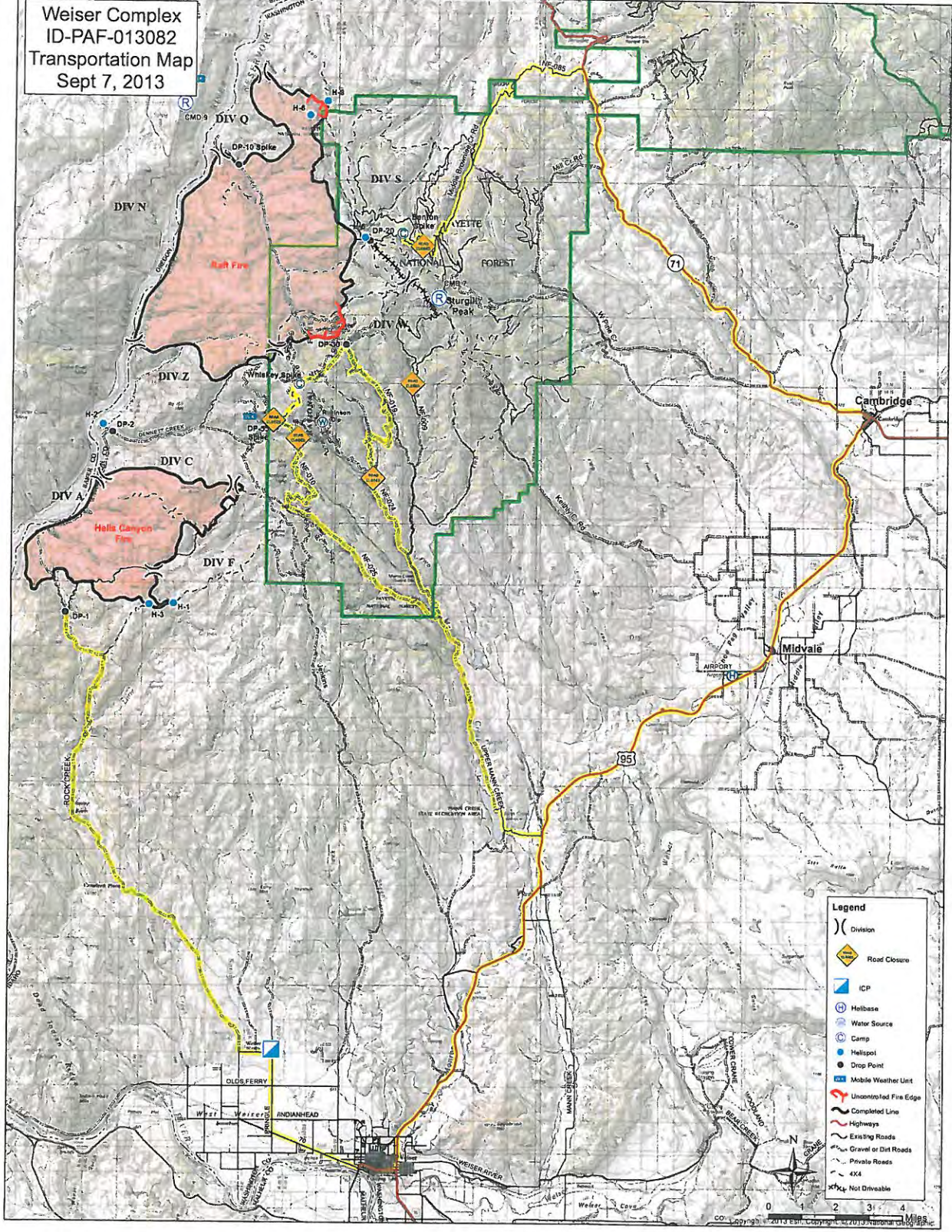
Legend

- Division
- Completed Line Forest Boundary
- Existing Roads
- Gravel or Dirt Roads
- Private Roads
- Water Source
- Camp
- Helispot
- Drop Point
- Mobile Weather Unit



44°28'N 44°30'N 44°32'N 44°34'N
 117°12'W 117°10'W 117°8'W 117°6'W 117°4'W 117°2'W 117°0'W

Weiser Complex
ID-PAF-013082
Transportation Map
Sept 7, 2013



Legend

- () Division
- ◆ Road Closure
- ▢ ICP
- ⊕ Helibase
- ⊙ Water Source
- ⊙ Camp
- ⊙ Helispot
- ⊙ Drop Point
- ⊙ Mobile Weather Unit
- Uncontrolled Fire Edge
- Completed Line
- Highways
- Existing Roads
- Gravel or Dirt Roads
- Private Roads
- 4X4
- ⊗ Not Drivable



0 2 3 4 Miles