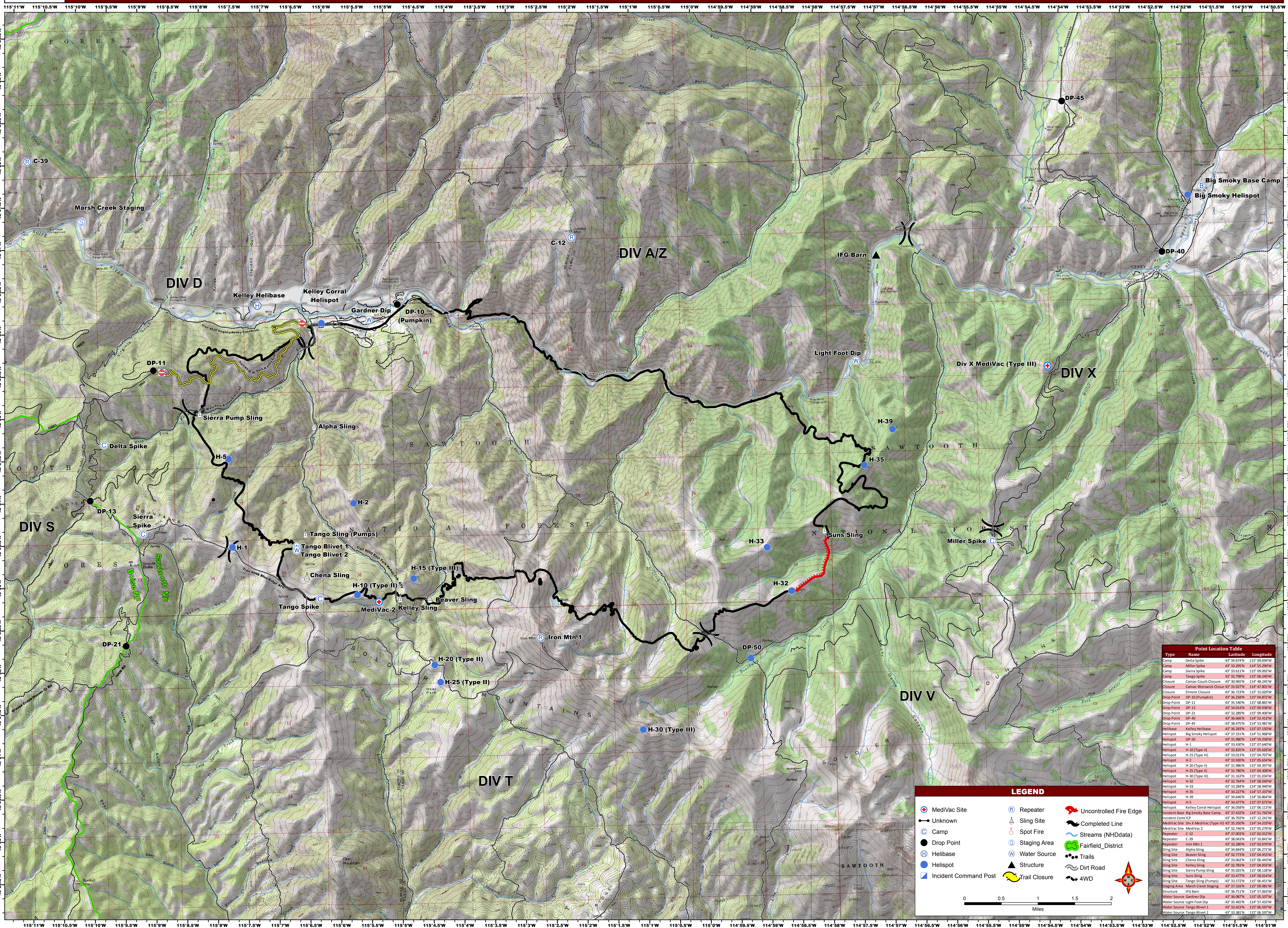




Kelley Fire ID-STF-000423 (P4HXM6)

Briefing Map

(Hand Digitized Intel + IR Flight 9/6/13 @ 2250 Hrs) **17,346 Acres**
September 8, 2013 @1745hrs



Type	Name	Latitude	Longitude
Camp	Delta Spike	43° 34.674'N	115° 09.694'W
Camp	Miller Spike	43° 33.295'N	114° 55.200'W
Camp	Sierra Spike	43° 31.611'N	115° 09.002'W
Camp	Tango Spike	43° 32.798'N	115° 06.240'W
Closure	Camas-Couch Closure	43° 30.965'N	114° 48.245'W
Closure	Camas-Worwick Closure	43° 31.937'N	114° 47.500'W
Closure	Elmore Closure	43° 36.723'N	115° 15.029'W
Drop Point	DP-10 (Pumpkin)	43° 36.258'N	115° 04.872'W
Drop Point	DP-11	43° 35.540'N	115° 08.862'W
Drop Point	DP-13	43° 34.014'N	115° 09.938'W
Drop Point	DP-21	43° 32.289'N	115° 09.406'W
Drop Point	DP-40	43° 36.666'N	114° 52.432'W
Drop Point	DP-45	43° 36.475'N	114° 53.981'W
Helibase	Kelley Helibase	43° 36.283'N	115° 07.350'W
Helibase	Big Smoky Helibase	43° 37.311'N	114° 51.948'W
Helispot	H-1	43° 33.430'N	115° 07.640'W
Helispot	H-2 (Type II)	43° 32.885'N	115° 06.630'W
Helispot	H-5 (Type III)	43° 31.011'N	115° 08.970'W
Helispot	H-10 (Type II)	43° 33.920'N	115° 06.654'W
Helispot	H-15 (Type II)	43° 31.966'N	115° 04.397'W
Helispot	H-20 (Type II)	43° 31.768'N	115° 04.283'W
Helispot	H-25 (Type II)	43° 31.163'N	115° 01.047'W
Helispot	H-30 (Type III)	43° 32.764'N	114° 58.569'W
Helispot	H-32	43° 31.264'N	114° 58.949'W
Helispot	H-33	43° 32.227'N	114° 57.370'W
Helispot	H-35	43° 34.646'N	114° 56.864'W
Helispot	H-39	43° 34.477'N	115° 07.673'W
Helispot	Kelley Corral Helispot	43° 36.658'N	115° 06.212'W
Incident Base	Big Smoky Base Camp	43° 37.432'N	114° 51.742'W
Incident Command CP		43° 36.703'N	115° 12.241'W
MediVac Site	Delta X MediVac (Type III)	43° 36.308'N	114° 54.579'W
MediVac Site	MediVac 2	43° 32.746'N	115° 05.799'W
Repeater	C-12	43° 37.003'N	115° 02.012'W
Repeater	C-39	43° 36.047'N	115° 10.841'W
Repeater	Iron Mtn 1	43° 36.286'N	115° 07.981'W
Sling Site	Alpha Sling	43° 34.844'N	115° 06.271'W
Sling Site	Beaver Sling	43° 32.777'N	115° 06.453'W
Sling Site	Chena Sling	43° 31.162'N	115° 04.413'W
Sling Site	Kelley Sling	43° 32.783'N	115° 04.933'W
Sling Site	Sierra Pump Sling	43° 35.025'N	115° 08.128'W
Sling Site	Suns Sling	43° 34.477'N	114° 58.414'W
Sling Site	Tango Sling (Pumps)	43° 33.572'N	115° 06.451'W
Staging Area	Marsh Creek Staging	43° 37.316'N	115° 09.981'W
Structure	IFG Barn	43° 36.711'N	114° 57.063'W
Water Source	Gardner Dip	43° 36.487'N	115° 06.378'W
Water Source	Light Foot Dip	43° 35.465'N	114° 57.433'W
Water Source	Tango Blivet 1	43° 33.422'N	115° 06.597'W
Water Source	Tango Blivet 2	43° 33.382'N	115° 06.907'W

LEGEND

- MediVac Site
- Unknown
- Camp
- Drop Point
- Helibase
- Helispot
- Incident Command Post
- Repeater
- Sling Site
- Spot Fire
- Staging Area
- Water Source
- Structure
- Trail Closure
- Uncontrolled Fire Edge
- Completed Line
- Streams (NHDdata)
- Fairfield_District
- Trails
- Dirt Road
- 4WD

0 0.5 1 1.5 2 Miles