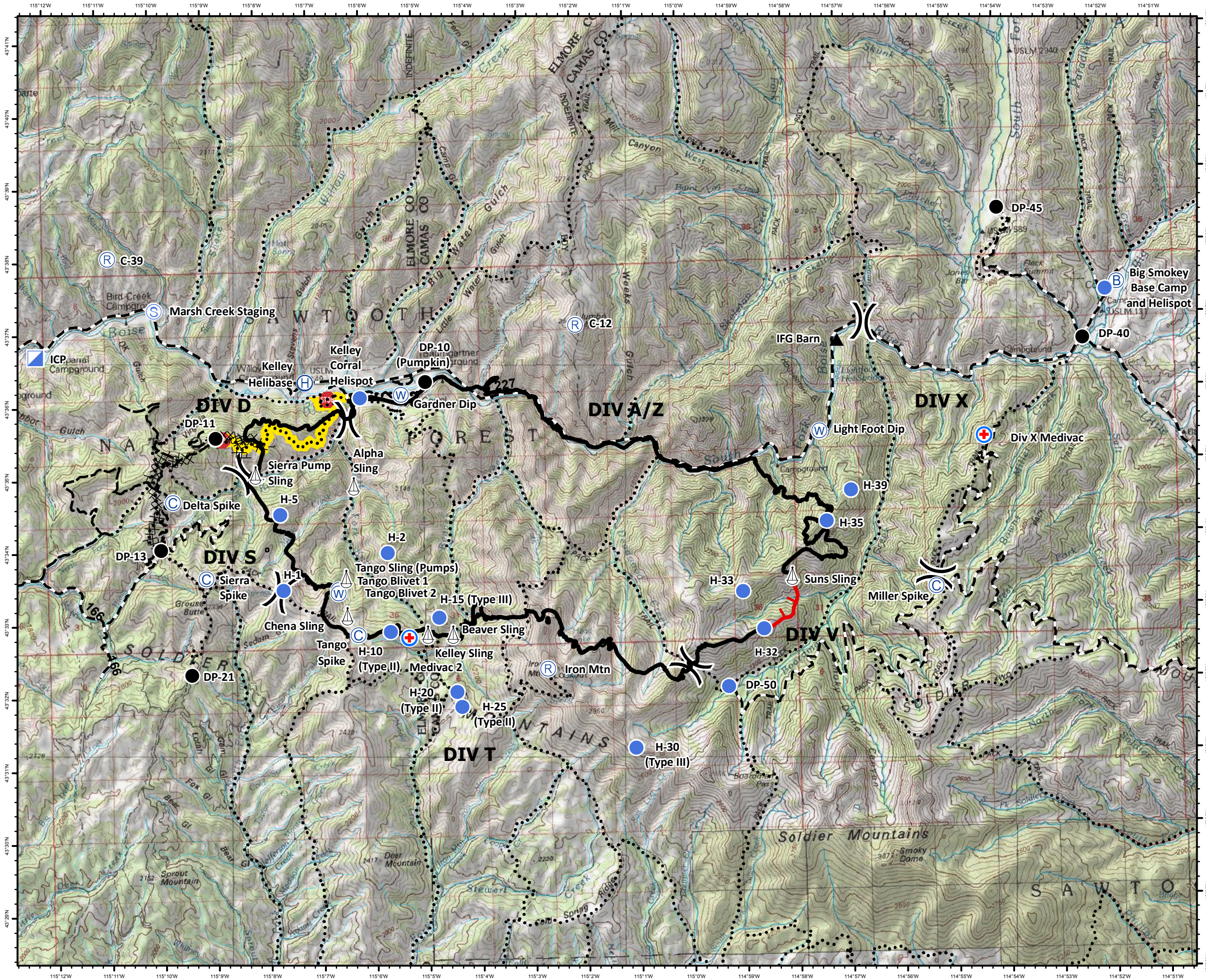


# Kelley Fire

17,346 Acres  
IR and Hand Digitized  
ID-STF-000423  
September 9, 2013



Type	Name	Latitude	Longitude
Camp	Delta Spike	43° 34.674'N	115° 9.694'W
Camp	Miller Spike	43° 33.295'N	114° 55.29'W
Camp	Sierra Spike	43° 33.611'N	115° 9.092'W
Camp	Tango Spike	43° 32.798'N	115° 6.24'W
Drop Point	DP-10 (Pumpkin)	43° 36.258'N	114° 4.872'W
Drop Point	DP-11	43° 35.54'N	115° 8.865'W
Drop Point	DP-13	43° 34.014'N	115° 9.938'W
Drop Point	DP-21	43° 32.289'N	115° 9.406'W
Drop Point	DP-40	43° 36.666'N	114° 52.412'W
Drop Point	DP-45	43° 38.475'N	114° 53.981'W
Helibase	Kelley Helibase	43° 36.283'N	115° 7.15'W
Helispot	Big Smokey Helispot	43° 37.331'N	114° 51.968'W
Helispot	DP-50	43° 31.98'N	114° 59.258'W
Helispot	H-1	43° 33.43'N	115° 7.64'W
Helispot	H-10 (Type II)	43° 32.835'N	115° 5.626'W
Helispot	H-15 (Type III)	43° 33.013'N	115° 4.707'W
Helispot	H-2	43° 33.92'N	115° 5.654'W
Helispot	H-20 (Type II)	43° 31.986'N	115° 4.397'W
Helispot	H-25 (Type II)	43° 31.78'N	115° 4.308'W
Helispot	H-30 (Type III)	43° 31.163'N	115° 1.034'W
Helispot	H-32	43° 32.764'N	114° 58.569'W
Helispot	H-33	43° 33.284'N	114° 58.949'W
Helispot	H-35	43° 34.227'N	114° 57.337'W
Helispot	H-39	43° 34.646'N	114° 56.864'W
Helispot	H-5	43° 34.477'N	115° 7.673'W
Helispot	Kelley Corral Helispot	43° 36.058'N	115° 6.113'W
Incident Base	Big Smokey Base Camp	43° 37.432'N	114° 51.742'W
Incident Comm	ICP	43° 36.703'N	115° 12.241'W
MediVac Site	Div X MediVac (Type III)	43° 35.35'N	114° 54.319'W
MediVac Site	MediVac 2	43° 32.746'N	115° 5.279'W
Miscellaneous	Alpha Sling	43° 34.844'N	115° 6.271'W
Miscellaneous	Beaver Sling	43° 32.773'N	115° 4.453'W
Miscellaneous	Chena Sling	43° 33.062'N	115° 6.443'W
Miscellaneous	Kelley Sling	43° 32.783'N	115° 4.933'W
Miscellaneous	Sierra Pump Sling	43° 35.025'N	115° 8.128'W
Miscellaneous	Suns Sling	43° 33.477'N	114° 58.014'W
Miscellaneous	Tango Sling (Pumps)	43° 33.572'N	115° 6.451'W
Other	IFG Barn	43° 36.711'N	114° 57.063'W
Repeater	C-12	43° 37.003'N	115° 2.012'W
Repeater	C-39	43° 38.043'N	115° 10.841'W
Repeater	Iron Mtn 1	43° 32.28'N	115° 2.67'W
Staging Area	Marsh Creek Staging	43° 37.316'N	115° 9.981'W
Unknown	Camas-Couch Closure	43° 30.965'N	114° 48.245'W
Unknown	Camas-Worswick Closur	43° 33.927'N	114° 47.801'W
Unknown	Elmore Closure	43° 36.723'N	115° 15.029'W
Water Source	Gardner Dip	43° 36.087'N	115° 5.337'W
Water Source	Light Foot Dip	43° 35.465'N	114° 57.433'W
Water Source	Tango Blivet 1	43° 33.423'N	115° 6.597'W
Water Source	Tango Blivet 2	43° 33.381'N	115° 6.597'W



- Closed Trail
- Uncontrolled Fire Edge
- Completed Dozer Line
- Completed Line
- Camp
- Drop Point
- Helibase
- Helispot

- Incident Base
- ICP
- MediVac Site
- Repeater
- Sling Site
- Staging Area
- Water Source
- Other

0 0.5 1 1.5 2 Miles