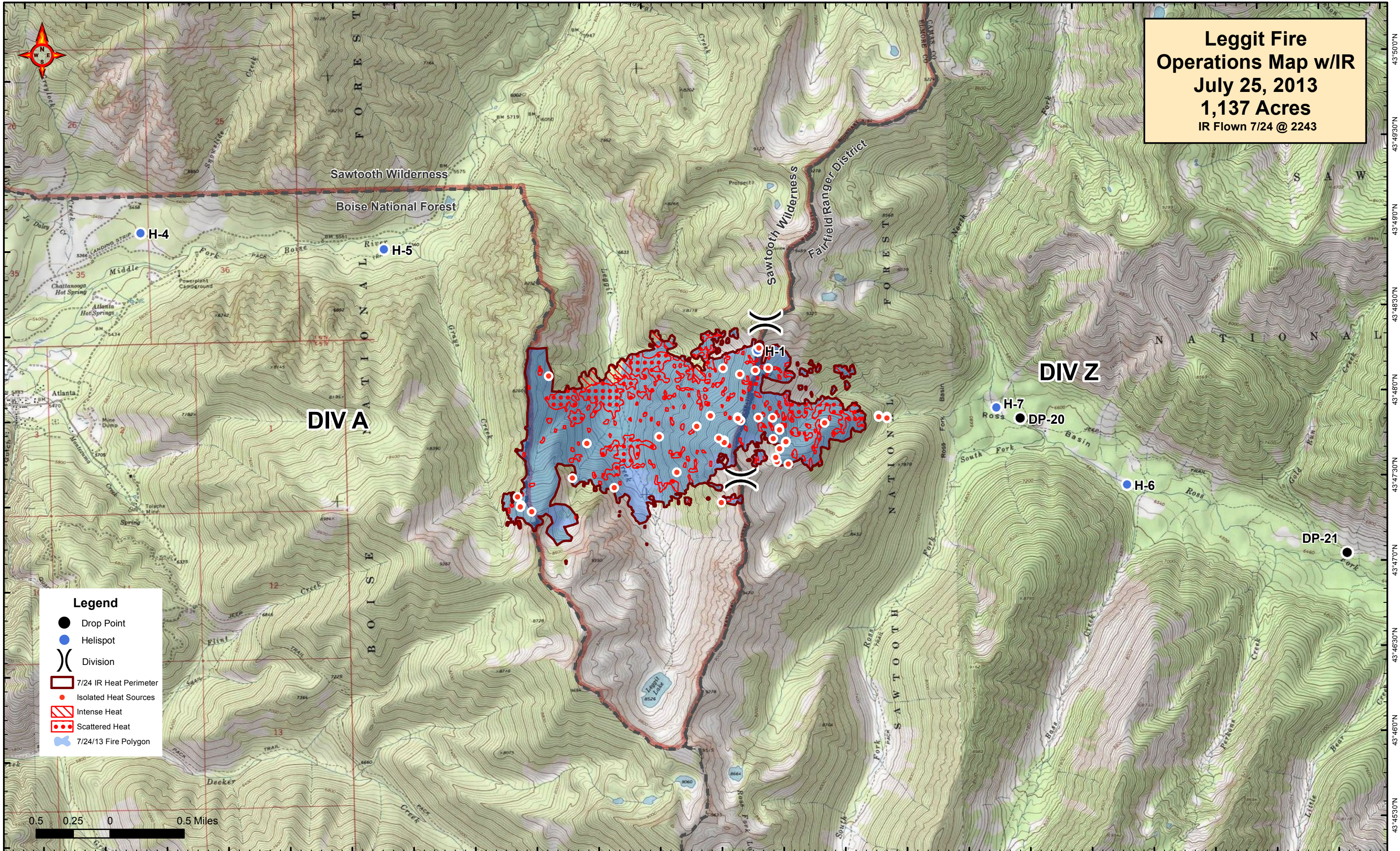


115°7'30"W 115°7'0"W 115°6'30"W 115°6'0"W 115°5'30"W 115°5'0"W 115°4'30"W 115°4'0"W 115°3'30"W 115°3'0"W 115°2'30"W 115°2'0"W 115°1'30"W 115°1'0"W 115°0'30"W 115°0'0"W 114°59'30"W 114°59'0"W 114°58'30"W 114°58'0"W 114°57'30"W 114°57'0"W 114°56'30"W

**Leggit Fire
Operations Map w/IR
July 25, 2013
1,137 Acres
IR Flown 7/24 @ 2243**



Legend

- Drop Point
- Helispot
-) Division
- ▭ 7/24 IR Heat Perimeter
- Isolated Heat Sources
- ▨ Intense Heat
- ⋯ Scattered Heat
- ⊕ 7/24/13 Fire Polygon

0.5 0.25 0 0.5 Miles

43°50'0"N 43°49'30"N 43°49'0"N 43°48'30"N 43°48'0"N 43°47'30"N 43°47'0"N 43°46'30"N 43°46'0"N