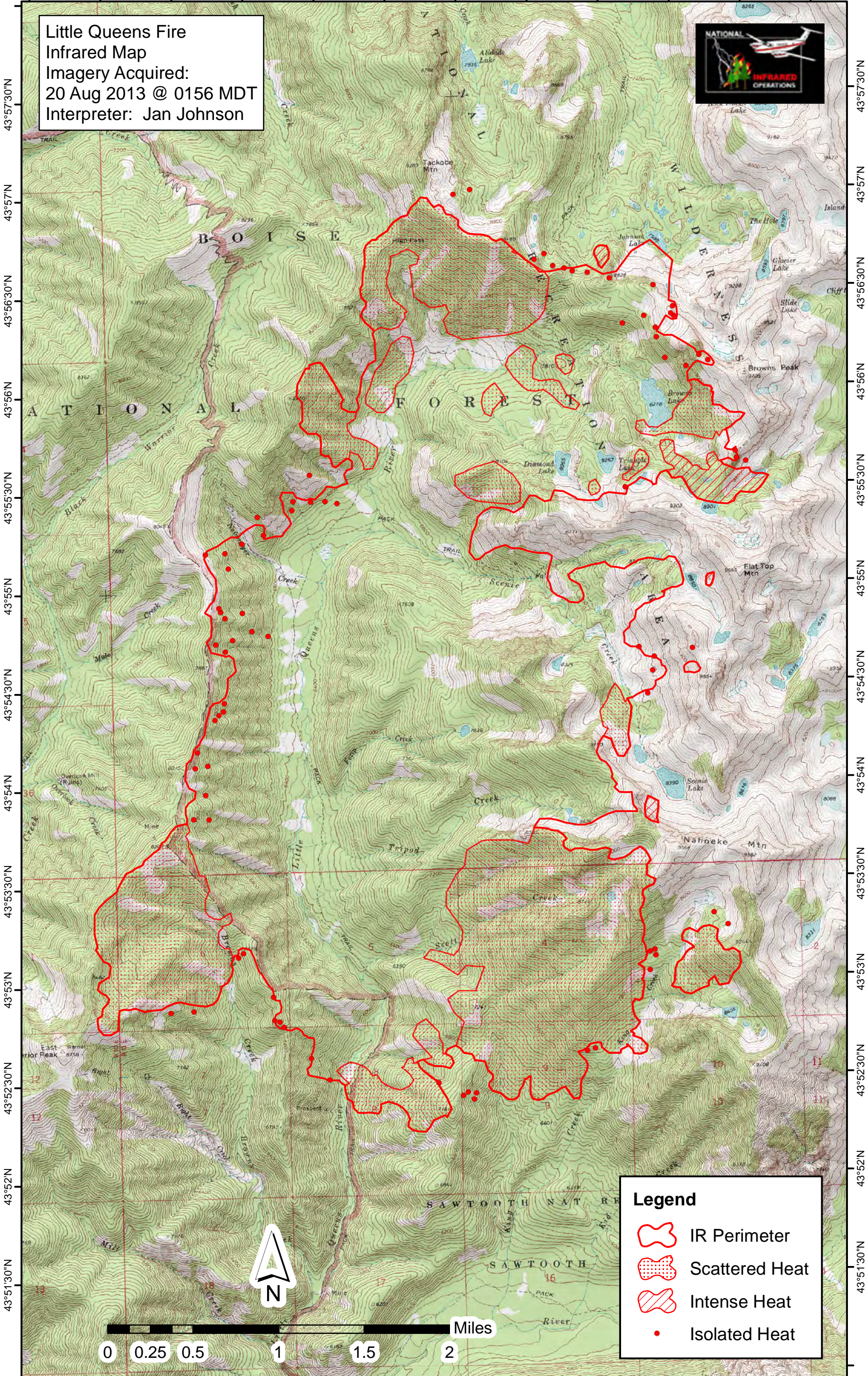
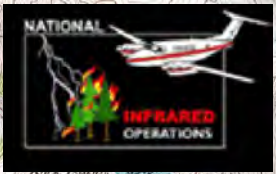


115°13'W 115°12'30"W 115°12'W 115°11'30"W 115°11'W 115°10'30"W 115°10'W 115°9'30"W 115°9'W 115°8'30"W 115°8'W 115°7'30"W





Little Queens Fire
Infrared Map
Imagery Acquired:
20 Aug 2013 @ 0156 MDT
Interpreter: Jan Johnson



43°57'30"N
43°57'N
43°56'30"N
43°56'N
43°55'30"N
43°55'N
43°54'30"N
43°54'N
43°53'30"N
43°53'N
43°52'30"N
43°52'N
43°51'30"N

43°57'30"N
43°57'N
43°56'30"N
43°56'N
43°55'30"N
43°55'N
43°54'30"N
43°54'N
43°53'30"N
43°53'N
43°52'30"N
43°52'N
43°51'30"N

Legend

-  IR Perimeter
-  Scattered Heat
-  Intense Heat
-  Isolated Heat



115°13'W 115°12'30"W 115°12'W 115°11'30"W 115°11'W 115°10'30"W 115°10'W 115°9'30"W 115°9'W 115°8'30"W 115°8'W 115°7'30"W