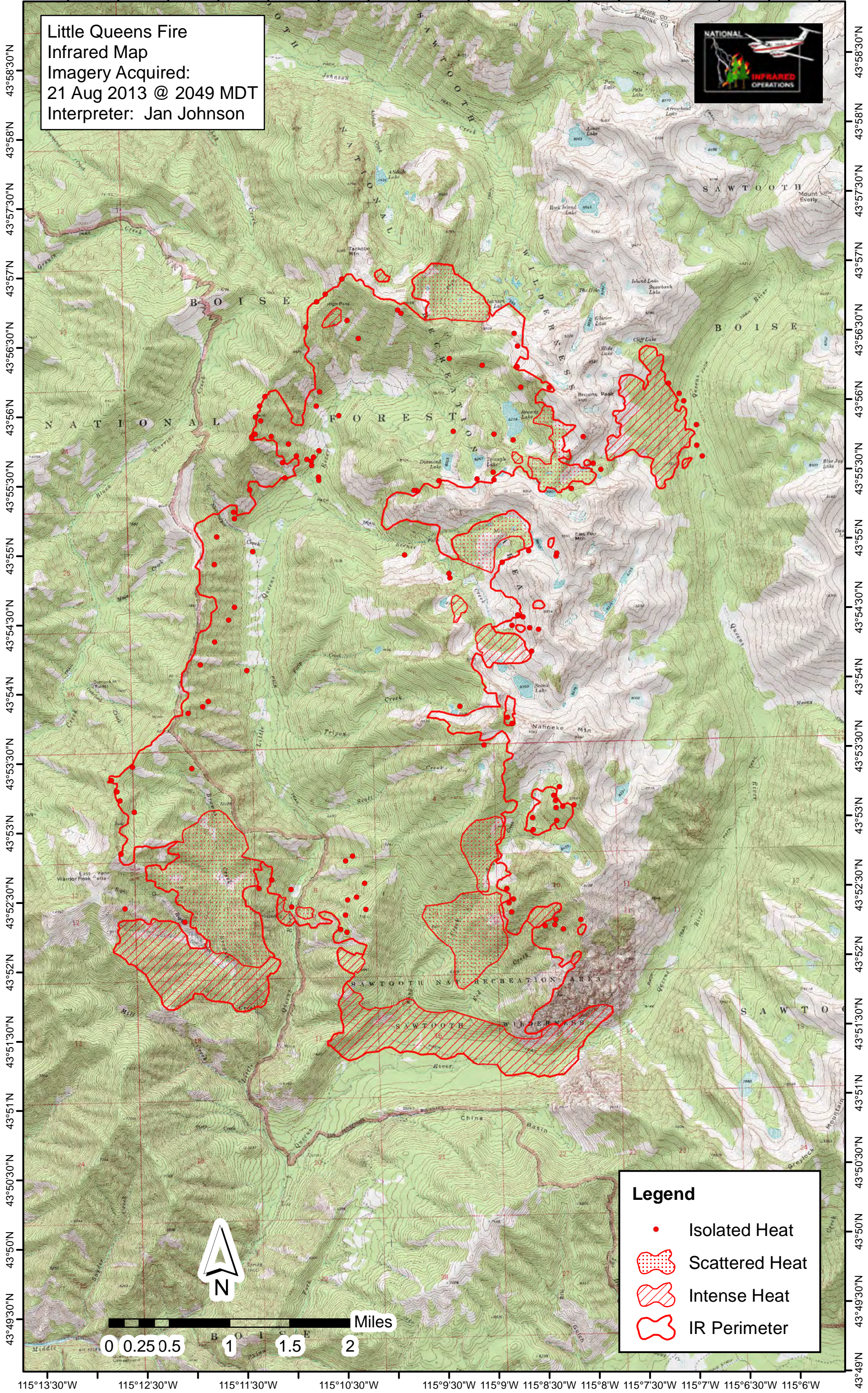
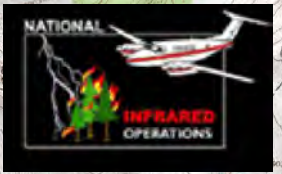


115°12'30"W 115°11'30"W 115°10'30"W 115°9'30"W 115°9'W 115°8'30"W 115°8'W 115°7'30"W 115°7'W 115°6'30"W 115°6'W 115°5'30"W

Little Queens Fire
Infrared Map
Imagery Acquired:
21 Aug 2013 @ 2049 MDT
Interpreter: Jan Johnson







43°58'30"N
43°58'
43°57'30"N
43°57'
43°56'30"N
43°56'
43°55'30"N
43°55'
43°54'30"N
43°54'
43°53'30"N
43°53'
43°52'30"N
43°52'
43°51'30"N
43°51'
43°50'30"N
43°50'
43°49'30"N
43°49'

43°58'30"N
43°58'
43°57'30"N
43°57'
43°56'30"N
43°56'
43°55'30"N
43°55'
43°54'30"N
43°54'
43°53'30"N
43°53'
43°52'30"N
43°52'
43°51'30"N
43°51'
43°50'30"N
43°50'
43°49'30"N
43°49'



Legend

-  Isolated Heat
-  Scattered Heat
-  Intense Heat
-  IR Perimeter

115°13'30"W 115°12'30"W 115°11'30"W 115°10'30"W 115°9'30"W 115°9'W 115°8'30"W 115°8'W 115°7'30"W 115°7'W 115°6'30"W 115°6'W