

# PINE CREEK FIRE



THURSDAY, JULY 18, 2013

DAY: 0630-2030

PNHQ01

(1502)

ID-SWS-000471

GPS: NAD 83 - FORMAT: DD MM. MM

<p style="text-align: center;"><b>Incident Objectives</b></p>	<p>1. Incident Name  PINE CREEK</p>	<p>2. Date Prepared  07/17/13</p>	<p>3. Time Prepared  1739</p>															
<p>4. Operational Period  07/18/13 Thursday DAY Shift 0630 - 2030</p>																		
<p>5. General Control Objectives for the incident (include alternatives)</p> <p>GOALS:</p> <ol style="list-style-type: none"> <li>1. PROVIDE FOR PUBLIC AND FIREFIGHTER SAFETY.</li> <li>2. UTILIZE BOISE COUNTY RURAL FIRE DISTRICT PERSONNEL FOR PROTECTION OF ADJACENT LANDS IN THE HIGHWAY 21, GRIMES CREEK AND CLEAR CREEK AREAS.</li> <li>3. PROVIDE CURRENT INFORMATION TO THE ADJACENT PUBLIC.</li> </ol> <p>OBJECTIVES:</p> <ol style="list-style-type: none"> <li>1. KEEP THE PINE CREEK FIRE EAST OF THE GRIMES CREEK ROAD.</li> <li>2. KEEP THE PINE CREEK FIRE WEST OF WILDCAT GULCH (FR 311).</li> <li>3. KEEP THE PINE CREEK FIRE NORTH OF ADJACENT PUBLIC LAND IN THE CLEAR CREEK AREA.</li> <li>4. KEEP THE PINE CREEK FIRE SOUTH OF WARM SPRINGS POINT.</li> <li>5. PROVIDE FOR STRUCTURE PROTECION ALONG THE GRIMES CREEK ROAD AND THE HIGHWAY 21 CORRIDOR.</li> </ol>																		
<p>6. Weather Forecast for Period</p> <p>SEE ATTACHED WEATHER FORECAST</p>																		
<p>7. General Safety Message</p> <p>SEE ATTACHED SAFETY MESSAGE</p>																		
<p>8. Attachments (mark if attached)</p>																		
<table border="0" style="width: 100%;"> <tr> <td><input checked="" type="checkbox"/> Organization List - ICS 203</td> <td><input checked="" type="checkbox"/> Incident Map</td> <td><input type="checkbox"/></td> </tr> <tr> <td><input checked="" type="checkbox"/> Div. Assignment Lists - ICS 204</td> <td><input checked="" type="checkbox"/> Safety Message</td> <td><input type="checkbox"/></td> </tr> <tr> <td><input checked="" type="checkbox"/> Communications Plan - ICS205</td> <td><input type="checkbox"/> Traffic Plan</td> <td><input type="checkbox"/></td> </tr> <tr> <td><input checked="" type="checkbox"/> Medical Plan - ICS 206</td> <td><input type="checkbox"/></td> <td><input type="checkbox"/></td> </tr> <tr> <td><input checked="" type="checkbox"/> Air Operations Summary - ICS 220</td> <td><input type="checkbox"/></td> <td><input type="checkbox"/></td> </tr> </table>				<input checked="" type="checkbox"/> Organization List - ICS 203	<input checked="" type="checkbox"/> Incident Map	<input type="checkbox"/>	<input checked="" type="checkbox"/> Div. Assignment Lists - ICS 204	<input checked="" type="checkbox"/> Safety Message	<input type="checkbox"/>	<input checked="" type="checkbox"/> Communications Plan - ICS205	<input type="checkbox"/> Traffic Plan	<input type="checkbox"/>	<input checked="" type="checkbox"/> Medical Plan - ICS 206	<input type="checkbox"/>	<input type="checkbox"/>	<input checked="" type="checkbox"/> Air Operations Summary - ICS 220	<input type="checkbox"/>	<input type="checkbox"/>
<input checked="" type="checkbox"/> Organization List - ICS 203	<input checked="" type="checkbox"/> Incident Map	<input type="checkbox"/>																
<input checked="" type="checkbox"/> Div. Assignment Lists - ICS 204	<input checked="" type="checkbox"/> Safety Message	<input type="checkbox"/>																
<input checked="" type="checkbox"/> Communications Plan - ICS205	<input type="checkbox"/> Traffic Plan	<input type="checkbox"/>																
<input checked="" type="checkbox"/> Medical Plan - ICS 206	<input type="checkbox"/>	<input type="checkbox"/>																
<input checked="" type="checkbox"/> Air Operations Summary - ICS 220	<input type="checkbox"/>	<input type="checkbox"/>																
<p>9. Prepared by (Planning Section Chief) EVAN BOSHELL</p>	<p>10. Approved by (Incident Commander) JOHN KIDD</p>																	

ORGANIZATION ASSIGNMENT LIST		9. Operations Section	
1. Incident Name <b>PINE CREEK FIRE</b>		Field Operations	Tracy Swenson
2. Date Prepared <b>July 17, 2013</b>		Planning Operations	Buz VanSike Chris Delaney (T)
3. Time <b>1700</b>		<b>a. Branch I</b>	
4. Operational Period <b>JULY 18, 2012 0630-2030</b>		Branch Director	
<b>Position</b>	<b>Name</b>	Division/Group	Div A Jason Kirks Ross Wise (T)
<b>5. Incident Commander</b>		Division/Group	Div B Matt Call
Incident Commanders	John Kidd	Division/Group	Div Y Clint Coates
Incident Commander (T)	Chris Wilcox	Division/Group	Div Z Brian Keating
Safety Officers	Steve Davis Craig Carrol	Division/Group	Structure Rob Smolczynski Josh Erickson (T)
Information Officer	Jesse Bender Barbara Bassler	Division/Group	
<b>6. Agency Representative</b>		Division/Group	
Agency	Name	Division/Group	
Forest Service - Supervisor	Cecelia Seesholtz		
Forest Service - DFR/Agency Rep	Brant Petersen		
Resource Advisor	Herbert Roerick		
Resource Advisor	John Wallace		
IDL	Julia Sullens		
Boise County Sheriff	Ben Roeber		
<b>7. Planning Section</b>		<b>b. Branch II</b>	
Chief	Evan Boshell Linda Chappell (T)	Branch Director	
Resources Unit	Clark Tucker Gary Peck(T)	Division/Group	
Documentation Unit	Clark Tucker	<b>c. Branch III</b>	
Demob Unit	Keri Vest	Branch Director	
Situation Unit	Renee Flanagan Anne Benoit (T)	Division/Group	
FBAN	Joel Gosswiller	<b>d. Air Operations Branch</b>	
IMET	Chuck Redman	Air Operations Branch Director	Cameron Dingman
GIS Specialist	Sarah Peterson	Air Tactical Group Supervisor	Mike Melton
Computer Specialist	Heidi Little	Air Tactical Group Supervisor	
Status/Check-in	Cherie Ausgotharp Lindsey Neiwert (T)	Air Support Group Supervisor	Blake Ford
<b>8. Logistics Section</b>		HEB1	Andy Guest Mark Oetzman (T)
Chief	Brent Crosland	HEB2	
Supply Unit	Nan Coates	<b>10. Finance Section</b>	
Facilities Unit	Clay Stewart	Chief	Wendy Soper
Ground Support Unit	Art Partridge	Time Unit	Gloria McCabe Karen Bertrand(T)
Communications Unit	Steve Robertson	PTRC/EQTR	Shawn Atkinson (T)
Medical Unit	Deb Lopez Matt Payne (T)	Cost Unit	Dave Burley Sharon Ringsven (T)
Ordering Mgr	Kimberly Soper	Compensation/Claims Unit	Sally Kuhlberg
Receiving Mgr	Sean Stewart	Procurement Unit Leader	
Security Mgr	Veldon Burgess	Prepared by Resource Unit Leader	
Food Unit	Kevin Cassidy	<b>CLARK TUCKER</b>	

<b>Division Assignment List</b>		1. Branch		2. Division/Group <b>A</b>			
3. Incident Name <b>PINE CREEK</b>		4. Operational Period <b>07/18/13 Thursday DAY Shift 0630 - 2030</b>					
5. Operations Personnel							
Operations Chief (LINE)	TRACY SWENSON		Division/Group Supervisor	JASON KIRKS/ROSE WISE (T)			
Operations Chief (PLANS)	BUZ VANSKIKE/CHRIS DELANEY (T)		Air Attack Supervisor	MIKE MELTON			
Branch Director			Safety Officer	STEVE DAVIS			
6. Resources Assigned this Period							
Strike Team/Task Force/ Resource Designator	Leader	Num of Pers.	Trans. Y/N	Drop Off PT./Time	Pick Up PT./Time		
(C-7) CRW CHIF MOUNTAIN IHC	STILL SMOKING	20	N	FIRE 0630	SPIKE 2030		
(C-8) CRW LOGAN IHC	JON PLATT	20	N	FIRE 0630	SPIKE 2030		
(C-39) CRW SICI T2	SAVER	22	N	FIRE 0630	SPIKE 2030		
(E-3) ENG BOF 421 T4	KNEE	4	N	FIRE 0630	SPIKE 2030		
(O-36) TFLD	ZACH	1	N	FIRE 0630	SPIKE 2030		
(O-37) TFLD	CLIEZE	1	N	FIRE 0630	SPIKE 2030		
(O-33) EMPF	LANDON	1	N	FIRE 0630	SPIKE 2030		
(O-16.4) SOFR	CARROLL	1	N	FIRE 0630	SPIKE 2030		
(O-16.54) BCMG	HINRICKS	1	N	FIRE 0630	SPIKE 2030		
7. Control Operations CREATE INDIRECT HANDLINE AND DOZER LINE FROM GRIMES CREEK TO FR 311 (WILDCAT GULCH) BURNOUT AS NEEDED							
8. Special Instructions EVALUTE THE NEED FOR A SPIKE CAMP AND NOTIFY DIVS OF LOCATION BY 1000 HRS.							
9. Division/Group Communications Summary							
Function	Frequency - RX	Frequency - TX	Tone	System	Channel	System	Channel
Command	168.700	170.975	TxRx 110.9	NIFC	8		
Tactical Div/Group	168.050	168.050	RxTx 110.9	NIFC	1		
Logistics	168.3500	168.3500		NIFC	11		
Air to Ground	166.6750	166.6750		NIFC	10		
Prepared by (Resource Unit Leader) TUCKER/PECK		Approved by (Planning Section Chief) EVAN BOSHELL			Date Prepared 07/17/13		Time Prepared 1654

<b>Division Assignment List</b>		1. Branch		2. Division/Group <b>B</b>			
3. Incident Name <b>PINE CREEK</b>		4. Operational Period <b>07/18/13 Thursday DAY Shift 0630 - 2030</b>					
5. Operations Personnel							
Operations Chief (LINE)	TRACY SWENSON		Division/Group Supervisor		MATT CALL		
Operations Chief (PLANS)	BUZ VANSKIKE/CHRIS DELANEY (T)		Air Attack Supervisor		MIKE MELTON		
Branch Director			Safety Officer		STEVE DAVIS		
6. Resources Assigned this Period							
Strike Team/Task Force/ Resource Designator	Leader		Num of Pers.	Trans. Y/N	Drop Off PT./Time	Pick Up PT./Time	
(C-10) CRW PATRICK 13A	KEMP		20	N	FIRE 0630	CAMP 2030	
(C-5) CRW IDAHO CITY IHC	CARDOZA		20	N	FIRE 0630	CAMP 2030	
(C-4) CRW SAWTOOTH IHC	KRUPSKI		20	N	FIRE 0630	CAMP 2030	
ENG IDL 17 T6	RAYBORN		3	N	FIRE 0630	CAMP 2030	
(O-5) TFLD	BLACK		1	N	FIRE 0630	CAMP 2030	
(O-14) HEQB	HUMBACH		1	N	FIRE 0630	CAMP 2030	
(E-6) NOE DOZER			1	N	FIRE 0630	CAMP 2030	
(O-16.4) SOFR	CARROLL		1	N	FIRE 0630	CAMP 2030	
READ	ROERICK		1	N	FIRE 0630	CAMP 2030	
READ	WALLACE		1	N	FIRE 0630	CAMP 2030	
READ	WATSON		1	N	FIRE 0630	CAMP 2030	
(O-23) READ	BODLE		1	N	FIRE 0630	CAMP 2030	
7. Control Operations ASSIST WITH BURNOUT AND PATROL FROM A/B BREAK TO Y/B BREAK							
8. Special Instructions							
9. Division/Group Communications Summary							
Function	Frequency - RX	Frequency - TX	Tone	System	Channel	System	Channel
Command	168.700	170.975	TxRx 110.9	NIFC	8		
Tactical Div/Group	168.050	168.050	RxTx 110.9	NIFC	1		
Logistics	168.3500	168.3500		NIFC	11		
Air to Ground	166.6750	166.6750		NIFC	10		
Prepared by (Resource Unit Leader) TUCKER/PECK		Approved by (Planning Section Chief) EVAN BOSHELL			Date Prepared 07/17/13		Time Prepared 1655

<b>Division Assignment List</b>		1. Branch			2. Division/Group		
					<b>Y</b>		
3. Incident Name		4. Operational Period					
PINE CREEK		07/18/13			Thursday		DAY Shift 0630 - 2030
<b>5. Operations Personnel</b>							
Operations Chief (LINE)	TRACY SWENSON	Division/Group Supervisor		CLINT COATES			
Operations Chief (PLANNING)	BUZ VANSKIKE/CHRIS DELANEY (T)	Air Attack Supervisor		MIKE MELTON			
Branch Director		Safety Officer		STEVE DAVIS			
<b>6. Resources Assigned this Period</b>							
Strike Team/Task Force/ Resource Designator	Leader	Num of Pers.	Trans. Y/N	Drop Off PT./Time	Pick Up PT./Time		
(C-9) CRW PATRICK 13 B	TEEL	20	N	FIRE 0630	SPIKE 2030		
(O-29) AMEF	HARDY	1	N	FIRE 0630	SPIKE 2030		
(O-6) SOF2	SHOEMAKER	1	N	FIRE 0630	SPIKE 2030		
<b>7. Control Operations</b>							
CONTINUE HANDLINE CONSTRUCTION AND EVALUATE NEED FOR BURNOUT FROM Z/Y BREAK TO Y/B BREAK							
<b>8. Special Instructions</b>							
EVALAUTE NEED FOR SPIKE CAMP AND NOTIFY DIVS BY 1000 HRS.							
<b>9. Division/Group Communications Summary</b>							
Function	Frequency - RX	Frequency - TX	Tone	System	Channel	System	Channel
Command	168.700	170.975	TxRx 110.9	NIFC	8		
Tactical Div/Group	168.600	168.600	RxTx 110.9	NIFC	3		
Logistics	168.3500	168.3500		NIFC	11		
Air to Ground	166.6750	166.6750		NIFC	10		
Prepared by (Resource Unit Leader)			Approved by (Planning Section Chief)		Date Prepared	Time Prepared	
TUCKER/PECK			EVAN BOSHELL		07/17/13	1655	

<b>Division Assignment List</b>	1. Branch	2. Division/Group <b>STRUCTURE</b>
---------------------------------	-----------	---------------------------------------

3. Incident Name <b>PINE CREEK</b>	4. Operational Period <b>07/18/13 Thursday DAY Shift 0630 - 2030</b>
---------------------------------------	---

5. Operations Personnel					
-------------------------	--	--	--	--	--

Operations Chief (LINE)	TRACY SWENSON	Division/Group Supervisor	ROB SMOLCZNSKI/ERICKSON (T)		
Operations Chief (PLANS)	BUZ VANSKIKE/CHRIS DELANEY (T)	Air Attack Supervisor	MIKE MELTON		
Branch Director		Safety Officer	STEVE DAVIS		

6. Resources Assigned this Period					
-----------------------------------	--	--	--	--	--

Strike Team/Task Force/ Resource Designator	Leader	Num of Pers.	Trans. Y/N	Drop Off PT./Time	Pick Up PT./Time
ENG CLEAR CREEK 702	BOBOVICH	4	N	FIRE 0630	CAMP 2030
ENG CLEAR CREEK 742	GREEN	3	N	FIRE 0630	CAMP 2030
WT2 WILDERNESS RANCH T222	MURRAY	2	N	FIRE 0630	CAMP 2030
ENG WILDERNESS RANCH T243 T6	MILLER	2	N	FIRE 0630	CAMP 2030
ENG WILDERNESS RANCH T244 T6	HECKATHORN	2	N	FIRE 0630	CAMP 2030
WT2 VALLEY OF THE PINES 1121	CANO	2	N	FIRE 0630	CAMP 2030
ENG VALLEY OF THE PINES 1141 T4	HANEY	2	N	FIRE 0630	CAMP 2030

7. Control Operations  
DISCUSS AND COMPLETE STRUCTURE PROTECTION PLAN

8. Special Instructions

9. Division/Group Communications Summary							
--	--	--	--	--	--	--	--

Function	Frequency - RX	Frequency - TX	Tone	System	Channel	System	Channel
Command	168.700	170.975	TxRx 110.9	NIFC	8		
Tactical Div/Group	154.2950	154.2950		NIFC	7		
Logistics	168.3500	168.3500		NIFC	11		
Air to Ground	166.6750	166.6750		NIFC	10		

Prepared by (Resource Unit Leader) <b>TUCKER/PECK</b>	Approved by (Planning Section Chief) <b>EVAN BOSHELL</b>	Date Prepared <b>07/17/13</b>	Time Prepared <b>1656</b>
--	---	----------------------------------	------------------------------

<b>Division Assignment List</b>		1. Branch		2. Division/Group <b>Z</b>			
3. Incident Name <b>PINE CREEK</b>		4. Operational Period <b>07/18/13 Thursday DAY Shift 0630 - 2030</b>					
5. Operations Personnel							
Operations Chief	TRACY SWENSON		Division/Group Supervisor	BRIAN KEATING			
Operations Chief	BUZ VANSKIKE/CHRIS DELANEY (T)		Air Attack Supervisor	MIKE MELTON			
Branch Director			Safety Officer	STEVE DAVIS			
6. Resources Assigned this Period							
Strike Team/Task Force/ Resource Designator	Leader	Num of Pers.	Trans. Y/N	Drop Off PT./Time	Pick Up PT./Time		
(C-3) CRW BOF #3	CLACK	20	N	FIRE 0630	CAMP 2030		
(E-8) S/T - ENGINE - T4 - IDAHO BLM				FIRE 0630	CAMP 2030		
(E-8.7) STEN	MOREAU	1	N	FIRE 0630	CAMP 2030		
(E-8.5) ENG 2414	WEST	4	N	FIRE 0630	CAMP 2030		
(E-8.6) ENG 2405	STAUFFER	4	N	FIRE 0630	CAMP 2030		
(E-8.4) ENG 3441	HOFFIAN	5	N	FIRE 0630	CAMP 2030		
(E-8.2) ENG 1434	BUTLER	4	N	FIRE 0630	CAMP 2030		
(E-8.3) ENG 1436	HALL	4	N	FIRE 0630	CAMP 2030		
(O-30) AMEF	CRITTENDEN	1	N	FIRE 0630	CAMP 2030		
(O-6) SOFL	SHOEMAKER	1	N	FIRE 0630	CAMP 2030		
7. Control Operations CONTINUE PATROLLING ALONG GRIMES CREEK ROAD AND EVALUATE SNAGS AND DOWNED TREES ALONG ROADWAYS							
8. Special Instructions							
9. Division/Group Communications Summary							
Function	Frequency - RX	Frequency - TX	Tone	System	Channel	System	Channel
Command	168.700	170.975	TxRx 110.9	NIFC	8		
Tactical Div/Group	164.1375	164.1375	RxTx 110.9	NIFC	4		
Logistics	168.3500	168.3500		NIFC	11		
Air to Ground	168.3500	168.3500		NIFC	11		
Prepared by (Resource Unit Leader) TUCKER/PECK		Approved by (Planning Section Chief) EVAN BOSHELL			Date Prepared 07/17/13		Time Prepared 1655



AIR OPERATIONS SUMMARY		Incident Name/Operational Period: Pine Creek 7-18-2013		Sunrise: 0618 Sunset: 2121		Aviation Bases: Idaho City Hlibase Boise Ramp			
4. Personnel and Communications	Phone Number	Air/Air Frequency	Air/Ground Frequency	5. Remarks (Spec. Instructions, Safety Notes, Hazards, Priorities)					
Air Operations Branch Director Cameron Dingman	801-550-9857	<b>124.225</b>	<b>166.675</b>	<p>All orders for aircraft tactical missions should be ordered through Air Attack or communications to helibase.</p> <p>IC or Operations must approve all non-tactical missions prior to scheduling.</p> <p><b>Keep clear of all drop zones.</b></p> <p>All orders for supplies need to go through Communications/ Supply and orders delivered to helibase.</p> <p>Keep communications short and to the point, use your signal mirrors to guide in aircraft.</p> <p>Medical emergencies need to go through Divisions to Communications/Medical Unit.</p> <p>Watch for <b>POWERLINES</b> in the fire area.</p> <p>Ensure FTA limits are followed</p> <p>Camp briefing @0600. Pilots on and preflight @0700, Aviation Briefing @0730 at the helibase. All Helibase personnel and pilots need to attend the Aviation Briefing.</p> <p><b>All Aircraft need to ensure GPS Units are set to <u>NAD 83</u> and <u>DD MM SS</u></b></p> <p>Retardant is available in Boise....Request through Air Attack.</p>					
Air Support Group Supervisor Blake Ford	435-979-0452	<b>135.725</b>							
Helibase Manager Andy Guest	208-315-5224								
Helibase Manager Trainee Mark Oetzmann			<b>State F2 Medivac Helo's 155.280 TX Tone 156.7</b>						
6. Location/Function	7. Assignment	8. Fixed Wing		9. Helicopters		10. Time		11. Aircraft Assigned	12. Operating Base
		No.	Type	No.	Type	Available	Commence		
All Divisions	Air Tactical	3	1			0800	0830	N532SA AC-500 19V AC-500 0FD AC-690	Boise
All Divisions	Bucket Work			2	2	0900	0930	N932CH B-205++ N80NH Bell UH1H	Idaho City Idaho City
All Divisions	Recon Medivac			1	3	0900	0930	N722LM	Idaho City
13. Totals		3		3					
14. Air Operations Support Equipment: None				15. Prepared by (include Date and Time) Cameron Dingman 7-17-2013 1800					

## Helicopter Missions

Type 2 Helicopters-Bucket Support, sling missions, crew shuttle as requested.

Type 3 Helicopters-Operations Section Recon in AM and,PM, bucket work, and Medivac as requested.

## TFR Information

3/4962 34 45 50N 115 56 57W 5 miles Surface to 9000

Notam 07/113 Idaho City Airport Closure

## Dipsite Information

<u>Name</u>	<u>Latitude</u>	<u>Longitude</u>	<u>DIV Location</u>	<u>Elevation</u>	<u>IGE/OGE</u>
West Grimes Creek	43 45.145	115 58.583	Div Z	3600 MSL	OGE

## Helispot Information

<u>H#</u>	<u>Latitude</u>	<u>Longitude</u>	<u>Elevation</u>	<u>IGE/OGE</u>
Helibase H-1	43 49.392	11550.776		IGE

## Medivac Information

In the event a medevac is necessary, the Division Supervisor will notify Incident Communications Unit of the incident. The Division Supervisor and on scene medical personnel will determine if the incident is a **Medivac** or **Medical Transport**. The Medical Unit will notify Boise Dispatch if Life Flight will be used. In either case, the helibase may need to respond with a helicopter if it is deemed to be the appropriate resource to transport the patient. Depending on the severity of injury, the incident helicopter will transport the patient to either the helibase or a local hospital. An EMT from the Medical Unit will be stationed at the helibase as one becomes available

Local Hospital information is located in the IAP and the local Crash Rescue/Evacuation Plan.

## Operations Recons

Communications with Operations and Division Supervisors during Recons should be conducted on Division Tactical Channels so as not to interfere with other Tactical Missions on the Incident.

## Incident Action Plan Weather Forecast

**FORECAST NO:** 2  
**PREDICTION FOR:** Day Shift  
**SHIFT DATE:** 07/18/2013  
**TIME AND DATE**  
**FORECAST ISSUED:** 2000 07/17/2013

**NAME OF FIRE:** Pine Creek Fire  
**UNIT:** Idaho Dept of Lands  
**SIGNED:** Chuck Redman  
**Incident Meteorologist**

### **\*\*\*Hot and dry with Haines 5 conditions Thursday – 6 on Friday\*\*\***

An upper ridge over the central United States will slowly move into Nevada/Utah area through Friday. This brings continued above normal temperatures along with moderate to high Haines indices to the region. The upper low that brushed the region Tuesday and Wednesday spread much drier air over the region. This brings very low afternoon humidity to the region along with poor to moderate nighttime RH recovery the next few days. Light northwest winds aloft and a light pressure gradient means terrain driven winds are expected in the valleys and light winds over the ridges today and Friday.

#### **Today**

**WEATHER:** Sunny and continued hot.  
**TEMPERATURES:** upper 80s over the higher ridges to mid 90s lower valleys.  
**HUMIDITY:** Minimum RH 8 to 14%.  
**WIND (Eye Level)** Upslope 1 to 3 mph in the morning becoming upvalley 4 to 6 mph by the afternoon.  
Ridgeline winds west to northwest 5 to 10 mph.

**Chance of Wetting Rain:** 0 percent.

**Lightning Activity:** 1. Inversion breaking around 1300 hrs.

**Haines Index:** 5 (Moderate).

#### **Outlook for Tonight**

**WEATHER:** Clear.  
**TEMPERATURES:** around 55 valley bottom to 60 midslopes and ridges.  
**HUMIDITY:** Max 50 percent valley bottoms to around 40 percent ridges.  
**WIND (Eye Level):** Down drainage 3 to 6 mph after sunset.  
Ridges: Northwest around 5 mph.

**Chance of Wetting Rain:** 0 percent

**Lightning Activity Level:** 1

**Haines Index:** 5 (Moderate).

#### **Outlook for Friday:**

**WEATHER:** Sunny.  
**TEMPERATURES:** 90 ridges and 95 to 98 lower valleys.  
**HUMIDITY:** Minimum RH 8 to 14%.  
**WIND (Eye Level):** Upslope 1 to 3 mph in the morning becoming upvalley 4 to 6 mph by the early afternoon.  
Ridgeline winds Northwest around 6 to 8 mph with afternoon gusts to 15 mph.

**Chance of Wetting Rain:** 0%

**Lightning Activity Level:** 1.

**Haines Index:** 6 (High).

**Outlook for Saturday and Sunday...**Mostly sunny. Highs in the 90s. Lows 55 to 65. Min RH 8 to 15 percent with overnight recovery to 30 to 40%. Terrain driven winds to 8 mph with ridgeline winds west to northwest 5 to 15 mph.

	Max Temp	Min Temp	Max RH	Min RH
Town Creek Raws (4500 Ft)	94	59	86%	14%
Bogus Basin (6500 Ft)	77	55	86%	22%
Idaho City	94	57	---	---

# FIRE BEHAVIOR FORECAST

FORECAST NUMBER: 2

TYPE OF FIRE: Wildfire

FIRE NAME: Pine Creek

OPERATIONAL PERIOD: 6:30-20:30 July 18, 2013

DATE ISSUED: July 17, 2013

TIME ISSUED: 20:30

UNIT: Idaho Department of Lands, SWIFPD  
Boise National Forest, Idaho City R.D.

SIGNED: *Joel Gosswiller*  
Joel Gosswiller, FBAN

## INPUTS

WEATHER SUMMARY: See Attached Fire Weather Forecast.

**FUELS:** The fire is primarily burning in open ponderosa pine (Fuel Model 9) with a brush and timber litter understory in drainages and on north and east aspects with needlecast, grass, and light brush on the south and west aspects. There are pockets of Douglas fir on higher elevations on north aspects which have been less likely to torch than the pine, but surface fuels are still consuming. There are several brush fields on all aspects near ridgeline. Live fuel moisture in the brush is acting to moderate fire behavior somewhat, but headfire can spread actively through the brush. Watch out for freeze kill in the buckbrush (ceonothus) which will increase fire behavior. Dead fuel moistures are tracking near record lows for this time of year and large diameter fuels are burning down to ash.

## OUTPUTS

### FIRE BEHAVIOR

#### GENERAL:

Fire has been primarily spreading as a surface fire in timber litter, grass, and brush with single and group tree torching and short to mid-range spotting. Most spotting has been 100-200 yards, but on the first day of the fire spotting was observed nearly  $\frac{3}{4}$  mile from the main fire.

Fire behavior is staying active late into the night with minimal relative humidity recovery and a thermal belt mid slope. Watch for fire behavior to increase as the inversion lifts around 1300.

Probability of Ignition (PI) is 70% to 90% or greater, which means high probability of numerous spot fires.

Watch for rollout on steep slopes where spots can establish quickly and burn back upslope/up drainage.

Fuel model 9, Fine Dead Fuel moisture 3%, Slope 60-90%, Eye level winds 6-10 mph:

	<u>Head Fire</u>	<u>Backing Fire</u>
Flame Length	5-8 feet	1-2 feet
Rate of Spread	2,000-3,000 feet/hour	200-300 feet/hour

#### SPECIFIC:

**Division A:** The fire continues to back down a north aspect. Watch for slope reversal if fire crosses drainage bottoms as fire behavior will increase dramatically with up-slope runs. Know your escape routes and safety zones!

**Division B and Y:** Watch for any rollout that could cross control lines and run back upslope to the fireline. There is still heat along the line in the north end of Division B. Any torching could cause spotting over the control line.

**Division Z:** Watch for rollout that could cross Grimes Creek. Any spot fire that establishes has the potential to run upslope to the west of the fire.

#### AIR OPERATIONS:

Morning smoke inversions will limit visibility in the valleys.

## SAFETY

**Watchout Situation 14- Weather is getting hotter and drier!**

Incident Radio Communications Plan		1. Incident Name PINE CREEK		2. Operational Period 07/18/13 Thursday DAY Shift 0630 - 2030		
3. Basic Radio Channel Utilization						
Radio Type	Channel	Function	Frequency/Tone		Assignment	Remarks
NIFC	1	TAC1	RX 168.050	TX 168.050	DIVISION A	
			RxTx 110.9			
NIFC	2	TAC 2	RX 168.200	TX 168.200	DIVISION B	
			RxTx 110.9			
NIFC	3	TAC 3	RX 168.600	TX 168.600	DIVISION Y	
			RxTx 110.9			
NIFC	4	TAC 4	RX 164.1375	TX 164.1375	DIVISION Z	
			RxTx 110.9			
NIFC	5	TAC5	RX 166.7250	TX 166.7250	UNASSIGNED	
			RxTx 110.9			
NIFC	6	TAC 6	RX 166.7750	TX 166.7750	UNASSIGNED	
			RxTx 110.9			
NIFC	7	TAC 7	RX 154.2950	TX 154.2950	STRUCTURE PROTECTION	
NIFC	8	COMMAND 8	RX 168.700	TX 170.975	COMMAND	FIRE TO ICP
			TxRx 110.9			
NIFC	10	AIR TO GROUND	RX 166.6750	TX 166.6750	PRIMARY AIR TO GROUND	
NIFC	11	LOGISTICS/CAMP	RX 168.3500	TX 168.3500	ICP	
NIFC	12	SHAW MTN RPT	RX 172.2000	TX 165.4125		
			Tx 110.9			
NIFC	13	THORN CR RPT	RX 172.2000	TX 165.4125		
			Tx 146.2			
NIFC	14	EMLF	RX 155.2800	TX 155.2800		EMERGENCY MEDICAL AND LIFE FLIGHT
			Tone Tx 156.7			
NIFC	16	AIR GUARD	RX 168.6250	TX 168.6250		EMERGENCY ONLY

4. Prepared by (Communications Unit) STEVE ROBERTSON				5. Date Prepared 07/17/13	6. Time Prepared 1731
---	--	--	--	------------------------------	--------------------------

Incident: Pine Creek

Date: July,18,2013

Shift: Day



# **SAFETY MESSAGE** **SAFETY IS OUR FIRST PRIORITY**

*Fire fighter safety comes first on every fire, every time*



## **SAFETY THOUGHT**

Incident attitude needs to be positive so that it does not impair our ability to think clearly and act decisively.



How's your communications?  
are assignments clear and  
understood.



## **MAJOR HAZARDS AND RISKS**

- |   |  |
|---|--|
| <ul style="list-style-type: none"><li>• Steep slopes, rolling material</li><li>• Spotting and torching--LCES</li><li>• Lights, Seatbelts, Windshields</li><li>• Bucket drops</li><li>• Personal Hygiene--- WASH YOUR HANDS</li><li>• Fire Access Roads .Slow Down</li></ul> | <ul style="list-style-type: none"><li>• Snags! Snags! Snags!—Heads Up!</li><li>• US 21 traffic</li><li>• Dehydration</li><li>• <b>New communication plan</b></li><li>• Minimal fire activity( heads up )</li></ul> |
|---|--|

## **Are You Prepared ?**



**Did you get the new communication plan programmed in your radio.**

**Are you drinking plenty of water and fluids.**

**Do you have what you need to stay healthy.**

**Are there medical needs you haven't taken care of ( blisters, insect bites ect ).**

**Are you willing to let your supervisor know you don't feel well before you need medical attention. ( It's Hot ).**

**Line**  
**Safety Officers: Kraig Carroll , Bob Shoemaker**

**Safety Officer: Steve Davis**

DIV	TACTICAL WATCHOUTS	<b>LCES HAZARD CONTROL</b> <b>** Denotes Common Denominator of Tragedy Fires</b>
A,B,Y A,B,Y A,B,Y A,B,Y ALL ALL ALL	Downhill Fire line Under-slung Fire line Mid-slope Fire line Frontal Assault Unburned Fuel Unanchored Line <b>Light Fuels**</b> <b>Uphill Runs**</b> <b>Indirect Fire line</b>	<ul style="list-style-type: none"> <li>• Staff dedicated lookouts at pre-identified vantage points</li> <li>• Staff aerial lookout. During major threatening activity, assess &amp; provide direction</li> <li>• Establish human repeater site</li> <li>• Take hourly weather observations over command frequency</li> <li>• Abort assignment if communications cannot be maintained</li> <li>• Weather watch system to be developed by FBAN/Meteorologist</li> <li>• Flag, time, improve/construct multiple escape routes and safety zones</li> <li>• Establish situation trigger points for disengagement/exit to safety zones</li> <li>• Improve/construct safety zones prior to tactical operations</li> </ul>
ALL	Spotting Torching Crown Runs	<ul style="list-style-type: none"> <li>• Post lookouts ; Watch for smoldering fires picking up over large areas, trees crowning out inside of fire line, high sustained rate of spread, well-developed convection column, hot/dry weather</li> <li>• Grid green areas ; Patrol for spots especially after torching</li> </ul>
	Crew Fatigue <b>Altitude Sickness</b>	<ul style="list-style-type: none"> <li>• Take rest breaks. Limit work to 2:1 work-rest ratio. Rotate crews out after 14 days.</li> <li>• Check feet, upper respiratory, attitude (complacency) Allow no horseplay.</li> </ul>
	Intruder Aircraft	<ul style="list-style-type: none"> <li>• Designate TFR over the air operations area. Report airspace conflicts/ intrusion immediately to Air Support</li> <li>• Curtail air operations, as needed, until airspace is clear</li> </ul>
	Air Support Dependent	<ul style="list-style-type: none"> <li>• Staff dedicated lookouts at pre-identified vantage points.</li> <li>• Staff aerial lookout. During major threatening activity, assess &amp; provide direction</li> <li>• Do go/no go assessment for ground operations. Ensure that firefighter safety is not compromised</li> </ul>
All-----	Bucket Drops Retardant Drops	<ul style="list-style-type: none"> <li>• Ensure clear air-ground communications, stay clear of flight/drop zones, watch for snags/hazard trees.</li> <li>• Watch out for rotor wash or air tanker turbulence and potentially erratic fire behavior.</li> </ul>
	Air Crew Shuttles	<ul style="list-style-type: none"> <li>• Ensure that a Chief of Party is assigned for transport of multiple personnel</li> <li>• Ensure proper wearing of PPE. Follow instructions of Helitack for loading and unloading.</li> </ul>
ALL----- ALL----- ALL----- ALL----- ALL-----	RH<25% Temps >85F Direct Sun Dead/Dying Fuels Fuel Loads >10T/Ac <b>Winds&gt;10MPH**</b>	<ul style="list-style-type: none"> <li>• Watch potential for torching, spotting, re-burn, and erratic, extreme fire behavior</li> <li>• Staff dedicated lookouts at pre-identified vantage points</li> <li>• Take hourly weather observations over command frequency</li> <li>• Establish effective radio repeaters to reach all divisions. Confirm radio frequencies</li> <li>• Consider vegetation and terrain and flag and time multiple escape routes</li> <li>• Improve/construct safety zones</li> </ul>
ALL ALL	Slopes>50% Rolling Rocks	<ul style="list-style-type: none"> <li>• Identify chimneys, gullies, and/or steep slopes in work area</li> <li>• Post lookouts, issue warnings. Keep crews from below known hazard areas</li> <li>• Improve/construct, flag/time escape routes and safety zones</li> <li>• Identify, flag, avoid rock hazards. Make sure you go slowly and watch your step</li> <li>• Wear proper and good condition fire boots to avoid slips and falls.</li> <li>• Always carry tools on the downhill side. and maintain 10 feet spacing</li> </ul>
	Lightning Storms	<ul style="list-style-type: none"> <li>• Watch for sudden reversal of wind direction and increased speed, drop in temperature</li> <li>• Don't use the radio or telephone; turn off generators and electrical equipment. Put down hand tools</li> <li>• Avoid grouping together, sit/crouch, or if in open country stay in vehicle if possible</li> <li>• Avoid standing near high objects, ridge tops, open spaces, ledges, rock outcroppings</li> <li>• Keep away from wire fences; move away from horses and stock</li> </ul>
ALL----- ALL-----	Dehydration Heat Stress Altitude >9,000'	<ul style="list-style-type: none"> <li>• <b>Drink plenty of fluids (1 qt/hr); ensure adequate replacement of water supplies</b></li> <li>• <b>Limit shift lengths. Pace work; allow frequent periods of rest in shade, if possible</b></li> <li>• <b>Acclimate to extreme heat and/or altitude; schedule hardest work during cooler hours of the day</b></li> <li>• <b>Monitor fitness of crews for assignments</b></li> </ul>
	Poor Communications	<ul style="list-style-type: none"> <li>• Establish effective radio repeaters to reach all divisions. Confirm radio frequencies</li> <li>• Warn ground forces of possible gaps in the repeater frequencies; advise to contact air tactical if necessary</li> </ul>
ALL	Snags	<ul style="list-style-type: none"> <li>• Stay alert for strong winds, steep slopes, bug-kill, air operations and shallow rooted trees.</li> <li>• Scout, identify and flag hazards, fell dangerous trees near the fire line.</li> <li>• Do go/no go assessment prior to falling. Post lookouts assess trees in work area, issue warnings.</li> </ul>
	Inadequate Crews (Type I crews)	<ul style="list-style-type: none"> <li>• Consider disengagement if air tanker and/or helicopter support resources are lost</li> <li>• Do go/no go assessment for ground operations. Retreat if the situation is too complex</li> <li>• Evaluate suppression strategy, providing for fire fighter safety first</li> </ul>
ALL	Inversion	<ul style="list-style-type: none"> <li>• Limited air operations; Increased fire activity when inversion lifts.</li> </ul>
ALL	Wildland-Urban	<ul style="list-style-type: none"> <li>• Cooperate with the local Sheriff's office in conducting appropriate information exchange with local communities. Determine accessibility and need for traffic controls. Remove natural fuels within 30 feet of structures. Evacuate local citizens, livestock, pets, etc. Identify power-lines, poles, etc Assess available water supplies. Identify and make aware of propane and above ground fuel tanks</li> </ul>





<b>MEDICAL PLAN</b>	1. Incident Name	2. Date Prepared	3. Time Prepared	4. Operational Period				
	Pine Creek	7/17/2013	1500	7/18/13 0630-2030				
<b>Incident Medical Aid Station</b>								
Medical Aid Stations		Location			Paramedics			
					Yes	No		
		<b>Contact Division Supervisor</b>						
<b>B. Incident Ambulances</b>								
<b>NAME</b>	<b>TELEPHONE</b>	<b>LOCATION</b>	<b>PARAMEDICS</b>					
			<b>YES</b>		<b>NO</b>			
Idaho City Ambulance	911	Idaho City						
Basin Health Clinic 243 Hwy 21	392-4544	Idaho City	Nurse Practitioner					
Life Flight	911	Boise	YES					
Clear Creek Ambulance	Radio	On fire			X			
<b>NAME</b>	<b>ADDRESS AND LATITUDE AND LONGITUDE</b>	<b>TRAVEL TIME ( MIN)</b>		<b>PHONE</b>	<b>HELIPAD</b>		<b>BURN CENTER</b>	
		<b>AIR</b>	<b>GROUND</b>		<b>YES</b>	<b>NO</b>	<b>YES</b>	<b>NO</b>
St. Al's 1055 N. Curtis Road	43.36.46 116.11.27	13 min	45 min	386-2344 Or Call Dispatch	X			X
St. Luke's 190 E Bannock Street	43.36.48 116.16.19	12 min	1 hour	367-3221 Or Call Dispatch	X			X
University of Utah Medical Center	50 North Medical Drive Salt Lake City, Utah 40°46.34 N x 111°50.24	1Hr. 25 min	4Hr. 30 min	Front Desk 801-581-2121 ER Desk 801-581-2292 Freq 123.25	X		X	
Morris Creek Family Medicine (Clinic)	2607 Highway 21 Boise, ID		25 min.	208-344-3562		X		X
<b>8. Medical Emergency Procedures</b>								
<p><b>All engines &amp; crews identify EMT qualified personnel, and carry first aid kits on the line. If a serious medical emergency/accident occurs, notify supervisor, &amp; DIVS, &amp; request the nearest EMT. DIVS will take scene control. Notify communications of a medical emergency on command net. Communications will clear all other radio traffic, notify medical unit and safety. Advise communications of nature and extent of injuries, exact location, &amp; nearest drop point or helispot. DIVS or EMT will advise communications of equipment needs. MEDL will coordinate evacuation. If air evacuation is needed, advise immediately of landing area, latitude/longitude and patient weight. DO NOT GIVE OUT NAMES OVER RADIO.</b></p>								
9. Prepared by <b>Deb Lopez</b>				10. Reviewed by (Safety Officer)				

# COMMUNICATION FOR INJURY/MEDICAL EMERGENCY

Do not use the name of the Injured individual over the radio. In the event of a minor injury, so state when relaying the information so a false sense of urgency is not. The Medical Unit Leader is to be notified in all injury situations.

Date: \_\_\_\_\_ Time: \_\_\_\_\_ Division \_\_\_\_\_

Location: \_\_\_\_\_

On Scene Point of Contact (Name & Position): \_\_\_\_\_ Radio Frequency \_\_\_\_\_

Medical personnel on site (name) \_\_\_\_\_

Type of Injury: \_\_\_\_\_

Sex \_\_\_\_\_ Age \_\_\_\_\_

Medical Injury \_\_\_\_\_ or Illness \_\_\_\_\_ Life Threatening Yes \_\_\_\_\_ No \_\_\_\_\_

Patient Condition- Critical \_\_\_\_\_ Serious \_\_\_\_\_ Minor \_\_\_\_\_ Conscious Yes \_\_\_\_\_ No \_\_\_\_\_

Additional medical equipment or personnel needed? (Type and Quantity) \_\_\_\_\_

Is air transportation needed: Yes \_\_\_\_\_ No \_\_\_\_\_ Can Patient sit up Yes \_\_\_\_\_ No \_\_\_\_\_ Weight \_\_\_\_\_

Location LAT \_\_\_\_\_ LONG \_\_\_\_\_ Drop Point \_\_\_\_\_

Patient Home Unit \_\_\_\_\_ Agency \_\_\_\_\_

Assessment BP \_\_\_\_\_ Pulse \_\_\_\_\_ Level of Consciousness \_\_\_\_\_ Skin \_\_\_\_\_

Difficulty Breathing Yes \_\_\_\_\_ No \_\_\_\_\_

On going Assessment- Document as they occur – on Scene personnel,

## **Accident Incident within an Incident**

The **Incident Commander** is responsible for overall action in case of a serious accident.

Upon occurrence of a “**MAJOR**” accident involving significant injury or fatality on the fireline, the highest qualified person on scene shall take control of the situation until the nearest **Division Supervisor** arrives on scene to assume control. Immediate and clear communication must be established between Operations and Division/Group Supervisors to determine who can arrive at the scene quickest and gain control of the situation. In the event of such an accident in camp or on incident roads on-site personnel shall take control until an **Operations Chief or Division Supervisor** arrive or **Local Law Enforcement** and or **Medical personnel** have assumed control.

The **Incident Dispatcher or Responsible Operations Individual** in charge of the accident will take immediate action to clear all radio traffic on the incident “Command Channel” by broadcasting **"Emergency Traffic Only"**, so that quick and proper coordination for handling the accident can take place.

Upon arrival at the accident scene, whoever has been designated to manage the situation (Ops or DIVS) should take immediate actions to:

- Obtain and facilitate EMT's to the scene – notify them you are in charge.
- Co-ordinate and facilitate appropriate transportation for injured.
- Move all unnecessary personnel from the accident scene.
- Secure the scene area and identify witnesses for investigation.

The **Safety Officer** will respond immediately to the scene of the accident to assist the Operations Chief or Division/Group Supervisor and shall be responsible for initiating the proper investigation and documentation by qualified personnel.

Immediately upon notification of an accident requiring emergency action the **Medical Unit Leader and Incident Commander** shall respond to incident communications.

**Plans Chief, Logistics Chief, Finance Chief** and **Information Officer** shall be notified and respond to incident communications in an appropriate manner that will not significantly affect ongoing operations.

The **Logistics Chief** shall attempt to control external communication, phones and radio. All information released from the incident shall be through the incident Information Officer with the approval of the Incident Commander.

The **Plans Chief** will make contact with the Agency Administrator who will in turn contact appropriate officials of the agency. If the accident involves a fatality, the Agency Administrator will contact the Sheriff's Office, the Coroner's Office, and the employing agency of the victim and will find out who will contact family members. The Plans Chief will assure that an individual is assigned to document all communications regarding the accident.

At no time during the accident/fatality evacuation process will the name of the victim(s) be used.

The need of a *Critical Incident Stress Debriefing* for incident personnel will be discussed by the Core Team with input from the Medical Unit Leader, the Human Resource Specialist, and local / involved individuals. The Incident Commander will approve such debriefings.

**Approved by:**

\_\_\_\_\_  
**Incident Commander**

\_\_\_\_\_  
**Date**

## KIDD'S MANAGEMENT TEAM SUPPLY ORDER

Date & Time Order was Placed	Order # (DIVS + #)	Location & Time for Delivery (Division/LZ/DP/Lat Long)	Mode of delivery (Driven/Helo/DIVS to Pick up)	
Order received in Communications by (name):			Time:	
Order received in Supply by (name):			Time:	
Order received in Transportation by (name):			Time:	
Order received in Helibase by (name):			Time:	
Order shipped to line unit by (name): (Send this sheet to the line with the order)			Time:	
#	Item	Amount	Item	Amount
1.	Meals Breakfasts		26. Swivel ea.	
2.	Meals Lunches		27. Leadline ea.	
3.	Meals Dinners		28. Backpack Pump ea.	
4.	Meals MRE's/case		29. Slingable Blivet ea.	
5.	Water 5 gal. cubies		30. Folding Tank Size/ea.	
6.	Gatorade Case		31. Pumpkin Size/ea.	
7.	Batteries AA 1-Flat		32. Hose 1 <sup>1/2</sup> " / ft.	
8.	Batteries Specify Type		33. Hose 1" / ft.	
9.	Flagging (Specify type) # Roll		34. Hose 3/4" / ft.	
10.	Sleeping Bags ea		35. Reducer 1 <sup>1/2</sup> "X1"	
11.	Tarps/Plastic ea./roll		36. Reducer 1"X 3/4"	
12.	Parachute Cord roll		37. Gated "Y" 1 <sup>1/2</sup> "	
13.	Garbage Bags Box		38. Gated "Y" 1"	
14.	20 Man First Aid Kit ea.		39. Gated "Y" 3/4"	
15.	Coffee Kit w/propane ea.		40. Shut-off Valve 3/4"	
16.	Gas Raw		41. In-line Tee 1 <sup>1/2</sup> "X1"	
17.	Bar Oil Gal.		42. Nozzle 1 <sup>1/2</sup> "	
18.	2- cycle oil QT's		43. Nozzle 1"	
19.	Tool Shovel ea.		44. Nozzle 3/4"	
20.	Tool Pulaski ea.		45. Chainsaw Kit ea.	
21.	Tool Combi ea.		46. Mark 3 Pump Kit-Cache w/10 gal raw gas and 2 qts 2 cycle oil ea.	
22.	Tool Specify Type ea.			
23.	Fusee Case			
24.	Drip Torches Full ea.		47. Lightweight Pump Kit-Cache w/5 gal raw gas and 1 qt 2 cycle oil ea.	
25.	Drip Torch Mix 5 Gal.		48. Division Hose Lay Kit ea.	
			49. Sprinkler Kit (may vary by GACC) ea.	

**GPS Datum: NAD 83****Team Ordering/ Timeline Process:**

0600 – Morning Briefing, start of crew time.

1100 – Last call to change spike camp resource (food, fuel, etc) location.

1500 – DIVS to have next day’s resource order ready for OPS.

- All crew level orders will be placed through DIVS.
- DIVS will place all orders through Communications Unit.
- All orders will be tracked using the process found on the front of form.

Division Hose Lay Kit Components			Sprinkler Kit (may vary by GACC)		
Item	NFES#	Quantity	Item	NFES#	Quantity
Hose 1½”	1239	1000’	Sprinkler Assembly ½”	0999	4
Hose 1”	1238	1000’	Hose, ¾” (50’)	1016	5
Hose, ¾”	1016	500’	Reducers, 1 ½” – 1”	0010	1
Tee, 1 ½” – 1”	0731	5	Reducers, 1” – ¾”	0733	4
Nozzle, 1 ½”	0137	2	Inline Tee, 1”x1”x¾”	0731	4
Nozzle, 1”	0138	6	¾” Gated “Y”	0272	2
Nozzle, ¾”	0136	12	Nozzle, ¾”	0136	1
1 ½” Gated “Y”	0231	5	Nozzle, 1 ½”	0137	1
1” Gated “Y”	2059	5	Misc hardware and supplies		
¾” Gated “Y”	0272	6			
Shut off valve ¾”	0738	4			
Reducers, 1 ½” – 1”	0010	5			
Reducers, 1” – ¾”	0733	5			
Double Female 1”	0710	1			
Double Female 1 ½”	0857	1			

## ***Resource Advisor Message***

## ***Pine Creek Fire***

**July 18, 2013**



- **Retardant**
  - Report misapplications to the READ.
  
- **Riparian Areas.**
  - Minimize tree felling within 100 feet of any stream. If a larger operation is necessary, contact a Resource Advisor.
  
- **Minimize conflicts with wildlife**
  - Pack out all your garbage and uneaten food to reduce conflicts with wildlife.
  
- **Water drafting site**
  - Minimize bank disturbance.
  - Have fuel containment on all fuel containers.
  - Do not create rock dams that block fish migration.
  
- **Noxious weeds**
  - Avoid parking in noxious weed patches to the extent possible.

### **Resource Advisors**

Herb Roerick

John Wallace

Casey Watson

KIDD'S Incident Management Team Cell Phone List

<i>Position</i>	<i>Name</i>	<i>Cell</i>
<b>Command &amp; General:</b>		
ICT2	John Kidd	208-869-5979
SOFR	Kraig Carroll	208-313-7816
SOF2	Steve Davis	208-313-7835
PIO2	Jesse Bender	208-940-0642
PIO2	Barbara Bassler	
OSC2	Tracy Swenson	435-740-0572
SOFR	Buz VanSike	208-329-9332
AOBD	Cameron Dingman	801-550-9857
FSC2	Wendy Soper	435-590-4728
LSC2	Varian Allen	435-749-7164
PSC2	Evan Boshell	435-691-9331
<b>Operations:</b>		
DIVS	Brian Keating	435-259-9691
DIVS	Clint Coates	435-691-7272
DIVS	Pete Goetzinger	435-691-7271
DIVS	Matt Call	801-824-3707
DIVS	Jason Kirks	435-259-9635
HEB1	Andy Guest	208-315-5224
ASGS	Blake Ford	435-979-0452
ATGS	Mike Melton	435-590-4712
<b>Planning:</b>		
RESL	Clark Tucker	435-823-6044
SITL	Renee Flanagan	801-368-5107
FBAN	Joel Gosswiller	208-709-2403
DMOB	Keri Vest	208-830-2129
CTSP	Heidi Little	801-618-5240
SCKN	Cherie Ausgotharp	801-554-3072
GIST	Sarah Peterson	208-830-3104
<b>Logistics:</b>		
COMT	Steve Robertson	435-979-7176
SPUL	Larry Garahana	801-824-1519
FACL	Clay Stewart	435-689-0807
GSUL	Art Partridge	435-979-4322
EQPM	Justin Peterson	435-616-8390
EPQM	Kevin Draper	435-558-0220
FUDL	Kevin Cassidy	775-721-1575
BCMG	James Hinricks	385-208-0422
BCMG	Larry Bolen	208-634-9355
ORDM	Nan Coates	435-691-1218
SECM	Veldon Burgess	541-280-2632
MEDL	Matthew Payne	435-770-3391
MEDL	Deb Lopez	435-406-1210
<b>Finance:</b>		
TIME	Gloria McCabe	801-608-5941
COMP	Sally Kuhlberg	208-941-4009
COST	David Burley	208-484-9784
<b>Trainees</b>		
OSC2	Chris Delaney	801-597-9392
ICT2	Chris Wilcox	208-861-8120
DIVS	Ross Wise	702-556-9695
SCKN	Lindsey Neiwert	208-871-1843
RESL	Gary Peck	801-560-8105
SITL	Annie Benoit	208-995-4896
PSC2	Linda Chappell	435-979-8356
SOFR	Fred Johnson	435-851-1546

<b>UNIT LOG</b>	1. Incident Name	2. Date Prepared	3. Time Prepared
4. Unit Name/Designators	5. Unit Leader (Name and Position)		6. Operational Period

7. Personnel Roster Assigned

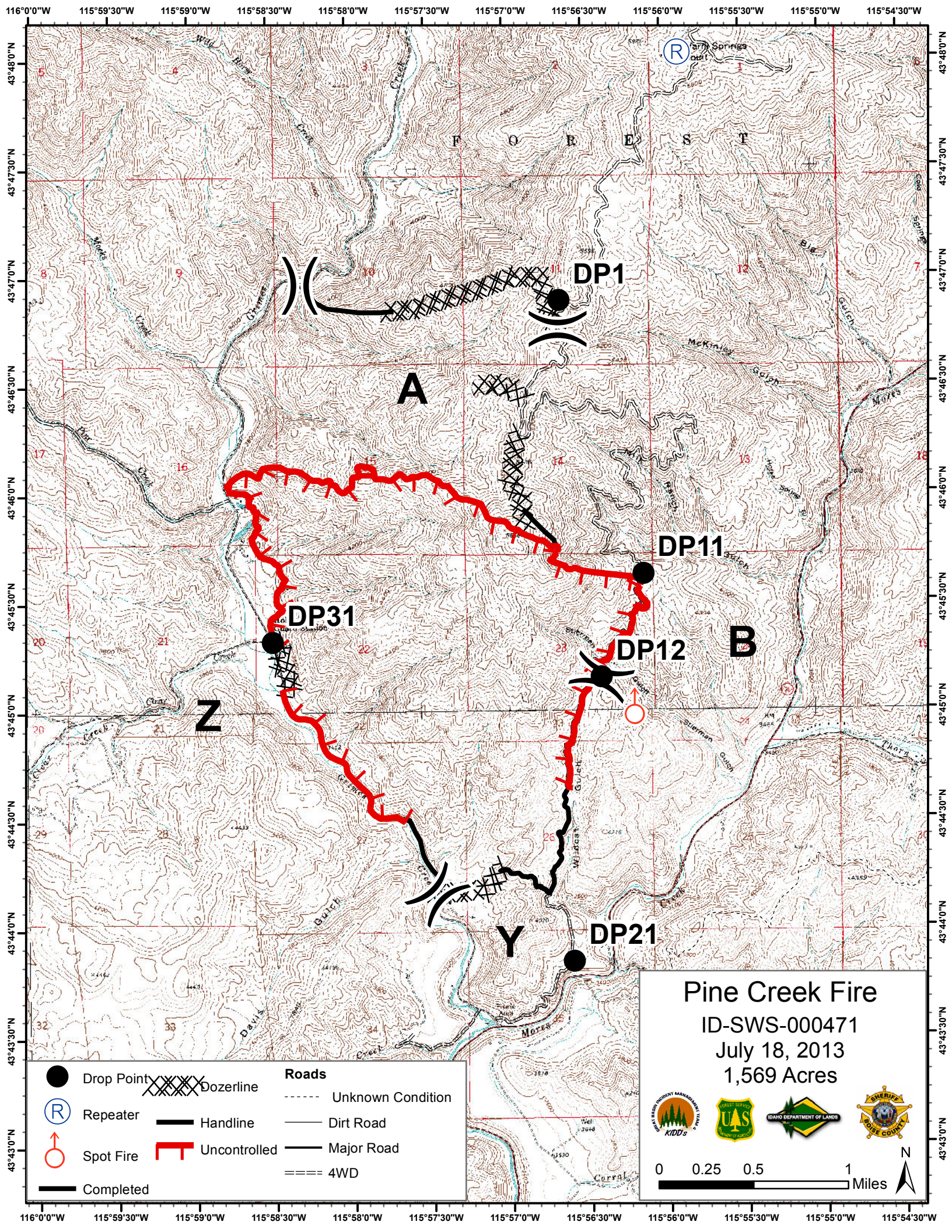
Name	ICS Position	Home Base

8. Activity Log

Time	Major Events

9. Prepared by (Name and Position)





	Drop Point		Dozerline	<b>Roads</b>	
	Repeater		Handline		Unknown Condition
	Spot Fire		Uncontrolled		Dirt Road
	Completed				Major Road
					4WD

**Pine Creek Fire**  
 ID-SWS-000471  
 July 18, 2013  
 1,569 Acres

0 0.25 0.5 1 Miles