

PINE CREEK FIRE



FRIDAY, JULY 19, 2013

DAY: 0630-2030

PNHQ01

(1502)

ID-SWS-000471

GPS: NAD 83 - FORMAT: DD MM. MM

<p style="text-align: center;">Incident Objectives</p>	<p>1. Incident Name PINE CREEK</p>	<p>2. Date Prepared 07/18/13</p>	<p>3. Time Prepared 0925</p>															
<p>4. Operational Period 07/19/13 Friday DAY Shift 0630 - 2030</p>																		
<p>5. General Control Objectives for the incident (include alternatives)</p> <p>GOALS:</p> <ol style="list-style-type: none"> 1. PROVIDE FOR PUBLIC AND FIREFIGHTER SAFETY. 2. UTILIZE BOISE COUNTY RURAL FIRE DISTRICT PERSONNEL FOR PROTECTION OF ADJACENT LANDS IN THE HIGHWAY 21, GRIMES CREEK AND CLEAR CREEK AREAS. 3. PROVIDE CURRENT INFORMATION TO THE ADJACENT PUBLIC. <p>OBJECTIVES:</p> <ol style="list-style-type: none"> 1. KEEP THE PINE CREEK FIRE EAST OF THE GRIMES CREEK ROAD. 2. KEEP THE PINE CREEK FIRE WEST OF WILDCAT GULCH (FR 311). 3. KEEP THE PINE CREEK FIRE NORTH OF ADJACENT PUBLIC LAND IN THE CLEAR CREEK AREA. 4. KEEP THE PINE CREEK FIRE SOUTH OF WARM SPRINGS POINT. 5. PROVIDE FOR STRUCTURE PROTECION ALONG THE GRIMES CREEK ROAD AND THE HIGHWAY 21 CORRIDOR. 																		
<p>6. Weather Forecast for Period</p> <p>SEE ATTACHED WEATHER FORECAST</p>																		
<p>7. General Safety Message</p> <p>SEE ATTACHED SAFETY MESSAGE</p>																		
<p>8. Attachments (mark if attached)</p>																		
<table border="0" style="width: 100%;"> <tr> <td><input checked="" type="checkbox"/> Organization List - ICS 203</td> <td><input checked="" type="checkbox"/> Incident Map</td> <td><input type="checkbox"/></td> </tr> <tr> <td><input checked="" type="checkbox"/> Div. Assignment Lists - ICS 204</td> <td><input checked="" type="checkbox"/> Safety Message</td> <td><input type="checkbox"/></td> </tr> <tr> <td><input checked="" type="checkbox"/> Communications Plan - ICS205</td> <td><input type="checkbox"/> Traffic Plan</td> <td><input type="checkbox"/></td> </tr> <tr> <td><input checked="" type="checkbox"/> Medical Plan - ICS 206</td> <td><input type="checkbox"/></td> <td><input type="checkbox"/></td> </tr> <tr> <td><input checked="" type="checkbox"/> Air Operations Summary - ICS 220</td> <td><input type="checkbox"/></td> <td><input type="checkbox"/></td> </tr> </table>				<input checked="" type="checkbox"/> Organization List - ICS 203	<input checked="" type="checkbox"/> Incident Map	<input type="checkbox"/>	<input checked="" type="checkbox"/> Div. Assignment Lists - ICS 204	<input checked="" type="checkbox"/> Safety Message	<input type="checkbox"/>	<input checked="" type="checkbox"/> Communications Plan - ICS205	<input type="checkbox"/> Traffic Plan	<input type="checkbox"/>	<input checked="" type="checkbox"/> Medical Plan - ICS 206	<input type="checkbox"/>	<input type="checkbox"/>	<input checked="" type="checkbox"/> Air Operations Summary - ICS 220	<input type="checkbox"/>	<input type="checkbox"/>
<input checked="" type="checkbox"/> Organization List - ICS 203	<input checked="" type="checkbox"/> Incident Map	<input type="checkbox"/>																
<input checked="" type="checkbox"/> Div. Assignment Lists - ICS 204	<input checked="" type="checkbox"/> Safety Message	<input type="checkbox"/>																
<input checked="" type="checkbox"/> Communications Plan - ICS205	<input type="checkbox"/> Traffic Plan	<input type="checkbox"/>																
<input checked="" type="checkbox"/> Medical Plan - ICS 206	<input type="checkbox"/>	<input type="checkbox"/>																
<input checked="" type="checkbox"/> Air Operations Summary - ICS 220	<input type="checkbox"/>	<input type="checkbox"/>																
<p>9. Prepared by (Planning Section Chief) EVAN BOSHELL</p>	<p>10. Approved by (Incident Commander) JOHN KIDD</p>																	

ORGANIZATION ASSIGNMENT LIST	
1. Incident Name PINE CREEK FIRE	
2. Date Prepared July 18, 2013	3. Time 1700
4. Operational Period JULY 19, 2012 0630-2030	
Position	Name
5. Incident Commander	
Incident Commanders	John Kidd
Incident Commander (T)	Chris Wilcox
Safety Officers	Steve Davis Kraig Carrol
Information Officer	Jesse Bender Barbara Bassler
6. Agency Representative	
Agency	Name
Forest Service - Supervisor	Cecelia Seesholtz
Forest Service - DFR/Agency Rep	Brant Petersen
Resource Advisor	Herbert Roerick
Resource Advisor	John Wallace
IDL	Ken Humik
Boise County Sheriff	Ben Roeber
7. Planning Section	
Chief	Evan Boshell
Resources Unit	Clark Tucker Gary Peck(T)
Documentation Unit	Clark Tucker
Demob Unit	Keri Vest
Situation Unit	Renee Flanagan Anne Benoit (T)
FBAN	Joel Gosswiller
IMET	Chuck Redman
Training Specialist	Lynn Cook
GIS Specialist	Sarah Peterson
Computer Specialist	Heidi Little
Status/Check-in	Cherie Ausgotharp Lindsey Neiwert (T)
8. Logistics Section	
Chief	Brent Crosland
Supply Unit	Nan Coates
Facilities Unit	Clay Stewart
Ground Support Unit	Art Partridge
Communications Unit	Steve Robertson
Medical Unit	Deb Lopez Matt Payne (T)
Ordering Mgr	Kimberly Soper
Receiving Mgr	Sean Stewart
Security Mgr	Veldon Burgess
Food Unit	Kevin Cassidy
9. Operations Section	
Field Operations	Tracy Swenson
Planning Operations	Buz VanSkiike Chris Delaney (T)
a. Branch I	
Branch Director	
Division/Group	Div A Jason Kirks Ross Wise (T)
Division/Group	Div B Matt Call
Division/Group	Div Y Clint Coates
Division/Group	Div Z Brian Keating
Division/Group	Structure Rob Smolczynski Josh Erickson (T)
Group	Security Rico Burgess
Division/Group	
b. Branch II	
Branch Director	
Division/Group	
c. Branch III	
Branch Director	
Division/Group	
d. Air Operations Branch	
Air Operations Branch Director	Cameron Dingman
Air Tactical Group Supervisor	Mike Melton
Air Tactical Group Supervisor	
Air Support Group Supervisor	Blake Ford
HEB1	Andy Guest Mark Oetzman (T)
HEB2	
10. Finance Section	
Chief	Wendy Soper
Time Unit	Gloria McCabe Karen Bertram(T)
PTRC	Linda Young Lisa Gorman(T)
EQTR	Shawn Atkinson (T)
Cost Unit	Dave Burley Sharon Ringsven (T)
Compensation/Claims Unit	Sally Kuhlberg
Procurement Unit Leader	
Prepared by Resource Unit Leader	
CLARK TUCKER	

Division Assignment List		1. Branch		2. Division/Group			
3. Incident Name PINE CREEK		4. Operational Period 07/19/13 Friday DAY Shift 0630 - 2030					
5. Operations Personnel							
Operations Chief (LINE)	TRACY SWENSON		Division/Group Supervisor	JASON KIRKS/ROSS WISE (T)			
Operations Chief (PLANS)	BUZ VANSKIKE/CHRIS DELANEY (T)		Air Attack Supervisor	MIKE MELTON			
Branch Director			Safety Officer	STEVE DAVIS			
6. Resources Assigned this Period							
Strike Team/Task Force/ Resource Designator	Leader	Num of Pers.	Trans. Y/N	Drop Off PT./Time	Pick Up PT./Time		
(C-7) CRW CHIF MOUNTAIN IHC (7/20)	ST. GODDARD	20	N	FIRE 0630	SPIKE 2030		
(C-8) CRW LOGAN IHC (7/29)	PLATT	20	N	FIRE 0500	SPIKE 2030		
(C-12) CRW BOISE IHC (7/30)	BERNER	22	N	FIRE 0500	SPIKE 2030		
(C-39) CRW SICI T2 (7/29)	SAVER	22	N	FIRE 0630	SPIKE 2030		
(C-14) CRW SAWTELL (7/30)	BARNEY	22	N	FIRE 0630	SPIKE 2030		
(E-3) ENG BOF 421 T4 (7/28)	KNEE	4	N	FIRE 0500	SPIKE 2030		
(E-42) WT G&G #26 (7/31)	WHIPPLE	1	N	FIRE 0630	SPIKE 2030		
(E-43) WT HEATSEEKERS #5 (7/31)	HILDERBRAND	1	N	FIRE 0630	SPIKE 2030		
(O-36) TFLD (7/30)	ZACH	1	N	FIRE 0630	SPIKE 2030		
(O-37) TFLD (7/30)	CLIEZE	1	N	FIRE 0630	SPIKE 2030		
(O-44) AEMF	MCMILLIN	1	N	FIRE 0630	SPIKE 2030		
(O-33) EMPF (7/30)	LANDON	1	N	FIRE 0630	SPIKE 2030		
(O-16.4) SOFR (7/30)	CARROLL	1	N	FIRE 0630	SPIKE 2030		
(O-16.54) BCMG (7/30)	HINRICKS	1	N	FIRE 0630	SPIKE 2030		
7. Control Operations BURNOUT AND HOLD FROM A/B BREAK TO THE A/Z BREAK							
8. Special Instructions							
9. Division/Group Communications Summary							
Function	Frequency - RX	Frequency - TX	Tone	System	Channel	System	Channel
Command	168.700	170.975	TxRx 110.9	NIFC	8		
Tactical Div/Group	168.050	168.050	RxTx 110.9	NIFC	1		
Logistics	168.3500	168.3500		NIFC	11		
Air to Ground	166.6750	166.6750		NIFC	10		
Prepared by (Resource Unit Leader) TUCKER/PECK			Approved by (Planning Section Chief) EVAN BOSHELL		Date Prepared 07/18/13	Time Prepared 0925	

Division Assignment List		1. Branch		2. Division/Group B			
3. Incident Name PINE CREEK		4. Operational Period 07/19/13 Friday DAY Shift 0630 - 2030					
5. Operations Personnel							
Operations Chief (LINE)		TRACY SWENSON		Division/Group Supervisor		MATT CALL	
Operations Chief (PLANS)		BUZ VANSKIKE/CHRIS DELANEY (T)		Air Attack Supervisor		MIKE MELTON	
Branch Director				Safety Officer		STEVE DAVIS	
6. Resources Assigned this Period							
Strike Team/Task Force/ Resource Designator		Leader		Num of Pers.	Trans. Y/N	Drop Off PT./Time	Pick Up PT./Time
(C-10) CRW PATRICK 13A (7/28)		KEMP		20	N	FIRE 0630	CAMP 2030
(C-5) CRW IDAHO CITY IHC (7/29)		CARDOZA		20	N	FIRE 0630	SPIKE 2030
(C-4) CRW SAWTOOTH IHC (7/31)		KRUPSKI		20	N	FIRE 0630	SPIKE 2030
(C-9) CRW PATRICK 13B (7/28)		TEEL		20	N	FIRE 0630	CAMP 2030
ENG IDL 17 T6 (7/28)		RAYBORN		3	N	FIRE 0630	SPIKE 2030
(E-6) NOE DOZER				1	N	FIRE 0630	CAMP 2030
(E-38) ENG HEATSEEKERS #10		RUDOLPH		3	N	FIRE 0630	CAMP 2030
(E-41) ENG HEATSEEKERS #18		M. JOHNSON		3	N	FIRE 0630	CAMP 2030
(O-5) TFLD (7/28)		BLACK		1	N	FIRE 0630	SPIKE 2030
(C-4.3) TFLD(T) (7/31)		ADDEY		1	N	FIRE 0630	SPIKE 2030
(O-14) HEQB (7/30)		HUMBACH		1	N	FIRE 0630	SPIKE 2030
(O-16.4) SOFR (7/30)		CARROLL		1	N	FIRE 0630	CAMP 2030
(O-29) AEMF (7/30)		HARDY		1	N	FIRE 0630	CAMP 2030
7. Control Operations							
BURNOUT AND HOLD FROM THE B/Y BREAK TO THE B/A BREAK. BEGIN MOP-UP							
8. Special Instructions							
9. Division/Group Communications Summary							
Function	Frequency - RX	Frequency - TX	Tone	System	Channel	System	Channel
Command	168.700	170.975	TxRx 110.9	NIFC	8		
Tactical Div/Group	168.200	168.200	RxTx 110.9	NIFC	2		
Logistics	168.3500	168.3500		NIFC	11		
Air to Ground	166.6750	166.6750		NIFC	10		
Prepared by (Resource Unit Leader) TUCKER/PECK			Approved by (Planning Section Chief) EVAN BOSHELL		Date Prepared 07/18/13		Time Prepared 0925

Division Assignment List		1. Branch		2. Division/Group Z			
3. Incident Name PINE CREEK		4. Operational Period 07/19/13 Friday DAY Shift 0630 - 2030					
5. Operations Personnel							
Operations Chief	TRACY SWENSON		Division/Group Supervisor	BRIAN KEATING/ERICKSON(T)			
Operations Chief	BUZ VANSKIKE/CHRIS DELANEY (T)		Air Attack Supervisor	MIKE MELTON			
Branch Director			Safety Officer	STEVE DAVIS			
6. Resources Assigned this Period							
Strike Team/Task Force/ Resource Designator		Leader	Num of Pers.	Trans. Y/N	Drop Off PT./Time	Pick Up PT./Time	
(C-3) CRW BOF #3 (7/28)		CLACK	20	N	FIRE 0630	CAMP 2030	
(E-8) S/T - ENGINE - T4 - IDAHO BLM					FIRE 0630	CAMP 2030	
(E-8.7) STEN (7/29)		MOREAU	1	N	FIRE 0630	CAMP 2030	
(E-8.5) ENG 2416 (7/29)		WEST	4	N	FIRE 0630	CAMP 2030	
(E-8.6) ENG 2405 (7/29)		STAUFFER	4	N	FIRE 0630	CAMP 2030	
(E-8.4) ENG 3441 (7/29)		HOFFIAN	5	N	FIRE 0630	CAMP 2030	
(E-8.2) ENG 1434 (7/29)		BUTLER	4	N	SWING 1000	SWING 0200 (7/20)	
(E-8.3) ENG 1436 (7/29)		HALL	4	N	SWING 1000	SWING 0200 (7/20)	
(O-30) AEMF (7/30)		CRITTENDEN	1	N	FIRE 0630	CAMP 2030	
(O-6) SOFL (7/29)		SHOEMAKER	1	N	FIRE 0630	CAMP 2030	
7. Control Operations BURNOUT AND HOLD FROM Z/A BREAK TOWARDS DP 31							
8. Special Instructions ENGINE 1434 AND ENGINE 1436 WILL BE ON A SWING SHIFT FROM 1000 HRS UNTIL 0200 HRS 7/20 COORDINATE WITH SECURITY TO ENSURE ROAD GUARDS ARE IN PLACE ON GRIMES CREEK PRIOR TO BURNOUT OPERATIONS							
9. Division/Group Communications Summary							
Function	Frequency - RX	Frequency - TX	Tone	System	Channel	System	Channel
Command	168.700	170.975	TxRx 110.9	NIFC	8		
Tactical Div/Group	164.1375	164.1375	RxTx 110.9	NIFC	4		
Logistics	168.3500	168.3500		NIFC	11		
Air to Ground	168.3500	168.3500		NIFC	11		
Prepared by (Resource Unit Leader) TUCKER/PECK		Approved by (Planning Section Chief) EVAN BOSHELL		Date Prepared 07/18/13		Time Prepared 0924	

AIR OPERATIONS SUMMARY		Incident Name/Operational Period: Pine Creek 7-19-2013		Sunrise: 0618 Sunset: 2121		Aviation Bases: Idaho City Helibase Boise Ramp			
4. Personnel and Communications	Phone Number	Air/Air Frequency	Air/Ground Frequency	5. Remarks (Spec. Instructions, Safety Notes, Hazards, Priorities)					
Air Operations Branch Director Cameron Dingman	801-550-9857 Cell 208-392-9928 ICP	TFR/FW 124.225	166.675 Primary	<p>All orders for aircraft tactical missions should be ordered through Air Attack or communications to helibase.</p> <p>IC or Operations must approve all non-tactical missions prior to scheduling. Keep clear of all drop zones.</p> <p>All orders for supplies need to go through Communications/ Supply and orders delivered to helibase.</p> <p>Keep communications short and to the point, use your signal mirrors to guide in aircraft.</p> <p>Medical emergencies need to go through Divisions to Communications/Medical Unit.</p> <p>Watch for POWERLINES in the fire area and at the dipsites.</p> <p>Be aware of the public at the dipsites</p> <p>Ensure FTA limits are followed.</p> <p>Camp briefing @0600. Pilots on a staggered starting at 0730.</p> <p>All Aircraft need to ensure GPS Units are set to <u>NAD 83</u> and <u>DD MM.MM</u></p> <p><u>Retardant</u> is available in Boise....Request through Air Attack.</p>					
Air Tactical Goup Supervisor Mike Melton	435-590-4712	RW 135.725	168.0125 Secondary						
Air Support Group Supervisor Blake Ford	435-979-0452		167.1750 TOLC						
Helibase Manager Andy Guest	208-315-5224		State F2 Medivac Helo's 155.280 TX Tone 156.7						
Helibase Manager Trainee Mark Oetzmann									
6. Location/Function	7. Assignment	8. Fixed Wing		9. Helicopters		10. Time		11. Aircraft Assigned	12. Operating Base
		No.	Type	No.	Type	Available	Commence		
All Divisions	Air Tactical	3	1			0800	0830	N532SA AC-500 N6619V AC-500 N690FD AC-690	Boise
All Divisions	Bucket Support			2	1	0800 +	0830	N793HT CH-54 N526MW Kamax	Idaho City
All Divisions	Bucket Support			3	2	0800 +	0830 +	N932CH B-205++ N80NH Bell UH1H N935CH B-212HP	Idaho City Idaho City
All Divisions	Recon Medivac			2	3	0700 +	0730 +	N722LM N407PA	Idaho City
13. Totals		3		7					
14. Air Operations Support Equipment: None				15. Prepared by (include Date and Time) Cameron Dingman 7-19-2013 1800					

Helicopter Missions

Type 1 Helicopter_Bucket support as requested.

Type 2 Helicopters-Bucket support, sling missions, crew shuttle as requested.

Type 3 Helicopters-Operations section recon in AM and,PM, bucket work, and medivac as requested.

TFR Information

3/4962 43 45 50N 115 56 57W 5 mile radius Surface to 9000 **Frequency 124.225**

Notam 07/113 Idaho City Airport Closure

Dipsite Information

Name	Latitude	Longitude	DIV Location	Elevation
West Grimes Creek	43 45.145	115 58.583	Div Z	3600 MSL
Highway 21 dip	43 46.888	115 53.750		3500
Moore Dip	43 46.536	115 54.187		

Helispot/Medivac Site Information

H#	Latitude	Longitude	Elevation	IGE/OGE	
Helibase	43 49.392	115 50.776	3900	IGE	
St Al's Medivac	43 45.287	115 58.824	3520	OGE	T2
A/B 1 Medivac	43 46.850	115 56.469	5320	OGE	T2

Medivac Information

In the event a medevac is necessary, the Division Supervisor will notify Incident Communications Unit of the incident. The Division Supervisor and on scene medical personnel will determine if the incident is a **Medivac** or **Medical Transport**. The Medical Unit will notify Boise Dispatch if Life Flight will be used. In either case, the helibase may need to respond with a helicopter if it is deemed to be the appropriate resource to transport the patient. Depending on the severity of injury, the incident helicopter will transport the patient to either the helibase or a local hospital. An EMT from the Medical Unit will be stationed at the helibase as one becomes available

Local Hospital information is located in the IAP and the local Crash Rescue/Evacuation Plan.

Operations Recons

Communications with Operations and Division Supervisors during Recons should be conducted on Division Tactical Channels so as not to interfere with other Tactical Missions on the Incident.

Incident Action Plan Weather Forecast

FORECAST NO: 3
PREDICTION FOR: Day Shift
SHIFT DATE: 07/19/2013
TIME AND DATE
FORECAST ISSUED: 2000 07/18/2013

NAME OF FIRE: Pine Creek Fire
UNIT: Idaho Dept of Lands
SIGNED: Chuck Redman
Incident Meteorologist

*****Continued hot and dry with Haines 5 conditions through Saturday*****

An upper ridge will remain over Nevada through Friday before shifting further westward Saturday. Light winds aloft and a continued weak pressure gradient will once again bring terrain driven winds to the lower elevations and a light northwest wind over the ridges. Sufficient moisture may move around the upper ridge today and Saturday limiting the Haines into the Moderate (5) category...but mostly sunny skies are still expected. Overnight RH recovery is still expected to remain poor to moderate the next few mornings.

Today

WEATHER: Sunny and continued hot.
TEMPERATURES: near 90 over the higher ridges and 95 to 98 lower valleys.
HUMIDITY: Minimum RH around 10%.
WIND (Eye Level) Upslope 1 to 3 mph in the morning becoming upvalley 4 to 6 mph by early afternoon.
Ridgeline winds northwest 5 to 10 mph.

Chance of Wetting Rain: 0 percent.
Lightning Activity: 1. Inversion breaking around 1300 hrs.
Haines Index: 5 (Moderate).

Outlook for Tonight

WEATHER: Clear.
TEMPERATURES: around 50 valley bottom to 60 midslopes and ridges.
HUMIDITY: Max 50 percent valley bottoms to around 40 percent ridges.
WIND (Eye Level): Down drainage 2 to 4 mph by 2000 hours.
Ridges: Northwest around 5 mph.

Chance of Wetting Rain: 0 percent
Lightning Activity Level: 1
Haines Index: 5 (Moderate).

Outlook for Saturday:

WEATHER: Sunny.
TEMPERATURES: upper 80s ridges and mid 90s lower valleys.
HUMIDITY: Minimum RH around 10%.
WIND (Eye Level): Upslope 1 to 3 mph in the morning becoming upvalley 4 to 6 mph by the early afternoon.
Ridgeline winds Northwest around 5 to 10 mph.

Chance of Wetting Rain: 0%
Lightning Activity Level: 1.
Haines Index: 5 (Moderate).

Outlook for Sunday and Monday...Mostly sunny. Highs 85 to 95. Lows 50 to 60. Min RH 8 to 15 percent with overnight recovery to 35 to 50%. Terrain driven winds to 6 mph with ridgeline winds northwest 5 to 10 mph.

	Max Temp	Min Temp	Max RH	Min RH
Town Creek Raws (4500 Ft)	93	51	50%	12%
Bogus Basin (6500 Ft)	79	52	54%	15%
Idaho City	96	44	---	---

FIRE BEHAVIOR FORECAST

FORECAST NUMBER: 3

TYPE OF FIRE: Wildfire

FIRE NAME: Pine Creek

OPERATIONAL PERIOD: 6:00-22:00 July 19, 2013

DATE ISSUED: July 18, 2013

TIME ISSUED: 20:30

UNIT: Idaho Department of Lands, SWIFPD
Boise National Forest, Idaho City R.D.

SIGNED: *Joel Gosswiller*
Joel Gosswiller, FBAN

INPUTS

WEATHER SUMMARY: See Attached Fire Weather Forecast.

FUELS: The fire is primarily burning in open ponderosa pine (Fuel Model 9) with a brush and timber litter understory in drainages and on north and east aspects with needlecast, grass, and light brush on the south and west aspects. There are pockets of Douglas fir on higher elevations on north aspects. There are several brush fields on all aspects near ridgeline. Live fuel moisture in the brush is acting to moderate fire behavior somewhat, but headfire will spread actively through the brush. Watch out for freeze kill in the buckbrush (ceonothus) which will increase fire behavior. Dead fuel moistures are tracking near record lows for this time of year and large diameter fuels are burning down to ash.

OUTPUTS

FIRE BEHAVIOR

GENERAL:

Fire has primarily been spreading as a surface fire in timber litter, grass, and brush with single tree torching and short to mid-range spotting. With weather becoming hotter and drier, single and group tree torching with short crown runs has become more common during the peak of the burn period from 1300-1900.

Northwest transport winds will blow smoke and embers back over the fire area reducing spotting potential, but watch the smoke column for wind shifts as the fuel bed outside of the fire is very receptive and probability of ignition is high.

Fire behavior is staying active late into the night with minimal relative humidity recovery and a thermal belt mid slope. Watch for fire behavior to increase as the inversion lifts around 1300.

Watch for rollout on steep slopes where spots can establish quickly and burn back upslope/up drainage.

Fuel model 9, Fine Dead Fuel moisture 3%, Slope 60-90%, Eye level winds 6-10 mph:

	<u>Head Fire</u>	<u>Backing Fire</u>
Flame Length	5-8 feet	1-2 feet
Rate of Spread	2,000-3,000 feet/hour	200-300 feet/hour

SPECIFIC:

Division A: Fire behavior increased dramatically yesterday as the fire spread into unburned drainages. Expect similar conditions today with group tree torching and short crown runs in the timber and rapid upslope runs on grass/brush slopes. Down drainage winds in the morning with northwest transport winds in the afternoon should be favorable for burnout operations from the ridge to Grimes Creek.

Division B and Y: Watch for any rollout that could cross control lines and run back upslope to the fireline. There is still heat along the line in the north end of Division B. Any torching could cause spotting over the control line.

Division Z: Winds should be parallel to the control line in the bottom of Grimes Creek. Small shifts in the wind can quickly lean the smoke column across the line, so closely monitor the smoke and limit fire intensity during burn operations to minimize spotting risk over the line.

AIR OPERATIONS:

Morning smoke inversions will limit visibility in the valleys.

SAFETY

Watchout Situation 14- Weather is getting hotter and drier!

Incident:
Pine Creek

Date:
July,19,2013

Operational Period:
Day



SAFETY MESSAGE

SAFETY IS OUR FIRST PRIORITY

Fire fighter safety comes first on every fire, every time



SAFETY THOUGHT

Take care of your feet and your feet will take care of you.

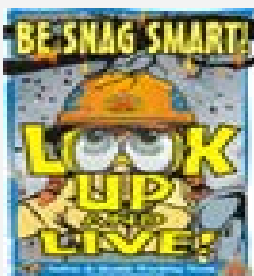
MAJOR HAZARDS AND RISKS

- | | |
|--|--|
| <ul style="list-style-type: none">• Snags—heads up!• Steep slopes, rolling material—watch footing• Spotting and torching--LCES• Lights, Seatbelts, Windshields• Retardant/bucket drops• Personal Hygiene—wash your hands! | <ul style="list-style-type: none">• Dehydration—drink plenty of fluids• Hotter weather trend.• Increased weekend traffic• Traffic US 21• Spike Camp Hazards• Bees and Insect bites |
|--|--|



Fire Fighter Fatigue

- Fatigue management goes beyond counting hours on timesheets, it is individualized and overt.
- Exhaustion of our resources because of fatigue and/or commitment forces us to rely on alternate qualified sources. As we do so, we must be extra vigilant that our standards in production, performance, and safety are not compromised.
- We need to fill the information, familiarity, and experience gap that replacements are likely have regarding the type of fuels and fire behavior we are experiencing.
- Cumulative fatigue is a killer. It prevents sound decision-making, confounds situational awareness, and dulls reaction times. It is as deadly in the office as it is on the fireline.
- Cumulative fatigue is manifest in the explanations used when folks are asked to take a break, or take a day off..."I don't have time." "There is too much going on." "As soon as things calm down a bit."
- Fire fighters **MUST** assure their situational awareness and that risks are assessed and mitigated before committing to an action.
- Our values are simple...firefighter and public safety are our number one concern to be addressed within the priorities of suppression. If we err, let it be on the side that supports well-rested and effective firefighters. If we err, let it be in favor of assuring every firefighter and support personnel goes home safe and sound when all is said and done; and goes home confident that his or her safety was of the utmost concern to those whom he or she served.



What do SNAGS have in COMMON? – Their all DANGEROUS

Spike Camp:

Mitigate know hazards, be aware of bears don't invite unwanted quest.

Weekend Traffic

Be prepared for increased traffic on US 21 and all other travel routes, there will be more folks in and around Idaho City watch for them. Please slow down when entering and leaving Idaho City. **Thank You!**

Line Safety's: Kraig Carroll, Bob Shoemaker

Safety Officer: Steve Davis

DIV	TACTICAL WATCHOUTS	LCES HAZARD CONTROL ** Denotes Common Denominator of Tragedy Fires
A,B,Y A,B,Y A,B,Y A,B,Y ALL ALL ALL	Downhill Fire line Under-slung Fire line Mid-slope Fire line Frontal Assault Unburned Fuel Unanchored Line Light Fuels** Uphill Runs** Indirect Fire line	<ul style="list-style-type: none"> • Staff dedicated lookouts at pre-identified vantage points • Staff aerial lookout. During major threatening activity, assess & provide direction • Establish human repeater site • Take hourly weather observations over command frequency • Abort assignment if communications cannot be maintained • Weather watch system to be developed by FBAN/Meteorologist • Flag, time, improve/construct multiple escape routes and safety zones • Establish situation trigger points for disengagement/exit to safety zones • Improve/construct safety zones prior to tactical operations
ALL	Spotting Torching Crown Runs	<ul style="list-style-type: none"> • Post lookouts ; Watch for smoldering fires picking up over large areas, trees crowning out inside of fire line, high sustained rate of spread, well-developed convection column, hot/dry weather • Grid green areas ; Patrol for spots especially after torching
ALL-----	Crew Fatigue Altitude Sickness	<ul style="list-style-type: none"> • Take rest breaks. Limit work to 2:1 work-rest ratio. Rotate crews out after 14 days. • Check feet, upper respiratory, attitude (complacency) Allow no horseplay.
	Intruder Aircraft	<ul style="list-style-type: none"> • Designate TFR over the air operations area. Report airspace conflicts/ intrusion immediately to Air Support • Curtail air operations, as needed, until airspace is clear
	Air Support Dependent	<ul style="list-style-type: none"> • Staff dedicated lookouts at pre-identified vantage points. • Staff aerial lookout. During major threatening activity, assess & provide direction • Do go/no go assessment for ground operations. Ensure that firefighter safety is not compromised
All----- B-----	Bucket Drops Retardant Drops	<ul style="list-style-type: none"> • Ensure clear air-ground communications, stay clear of flight/drop zones, watch for snags/hazard trees. • Watch out for rotor wash or air tanker turbulence and potentially erratic fire behavior.
	Air Crew Shuttles	<ul style="list-style-type: none"> • Ensure that a Chief of Party is assigned for transport of multiple personnel • Ensure proper wearing of PPE. Follow instructions of Helitack for loading and unloading.
ALL----- ALL----- ALL----- ALL----- ALL-----	RH<25% Temps >85F Direct Sun Dead/Dying Fuels Fuel Loads >10T/Ac Winds>10MPH**	<ul style="list-style-type: none"> • Watch potential for torching, spotting, re-burn, and erratic, extreme fire behavior • Staff dedicated lookouts at pre-identified vantage points • Take hourly weather observations over command frequency • Establish effective radio repeaters to reach all divisions. Confirm radio frequencies • Consider vegetation and terrain and flag and time multiple escape routes • Improve/construct safety zones
ALL ALL	Slopes>50% Rolling Rocks	<ul style="list-style-type: none"> • Identify chimneys, gullies, and/or steep slopes in work area • Post lookouts, issue warnings. Keep crews from below known hazard areas • Improve/construct, flag/time escape routes and safety zones • Identify, flag, avoid rock hazards. Make sure you go slowly and watch your step • Wear proper and good condition fire boots to avoid slips and falls. • Always carry tools on the downhill side. and maintain 10 feet spacing
	Lightning Storms	<ul style="list-style-type: none"> • Watch for sudden reversal of wind direction and increased speed, drop in temperature • Don't use the radio or telephone; turn off generators and electrical equipment. Put down hand tools • Avoid grouping together, sit/crouch, or if in open country stay in vehicle if possible • Avoid standing near high objects, ridge tops, open spaces, ledges, rock outcroppings • Keep away from wire fences; move away from horses and stock
ALL----- ALL-----	Dehydration Heat Stress Altitude >9,000'	<ul style="list-style-type: none"> • Drink plenty of fluids (1 qt/hr); ensure adequate replacement of water supplies • Limit shift lengths. Pace work; allow frequent periods of rest in shade, if possible • Acclimate to extreme heat and/or altitude; schedule hardest work during cooler hours of the day • Monitor fitness of crews for assignments
	Poor Communications	<ul style="list-style-type: none"> • Establish effective radio repeaters to reach all divisions. Confirm radio frequencies • Warn ground forces of possible gaps in the repeater frequencies; advise to contact air tactical if necessary
ALL	Snags	<ul style="list-style-type: none"> • Stay alert for strong winds, steep slopes, bug-kill, air operations and shallow rooted trees. • Scout, identify and flag hazards, fell dangerous trees near the fire line. • Do go/no go assessment prior to falling. Post lookouts assess trees in work area, issue warnings.
	Inadequate Crews (Type I crews)	<ul style="list-style-type: none"> • Consider disengagement if air tanker and/or helicopter support resources are lost • Do go/no go assessment for ground operations. Retreat if the situation is too complex • Evaluate suppression strategy, providing for fire fighter safety first
ALL	Inversion	<ul style="list-style-type: none"> • Limited air operations; Increased fire activity when inversion lifts.
ALL	Wildland-Urban	<ul style="list-style-type: none"> • Cooperate with the local Sheriff's office in conducting appropriate information exchange with local communities. Determine accessibility and need for traffic controls. Remove natural fuels within 30 feet of structures. Evacuate local citizens, livestock, pets, etc. Identify power-lines, poles, etc Assess available water supplies. Identify and make aware of propane and above ground fuel tanks

Incident Radio Communications Plan		1. Incident Name PINE CREEK		2. Operational Period 07/19/13 Friday DAY Shift 0630 - 2030		
3. Basic Radio Channel Utilization						
Radio Type	Channel	Function	Frequency/Tone		Assignment	Remarks
NIFC	1	TAC1	RX 168.050	TX 168.050	DIVISION A	
			RxTx 110.9			
NIFC	2	TAC 2	RX 168.200	TX 168.200	DIVISION B	
			RxTx 110.9			
NIFC	3	TAC 3	RX 168.600	TX 168.600	DIVISION Y	
			RxTx 110.9			
NIFC	4	TAC 4	RX 164.1375	TX 164.1375	DIVISION Z	
			RxTx 110.9			
NIFC	5	TAC5	RX 166.7250	TX 166.7250	UNASSIGNED	
			RxTx 110.9			
NIFC	6	TAC 6	RX 166.7750	TX 166.7750	UNASSIGNED	
			RxTx 110.9			
NIFC	7	TAC 7	RX 154.2950	TX 154.2950	STRUCTURE PROTECTION	
NIFC	8	COMMAND 8	RX 168.700	TX 170.975	COMMAND	FIRE TO ICP
			TxRx 110.9			
NIFC	9					
NIFC	10	AIR TO GROUND	RX 166.6750	TX 166.6750	PRIMARY AIR TO GROUND	
NIFC	11	LOGISTICS/CAMP	RX 168.3500	TX 168.3500	ICP	
NIFC	12	SHAW MTN RPT	RX 172.2000	TX 165.4125		
			Tx 110.9			
NIFC	13	THORN CR RPT	RX 172.2000	TX 165.4125		
			Tx 146.2			
NIFC	14	EMLF	RX 155.2800	TX 155.2800		EMERGENCY MEDICAL AND LIFE FLIGHT
			Tx 156.7			
NIFC	15	AIR TO GROUND	RX 168.0125	TX 168.0125	SECONDARY AIR TO GROUND	
NIFC	16	AIR GUARD	RX 168.6250	TX 168.6250		EMERGENCY ONLY
4. Prepared by (Communications Unit) STEVE ROBERTSON					5. Date Prepared 07/18/13	6. Time Prepared 0924

MEDICAL PLAN	1. Incident Name	2. Date Prepared	3. Time Prepared	4. Operational Period				
	Pine Creek	7/18/2013	1500	7/19/13 0630-2030				
Incident Medical Aid Station								
Medical Aid Stations		Location			Paramedics			
					Yes	No		
ICP		ICP			X			
SPIKE		SPIKE			X			
B. Incident Ambulances								
NAME	TELEPHONE	LOCATION	PARAMEDICS					
			YES		NO			
Idaho City Ambulance	911	Idaho City						
Life Flight	911	Boise	YES					
Clear Creek Ambulance	Radio	On fire			X			
NAME	ADDRESS AND LATITUDE AND LONGITUDE	TRAVEL TIME (MIN)		PHONE	HELIPAD		BURN CENTER	
		AIR	GROUND		YES	NO	YES	NO
St. Al's 1055 N. Curtis Road	43.36.46 116.11.27	13 min	45 min	386-2344 Or Call Dispatch	X			X
St. Luke's 190 E Bannock Street	43.36.48 116.16.19	12 min	1 hour	367-3221 Or Call Dispatch	X			X
University of Utah Medical Center	50 North Medical Drive Salt Lake City, Utah 40°46.34 N x 111°50.24	1Hr. 25 min	4Hr. 30 min	Front Desk 801-581-2121 ER Desk 801-581-2292 Freq 123.25	X		X	
Morris Creek Family Medicine (Clinic)	2607 Highway 21 Boise, ID		25 min.	208-344-3562		X		X
8. Medical Emergency Procedures								
<p>All engines & crews identify EMT qualified personnel, and carry first aid kits on the line. If a serious medical emergency/accident occurs, notify supervisor, & DIVS, & request the nearest EMT. DIVS will take scene control. Notify communications of a medical emergency on command net. Communications will clear all other radio traffic, notify medical unit and safety. Advise communications of nature and extent of injuries, exact location, & nearest drop point or helispot. DIVS or EMT will advise communications of equipment needs. MEDL will coordinate evacuation. If air evacuation is needed, advise immediately of landing area, latitude/longitude and patient weight. DO NOT GIVE OUT NAMES OVER RADIO.</p>								
9. Prepared by Deb Lopez				10. Reviewed by (Safety Officer)				

COMMUNICATION FOR INJURY/MEDICAL EMERGENCY

Do not use the name of the Injured individual over the radio. In the event of a minor injury, so state when relaying the information so a false sense of urgency is not. The Medical Unit Leader is to be notified in all injury situations.

Date: _____ Time: _____ Division _____

Location: _____

On Scene Point of Contact (Name & Position): _____ Radio Frequency _____

Medical personnel on site (name) _____

Type of Injury: _____

Sex _____ Age _____

Medical Injury _____ or Illness _____ Life Threatening Yes _____ No _____

Patient Condition- Critical _____ Serious _____ Minor _____ Conscious Yes _____ No _____

Additional medical equipment or personnel needed? (Type and Quantity) _____

Is air transportation needed: Yes _____ No _____ Can Patient sit up Yes _____ No _____ Weight _____

Location LAT _____ LONG _____ Drop Point _____

Patient Home Unit _____ Agency _____

Assessment BP _____ Pulse _____ Level of Consciousness _____ Skin _____

Difficulty Breathing Yes _____ No _____

On going Assessment- Document as they occur – on Scene personnel,

Accident Incident within an Incident

The **Incident Commander** is responsible for overall action in case of a serious accident.

Upon occurrence of a “**MAJOR**” accident involving significant injury or fatality on the fireline, the highest qualified person on scene shall take control of the situation until the nearest **Division Supervisor** arrives on scene to assume control. Immediate and clear communication must be established between Operations and Division/Group Supervisors to determine who can arrive at the scene quickest and gain control of the situation. In the event of such an accident in camp or on incident roads on-site personnel shall take control until an **Operations Chief or Division Supervisor** arrive or **Local Law Enforcement** and or **Medical personnel** have assumed control.

The **Incident Dispatcher or Responsible Operations Individual** in charge of the accident will take immediate action to clear all radio traffic on the incident “Command Channel” by broadcasting “**Emergency Traffic Only**”, so that quick and proper coordination for handling the accident can take place.

Upon arrival at the accident scene, whoever has been designated to manage the situation (Ops or DIVS) should take immediate actions to:

- Obtain and facilitate EMT’s to the scene – notify them you are in charge.
- Co-ordinate and facilitate appropriate transportation for injured.
- Move all unnecessary personnel from the accident scene.
- Secure the scene area and identify witnesses for investigation.

The **Safety Officer** will respond immediately to the scene of the accident to assist the Operations Chief or Division/Group Supervisor and shall be responsible for initiating the proper investigation and documentation by qualified personnel.

Immediately upon notification of an accident requiring emergency action the **Medical Unit Leader and Incident Commander** shall respond to incident communications.

Plans Chief, Logistics Chief, Finance Chief and Information Officer shall be notified and respond to incident communications in an appropriate manner that will not significantly affect ongoing operations.

The **Logistics Chief** shall attempt to control external communication, phones and radio. All information released from the incident shall be through the incident Information Officer with the approval of the Incident Commander.

The **Plans Chief** will make contact with the Agency Administrator who will in turn contact appropriate officials of the agency. If the accident involves a fatality, the Agency Administrator will contact the Sheriff’s Office, the Coroner’s Office, and the employing agency of the victim and will find out who will contact family members. The Plans Chief will assure that an individual is assigned to document all communications regarding the accident.

At no time during the accident/fatality evacuation process will the name of the victim(s) be used.

The need of a *Critical Incident Stress Debriefing* for incident personnel will be discussed by the Core Team with input from the Medical Unit Leader, the Human Resource Specialist, and local / involved individuals. The Incident Commander will approve such debriefings.

Approved by:

Incident Commander

Date

Resource Advisor Message

Pine Creek Fire

July 18, 2013



- **Retardant**
 - Report misapplications to the READ.

- **Riparian Areas.**
 - Minimize tree felling within 100 feet of any stream. If a larger operation is necessary, contact a Resource Advisor.

- **Minimize conflicts with wildlife**
 - Pack out all your garbage and uneaten food to reduce conflicts with wildlife.

- **Water drafting site**
 - Minimize bank disturbance.
 - Have fuel containment on all fuel containers.
 - Do not create rock dams that block fish migration.

- **Noxious weeds**
 - Avoid parking in noxious weed patches to the extent possible.

Resource Advisors

Herb Roerick

John Wallace

Casey Watson

TRAINEES!!



DID I GET YOUR ATTENTION??

IF YOU'RE WORKING ON A TASKBOOK (PTB), YOU MUST CHECK IN WITH THE TRAINING SPECIALIST, LYNN COOK, IN ORDER TO GET CREDIT FOR YOUR ACCOMPLISHMENTS! 😊

WHEN YOU MEET WITH LYNN FOR THE FIRST TIME, YOU'LL BE PROVIDED WITH A SMALL PACKET OF PAPERWORK WHICH, ONCE COMPLETED, WILL PROVIDE DOCUMENTATION OF YOUR WORK ON THIS INCIDENT.

WHEN YOUR PAPERWORK IS FINISHED AND RETURNED TO YOUR TRAINING SPECIALIST, YOUR ACHIEVEMENTS WILL BE OFFICIALLY DOCUMENTED AND A LETTER OF RECOMMENDATION WILL BE MAILED TO YOUR HOME UNIT. (YA-HOOOOO)!! HOPE TO SEE YOU SOON ~

Lynn Cook, TRAINING OFFICER

KIDD'S MANAGEMENT TEAM SUPPLY ORDER

Date & Time Order was Placed	Order # (DIVS + #)	Location & Time for Delivery (Division/LZ/DP/Lat Long)	Mode of delivery (Driven/Helo/DIVS to Pick up)	
Order received in Communications by (name):			Time:	
Order received in Supply by (name):			Time:	
Order received in Transportation by (name):			Time:	
Order received in Helibase by (name):			Time:	
Order shipped to line unit by (name): (Send this sheet to the line with the order)			Time:	
#	Item	Amount	Item	Amount
1.	Meals Breakfasts		26. Swivel ea.	
2.	Meals Lunches		27. Leadline ea.	
3.	Meals Dinners		28. Backpack Pump ea.	
4.	Meals MRE's/case		29. Slingable Blivet ea.	
5.	Water 5 gal. cubies		30. Folding Tank Size/ea.	
6.	Gatorade Case		31. Pumpkin Size/ea.	
7.	Batteries AA 1-Flat		32. Hose 1 ^{1/2} " / ft.	
8.	Batteries Specify Type		33. Hose 1" / ft.	
9.	Flagging (Specify type) # Roll		34. Hose 3/4" / ft.	
10.	Sleeping Bags ea		35. Reducer 1 ^{1/2} "X1"	
11.	Tarps/Plastic ea./roll		36. Reducer 1"X 3/4"	
12.	Parachute Cord roll		37. Gated "Y" 1 ^{1/2} "	
13.	Garbage Bags Box		38. Gated "Y" 1"	
14.	20 Man First Aid Kit ea.		39. Gated "Y" 3/4"	
15.	Coffee Kit w/propane ea.		40. Shut-off Valve 3/4"	
16.	Gas Raw		41. In-line Tee 1 ^{1/2} "X1"	
17.	Bar Oil Gal.		42. Nozzle 1 ^{1/2} "	
18.	2- cycle oil QT's		43. Nozzle 1"	
19.	Tool Shovel ea.		44. Nozzle 3/4"	
20.	Tool Pulaski ea.		45. Chainsaw Kit ea.	
21.	Tool Combi ea.		46. Mark 3 Pump Kit-Cache w/10 gal raw gas and 2 qts 2 cycle oil ea.	
22.	Tool Specify Type ea.			
23.	Fusee Case			
24.	Drip Torches Full ea.		47. Lightweight Pump Kit-Cache w/5 gal raw gas and 1 qt 2 cycle oil ea.	
25.	Drip Torch Mix 5 Gal.		48. Division Hose Lay Kit ea.	
			49. Sprinkler Kit (may vary by GACC) ea.	

GPS Datum: NAD 83**Team Ordering/ Timeline Process:**

0600 – Morning Briefing, start of crew time.

1100 – Last call to change spike camp resource (food, fuel, etc) location.

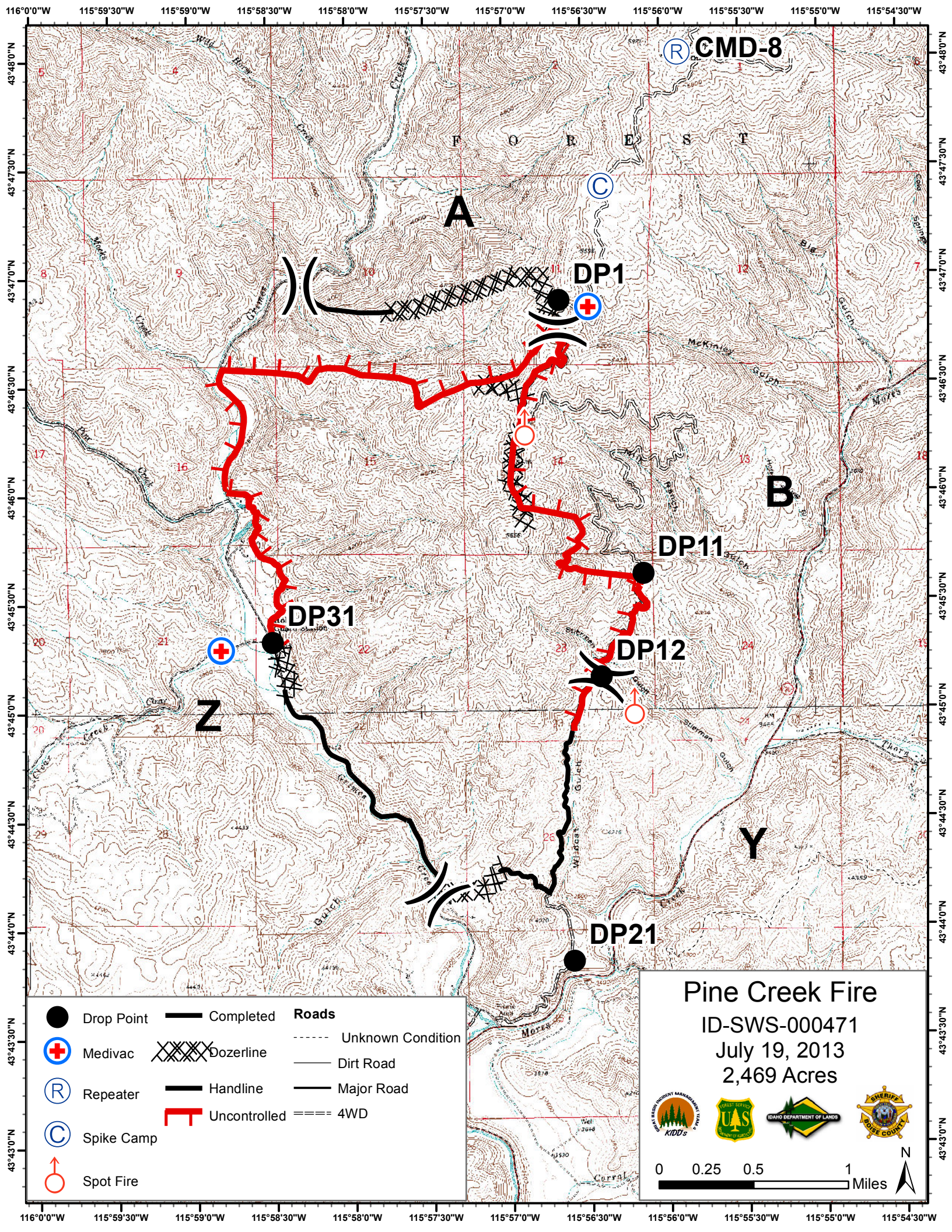
1500 – DIVS to have next day’s resource order ready for OPS.

- All crew level orders will be placed through DIVS.
- DIVS will place all orders through Communications Unit.
- All orders will be tracked using the process found on the front of form.

Division Hose Lay Kit Components			Sprinkler Kit (may vary by GACC)		
Item	NFES#	Quantity	Item	NFES#	Quantity
Hose 1½”	1239	1000’	Sprinkler Assembly ½”	0999	4
Hose 1”	1238	1000’	Hose, ¾” (50’)	1016	5
Hose, ¾”	1016	500’	Reducers, 1 ½” – 1”	0010	1
Tee, 1 ½” – 1”	0731	5	Reducers, 1” – ¾”	0733	4
Nozzle, 1 ½”	0137	2	Inline Tee, 1”x1”x¾”	0731	4
Nozzle, 1”	0138	6	¾” Gated “Y”	0272	2
Nozzle, ¾”	0136	12	Nozzle, ¾”	0136	1
1 ½” Gated “Y”	0231	5	Nozzle, 1 ½”	0137	1
1” Gated “Y”	2059	5	Misc hardware and supplies		
¾” Gated “Y”	0272	6			
Shut off valve ¾”	0738	4			
Reducers, 1 ½” – 1”	0010	5			
Reducers, 1” – ¾”	0733	5			
Double Female 1”	0710	1			
Double Female 1 ½”	0857	1			

KIDD'S Incident Management Team Cell Phone List

<i>Position</i>	<i>Name</i>	<i>Cell</i>
Command & General:		
ICT2	John Kidd	208-869-5979
SOFR	Kraig Carroll	208-313-7816
SOF2	Steve Davis	208-313-7835
PIO2	Jesse Bender	208-940-0642
PIO2	Barbara Bassler	
OSC2	Tracy Swenson	435-740-0572
SOFR	Buz VanSike	208-329-9332
AOBD	Cameron Dingman	801-550-9857
FSC2	Wendy Soper	435-590-4728
LSC2	Varian Allen	435-749-7164
PSC2	Evan Boshell	435-691-9331
Operations:		
DIVS	Brian Keating	435-259-9691
DIVS	Clint Coates	435-691-7272
DIVS	Pete Goetzinger	435-691-7271
DIVS	Matt Call	801-824-3707
DIVS	Jason Kirks	435-259-9635
HEB1	Andy Guest	208-315-5224
ASGS	Blake Ford	435-979-0452
ATGS	Mike Melton	435-590-4712
Planning:		
RESL	Clark Tucker	435-823-6044
SITL	Renee Flanagan	801-368-5107
FBAN	Joel Gosswiller	208-709-2403
DMOB	Keri Vest	208-830-2129
CTSP	Heidi Little	801-618-5240
SCKN	Cherie Ausgotharp	801-554-3072
GIST	Sarah Peterson	208-830-3104
Logistics:		
COMT	Steve Robertson	435-979-7176
SPUL	Larry Garahana	801-824-1519
FACL	Clay Stewart	435-689-0807
GSUL	Art Partridge	435-979-4322
EQPM	Justin Peterson	435-616-8390
EPQM	Kevin Draper	435-558-0220
FUDL	Kevin Cassidy	775-721-1575
BCMG	James Hinricks	385-208-0422
BCMG	Larry Bolen	208-634-9355
ORDM	Nan Coates	435-691-1218
SECM	Veldon Burgess	541-280-2632
MEDL	Matthew Payne	435-770-3391
MEDL	Deb Lopez	435-406-1210
Finance:		
TIME	Gloria McCabe	801-608-5941
COMP	Sally Kuhlberg	208-941-4009
COST	David Burley	208-484-9784
Trainees		
OSC2	Chris Delaney	801-597-9392
ICT2	Chris Wilcox	208-861-8120
DIVS	Ross Wise	702-556-9695
SCKN	Lindsey Neiwert	208-871-1843
RESL	Gary Peck	801-560-8105
SITL	Annie Benoit	208-995-4896
PSC2	Linda Chappell	435-979-8356
SOFR	Fred Johnson	435-851-1546



Ⓡ **CMD-8**

A

DP1

B

DP11

DP31

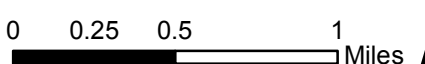
DP12

Z

Y

DP21

Pine Creek Fire
 ID-SWS-000471
 July 19, 2013
 2,469 Acres



- | | | |
|--------------|-----------------|-------------------------|
| ● Drop Point | — Completed | Roads |
| ⊕ Medivac | XXXXX Dozerline | ----- Unknown Condition |
| Ⓡ Repeater | — Handline | — Dirt Road |
| Ⓢ Spike Camp | ┌ Uncontrolled | — Major Road |
| ♂ Spot Fire | ==== 4WD | |