



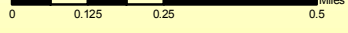
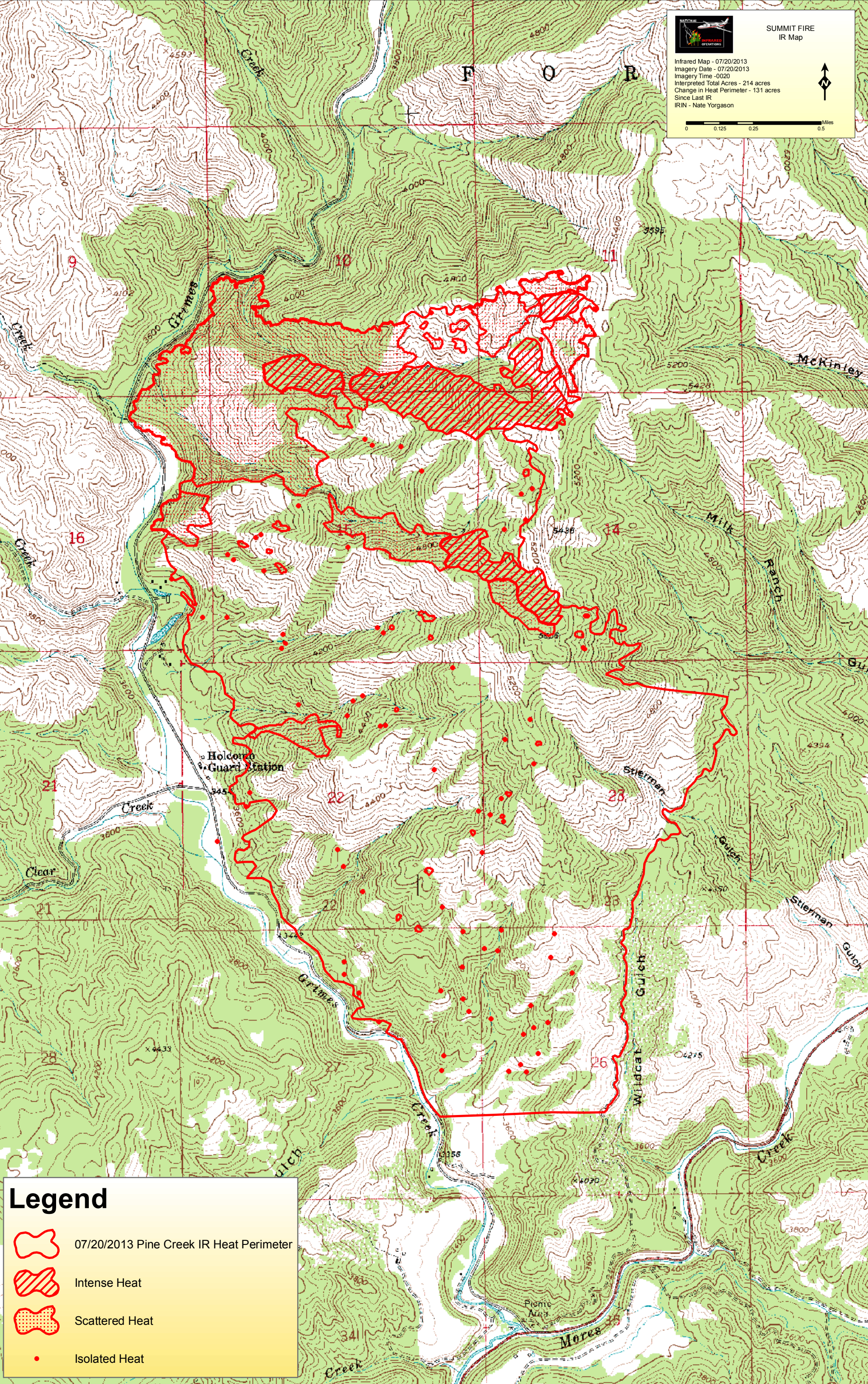
115°59'0"W 115°58'30"W 115°58'0"W 115°57'30"W 115°57'0"W 115°56'30"W 115°56'0"W 115°55'30"W

43°47'30"N
43°47'0"N
43°46'30"N
43°46'0"N
43°45'30"N
43°45'0"N
43°44'30"N
43°44'0"N
43°43'30"N



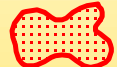

**SUMMIT FIRE
IR Map**



Infrared Map - 07/20/2013
 Imagery Date - 07/20/2013
 Imagery Time - 0020
 Interpreted Total Acres - 214 acres
 Change in Heat Perimeter - 131 acres
 Since Last IR
 IRIN - Nate Yorgason

Legend

-  07/20/2013 Pine Creek IR Heat Perimeter
-  Intense Heat
-  Scattered Heat
-  Isolated Heat

115°59'0"W 115°58'30"W 115°58'0"W 115°57'30"W 115°57'0"W 115°56'30"W 115°56'0"W 115°55'30"W