



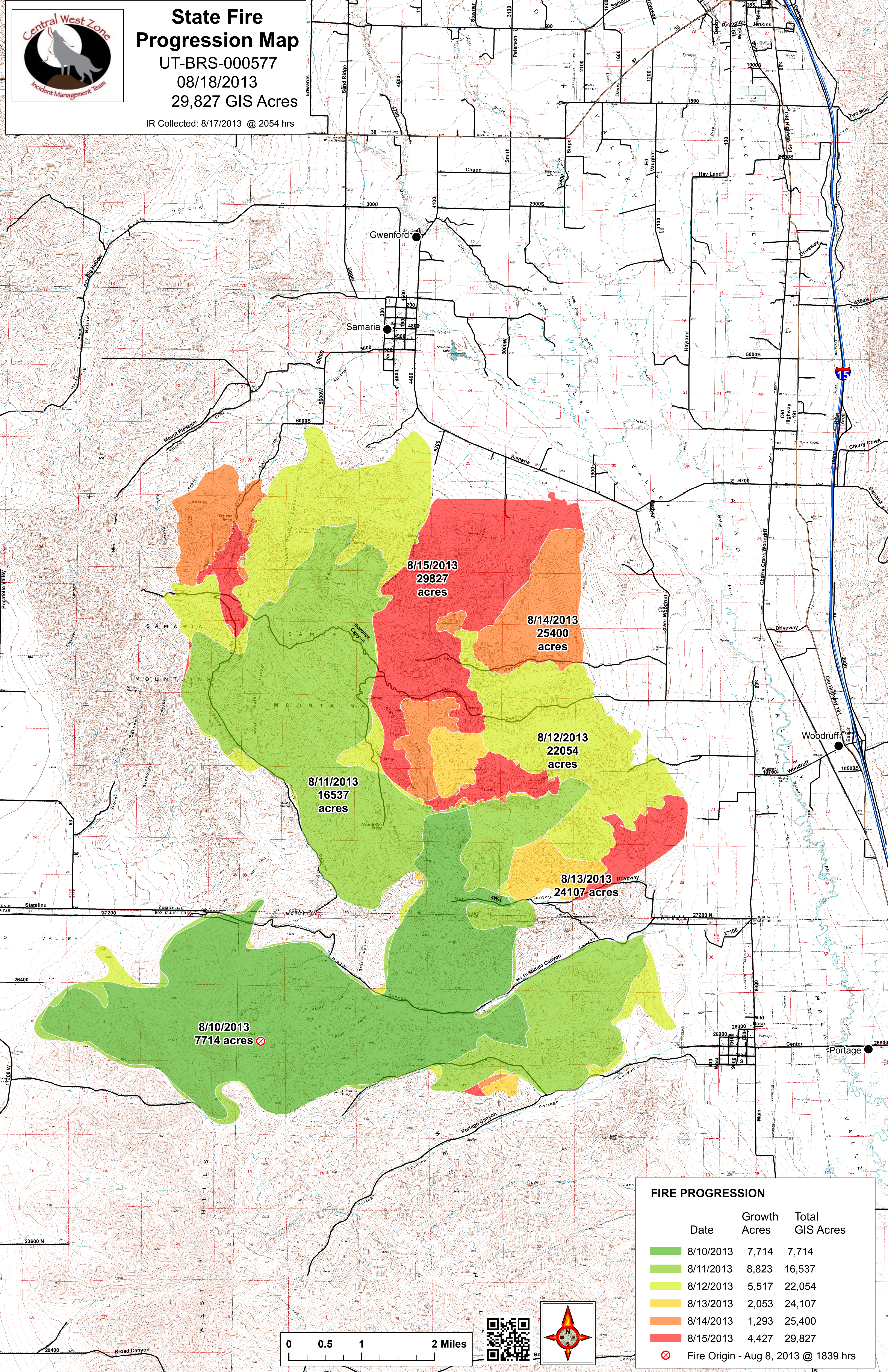
State Fire Progression Map

UT-BRS-000577

08/18/2013

29,827 GIS Acres

IR Collected: 8/17/2013 @ 2054 hrs



8/15/2013
29827
acres








8/14/2013
25400
acres

8/12/2013
22054
acres

8/11/2013
16537
acres

8/13/2013
24107
acres

8/10/2013
7714
acres

FIRE PROGRESSION		
Date	Growth Acres	Total GIS Acres
	8/10/2013	7,714
	8/11/2013	8,823
	8/12/2013	22,054
	8/13/2013	24,107
	8/14/2013	25,400
	8/15/2013	29,827
	Fire Origin - Aug 8, 2013 @ 1839 hrs	

