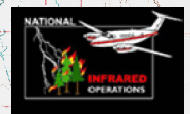


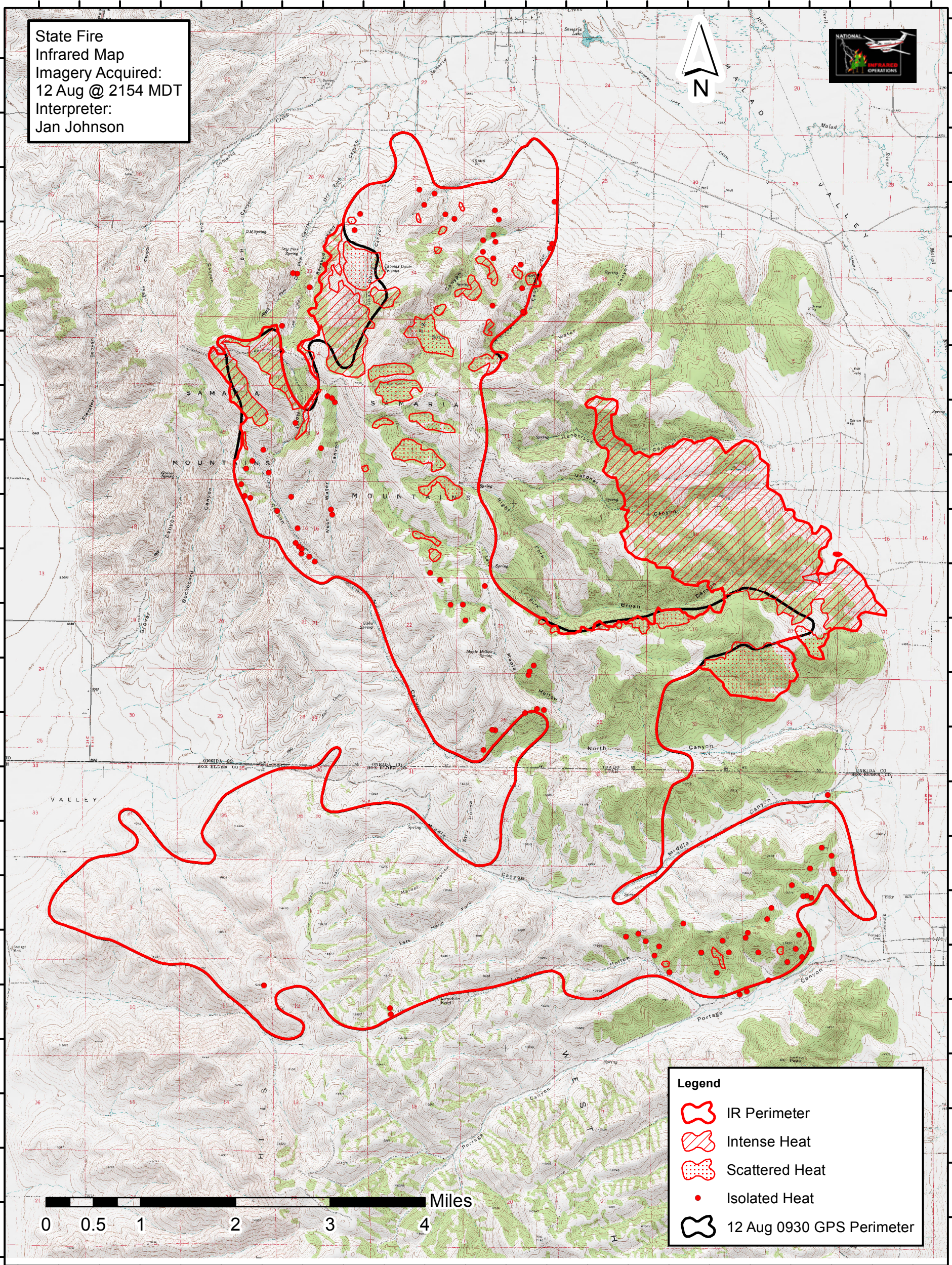
112°26'W 112°25'W 112°24'W 112°23'W 112°22'W 112°21'W 112°20'W 112°19'W 112°18'W 112°17'W 112°16'W 112°15'W

State Fire
Infrared Map
Imagery Acquired:
12 Aug @ 2154 MDT
Interpreter:
Jan Johnson








41°56'N 41°56'30"N 41°57'N 41°57'30"N 41°58'N 41°58'30"N 41°59'N 41°59'30"N 42°0'N 42°0'30"N 42°1'N 42°1'30"N 42°2'N 42°2'30"N 42°3'N 42°3'30"N 42°4'N 42°4'30"N 42°5'N 42°5'30"N 42°6'N 42°6'30"N

41°56'N 41°56'30"N 41°57'N 41°57'30"N 41°58'N 41°58'30"N 41°59'N 41°59'30"N 42°0'N 42°0'30"N 42°1'N 42°1'30"N 42°2'N 42°2'30"N 42°3'N 42°3'30"N 42°4'N 42°4'30"N 42°5'N 42°5'30"N 42°6'N 42°6'30"N



Legend

-  IR Perimeter
-  Intense Heat
-  Scattered Heat
-  Isolated Heat
-  12 Aug 0930 GPS Perimeter

112°26'W 112°25'W 112°24'W 112°23'W 112°22'W 112°21'W 112°20'W 112°19'W 112°18'W 112°17'W 112°16'W 112°15'W