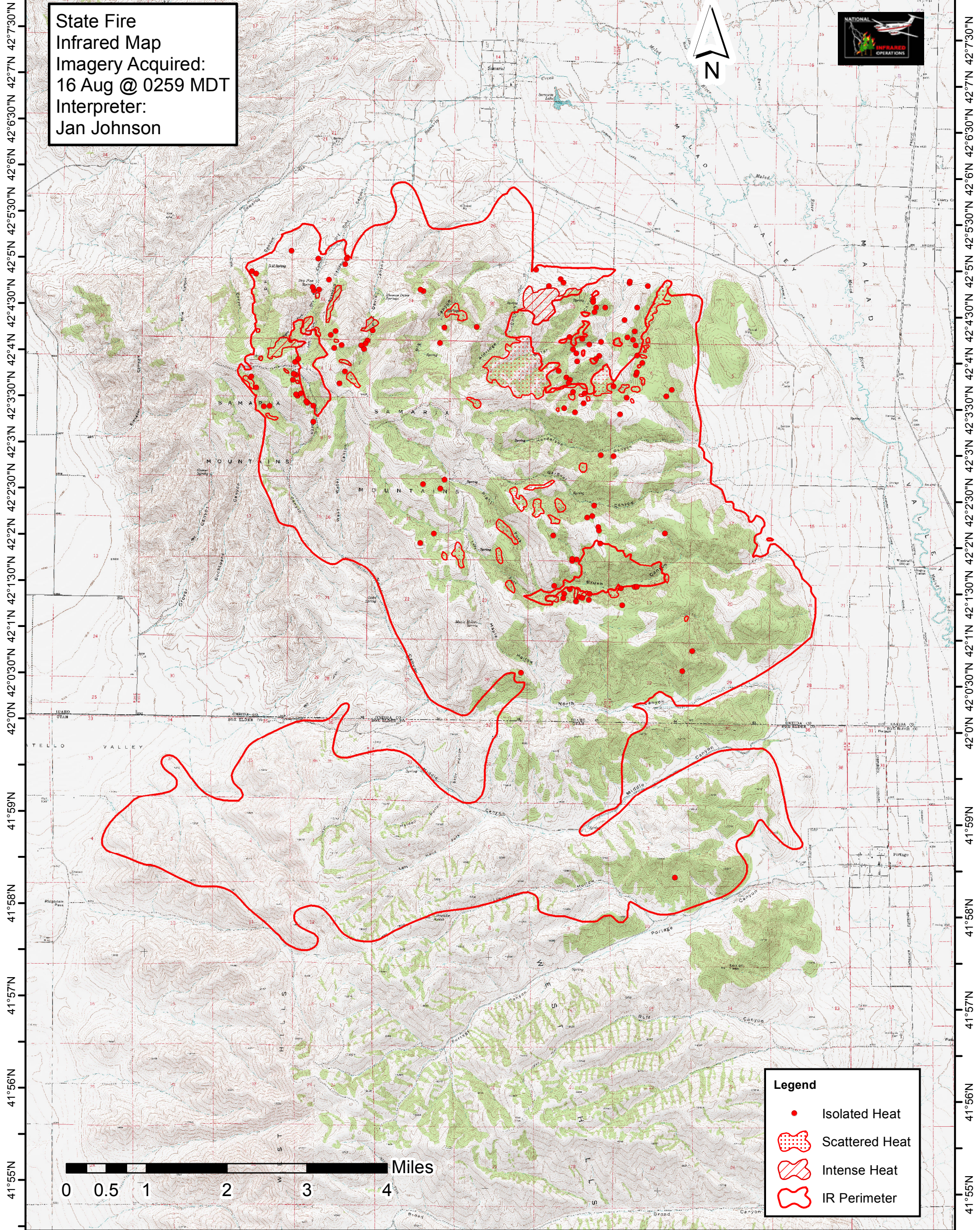
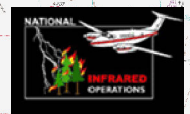


112°26'30"W 112°25'30"W 112°24'30"W 112°23'30"W 112°22'30"W 112°21'30"W 112°20'30"W 112°19'30"W 112°18'30"W 112°17'30"W 112°16'30"W 112°15'30"W 112°14'30"W 112°13'30"W

State Fire
Infrared Map
Imagery Acquired:
16 Aug @ 0259 MDT
Interpreter:
Jan Johnson



Legend

- Isolated Heat
- ▨ Scattered Heat
- ▨ Intense Heat
- ▭ IR Perimeter

112°26'30"W 112°25'30"W 112°24'30"W 112°23'30"W 112°22'30"W 112°21'30"W 112°20'30"W 112°19'30"W 112°18'30"W 112°17'30"W 112°16'30"W 112°15'30"W 112°14'30"W 112°13'30"W