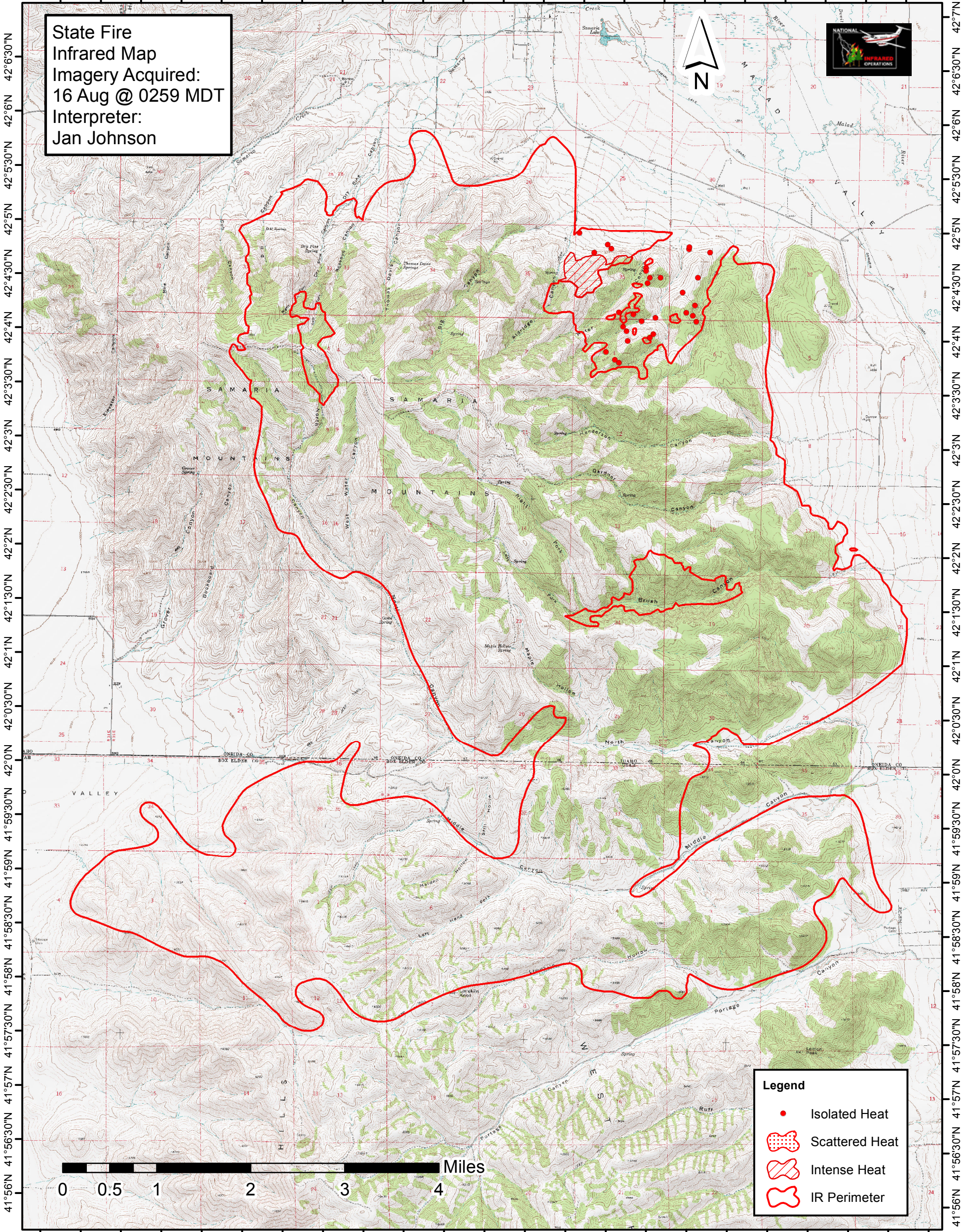


112°25'30"W 112°24'30"W 112°23'30"W 112°22'30"W 112°21'30"W 112°20'30"W 112°19'30"W 112°18'30"W 112°17'30"W 112°16'30"W 112°15'30"W

State Fire
Infrared Map
Imagery Acquired:
16 Aug @ 0259 MDT
Interpreter:
Jan Johnson



0 0.5 1 2 3 4 Miles

Legend

- Isolated Heat
- ▨ Scattered Heat
- ▩ Intense Heat
- ⬭ IR Perimeter

112°25'30"W 112°24'30"W 112°23'30"W 112°22'30"W 112°21'30"W 112°20'30"W 112°19'30"W 112°18'30"W 112°17'30"W 112°16'30"W 112°15'30"W

41°56'30"N 41°56'30"N 41°57'30"N 41°57'30"N 41°58'30"N 41°58'30"N 41°59'30"N 41°59'30"N 42°0'30"N 42°0'30"N 42°1'30"N 42°1'30"N 42°2'30"N 42°2'30"N 42°3'30"N 42°3'30"N 42°4'30"N 42°4'30"N 42°5'30"N 42°5'30"N 42°6'30"N 42°6'30"N 42°7'30"N

41°56'30"N 41°56'30"N 41°57'30"N 41°57'30"N 41°58'30"N 41°58'30"N 41°59'30"N 41°59'30"N 42°0'30"N 42°0'30"N 42°1'30"N 42°1'30"N 42°2'30"N 42°2'30"N 42°3'30"N 42°3'30"N 42°4'30"N 42°4'30"N 42°5'30"N 42°5'30"N 42°6'30"N 42°6'30"N 42°7'30"N