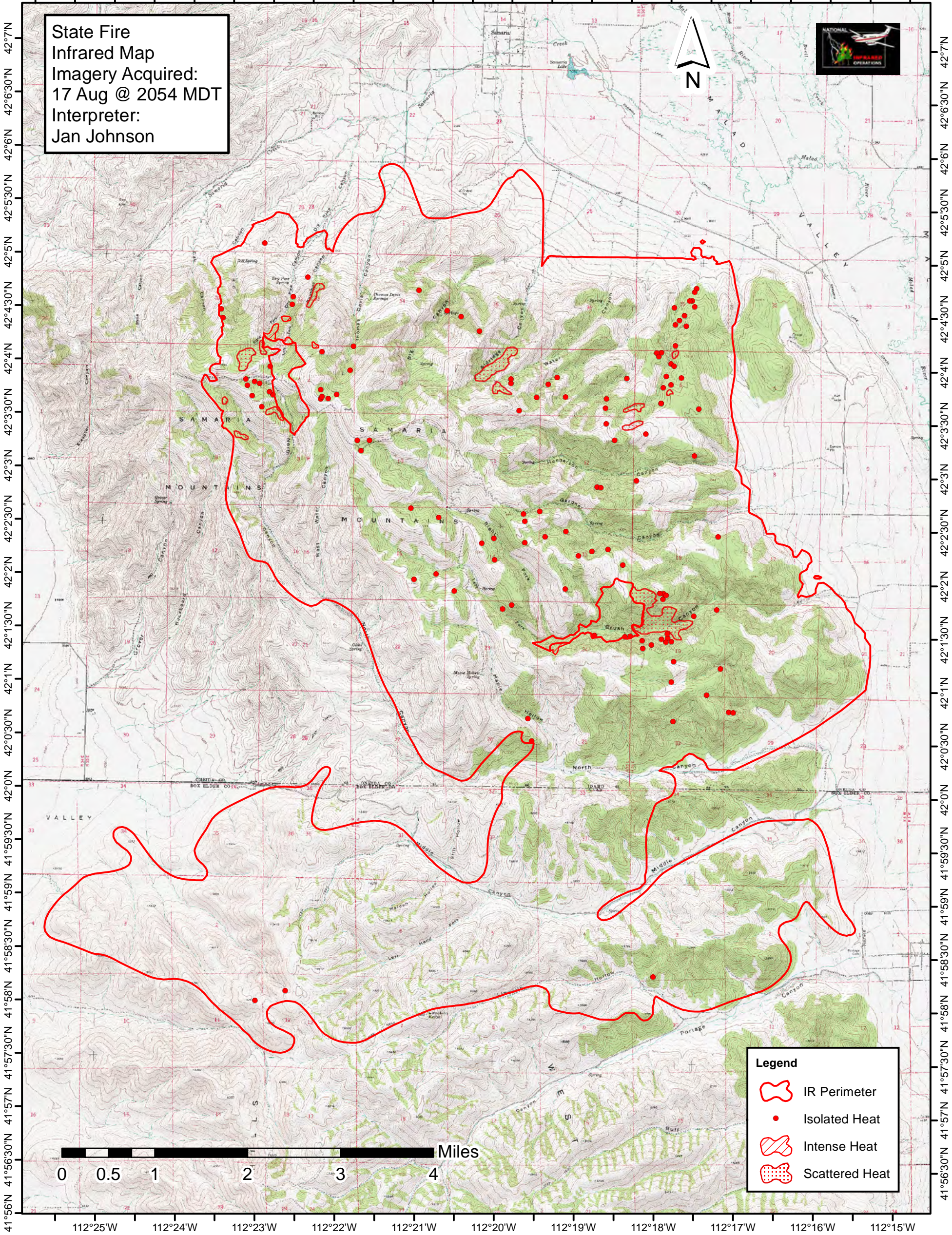
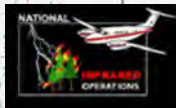






112°26'W 112°25'W 112°24'W 112°23'W 112°22'W 112°21'W 112°20'W 112°19'W 112°18'W 112°17'W 112°16'W 112°15'W

State Fire  
Infrared Map  
Imagery Acquired:  
17 Aug @ 2054 MDT  
Interpreter:  
Jan Johnson



**Legend**

-  IR Perimeter
-  Isolated Heat
-  Intense Heat
-  Scattered Heat

0 0.5 1 2 3 4 Miles

41°56'N 41°56'30"N 41°57'N 41°57'30"N 41°58'N 41°58'30"N 41°59'N 41°59'30"N 42°0'N 42°0'30"N 42°1'N 42°1'30"N 42°2'N 42°2'30"N 42°3'N 42°3'30"N 42°4'N 42°4'30"N 42°5'N 42°5'30"N 42°6'N 42°6'30"N 42°7'N