

**TREND**

**DATA**

**FOR**

**WEST GRASSY MOUNTAIN ALLOTMENT**

ALLOTMENT DATE PLOT	WEST GRASSY 8/12/1969 WG-1		LOCATION T1N R11W SEC. 1		TREND INDEX SUMMARY
	NUMBER	SEEDLINGS	1/16 SQ. FT. UNITS	PERCENT	
List by Species	Mature	Seedlings	Cover	Composition	Composition, Key Species
Grasses (basal cover)					Cover, Live Vegetation
POSE	1		0.0625	0.5	Seedlings, Key Species
ELSA	4		1.625	12	Litter, Plot Total
SIHY	1		0.25	1.8	<b>TOTAL</b>
<b>TOTAL</b>	6	0	1.9375	14.3	79.9
Forbs (basal cover)					13.6
					0
					5
					98.5
<b>TOTAL</b>	0	0	0	0	
Browse (foliage cover)					
ARNO	4		9.125	67	
ATCO	1		0.25	1.8	
ARSP	2		0.625	4.6	
EULA	2		1.5	11	
TESP	1		0.125	0.9	
<b>TOTAL</b>	9	1	11.625	85.3	
LITTER					
<b>PLOT TOTAL</b>	15	1	13.5625	99.6	

ALLOTMENT	WEST GRASSY	LOCATION				
DATE	8/17/1970	T1N R11W SEC. 1				
PLOT	WG-1					
List by Species	NUMBER		1/16 SQ. FT UNITS	PERCENT		TREND INDEX SUMMARY
	Mature	Seedlings		Cover	Composition	
Graasses (basal cover)						Composition, Key Species
POSE	1		T	0	0	Cover, Live Vegetation
ELSA	5		6	1.5	12.5	Seedlings, Key Species
SIHY	1		0.5	0.06	0.5	Litter, Plot Total
						<b>TOTAL</b>
<b>TOTAL</b>	7	0	6.5	1.56	13	94.7
Forbs (basal cover)						11.99
						0
						3.62
						110.31
<b>TOTAL</b>	0	0	0	0	0	
Browse (foliage cover)						
ARNO	4		34.5	8.62	71.8	
ATCO	1		1	0.25	2.1	
ARSP	2		1	0.25	2.1	
EULA	2		5	1.25	10.4	
TESP	1		0.5	0.06	0.5	
<b>TOTAL</b>	10	0	42	10.43	86.9	
LITTER						
<b>PLOT TOTAL</b>	17	0	48.5	11.99	99.9	



ALLOTMENT DATE PLOT	WEST GRASSY 9/2/1981 WG-1		LOCATION T1N R11W SEC. 1		TREND INDEX SUMMARY Composition, Key Species Cover, Live Vegetation Seedlings, Key Species Litter, Plot Total <b>TOTAL</b>
	NUMBER Mature      Seedlings		PERCENT Cover      Composition		
List by Species Grasses (basal cover)			1/16 SQ. FT UNITS		
ELSA	4	1	17	4.25	40.7
SIHY	2		0.5	0.13	1.2
POSE	1		0.2	0.05	0.5
<b>TOTAL</b>	7	1	17.7	4.43	42.4
Forbs (basal cover)					
HAGL		15	T		
<b>TOTAL</b>	0	15	0	0	0
Browse (foliage cover)					
ARNO	3		19	4.75	46
ATCO	1		2	0.5	4.8
EULA	2		2	0.5	4.8
ARSP	1		1	0.25	2.4
<b>TOTAL</b>	7	0	24	6	58
LITTER				1	
<b>PLOT TOTAL</b>	14	16	41.7	11.43	100.4



ALLOTMENT	WEST GRASSY		LOCATION				
DATE	6/15/1983		T1N R11W SEC. 1				
PLOT	WG-1						
List by Species	NUMBER		1/16 SQ. FT UNITS	PERCENT		TREND INDEX SUMMARY	
	Mature	Seedlings		Cover	Composition	Composition, Key Species	Cover, Live Vegetation
Grasses (basal cover)							
ELSA	2		33.3	8.33	35		69
POSE	1		0.7	0.18	0.5		23.75
SIHY	4		3.5	0.88	4		0
BRTE	220		11.1	2.85	12		6.75
<b>TOTAL</b>	<b>227</b>	<b>0</b>	<b>48.6</b>	<b>12.24</b>	<b>51.5</b>		<b>99.5</b>
Forbs (basal cover)							
<b>TOTAL</b>	<b>0</b>	<b>0</b>	<b>0</b>	<b>0</b>	<b>0</b>		
Browse (foliage cover)							
ARTR	3		29.5	7.4	31		
CELA	2		3	0.75	3		
TESP	1		3.5	0.88	4		
ATCO	1		10	2.5	10.5		
<b>TOTAL</b>	<b>7</b>	<b>0</b>	<b>46</b>	<b>11.53</b>	<b>48.5</b>		
LITTER							
<b>PLOT TOTAL</b>	<b>234</b>	<b>0</b>	<b>94.6</b>	<b>30.52</b>	<b>100</b>		

ALLOTMENT	WEST GRASSY		LOCATION		TREND INDEX SUMMARY
	DATE	7/18/1985	T1N R11W SEC. 1		
PLOT	WG-1		1/16 SQ. FT	PERCENT	Composition, Key Species
List by Species	Mature	Seedlings	UNITS	Cover	Cover, Live Vegetation
Grasses (basal cover)					88
ELSA	3		31.25	7.81	19.44
POA	1		0.5	0.13	0
					12.75
					120.19
<b>TOTAL</b>	4	0	31.75	7.94	40.67
Forbs (basal cover)					
FORB	2		0.25	0.06	0.31
<b>TOTAL</b>	2	0	0.25	0.06	0.31
Browse (foliage cover)					
CELA	1		2	0.5	3
ARTR	2		35	8.75	45
ATCO			6.25	1.56	8
TESP	1		2.5	0.62	3
<b>TOTAL</b>	4	0	45.75	11.43	59
LITTER			51	12.75	
<b>PLOT TOTAL</b>	10	0	77.75	32.18	99.98

ALLOTMENT	WEST GRASSY		LOCATION		TREND INDEX SUMMARY	
	DATE	7/24/1989	T1N R11W SEC. 1			
PLOT	WG-1					
List by Species	NUMBER		1/16 SQ. FT. UNITS	PERCENT		Composition, Key Species
	Mature	Seedlings		Cover	Composition	
Grasses (basal cover)						65.75
ELSA	3		41	10.25	36.93	21.125
POSE	1		0.5	0.125	0.45	0
						6.625
						93.5
<b>TOTAL</b>	4	0	41.5	10.375	37.38	
Forbs (basal cover)						
<b>TOTAL</b>	0	0	0	0	0	
Browse (foliage cover)						
ATCO	1		7	1.75	6.3	
ARNO	2		32	8	28.82	
TEGL	1		4	1	3.6	
<b>TOTAL</b>	4	0	43	10.75	38.72	
LITTER						
			26.5	6.625		
<b>PLOT TOTAL</b>	8	0	84.5	27.75	76.1	



ALLOTMENT	WEST GRASSY		LOCATION			
	DATE		T2N R11W SEC. 6			
PLOT	WG-2					
List by Species <i>Grasses (basal cover)</i>	NUMBER		1/16 SQ. FT UNITS	PERCENT		TREND INDEX SUMMARY
	Mature	Seedlings		Cover	Composition	
POSE	3		0.5	0.125	0.7	84.8
ELSA	1		1.5	0.375	2.2	16.8
						0
						0
<b>TOTAL</b>	4	0	2	0.5	2.9	<b>101.6</b>
<i>Forbs (basal cover)</i>						
<b>TOTAL</b>	0	0	0	0	0	
<i>Browse (foliage cover)</i>						
ARNO	4		47.5	11.875	70.7	
EULA	3		8	2	11.9	
ARSP	3		4	1	5.9	
ATCO	1		6	1.5	8.9	
<b>TOTAL</b>	11	0	65.5	16.375	97.4	
<b>LITTER</b>						
<b>PLOT TOTAL</b>	15	0	67.5	16.875	100.3	

ALLOTMENT	WEST GRASSY		LOCATION		TREND INDEX SUMMARY	
	DATE	8/17/1970	T2N R11W SEC. 6			
PLOT	WG-2					
List by Species	NUMBER		1/16 SQ. FT. UNITS	PERCENT		Composition, Key Species
	Mature	Seedlings		Cover	Composition	
Grasses (basal cover)						83.6
POSE	4		1	0.25	1.6	15.25
ELSA	1		1	0.25	1.6	0
						1.5
						100.35
<b>TOTAL</b>	5	0	2	0.5	3.2	
Forbs (basal cover)						
<b>TOTAL</b>	0	0	0	0	0	
Browse (foliage cover)						
ARNO	4		45	11.25	73.8	
EULA	3		5	1.25	8.2	
ARSP	3		4	1	6.8	
ATCO	1		5	1.25	8.2	
<b>TOTAL</b>	11	0	59	14.75	97	
LITTER						
<b>PLOT TOTAL</b>	16	0	61	16.75	100.2	

ALLOTMENT	WEST GRASSY		LOCATION		TREND INDEX SUMMARY	
	DATE	PLOT	1/16 SQ. FT UNITS	PERCENT		
	9/2/1981	WG-2		T2N R11W SEC. 6	Composition, Key Species	89
					Cover, Live Vegetation	13.5
					Seedlings, Key Species	0
					Litter, Plot Total	1
					<b>TOTAL</b>	<b>103.5</b>
<b>TOTAL</b>						
<i>Forbs (basal cover)</i>						
<b>TOTAL</b>						
<i>Browse (foliage cover)</i>						
ARNO	3		38	9.5	70.4	
ATCO	1		4	1	7.5	
EULA	3		4	1	7.5	
ARSP	1		2	0.5	3.7	
<b>TOTAL</b>	8	0	48	12	89.1	
LITTER				1		
<b>PLOT TOTAL</b>	18	2	54	14.5	100.2	







ALLOTMENT	WEST GRASSY		LOCATION				
	DATE		T2N R11W SEC. 6				
PLOT	WG-2						
List by Species <i>Grasses (basal cover)</i>	NUMBER		1/16 SQ. FT UNITS	PERCENT		TREND INDEX SUMMARY	
	Mature	Seedlings		Cover	Composition	Composition, Key Species	Cover, Live Vegetation
POSE	5		0.8	0.2	0.89		63.23
SIHY	5		1.5	0.37	1.65		17.2
ELSA	1		2	0.5	2.23		0
<b>TOTAL</b>	11	0	4.3	1.07	4.77		5.125
<i>Forbs (basal cover)</i>							85.555
<b>TOTAL</b>	0	0	0	0	0		
<i>Browse (foliage cover)</i>							
EULA	3		1.7	0.425	1.9		
ARNO	3		52.8	13.3	59.1		
ATCO	1		10	2.5	11.19		
<b>TOTAL</b>	7	0	64.5	16.225	72.19		
LITTER			20.5	5.125			
<b>PLOT TOTAL</b>	18	0	68.8	22.42	76.96		







ALLOTMENT	WEST GRASSY		LOCATION		TREND INDEX SUMMARY	
	DATE					
	6/16/1983		T2N R11W SEC. 31			
PLOT	WG-3					
List by Species	NUMBER		1/16 SQ. FT. UNITS	PERCENT		Composition, Key Species
	Mature	Seedlings		Cover	Composition	
Grasses (basal cover)						59
BRTE	11		1.1	0.3	1.5	26.4
	1					7
						12.5
						104.9
<b>TOTAL</b>	12	0	1.1	0.3	1.5	
Forbs (basal cover)						
LEPID	2		1.4	0.4	1.5	
HAGL	138		39.5	10	38	
<b>TOTAL</b>	140	0	40.9	10.4	39.5	
Browse (foliage cover)						
ATCO	10	7	50.8	12.7	48	
KOAM	1		12	3	11	
<b>TOTAL</b>	11	7	62.8	15.7	59	
LITTER			50.1	12.5		
<b>PLOT TOTAL</b>	163	7	104.8	38.9	100	



ALLOTMENT DATE PLOT	WEST GRASSY 7/18/1985 WG-3		LOCATION T2N R11W SEC. 31		TREND INDEX SUMMARY Composition, Key Species Cover, Live Vegetation Seedlings, Key Species Litter, Plot Total TOTAL
	NUMBER Mature Seedlings	1/16 SQ. FT. UNITS	PERCENT Cover Composition		
Grasses (basal cover)					80.7
					6.62
					0
					15
					102.32
<b>TOTAL</b>	0	0	0	0	
Forbs (basal cover)					
HAGL	51	5.1	1.28	19.34	
<b>TOTAL</b>	51	5.1	1.28	19.34	
Browse (foliage cover)					
KOAM	2	8.75	2.19	33.08	
ATCO	3	12.6	3.15	47.58	
<b>TOTAL</b>	5	21.35	5.34	80.66	
LITTER					
<b>PLOT TOTAL</b>	56	26.45	21.62	100	

ALLOTMENT DATE PLOT	WEST GRASSY 7/24/1989 WG-3		LOCATION T2N R11W SEC. 31		TREND INDEX SUMMARY Composition, Key Species Cover, Live Vegetation Seedlings, Key Species Litter, Plot Total TOTAL
	NUMBER Mature	NUMBER Seedlings	1/16 SQ. FT. UNITS	PERCENT Cover	
Grasses (basal cover)				Composition	69.26
					8
					8
					3.55
					88.81
<b>TOTAL</b>	0	0	0	0	
Forbs (basal cover)					
<b>TOTAL</b>	0	0	0	0	
Browse (foliage cover)					
KOAM	4	8	12	3	25.97
ATCO	2		20	5	43.29
<b>TOTAL</b>	6	8	32	8	69.26
LITTER			14.2	3.55	
<b>PLOT TOTAL</b>	6	8	32	11.55	69.26

ALLOTMENT DATE PLOT	WEST GRASSY 8/12/1969 WG-4		LOCATION T1N R11W SEC. 6		TREND INDEX SUMMARY Composition, Key Species Cover, Live Vegetation Seedlings, Key Species Litter, Plot Total TOTAL
	NUMBER Mature Seedlings	1/16 SQ. FT. UNITS	PERCENT Cover Composition		
Grasses (basal cover)					100
					25.5
					2
					0
					127.5
<b>TOTAL</b>	0	0	0	0	
Forbs (basal cover)					
<b>TOTAL</b>	0	0	0	0	
Browse (foliage cover)					
ATCO	4	96.5	24.125	94.6	
KOAM	4	5.5	1.375	5.4	
<b>TOTAL</b>	8	102	25.5	100	
LITTER					
<b>PLOT TOTAL</b>	8	102	25.5	100	



ALLOTMENT	WEST GRASSY		LOCATION				
DATE	8/18/1970		T1N R11W SEC. 6				
PLOT	WG-4						
List by Species	NUMBER		1/16 SQ. FT. UNITS		PERCENT		TREND INDEX SUMMARY
	Mature	Seedlings	Cover	Composition	Cover	Composition	
Grasses (basal cover)							100
							21.63
							0
							2.25
							123.88
<b>TOTAL</b>	0	0	0	0	0	0	
Forbs (basal cover)							
<b>TOTAL</b>	0	0	0	0	0	0	
Browse (foliage cover)							
ATCO	6		81	20.25	93.6		
KOAM	5		5.5	1.38	6.4		
<b>TOTAL</b>	11	0	86.5	21.63	100		
LITTER			92.25				
<b>PLOT TOTAL</b>	11	0	86.5	21.63	100		

ALLOTMENT	WEST GRASSY		LOCATION				
	DATE		T1N R11W SEC. 6				
PLOT	WG-4						
List by Species	NUMBER		1/16 SQ. FT UNITS	PERCENT		TREND INDEX SUMMARY	
	Mature	Seedlings		Cover	Composition	Composition, Key Species	43.4
Grasses (basal cover)							
BRTE	2		0.4	0.1	0.2		23.6
							21
							13.3
							101.3
<b>TOTAL</b>	2	0	0.4	0.1	0.2		
Forbs (basal cover)							
LEPID	8		5.5	1.4	6		
HAGL	151		47.4	11.9	50.4		
<b>TOTAL</b>	159	0	52.9	13.3	56.4		
Browse (foliage cover)							
ATCO		20	6.3	1.6	9		
KOAM	5	1	34.5	8.6	36.4		
<b>TOTAL</b>	5	21	40.8	10.2	45.4		
LITTER			53.1	13.3			
<b>PLOT TOTAL</b>	166	21	94.1	36.9	102		

ALLOTMENT	WEST GRASSY		LOCATION		TREND INDEX SUMMARY	
	DATE	7/8/1985	T1N R11W SEC. 6			
PLOT	WG-4					
List by Species Grasses (basal cover)	NUMBER		1/16 SQ. FT. UNITS	PERCENT		Composition, Key Species 74
	Mature	Seedlings		Cover	Composition	
						Cover, Live Vegetation 13.11
						Seedlings, Key Species 2
						Litter, Plot Total 23.94
						<b>TOTAL</b> 113.05
<b>TOTAL</b>	0	0	0	0	0	
Forbs (basal cover)						
HAGL	60		13.85	3.46	26.4	
<b>TOTAL</b>	60	0	13.85	3.46	26.4	
Browse (foliage cover)						
ATCO	7	2	10.85	2.71	21	
KOAM	4		27.75	6.94	53	
<b>TOTAL</b>	11	2	38.6	9.65	74	
LITTER						
<b>PLOT TOTAL</b>	71	2	52.45	37.05	100.4	



ALLOTMENT	WEST GRASSY		LOCATION				
	DATE		T1N R11W SEC. 6				
PLOT	WG-4						
List by Species	NUMBER		1/16 SQ. FT UNITS	PERCENT		TREND INDEX SUMMARY	
	Mature	Seedlings		Cover	Composition		
Grasses (basal cover)						Composition, Key Species	49.99
						Cover, Live Vegetation	14.575
						Seedlings, Key Species	1
						Litter, Plot Total	8.075
						<b>TOTAL</b>	73.64
<b>TOTAL</b>	0	0	0	0	0		
Forbs (basal cover)							
<b>TOTAL</b>	0	0	0	0	0		
Browse (foliage cover)							
KOAM	5		44	11	37.73		
ATCO	5	1	14.3	3.575	12.26		
<b>TOTAL</b>	10	1	58.3	14.575	49.99		
LITTER			32.3	8.075			
<b>PLOT TOTAL</b>	10	1	58.3	22.65	49.99		

ALLOTMENT	WEST GRASSY		LOCATION		TREND INDEX SUMMARY
	DATE	8/12/1969	T1N R10W SEC. 6		
PLOT	WG-5		1/16 SQ. FT. UNITS	PERCENT	
	Mature	Seedlings	Cover	Composition	Composition, Key Species
Grasses (basal cover)					66.3
ORHY	1		3.5	6.4	13.75
					0
					0
					80.05
<b>TOTAL</b>	1	0	3.5	6.4	
Forbs (basal cover)					
<b>TOTAL</b>	0	0	0	0	
Browse (foliage cover)					
ARNO	6		27	6.75	49
EULA	3		9.5	2.375	17.3
ATCO	1		15	3.75	27.3
<b>TOTAL</b>	10	0	51.5	12.875	93.6
LITTER					
<b>PLOT TOTAL</b>	11	0	55	13.75	100





ALLOTMENT	EAST GRASSY		LOCATION		TREND INDEX SUMMARY
	DATE				
	9/2/1981		T1N R10W SEC. 6		
PLOT	WG-5				
<u>List by Species</u>	<u>NUMBER</u>	<u>1/16 SQ. FT</u>	<u>PERCENT</u>		
Grasses (basal cover)	<u>Mature</u>	<u>UNITS</u>	<u>Cover</u>	<u>Composition</u>	
POSE	1	0.1	0.03	0.4	86.3
BRTE	50				7.53
					0
					2
					95.83
<b>TOTAL</b>	51	0.1	0.03	0.4	
Forbs (basal cover)					
<b>TOTAL</b>	0	0	0	0	
Browse (foliage cover)					
EULA	3	9	2.25	29.9	
ARNO	3	17	4.25	56.4	
TEGL	1	4	1	13.3	
<b>TOTAL</b>	7	30	7.5	99.6	
LITTER					
<b>PLOT TOTAL</b>	58	30.1	9.53	100	

ALLOTMENT	EAST GRASSY		LOCATION					
	DATE	7/24/1989	T1N R10W SEC. 6					
	PLOT	WG-5						
List by Species Grasses (basal cover)	NUMBER		1/16 SQ. FT. UNITS	PERCENT		TREND INDEX SUMMARY		
	Mature	Seedlings		Cover	Composition			
B RTE	755		37.8	9.5	37.4	Composition, Key Species	50.8	
PO SE	1		0.5	0.1	0.4	Cover, Live Vegetation	25.4	
						Seedlings, Key Species	0	
						Litter, Plot Total	7.8	
						TOTAL	84	
<b>TOTAL</b>	756	0	38.3	9.6	37.8			
Forbs (basal cover)								
<b>TOTAL</b>	0	0	0	0	0			
Browse (foliage cover)								
TEGL			11.5	2.9	11.4			
ARTR	4		40.1	10	39.4			
CELA	4		11.5	2.9	11.4			
<b>TOTAL</b>	8	0	63.1	15.8	62.2			
LITTER			31.2	7.8				
<b>PLOT TOTAL</b>	764	0	101.4	33.2	100			

ALLOTMENT	DATE	PLOT	EAST GRASSY 7/18/1985 WG-5	LOCATION		TRENCH INDEX SUMMARY
				1/16 SQ. FT UNITS	PERCENT	
List by Species	Mature	Seedlings	Cover	Composition	Composition, Key Species	100
Grasses (basal cover)					Cover, Live Vegetation	15.56
					Seedlings, Key Species	0
					Litter, Plot Total	20.75
					TOTAL	136.31
TOTAL	0	0	0	0		
Forbs (basal cover)						
TOTAL	0	0	0	0	0	0
Browse (foliage cover)						
ARTR	3		52.25	13.06		
CELA	6		10	2.5		
TOTAL	9	0	62.25	15.56	0	
LITTER			83	20.75		
PLOT TOTAL	9	0	62.25	36.31	0	



ALLOTMENT	EAST GRASSY		LOCATION		TREND INDEX SUMMARY
	DATE		T1N R10W SEC. 6		
PLOT	WG-5		1/16 SQ. FT	PERCENT	
List by Species	Mature	NUMBER	UNITS	Cover	Composition, Key Species
Grasses (basal cover)		Seedlings		Composition	Cover, Live Vegetation
					Seedlings, Key Species
					Litter, Plot Total
					<b>TOTAL</b>
<b>TOTAL</b>	0	0	0	0	63.91
Forbs (basal cover)					13.95
					1
					7.875
					86.735
<b>TOTAL</b>	0	0	0	0	0
Browse (foliage cover)					
ARNO	3	1	54.8	13.7	62.77
EULA	1		1	0.25	1.14
<b>TOTAL</b>	4	1	55.8	13.95	63.91
LITTER			31.5	7.875	
<b>PLOT TOTAL</b>	4	1	55.8	21.825	63.91

ALLOTMENT DATE PLOT	WEST GRASSY		LOCATION		TREND INDEX SUMMARY
	8/12/1969 WG-6		T2N R10W SEC. 31		
List by Species	Mature	Seedlings	1/16 SQ. FT UNITS	PERCENT	
Grasses (basal cover)				Composition	79
ELSA	4		7.5	1.875	15.8
					0
					0
					90.8
<b>TOTAL</b>	4	0	7.5	1.875	15.8
Forbs (basal cover)					
<b>TOTAL</b>	0	0	0	0	0
Browse (foliage cover)					
ARNO	2		28.5	7.125	60
EULA	1		1.5	0.375	3.2
ATCO	3		7	1.75	14.7
ARSP	1		3	0.75	6.3
<b>TOTAL</b>	7	0	40	10	84.2
LITTER					
<b>PLOT TOTAL</b>	11	0	47.5	11.875	100

ALLOTMENT DATE PLOT	WEST GRASSY 8/17/1970 WG-6		LOCATION T2N R10W SEC. 31		TREND INDEX SUMMARY Composition, Key Species Cover, Live Vegetation Seedlings, Key Species Litter, Plot Total TOTAL
	NUMBER Mature Seedlings	1/16 SQ. FT UNITS	COVER	PERCENT Composition	
List by Species Grasses (basal cover) ELSA	2	12	3	25	81.3 12 0 3.88 97.18
TOTAL	2	12	3	25	
Forbs (basal cover)					
TOTAL	0	0	0	0	
Browse (foliage cover)					
ARNO	2	25.5	6.38	53.2	
EULA	1	1.5	0.37	3.1	
ATCO	2	6.5	1.62	13.5	
ARSP	2	2.5	0.63	5.25	
TOTAL	7	36	9	75.05	
LITTER		15.5	3.88		
PLOT TOTAL	9	48	15.88	100.05	



ALLOTMENT	WEST GRASSY		LOCATION		TREND INDEX SUMMARY	
	DATE	9/2/1981	T2N R10W SEC. 31			
PLOT	WG-6					
List by Species	NUMBER		1/16 SQ. FT UNITS	PERCENT		Composition, Key Species
	Mature	Seedlings		Cover	Composition	
Grasses (basal cover)						96.4
ELSA	3	1	20	5	52.1	9.6
POSE	1	2	0.5	0.13	1.4	1
SIHY	1		0.1	0.03	0.3	2
						109
<b>TOTAL</b>	5	3	20.6	5.16	53.8	
Forbs (basal cover)						
HAGL		8				
<b>TOTAL</b>	0	8	0	0	0	
Browse (foliage cover)						
EULA	1		1	0.25	2.6	
ARNO	2		16	4	41.7	
TEGL		1	7	0.18	1.9	
<b>TOTAL</b>	3	1	24	4.43	46.2	
LITTER				2		
<b>PLOT TOTAL</b>	8	12	44.6	11.59	100	

ALLOTMENT	WEST GRASSY		LOCATION		TREND INDEX SUMMARY	
	DATE	6/17/1983	T2N R10W SEC. 31			
PLOT	WG-6					
List by Species	NUMBER		1/16 SQ. FT	PERCENT		Composition, Key Species
	Mature	Seedlings		Cover	Composition	
Grasses (basal cover)						82.8
ELSA	6		47.8	12	48	25
BRTE	270		14.1	3.5	14	0
POSE	1		1	0.3	1.2	6.7
						114.5
<b>TOTAL</b>	277	0	62.9	15.8	63.2	
Forbs (basal cover)						
<b>TOTAL</b>	0	0	0	0	0	
Browse (foliage cover)						
ARTR	3		32.3	8.1	32.4	
ATCO			1.6	0.4	1.6	
CELA	1		2.5	0.6	2.4	
CHVI		1	0.2	0.1	0.4	
<b>TOTAL</b>	4	1	36.6	9.2	36.8	
LITTER			26.7	6.7		
<b>PLOT TOTAL</b>	281	1	99.5	31.7	100	





ALLOTMENT DATE PLOT	WEST GRASSY 8/28/1985 WG-6		LOCATION T2N R10W SEC. 31		TREND INDEX SUMMARY Composition, Key Species Cover, Live Vegetation Seedlings, Key Species Litter, Plot Total TOTAL
	NUMBER Mature	NUMBER Seedlings	1/16 SQ. FT. UNITS	PERCENT Cover	
List by Species Grasses (basal cover)				Composition	
ELSA	6		33.25	8.31	40.3
POA	1		1	0.25	1
<b>TOTAL</b>	<b>7</b>	<b>0</b>	<b>34.25</b>	<b>8.56</b>	<b>41.3</b>
Forbs (basal cover)					
<b>TOTAL</b>	<b>0</b>	<b>0</b>	<b>0</b>	<b>0</b>	<b>0</b>
Browse (foliage cover)					
ARTR	2		40	10	48.5
ATCO			6.25	1.56	7.6
CELA	1		1.25	0.31	1.5
CHVI	1		0.6	0.15	1
<b>TOTAL</b>	<b>4</b>	<b>0</b>	<b>48.1</b>	<b>12.02</b>	<b>58.6</b>
LITTER					
<b>PLOT TOTAL</b>	<b>11</b>	<b>0</b>	<b>82.35</b>	<b>36.16</b>	<b>99.9</b>

ALLOTMENT	WEST GRASSY		LOCATION				
DATE	7/24/1989		T2N R10W SEC. 31				
PLOT	WG-6						
List by Species	NUMBER		1/16 SQ. FT. UNITS		PERCENT		TREND INDEX SUMMARY
	Mature	Seedlings	Cover	Composition	Cover	Composition	
Grasses (basal cover)							
ELSA	8		63		15.75	43.45	74.82
POSE	5		1.5		0.375	1.03	29.5
							0
							6.75
							111.07
<b>TOTAL</b>	13	0	64.5		16.125	44.48	
Forbs (basal cover)							
<b>TOTAL</b>	0	0	0		0	0	
Browse (foliage cover)							
ARNO	3		44.5		11.125	30.69	
ATCO	0		3		0.75	2.07	
EULA	2		1		0.25	0.68	
CHVI	1		5		1.25	3.44	
<b>TOTAL</b>	6	0	53.5		13.375	36.88	
LITTER			27		6.75		
<b>PLOT TOTAL</b>	19	0	118		36.25	81.36	

ALLOTMENT DATE PLOT	WEST GRASSY 8/12/1969 WG-7		LOCATION T2N R11W SEC. 23		TREND INDEX SUMMARY Composition, Key Species Cover, Live Vegetation Seedlings, Key Species Litter, Plot Total TOTAL
	NUMBER		PERCENT		
List by Species	Mature	Seedlings	Cover	Composition	
Grasses (basal cover)					
ELSA	11		2.75	33.8	89.1
POSE	10		0.875	10.8	8.1
					10
					0
					107.2
TOTAL	21	0	3.625	44.6	
Forbs (basal cover)					
TOTAL	0	0	0	0	
Browse (foliage cover)					
ARNO	2	2	2.75	33.8	
EULA	5	8	1.75	21.5	
TOTAL	7	10	4.5	55.3	
LITTER					
PLOT TOTAL	28	10	8.125	99.9	



ALLOTMENT	WEST GRASSY	LOCATION			
DATE	8/18/1970	T2N R11W SEC. 23			
PLOT	WG-7				
List by Species	NUMBER		PERCENT		TREND INDEX SUMMARY
	Mature	Seedlings	Cover	Composition	
Grasses (basal cover)					Composition, Key Species
ELSA	11	8	2	23.2	Cover, Live Vegetation
POSE	17	4	1	11.6	Seedlings, Key Species
					Litter, Plot Total
					<b>TOTAL</b>
					88.5
					8.65
					1
					2.62
					100.77
<b>TOTAL</b>	28	0	3	34.8	
Forbs (basal cover)					
<b>TOTAL</b>	0	0	0	0	
Browse (foliage cover)					
ARNO	3	1	3.25	37.7	
EULA	11	9.5	2.38	27.6	
<b>TOTAL</b>	14	1	5.63	65.3	
LITTER			2.62		
<b>PLOT TOTAL</b>	42	1	11.25	100.1	

ALLOTMENT DATE PLOT	WEST GRASSY 9/2/1981 WG-7		LOCATION T2N R11W SEC. 23		TREND INDEX SUMMARY Composition, Key Species Cover, Live Vegetation Seedlings, Key Species Litter, Plot Total TOTAL
	NUMBER		PERCENT		
	Mature	Seedlings	Cover	Composition	
Grasses (basal cover)					
ELSA	11	2	5	50	92.5
POSE	6	1	0.75	7.5	10
					3
					1
					106.5
<b>TOTAL</b>	17	3	5.75	57.5	
Forbs (basal cover)					
<b>TOTAL</b>	0	0	0	0	
Browse (foliage cover)					
EULA	3		0.75	7.5	
ARNO	1	1	3.5	35	
<b>TOTAL</b>	4	1	4.25	42.5	
LITTER			1		
<b>PLOT TOTAL</b>	21	4	11	100	

ALLOTMENT DATE PLOT	WEST GRASSY		LOCATION		TREND INDEX SUMMARY
	7/8/1985 WG-7		T2N R11W SEC. 23		
List by Species	NUMBER		1/16 SQ. FT UNITS	PERCENT	Composition, Key Species Cover, Live Vegetation Seedlings, Key Species Litter, Plot Total TOTAL
Grasses (basal cover)	Mature	Seedlings		Cover	
ELSA	15		37.25	9.31	88.3
POSE	15		7.45	1.86	15.88
					0
					4.06
					108.24
<b>TOTAL</b>	30	0	44.7	11.17	
Forbs (basal cover)					
<b>TOTAL</b>	0	0	0	0	0
Browse (foliage cover)					
CELA	4		2.6	0.65	4.1
ARNO	4		16.25	4.06	26
<b>TOTAL</b>	8	0	18.85	4.71	30.1
LITTER			16.25	4.06	
<b>PLOT TOTAL</b>	38	0	63.55	19.94	100.4



ALLOTMENT DATE PLOT	WEST GRASSY		LOCATION		TREND INDEX SUMMARY
	8/12/1969 WG-8		T2N R11W SEC. 23		
List by Species Grasses (basal cover)	NUMBER		1/16 SQ. FT UNITS	PERCENT	Composition, Key Species
	Mature	Seedlings	Cover	Composition	
ELSA	9		17	81.8	100
					7.8
					0
					0
<b>TOTAL</b>	9	0	17	81.8	<b>TOTAL</b>
Forbs (basal cover)					107.8
<b>TOTAL</b>	0	0	0	0	
Browse (foliage cover)					
ARNO	2		14	3.5	18.2
<b>TOTAL</b>	2	0	14	3.5	18.2
LITTER					
<b>PLOT TOTAL</b>	11	0	31	7.75	100

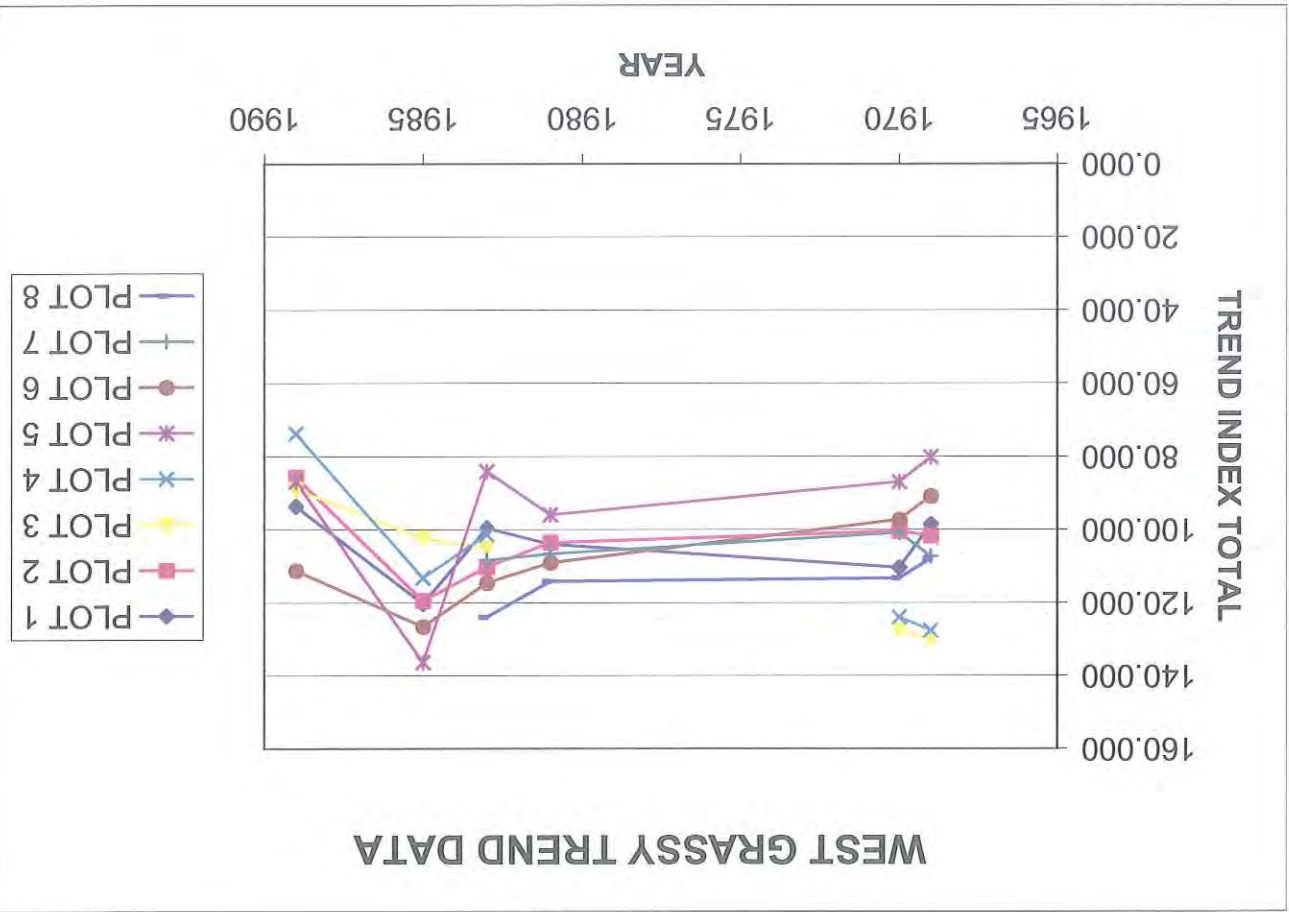
ALLOTMENT DATE PLOT	WEST GRASSY 8/18/1970 WG-8		LOCATION T2N R11W SEC. 23		TREND INDEX SUMMARY Composition, Key Species Cover, Live Vegetation Seedlings, Key Species Litter, Plot Total TOTAL
	NUMBER Mature Seedlings	1/16 SQ. FT UNITS	PERCENT Cover Composition		
List by Species Grasses (basal cover)					100
ELSA	9	18	4.5 81.8		9.33 0
					3.88
					113.21
<b>TOTAL</b>	9	18	4.5 81.8		
Forbs (basal cover)					
<b>TOTAL</b>	0	0	0	0	
Browse (foliage cover)					
ARNO	2	19.5	4.88 18.2		
<b>TOTAL</b>	2	19.5	4.88 18.2		
LITTER		15.5	3.88		
<b>PLOT TOTAL</b>	11	37.5	13.26 100		

ALLOTMENT	WEST GRASSY		LOCATION		TREND INDEX SUMMARY
	DATE	9/2/1981	T2N R11W SEC. 23		
PLOT	WG-8		1/16 SQ. FT.	PERCENT	Composition, Key Species
List by Species	Mature	Seedlings	UNITS	Cover	
Grasses (basal cover)					11.03
ELSA	7	3	32	8	3
POSE	1		0.1	0.03	1
					114.03
<b>TOTAL</b>	8	3	32.1	8.03	0
Forbs (basal cover)					
<b>TOTAL</b>	0	0	0	0	0
Browse (foliage cover)					
ARNO	2		12	3	
<b>TOTAL</b>	2	0	12	3	0
LITTER					
<b>PLOT TOTAL</b>	10	3	44.1	11.03	0



ALLOTMENT	WEST GRASSY		LOCATION				
	DATE	7/8/1985	T2N R11W SEC. 23				
	PLOT	WG-8					
List by Species	NUMBER		1/16 SQ. FT. UNITS		PERCENT		TREND INDEX SUMMARY
	Mature	Seedlings	Cover	Composition	Composition, Key Species		
Grasses (basal cover)							100
ELSA	11		45.75	59	11.44		19.3
							0
							4.54
							123.84
<b>TOTAL</b>	11	0	45.75	59	11.44		
Forbs (basal cover)							
<b>TOTAL</b>	0	0	0	0	0		
Browse (foliage cover)							
ARNO	3		31.35	41	7.84		
<b>TOTAL</b>	3	0	31.35	41	7.84		
LITTER			18.15		4.54		
<b>PLOT TOTAL</b>	14	0	77.1	100	23.82		

### WEST GRASSY TREND DATA

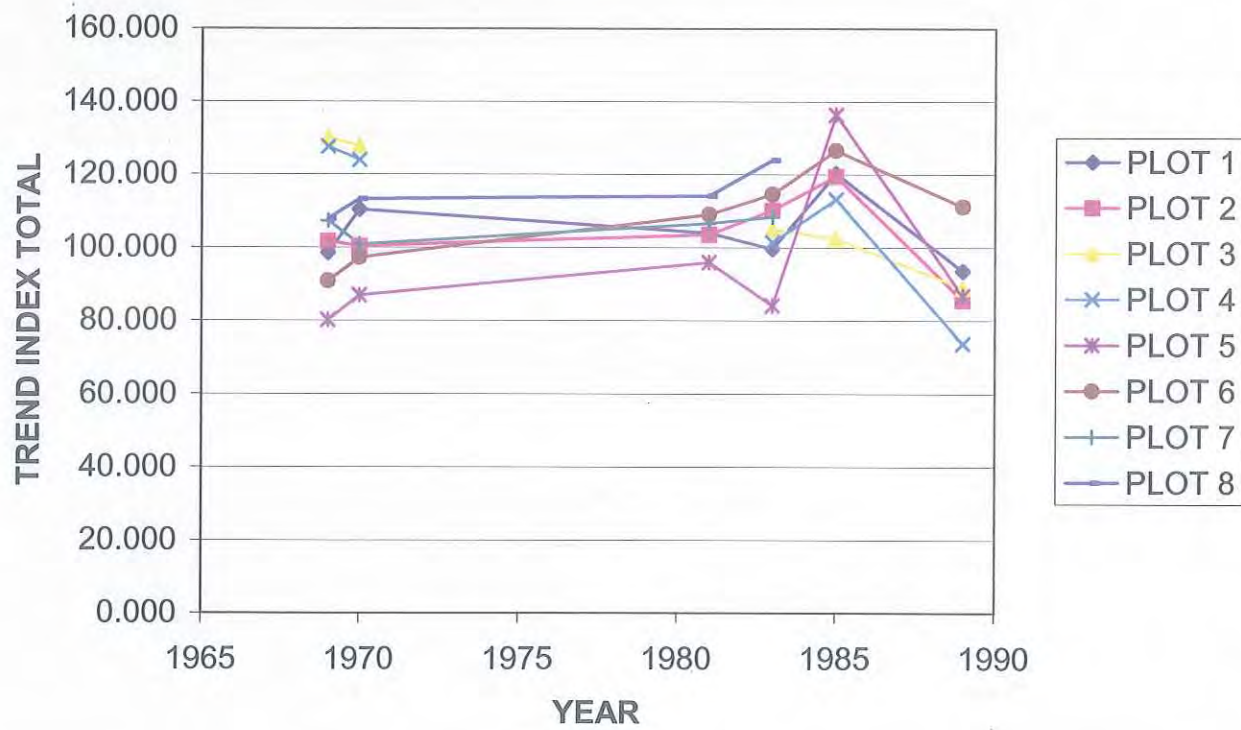


YEAR	PLOT 1	PLOT 2	PLOT 3	PLOT 4	PLOT 5	PLOT 6	PLOT 7	PLOT 8
1969	98.500	101.600	130.000	127.500	80.050	90.800	107.200	107.800
1970	110.310	100.350	127.620	123.880	86.850	97.180	100.770	113.210
1981	103.930	103.500			95.830	109.000	106.500	114.030
1983	99.500	110.100	104.900	101.300	84.000	114.500	108.240	123.840
1985	120.190	119.400	102.320	113.050	136.310	126.480		
1989	93.500	85.555	88.810	73.640	86.735	111.070		

TREND INDEX TOTAL

TREND INDEX TOTAL								
YEAR	PLOT 1	PLOT 2	PLOT 3	PLOT 4	PLOT 5	PLOT 6	PLOT 7	PLOT 8
1969	98.500	101.600	130.000	127.500	80.050	90.800	107.200	107.800
1970	110.310	100.350	127.620	123.880	86.850	97.180	100.770	113.210
1981	103.930	103.500			95.830	109.000	106.500	114.030
1983	99.500	110.100	104.900	101.300	84.000	114.500	108.240	123.840
1985	120.190	119.400	102.320	113.050	136.310	126.480		
1989	93.500	85.555	88.810	73.640	86.735	111.070		

### WEST GRASSY TREND DATA



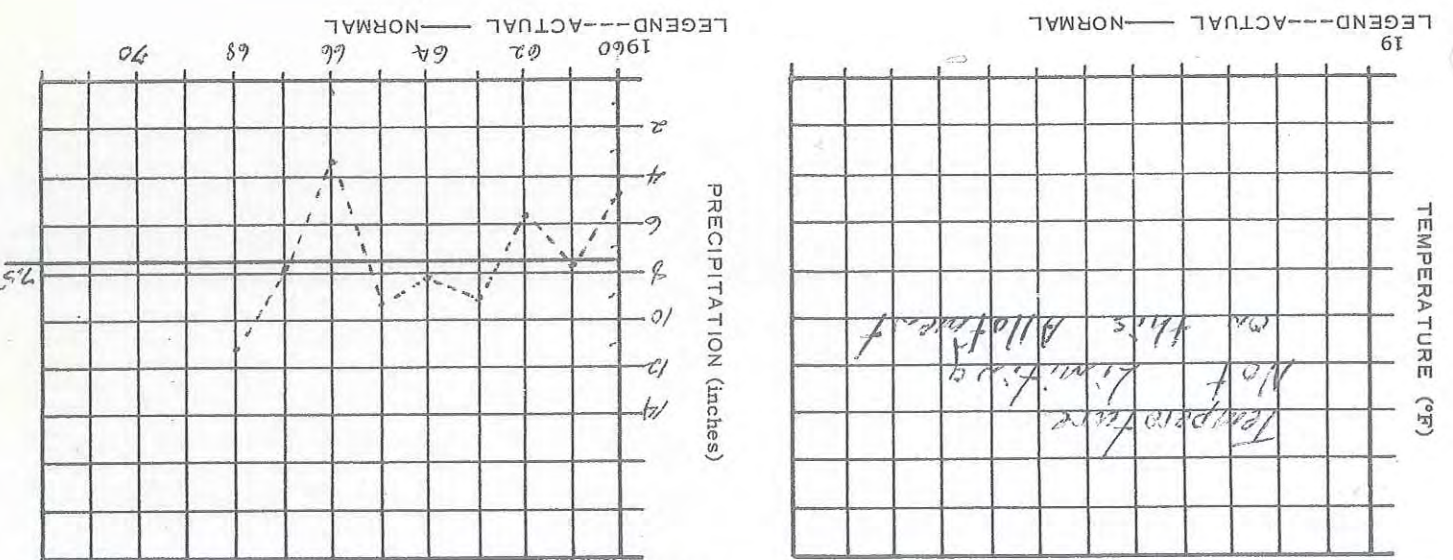
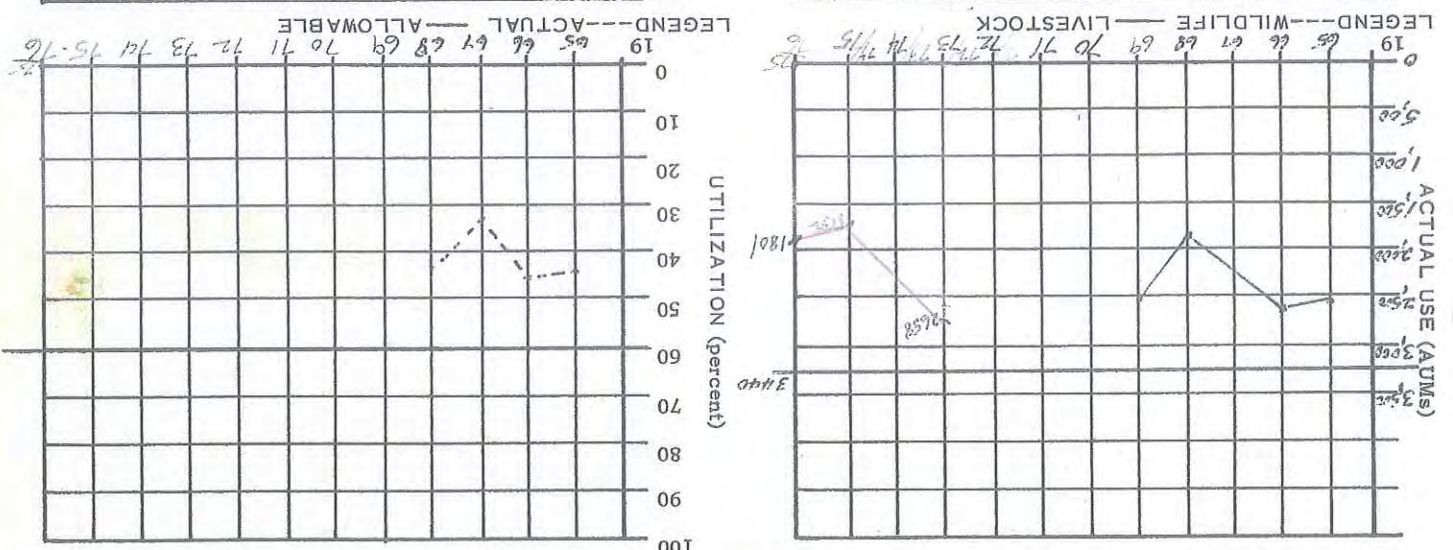
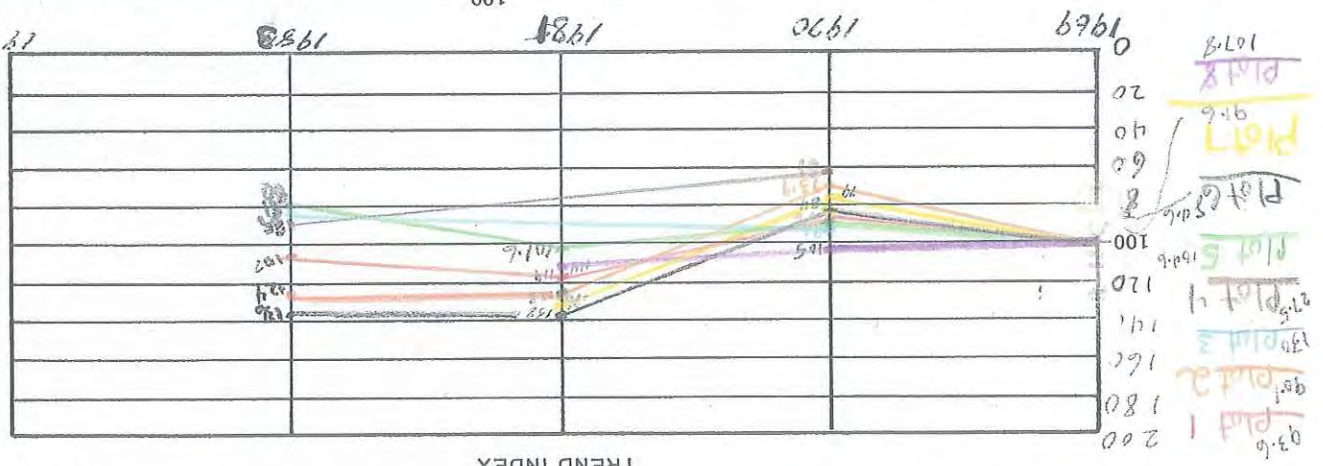


ALLOTMENT EVALUATION SUMMARY

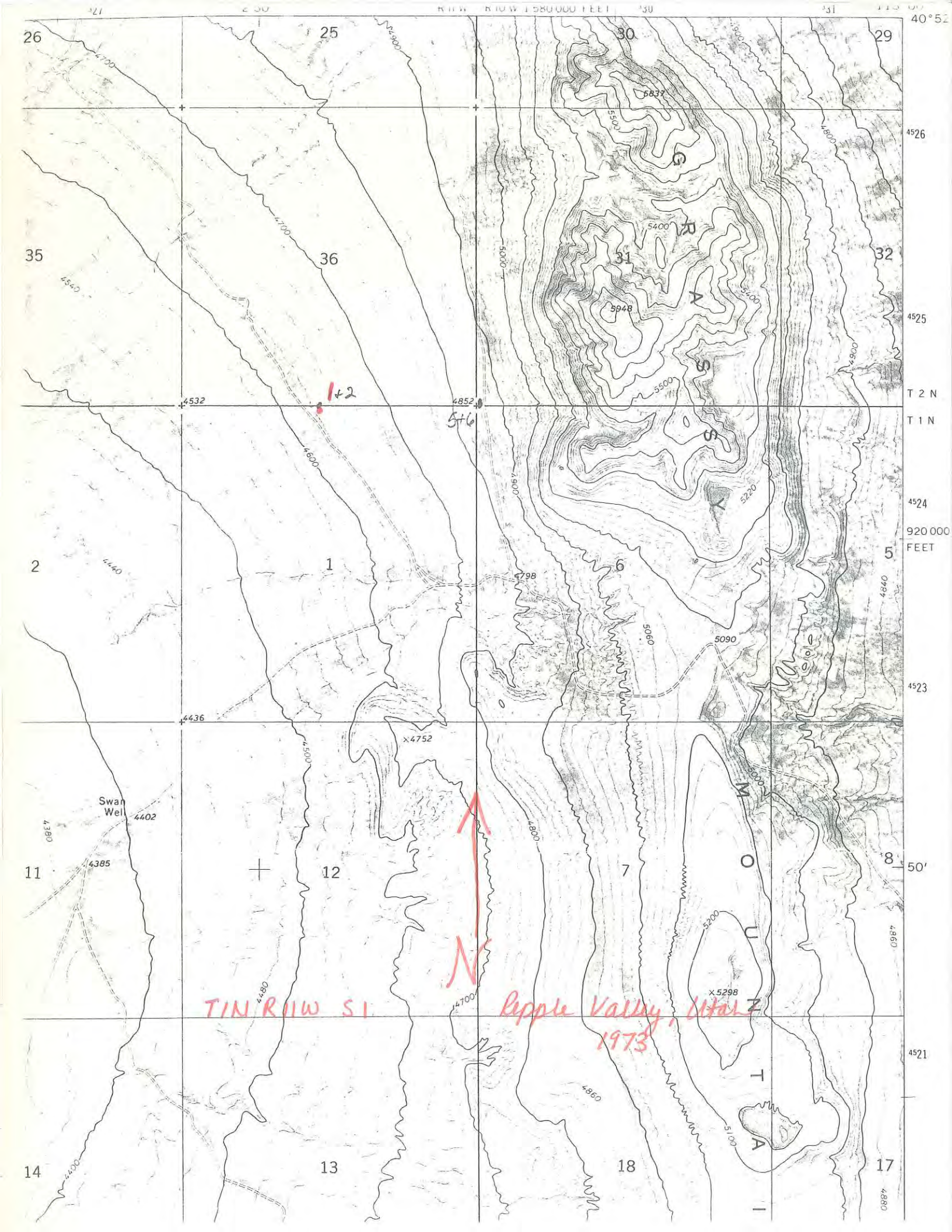
UNITED STATES  
DEPARTMENT OF THE INTERIOR  
BUREAU OF LAND MANAGEMENT

District	Self Lake
Planning Unit	Lotoside
Date	3-20-69

Allotment: *Dismond I Livestock*  
Type of Management: *Deferred Grazing*









WEST GRASSY

Range Study #1

The plot is 46<sup>~100'</sup> paces southeast of N $\frac{1}{4}$  corner of Section 1, T. 1 N., R. 11 W.  
A green, steel post marks the  $\frac{1}{4}$  corner peg.

Range Study #2

The plot is 74<sup>~150'</sup> paces north of N $\frac{1}{4}$  corner of Section 1, T. 1 N., R. 11 W.  
A green, steel post marks  $\frac{1}{4}$  corner. *post ~275' from road*

Range Study #3

The study is located .2 miles due east of N $\frac{1}{4}$  corner of Section 6,  
T. 1 N., R. 11 W. Plot #3 is 20 paces north of red, steel post.

Range Study #4

Same procedure as #3. Plot #4 is 20 paces south of red, steel post.

Range Study #5

The plot is 23 steps east of the NW section corner of Section 6, T. 1 N.,  
R. 10 W. The section corner is marked by a red, steel post.

Range Study #6

The plot is 33 steps north of the SW section corner of Section 31, T. 2 N.,  
R. 10 W. The section corner is marked by a red, steel post.

Range Study #7

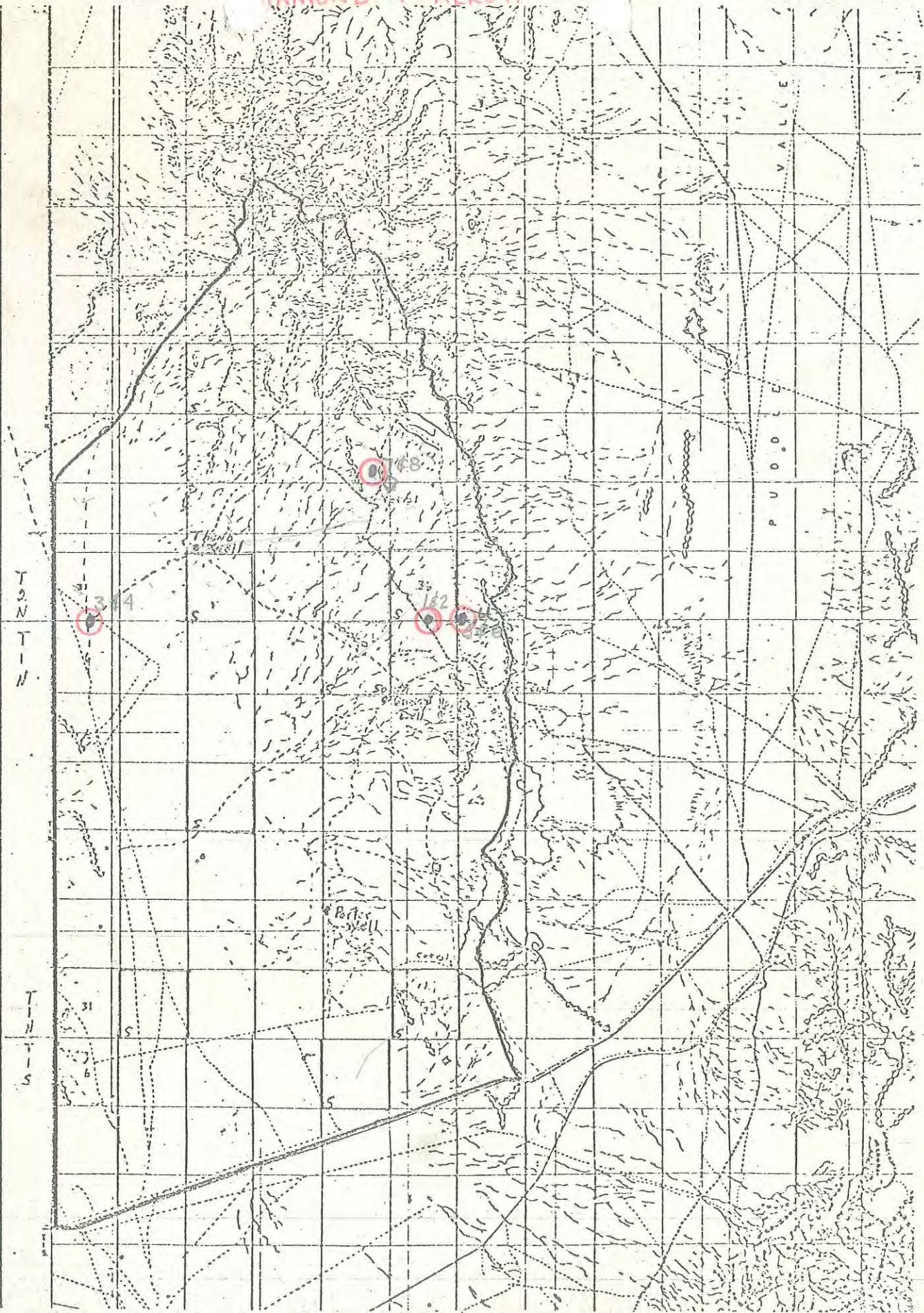
From study plots 1 and 2, follow the road northeast for <sup>3 1/2</sup> miles to an  
old corral. Then, north 1 $\frac{1}{2}$  mile to a red, steel post on the side of the  
road. The plot is 51 steps easterly from the red post.

Range Study #8

Same procedure as #7. Plot is 51 steps westerly from the red post.



DIAMOND-T. ALLOT.



u. Utilization Cages O. RANGE STUDY PLOTS



### Key Area Location

District Salt Lake Date 7-24-89

Allotment West Grassy Aerial Photo # \_\_\_\_\_

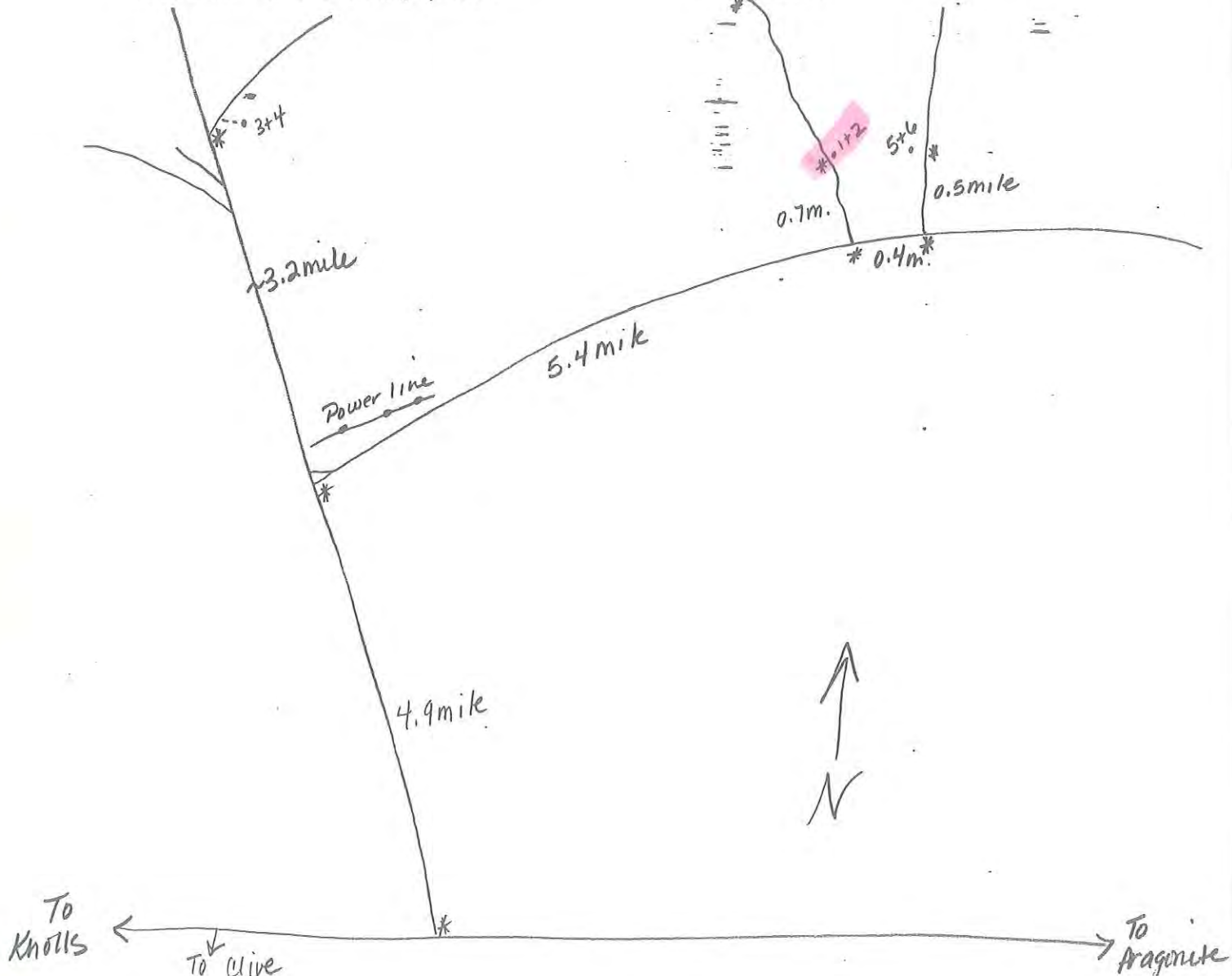
Prepared by K. Snyder or 7½' Quad Ripple Valley - Gray Back Hills

or Orthophoto Grassy Mtns.

Photo or Map Date 1973-1973-1973

### Location Sketch (Scale 1:1000)

show appropriate permanent landmarks (with names and distances) in relation to the study plot.



ALLOTMENT	WEST GRASSY		LOCATION			
DATE	8/12/1969		T1N R11W SEC. 1			
PLOT	WG-1					
	NUMBER		1/16 SQ. FT	PERCENT		TREND INDEX SUMMARY
List by Species	Mature	Seedlings	UNITS	Cover	Composition	
Grasses (basal cover)						Composition, Key Species
POSE	1		0.25	0.0625	0.5	Cover, Live Vegetation
ELSA	4		6.5	1.625	12	Seedlings, Key Species
SIHY	1		1	0.25	1.8	Litter, Plot Total
						<b>TOTAL</b>
						79.9
<b>TOTAL</b>	6	0	7.75	1.9375	14.3	13.6
Forbs (basal cover)						0
						5
						98.5
<b>TOTAL</b>	0	0	0	0	0	
Browse (foliage cover)						
ARNO	4		36.5	9.125	67	
ATCO	1		1	0.25	1.8	
ARSP	2		2.5	0.625	4.6	
EULA	2		6	1.5	11	
TESP	1		0.5	0.125	0.9	
<b>TOTAL</b>	9	1	46.5	11.625	85.3	
LITTER						
<b>PLOT TOTAL</b>	15	1	54.25	13.5625	99.6	







ALLOTMENT	WEST GRASSY		LOCATION			
DATE	6/15/1983		T1N R11W SEC. 1			
PLOT	WG-1					
List by Species <i>Grasses (basal cover)</i>	NUMBER		1/16 SQ. FT UNITS	PERCENT		TREND INDEX SUMMARY
	Mature	Seedlings		Cover	Composition	
ELSA	2		33.3	8.33	35	69
POSE	1		0.7	0.18	0.5	23.75
SIHY	4		3.5	0.88	4	0
BRTE	220		11.1	2.85	12	6.75
<b>TOTAL</b>	227	0	48.6	12.24	51.5	99.5
<i>Forbs (basal cover)</i>						
<b>TOTAL</b>	0	0	0	0	0	
<i>Browse (foliage cover)</i>						
ARTR	3		29.5	7.4	31	
CELA	2		3	0.75	3	
TESP	1		3.5	0.88	4	
ATCO	1		10	2.5	10.5	
<b>TOTAL</b>	7	0	46	11.53	48.5	
LITTER			27	6.75		
<b>PLOT TOTAL</b>	234	0	94.6	30.52	100	



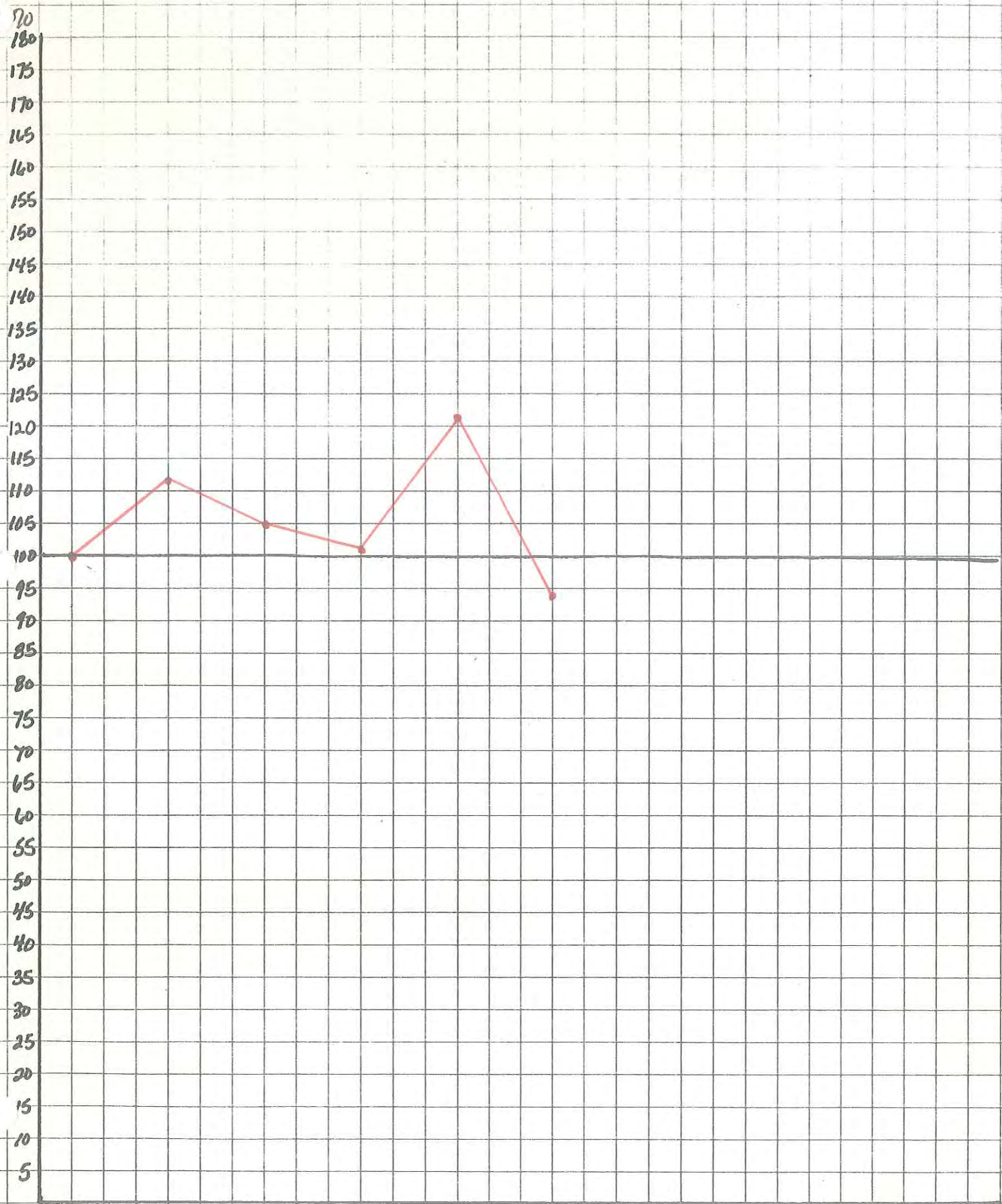
ALLOTMENT DATE PLOT	WEST GRASSY 7/18/1985 WG-1		LOCATION T1N R11W SEC. 1		TREND INDEX SUMMARY Composition, Key Species Cover, Live Vegetation Seedlings, Key Species Litter, Plot Total TOTAL
	NUMBER		PERCENT		
List by Species Grasses (basal cover)	Mature	Seedlings	1/16 SQ. FT UNITS	Cover	Composition
ELSA	3		31.25	7.81	40
POA	1		0.5	0.13	0.67
<b>TOTAL</b>	4	0	31.75	7.94	40.67
Forbs (basal cover)					
FORB	2		0.25	0.06	0.31
<b>TOTAL</b>	2	0	0.25	0.06	0.31
Browse (foliage cover)					
CELA	1		2	0.5	3
ARTR	2		35	8.75	45
ATCO			6.25	1.56	8
TESP	1		2.5	0.62	3
<b>TOTAL</b>	4	0	45.75	11.43	59
LITTER			51	12.75	
<b>PLOT TOTAL</b>	10	0	77.75	32.18	99.98

ALLOTMENT	WEST GRASSY		LOCATION		TREND INDEX SUMMARY
	DATE	PLOT	1/16 SQ. FT UNITS	PERCENT	
	7/24/1989	WG-1		T1N R11W SEC. 1	Composition, Key Species
					Cover, Live Vegetation
					Seedlings, Key Species
					Litter, Plot Total
					<b>TOTAL</b>
<b>Grasses (basal cover)</b>	<b>Mature</b>	<b>Seedlings</b>	<b>Cover</b>	<b>Composition</b>	65.75
ELSA	3	41	10.25	36.93	21.125
POSE	1	0.5	0.125	0.45	0
					6.625
					93.5
<b>TOTAL</b>	<b>4</b>	<b>0</b>	<b>10.375</b>	<b>37.38</b>	
<b>Forbs (basal cover)</b>					
<b>TOTAL</b>	<b>0</b>	<b>0</b>	<b>0</b>	<b>0</b>	
<b>Browse (foliage cover)</b>					
ATCO	1	7	1.75	6.3	
ARNO	2	32	8	28.82	
TEGL	1	4	1	3.6	
<b>TOTAL</b>	<b>4</b>	<b>0</b>	<b>10.75</b>	<b>38.72</b>	
<b>LITTER</b>					
<b>PLOT TOTAL</b>	<b>8</b>	<b>0</b>	<b>27.75</b>	<b>76.1</b>	



West Grassy - 01

### Trend Index Summary by Percent



YEAR	69	70	81	83	85	89
TOTAL %	100	112	105	101	122	94



West Grassy - 01

### Trend Index Summary

160  
155  
150  
145  
140  
135  
130  
125  
120  
115  
110  
105  
100  
95  
90  
85  
80  
75  
70  
65  
60  
55  
50  
45  
40  
35  
30  
25  
20  
15  
10  
5



YEAR	69	70	81	83	85	89
TOTAL	98.5	110.3	103.9	99.5	120.19	93.5

1989

READING # 7

PLOT # 1



TREND STUDIES WRITE-UP

EXAMINER and others present: K. Snyder

---

---

ALLOTMENT AND SITE NUMBER: West Grassy -01

DATE: 7-24-89

TIME: 9:45

SLOPE: Flat

CAMERA LENS: 28m

COMMENTS:

UNITED STATES  
DEPARTMENT OF THE INTERIOR  
BUREAU OF LAND MANAGEMENT

RANGE TREND PLOT DATA

District Salt Lake  
Resource Area Pony Express  
Date and Time 7-24-89 9:45  
Examiner K. Snyder

Allotment Name

West Grassy

NUMBER

ALLOTMENT

PLOT

01

PART I - PLOT DATA BY SQUARE FOOT SECTION

SPECIES			MATURE PLANTS	SEEDLINGS	1/16 UNITS	TOTAL SQ. INCHES	MATURE PLANTS	SEEDLINGS	1/16 UNITS	TOTAL SQ. INCHES	MATURE PLANTS	SEEDLINGS	1/16 UNITS	TOTAL SQ. INCHES	MATURE PLANTS	SEEDLINGS	1/16 UNITS	TOTAL SQ. INCHES	
GRASS	FORB	BROWSE																	
	(a)		(b)	(c)	(d)	(e)	(b)	(c)	(d)	(e)	(b)	(c)	(d)	(e)	(b)	(c)	(d)	(e)	
<u>POSE</u>											<u>1</u>	<u>.5</u>							
<u>ELSA</u>			<u>1</u>		<u>3</u>		<u>1</u>		<u>3</u>										
		<u>TEGL</u>									<u>1</u>	<u>4</u>							
		<u>LITTER</u>			<u>2</u>				<u>1</u>				<u>1</u>				<u>T</u>		<u>.5</u>
<u>ELSA</u>			<u>1</u>		<u>6</u>		<u>1</u>		<u>16</u>		<u>-</u>	<u>4</u>							
		<u>LITTER</u>			<u>6</u>				<u>T</u>				<u>1</u>				<u>T</u>		<u>T</u>
		<u>ATCO</u>	<u>1</u>		<u>7</u>														
		<u>ARNO</u>	<u>-</u>		<u>1</u>		<u>-</u>		<u>2</u>										
<u>ELSA</u>			<u>-</u>		<u>2</u>		<u>1</u>		<u>7</u>										
		<u>LITTER</u>			<u>1</u>				<u>2</u>				<u>1</u>				<u>T</u>		<u>T</u>
		<u>ARNO</u>	<u>1</u>		<u>10</u>		<u>1</u>		<u>4</u>										
		<u>LITTER</u>			<u>1</u>				<u>3</u>				<u>1</u>				<u>T</u>		<u>T</u>
		<u>ARNO</u>	<u>1</u>		<u>6</u>		<u>-</u>		<u>9</u>										
		<u>LITTER</u>			<u>3</u>				<u>2</u>				<u>1</u>				<u>T</u>		<u>T</u>



UNITED STATES  
DEPARTMENT OF THE INTERIOR  
BUREAU OF LAND MANAGEMENT

RANGE TREND PLOT DATA

District Salt Lake  
Resource Area Pony Express  
Date and Time 7-24-89 9:45  
Examiner K. Snyder

Allotment Name

West Grassy

NUMBER	
ALLOTMENT	PLOT
	<u>01</u>

PART I - PLOT DATA BY SQUARE FOOT SECTION

SPECIES			MATURE PLANTS	SEEDLINGS	1/16 UNITS	TOTAL SQ. INCHES	MATURE PLANTS	SEEDLINGS	1/16 UNITS	TOTAL SQ. INCHES	MATURE PLANTS	SEEDLINGS	1/16 UNITS	TOTAL SQ. INCHES	MATURE PLANTS	SEEDLINGS	1/16 UNITS	TOTAL SQ. INCHES
GRASS	FORB	BROWSE																
(a)	(b)	(c)	(d)	(e)	(b)	(c)	(d)	(e)	(b)	(c)	(d)	(e)	(b)	(c)	(d)	(e)		
ROSE																		
ELSA			1		3		1		3		1		.8					
	TEGL						1				4							
	LITTER				2		1				1							.8
ELSA			1		6		1		16		-		4					
	LITTER				6						1							
	ARNO		1		7													
ELSA			-		1		-		2									
			-		2		1		7									
	LITTER				1				2				1					
	ARNO		-		10		1		4									
	LITTER				1				3				1					
	ARNO		1		6		-		9									
	LITTER				3				2				1					

Column (g) - *Composition* -  $\frac{\text{Cover (Column (f)) of specie}}{\text{Total cover (of plot in Column (f))}} \times 100 = \text{percent composition}$

Column (f) - *Estimate* - Multiply Column (d) by 0.7 (3' x 3' plot) or 0.25 (5' x 5' plot)

Column (e) - *Measurement* -  $\frac{\text{Measured sq inches (Column (e))}}{1296 (3' \times 3' \text{ plot}) \text{ or } 3600 (5' \times 5' \text{ plot})} \times 100 = \text{cover}$

**PART II - SUMMARY OF PLOT DATA**

Total - Total data for each specie and enter (Part - II)

Note: Use either estimate or measurement for each species. Do not use both.

Column (e) - *Measure* - Total sq. inches covered by specie  
 Column (d) - *Estimate* - 1/16 sq. feet units covered by specie

Columns (b) & (c) - Enter number  
 Column (a) - Use four letter plant symbol

Record data for each 1' x 1' section of the plot

**PART I - PLOT DATA BY SQUARE FOOT SECTION**

(Items not listed are self-explanatory)

**SPECIFIC INSTRUCTIONS**

Print one legible copy in field for each trend plot. File with Range Trend Plot Location Data (Form 4412-24) and photographs (see Bureau Manual 4115).

GENERAL INSTRUCTIONS

$93.5 \times 100 = 9490$

LIST BY SPECIES	NUMBER		1/16 SQ. FT. UNITS (estimate)	TOTAL SQ. IN. (measure-ment)	COVER PERCENT	COMPO SITION
	MATURE PLANTS	SEED-LINGS				
Grasses (Basal Cover)						
ELSH	3		41	10.25		
POSE	1		0.5	0.125		
TOTAL						
Forbs (Basal Cover)						
Grasses (Foliage Cover)						
HTOO	1		7	1.75		
AKNO	2		32	8		
TEGL	1		4	1		
TOTAL			84.5	21.25		
Litter						
			26.5	6.625		
PLOT TOTAL				27.75		
Composition, Key Species (percent)						65.75
Cover, Live Vegetation (percent)						21.25
Seedlings, Key Species (number)						—
Litter, Plot Total (percent)						6.625
TOTAL						93.5

**PART IV - TREND INDEX SUMMARY**


**PART III - PLOT DIAGRAM**

**PART II - SUMMARY OF PLOT DATA**







1985 & 1983

READINGS # 6&5

PLOT # 1



UNITED STATES  
DEPARTMENT OF THE INTERIOR  
BUREAU OF LAND MANAGEMENT

District

Resource Area

PONY EXPRESS

Date and Time 7/8/85 12:00

Examiner ROYCE

RANGE TREND PLOT DATA

Allotment Name

WEST GRASSY #1

NUMBER

ALLOTMENT

PLOT

#1

PART I - PLOT DATA BY SQUARE FOOT SECTION

SPECIES			MATURE PLANTS	SEEDLINGS	1/16 UNITS	TOTAL SQ. INCHES	MATURE PLANTS	SEEDLINGS	1/16 UNITS	TOTAL SQ. INCHES	MATURE PLANTS	SEEDLINGS	1/16 UNITS	TOTAL SQ. INCHES	MATURE PLANTS	SEEDLINGS	1/16 UNITS	TOTAL SQ. INCHES	MATURE PLANTS	SEEDLINGS	1/16 UNITS	TOTAL SQ. INCHES
GRASS	FORB	BROWSE																				
(a)	(a)	(a)	(b)	(c)	(d)	(e)	(b)	(c)	(d)	(e)	(b)	(c)	(d)	(e)	(b)	(c)	(d)	(e)	(b)	(c)	(d)	(e)
ELSA					2.5		1		3													
POA							+		1.5		1											
		ELSA					+		2		1											
		TESP					+		2.5		1			2.5								
LITTER					2				2				3				2.5					1.5
ELSA			1		7		1		10				4.5									
		ATCO			.75																	
		ARTR	1		1																	
LITTER					7				6				2				.1					.25
1		ATCO			5.5																	
ELSA					2				2				.25									
		ARTR	1		2				3													
LITTER					3				3				2				.1					.1
		ARTR			6				3													
LITTER					3				4				1				.1					.1
	UF																		2			.25
		ARTR			12				8													
LITTER					3.5				4				1									1



PART II - SUMMARY OF PLOT DATA						PART III - PLOT DIAGRAM	
LIST BY SPECIES (a)	NUMBER		1/16 SQ. FT. UNITS (estimate) (d)	TOTAL SQ. IN. (measurement) (e)	PERCENT		
	MATURE PLANTS (b)	SEED-LINGS (c)			COVER (f)	COMPOSITION (g)	
Grasses (Basal Cover)							
ELSA	3		31.25		7.81	40.0	
POA	1		.5		.13	.67	
TOTAL							
Forbs (Basal Cover)							
Unknown Forb	2		.25		.06	.31	
TOTAL							
Browse (Foliage Cover)							
CELA	1		2.0		6.50	3.0	
ARTR	2		35.0		8.75	45.0	
AKCO			6.75		1.56	8.0	
AKSP	1		2.5		.63	3.0	
TOTAL					19.44		
Litter			51.00		12.75		
PLOT TOTAL					32.19		

PART IV - TREND INDEX SUMMARY	
Composition, Key Species (percent)	88.00
Cover, Live Vegetation (percent)	19.44
Seedlings, Key Species (number)	—
Litter, Plot Total (percent)	12.75
TOTAL	120.19

$$\frac{120.19}{98.5} \times 100 = 122.0$$

### GENERAL INSTRUCTIONS

Print one legible copy in field for each trend plot. File with Range Trend Plot Location Data (Form 4412-24) and photographs (see Bureau Manual 4115).

### SPECIFIC INSTRUCTIONS

(Items not listed are self-explanatory)

#### PART I - PLOT DATA BY SQUARE FOOT SECTION

Record data for each 1' x 1' section of the plot

- Column (a) - Use four letter plant symbol
- Columns (b) & (c) - Enter number
- Column (d) - Estimate - 1/16 sq. feet units covered by specie
- Column (e) - Measure - Total sq. inches covered by specie

Note: Use either estimate or measurement for each species. Do not use both.

Total - Total data for each specie and enter (Part - II)

Key App

ELSA  
ARTR  
AKSP  
CELA

#### PART II - SUMMARY OF PLOT DATA

Column (e) - Measurement -  $\frac{\text{Measured sq inches (Column (e))}}{1296 (3' \times 3' \text{ plot}) \text{ or } 3600 (5' \times 5' \text{ plot})} \times 100 = \text{cover}$

Column (f) - Estimate - Multiply Column (d) by 0.7 (3' x 3' plot) or 0.25 (5' x 5' plot)

Column (g) - Composition -  $\frac{\text{Cover (Column (f)) of specie}}{\text{Total cover (of plot in Column (f))}} \times 100 = \text{percent composition}$



UNITED STATES  
DEPARTMENT OF THE INTERIOR  
BUREAU OF LAND MANAGEMENT

District  
**SALT LAKE**  
Resource Area  
**PONY EXPRESS**  
Date **11:00 6-15-83**  
Examiner  
**Royce**

RANGE TREND PLOT DATA

Allotment Name **WEST GRASSY - High Moisture year, DEAD ARSP FOUND IN Plot**

NUMBER	
ALLOTMENT	PLOT
	1

PART I - PLOT DATA BY SQUARE FOOT SECTION

SPECIES			MATURE PLANTS	SEEDLINGS	1/16 UNITS	TOTAL SQ. INCHES	MATURE PLANTS	SEEDLINGS	1/16 UNITS	TOTAL SQ. INCHES	MATURE PLANTS	SEEDLINGS	1/16 UNITS	TOTAL SQ. INCHES	MATURE PLANTS	SEEDLINGS	1/16 UNITS	TOTAL SQ. INCHES	MATURE PLANTS	SEEDLINGS	1/16 UNITS	TOTAL SQ. INCHES
GRASS	FORB	BROWSE																				
	(a)		(b)	(c)	(d)	(e)	(b)	(c)	(d)	(e)	(b)	(c)	(d)	(e)	(b)	(c)	(d)	(e)	(b)	(c)	(d)	(e)
		ARTR			7.5		1		7.0													
SIHY			2		2.5		2		1.0													
BRIE			20		1.0		10		.5		10		.5		5		.25		7		.75	
		CELA													1		1.0					
		LITTER			3.0				2.0				.75				1.5				.5	
BRIE			40		2.0		80		4.0		2		.1		2		.1		2		.1	
		ARTR			4.5				6.0													
		LITTER			.5				1.5				.75				.50				.25	
		ATCO	1		2.0				8.0													
		ARTR	1		2.5		1															
BRIE			2		.1		2		.1		2		.1		2		.1		2		.1	
ELSA									.5				.3									
		LITTER			1.0				3.0				.5				.5				.1	
BRIE			10		.5		2		.1		2		.1		2		.1		2		.1	
ELSA			1		9.0		1		12.0				4.5						2			
POSA													.1				.1					
FITE		ARTR	1		2																	
		LITTER			2.5				4.0				.5				.0				.1	
ELSA					4.5				2.5													
PO											1		.5									
		CELA									1		2.0									
		TESP									1		3.5									
BRIE											2		.1		2		.1		10		.5	
		LITTER			.5				.5				.75				.3				1.5	





DATE 2/24/85  
DIST SALT LAKE  
ALLOT WEST GRASSY  
PASTURE  
PLOT NO.

TRANSECT 1  
June 22, 1983