



TRANSECT 1
August 28, 1985

1981 & 1976

READINGS # 4&3

PLOT # 1

UNITED STATES
 DEPARTMENT OF THE INTERIOR
 BUREAU OF LAND MANAGEMENT

RANGE TREND PLOT DATA

District Salt Lake
 Resource Area Pony Express
 Date and Time 9-2-81 1:30pm
 Examiner Kidd

Allotment Name

NUMBER

ALLOTMENT

PLOT

West Grassy

South

1

PART I - PLOT DATA BY SQUARE FOOT SECTION

SPECIES			MATURE PLANTS	SEEDLINGS	1/16 UNITS	TOTAL SQ. INCHES	MATURE PLANTS	SEEDLINGS	1/16 UNITS	TOTAL SQ. INCHES	MATURE PLANTS	SEEDLINGS	1/16 UNITS	TOTAL SQ. INCHES	MATURE PLANTS	SEEDLINGS	1/16 UNITS	TOTAL SQ. INCHES	MATURE PLANTS	SEEDLINGS	1/16 UNITS	TOTAL SQ. INCHES
GRASS	FORB	BROWSE																				
	(a)		(b)	(c)	(d)	(e)	(b)	(c)	(d)	(e)	(b)	(c)	(d)	(e)	(b)	(c)	(d)	(e)	(b)	(c)	(d)	(e)
	LITTER		██████	██████		██████	██████	██████		██████	██████	██████		██████	██████	██████		██████	██████	██████		██████
	LITTER		██████	██████		██████	██████	██████		██████	██████	██████		██████	██████	██████		██████	██████	██████		██████
	LITTER		██████	██████		██████	██████	██████		██████	██████	██████		██████	██████	██████		██████	██████	██████		██████
	LITTER		██████	██████		██████	██████	██████		██████	██████	██████		██████	██████	██████		██████	██████	██████		██████

PART II - SUMMARY OF PLOT DATA							PART III - PLOT DIAGRAM				
LIST BY SPECIES (a)	NUMBER		1/16 SQ. FT. UNITS (estimate) (d)	TOTAL SQ. IN. (measurement) (e)	PERCENT						
	MATURE PLANTS (b)	SEED-LINGS (c)			COVER (f)	COMPOSITION (g)					
Grasses (Basal Cover)											
E15a	4	1	17		4.25	40.7					
Si hy	2		.5		.13	1.2					
Po 5c	1		.2		.05	.5					
TOTAL											
Forbs (Basal Cover)											
Ha g/		15	T								
TOTAL											
Browse (Foliage Cover)											
Ar no	3		19		4.75	4.6				9591.5	
At co	1		2		.5	4.8				1510.43	
Eu la	2		2		.5	4.9				1	
Ar 5p	1		1		.25	2.4				1	
TOTAL											1
Litter					1					103.9	
PLOT TOTAL											112
							PART IV - TREND INDEX SUMMARY				
							Composition, Key Species (percent)		9591.5		
							Cover, Live Vegetation (percent)		1510.43		
							Seedlings, Key Species (number)		1		
							Litter, Plot Total (percent)		1		
							TOTAL		103.9 112		

Key sp E15a
Ar no
Eu la
Ar 5p

GENERAL INSTRUCTIONS

Print one legible copy in field for each trend plot. File with Range Trend Plot Location Data (Form 4412-24) and photographs (see Bureau Manual 4115).

SPECIFIC INSTRUCTIONS

(Items not listed are self-explanatory)

PART I - PLOT DATA BY SQUARE FOOT SECTION

Record data for each 1' x 1' section of the plot

- Column (a) - Use four letter plant symbol
- Columns (b) & (c) - Enter number
- Column (d) - Estimate - 1/16 sq. feet units covered by specie
- Column (e) - Measure - Total sq. inches covered by specie
- Note: Use either estimate or measurement for each species. Do not use both.
- Total - Total data for each specie and enter (Part - II)

PART II - SUMMARY OF PLOT DATA

Column (e) - Measurement - $\frac{\text{Measured sq inches (Column (e))}}{1296 (3' \times 3' \text{ plot}) \text{ or } 3600 (5' \times 5' \text{ plot})} \times 100 = \text{cover}$

Column (f) - Estimate - Multiply Column (d) by 0.7 (3' x 3' plot) or 0.25 (5' x 5' plot)

Column (g) - Composition - $\frac{\text{Cover (Column (f)) of specie}}{\text{Total cover (of plot in Column (f))}} \times 100 = \text{percent composition}$

103.9 / 98.5 = 105.7

119.6



TRANSECT 1
Sept. 2, 1981



1970 & 1969

READINGS # 2&1

PLOT # 1

Form 4412-19
July 1968)

UNITED STATES
DEPARTMENT OF THE INTERIOR
BUREAU OF LAND MANAGEMENT

District Salt Lake
Date 8/17/70
Examiner J. Perkins

RANGE TREND PLOT DATA

Allotment <u>Diamond - T</u>	Pasture <u>South</u>	Key Species <u>Arno</u>	Elevation
Grazing System <u>deferred rotation</u>	PLOT		Slope <u>3%</u>
	Number <u>1</u>	Size <u>5x5</u>	
Treatment	Vegetative Type <u>Sage-grass</u>	<u>Eula</u>	Exposure <u>SW</u>

LIST BY SPECIES (a)	NUMBER		1/16 SQ. FT. UNITS (estimate) (d)	TOTAL SQ. IN. (measure- ment) (e)	PERCENT		SIZE OF INDIVIDUAL PLANTS (A = TT ab) (h)
	MATURE PLANTS (b)	SEED- LINGS (c)			COVER (f)	COMPO- SITION (g)	
Grasses (Basal Cover)							
<u>Pose</u>	<u>1</u>		<u>T</u>		<u>-</u>	<u>-</u>	<u>1</u>
<u>Eula</u>	<u>5</u>		<u>6</u>		<u>1.5</u>	<u>19.5</u>	<u>-5-</u>
<u>Sily</u>	<u>1</u>		<u>.5</u>		<u>.06</u>	<u>.5</u>	
TOTAL							
Forbs (Basal Cover)							
TOTAL							
Browse (Foliage Cover)							
<u>Arno</u>	<u>4</u>		<u>34.5</u>		<u>8.62</u>	<u>71.8</u>	<u>42-716</u>
<u>Atco</u>	<u>1</u>		<u>1</u>		<u>.25</u>	<u>2.1</u>	<u>1</u>
<u>Atsp</u>	<u>2</u>		<u>1</u>		<u>.25</u>	<u>2.1</u>	<u>1</u>
<u>Eula</u>	<u>2</u>		<u>5</u>		<u>1.25</u>	<u>10.4</u>	<u>41</u>
<u>Tesp</u>	<u>1</u>		<u>.5</u>		<u>.06</u>	<u>.5</u>	<u>-</u>
TOTAL							
Litter			<u>14.5</u>		<u>3.62</u>		<u>31-253</u>
PLOT TOTAL					<u>15.61</u>	<u>100</u>	

Comments

TREND INDEX SUMMARY

Composition, Key Species (percent)	<u>94.74</u>
Cover, Live Vegetation (percent)	<u>11.99</u>
Seedlings, Key Species (number)	<u>0</u>
Litter, Plot Total (percent)	<u>3.62</u>
TOTAL	<u>110.3</u>

110.3 = 1126
98.5

SPECIFIC INSTRUCTIONS

Column

- (d) Each 1/16 sq. ft. unit = 0.7 percent, 3 x 3 ft. plot; 0.25 percent, 5 x 5 ft. plot
- (h) Record length and breadth - Divide by 2 for major and minor radii
1. Circle understory plants
 2. Do not use understory plants in computing cover
 3. In Trend Index Summary, cover live vegetation may be either total plot cover or cover of key species only

GENERAL INSTRUCTIONS

APPARENT TREND DATA

On-site Analysis (write concise narration of items listed below)

1. Soil stability, active erosion
2. Relative plant composition:
 - a. desirable vs. undesirable
 - b. protected vs. unprotected
3. Vigor - size, number of culms, growth, seedheads, etc
4. Reproduction
5. Evidence of grazing - past and present
6. Apparent trend

Revisitation Analysis

Compare with previous analysis. Note change in species, soil cover, litter, amount of erosion, etc. Use extra sheets, if necessary.

1. Moderate - heavy sheet & gully erosion
2. Undesirable species
Aagl + Bite. These species make up about 30% of the total plant population.
Poa is the only species that is protected. It is in small clumps under shrubs.
3. Vigor fair - poor. Ateo has the best vigor.
4. Very little reproduction
5. Ateps grasses are mipped off.
6. Statia

UNITED STATES
DEPARTMENT OF THE INTERIOR
BUREAU OF LAND MANAGEMENT

District
SALT LAKE

Date
8-12-69

Examiner
CARPENTER PERKINS

RANGE TREND PLOT DATA

Allotment <u>Diamond - T</u>	Pasture <u>SOUTH</u>	Key Species <u>ARND</u>	Elevation
Grazing System <u>DEFERRED ROTATION</u>	PLOT		Slope <u>3%</u>
Treatment	Number <u>1</u>	Size <u>5x5'</u>	Exposure <u>SOUTH WEST</u>
	Vegetative Type <u>SAGEBRUSH - GRASS</u>	<u>EISA</u>	

LIST BY SPECIES (a)	NUMBER		1/16 SQ. FT. UNITS (estimate) (d)	TOTAL SQ. IN. (measure- ment) (e)	PERCENT		SIZE OF INDIVIDUAL PLANTS (A = TT ab) (h)
	MATURE PLANTS (b)	SEED- LINGS (c)			COVER (f)	COMPO- SITION (g)	
Grasses (Basal Cover)							
<u>Pose Sand Burr</u>	<u>1</u>		<u>1/4</u>		<u>.0625</u>	<u>.5</u>	
<u>EISA Saline Milk Rag</u>	<u>4</u>		<u>6.5</u>		<u>1.625</u>	<u>12.5</u>	
<u>Silky Squirrel Tail</u>	<u>1</u>		<u>1</u>		<u>.250</u>	<u>1.9</u>	
TOTAL			<u>8</u>				
Forbs (Basal Cover)							
TOTAL							
Browse (Foliage Cover)							
<u>Arnd Black Sage</u>	<u>4</u>		<u>3.625</u>		<u>9.125</u>	<u>10.7</u>	
<u>HTCO Shad Sage</u>	<u>1</u>		<u>1</u>		<u>.250</u>	<u>1.3</u>	
<u>HTSP</u>	<u>2</u>		<u>2.625</u>		<u>.625</u>	<u>14.6</u>	
<u>EISA Winter For</u>	<u>2</u>		<u>6</u>		<u>1.500</u>	<u>11</u>	
<u>Tesp</u>		<u>1</u>	<u>1/2</u>		<u>.125</u>	<u>6.9</u>	
TOTAL			<u>46.5</u>		<u>13.5625</u>	<u>100.00</u>	
Litter							
PLOT TOTAL							

Comments

TREND INDEX SUMMARY

Composition, Key Species (percent)	<u>79.9</u>
Cover, Live Vegetation (percent)	<u>13.6</u>
Seedlings, Key Species (number)	<u>0</u>
Litter, Plot Total (percent)	<u>5</u>
TOTAL	<u>98.5</u>

98.5
98.5 = 100%

SPECIFIC INSTRUCTIONS

Column

- (d) Each 1/16 sq. ft. unit = 0.7 percent, 3 × 3 ft. plot; 0.25 percent, 5 × 5 ft. plot
- (h) Record length and breadth – Divide by 2 for major and minor radii
1. Circle understory plants
 2. Do not use understory plants in computing cover
 3. In Trend Index Summary, cover live vegetation may be either total plot cover or cover of key species only

GENERAL INSTRUCTIONS

APPARENT TREND DATA

On-site Analysis (write concise narration of items listed below)

1. Soil stability, active erosion
2. Relative plant composition:
 - a. desirable vs. undesirable
 - b. protected vs. unprotected
3. Vigor—size, number of culms, growth, seedheads, etc
4. Reproduction
5. Evidence of grazing—past and present
6. Apparent trend

Revisitation Analysis

Compare with previous analysis. Note change in species, soil cover, litter, amount of erosion, etc. Use extra sheets, if necessary.

001
05/51
05

UNITED STATES
DEPARTMENT OF THE INTERIOR
BUREAU OF LAND MANAGEMENT

District
Salt Lake
Date
3/28/69
Examiner
Decker-King

RANGE TREND PLOT DATA

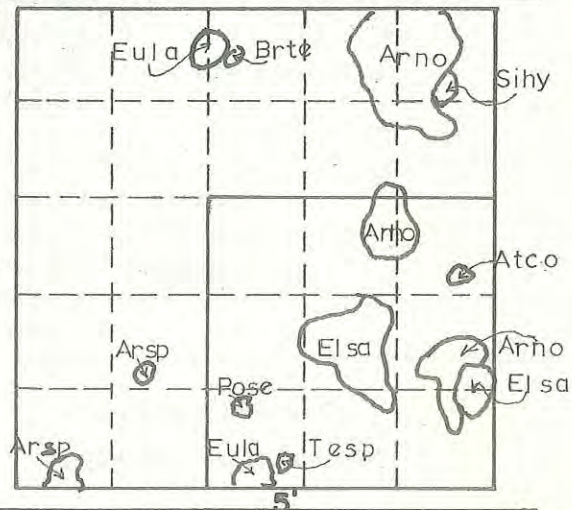
Allotment DIAMOND T LIVESTOCK Co.	Pasture South	Key Species Arno	Elevation 5000'
Grazing System Deferred Grazing	PLOT Number 1 Size 5'		Slope 3%
Treatment Grazed	Vegetative Type 13(4) Atco, Arno, Elsa	Eula	Exposure Southwest

LIST BY SPECIES (a)	NUMBER		1/16 SQ. FT. UNITS (estimate) (d)	TOTAL SQ. IN. (measure- ment) (e)	PERCENT.		SIZE OF INDIVIDUAL PLANTS (A = TT ab) (h)
	MATURE PLANTS (b)	SEED- LINGS (c)			COVER (f)	COMPO- SITION (g)	
Grasses (Basal Cover)							
Pose	1		1	28.3	.78	1.22	Pose (3.14)(3 x 3) = 28.3
Elsa	2	2	14	474.1	13.17	20.45	Elsa (3.14)(9 x 9) = 254.3 " (3.14)(5 x 4) = 62.8 " (3.14)(6 x 5) = 94.2 " (3.14)(5 x 4) = 62.8
Brte		1	1	3.1	.09	.14	Brte (3.14)(1 x 1) = 3.1
Sihy	1		1.5	50.2	1.39	2.16	Sihy (3.14)(4 x 4) = 50.2
TOTAL	4	3	17.5	555.7	15.43	23.97	555.7
Forbs (Basal Cover)							
NONE							Arno 3.14(15 x 13) = 612.3 " " (11 x 11) = 379.9 " 3.14(11 x 10) = 345.4 " 3.14(5 x 11) = 62.8
TOTAL							
Browse (Foliage Cover)							
Arno	3	1	29	1400.4	38.90	60.42	Atco 3.14(2 x 3) = 12.6 Arsp 3.14(8 x 4) = 100.5 " (3 x 1) = 9.4
Atco		1	1	12.6	.35	.55	Eula 3.14(4 x 4) = 50.2 " 3.14(6 x 9) = 170.0
Arsp	2		1	109.9	3.05	4.74	Tesp 3.14(3 x 2) = 18.9
Eula	2		5	220.2	6.12	9.50	
Tesp		1	.5	18.9	.53	.82	
TOTAL	7	3	36.5	1762.0	48.95	76.03	1762.0
Litter							
PLOT TOTAL				2317.7	64.38	100.00	

Comments

Plot is located 46 paces SE of N 1/4 corner of Section 1 T. 2 N. R. 11 W. SLM. Green steel post marks 1/4 corner.

TREND INDEX SUMMARY	
Composition, Key Species (percent)	86.99
Cover, Live Vegetation (percent)	64.38
Seedlings, Key Species (number)	3.00
Litter, Plot Total (percent)	
TOTAL	154.57

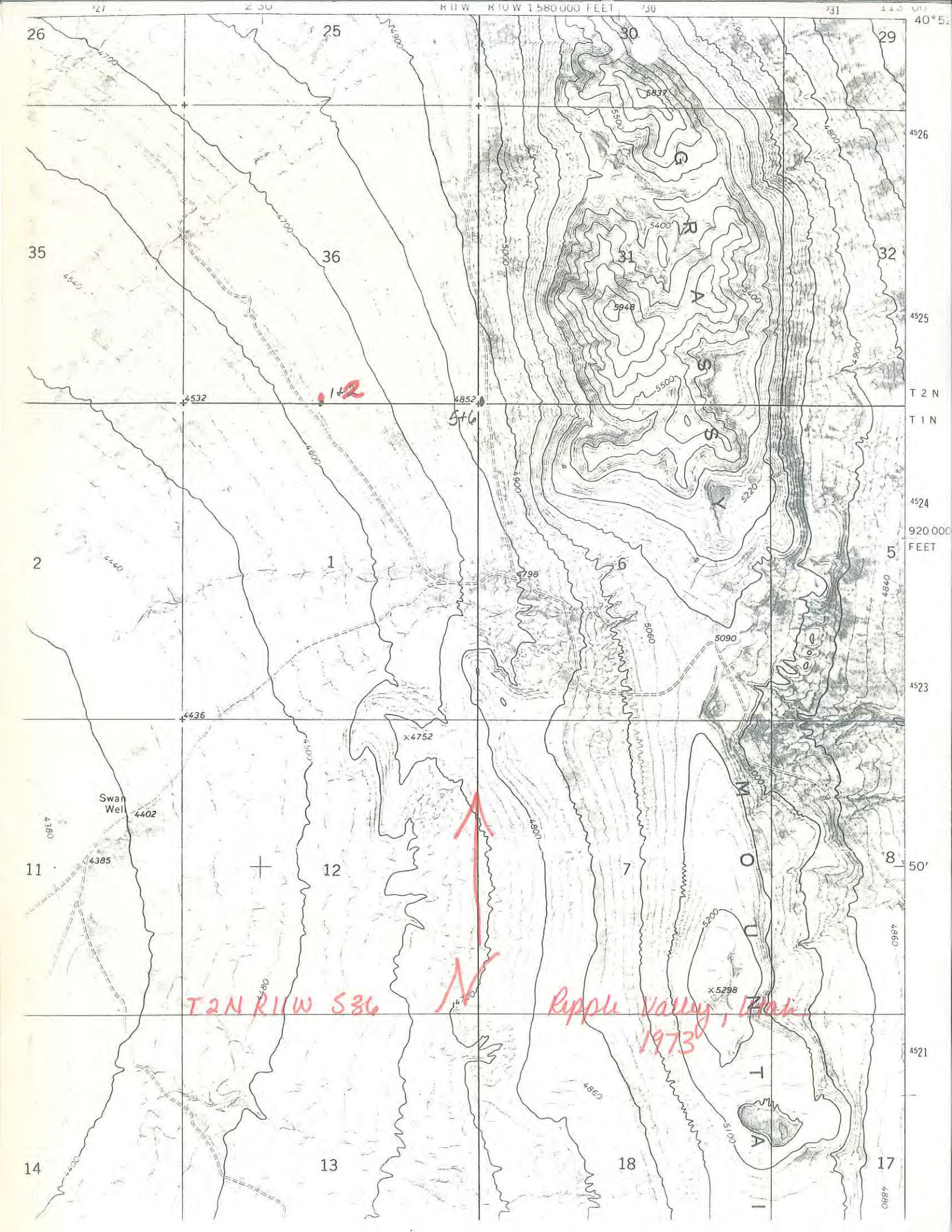




TRANSECT 1
Sept. 17, 1969



TRANSECT 1
August 17, 1970



WEST GRASSY

Range Study #1

The plot is 46^{100'} paces southeast of N $\frac{1}{4}$ corner of Section 1, T. 1 N., R. 11 W.
A green, steel post marks the $\frac{1}{4}$ corner peg.

Range Study #2

post ~275' from road
The plot is 74^{~100'} paces north of N $\frac{1}{4}$ corner of Section 1, T. 1 N., R. 11 W.
A green, steel post marks $\frac{1}{4}$ corner.

Range Study #3

The study is located .2 miles due east of N $\frac{1}{4}$ corner of Section 6,
T. 1 N., R. 11 W. Plot #3 is 20 paces north of red, steel post.

Range Study #4

Same procedure as #3. Plot #4 is 20 paces south of red, steel post.

Range Study #5

The plot is 23 steps east of the NW section corner of Section 6, T. 1 N.,
R. 10 W. The section corner is marked by a red, steel post.

Range Study #6

The plot is 33 steps north of the SW section corner of Section 31, T. 2 N.,
R. 10 W. The section corner is marked by a red, steel post.

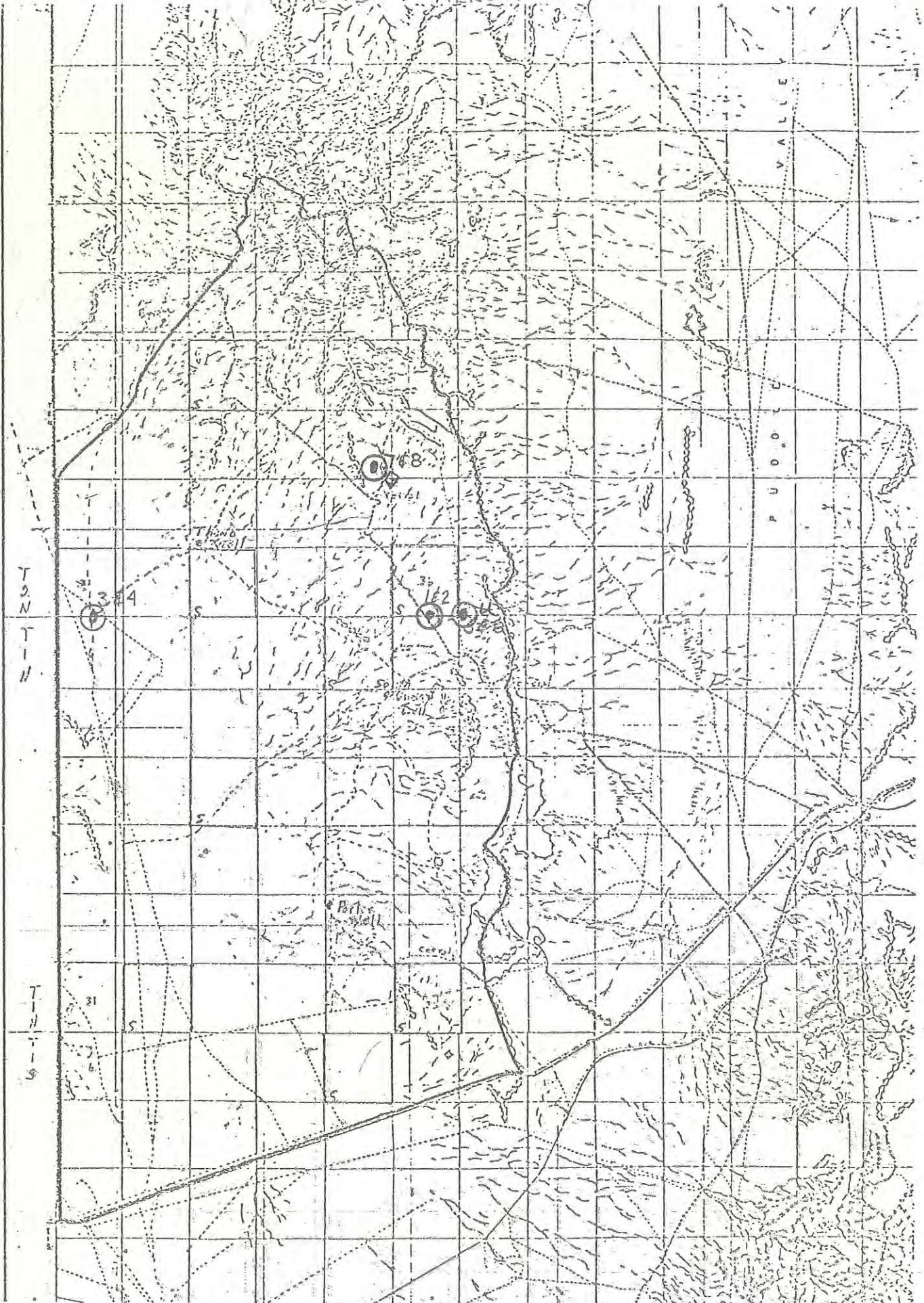
Range Study #7

From study plots 1 and 2, follow the road northeast for ^{3 1/2} miles to an
old corral. Then, north 1 $\frac{1}{2}$ mile to a red, steel post on the side of the
road. The plot is 51 steps easterly from the red post.

Range Study #8

Same procedure as #7. Plot is 51 steps westerly from the red post.

DAMOND-T. ALLOT



in Utilization Case. O = RANGE STUDY PLOTS

Key Area Location

District Salt Lake Date 7-24-89

Allotment West Grassy Aerial Photo # _____

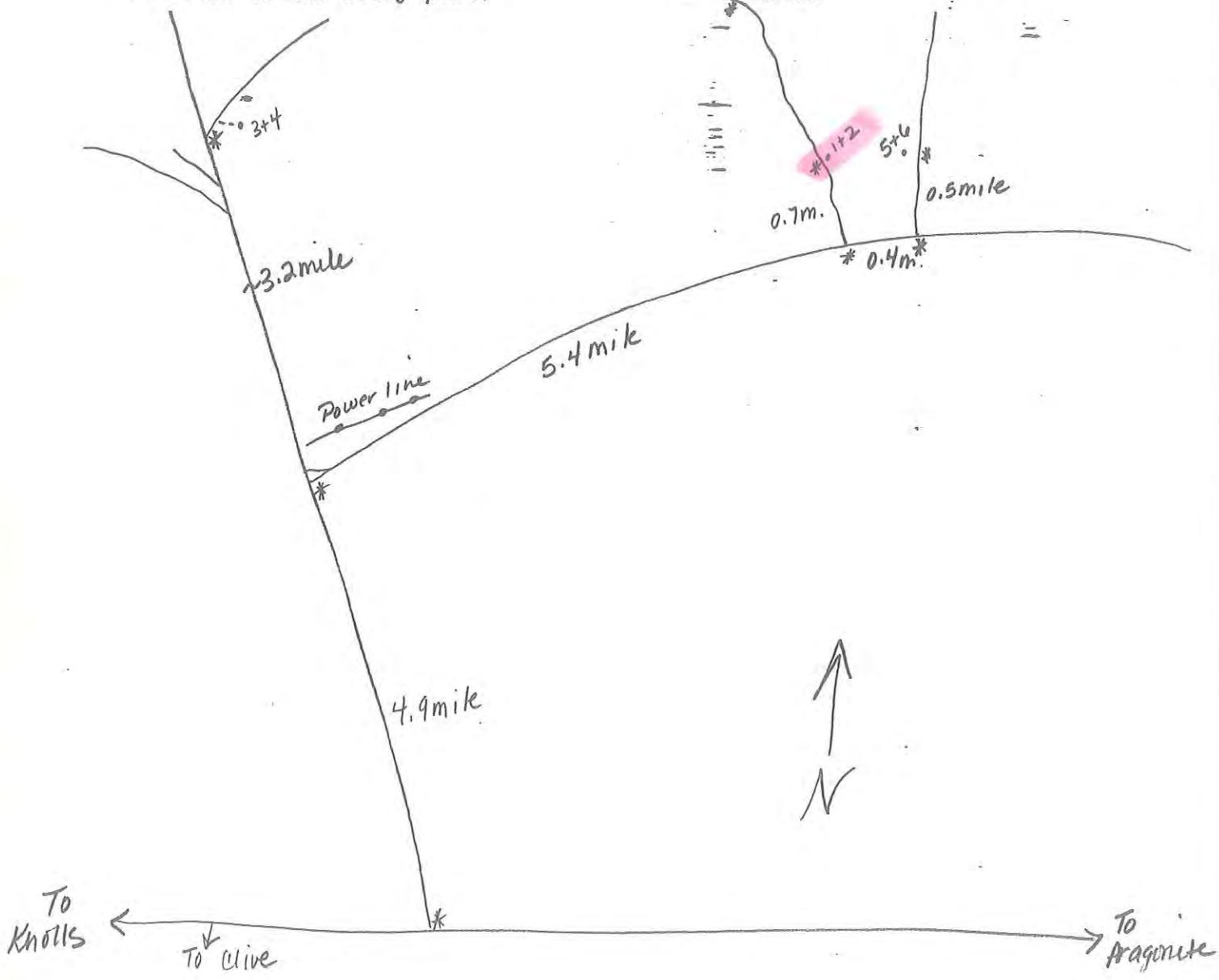
Prepared by K. Snyder or 7½' Quad Ripple Valley - Gray Back Hills

or ~~Orthophoto~~ Grassy Mtns.

Photo or Map Date 1973-1973-1973

Location Sketch (Scale 1:100)

show appropriate permanent landmarks (with names and distances) in relation to the study plot.



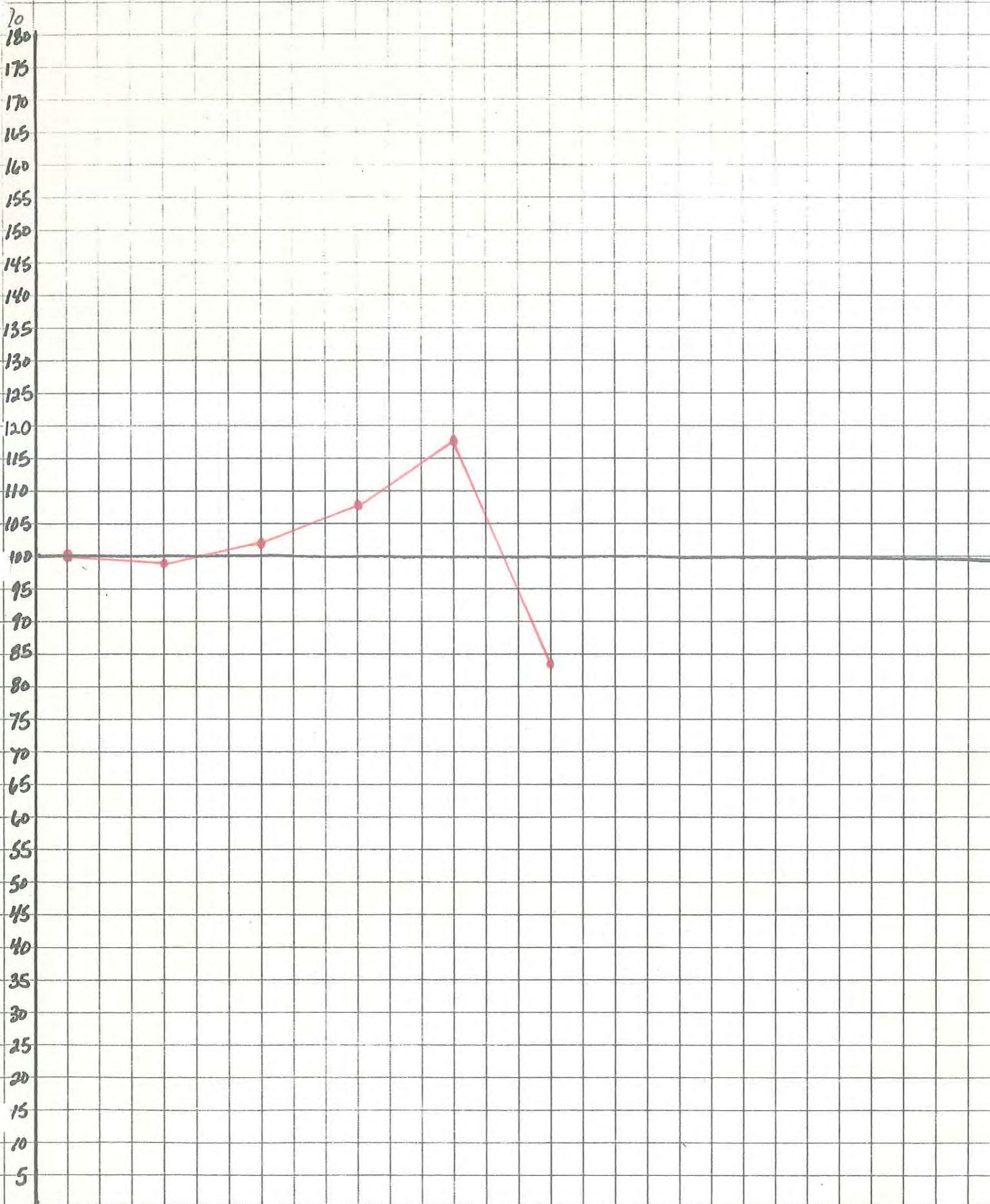
ALLOTMENT	WEST GRASSY		LOCATION							
DATE	8/17/1970		T2N R11W SEC. 6							
PLOT	WG-2									
List by Species	NUMBER		1/16 SQ. FT UNITS	PERCENT		TREND INDEX SUMMARY				
	Mature	Seedlings		Cover	Composition					
Grasses (basal cover)										
POSE	4		1	0.25	1.6				83.6	
ELSA	1		1	0.25	1.6				15.25	
									0	
									1.5	
									100.35	
TOTAL	5	0	2	0.5	3.2					
<i>Forbs (basal cover)</i>										
TOTAL	0	0	0	0	0					
<i>Browse (foliage cover)</i>										
ARNO	4		45	11.25	73.8					
EULA	3		5	1.25	8.2					
ARSP	3		4	1	6.8					
ATCO	1		5	1.25	8.2					
TOTAL	11	0	59	14.75	97					
LITTER			6	1.5						
PLOT TOTAL	16	0	61	16.75	100.2					

ALLOTMENT	WEST GRASSY		LOCATION							
DATE	6/15/1983		T2N R11W SEC. 6							
PLOT	WG-2									
List by Species	NUMBER		1/16 SQ. FT UNITS	PERCENT		TREND INDEX SUMMARY				
	Mature	Seedlings		Cover	Composition					
<i>Grasses (basal cover)</i>										
ELSA	1		7	1.8	8	Composition, Key Species	85.5			
POSE	7		2.6	0.7	3	Cover, Live Vegetation	21.3			
BRT	100		2.2	0.6	3	Seedlings, Key Species	0			
SIHY	3		1.1	0.3	1.5	Litter, Plot Total	3.3			
TOTAL	111	0	12.9	3.4	15.5	TOTAL	110.1			
<i>Forbs (basal cover)</i>										
TOTAL	0	0	0	0	0					
<i>Browse (foliage cover)</i>										
ARTR	3		59.4	14.9	70					
CELA	4		5.6	1.4	7.5					
ATCO	2		4.4	1.1	5					
ARSP	1		2	0.5	2					
TOTAL	10	0	71.4	17.9	84.5					
<i>LITTER</i>			13.3	3.3						
PLOT TOTAL	121	0	84.3	24.6	100					

ALLOTMENT	WEST GRASSY		LOCATION						
DATE	7/18/1985		T2N R11W SEC. 6						
PLOT	WG-2								
List by Species	NUMBER		1/16 SQ. FT UNITS	PERCENT		TREND INDEX SUMMARY			
	Mature	Seedlings		Cover	Composition				
Grasses (basal cover)									
POA	2		1.75	0.44	2.04				89.3
SIHY	1		1	0.25	1.16				21.6
ELSA	1		2.25	0.56	2.6				0
									8.5
									119.4
TOTAL	4	0	5	1.25	5.8				
<i>Forbs (basal cover)</i>									
TOTAL	0	0	0	0	0				
<i>Browse (foliage cover)</i>									
CELA	2		3	0.75	3.48				
ARTR	3		67.75	16.94	78.54				
ATCO	2		9.5	2.38	11.03				
ARSP	1		1	0.25	1.16				
TOTAL	8	0	81.25	20.32	94.21				
LITTER			34.05	8.51					
PLOT TOTAL	12	0	86.25	30.08	100.01				

West Grassy - 02

Trend Index Summary by Percent



YEAR

TOTAL %

69

70

81

83

85

89

100

99

102

108

117.5

84

West Grassy - 02

Trend Index Summary

160
155
150
145
140
135
130
125
120
115
110
105
100
95
90
85
80
75
70
65
60
55
50
45
40
35
30
25
20
15
10
5



YEAR	69	70	81	83	85	89
TOTAL	101.6	100.35	103.5	110.1	119.4	85.5

1989

READING # 7

PLOT # 2

TREND STUDIES WRITE-UP

EXAMINER and others present: K. Snyder

ALLOTMENT AND SITE NUMBER: West Grassy - 02

DATE: 7-24-89

TIME: 10:00

SLOPE: Flat

CAMERA LENS: 28m

COMMENTS:

U.S. DEPARTMENT OF THE INTERIOR
BUREAU OF LAND MANAGEMENT

TRANSECT DATA SHEET

EXAMINER K. Snyder
BLM ADMIN UNIT (ST/DI/RA/PU) Pony Express
ALLOTMENT West Grassy
PASTURE

TRANSECT NUMBER 1+2

DATE (YYMMDD) 8:9:07:24

GROUND COVER DATA		HITS	PLANT LIST			SOIL FACTOR ITEMS	RATING
BASAL	DOT COUNT		SYMBOL	SYMBOL	SYMBOL		
BARE GROUND		43				SOIL MOVEMENT	
PERSISTENT LITTER		3				SURFACE LITTER	
NON-PERSISTENT LITTER		4				SURFACE ROCK	
GRAVEL (2mm - 3")		18				PEDESTALLING	
COBBLE (3" - 10")		4				FLOW PATTERNS	
STONE (> 10")		2				RILLS	
BEDROCK		2				GULLIES	
		74				SOIL SURFACE FACTOR TOTAL	

LEVEL OF TRANSECT HIT					HITS	LEVEL OF TRANSECT HIT					HITS
BASAL	CANOPY 1	CANOPY 2	CANOPY 3	DOT COUNT		BASAL	CANOPY 1	CANOPY 2	CANOPY 3	DOT COUNT	
ARNO					12						
ATCO					6						
ELSA					2						
ORHY					2						
SIHY					1						
EULA					3						
					26						

UNITED STATES
DEPARTMENT OF THE INTERIOR
BUREAU OF LAND MANAGEMENT

RANGE TREND PLOT DATA

District
Salt Lake

Resource Area
Pony Express

Date and Time *7-24-89 10:00*

Examiner
K. Snyder

Allotment Name

West Grassy

NUMBER

ALLOTMENT

PLOT

02

PART I - PLOT DATA BY SQUARE FOOT SECTION

SPECIES			MATURE PLANTS	SEEDLINGS	1/16 UNITS	TOTAL SQ. INCHES	MATURE PLANTS	SEEDLINGS	1/16 UNITS	TOTAL SQ. INCHES	MATURE PLANTS	SEEDLINGS	1/16 UNITS	TOTAL SQ. INCHES	MATURE PLANTS	SEEDLINGS	1/16 UNITS	TOTAL SQ. INCHES	MATURE PLANTS	SEEDLINGS	1/16 UNITS	TOTAL SQ. INCHES	
GRASS	FORB	BROWSE																					
	(a)		(b)	(c)	(d)	(e)	(b)	(c)	(d)	(e)	(b)	(c)	(d)	(e)	(b)	(c)	(d)	(e)	(b)	(c)	(d)	(e)	
<i>SIFY</i>			<i>1</i>		<i>.5</i>																		
		<i>EULA</i>					<i>1</i>		<i>.5</i>														
		<i>ARNO</i>													<i>1</i>		<i>.5</i>		<i>1</i>			<i>6</i>	
		LITTER			<i>T</i>				<i>.5</i>				<i>T</i>				<i>T</i>					<i>.5</i>	
		<i>ATCO</i>									<i>1</i>		<i>4</i>		<i>1</i>								
		<i>EULA</i>					<i>1</i>		<i>.5</i>														
		LITTER			<i>1</i>				<i>1</i>				<i>1</i>				<i>T</i>					<i>T</i>	
<i>SIFY</i>											<i>4</i>		<i>1</i>										
		<i>ARNO</i>			<i>5</i>		<i>-</i>		<i>11</i>		<i>1</i>		<i>2</i>										
		<i>ATCO</i>									<i>1</i>		<i>2</i>		<i>1</i>		<i>3</i>						
		<i>EULA</i>					<i>1</i>		<i>.7</i>														
		LITTER			<i>2</i>				<i>2</i>				<i>3</i>				<i>1</i>					<i>T</i>	
		<i>ARNO</i>			<i>7</i>		<i>1</i>		<i>10</i>		<i>1</i>		<i>2</i>		<i>1</i>		<i>.3</i>						
<i>POSE</i>											<i>2</i>		<i>.3</i>										
		LITTER			<i>3</i>				<i>1</i>				<i>T</i>				<i>T</i>					<i>T</i>	
<i>POSE</i>			<i>3</i>		<i>.5</i>																		
<i>ELSA</i>			<i>1</i>		<i>.2</i>																		
		<i>ARNO</i>	<i>-</i>		<i>3</i>		<i>-</i>		<i>4</i>		<i>1</i>		<i>2</i>										
		LITTER			<i>.5</i>				<i>2</i>				<i>2</i>				<i>T</i>					<i>T</i>	

PART II - SUMMARY OF PLOT DATA							PART III - PLOT DIAGRAM			
LIST BY SPECIES (a)	NUMBER		1/16 SQ. FT. UNITS (estimate) (d)	TOTAL SQ. IN. (measurement) (e)	PERCENT					
	MATURE PLANTS (b)	SEED-LINGS (c)			COVER (f)	COMPOSITION (g)				
Grasses (Basal Cover)										
POSE	5		0.8		0.2	0.89				
SIHY	5		1.5		0.37	1.65				
ELSA	1		2		0.5	2.23				
TOTAL										
Forbs (Basal Cover)										
TOTAL										
Browse (Foliage Cover)										
EULA	3		1.7		0.425	1.9				
ARNO	3		52.8		13.2	59.1				
ATCO	1		10		2.5	11.19				
TOTAL			68.8		17.2					
er			20.5		5.125					
PLOT TOTAL					22.325					
							PART IV - TREND INDEX SUMMARY			
							Composition, Key Species (percent)	63.23		
							Cover, Live Vegetation (percent)	17.2		
							Seedlings, Key Species (number)	-		
							Litter, Plot Total (percent)	5.125		
							TOTAL	85.5		

$$\frac{85.5}{101.6} \times 100 = 84.90$$

GENERAL INSTRUCTIONS

Print one legible copy in field for each trend plot. File with Range Trend Plot Location Data (Form 4412-24) and photographs (see Bureau Manual 4115).

SPECIFIC INSTRUCTIONS

(Items not listed are self-explanatory)

PART I - PLOT DATA BY SQUARE FOOT SECTION

Record data for each 1' x 1' section of the plot

Column (a) - Use four letter plant symbol

Columns (b) & (c) - Enter number

Column (d) - Estimate - 1/16 sq. feet units covered by specie

Column (e) - Measure - Total sq. inches covered by specie

Note: Use either estimate or measurement for each species. Do not use both.

Total - Total data for each specie and enter (Part - II)

PART II - SUMMARY OF PLOT DATA

Column (e) - Measurement - $\frac{\text{Measured sq inches (Column (e))}}{1296 (3' \times 3' \text{ plot}) \text{ or } 3600 (5' \times 5' \text{ plot})} \times 100 = \text{cover}$

Column (f) - Estimate - Multiply Column (d) by 0.7 (3' x 3' plot) or 0.25 (5' x 5' plot)

Column (g) - Composition - $\frac{\text{Cover (Column (f)) of specie}}{\text{Total cover (of plot in Column (f))}} \times 100 = \text{percent composition}$



1985 & 1983

READINGS # 6&5

PLOT # 2

UNITED STATES
DEPARTMENT OF THE INTERIOR
BUREAU OF LAND MANAGEMENT

District **SALT LAKE**
Resource Area **PONY EXPRESS**
Date and Time **7/1/85 11:30**
Examiner **ROYCE**

RANGE TREND PLOT DATA

Allotment Name

WEST GRASSY #2

NUMBER

ALLOTMENT

PLOT

#2

PART I - PLOT DATA BY SQUARE FOOT SECTION

SPECIES			MATURE PLANTS	SEEDLINGS	1/16 UNITS	TOTAL SQ. INCHES	MATURE PLANTS	SEEDLINGS	1/16 UNITS	TOTAL SQ. INCHES	MATURE PLANTS	SEEDLINGS	1/16 UNITS	TOTAL SQ. INCHES	MATURE PLANTS	SEEDLINGS	1/16 UNITS	TOTAL SQ. INCHES	MATURE PLANTS	SEEDLINGS	1/16 UNITS	TOTAL SQ. INCHES	
GRASS	FORB	BROWSE																					
(a)	(a)	(a)	(b)	(c)	(d)	(e)	(b)	(c)	(d)	(e)	(b)	(c)	(d)	(e)	(b)	(c)	(d)	(e)	(b)	(c)	(d)	(e)	
POA			1		.25																		
		CELA ARTR			.50		1		2												.25		4
		LITTER			.25				.1				.5					.5					1
		ATCO AKSP ARTR									1		6					.5					
					1				2														
		LITTER			3				3				1					.1					.1
		ARTR			9.5				14		1		3										
									15		1		1										
		ATCO									1		3					1					
		LITTER			3.5				1.0				2										.1
		ARTR			9.5		1		15.5				15					1					.1
		LITTER			6				15				4					.1					.1
		ELSA		1	2				3.5		1		3					.25					
		ARTR			2																		
		LITTER			3				1				2					.1					.1

PART II - SUMMARY OF PLOT DATA							PART III - PLOT DIAGRAM			
LIST BY SPECIES (a)	NUMBER		1/16 SQ. FT. UNITS (estimate) (d)	TOTAL SQ. IN. (measurement) (e)	PERCENT					
	MATURE PLANTS (b)	SEED-LINGS (c)			COVER (f)	COMPOSITION (g)				
Grasses (Basal Cover)										
POA	2		1.75		.44	2.04				
SINY	1		1.00		.25	1.16				
ELSA	1		2.25		.56	2.60				
TOTAL										
Forbs (Basal Cover)										
TOTAL										
Browse (Foliage Cover)										
CELA	2		3.00		.75	3.48				
ARTR	3		67.75		16.94	78.54				
ATCO	2		9.50		2.38	11.03				
ARSP	1		1.00		.25	1.16				
TOTAL					21.57	100				
Litter			34.05		8.51					
PLOT TOTAL					30.08					

PART IV - TREND INDEX SUMMARY	
Composition, Key Species (percent)	89.3
Cover, Live Vegetation (percent)	21.6
Seedlings, Key Species (number)	0
Litter, Plot Total (percent)	8.5
TOTAL	119.4

GENERAL INSTRUCTIONS

Print one legible copy in field for each trend plot. File with Range Trend Plot Location Data (Form 4412-24) and photographs (see Bureau Manual 4115).

SPECIFIC INSTRUCTIONS

(Items not listed are self-explanatory)

PART I - PLOT DATA BY SQUARE FOOT SECTION

Record data for each 1' x 1' section of the plot

- Column (a) - Use four letter plant symbol
- Columns (b) & (c) - Enter number
- Column (d) - Estimate - 1/16 sq. feet units covered by specie
- Column (e) - Measure - Total sq. inches covered by specie

Note: Use either estimate or measurement for each species. Do not use both.

Total - Total data for each specie and enter (Part - II)

Key Species

- ELSA
- ARTR
- ARSP
- CELA

PART II - SUMMARY OF PLOT DATA

Column (e) - Measurement - $\frac{\text{Measured sq inches (Column (e))}}{1296 (3' \times 3' \text{ plot}) \text{ or } 3600 (5' \times 5' \text{ plot})} \times 100 = \text{cover}$

Column (f) - Estimate - Multiply Column (d) by 0.7 (3' x 3' plot) or 0.25 (5' x 5' plot)

Column (g) - Composition - $\frac{\text{Cover (Column (f)) of specie}}{\text{Total cover (of plot in Column (f))}} \times 100 = \text{percent composition}$

119.4 / 101.6 x 100 = 117.5%

UNITED STATES
 DEPARTMENT OF THE INTERIOR
 BUREAU OF LAND MANAGEMENT

District
 SALT LAKE
 Resource Area
 PONY EXPRESS
 Date and Time 12:30 6-15-83
 Examiner
 Royce

RANGE TREND PLOT DATA

Allotment Name
 WEST GRASSY

NUMBER	
ALLOTMENT	PLOT
	02

PART I - PLOT DATA BY SQUARE FOOT SECTION

SPECIES			MATURE PLANTS	SEEDLINGS	1/16 UNITS	TOTAL SQ. INCHES	MATURE PLANTS	SEEDLINGS	1/16 UNITS	TOTAL SQ. INCHES	MATURE PLANTS	SEEDLINGS	1/16 UNITS	TOTAL SQ. INCHES	MATURE PLANTS	SEEDLINGS	1/16 UNITS	TOTAL SQ. INCHES	MATURE PLANTS	SEEDLINGS	1/16 UNITS	TOTAL SQ. INCHES		
GRASS	FORB	BROWSE																						
(a)	(b)	(c)	(d)	(e)	(b)	(c)	(d)	(e)	(b)	(c)	(d)	(e)	(b)	(c)	(d)	(e)	(b)	(c)	(d)	(e)	(b)	(c)	(d)	(e)
ELSA			1		7.0				.5															
	ARTR				5.0				3.3		1		7.5											
BRTF							2		.1		10		.5		2		.10		2			.10		
POSE							2		.2															
LITTER					1.0				1.0				.5				.5					.1		
BRTF			40		20						10		.50											
	ARTR				90		1		15				.25											
POSE							2		.1		1		.10											
SIMY							1		.1															
STONE																								
LITTER					20				.1				1.0				.25					.3		
BRTF			10		50		2		9.5		1		2.3				20							
	CELA				10		1		10.0		1		.3		2		.1		2			.1		
	ATCO										1		2.0											
SIMY											2		1.0											
POSE											1		1.0											
LITTER					.5				1.0				1.0				.5					.1		
BRTF			2		.1		2		.1		2		.1									.1		
	ATCO												2.2				.2							
	ARSP										1		2.0											
	ARTR								.3															
	CELA				1.0		1		1.0															
LITTER					.3				.5				1.0				.1					.1		
BRTF					1.0				1.0										1			.3		
POSE			2		.1														1			.2		
	ARTR																					.2		
LITTER					.2				.1				.1				.1					.5		

U.S. DEPARTMENT OF THE INTERIOR
 BUREAU OF LAND MANAGEMENT
 SOIL-VEGETATION INVENTORY METHOD
 ***** SVIM *****
 TRANSECT DATA SHEET

RECORD TYPE (1) V 1
 FORMAT CODE (2) D
 BLM ADMIN UNIT (ST/DI/RA/PU). (3) UTSL PERA
 ALLOTMENT (4) | | | | | WEST GRASSY
 PASTURE (5) | | | | | SOUTH
 SITE WRITEUP AREA (SWA) . . . (6) | | | | |
 TRANSECT NUMBER (7) | | | | | Plot #2
 COMPARISON AREA (8) | | | | |
 DATE (YYMMDD) (9) 830615
 ACTION CODE (A,D) (10) | | | | |

(11)
 AERIAL PHOTO

(12)
 RECORDER

Royce

(13) GROUND COVER DATA				(14) HITS	(15) PLANT LIST			(16) SOIL FACTOR ITEMS	(16) RATING
BASAL	DOT COUNT				SYMBOL	SYMBOL	SYMBOL		
BARE GROUND	[X] [X] } 2220			19				SOIL MOVEMENT	
PERSISTENT LITTER	[.] [.] [.] } (20)			4				SURFACE LITTER	
NON-PERSISTENT LITTER	[.] [.] [.]			2				SURFACE ROCK	
GRAVEL (2mm - 3")	[.] [.] [.]			1				PEDESTALLING	
COBBLE (3" - 10")	[.] [.] [.]			2				FLOW PATTERNS	
STONE (> 10")								RILLS	
BEDROCK								GULLIES	

(17) SOIL SURFACE FACTOR TOTAL

(18) LEVEL OF TRANSECT HIT					(19) HITS	(18) LEVEL OF TRANSECT HIT					(19) HITS
BASAL	CANOPY 1	CANOPY 2	CANOPY 3	DOT COUNT		BASAL	CANOPY 1	CANOPY 2	CANOPY 3	DOT COUNT	
ARTR				[.]	6						
BRTE			[X] [X]	[X] [X] [X] [X]	61						
ATCO				[.]	1					7220	
ELSA				[.]	1						
ORHY				[.]	1						
CELA				[.]	1						
SIHY				[.]	1						

(Continued on reverse)

ABCDEFGHIJKLMNØPQRSTUVWXYZ 1234567890





1981 & 1976

READINGS # 4&3

PLOT # 2

UNITED STATES
 DEPARTMENT OF THE INTERIOR
 BUREAU OF LAND MANAGEMENT

District

Resource Area

Pony Express

Date and Time 9-2-81 1:00pm

Examiner

Kidd

RANGE TREND PLOT DATA

Allotment Name

West Grassy

NUMBER

ALLOTMENT

PLOT

South

2

PART I - PLOT DATA BY SQUARE FOOT SECTION

SPECIES			MATURE PLANTS	SEEDLINGS	1/16 UNITS	TOTAL SQ. INCHES	MATURE PLANTS	SEEDLINGS	1/16 UNITS	TOTAL SQ. INCHES	MATURE PLANTS	SEEDLINGS	1/16 UNITS	TOTAL SQ. INCHES	MATURE PLANTS	SEEDLINGS	1/16 UNITS	TOTAL SQ. INCHES	MATURE PLANTS	SEEDLINGS	1/16 UNITS	TOTAL SQ. INCHES
GRASS	FORB	BROWSE																				
(a)	(a)	(a)	(b)	(c)	(d)	(e)	(b)	(c)	(d)	(e)	(b)	(c)	(d)	(e)	(b)	(c)	(d)	(e)	(b)	(c)	(d)	(e)
	LITTER																					
	LITTER																					
	LITTER																					
	LITTER																					
	LITTER																					

PART II - SUMMARY OF PLOT DATA							PART III - PLOT DIAGRAM		
LIST BY SPECIES (a)	NUMBER		1/16 SQ. FT. UNITS (estimate) (d)	TOTAL SQ. IN. (measurement) (e)	PERCENT				
	MATURE PLANTS (b)	SEED-LINGS (c)			COVER (f)	COMPOSITION (g)			
Grasses (Basal Cover)									
El sa	2		6		1.5	11.1			
po se	6	2							
si hy	2								
TOTAL									
Forbs (Basal Cover)									
TOTAL									
Browse (Foliage Cover)									
Ar no	3		38		9.5	70.4			
At co	1		4		1	7.5			
Eula	3		4		1.5	7.5			
Ar sp	1		2		1.5	3.7			
TOTAL	8								
Litter					1				
PLOT TOTAL									

PART IV - TREND INDEX SUMMARY	
Composition, Key Species (percent)	92.49
Cover, Live Vegetation (percent)	1813.5
Seedlings, Key Species (number)	
Litter, Plot Total (percent)	1
TOTAL	11103.5

Key species El sa
Ar no
Ar sp
Eula

GENERAL INSTRUCTIONS

Print one legible copy in field for each trend plot. File with Range Trend Plot Location Data (Form 4412-24) and photographs (see Bureau Manual 4115).

SPECIFIC INSTRUCTIONS

(Items not listed are self-explanatory)

PART I - PLOT DATA BY SQUARE FOOT SECTION

Record data for each 1' x 1' section of the plot

- Column (a) - Use four letter plant symbol
- Columns (b) & (c) - Enter number
- Column (d) - Estimate - 1/16 sq. feet units covered by specie
- Column (e) - Measure - Total sq. inches covered by specie
- Note: Use either estimate or measurement for each species. Do not use both.
- Total - Total data for each specie and enter (Part - II)

PART II - SUMMARY OF PLOT DATA

Column (e) - Measurement - $\frac{\text{Measured sq inches (Column (e))}}{1296 (3' \times 3' \text{ plot}) \text{ or } 3600 (5' \times 5' \text{ plot})} \times 100 = \text{cover}$

Column (f) - Estimate - Multiply Column (d) by 0.7 (3' x 3' plot) or 0.25 (5' x 5' plot)

Column (g) - Composition - $\frac{\text{Cover (Column (f)) of specie}}{\text{Total cover (of plot in Column (f))}} \times 100 = \text{percent composition}$

55F 8
8
8
9
8
8
8
8
(57)
High moderate
(128.1)

103.5
19.6 = 102.7

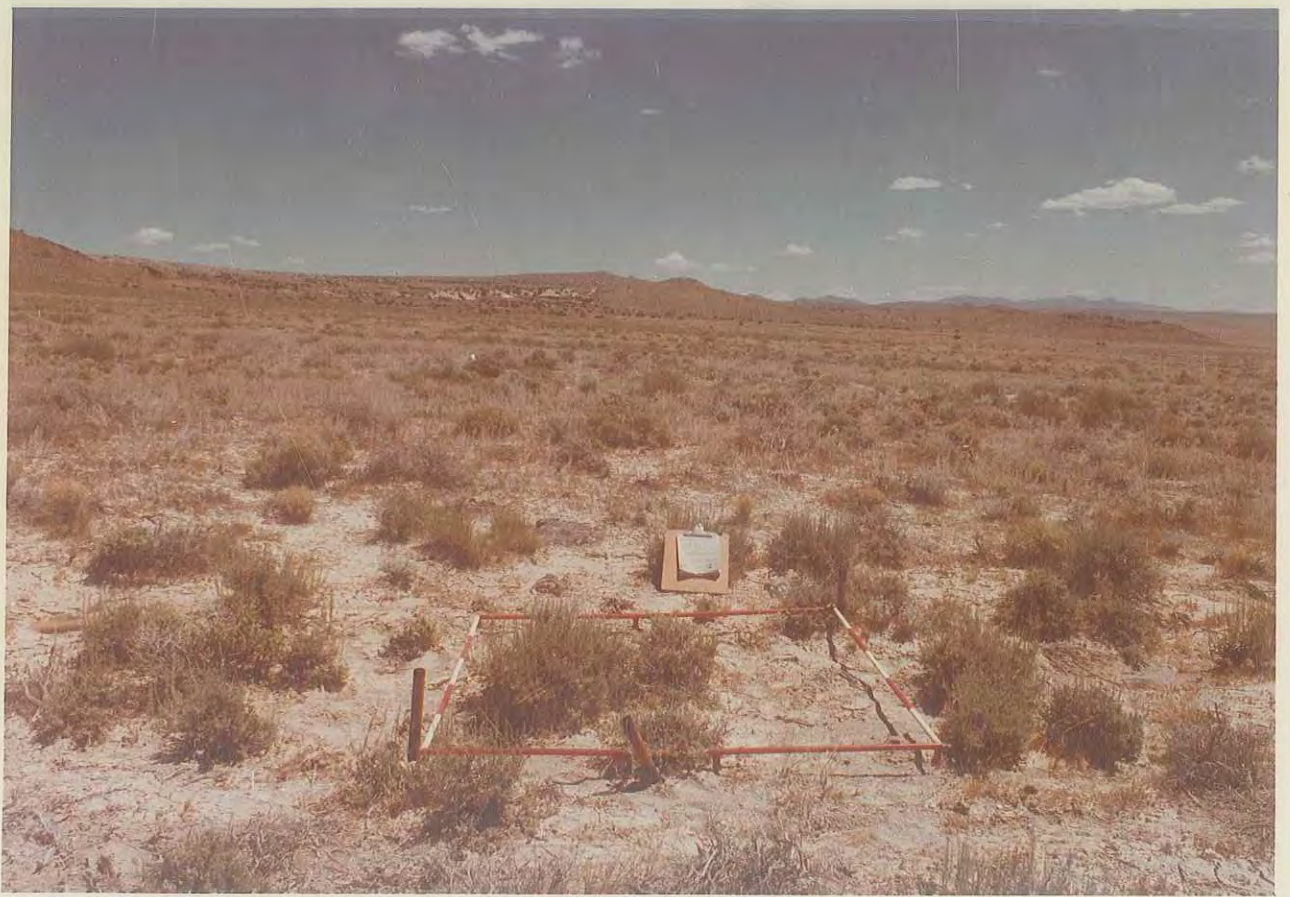


DATE 9-281
DIST Salt Lake
West
ALLOT Grassy
PASTURE South
PLOT NO. 2



DATE 9-281
DIST Salt Lake
West
ALLOT Grassy
PASTURE South

TRANSECT 2
June 9, 1976



TRANSECT 2
Sept. 2, 1981

1970 & 1969

READINGS # 2&1

PLOT # 2

UNITED STATES
DEPARTMENT OF THE INTERIOR
BUREAU OF LAND MANAGEMENT

District Salt Lake
Date 8/17/70
Examiner J. Perkins

RANGE TREND PLOT DATA

Allotment <u>Diamond - T</u>	Pasture <u>North</u>	Key Species <u>Eula</u>	Elevation
Grazing System <u>deferred rotation</u>	PLOT		Slope
Treatment <u>()</u>	Number <u>2</u>	Size <u>5x5</u>	<u>3%</u>
	Vegetative Type <u>Sage-grass</u>	<u>Eula</u>	Exposure <u>SW</u>

LIST BY SPECIES (a)	NUMBER		1/16 SQ. FT. UNITS (estimate) (d)	TOTAL SQ. IN. (measure- ment) (e)	PERCENT		SIZE OF INDIVIDUAL PLANTS (A = TT ab) (h)
	MATURE PLANTS (b)	SEED- LINGS (c)			COVER (f)	COMPO- SITION (g)	
Grasses (Basal Cover)							
<u>Pose</u>	<u>4</u>		<u>1</u>		<u>.25</u>	<u>1.6</u>	<u>--</u>
<u>Eula</u>	<u>1</u>		<u>1</u>		<u>.25</u>	<u>1.6</u>	<u>1</u>
TOTAL							
Forbs (Basal Cover)							
TOTAL							
Browse (Foliage Cover)							
<u>Arno</u>	<u>4</u>		<u>45</u>		<u>11.25</u>	<u>73.8</u>	<u>3 20--11</u>
<u>Eula</u>	<u>3</u>		<u>5</u>		<u>1.25</u>	<u>8.2</u>	<u>3-1-</u>
<u>Arso</u>	<u>3</u>		<u>4</u>		<u>1.00</u>	<u>6.4</u>	<u>2</u>
<u>Atco</u>	<u>1</u>		<u>5</u>		<u>1.25</u>	<u>8.0</u>	<u>3-</u>
TOTAL							
Litter			<u>6</u>		<u>1.50</u>		<u>-2 12-</u>
PLOT TOTAL					<u>16.75</u>	<u>100</u>	

Comments

TREND INDEX SUMMARY

Composition, Key Species (percent)	<u>83.6</u>
Cover, Live Vegetation (percent)	<u>15.25</u>
Seedlings, Key Species (number)	<u>0</u>
Litter, Plot Total (percent)	<u>1.50</u>
TOTAL	<u>100.35</u>

$$\frac{100.35}{101.6} = 99\%$$

SPECIFIC INSTRUCTIONS

Column

- (d) Each 1/16 sq. ft. unit = 0.7 percent, 3 × 3 ft. plot; 0.25 percent, 5 × 5 ft. plot
- (h) Record length and breadth - Divide by 2 for major and minor radii
1. Circle understory plants
 2. Do not use understory plants in computing cover
 3. In Trend Index Summary, cover live vegetation may be either total plot cover or cover of key species only

GENERAL INSTRUCTIONS

APPARENT TREND DATA

On-site Analysis (write concise narration of items listed below)

1. Soil stability, active erosion
2. Relative plant composition:
 - a. desirable vs. undesirable
 - b. protected vs. unprotected
3. Vigor - size, number of culms, growth, seedheads, etc
4. Reproduction
5. Evidence of grazing - past and present
6. Apparent trend

Revisitation Analysis

Compare with previous analysis. Note change in species, soil cover, litter, amount of erosion, etc. Use extra sheets, if necessary.

Same analysis as plot #1.

412-19
May 1968)

UNITED STATES
DEPARTMENT OF THE INTERIOR
BUREAU OF LAND MANAGEMENT

District
SALT LAKE
Date
8/12/69
Examiner
CARPENTER, PERKINS

RANGE TREND PLOT DATA

Allotment <u>Diamond T.</u>	Pasture <u>North</u>	Key Species <u>EUA</u>	Elevation
Grazing System <u>DEFERRED ROTATION</u>	PLOT Number <u>2</u> Size <u>5'x5'</u>		Slope <u>3%</u>
Treatment	Vegetative Type <u>SAGEBRUSH - GRASS</u>	<u>EUA</u>	Exposure <u>SOUTH WEST</u>

LIST BY SPECIES (a)	NUMBER		1/16 SQ. FT. UNITS (estimate) (d)	TOTAL SQ. IN. (measure- ment) (e)	PERCENT		SIZE OF INDIVIDUAL PLANTS (A = TT ab) (h)
	MATURE PLANTS (b)	SEED- LINGS (c)			COVER (f)	COMPO- SITION (g)	
Grasses (Basal Cover)							
<u>Poa Sandberg Blue grass</u> 3			<u>1 1/2</u>		<u>.125</u>	<u>2.7</u>	
<u>Elyon Saline Wild Rye</u> 1			<u>1 1/2</u>		<u>.375</u>	<u>7.2</u>	
TOTAL			<u>2</u>				
Forbs (Basal Cover)							
TOTAL							
Browse (Foliage Cover)							
<u>Artem Black Sage</u> 4			<u>47 1/2</u>		<u>11.875</u>	<u>70.7</u>	<u>13-23-19 1/2</u> <u>26.6</u>
<u>Elyon Winter Fat</u> 3			<u>8</u>		<u>2</u>	<u>11.9</u>	<u>3-2-4</u> <u>20</u>
<u>Artem Bud Sage</u> 3			<u>4</u>		<u>1</u>	<u>5.9</u>	<u>8-2-15</u> <u>20</u>
<u>Artem Shad Sage</u> 1			<u>6</u>		<u>1.5</u>	<u>8.1</u>	<u>4-2</u> <u>6.7</u>
TOTAL			<u>65.5</u>		<u>16.875</u>	<u>100.0</u>	<u>73.3</u>
Litter							
PLOT TOTAL							

Comments

TREND INDEX SUMMARY

Composition, Key Species (percent)	<u>84.8</u>
Cover, Live Vegetation (percent)	<u>16.8</u>
Seedlings, Key Species (number)	
Litter, Plot Total (percent)	
TOTAL	<u>101.6</u>

101.6
101.6 = 100%

UNITED STATES
DEPARTMENT OF THE INTERIOR
BUREAU OF LAND MANAGEMENT

District

Salt Lake

Date

3-26-69

Examiner

Decker King

RANGE TREND PLOT DATA

Allotment <i>Diamond T Livestock Co.</i>	Pasture <i>North</i>	Key Species <i>Arno</i>	Elevation <i>5000</i>
Grazing System <i>Deferred Grazing</i>	PLOT Number <i>2</i> Size <i>5'</i>		Slope <i>3%</i>
Treatment <i>Grazed</i>	Vegetative Type <i>13(4) Atco Arno Elsa</i>	<i>Elsa</i>	Exposure <i>Southwest</i>

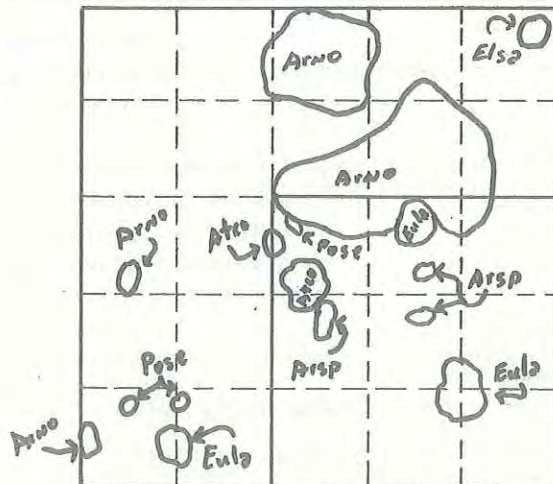
LIST BY SPECIES (a)	NUMBER		1/16 SQ. FT. UNITS (estimate) (d)	TOTAL SQ. IN. (measure- ment) (e)	PERCENT		SIZE OF INDIVIDUAL PLANTS (A = TT ab) (h)
	MATURE PLANTS (b)	SEED- LINGS (c)			COVER (f)	COMPO- SITION (g)	
Grasses (Basal Cover)							
<i>Pose</i>	<i>3</i>		<i>1</i>				
<i>Elsa</i>	<i>1</i>		<i>1</i>				
TOTAL							
Forbs (Basal Cover)							
<i>NONE</i>							
TOTAL							
Browse (Foliage Cover)							
<i>Arno</i>	<i>3</i>	<i>1</i>	<i>48</i>				
<i>Eula</i>	<i>3</i>		<i>4</i>				
<i>Arsp</i>	<i>3</i>		<i>3</i>				
<i>Atco</i>	<i>1</i>	<i>1</i>	<i>4</i>				
TOTAL	<i>14</i>	<i>2</i>	<i>61</i>				
Litter							
PLOT TOTAL							

Comments

Plot is located 74 paces north of N 1/4 cor. of Sec. 1 T. 2N R. 11W. There is a green steel post at the 1/4 corner.

TREND INDEX SUMMARY

Composition, Key Species (percent)	
Cover, Live Vegetation (percent)	
Seedlings, Key Species (number)	
Litter, Plot Total (percent)	
TOTAL	





TRANSECT 2

Sept 17, 1969

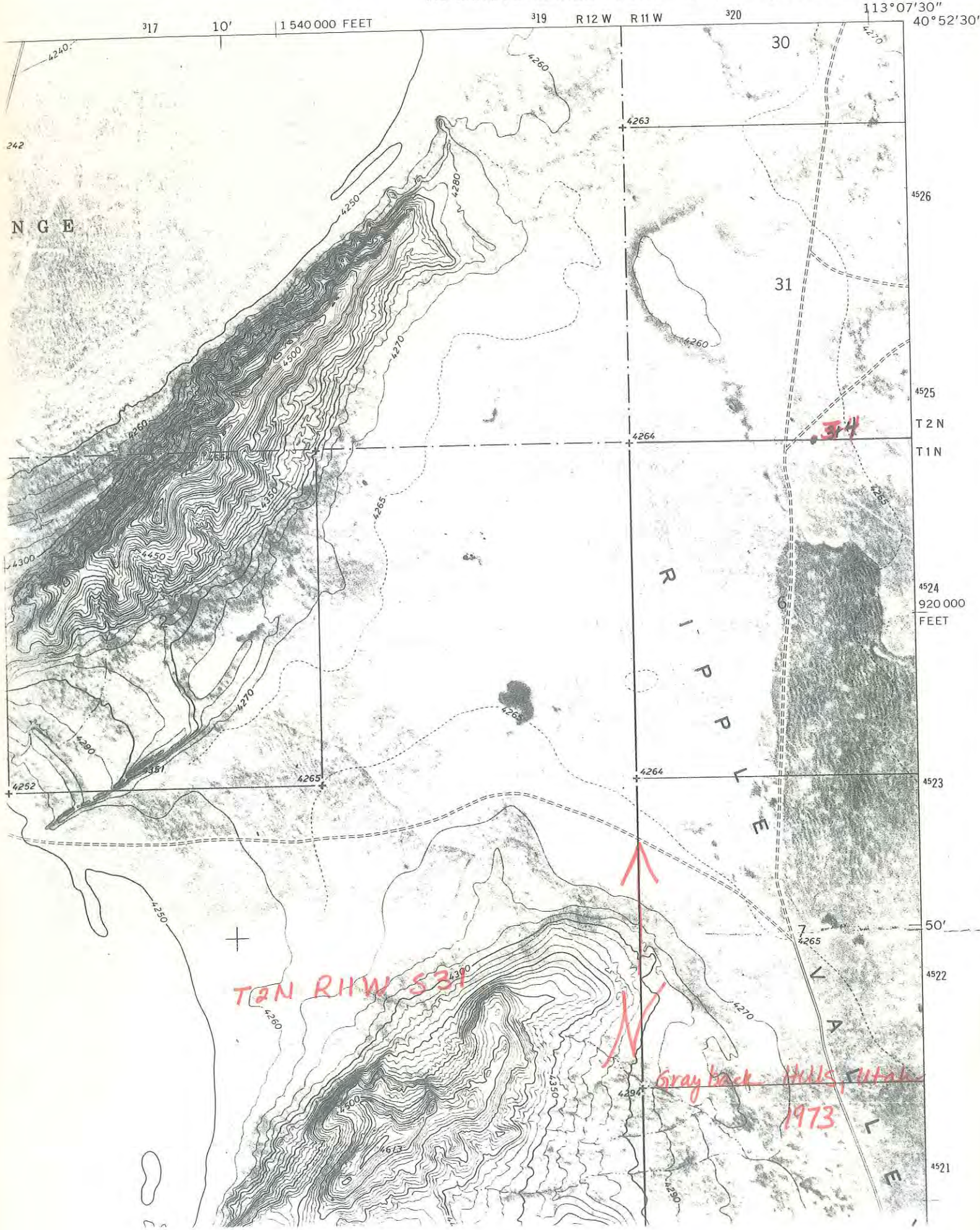


TRANSSECT 2
August 17, 1970

8/17/70

GRAYBACK HILLS QUADRANGLE
UTAH-COOLE CO.
7.5 MINUTE SERIES ORTHO TMAP (TOPOGRAPHIC)

GRASSY



WEST GRASSY

Range Study #1

The plot is 46 paces southeast of $N\frac{1}{4}$ corner of Section 1, T. 1 N., R. 11 W.
A green, steel post marks the $\frac{1}{4}$ corner peg.

Range Study #2

The plot is 74 paces north of $N\frac{1}{4}$ corner of Section 1, T. 1 N., R. 11 W.
A green, steel post marks $\frac{1}{4}$ corner.

Range Study #3

The study is located .2 miles due east of $N\frac{1}{4}$ corner of Section 6,
T. 1 N., R. 11 W.. Plot #3 is 20 paces north of red, steel post.

Range Study #4

Same procedure as #3. Plot #4 is 20 paces south of red, steel post.

Range Study #5

The plot is 23 steps east of the NW section corner of Section 6, T. 1 N.,
R. 10 W.. The section corner is marked by a red, steel post.

Range Study #6

The plot is 33 steps north of the SW section corner of Section 31, T. 2 N.,
R. 10 W.. The section corner is marked by a red, steel post.

Range Study #7

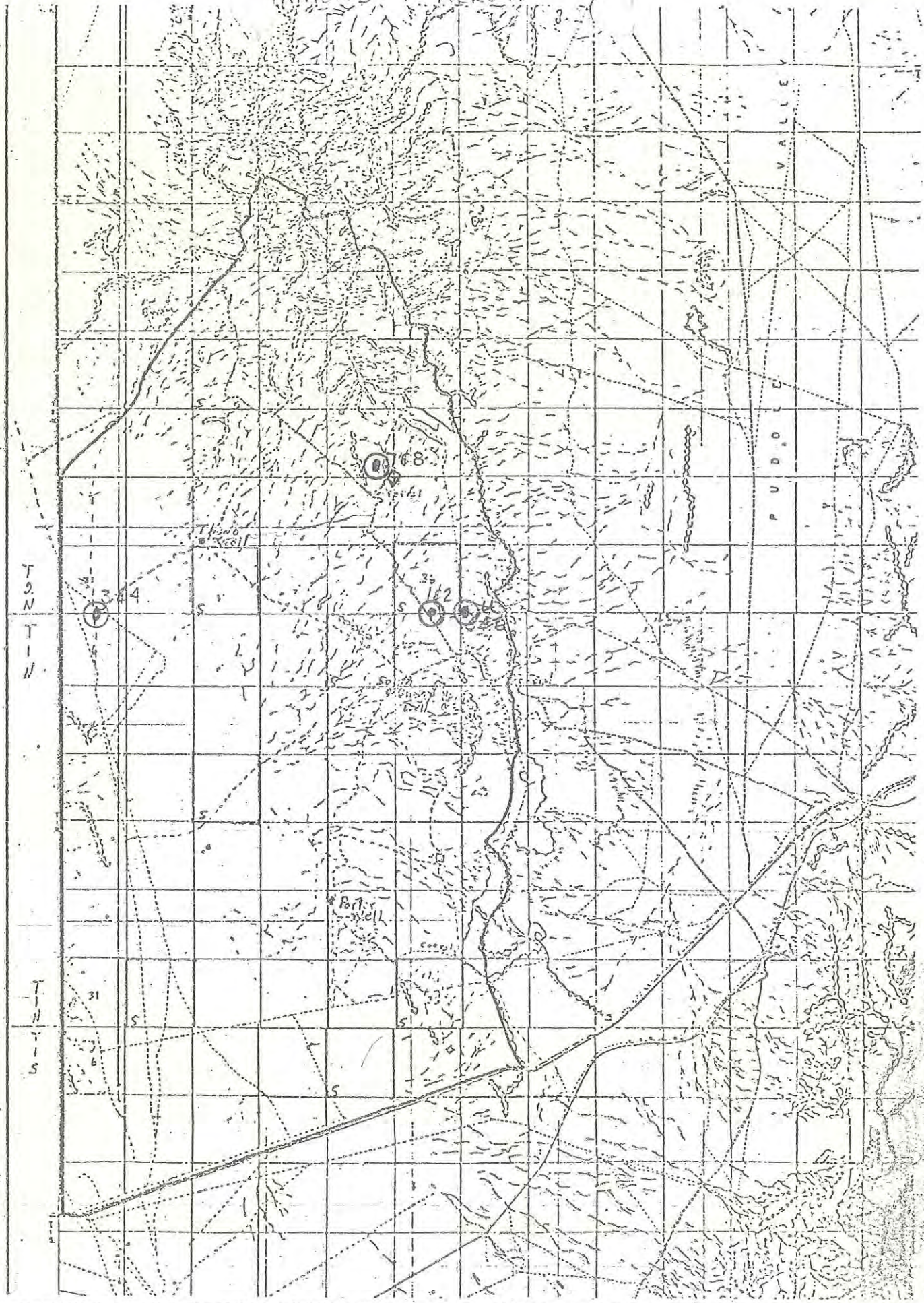
From study plots 1 and 2, follow the road northeast for ^{3 1/2} miles to an
old corral. Then, north $1\frac{1}{2}$ mile to a red, steel post on the side of the
road. The plot is 51 steps easterly from the red post.

Range Study #8

Same procedure as #7. Plot is 51 steps westerly from the red post.

Handwritten notes and stamps in the bottom right corner, including "M S" and "17 12 22 2 507 10".

DIAMOND-T. ALLOT



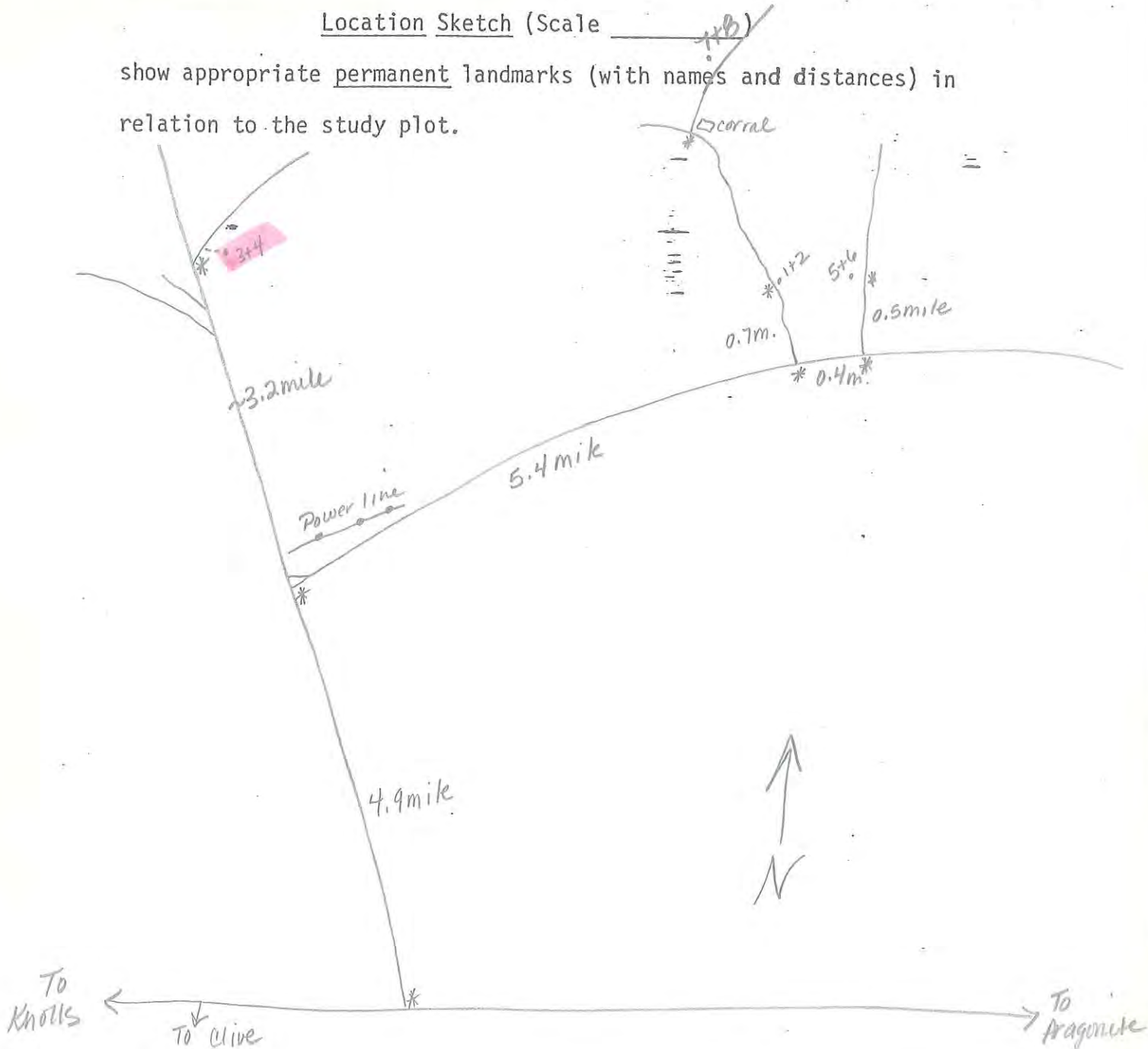
U Utilization Case O - RANGE STUDY PLOTS

Key Area Location

District Salt Lake Date 7-24-89
Allotment West Grassy Aerial Photo # _____
Prepared by K. Snyder or 7½' Quad Ripple Valley - Gray Back Hills -
or Orthophoto Grassy Mtns.
Photo or Map Date 1973-1973-1973

Location Sketch (Scale _____)

show appropriate permanent landmarks (with names and distances) in relation to the study plot.



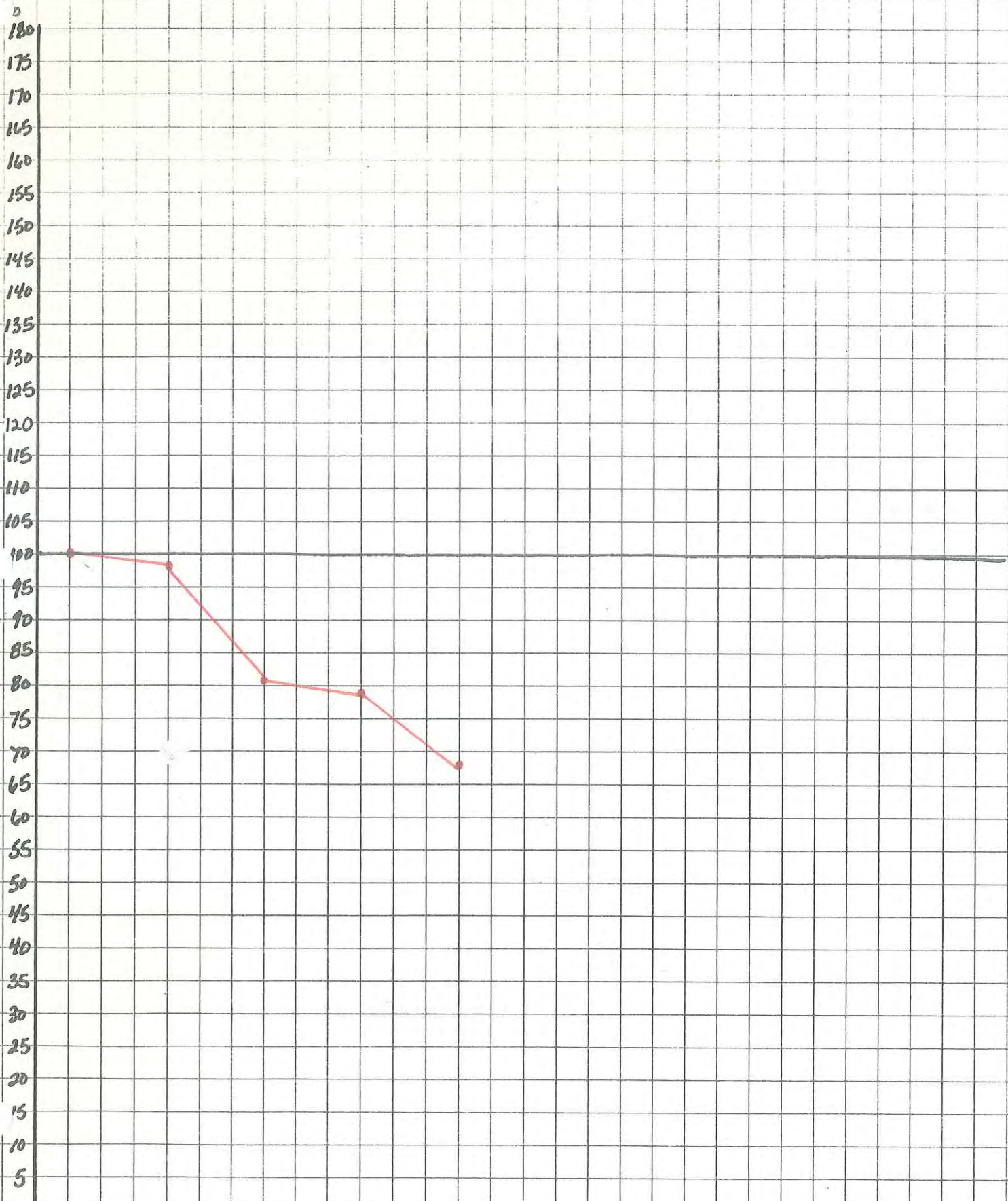
ALLOTMENT DATE PLOT	WEST GRASSY 8/12/1969 WG-3		LOCATION T2N R11W SEC. 31		TREND INDEX SUMMARY Composition, Key Species Cover, Live Vegetation Seedlings, Key Species Litter, Plot Total TOTAL
	NUMBER Mature	NUMBER Seedlings	1/16 SQ. FT. UNITS	PERCENT Cover	
Grasses (basal cover)				Composition	100
					30
					0
					0
					0
					130
TOTAL	0	0	0	0	0
Forbs (basal cover)					
TOTAL	0	0	0	0	0
Browse (foliage cover)					
ATCO	24		119	29.75	98.3
KOAM	2		2	0.5	1.7
TOTAL	26	0	121	30.25	100
LITTER					
PLOT TOTAL	26	0	121	30.25	100

ALLOTMENT	WEST GRASSY		LOCATION				
DATE	6/16/1983		T2N R11W SEC. 31				
PLOT	WG-3						
List by Species	NUMBER		1/16 SQ. FT. UNITS	PERCENT		TREND INDEX SUMMARY	
	Mature	Seedlings		Cover	Composition	Composition, Key Species	Seedlings, Key Species
Grasses (basal cover)							
BRTE	11		1.1	0.3	1.5		59
	1						26.4
							7
							12.5
							104.9
TOTAL	12	0	1.1	0.3	1.5		
Forbs (basal cover)							
LEPID	2		1.4	0.4	1.5		
HAGL	138		39.5	10	38		
TOTAL	140	0	40.9	10.4	39.5		
Browse (foliage cover)							
ATCO	10	7	50.8	12.7	48		
KOAM	1		12	3	11		
TOTAL	11	7	62.8	15.7	59		
LITTER			50.1	12.5			
PLOT TOTAL	163	7	104.8	38.9	100		

ALLOTMENT	WEST GRASSY		LOCATION			
	DATE					
	7/24/1989		T2N R11W SEC. 31			
PLOT	WG-3					
List by Species	NUMBER		1/16 SQ. FT UNITS	PERCENT		TREND INDEX SUMMARY
	Mature	Seedlings		Cover	Composition	
Grasses (basal cover)						Composition, Key Species Cover, Live Vegetation Seedlings, Key Species Litter, Plot Total
						69.26 8 8 3.55 88.81
TOTAL	0	0	0	0	0	
Forbs (basal cover)						
TOTAL	0	0	0	0	0	
Browse (foliage cover)						
KOAM	4	8	12	3	25.97	
ATCO	2		20	5	43.29	
TOTAL	6	8	32	8	69.26	
LITTER			14.2	3.55		
PLOT TOTAL	6	8	32	11.55	69.26	

West Grassy - 03

Trend Index Summary by Percent

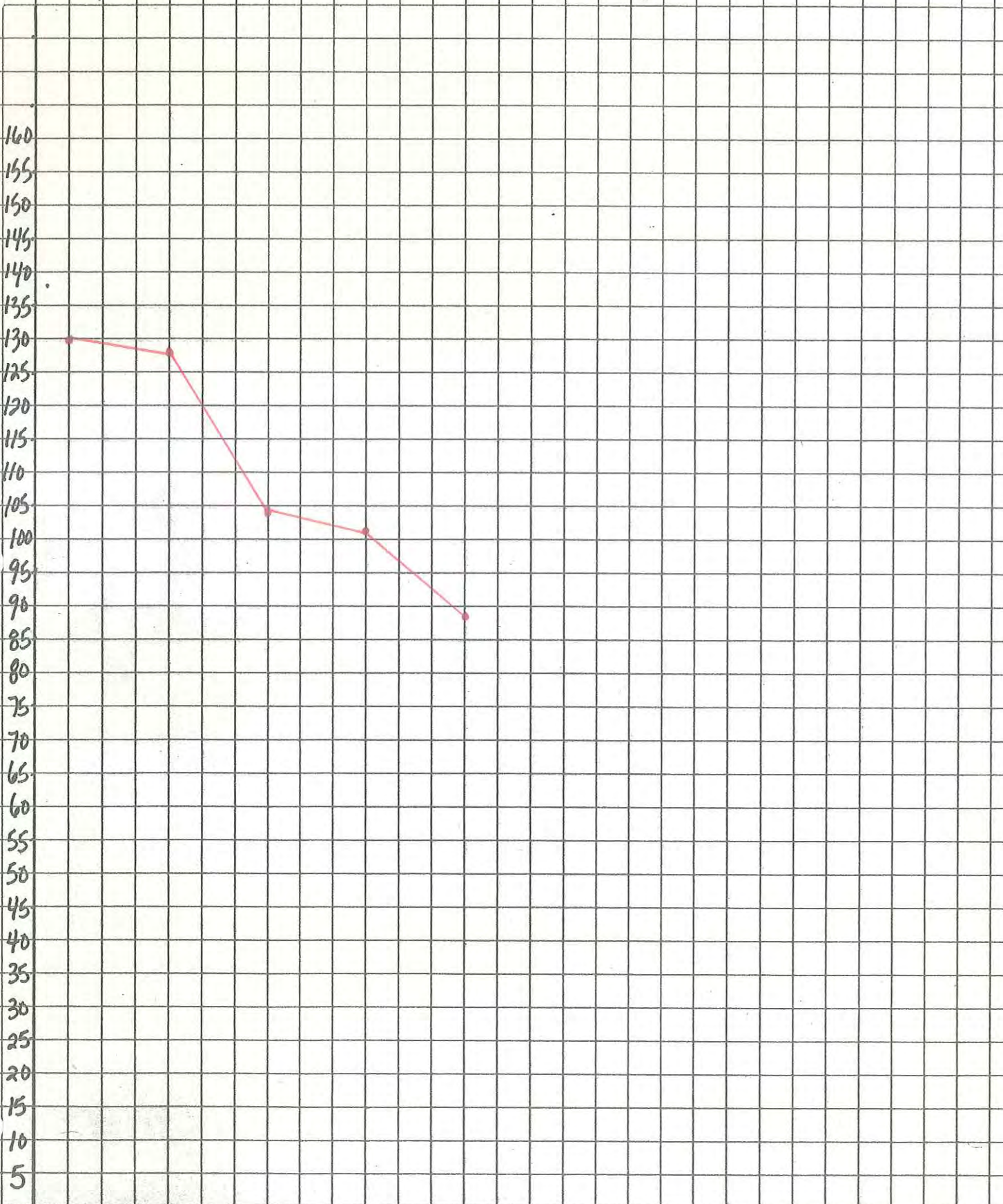


YEAR	69	70	83	85	89
TOTAL %	100	98	81	79	68

West Grassy - 03

Trend Index Summary

160
155
150
145
140
135
130
125
120
115
110
105
100
95
90
85
80
75
70
65
60
55
50
45
40
35
30
25
20
15
10
5



YEAR	69	70	83	85	89
TOTAL	130	127.6	104.9	102.3	88.8

1989 & 1985

READINGS # 6&5

PLOT # 3

TREND STUDIES WRITE-UP

EXAMINER and others present: K. Snyder

ALLOTMENT AND SITE NUMBER: West Grassy - 03

DATE: 7-24-87

TIME: 12:45

SLOPE: Flat

CAMERA LENS: 28m

COMMENTS:

UNITED STATES
DEPARTMENT OF THE INTERIOR
BUREAU OF LAND MANAGEMENT

RANGE TREND PLOT DATA

District *Salt Lake*
Resource Area *Pony Express*
Date and Time *7-24-89 12:45*
Examiner *K. Snyder*

Allotment Name

West Grassy

NUMBER

ALLOTMENT

PLOT

03

PART I - PLOT DATA BY SQUARE FOOT SECTION

SPECIES			MATURE PLANTS	SEEDLINGS	1/16 UNITS	TOTAL SQ. INCHES	MATURE PLANTS	SEEDLINGS	1/16 UNITS	TOTAL SQ. INCHES	MATURE PLANTS	SEEDLINGS	1/16 UNITS	TOTAL SQ. INCHES	MATURE PLANTS	SEEDLINGS	1/16 UNITS	TOTAL SQ. INCHES	MATURE PLANTS	SEEDLINGS	1/16 UNITS	TOTAL SQ. INCHES			
GRASS	FORB	BROWSE																							
(a)	(b)	(c)	(d)	(e)	(b)	(c)	(d)	(e)	(b)	(c)	(d)	(e)	(b)	(c)	(d)	(e)	(b)	(c)	(d)	(e)	(b)	(c)	(d)	(e)	
	<i>KOAM</i>		<i>1</i>		<i>1</i>																				
	<i>ATLO</i>							<i>3</i>																	
	LITTER				<i>T</i>			<i>2</i>				<i>.5</i>					<i>.5</i>						<i>1</i>		
	<i>ATLO</i>					<i>1</i>		<i>5</i>				<i>1</i>										<i>1</i>		<i>2.5</i>	
	<i>KOAM</i>																								
	LITTER				<i>T</i>			<i>.2</i>				<i>T</i>					<i>1</i>					<i>1</i>			
	<i>ATLO</i>											<i>1</i>					<i>11</i>					<i>1</i>		<i>5</i>	
	<i>KOAM</i>		<i>5</i>	<i>1</i>																					
	LITTER				<i>T</i>			<i>T</i>				<i>T</i>					<i>2</i>						<i>3</i>		
	<i>KOAM</i>		<i>1</i>		<i>1</i>																				
	LITTER				<i>1</i>			<i>.5</i>				<i>T</i>					<i>T</i>						<i>.5</i>		
	<i>KOAM</i>		<i>1</i>	<i>.5</i>							<i>1</i>	<i>.5</i>				<i>1</i>	<i>.5</i>								
	LITTER				<i>T</i>			<i>.5</i>				<i>T</i>					<i>T</i>						<i>.5</i>		

PART II - SUMMARY OF PLOT DATA							PART III - PLOT DIAGRAM			
LIST BY SPECIES (a)	NUMBER		1/16 SQ. FT. UNITS (estimate) (d)	TOTAL SQ. IN. (measurement) (e)	PERCENT					
	MATURE PLANTS (b)	SEED-LINGS (c)			COVER (f)	COMPO-SITION (g)				
Grasses (Basal Cover)										
TOTAL										
Forbs (Basal Cover)										
TOTAL										
Browse (Foliage Cover)										
KoAM	4	8	12		3	25.97				
ATCO	2		20		5	43.29				
TOTAL					8					
er			14.2		3.55					
PLOT TOTAL					11.55					
							PART IV - TREND INDEX SUMMARY			
							Composition, Key Species (percent)	69.26		
							Cover, Live Vegetation (percent)	8		
							Seedlings, Key Species (number)	8		
							Litter, Plot Total (percent)	3.55		
							TOTAL	88.81		

$$\frac{88.81}{130} \times 100 = 68.90$$

GENERAL INSTRUCTIONS

Print one legible copy in field for each trend plot. File with Range Trend Plot Location Data (Form 4412-24) and photographs (see Bureau Manual 4115).

SPECIFIC INSTRUCTIONS

(Items not listed are self-explanatory)

PART I - PLOT DATA BY SQUARE FOOT SECTION

Record data for each 1' x 1' section of the plot

- Column (a) - Use four letter plant symbol
- Columns (b) & (c) - Enter number
- Column (d) - Estimate - 1/16 sq. feet units covered by specie
- Column (e) - Measure - Total sq. inches covered by specie
- Note: Use either estimate or measurement for each species. Do not use both.
- Total - Total data for each specie and enter (Part - II)

PART II - SUMMARY OF PLOT DATA

- Column (e) - Measurement - $\frac{\text{Measured sq inches (Column (e))}}{1296 (3' \times 3' \text{ plot}) \text{ or } 3600 (5' \times 5' \text{ plot})} \times 100 = \text{cover}$
- Column (f) - Estimate - Multiply Column (d) by 0.7 (3' x 3' plot) or 0.25 (5' x 5' plot)
- Column (g) - Composition - $\frac{\text{Cover (Column (f)) of specie}}{\text{Total cover (of plot in Column (f))}} \times 100 = \text{percent composition}$

UNITED STATES
DEPARTMENT OF THE INTERIOR
BUREAU OF LAND MANAGEMENT

District

Resource Area

PONY EXPRESS

Date and Time 7/8/85

Examiner ROYCE

RANGE TREND PLOT DATA

7/8/1985

Allotment Name

WEST GRASSY #3

NUMBER

ALLOTMENT

PLOT

#3

PART I - PLOT DATA BY SQUARE FOOT SECTION

SPECIES			MATURE PLANTS	SEEDLINGS	1/16 UNITS	TOTAL SQ. INCHES	MATURE PLANTS	SEEDLINGS	1/16 UNITS	TOTAL SQ. INCHES	MATURE PLANTS	SEEDLINGS	1/16 UNITS	TOTAL SQ. INCHES	MATURE PLANTS	SEEDLINGS	1/16 UNITS	TOTAL SQ. INCHES	MATURE PLANTS	SEEDLINGS	1/16 UNITS	TOTAL SQ. INCHES
GRASS	FORB	BROWSE																				
(a)	(a)	(a)	(b)	(c)	(d)	(e)	(b)	(c)	(d)	(e)	(b)	(c)	(d)	(e)	(b)	(c)	(d)	(e)	(b)	(c)	(d)	(e)
		KOAM ATCO	1		2																	
	HAGL								.10													
										.10	4										6	5
	LITTER				1				4				4								3	5
		KOAM																				1
	HAGL									2	.25	4	.25		6							.35
		ATCO					1		2.5			.5		1.5								
	LITTER				1				3				.5								2	1
	HAGL						2		.25	5		1.0										
		ATCO									1		1	7	1							5
		KOAM													1							5
	LITTER				1				2				3								5	3
	HAGL						2		.25	5		.50		3							.25	3
	LITTER				3				5				4								4	6
	HAGL									3		.5	2	.5	4							.25
		KOAM										.75										
	LITTER				3				4				.25								3	7

PART II - SUMMARY OF PLOT DATA						PART III - PLOT DIAGRAM				
LIST BY SPECIES (a)	NUMBER		1/16 SQ. FT. UNITS (estimate) (d)	TOTAL SQ. IN. (measurement) (e)	PERCENT					
	MATURE PLANTS (b)	SEED-LINGS (c)			COVER (f)	COMPOSITION (g)				
Grasses (Basal Cover)										
TOTAL										
Forbs (Basal Cover)										
HAGL	51		5.1		1.28	19.34				
TOTAL										
Browse (Foliage Cover)										
KOAM	2		8.75		2.19	33.08				
ATCO	3		12.60		3.15	47.58				
TOTAL					6.62					
Litter			60.00		15.0					
PLOT TOTAL										
						PART IV - TREND INDEX SUMMARY				
						Composition, Key Species (percent)	80.7			
						Cover, Live Vegetation (percent)	6.62			
						Seedlings, Key Species (number)	0			
						Litter, Plot Total (percent)	15.0			
						TOTAL	102.3			

GENERAL INSTRUCTIONS

$\frac{102.3}{130} \times 100 = 79\%$

Print one legible copy in field for each trend plot. File with Range Trend Plot Location Data (Form 4412-24) and photographs (see Bureau Manual 4115).

SPECIFIC INSTRUCTIONS

(Items not listed are self-explanatory)

PART I - PLOT DATA BY SQUARE FOOT SECTION

Record data for each 1' x 1' section of the plot

- Column (a) - Use four letter plant symbol
- Columns (b) & (c) - Enter number
- Column (d) - Estimate - 1/16 sq. feet units covered by specie
- Column (e) - Measure - Total sq. inches covered by specie

Note: Use either estimate or measurement for each species. Do not use both.

Total - Total data for each specie and enter (Part - II)

PART II - SUMMARY OF PLOT DATA

Column (e) - Measurement - $\frac{\text{Measured sq inches (Column (e))}}{1296 (3' \times 3' \text{ plot}) \text{ or } 3600 (5' \times 5' \text{ plot})} \times 100 = \text{cover}$

Column (f) - Estimate - Multiply Column (d) by 0.7 (3' x 3' plot) or 0.25 (5' x 5' plot)

Column (g) - Composition - $\frac{\text{Cover (Column (f)) of specie}}{\text{Total cover (of plot in Column (f))}} \times 100 = \text{percent composition}$