





CHERRY 11/10/81 10:30 AM



CHERRY 11/10/81 10:30 AM

DATE 7/9/80
DIST 5000 ft
ALLOT 1/2 acre
PASTURE N
PLOT NO.

1983 & 1976

READINGS # 4&3

PLOT # 3

UNITED STATES
 DEPARTMENT OF THE INTERIOR
 BUREAU OF LAND MANAGEMENT

District
 SALT LAKE
 Resource Area
 PONY EXPRESS
 Date and Time 6-16-83 10:30
 Examiner Roke

RANGE TREND PLOT DATA

Allotment Name West Grassy - High Moisture Year
 HAGL very plentiful

NUMBER	
ALLOTMENT	PLOT
	3

PART I - PLOT DATA BY SQUARE FOOT SECTION

SPECIES			MATURE PLANTS	SEEDLINGS	1/16 UNITS	TOTAL SQ. INCHES	MATURE PLANTS	SEEDLINGS	1/16 UNITS	TOTAL SQ. INCHES	MATURE PLANTS	SEEDLINGS	1/16 UNITS	TOTAL SQ. INCHES	MATURE PLANTS	SEEDLINGS	1/16 UNITS	TOTAL SQ. INCHES
GRASS	FORB	BROWSE																
(a)	(b)	(c)	(d)	(e)	(f)	(g)	(h)	(i)	(j)	(k)	(l)	(m)	(n)	(o)	(p)	(q)	(r)	(s)
	HAGL		15		2	4		1.0	10	40	13		2.5		20		6.0	
		ATCO						1.8					1.0					
	LITTER				1.5			7.0		1.0			2.0				1.0	
	HAGL		19		6.5	8		2.5	7	2.0	3		.8		5		1.0	
		ATCO				1	1	4.0		2.5		2	1.0		2		3.5	
		LEPID									1		.4					
BRTE									1	.1								
	LITTER				1.0			1.2		.2			1.0				1.0	
	HAGL		10		4.0	5		2.0	6	2.0								
		ATCO								4.0	2		4.0					
		KDAM											.5		1		10.0	
		LEPID													1		1.0	
	LITTER				.1			.1		2.0			1.0				2.5	
		ATCO		1	.1	1		4.5		.8			1.0		1		1.0	
		KDAM															1.0	
BRTE									2	.1								
	HAGL		3		1.0	3		1.5	1	.1								
	LITTER				2.0			5.0		1.0			7.0				1.0	
		ATCO			2.0	1		3.5			1.5		1.5				6.5	
		KDAM			.5													
BRTE						4		.5	4	.4								
	HAGL								5	.5	1		.1					
	LITTER				.5			2.5		7.0			2.0				.5	

PART II - SUMMARY OF PLOT DATA							PART III - PLOT DIAGRAM					
LIST BY SPECIES (a)	NUMBER		1/16 SQ. FT. UNITS (estimate) (d)	TOTAL SQ. IN. (measurement) (e)	PERCENT							
	MATURE PLANTS (b)	SEED-LINGS (c)			COVER (f)	COMPO-SITION (g)						
Grasses (Basal Cover)												
BRTE	11		1.1		.3	1.5						
TOTAL												
Forbs (Basal Cover)												
HAGL	136		39.5		10	38						
LEPID	2		1.4		.4	1.5						
TOTAL												
Browse (Foliage Cover)												
ATCO	10	7	50.8		12.7	48						
KOAM	1		12		3	11						
TOTAL							26.4					
Litter							50.1	12.5				
PLOT TOTAL							38.9	100.0				
							Composition, Key Species (percent)		59			
							Cover, Live Vegetation (percent)		26.4			
							Seedlings, Key Species (number)		7			
							Litter, Plot Total (percent)		12.5			
							TOTAL		104.9			

$$\frac{104.9}{130} = 81\%$$

GENERAL INSTRUCTIONS

Print one legible copy in field for each trend plot. File with Range Trend Plot Location Data (Form 4412-24) and photographs (see Bureau Manual 4115).

SPECIFIC INSTRUCTIONS

(Items not listed are self-explanatory)

PART I - PLOT DATA BY SQUARE FOOT SECTION

Record data for each 1' x 1' section of the plot

- Column (a) - Use four letter plant symbol
- Columns (b) & (c) - Enter number
- Column (d) - Estimate - 1/16 sq. feet units covered by specie
- Column (e) - Measure - Total sq. inches covered by specie

Note: Use either estimate or measurement for each species. Do not use both.

Total - Total data for each specie and enter (Part - II)

PART II - SUMMARY OF PLOT DATA

Column (e) - Measurement - $\frac{\text{Measured sq. inches (Column (e))}}{1296 (3' \times 3' \text{ plot}) \text{ or } 3600 (5' \times 5' \text{ plot})} \times 100 = \text{cover}$

Column (f) - Estimate - Multiply Column (d) by 0.7 (3' x 3' plot) or 0.25 (5' x 5' plot)

Column (g) - Composition - $\frac{\text{Cover (Column (f)) of specie}}{\text{Total cover (of plot in Column (f))}} \times 100 = \text{percent composition}$

U.S. DEPARTMENT OF THE INTERIOR
BUREAU OF LAND MANAGEMENT
SOIL-VEGETATION INVENTORY METHOD

***** SVIM *****
TRANSECT DATA SHEET

(11)
AERIAL PHOTO

(12)
RECORDER

Royce

RECORD TYPE (1) V 1
FORMAT CODE (2) D
BLM ADMIN UNIT (ST/DI/RA/PU). (3) **UTISLPERA**
ALLOTMENT (4) **West GRASSY**
PASTURE (5) **SOUTH**
SITE WRITEUP AREA (SWA) . . . (6) **01**
TRANSECT NUMBER (7) **830615**
COMPARISON AREA (8) **01**
DATE (YYMMDD) (9) **830615**
ACTION CODE (A,D) (10) **01**

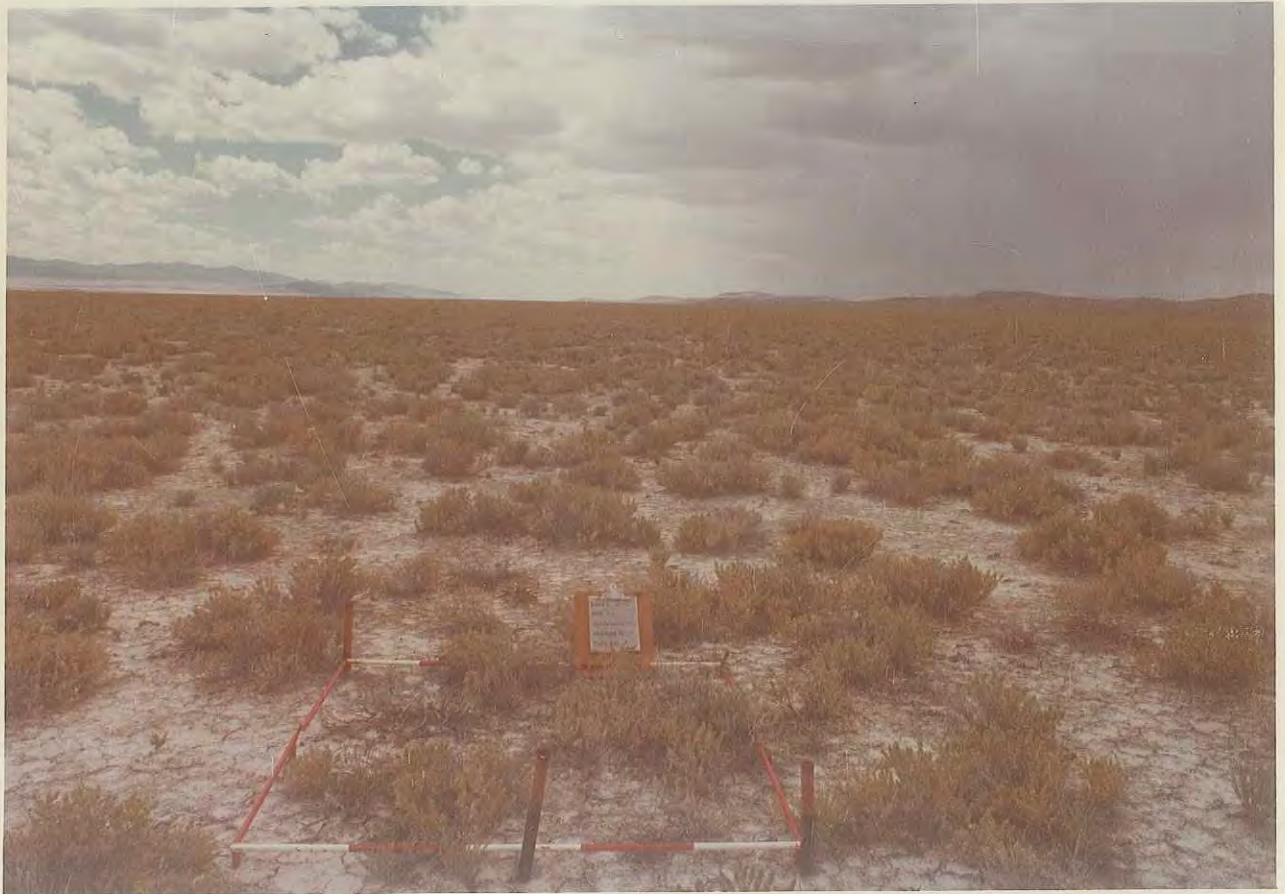
(13) GROUND COVER DATA				(14) HITS	(15) PLANT LIST			(16) SOIL FACTOR ITEMS	(16) RATING
BASAL	DOT COUNT				SYMBOL	SYMBOL	SYMBOL		
BARE GROUND	41	41%		31				SOIL MOVEMENT	
PERISTENT LITTER	3	7%		4				SURFACE LITTER	
NON-PERSISTENT LITTER				3				SURFACE ROCK	
GRAVEL (2mm - 3")				7				PEDESTALLING	
COBBLE (3" - 10")				1				FLOW PATTERNS	
STONE (> 10")				2				RILLS	
BEDROCK								GULLIES	
								(17) SOIL SURFACE FACTOR TOTAL	

(18) LEVEL OF TRANSECT HIT					(19) HITS	(18) LEVEL OF TRANSECT HIT					(19) HITS
BASAL	CANOPY 1	CANOPY 2	CANOPY 3	DOT COUNT		BASAL	CANOPY 1	CANOPY 2	CANOPY 3	DOT COUNT	
ARTR				4	9						
BRTE				41	38						
ELSA				3	3						
TESP				1	1						
CELA				1	1						

(Continued on reverse)



TRANSECT 3
June 10, 1976



TRANSECT 3
June 22, 1983

1970 & 1969

READINGS # 2&1

PLOT # 3

UNITED STATES
DEPARTMENT OF THE INTERIOR
BUREAU OF LAND MANAGEMENT

District Salt Lake
Date 2/18/70
Examiner L. Perkins

RANGE TREND PLOT DATA

Allotment <u>Diamond - T</u>	Pasture <u>North</u>	Key Species	Elevation
Grazing System <u>deferred rotation</u>	PLOT		Slope <u>0</u>
Treatment <u></u>	Number <u>3</u>	Size <u>5x5</u>	Key Species <u>Atco</u>
	Vegetative Type <u>saltbush</u>		Exposure <u>flat</u>
		Key Species <u>KOAM</u>	

LIST BY SPECIES (a)	NUMBER		1/16 SQ. FT. UNITS (estimate) (d)	TOTAL SQ. IN. (measure- ment) (e)	PERCENT		SIZE OF INDIVIDUAL PLANTS (A = TT ab) (h)
	MATURE PLANTS (b)	SEED- LINGS (c)			COVER (f)	COMPO- SITION (g)	
Grasses (Basal Cover)							
TOTAL							
Forbs (Basal Cover)							
TOTAL							
Browse (Foliage Cover)							
<u>Atco</u>	<u>24</u>		<u>97.5</u>		<u>24.38</u>	<u>92.3</u>	<u>23 19 14 - 25 14</u>
<u>Koam</u>	<u>2</u>		<u>2.5</u>		<u>.62</u>	<u>7.7</u>	<u>2 -</u>
TOTAL							
Litter			<u>10.5</u>		<u>2.62</u>		<u>----- 5</u>
PLOT TOTAL					<u>27.62</u>	<u>100</u>	

Comments

TREND INDEX SUMMARY

Composition, Key Species (percent)	<u>100.0</u>
Cover, Live Vegetation (percent)	<u>25.00</u>
Seedlings, Key Species (number)	<u>0</u>
Litter, Plot Total (percent)	<u>2.62</u>
TOTAL	<u>127.62</u>

$$\frac{127.6}{130} = 98\%$$

SPECIFIC INSTRUCTIONS

Column

- (d) Each 1/16 sq. ft. unit = 0.7 percent, 3 × 3 ft. plot; 0.25 percent, 5 × 5 ft. plot
- (h) Record length and breadth — Divide by 2 for major and minor radii
1. Circle understory plants
 2. Do not use understory plants in computing cover
 3. In Trend Index Summary, cover live vegetation may be either total plot cover or cover of key species only

GENERAL INSTRUCTIONS

APPARENT TREND DATA

On-site Analysis (write concise narration of items listed below)

1. Soil stability, active erosion
2. Relative plant composition:
 - a. desirable vs. undesirable
 - b. protected vs. unprotected
3. Vigor — size, number of culms, growth, seedheads, etc
4. Reproduction
5. Evidence of grazing — past and present
6. Apparent trend

Revisitation Analysis

Compare with previous analysis. Note change in species, soil cover, litter, amount of erosion, etc. Use extra sheets, if necessary.

1. Soil stable
2. Scattered amounts of Hagl.
90% Atco.
Some small Koam are protected by Atco.
3. Vigor of Atco good.
4. very little reproduction
5. Some animal droppings + rabbit signs
6. Stable

UNITED STATES
DEPARTMENT OF THE INTERIOR
BUREAU OF LAND MANAGEMENT

District

SALT LAKE

Date

8/12/69

Examiner

CARPENTER PERKINS

RANGE TREND PLOT DATA

22 Steps North of Red Post

Allotment Diamond T	Pasture North	Key Species ATCO	Elevation
Grazing System DEFERRED ROTATION	PLOT Number 3 Size 5x5		Slope 0%
Treatment	Vegetative Type SALT BUSH		Exposure FLAT

LIST BY SPECIES (a)	NUMBER		1/16 SQ. FT. UNITS (estimate) (d)	TOTAL SQ. IN. (measure- ment) (e)	PERCENT		SIZE OF INDIVIDUAL PLANTS (A = TT ab) (h)
	MATURE PLANTS (b)	SEED- LINGS (c)			COVER (f)	COMPO- SITION (g)	
Grasses (Basal Cover)							
TOTAL							
Forbs (Basal Cover)							
TOTAL							
Browse (Foliage Cover)							
ATCO Shadscale	24		119		29.75	98.3	20.25-16-29-29
Koam	2		2		.5	17.7	21 38
TOTAL			121		30.25	100.0	74 92 74 17.7 25
Litter							119
PLOT TOTAL							

Comments

TREND INDEX SUMMARY

Composition, Key Species (percent)	100
Cover, Live Vegetation (percent)	30
Seedlings, Key Species (number)	
Litter, Plot Total (percent)	
TOTAL	130

$\frac{130}{130} = 100\%$

UNITED STATES
DEPARTMENT OF THE INTERIOR
BUREAU OF LAND MANAGEMENT

District
Salt Lake
Date
4-3-69
Examiner
Decker, King

RANGE TREND PLOT DATA

Allotment <i>Diamond T Livestock Co.</i>	Pasture <i>North</i>	Key Species <i>Atco</i>	Elevation <i>4500</i>
Grazing System <i>Deferred</i>	PLOT Number <i>3</i> Size <i>5'</i>		Slope <i>0%</i>
Treatment <i>Grazed</i>	Vegetative Type <i>13 Atco Koam Sage</i>		Exposure <i>Flat</i>

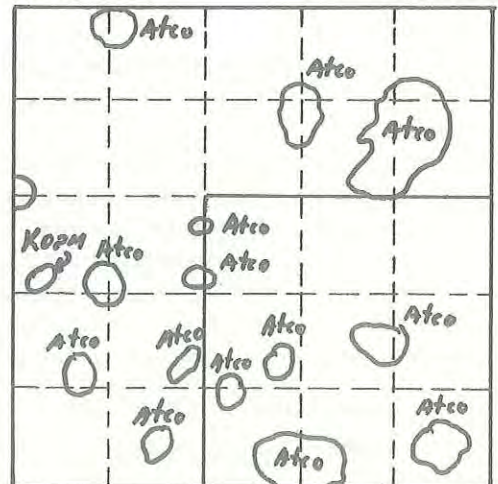
LIST BY SPECIES (a)	NUMBER		1/16 SQ. FT. UNITS (estimate) (d)	TOTAL SQ. IN. (measure- ment) (e)	PERCENT		SIZE OF INDIVIDUAL PLANTS (A = TT ab) (h)
	MATURE PLANTS (b)	SEED- LINGS (c)			COVER (f)	COMPO- SITION (g)	
Grasses (Basal Cover)							
TOTAL							
Forbs (Basal Cover)							
<i>Hagl</i>							
TOTAL							
Browse (Foliage Cover)							
<i>Atco</i>	<i>7</i>	<i>7</i>	<i>36</i>				
<i>Koam</i>	<i>1</i>		<i>1</i>				
TOTAL	<i>8</i>	<i>7</i>					
Litter			<i>37</i>				
PLOT TOTAL							

Comments

*Plot is located .2 miles due east of
N 1/4 Cor. of Sec. 6 T. 1N. R. 11W. Plot is
20 paces No. of Red Steel post.*

TREND INDEX SUMMARY

Composition, Key Species (percent)	
Cover, Live Vegetation (percent)	
Seedlings, Key Species (number)	
Litter, Plot Total (percent)	
TOTAL	





DATE 8-18-70
DIST SALT LAKE
ALLOT \diamond -T
PASTURE NORTH
PLOT NO. 3



DATE 8-18-70
DIST SALT LAKE
ALLOT \diamond -T
PASTURE NORTH
PLOT NO. 3

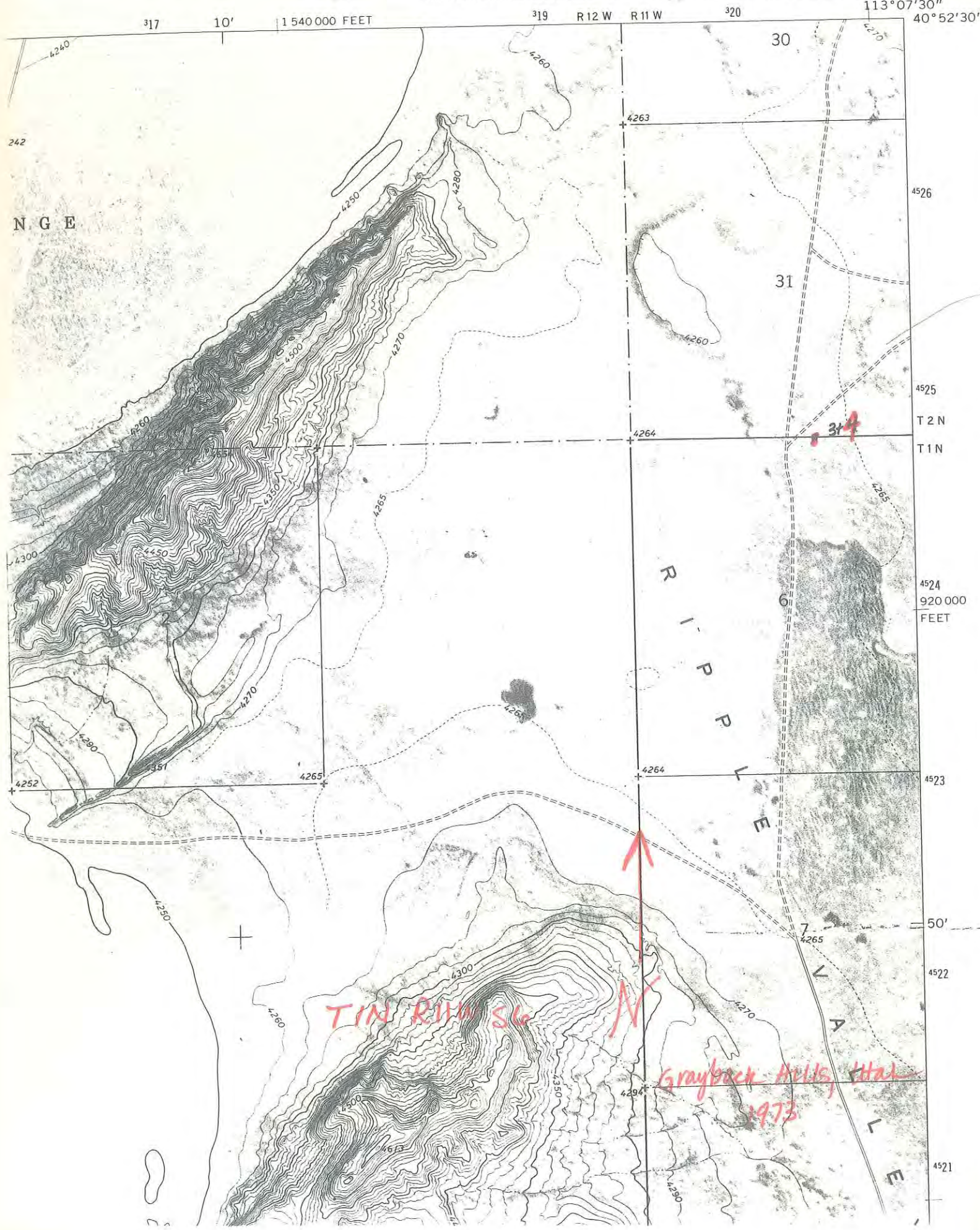
TRANSECT 3
Sept. 17, 1969



TRANSPECT 3
August 18, 1970

GRAYBACK HILLS QUADRANGLE
UTAH—TOOELE CO.
7.5 MINUTE SERIES ORTHO PHOTOGRAPH (TOPOGRAPHIC)

(GRASSY)



WEST GRASSY

Range Study #1

The plot is 46 paces southeast of $N\frac{1}{4}$ corner of Section 1, T. 1 N., R. 11 W.
A green, steel post marks the $\frac{1}{4}$ corner peg.

Range Study #2

The plot is 74 paces north of $N\frac{1}{4}$ corner of Section 1, T. 1 N., R. 11 W.
A green, steel post marks $\frac{1}{4}$ corner.

Range Study #3

The study is located .2 miles due east of $N\frac{1}{4}$ corner of Section 6,
T. 1 N., R. 11 W. Plot #3 is 20 paces north of red, steel post.

Range Study #4

Same procedure as #3. Plot #4 is 20 paces south of red, steel post.

Range Study #5

The plot is 23 steps east of the NW section corner of Section 6, T. 1 N.,
R. 10 W. The section corner is marked by a red, steel post.

Range Study #6

The plot is 33 steps north of the SW section corner of Section 31, T. 2 N.,
R. 10 W. The section corner is marked by a red, steel post.

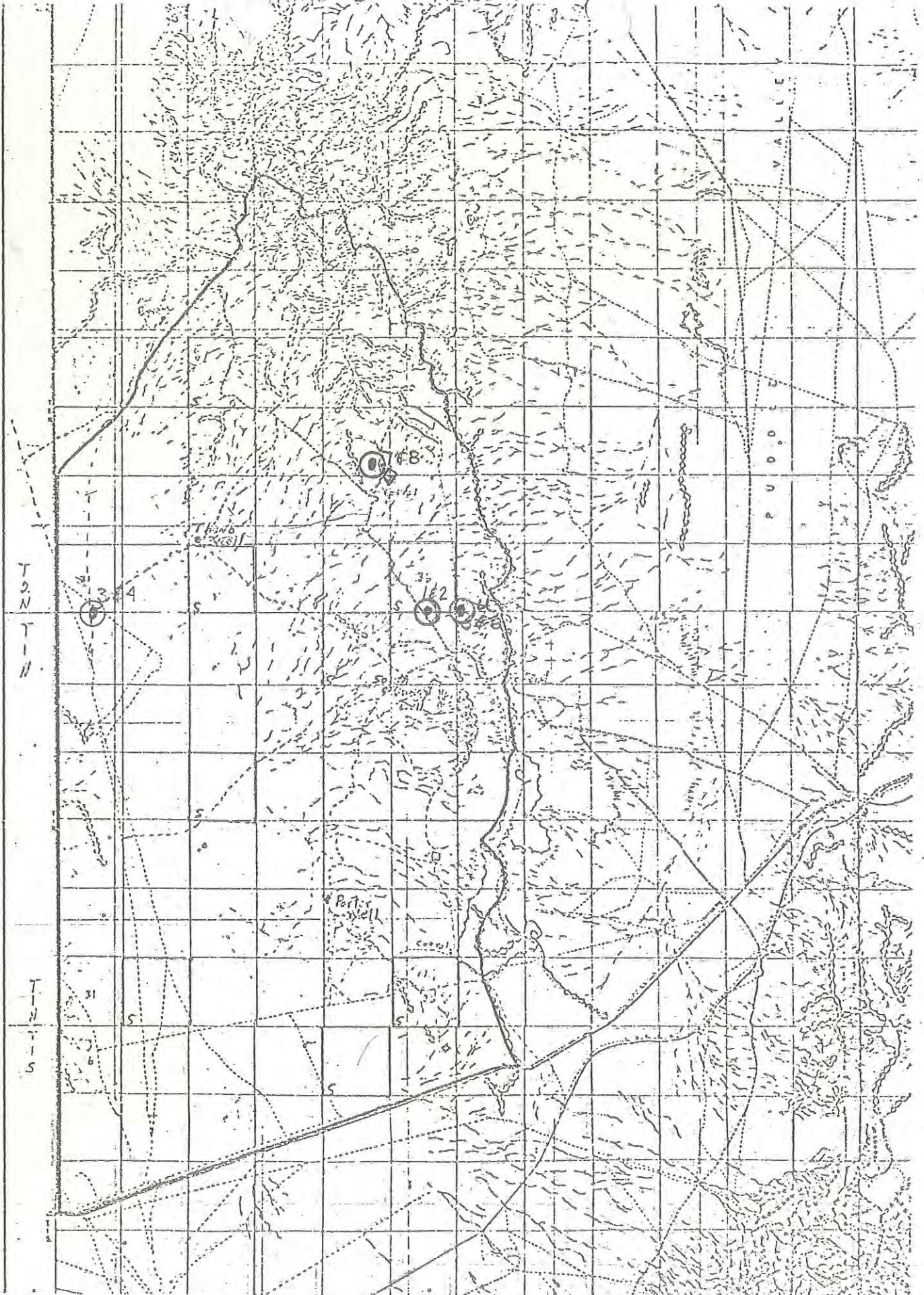
Range Study #7

From study plots 1 and 2, follow the road northeast for ^{3 1/2} miles to an
old corral. Then, north $1\frac{1}{2}$ mile to a red, steel post on the side of the
road. The plot is 51 steps easterly from the red post.

Range Study #8

Same procedure as #7. Plot is 51 steps westerly from the red post.

DIAMOND-T. ALLOT



u Utilization Case O- RANGE STUDY PLOTS

Key Area Location

District Salt Lake Date 7-24-89

Allotment West Grassy Aerial Photo # _____

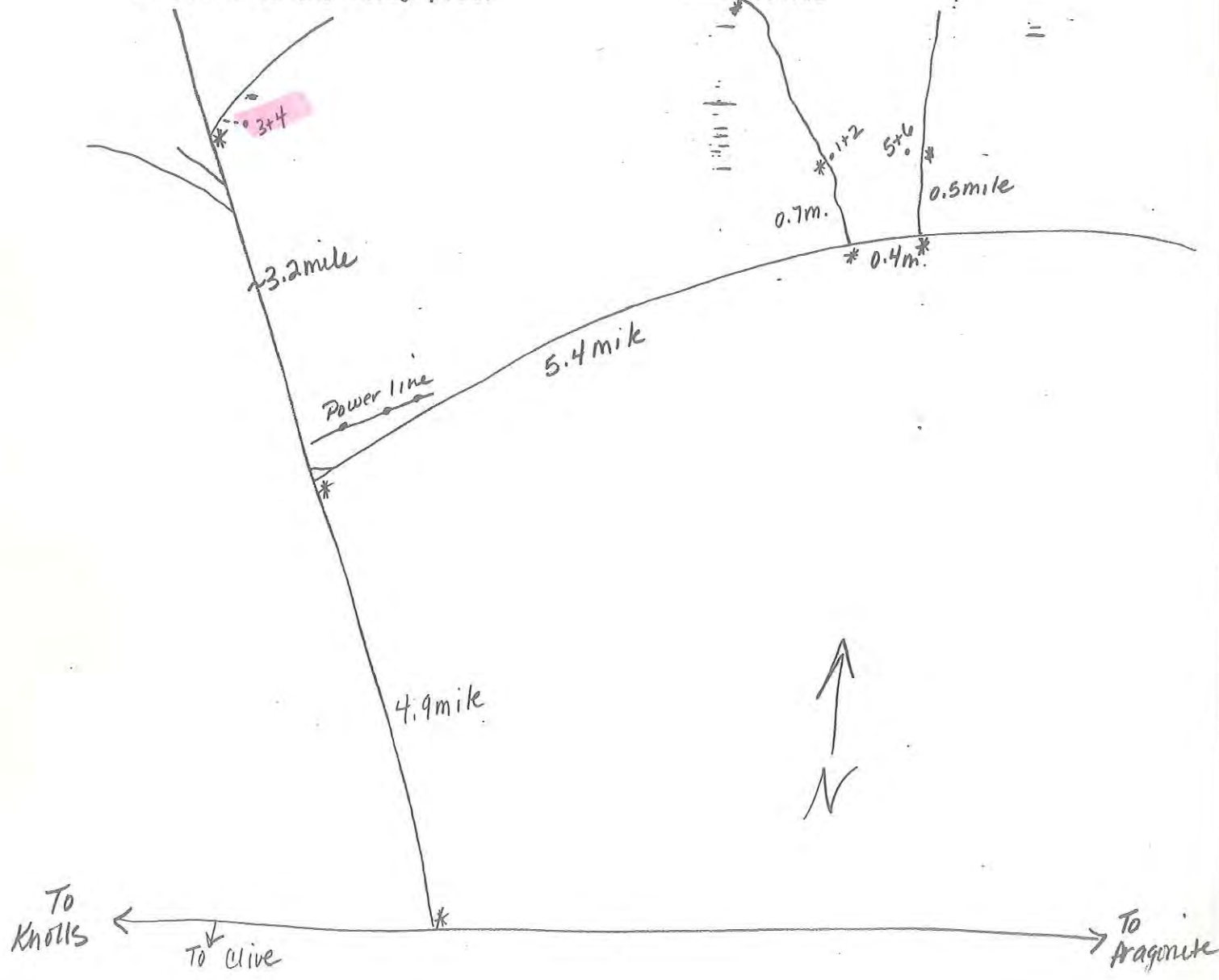
Prepared by K. Snyder or 7 1/2' Quad Ripple Valley - Gray Back Hills

~~or Orthophoto~~ Grassy Mtns.

Photo or Map Date 1973-1973-1973

Location Sketch (Scale 1:10)

show appropriate permanent landmarks (with names and distances) in relation to the study plot.



ALLOTMENT	WEST GRASSY		LOCATION		
	DATE		T1N R11W SEC. 6		
PLOT	WG-4				
List by Species Grasses (basal cover)	NUMBER		1/16 SQ. FT UNITS	PERCENT	
	Mature	Seedlings		Cover	Composition
TOTAL	0	0	0	0	0
Forbs (basal cover)					
TOTAL	0	0	0	0	0
Browse (foliage cover)					
ATCO	4		96.5	24.125	94.6
KOAM	4	2	5.5	1.375	5.4
TOTAL	8	2	102	25.5	100
LITTER					
PLOT TOTAL	8	2	102	25.5	100
TREND INDEX SUMMARY					
Composition, Key Species					
Cover, Live Vegetation					
Seedlings, Key Species					
Litter, Plot Total					
TOTAL					
100					
25.5					
2					
0					
127.5					

ALLOTMENT DATE PLOT	WEST GRASSY 8/18/1970 WG-4		LOCATION T1N R11W SEC. 6		TREND INDEX SUMMARY Composition, Key Species Cover, Live Vegetation Seedlings, Key Species Litter, Plot Total TOTAL
	NUMBER Mature Seedlings	1/16 SQ. FT. UNITS	PERCENT Cover Composition		
List by Species Grasses (basal cover)					100
					21.63
					0
					2.25
					123.88
TOTAL	0	0	0	0	
Forbs (basal cover)					
TOTAL	0	0	0	0	
Browse (foliage cover)					
ATCO	6	81	20.25	93.6	
KOAM	5	5.5	1.38	6.4	
TOTAL	11	86.5	21.63	100	
LITTER		92.25			
PLOT TOTAL	11	86.5	21.63	100	

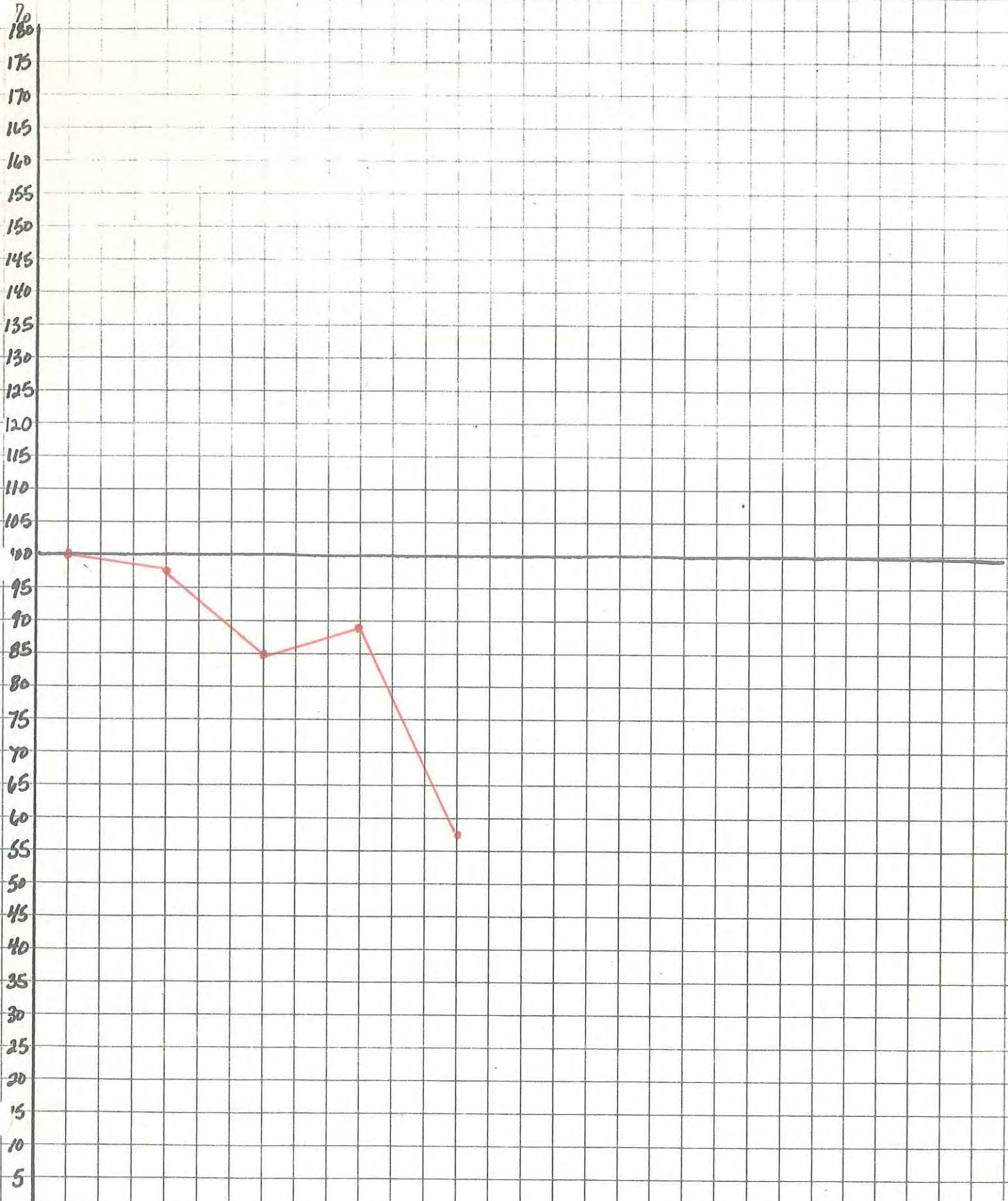
ALLOTMENT	WEST GRASSY		LOCATION		TREND INDEX SUMMARY	
	DATE	6/16/193	T1N R11W SEC. 6			
PLOT	WG-4					
List by Species	NUMBER		1/16 SQ. FT. UNITS	PERCENT		Composition, Key Species
	Mature	Seedlings		Cover	Composition	
Grasses (basal cover)						43.4
BRTE	2		0.4	0.1	0.2	23.6
						21
						13.3
						101.3
TOTAL	2	0	0.4	0.1	0.2	
Forbs (basal cover)						
LEPID	8		5.5	1.4	6	
HAGL	151		47.4	11.9	50.4	
TOTAL	159	0	52.9	13.3	56.4	
Browse (foliage cover)						
ATCO		20	6.3	1.6	9	
KOAM	5	1	34.5	8.6	36.4	
TOTAL	5	21	40.8	10.2	45.4	
LITTER			53.1	13.3		
PLOT TOTAL	166	21	94.1	36.9	102	

ALLOTMENT DATE PLOT	WEST GRASSY 7/8/1985 WG-4		LOCATION T1N R11W SEC. 6			
	NUMBER		PERCENT			
List by Species <i>Grasses (basal cover)</i>	Mature	Seedlings	1/16 SQ. FT. UNITS	Cover	Composition	TREND INDEX SUMMARY Composition, Key Species Cover, Live Vegetation Seedlings, Key Species Litter, Plot Total TOTAL
TOTAL	0	0	0	0	0	
<i>Forbs (basal cover)</i> HAGL	60		13.85	3.46	26.4	13.11
TOTAL	60	0	13.85	3.46	26.4	2
<i>Browse (foliage cover)</i> ATCO	7	2	10.85	2.71	21	23.94
KOAM	4		27.75	6.94	53	113.05
TOTAL	11	2	38.6	9.65	74	
LITTER			95.75	23.94		
PLOT TOTAL	71	2	52.45	37.05	100.4	

ALLOTMENT	WEST GRASSY		LOCATION					
	DATE	7/24/1989	T1N R11W SEC. 6					
PLOT	WG-4							
List by Species	NUMBER		1/16 SQ. FT.		PERCENT		TREND INDEX SUMMARY	
	Mature	Seedlings	UNITS	Composition	Cover	Composition	Composition, Key Species	49.99
Grasses (basal cover)								14.575
								1
								8.075
								73.64
TOTAL	0	0	0	0	0	0		
Forbs (basal cover)								
TOTAL	0	0	0	0	0	0		
Browse (foliage cover)								
KOAM	5		44		11		37.73	
ATCO	5	1	14.3		3.575		12.26	
TOTAL	10	1	58.3		14.575		49.99	
LITTER								
PLOT TOTAL	10	1	58.3		22.65		49.99	

West Grassly -04

Trend Index Summary by Percent

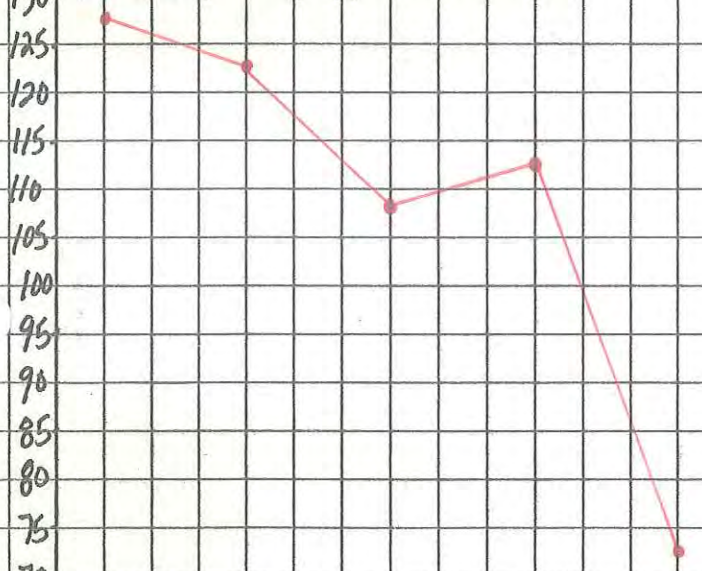


YEAR	69	70	83	85	89					
TOTAL %	100	97	85	89	57.7					

West Grassy - 04

Trend Index Summary

160
155
150
145
140
135
130
125
120
115
110
105
100
95
90
85
80
75
70
65
60
55
50
45
40
35
30
25
20
15
10
5



YEAR	69	70	83	85	89
TOTAL	127.5	123.88	108.3	113.05	73.64

1989 & 1985

READINGS # 6&5

PLOT # 4

TREND STUDIES WRITE-UP

EXAMINER and others present: K. Snyder

ALLOTMENT AND SITE NUMBER: West Grassy - 04

DATE: 7-24-89

TIME: 12:30

SLOPE: Flat

CAMERA LENS: 28m

COMMENTS:

UNITED STATES
DEPARTMENT OF THE INTERIOR
BUREAU OF LAND MANAGEMENT

RANGE TREND PLOT DATA

District *Salt Lake*
Resource Area *Pony Express*
Date and Time *7-24-89 12:30*
Examiner *K. Snyder*

Allotment Name

West Grassy

NUMBER

ALLOTMENT

PLOT

04

PART I - PLOT DATA BY SQUARE FOOT SECTION

SPECIES			MATURE PLANTS	SEEDLINGS	1/16 UNITS	TOTAL SQ. INCHES	MATURE PLANTS	SEEDLINGS	1/16 UNITS	TOTAL SQ. INCHES	MATURE PLANTS	SEEDLINGS	1/16 UNITS	TOTAL SQ. INCHES	MATURE PLANTS	SEEDLINGS	1/16 UNITS	TOTAL SQ. INCHES	MATURE PLANTS	SEEDLINGS	1/16 UNITS	TOTAL SQ. INCHES
GRASS	FORB	BROWSE																				
	(a)		(b)	(c)	(d)	(e)	(b)	(c)	(d)	(e)	(b)	(c)	(d)	(e)	(b)	(c)	(d)	(e)	(b)	(c)	(d)	(e)
		<i>KOAM</i>	<i>1</i>		<i>4</i>										<i>1</i>		<i>5</i>					
		<i>LITTER</i>			<i>T</i>				<i>1</i>				<i>3</i>				<i>1</i>					<i>1</i>
		<i>KOAM</i>															<i>4</i>					<i>1</i>
		<i>ATLO</i>					<i>1</i>		<i>1</i>				<i>2</i>									
		<i>LITTER</i>			<i>.5</i>				<i>1</i>				<i>3</i>				<i>1</i>					<i>1</i>
		<i>KOAM</i>															<i>5</i>					<i>6</i>
		<i>ATLO</i>					<i>1</i>		<i>2</i>													
		<i>LITTER</i>			<i>1</i>				<i>T</i>				<i>.5</i>				<i>T</i>					<i>2</i>
		<i>KOAM</i>									<i>1</i>		<i>1</i>				<i>5</i>		<i>1</i>			<i>4</i>
		<i>ATLO</i>	<i>1</i>		<i>1</i>												<i>1</i>					<i>1</i>
		<i>LITTER</i>			<i>4</i>				<i>1</i>				<i>1</i>				<i>.3</i>					<i>.5</i>
		<i>KOAM</i>			<i>2</i>		<i>1</i>		<i>7</i>													
		<i>ATLO</i>										<i>1.3</i>		<i>1</i>		<i>3</i>		<i>1</i>				<i>3</i>
		<i>LITTER</i>			<i>5</i>				<i>3</i>				<i>T</i>				<i>1</i>					<i>.5</i>

Column (g) - Composition - $\frac{\text{Cover (Column (f)) of specie}}{\text{Total cover (of plot in Column (f))}} \times 100 = \text{percent composition}$

Column (f) - Estimate - Multiply Column (d) by 0.7 (3' x 3' plot) or 0.25 (5' x 5' plot)

Column (e) - Measurement - $\frac{\text{Measured sq. inches (Column (e))}}{1296 (3' \times 3' \text{ plot}) \text{ or } 3600 (5' \times 5' \text{ plot})} \times 100 = \text{cover}$

PART II - SUMMARY OF PLOT DATA

Total - Total data for each specie and enter (Part - II)

Note: Use either estimate or measurement for each species. Do not use both.

Column (e) - Measure - Total sq. inches covered by specie

Column (d) - Estimate - 1/16 sq. feet units covered by specie

Columns (b) & (c) - Enter number

Column (a) - Use four letter plant symbol

Record data for each 1' x 1' section of the plot

PART I - PLOT DATA BY SQUARE FOOT SECTION

(Items not listed are self-explanatory)

SPECIFIC INSTRUCTIONS

Print one legible copy in field for each trend plot. File with Range Trend Plot Location Data (Form 4412-24) and photographs (see Bureau Manual 4115).

GENERAL INSTRUCTIONS

Print one legible copy in field for each trend plot. File with Range Trend Plot Location Data (Form 4412-24) and photographs (see Bureau Manual 4115).

Handwritten calculation: $\frac{73.64}{127.5} \times 100 = 57.7590$

LIST BY SPECIES	MATURE PLANTS	SEED-LINGS	1/16 SQ. FT. UNITS (estimate)	TOTAL SQ. IN. (measure-ment)	PERCENT	
					COVER	COMPO-SITION
(a)	(b)	(c)	(d)	(e)	(f)	(g)
Grasses (Basal Cover)						
TOTAL						
Forbs (Basal Cover)						
TOTAL						
Browse (Foliage Cover)						
Koam	5		44	11	37.73	
ATCO	5	1	14.3	8.575	12.26	
Seedlings, Key Species (number)						1
Litter, Plot Total (percent)						8.075
er						
TOTAL			58.3	14.575		
PLOT TOTAL			32.3	8.075		
				29.15		
TOTAL						73.64

PART IV - TREND INDEX SUMMARY

PART III - PLOT DIAGRAM

PART II - SUMMARY OF PLOT DATA

Hi!
 FROM "85"
 How is the future?

UNITED STATES
 DEPARTMENT OF THE INTERIOR
 BUREAU OF LAND MANAGEMENT

District
 Resource Area
 PONY EXPRESS
 Date and Time 7/8/85 2:00
 Examiner ROYCE

RANGE TREND PLOT DATA

7/8/1985

Allotment Name
 WEST GRASSY # 4

NUMBER
 ALLOTMENT PLOT
 # 4

PART I - PLOT DATA BY SQUARE FOOT SECTION

SPECIES			MATURE PLANTS	SEEDLINGS	1/16 UNITS	TOTAL SQ. INCHES	MATURE PLANTS	SEEDLINGS	1/16 UNITS	TOTAL SQ. INCHES	MATURE PLANTS	SEEDLINGS	1/16 UNITS	TOTAL SQ. INCHES	MATURE PLANTS	SEEDLINGS	1/16 UNITS	TOTAL SQ. INCHES	MATURE PLANTS	SEEDLINGS	1/16 UNITS	TOTAL SQ. INCHES
GRASS	FORB	BROWSE																				
(a)	(a)	(a)	(b)	(c)	(d)	(e)	(b)	(c)	(d)	(e)	(b)	(c)	(d)	(e)	(b)	(c)	(d)	(e)	(b)	(c)	(d)	(e)
	KOAM	ATCO	1		6				1		1		10								2	.25
	MAGL								.75		1		.75									
	LITTER				7				8		5		3								4	
	MAGL		8		1.5		5		1.0		2		.25							3		1.0
		KOAM											.75							7		
		ATCO							.5		1		3									
	LITTER				2				5		5		2.5									8
	MAGL		7		3		2		.5		1		.25							2		.25
		ATCO							.25												1	.7
		KOAM																				.5
	LITTER				4				4		3		.25									2
		KOAM									1		.5								1	1.5
		ATCO	1		.75						1		.5									.75
	MAGL		2		.25		5		.75		4		.5		3							
	LITTER				6				2		2		.2									2
		ATCO	1		.5						1		.2								1	1
	MAGL		2		.75		3		.25		5		1		3						1	.1
	LITTER				7				9		2		.2									2

Column (g) - Composition - $\frac{\text{Cover (Column (f)) of specie}}{\text{Total cover (of plot in Column (f))}} \times 100 = \text{percent composition}$

Column (f) - Estimate - Multiply Column (d) by 0.7 (3' x 3' plot) or 0.25 (5' x 5' plot)

Column (e) - Measurement - $\frac{\text{Measured sq inches (Column (e))}}{1296 (3' \times 3' \text{ plot}) \text{ or } 3600 (5' \times 5' \text{ plot})} \times 100 = \text{cover}$

PART II - SUMMARY OF PLOT DATA

Total - Total data for each specie and enter (Part - II)
 Note: Use either estimate or measurement for each species. Do not use both.
 Column (e) - Measure - Total sq. inches covered by specie
 Column (d) - Estimate - 1/16 sq. feet units covered by specie
 Columns (b) & (c) - Enter number
 Column (a) - Use four letter plant symbol

Record data for each 1' x 1' section of the plot

PART I - PLOT DATA BY SQUARE FOOT SECTION

(Items not listed are self-explanatory)

SPECIFIC INSTRUCTIONS

photographs (see Bureau Manual 4115).

Print one legible copy in field for each trend plot. File with Range Trend Plot Location Data (Form 4412-24) and

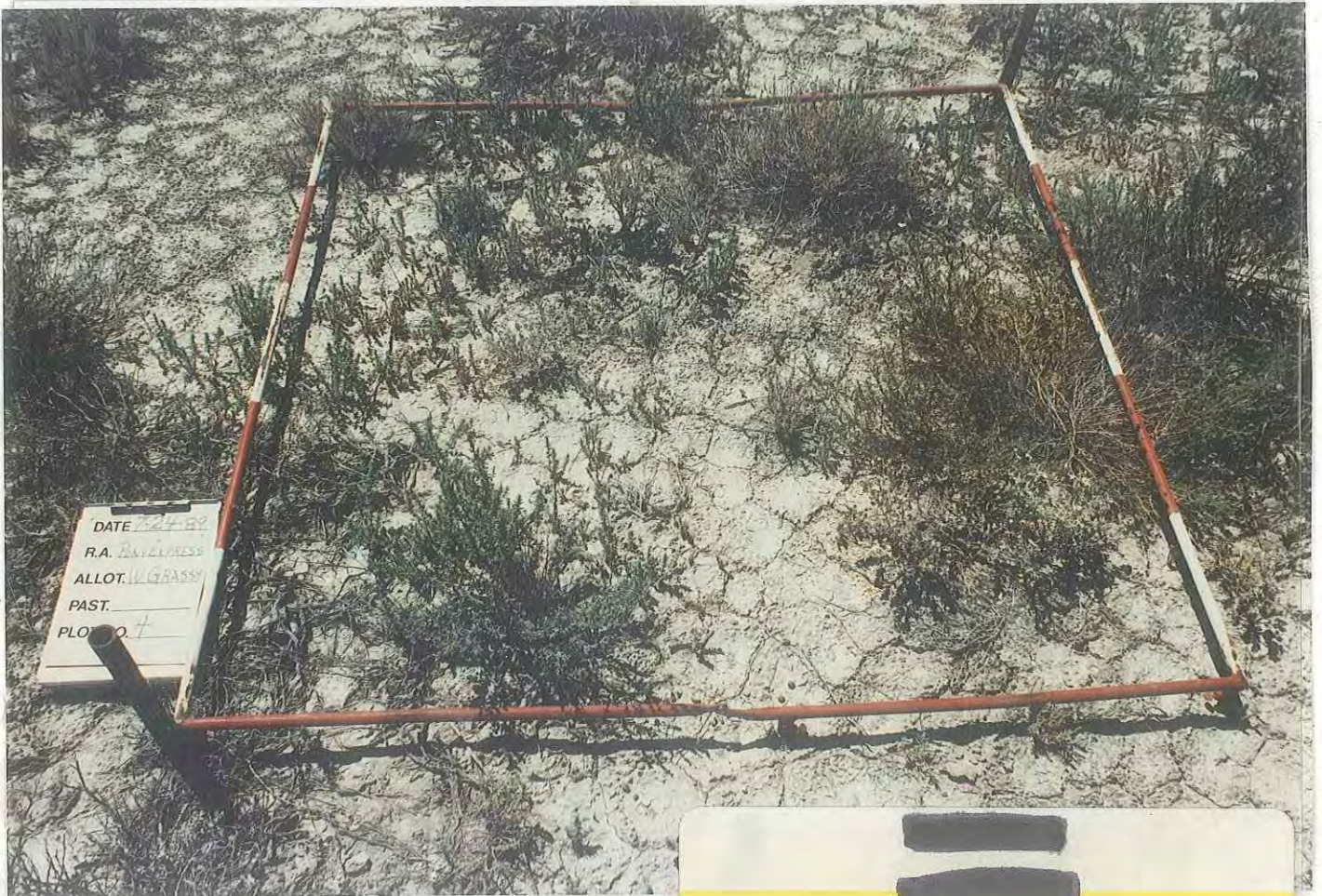
GENERAL INSTRUCTIONS

Key species 113.05
 $\frac{127.5}{113.05} = 89\%$

LIST BY SPECIES	NUMBER		SQ. FT. UNITS (estimate)	TOTAL SQ. IN. (measure-ment)	COVER PERCENT	COMPO-SITION	(a)	(b)	(c)	(d)	(e)	(f)	(g)
	MATURE PLANTS	SEED-LINGS											
Grasses (Basal Cover)													
Forbs (Basal Cover)													
HARL			13.85	3.46	26.4								
TOTAL													
Browse (Foliage Cover)													
KOAM	4	7	27.75	6.94	53.0								
ATCO	2	2	10.85	2.71	21.0								
Seedlings, Key Species (number)													
2.0													
Litter, Plot Total (percent)													
23.94													
TOTAL													
er			95.75		23.94								
PLOT TOTAL													
TOTAL													113.05

PART IV - TREND INDEX SUMMARY

PART III - PLOT DIAGRAM



7/13/85 11:00 AM



DATE 7/13/85
 DIST SOUTHWEST
 ALLOT 1/2 ACRE
 PASTURE South
 PLOT NO. 4

7/13/85 11:00 AM



DATE 7/13/85
 DIST SOUTHWEST
 ALLOT 1/2 ACRE
 PASTURE South
 PLOT NO. 4

1983 & 1976

READINGS # 4&3

PLOT # 4

UNITED STATES
DEPARTMENT OF THE INTERIOR
BUREAU OF LAND MANAGEMENT

District
SALT LAKE
Resource Area
PONY EXPRESS
Date and Time **6-16-83 11:30**
Examiner
Royce

RANGE TREND PLOT DATA

Allotment Name **WEST GRASSY - HAGL IS DOING WELL**
High MOISTURE YEAR
MANY ATCO SEEDINGS

NUMBER	
ALLOTMENT	PLOT
	4

PART I - PLOT DATA BY SQUARE FOOT SECTION

SPECIES			MATURE PLANTS	SEEDLINGS	1/16 UNITS	TOTAL SQ. INCHES	MATURE PLANTS	SEEDLINGS	1/16 UNITS	TOTAL SQ. INCHES	MATURE PLANTS	SEEDLINGS	1/16 UNITS	TOTAL SQ. INCHES	MATURE PLANTS	SEEDLINGS	1/16 UNITS	TOTAL SQ. INCHES		
GRASS	FORB	BROWSE																		
(a)	(a)	(a)	(b)	(c)	(d)	(e)	(b)	(c)	(d)	(e)	(b)	(c)	(d)	(e)	(b)	(c)	(d)	(e)		
		ATCO			3.0											1	.2		1	.4
	LEPID							2	1.0								1.0			1.0
	HAGL		8		2.0		5	1.1			7		1.0		11		2.0		8	2.5
		KOAM																		
	LITTER				4.5				9.0					2.0				2.5		1.0
	HAGL	KOAM					2	2.0							1		1.0			.2
	HAGL		4		1.5		10	2.5			7		2.0		7		3.3		6	2.0
		ATCO		1	.5						1		.3		1		.2			.1
	LITTER				9.0				3.0					.8				.1		1.0
	HAGL		13		5.5		6	2.2			2		.5		2		.1		4	2.0
		ATCO					1	.1			1		.1		1		.1		1	.1
	LEPID														1		.5			
	LITTER				.5				.2					.4				.1		.5
	HAGL		8		3.5		8	3.0			9		2.5		3		.8		2	.2
		ATCO		2	.2		2	.5			2		.2		2		.1		2	.1
	LEPID										1		1.0							
		KOAM																2.5		
	BRTE						1	.2			1		.2							
	LITTER				.1				2.5					4.0				3.0		4.0
		KOAM	1		12.0				.3				1.5		1		14.0			1.0
		ATCO		1	.1															
	HAGL		4		5		4	2.0			6		2.7						7	2.0
	LEPID														2		1.0			
	LITTER				.1				.1					.2				.5		4.0

PART II - SUMMARY OF PLOT DATA						PART III - PLOT DIAGRAM	
LIST BY SPECIES (a)	NUMBER		1/16 SQ. FT. UNITS (estimate) (d)	TOTAL SQ. IN. (measurement) (e)	PERCENT		
	MATURE PLANTS (b)	SEED-LINGS (c)			COVER (f)	COMPOSITION (g)	
Grasses (Basal Cover)							
BRTE	2		0.4		0.1	0.2	
TOTAL							
Forbs (Basal Cover)							
LEPID	8		5.5		1.4	6	
HAGL	151		47.4		11.9	50.4	
TOTAL							
Browse (Foliage Cover)							
ATCO		20	6.3		1.6	7	
KOAM	5	1	34.5		8.6	36.1	
TOTAL							
Litter							
			53.1		23.6		
TOTAL					36.9	100.0	
						PART IV - TREND INDEX SUMMARY	
						Composition, Key Species (percent)	43.4
						Cover, Live Vegetation (percent)	23.6
						Seedlings, Key Species (number)	21
						Litter, Plot Total (percent)	13.3
						TOTAL	108.3

GENERAL INSTRUCTIONS

$$\frac{108.3}{127.5} = 85.20$$

Print one legible copy in field for each trend plot. File with Range Trend Plot Location Data (Form 4412-24) and photographs (see Bureau Manual 4115).

SPECIFIC INSTRUCTIONS

(Items not listed are self-explanatory)

PART I - PLOT DATA BY SQUARE FOOT SECTION

Record data for each 1' x 1' section of the plot

- Column (a) - Use four letter plant symbol
- Columns (b) & (c) - Enter number
- Column (d) - Estimate - 1/16 sq. feet units covered by specie
- Column (e) - Measure - Total sq. inches covered by specie
- Note: Use either estimate or measurement for each species. Do not use both.
- Total - Total data for each specie and enter (Part - II)

PART II - SUMMARY OF PLOT DATA

Column (e) - Measurement - $\frac{\text{Measured sq. inches (Column (e))}}{1296 (3' \times 3' \text{ plot}) \text{ or } 3600 (5' \times 5' \text{ plot})} \times 100 = \text{cover}$

Column (f) - Estimate - Multiply Column (d) by 0.7 (3' x 3' plot) or 0.25 (5' x 5' plot)

Column (g) - Composition - $\frac{\text{Cover (Column (f)) of specie}}{\text{Total cover (of plot in Column (f))}} \times 100 = \text{percent composition}$



DATE 6-22-83
DIST SALT LAKE
ALLOT WEST
PASTURE SOUTH
PLOT NO. 1



DATE 6-22-83
DIST SALT LAKE
ALLOT WEST
PASTURE SOUTH
PLOT NO. 4

TRANSECT 4
June 10, 1976



TRANSECT 4
June 22, 1983

1970 & 1969

READINGS # 2&1

PLOT # 4

UNITED STATES
DEPARTMENT OF THE INTERIOR
BUREAU OF LAND MANAGEMENT

District Salt Lake
Date 8/18/70
Examiner J. Perkins

RANGE TREND PLOT DATA

Allotment <u>Diamond - T</u>	Pasture <u>South</u>	Key Species	Elevation
Grazing System <u>deferred rotation</u>	PLOT		Slope
Treatment	Number <u>4</u>	Size <u>5x5</u>	<u>0</u>
	Vegetative Type <u>saltbush</u>	<u>KOAM</u>	Exposure <u>flat</u>

LIST BY SPECIES (a)	NUMBER		1/16 SQ. FT. UNITS (estimate) (d)	TOTAL SQ. IN. (measure- ment) (e)	PERCENT		SIZE OF INDIVIDUAL PLANTS (A = TT ab) (h)
	MATURE PLANTS (b)	SEED- LINGS (c)			COVER (f)	COMPO- SITION (g)	
Grasses (Basal Cover)							
TOTAL							
Forbs (Basal Cover)							
TOTAL							
Browse (Foliage Cover)							
<u>Atco</u>	<u>6</u>		<u>81</u>		<u>20.25</u>	<u>93.6</u>	<u>25 18 30</u>
<u>Koam</u>	<u>5</u>		<u>5.5</u>		<u>1.38</u>	<u>16.4</u>	<u>2-21</u>
TOTAL							
Litter			<u>9</u>		<u>2.25</u>		<u>1 2 2 2 -1-</u>
PLOT TOTAL					<u>23.88</u>	<u>100</u>	

Comments

TREND INDEX SUMMARY

Composition, Key Species (percent)	<u>100-</u>
Cover, Live Vegetation (percent)	<u>21.63</u>
Seedlings, Key Species (number)	<u>0</u>
Litter, Plot Total (percent)	<u>2.25</u>
TOTAL	<u>123.88</u>

$123.9 - 1275 = 976$

GENERAL INSTRUCTIONS
APPARENT TREND DATA

On-site Analysis (write concise narration of items listed below)

1. Soil stability, active erosion
 2. Relative plant composition:
 - a. desirable vs. undesirable
 - b. protected vs. unprotected
 3. Vigor—size, number of culms, growth, seedheads, etc
 4. Reproduction
 5. Evidence of grazing—past and present
 6. Apparent trend
- Revisitation Analysis
- Compare with previous analysis. Note change in species, soil cover, litter, amount of erosion, etc. Use extra sheets, if necessary.

Original to #2

SPECIFIC INSTRUCTIONS

- Column
- (d) Each 1/16 sq. ft. unit = 0.7 percent, 3 x 3 ft. plot; 0.25 percent, 5 x 5 ft. plot
 - (h) Record length and breadth — Divide by 2 for major and minor radii
1. Circle understory plants
 2. Do not use understory plants in computing cover
 3. In Trend Index Summary, cover live vegetation may be either total plot cover or cover of key species only

Form 4412-19
July 1968)

UNITED STATES
DEPARTMENT OF THE INTERIOR
BUREAU OF LAND MANAGEMENT
RANGE TREND PLOT DATA

District SALT LAKE
Date 8-12-69
Examiner CARPENTER, PECKINS

East from W corner Sec. 6 - 31.
20 steps Southw. from Red Post

Allotment <u>Diamond 71.</u>	Pasture <u>SOUTH</u>	Key Species <u>ATCO</u>	Elevation
Grazing System <u>DEFERRED ROTATION</u>	PLOT Number <u>4</u> Size <u>5x5</u>		Slope <u>0%</u>
Treatment	Vegetative Type <u>SALT BUSH</u>		Exposure <u>FLAT</u>

LIST BY SPECIES (a)	NUMBER		1/16 SQ. FT. UNITS (estimate) (d)	TOTAL SQ. IN. (measure- ment) (e)	PERCENT		SIZE OF INDIVIDUAL PLANTS (A = TT ab) (h)
	MATURE PLANTS (b)	SEED- LINGS (c)			COVER (f)	COMPO- SITION (g)	
Grasses (Basal Cover)							
TOTAL							
Forbs (Basal Cover)							
TOTAL							
Browse (Foliage Cover)							
<u>ATCO Shrubs</u>	<u>8</u>		<u>96</u>		<u>74.125</u>	<u>94.6</u>	<u>31-21-2-30-12</u>
<u>KOAM</u>	<u>2</u>		<u>56</u>		<u>13.75</u>	<u>54</u>	<u>2-12-2</u>
TOTAL			<u>102</u>		<u>25.5</u>	<u>100.0</u>	
Litter							
PLOT TOTAL							

Comments

TREND INDEX SUMMARY

Composition, Key Species (percent)	<u>100</u>
Cover, Live Vegetation (percent)	<u>25.5</u>
Seedlings, Key Species (number)	<u>2</u>
Litter, Plot Total (percent)	
TOTAL	<u>127.5</u>

UNITED STATES
DEPARTMENT OF THE INTERIOR
BUREAU OF LAND MANAGEMENT

District

Salt Lake

Date

4-3-69

Examiner

Decker King

RANGE TREND PLOT DATA

Allotment <i>Diamond T Livestock Co.</i>	Pasture <i>South</i>	Key Species <i>Atco</i>	Elevation <i>4500</i>
Grazing System <i>Deferred</i>	PLOT Number <i>4</i> Size <i>5'</i>		Slope <i>0%</i>
Treatment <i>Grazed</i>	Vegetative Type <i>13 Atco Koam Sage Hagl</i>		Exposure <i>Flat</i>

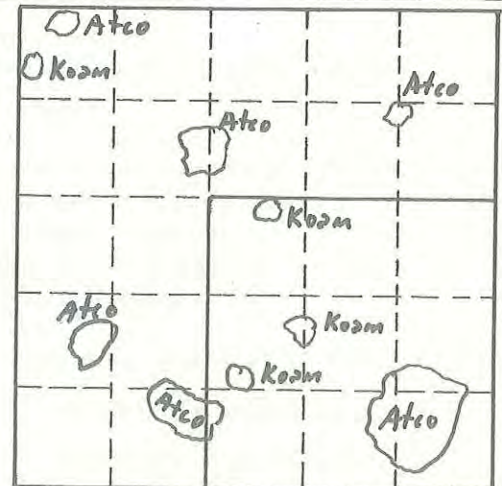
LIST BY SPECIES (a)	NUMBER		1/16 SQ. FT. UNITS (estimate) (d)	TOTAL SQ. IN. (measure- ment) (e)	PERCENT		SIZE OF INDIVIDUAL PLANTS (A = TT ab) (h)
	MATURE PLANTS (b)	SEED- LINGS (c)			COVER (f)	COMPO- SITION (g)	
Grasses (Basal Cover)							
<i>NONE</i>							
TOTAL							
Forbs (Basal Cover)							
TOTAL							
Browse (Foliage Cover)							
<i>Atco</i>	<i>4</i>	<i>2</i>	<i>22</i>				
<i>Koam</i>	<i>4</i>		<i>2</i>				
TOTAL	<i>8</i>	<i>2</i>	<i>24</i>				
Litter							
PLOT TOTAL							

Comments

*Plot is located .2 mi. East of N 1/4 cor. of
Sec. 6 T. 1 N. R. 11 W. It is 20 paces So. of
Red steel post*

TREND INDEX SUMMARY

Composition, Key Species (percent)	
Cover, Live Vegetation (percent)	
Seedlings, Key Species (number)	
Litter, Plot Total (percent)	
TOTAL	





DATE 8-17-70
DIST SALT LAKE
ALLOT \diamond -T
PASTURE SOUTH
PLOT NO. 4

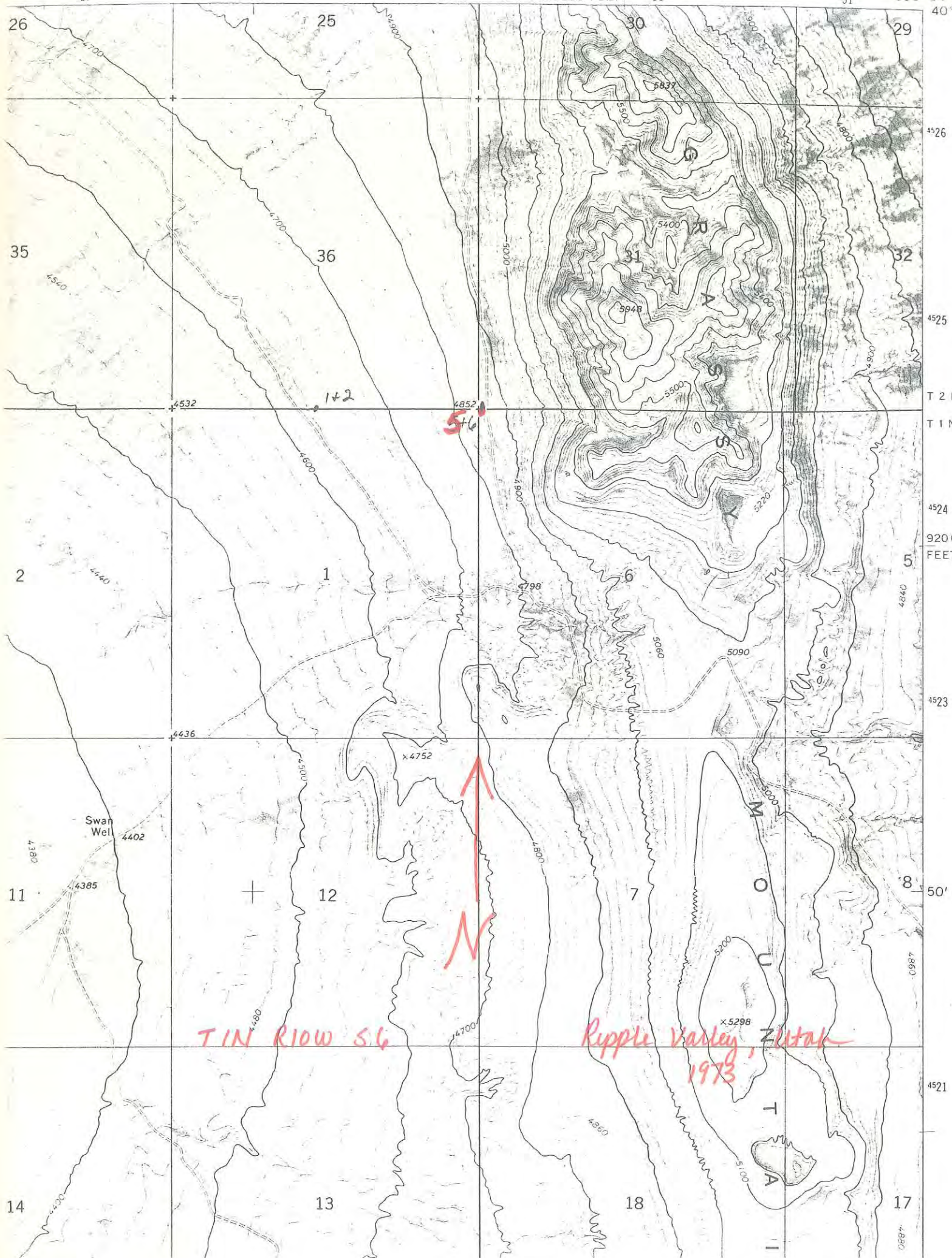


DATE 8-18-70
DIST SALT LAKE
ALLOT \diamond -T
PASTURE SOUTH
PLOT NO. 4

TRANSECT 4
Sept. 17, 1969



TRAVERSECT 4
August 18, 1970



516

TIN RIOW SG

Ripple Valley, Utah
1973



40° 52'

4526

4525

T 2 N

T 1 N

4524

920 000 FEET

5

4840

4523

8

50'

4521

17

WEST GRASSY

Range Study #1

The plot is 46 paces southeast of $N\frac{1}{4}$ corner of Section 1, T. 1 N., R. 11 W.
A green, steel post marks the $\frac{1}{4}$ corner peg.

Range Study #2

The plot is 74 paces north of $N\frac{1}{4}$ corner of Section 1, T. 1 N., R. 11 W.
A green, steel post marks $\frac{1}{4}$ corner.

Range Study #3

The study is located .2 miles due east of $N\frac{1}{4}$ corner of Section 6,
T. 1 N., R. 11 W. Plot #3 is 20 paces north of red, steel post.

Range Study #4

Same procedure as #3. Plot #4 is 20 paces south of red, steel post.

Range Study #5

The plot is 23 steps east of the NW section corner of Section 6, T. 1 N.,
R. 10 W. The section corner is marked by a red, steel post.

Range Study #6

The plot is 33 steps north of the SW section corner of Section 31, T. 2 N.,
R. 10 W. The section corner is marked by a red, steel post.

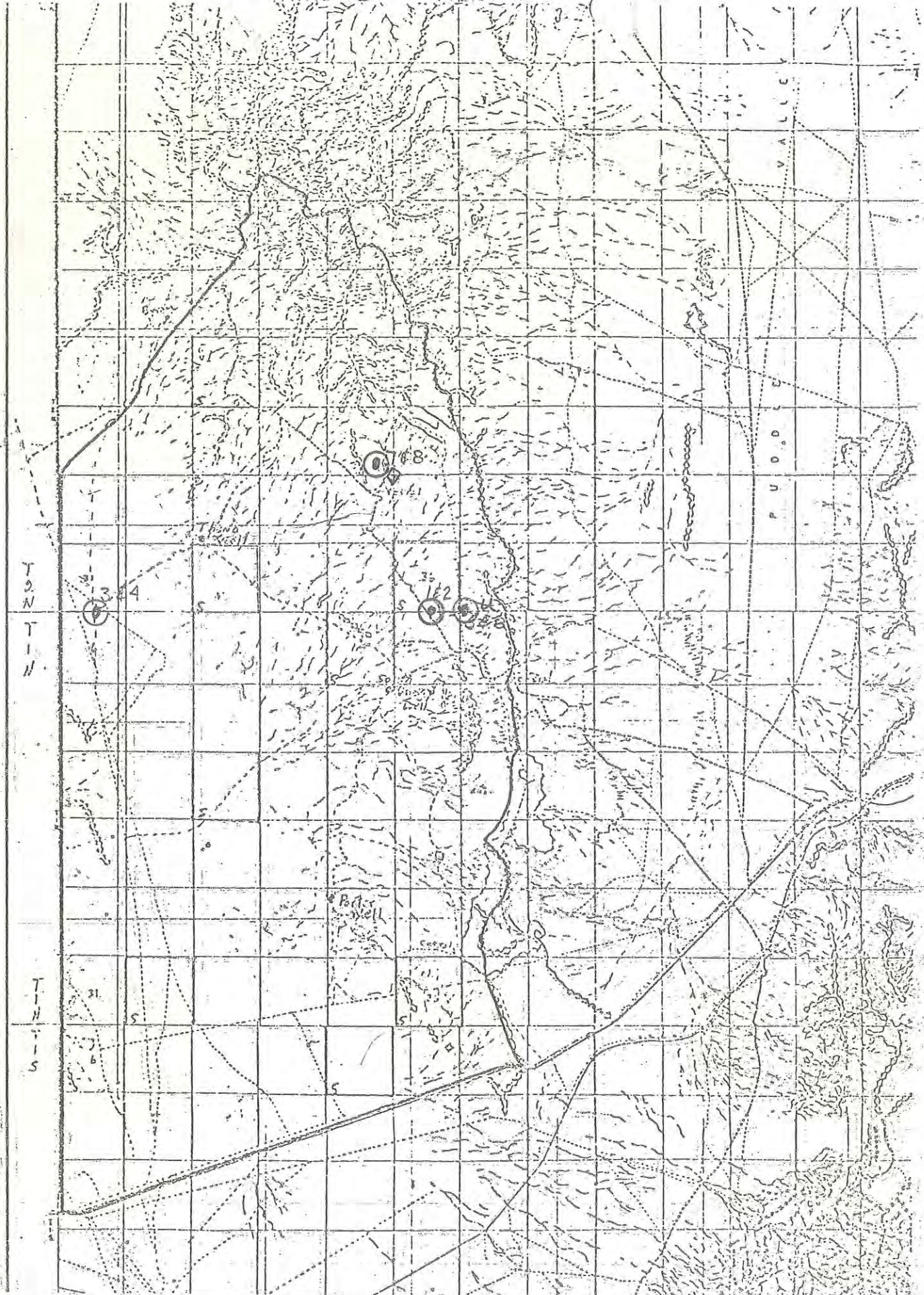
Range Study #7

From study plots 1 and 2, follow the road northeast for ^{3 1/2} miles to an
old corral. Then, north $1\frac{1}{2}$ mile to a red, steel post on the side of the
road. The plot is 51 steps easterly from the red post.

Range Study #8

Same procedure as #7. Plot is 51 steps westerly from the red post.

ALMOND - T. A. LOT.



in Utilization Case O - RANGE STUDY PLOTS

Key Area Location

District Salt Lake Date 7-24-89

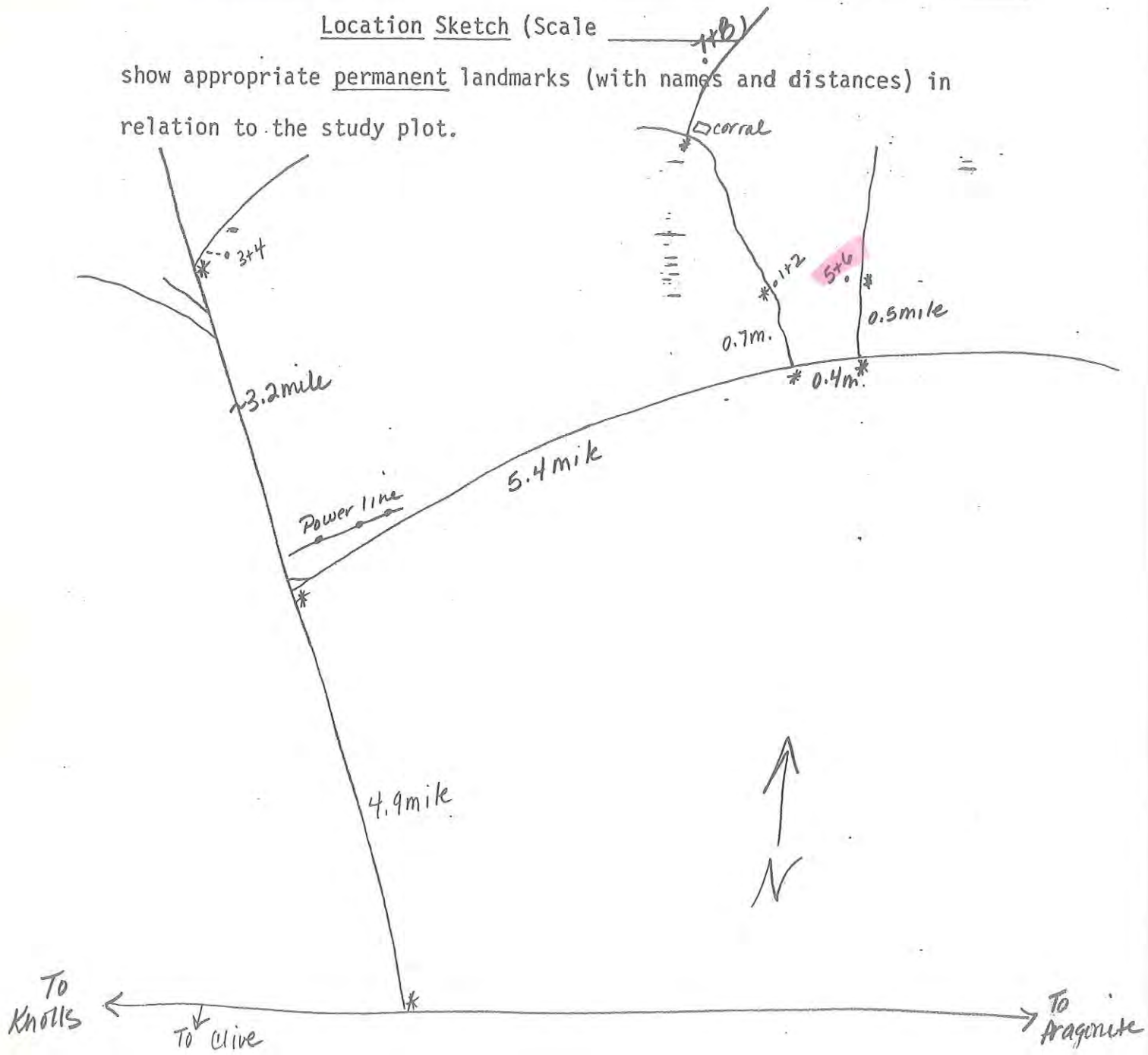
Allotment West Grassy Aerial Photo # _____

Prepared by K. Snyder or 7½' Quad Ripple Valley - Gray Back Hills -
~~or Orthophoto~~ Grassy Mtns.

Photo or Map Date 1973-1973-1973

Location Sketch (Scale _____)

show appropriate permanent landmarks (with names and distances) in relation to the study plot.



ALLOTMENT	WEST GRASSY		LOCATION				
DATE	8/12/1969		T1N R10W SEC. 6				
PLOT	WG-5						
List by Species	NUMBER		1/16 SQ. FT UNITS	PERCENT		TREND INDEX SUMMARY	
	Mature	Seedlings		Cover	Composition	Composition, Key Species	66.3
Grasses (basal cover)							
ORHY	1		3.5	0.875	6.4	Cover, Live Vegetation	13.75
						Seedlings, Key Species	0
						Litter, Plot Total	0
						TOTAL	80.05
TOTAL	1	0	3.5	0.875	6.4		
Forbs (basal cover)							
TOTAL	0	0	0	0	0		
Browse (foliage cover)							
ARNO	6		27	6.75	49		
EULA	3		9.5	2.375	17.3		
ATCO	1		15	3.75	27.3		
TOTAL	10	0	51.5	12.875	93.6		
LITTER							
PLOT TOTAL	11	0	55	13.75	100		

ALLOTMENT	EAST GRASSY	LOCATION				
DATE	9/2/1981	T1N R10W SEC. 6				
PLOT	WG-5					
List by Species	NUMBER	1/16 SQ. FT.		PERCENT		TREND INDEX SUMMARY
		Mature	Seedlings	Cover	Composition	
Grasses (basal cover)						
POSE	1		0.1	0.03	0.4	86.3
BRTE	50					7.53
						0
						2
						95.83
TOTAL	51	0	0.1	0.03	0.4	
Forbs (basal cover)						
TOTAL	0	0	0	0	0	
Browse (foliage cover)						
EULA	3		9	2.25	29.9	
ARNO	3		17	4.25	56.4	
TEGL	1		4	1	13.3	
TOTAL	7	0	30	7.5	99.6	
LITTER			8	2		
PLOT TOTAL	58	0	30.1	9.53	100	

ALLOTMENT	EAST GRASSY		LOCATION			
DATE	7/24/1989		T1N R10W SEC. 6			
PLOT	WG-5					
List by Species	NUMBER		1/16 SQ. FT UNITS	PERCENT		TREND INDEX SUMMARY
	Mature	Seedlings		Cover	Composition	
Grasses (basal cover)						
BRTE	755		37.8	9.5	37.4	50.8
POSE	1		0.5	0.1	0.4	25.4
						0
						7.8
						84
TOTAL	756	0	38.3	9.6	37.8	
Forbs (basal cover)						
TOTAL	0	0	0	0	0	
Browse (foliage cover)						
TEGL			11.5	2.9	11.4	
ARTR	4		40.1	10	39.4	
CELA	4		11.5	2.9	11.4	
TOTAL	8	0	63.1	15.8	62.2	
LITTER			31.2	7.8		
PLOT TOTAL	764	0	101.4	33.2	100	

West Grassy - 05

Trend Index Summary

160
155
150
145
140
135
130
125
120
115
110
105
100
95
90
85
80
75
70
65
60
55
50
45
40
35
30
25
20
15
10
5



YEAR	69	70	81	83	85	89
TOTAL	80	86.8	95.8	84	136.3	86.7

1989

READING # 7

PLOT # 5

TREND STUDIES WRITE-UP

EXAMINER and others present: K. Snyder

ALLOTMENT AND SITE NUMBER: West Grassy - 05

DATE: 7-24-89

TIME: 8:45

SLOPE: 0-390

CAMERA LENS: 28m

COMMENTS:

UNITED STATES
DEPARTMENT OF THE INTERIOR
BUREAU OF LAND MANAGEMENT

RANGE TREND PLOT DATA

District *Salt Lake*
Resource Area *Pony Express*
Date and Time *7-24-89 8:45a*
Examiner *K. Snyder*

Allotment Name

West Grassy

NUMBER

ALLOTMENT

PLOT

05

PART I - PLOT DATA BY SQUARE FOOT SECTION

SPECIES			MATURE PLANTS	SEEDLINGS	1/16 UNITS	TOTAL SQ. INCHES	MATURE PLANTS	SEEDLINGS	1/16 UNITS	TOTAL SQ. INCHES	MATURE PLANTS	SEEDLINGS	1/16 UNITS	TOTAL SQ. INCHES	MATURE PLANTS	SEEDLINGS	1/16 UNITS	TOTAL SQ. INCHES	MATURE PLANTS	SEEDLINGS	1/16 UNITS	TOTAL SQ. INCHES
GRASS	FORB	BROWSE																				
	(a)		(b)	(c)	(d)	(e)	(b)	(c)	(d)	(e)	(b)	(c)	(d)	(e)	(b)	(c)	(d)	(e)	(b)	(c)	(d)	(e)
		<i>ARNO</i>					<i>1</i>		<i>1.5</i>												<i>1</i>	<i>3</i>
		LITTER			<i>.5</i>				<i>1</i>				<i>T</i>				<i>T</i>				<i>T</i>	
		<i>ARNO</i>	<i>1</i>		<i>13</i>		<i>-</i>		<i>1</i>		<i>-</i>		<i>1</i>		<i>1</i>		<i>5</i>					
		<i>FULA</i>					<i>1</i>		<i>1</i>													
		LITTER			<i>1</i>				<i>.5</i>				<i>T</i>				<i>.5</i>				<i>T</i>	
		<i>ARNO</i>	<i>-</i>		<i>6</i>						<i>-</i>		<i>1</i>		<i>-</i>		<i>3</i>				<i>-</i>	<i>4</i>
		LITTER			<i>5</i>				<i>T</i>				<i>.5</i>				<i>1.5</i>				<i>.5</i>	
		<i>TEGL</i>	<i>-</i>		<i>2</i>												<i>1.5</i>				<i>1</i>	<i>12</i>
		<i>ARNO</i>													<i>-</i>		<i>4</i>				<i>1</i>	<i>12</i>
		LITTER			<i>2</i>				<i>3</i>				<i>7</i>				<i>T</i>				<i>T</i>	
		<i>TEGL</i>	<i>-</i>		<i>5</i>																	
		<i>ARNO</i>							<i>1.3</i>													
		LITTER			<i>4</i>				<i>T</i>				<i>4</i>				<i>T</i>				<i>.5</i>	

PART II - SUMMARY OF PLOT DATA							PART III - PLOT DIAGRAM		
LIST BY SPECIES (a)	NUMBER		1/16 SQ. FT. UNITS (estimate) (d)	TOTAL SQ. IN. (measurement) (e)	PERCENT				
	MATURE PLANTS (b)	SEED-LINGS (c)			COVER (f)	COMPOSITION (g)			
Grasses (Basal Cover)									
TOTAL									
Forbs (Basal Cover)									
TOTAL									
							PART IV - TREND INDEX SUMMARY		
							Composition, Key Species (percent)	63.91	
Browse (Foliage Cover)							Cover, Live Vegetation (percent)	13.95	
ARNO	3	1	54.8		13.7	62.77	Seedlings, Key Species (number)	1	
EULA	1		1		0.25	1.14	Litter, Plot Total (percent)	7.875	
TOTAL			55.8		13.95				
er			31.5		7.875				
PLOT TOTAL					21.825		TOTAL	86.735	

$$\frac{86.735}{80.05} \times 100 = 108.90$$

GENERAL INSTRUCTIONS

Print one legible copy in field for each trend plot. File with Range Trend Plot Location Data (Form 4412-24) and photographs (see Bureau Manual 4115).

SPECIFIC INSTRUCTIONS

(Items not listed are self-explanatory)

PART I - PLOT DATA BY SQUARE FOOT SECTION

Record data for each 1' x 1' section of the plot

- Column (a) - Use four letter plant symbol
- Columns (b) & (c) - Enter number
- Column (d) - Estimate - 1/16 sq. feet units covered by specie
- Column (e) - Measure - Total sq. inches covered by specie

Note: Use either estimate or measurement for each species. Do not use both.

Total - Total data for each specie and enter (Part - II)

PART II - SUMMARY OF PLOT DATA

Column (e) - Measurement - $\frac{\text{Measured sq inches (Column (e))}}{1296 (3' \times 3' \text{ plot}) \text{ or } 3600 (5' \times 5' \text{ plot})} \times 100 = \text{cover}$

Column (f) - Estimate - Multiply Column (d) by 0.7 (3' x 3' plot) or 0.25 (5' x 5' plot)

Column (g) - Composition - $\frac{\text{Cover (Column (f)) of specie}}{\text{Total cover (of plot in Column (f))}} \times 100 = \text{percent composition}$

U.S. DEPARTMENT OF THE INTERIOR
BUREAU OF LAND MANAGEMENT

EXAMINER K. Snyder
BLM ADMIN UNIT (ST/DI/RA/PL) Pony Express
ALLOTMENT west Grassy
PASTURE _____

TRANSECT DATA SHEET

TRANSECT NUMBER 546

DATE (YYMMDD) 8:9:07:24

GROUND COVER DATA			HITS	PLANT LIST			SOIL FACTOR ITEMS	RATING
BASAL	DOT COUNT			SYMBOL	SYMBOL	SYMBOL		
BARE GROUND			19				SOIL MOVEMENT	
PERISTENT LITTER . .			4				SURFACE LITTER	
NON-PERSISTENT LITTER			6				SURFACE ROCK	
GRAVEL (2mm - 3") . .			18				PEDESTALLING	
COBBLE (3" - 10") . .			2				FLOW PATTERNS	
STONE (> 10") . . .			2				RILLS	
BEDROCK			49				GULLIES	
							SOIL SURFACE FACTOR TOTAL .	

LEVEL OF TRANSECT HIT					HITS	LEVEL OF TRANSECT HIT					HITS
BASAL	CANOPY 1	CANOPY 2	CANOPY 3	DOT COUNT		BASAL	CANOPY 1	CANOPY 2	CANOPY 3	DOT COUNT	
ARNO					28						
EULA					2						
ELSA					10						
ATCO					6						
CHV1					2						
POSE					3						
					51						



1985 & 1983

READINGS # 6&5

PLOT # 5

UNIT STATES
DEPARTMENT OF THE INTERIOR
BUREAU OF LAND MANAGEMENT

District
SALT LAKE
Resource Area
PONY EXPRESS
Date and Time **7/8/85 10:30**
Examiner **ROYCE**

RANGE TREND PLOT DATA

Allotment Name **WEST GRASSY
PLOT #5**

NUMBER	
ALLOTMENT	PLOT
	5

PART I - PLOT DATA BY SQUARE FOOT SECTION

SPECIES			MATURE PLANTS	SEEDLINGS	1/16 UNITS	TOTAL SQ. INCHES	MATURE PLANTS	SEEDLINGS	1/16 UNITS	TOTAL SQ. INCHES	MATURE PLANTS	SEEDLINGS	1/16 UNITS	TOTAL SQ. INCHES	MATURE PLANTS	SEEDLINGS	1/16 UNITS	TOTAL SQ. INCHES	MATURE PLANTS	SEEDLINGS	1/16 UNITS	TOTAL SQ. INCHES	
GRASS	FORB	BROWSE																					
(a)	(b)	(c)	(b)	(c)	(d)	(e)	(b)	(c)	(d)	(e)	(b)	(c)	(d)	(e)	(b)	(c)	(d)	(e)	(b)	(c)	(d)	(e)	
	ARTR				.5				1.5														
	LITTER				6				2					1				2.5				3	
	ARTR		1		12				5					.75		1		4					
	LITTER				3.5				2					1				6				3.5	
	ARTR				6				.25					.75				2.5				4	
	CELA										2			.25				.75					
	LITTER				4				6					4				2				2	
	ARTR				.25									3				2		1		11	
	CELA						1		.25									.75					
	LITTER				2.5				2					9				.5				1	
	TEGA				3																		
	CELA								.25														
	ARTR																					.25	
	LITTER				9.5				2					10				0				3	

PART II - SUMMARY OF PLOT DATA							PART III - PLOT DIAGRAM	
LIST BY SPECIES (a)	NUMBER		1/16 SQ. FT. UNITS (estimate) (d)	TOTAL SQ. IN. (measurement) (e)	PERCENT			
	MATURE PLANTS (b)	SEED-LINGS (c)			COVER (f)	COMPOSITION (g)		
Grasses (Basal Cover)								
TOTAL								
Forbs (Basal Cover)								
TOTAL								
Browse (Foliage Cover)								
ARTR	3		52.25		13.06			
CELA	6		10.00		2.5			
TOTAL								
Litter			93.0		20.75			
PLOT TOTAL								

PART IV - TREND INDEX SUMMARY	
Composition, Key Species (percent)	100.00
Cover, Live Vegetation (percent)	15.56
Seedlings, Key Species (number)	0
Litter, Plot Total (percent)	20.75
TOTAL	136.31

Key Species - ARTR CELA

$\frac{136.31}{80.05} = 170.2$

GENERAL INSTRUCTIONS

Print one legible copy in field for each trend plot. File with Range Trend Plot Location Data (Form 4412-24) and photographs (see Bureau Manual 4115).

SPECIFIC INSTRUCTIONS

(Items not listed are self-explanatory)

PART I - PLOT DATA BY SQUARE FOOT SECTION

Record data for each 1' x 1' section of the plot

- Column (a) - Use four letter plant symbol
- Columns (b) & (c) - Enter number
- Column (d) - Estimate - 1/16 sq. feet units covered by specie
- Column (e) - Measure - Total sq. inches covered by specie
- Note: Use either estimate or measurement for each species. Do not use both.
- Total - Total data for each specie and enter (Part - II)

PART II - SUMMARY OF PLOT DATA

Column (e) - Measurement - $\frac{\text{Measured sq inches (Column (e))}}{1296 (3' \times 3' \text{ plot}) \text{ or } 3600 (5' \times 5' \text{ plot})} \times 100 = \text{cover}$

Column (f) - Estimate - Multiply Column (d) by 0.7 (3' x 3' plot) or 0.25 (5' x 5' plot)

Column (g) - Composition - $\frac{\text{Cover (Column (f)) of specie}}{\text{Total cover (of plot in Column (f))}} \times 100 = \text{percent composition}$

UNITED STATES
 DEPARTMENT OF THE INTERIOR
 BUREAU OF LAND MANAGEMENT

District
SALT LAKE
 Resource Area
PONY EXPRESS
 Date and Time **6-17-83 10:00**
 Examiner **ROYCE**

RANGE TREND PLOT DATA

Allotment Name **WEST GRASSY
 PLOT 5**

NUMBER
 ALLOTMENT PLOT
 5

PART I - PLOT DATA BY SQUARE FOOT SECTION

SPECIES			MATURE PLANTS	SEEDLINGS	1/16 UNITS	TOTAL SQ. INCHES	MATURE PLANTS	SEEDLINGS	1/16 UNITS	TOTAL SQ. INCHES	MATURE PLANTS	SEEDLINGS	1/16 UNITS	TOTAL SQ. INCHES	MATURE PLANTS	SEEDLINGS	1/16 UNITS	TOTAL SQ. INCHES	MATURE PLANTS	SEEDLINGS	1/16 UNITS	TOTAL SQ. INCHES
GRASS	FORB	BROWSE																				
(a)	(a)	(a)	(b)	(c)	(d)	(e)	(b)	(c)	(d)	(e)	(b)	(c)	(d)	(e)	(b)	(c)	(d)	(e)	(b)	(c)	(d)	(e)
		TEGL			8.5																	
BRIE			40		2.0		8		0.3		80		4.0		3		1		40		2.0	
		LITTER			1.0				1.0				3.0				2.5				2.0	
BRIE		ARTR			.3								1		1		1.0		1		5.5	
		CELA	10		.5		40		2.0		80		4.0		20		1.0		80		4.0	
		TEGL			3.0						3		7.0									
		LITTER			.5				1.0				2.0				1.0				1.0	
POSE		ARTR			8.0				.3				.4		1		3.0					
BRIE			1		.5																	
		CELA	10		.5		4		.1		5		.1		10		.5		10		.5	
		LITTER			1.0				.1				1.0				2.0				.1	
BRIE			60		3.0		20		1.0		5		.2		20		1.0		10		.5	
		ARTR	1		12.0				7.0								.3					
		CELA			.5																	
		LITTER			0.0				1.0				1.0				3.0				1.0	
BRIE		ARTR			.3				1.0												1.0	
			80		4.0		10		.5		10		.5		80		4.0		20		1.0	
		LITTER			1.0				2.0				1.0				2.0				2.0	

TOP

PART II - SUMMARY OF PLOT DATA							PART III - PLOT DIAGRAM	
LIST BY SPECIES (a)	NUMBER		1/16 SQ. FT. UNITS (estimate) (d)	TOTAL SQ. IN. (measurement) (e)	PERCENT			
	MATURE PLANTS (b)	SEED-LINGS (c)			COVER (f)	COMPO-SITION (g)		
Grasses (Basal Cover)								
BRTE	755		37.8		9.5	37.4		
POSE	1		.5		.1	.4		
TOTAL								
Forbs (Basal Cover)								
TOTAL								
Browse (Foliage Cover)								
TEGL			11.5		2.9	11.4		
ARTR	4		40.1		10	39.4		
CELA	4		11.5		2.9	11.4		
TOTAL					25.4			
Litter			31.2		7.8			
PLOT TOTAL						100.0		
							PART IV - TREND INDEX SUMMARY	
							Composition, Key Species (percent)	50.8
							Cover, Live Vegetation (percent)	25.4
							Seedlings, Key Species (number)	—
							Litter, Plot Total (percent)	7.8
							TOTAL	84

GENERAL INSTRUCTIONS

Print one legible copy in field for each trend plot. File with Range Trend Plot Location Data (Form 4412-24) and photographs (see Bureau Manual 4115).

SPECIFIC INSTRUCTIONS

(Items not listed are self-explanatory)

PART I - PLOT DATA BY SQUARE FOOT SECTION

Record data for each 1' x 1' section of the plot

Column (a) - Use four letter plant symbol

Columns (b) & (c) - Enter number

Column (d) - Estimate - 1/16 sq. feet units covered by specie

Column (e) - Measure - Total sq. inches covered by specie

Note: Use either estimate or measurement for each species. Do not use both.

Total - Total data for each specie and enter (Part - II)

PART II - SUMMARY OF PLOT DATA

Column (e) - Measurement - $\frac{\text{Measured sq. inches (Column (e))}}{1296 (3' \times 3' \text{ plot}) \text{ or } 3600 (5' \times 5' \text{ plot})} \times 100 = \text{cover}$

Column (f) - Estimate - Multiply Column (d) by 0.7 (3' x 3' plot) or 0.25 (5' x 5' plot)

Column (g) - Composition - $\frac{\text{Cover (Column (f)) of specie}}{\text{Total cover (of plot in Column (f))}} \times 100 = \text{percent composition}$

Handwritten calculation: $\frac{84}{30.05} = 10520$

