



1981 & 1976

READINGS # 4&3

PLOT # 5

UNITED STATES
 DEPARTMENT OF THE INTERIOR
 BUREAU OF LAND MANAGEMENT

RANGE TREND PLOT DATA

District SALT LAKE
 Resource Area Pony Express
 Date and Time 9-2-81 2:45pm
 Examiner Kidd

Allotment Name

West Grassy

NUMBER

ALLOTMENT

PLOT

North

5

PART I - PLOT DATA BY SQUARE FOOT SECTION

SPECIES			MATURE PLANTS	SEEDLINGS	1/16 UNITS	TOTAL SQ. INCHES	MATURE PLANTS	SEEDLINGS	1/16 UNITS	TOTAL SQ. INCHES	MATURE PLANTS	SEEDLINGS	1/16 UNITS	TOTAL SQ. INCHES	MATURE PLANTS	SEEDLINGS	1/16 UNITS	TOTAL SQ. INCHES	MATURE PLANTS	SEEDLINGS	1/16 UNITS	TOTAL SQ. INCHES
GRASS	FORB	BROWSE																				
	(a)		(b)	(c)	(d)	(e)	(b)	(c)	(d)	(e)	(b)	(c)	(d)	(e)	(b)	(c)	(d)	(e)	(b)	(c)	(d)	(e)
	LITTER		■	■		■	■	■		■	■	■		■	■	■		■	■	■		■
	LITTER		■	■		■	■	■		■	■	■		■	■	■		■	■	■		■
	LITTER		■	■		■	■	■		■	■	■		■	■	■		■	■	■		■
	LITTER		■	■		■	■	■		■	■	■		■	■	■		■	■	■		■

PART II - SUMMARY OF PLOT DATA							PART III - PLOT DIAGRAM	
LIST BY SPECIES (a)	NUMBER		1/16 SQ. FT. UNITS (estimate) (d)	TOTAL SQ. IN. (measurement) (e)	PERCENT			
	MATURE PLANTS (b)	SEED-LINGS (c)			COVER (f)	COMPOSITION (g)		
Grasses (Basal Cover)								
<i>Pose</i>	1		1		.03	14		
<i>brte</i>	50							
TOTAL								
Forbs (Basal Cover)								
TOTAL								
Browse (Foliage Cover)								
<i>Eula</i>	3		9		2.25	29.9		
<i>Ar no</i>	3		17		4.25	56.4		
<i>tc gl</i>			4		1	13.3		
TOTAL								
Litter			8		2			
PLOT TOTAL						100		

PART IV - TREND INDEX SUMMARY	
Composition, Key Species (percent)	90.36.3
Cover, Live Vegetation (percent)	75.83
Seedlings, Key Species (number)	12
Litter, Plot Total (percent)	42
TOTAL	10695.83

Key sp.
Eula
Ar no
tc gl

75.83
80.05 = 120.6

GENERAL INSTRUCTIONS

Print one legible copy in *Pen* for each trend plot. File with Range Trend Plot Location Data (Form 4412-24) and photographs (see Bureau Manual 415).

SPECIFIC INSTRUCTIONS

(Items not listed are self-explanatory)

PART I - PLOT DATA BY SQUARE FOOT SECTION

Record data for each 1' x 1' section of the plot

- Column (a) - Use four letter plant symbol
- Columns (b) & (c) - Enter number
- Column (d) - Estimate - 1/16 sq. feet units covered by specie
- Column (e) - Measure - Total sq. inches covered by specie
- Note: Use either estimate or measurement for each species. Do not use both.
- Total - Total data for each specie and enter (Part - II)

PART II - SUMMARY OF PLOT DATA

Column (e) - Measurement - $\frac{\text{Measured sq inches (Column (e))}}{1296 (3' \times 3' \text{ plot}) \text{ or } 3600 (5' \times 5' \text{ plot})} \times 100 = \text{cover}$

Column (f) - Estimate - Multiply Column (d) by 0.7 (3' x 3' plot) or 0.25 (5' x 5' plot)

Column (g) - Composition - $\frac{\text{Cover (Column (f)) of specie}}{\text{Total cover (of plot in Column (f))}} \times 100 = \text{percent composition}$



DATE 9-2-81
DIST Salt Lake
ALLOT West Grassy
PASTURE North
PLOT NO. 5



DATE 9-2-81
DIST Salt Lake
ALLOT West Grassy
PASTURE North
PLOT NO. 5

TRANSECT 5
June 9, 1976



TRANSECT 5
Sept. 2, 1981

1970 & 1969

READINGS # 2&1

PLOT # 5

UNITED STATES
DEPARTMENT OF THE INTERIOR
BUREAU OF LAND MANAGEMENT

District Salt Lake
Date 8/17/70
Examiner J. Perkins

RANGE TREND PLOT DATA

Allotment <u>Diamond-T</u>	Pasture <u>South</u>	Key Species	Elevation
Grazing System <u>deferred rotation</u>	PLOT		Slope
Treatment	Number <u>5</u>	Size <u>5x5</u>	<u>AKNO</u>
	Vegetative Type <u>Sage-grass</u>	<u>Eula</u>	Exposure <u>West</u>

LIST BY SPECIES (a)	NUMBER		1/16 SQ. FT. UNITS (estimate) (d)	TOTAL SQ. IN. (measure- ment) (e)	PERCENT		SIZE OF INDIVIDUAL PLANTS (A = TT ab) (h)
	MATURE PLANTS (b)	SEED- LINGS (c)			COVER (f)	COMPO- SITION (g)	
Grasses (Basal Cover)							
<u>Orly</u>	<u>1</u>		<u>3</u>		<u>.75</u>	<u>5.3</u>	<u>3</u>
<u>Eula</u>	<u>2</u>		<u>1</u>		<u>.25</u>	<u>7.8</u>	<u>--</u>
TOTAL							
Forbs (Basal Cover)							
TOTAL							
Browse (Foliage Cover)							
<u>AKNO</u>	<u>5</u>		<u>30.5</u>		<u>7.62</u>	<u>53.4</u>	<u>142-518</u>
<u>Eula</u>	<u>4</u>	<u>2</u>	<u>7.5</u>		<u>1.88</u>	<u>13.2</u>	<u>5-1--</u>
<u>Atra</u>	<u>1</u>		<u>15.0</u>		<u>3.75</u>	<u>26.3</u>	<u>2</u>
TOTAL							<u>13</u>
Litter			<u>16</u>		<u>4.0</u>		<u>8-7-</u>
PLOT TOTAL					<u>18.25</u>	<u>100</u>	

Comments

TREND INDEX SUMMARY

Composition, Key Species (percent)	<u>40.6</u>
Cover, Live Vegetation (percent)	<u>14.25</u>
Seedlings, Key Species (number)	<u>2.0</u>
Litter, Plot Total (percent)	<u>4.0</u>
TOTAL	<u>86.85</u>

86.85
80.05 ² 108

SPECIFIC INSTRUCTIONS

Column

- (d) Each 1/16 sq. ft. unit = 0.7 percent, 3 x 3 ft. plot; 0.25 percent, 5 x 5 ft. plot
- (h) Record length and breadth - Divide by 2 for major and minor radii
1. Circle understory plants
 2. Do not use understory plants in computing cover
 3. In Trend Index Summary, cover live vegetation may be either total plot cover or cover of key species only

GENERAL INSTRUCTIONS

APPARENT TREND DATA

On-site Analysis (write concise narration of items listed below)

1. Soil stability, active erosion
2. Relative plant composition:
 - a. desirable vs. undesirable
 - b. protected vs. unprotected
3. Vigor - size, number of culms, growth, seedheads, etc
4. Reproduction
5. Evidence of grazing - past and present
6. Apparent trend

Revisitation Analysis

Compare with previous analysis. Note change in species, soil cover, litter, amount of erosion, etc. Use extra sheets, if necessary.

1. Moderate sheet & gully erosion.
2. Undesirable: Tesp, Hagl, Bite. Most plants are unprotected.
3. Vigor is fair (good on Eula)
4. Reproduction fair on Eula & grasses, poor on other species.
5. Animal droppings & grass are cropped off quite heavily.
6. Static.

UNITED STATES
DEPARTMENT OF THE INTERIOR
BUREAU OF LAND MANAGEMENT

District
Salt Lake

Date
4-3-69

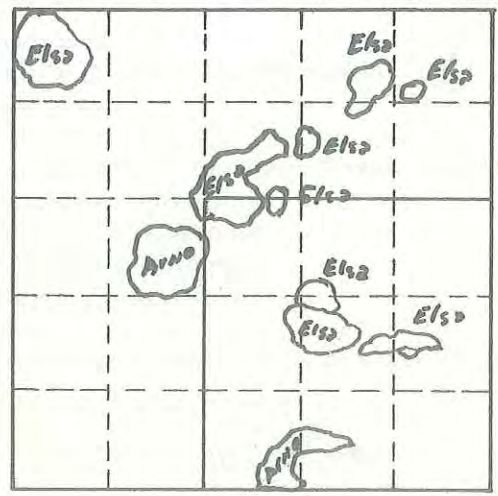
Examiner
Decker King

RANGE TREND PLOT DATA

Allotment <i>Diamond T Livestock Co.</i>	Pasture <i>North</i>	Key Species <i>Arno</i>	Elevation <i>5300</i>
Grazing System <i>Deferred Grazing</i>	PLOT Number <i>5</i> Size <i>5'</i>		Slope <i>8%</i>
Treatment <i>Grazed</i>	Vegetative Type <i>B 4(1) Arno Elsa Arco</i>		Exposure <i>East-So.</i>

LIST BY SPECIES (a)	NUMBER		1/16 SQ. FT. UNITS (estimate) (d)	TOTAL SQ. IN. (measurement) (e)	PERCENT		SIZE OF INDIVIDUAL PLANTS (A = TT ab) (h)
	MATURE PLANTS (b)	SEED- LINGS (c)			COVER (f)	COMPO- SITION (g)	
Grasses (Basal Cover) <i>Elsa</i>	<i>10</i>		<i>25</i>				
TOTAL							
Forbs (Basal Cover) <i>NONE</i>							
TOTAL							
Browse (Foliage Cover) <i>Arno</i>	<i>2</i>		<i>12</i>				
TOTAL	<i>12</i>		<i>37</i>				
Litter							
PLOT TOTAL							

Comments
Plot is located 50 paces red steel post on west side of the road that runs northerly through Sec. 15 T. 2N. R11W.



TREND INDEX SUMMARY

Composition, Key Species (percent)	
Cover, Live Vegetation (percent)	
Seedlings, Key Species (number)	
Litter, Plot Total (percent)	
TOTAL	

UNITED STATES
DEPARTMENT OF THE INTERIOR
BUREAU OF LAND MANAGEMENT

District
SALT LAKE
Date
8/12/69
Examiner
CARPENTER PERKINS

RANGE TREND PLOT DATA

23 Steps East of Red Post

Allotment <u>Diamond-T</u>	Pasture <u>South</u>	Key Species <u>Arms-Eula</u>	Elevation
Grazing System <u>DEFERRED ROTATION</u>	PLOT Number <u>5</u> Size <u>5x5</u>		Slope <u>7%</u>
Treatment	Vegetative Type <u>SAGE BRUSH - GRASS</u>	Exposure <u>WEST</u>	

LIST BY SPECIES (a)	NUMBER		1/16 SQ. FT. UNITS (estimate) (d)	TOTAL SQ. IN. (measure- ment) (e)	PERCENT		SIZE OF INDIVIDUAL PLANTS (A = TT ab) (h)
	MATURE PLANTS (b)	SEED- LINGS (c)			COVER (f)	COMPO- SITION (g)	
Grasses (Basal Cover)							
<u>Orky Indimille</u>	<u>1</u>		<u>3.5</u>		<u>.875</u>	<u>6.1</u>	
TOTAL			<u>3.5</u>				
Forbs (Basal Cover)							
TOTAL							
Browse (Foliage Cover)							
<u>Arms (Shrub)</u>	<u>6</u>		<u>27</u>		<u>6.75</u>	<u>49.0</u>	<u>17-4-2-3-1 11</u>
<u>Fura (wonder for)</u>	<u>3</u>		<u>7.5</u>		<u>2.375</u>	<u>17.3</u>	<u>1-5 3 1/2</u>
<u>Atco (Shrub)</u>	<u>1</u>		<u>15</u>		<u>3.75</u>	<u>27.3</u>	<u>17-3</u>
TOTAL			<u>51.5</u>		<u>13.750</u>	<u>100.0</u>	
Litter							
PLOT TOTAL							

27.3
54.5
9.1
90.9

Comments

TREND INDEX SUMMARY

Composition, Key Species (percent)	<u>66.3</u>
Cover, Live Vegetation (percent)	<u>13.75</u>
Seedlings, Key Species (number)	
Litter, Plot Total (percent)	
TOTAL	<u>80.05</u>

80.05
80.05 = 100%



DATE 8-17-70
DIST SALT LAKE
ALLOT \diamond -T
PASTURE SOUTH
PLOT NO. 5

TRANSECT 5
Sept. 17, 1969

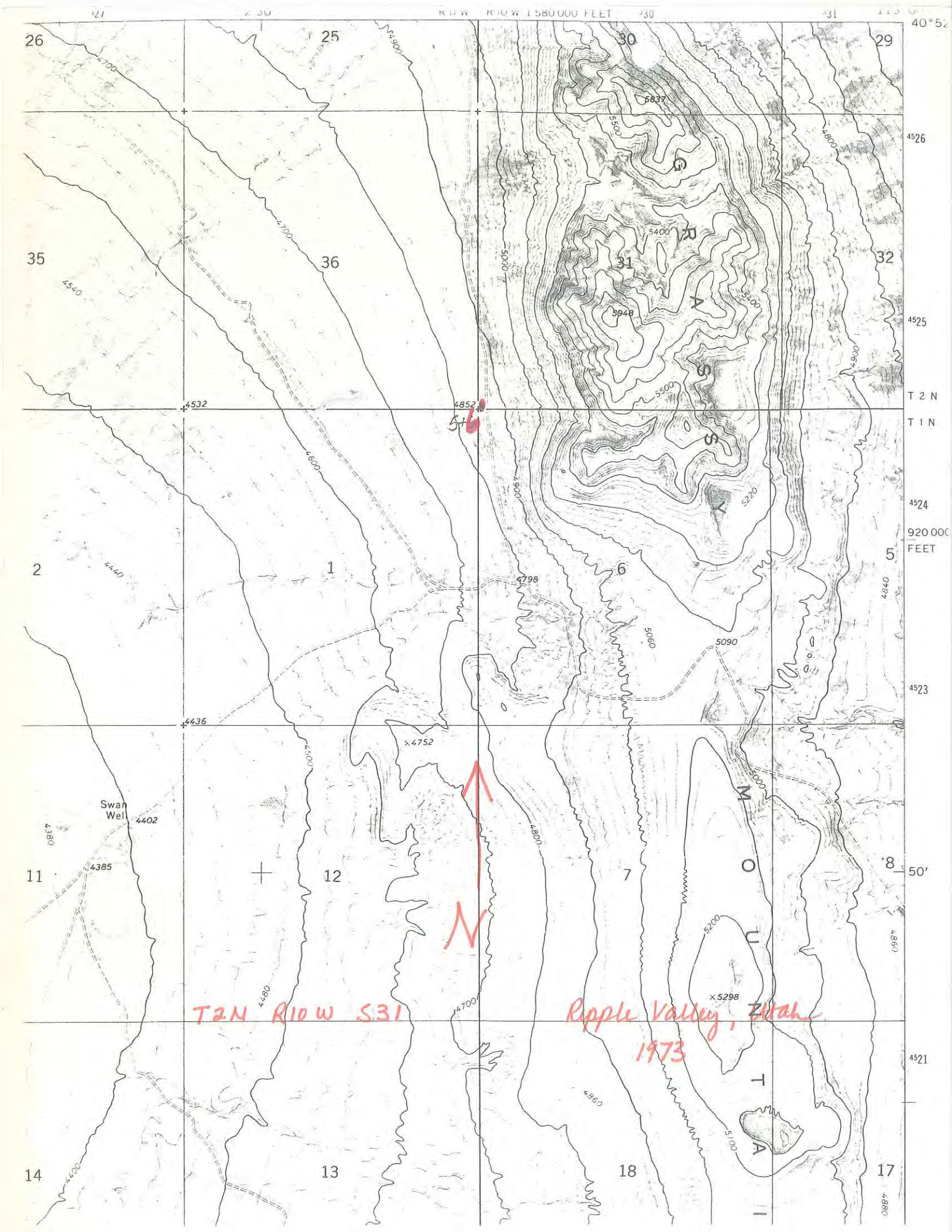


LAKESIDE
SALT LAKE NO 2
DATE
PASTURE
ALLOT
PLOT



LAKESIDE
SALT LAKE NO 2
DATE
PASTURE
ALLOT
PLOT 5

TRANSECT 5
August 17, 1970



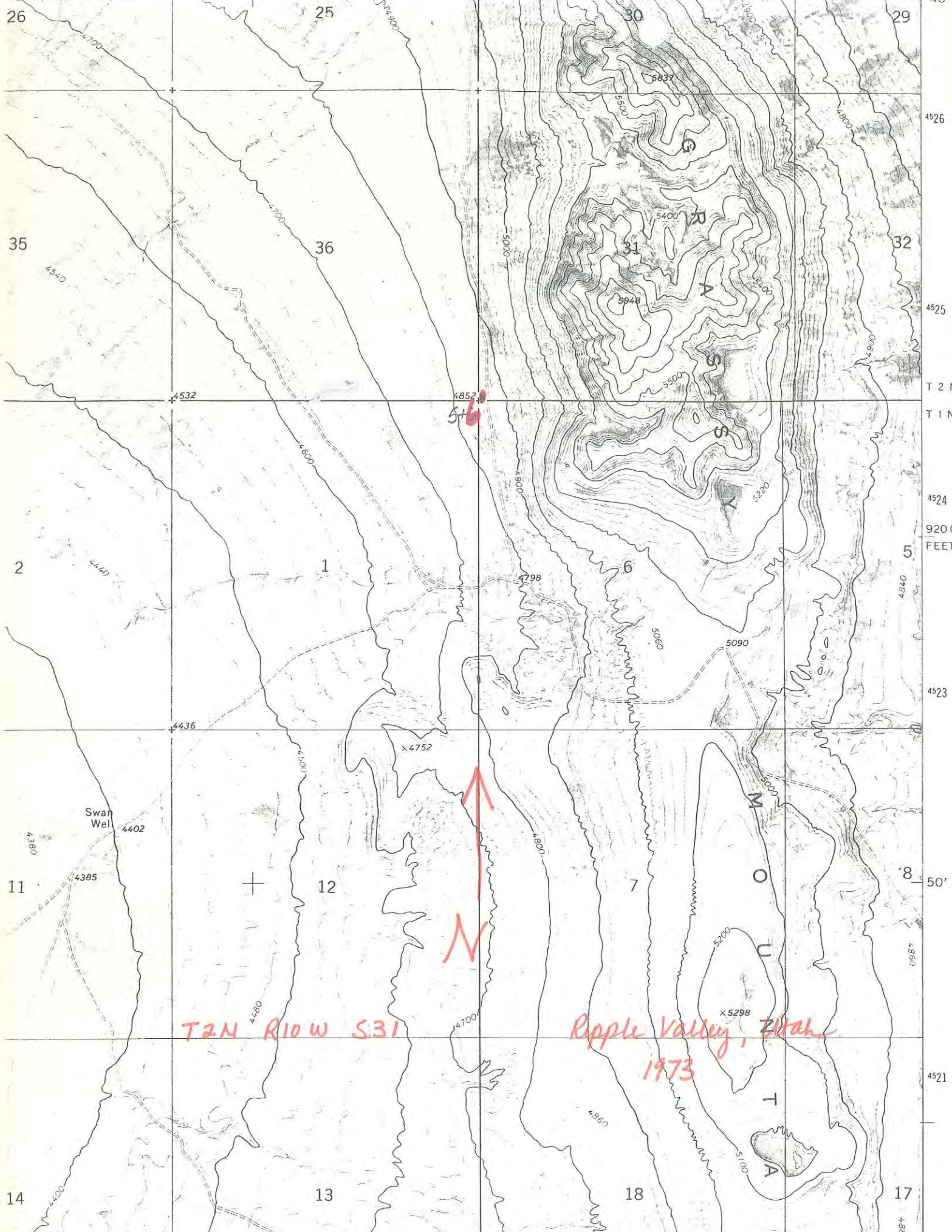
St 6



T2N R10W S31

Ripple Valley, Utah
1973

Swan Well



WEST GRASSY

Range Study #1

The plot is 46 paces southeast of $N\frac{1}{4}$ corner of Section 7, T. 1 N., R. 11 W.
A green, steel post marks the $\frac{1}{4}$ corner peg.

Range Study #2

The plot is 74 paces north of $N\frac{1}{4}$ corner of Section 1, T. 1 N., R. 11 W.
A green, steel post marks $\frac{1}{4}$ corner.

Range Study #3

The study is located .2 miles due east of $N\frac{1}{4}$ corner of Section 6,
T. 1 N., R. 11 W. Plot #3 is 20 paces north of red, steel post.

Range Study #4

Same procedure as #3. Plot #4 is 20 paces south of red, steel post.

Range Study #5

The plot is 23 steps east of the NW section corner of Section 6, T. 1 N.,
R. 10 W. The section corner is marked by a red, steel post.

Range Study #6

The plot is 33 steps north of the SW section corner of Section 31, T. 2 N.,
R. 10 W. The section corner is marked by a red, steel post.

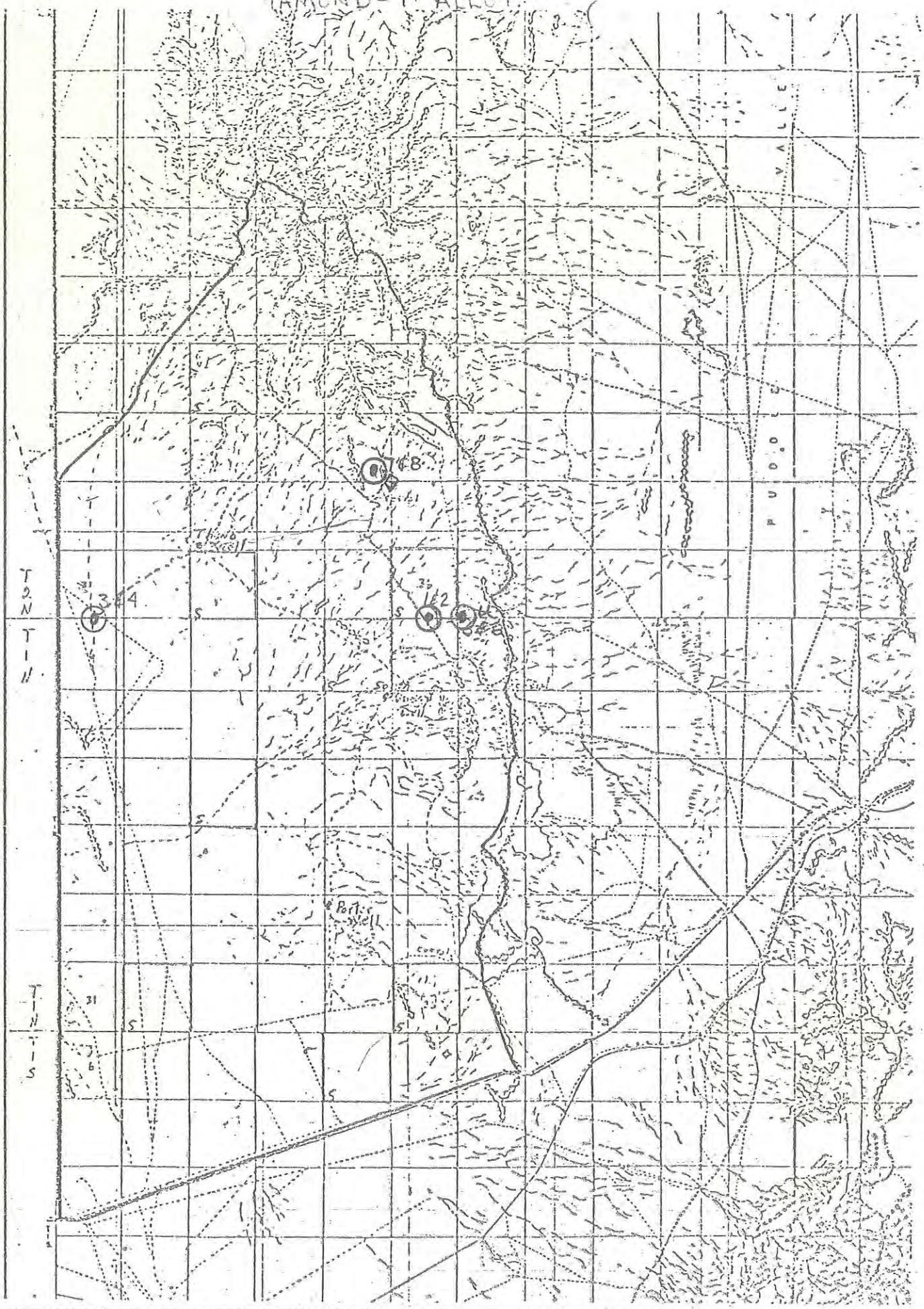
Range Study #7

From study plots 1 and 2, follow the road northeast for ^{3 1/2} miles to an
old corral. Then, north $1\frac{1}{2}$ mile to a red, steel post on the side of the
road. The plot is 51 steps easterly from the red post.

Range Study #8

Same procedure as #7. Plot is 51 steps westerly from the red post.

ALMOND-T. ALLOT



u Utilization Case O - RANGE STUDY PLOTS

Key Area Location

District Salt Lake Date 7-24-89

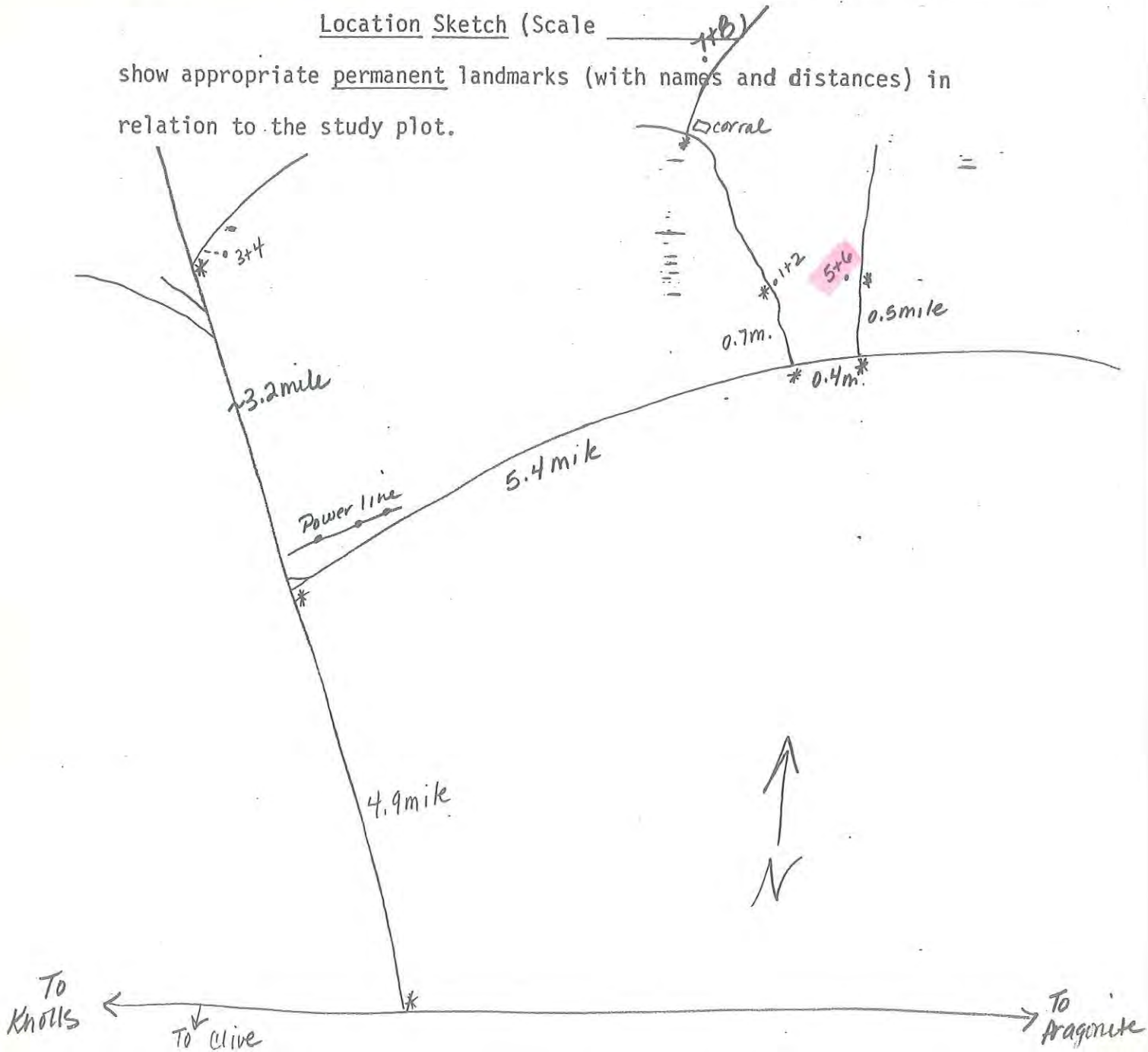
Allotment West Grassy Aerial Photo # _____

Prepared by K. Snyder or 7½' Quad Ripple Valley - Gray Back Hills -
or Orthophoto Grassy Mtns.

Photo or Map Date 1973-1973-1973

Location Sketch (Scale _____)

show appropriate permanent landmarks (with names and distances) in relation to the study plot.



ALLOTMENT	WEST GRASSY		LOCATION		TREND INDEX SUMMARY
	DATE		T2N R10W SEC. 31		
PLOT	WG-6		1/16 SQ. FT. UNITS	PERCENT	
List by Species	Mature	Seedlings	Cover	Composition	Composition, Key Species
Grasses (basal cover)					79
ELSA	4		1.875	15.8	11.8
					0
					0
					0
					0
TOTAL	4	0	1.875	15.8	90.8
Forbs (basal cover)					
TOTAL	0	0	0	0	
Browse (foliage cover)					
ARNO	2		7.125	60	
EULA	1		0.375	3.2	
ATCO	3		1.75	14.7	
ARSP	1		0.75	6.3	
TOTAL	7	0	10	84.2	
LITTER					
PLOT TOTAL	11	0	11.875	100	

ALLOTMENT DATE PLOT	WEST GRASSY 8/17/1970 WG-6		LOCATION T2N R10W SEC. 31		TREND INDEX SUMMARY Composition, Key Species Cover, Live Vegetation Seedlings, Key Species Litter, Plot Total TOTAL	
	NUMBER Mature Seedlings		PERCENT Cover Composition			
List by Species Grasses (basal cover)			1/16 SQ. FT. UNITS			
ELSA	2		12	3	25	81.3 12 0 3.88 97.18
TOTAL	2	0	12	3	25	
Forbs (basal cover)						
TOTAL	0	0	0	0	0	
Browse (foliage cover)						
ARNO	2		25.5	6.38	53.2	
EULA	1		1.5	0.37	3.1	
ATCO	2		6.5	1.62	13.5	
ARSP	2		2.5	0.63	5.25	
TOTAL	7	0	36	9	75.05	
LITTER			15.5	3.88		
PLOT TOTAL	9	0	48	15.88	100.05	

ALLOTMENT	WEST GRASSY		LOCATION		PERCENT	TREND INDEX SUMMARY
	DATE	PLOT	T2N R10W SEC. 31			
	9/2/1981	WG-6				
List by Species	NUMBER		1/16 SQ. FT. UNITS	Cover	Composition	Seedlings, Key Species
	Mature	Seedlings				
Grasses (basal cover)						
ELSA	3	1	20	5	52.1	96.4
POSE	1	2	0.5	0.13	1.4	9.6
SIHY	1		0.1	0.03	0.3	1
						2
						109
TOTAL	5	3	20.6	5.16	53.8	
Forbs (basal cover)						
HAGL		8				
TOTAL	0	8	0	0	0	
Browse (foliage cover)						
EULA	1		1	0.25	2.6	
ARNO	2		16	4	41.7	
TEGL		1	7	0.18	1.9	
TOTAL	3	1	24	4.43	46.2	
LITTER				2		
PLOT TOTAL	8	12	44.6	11.59	100	

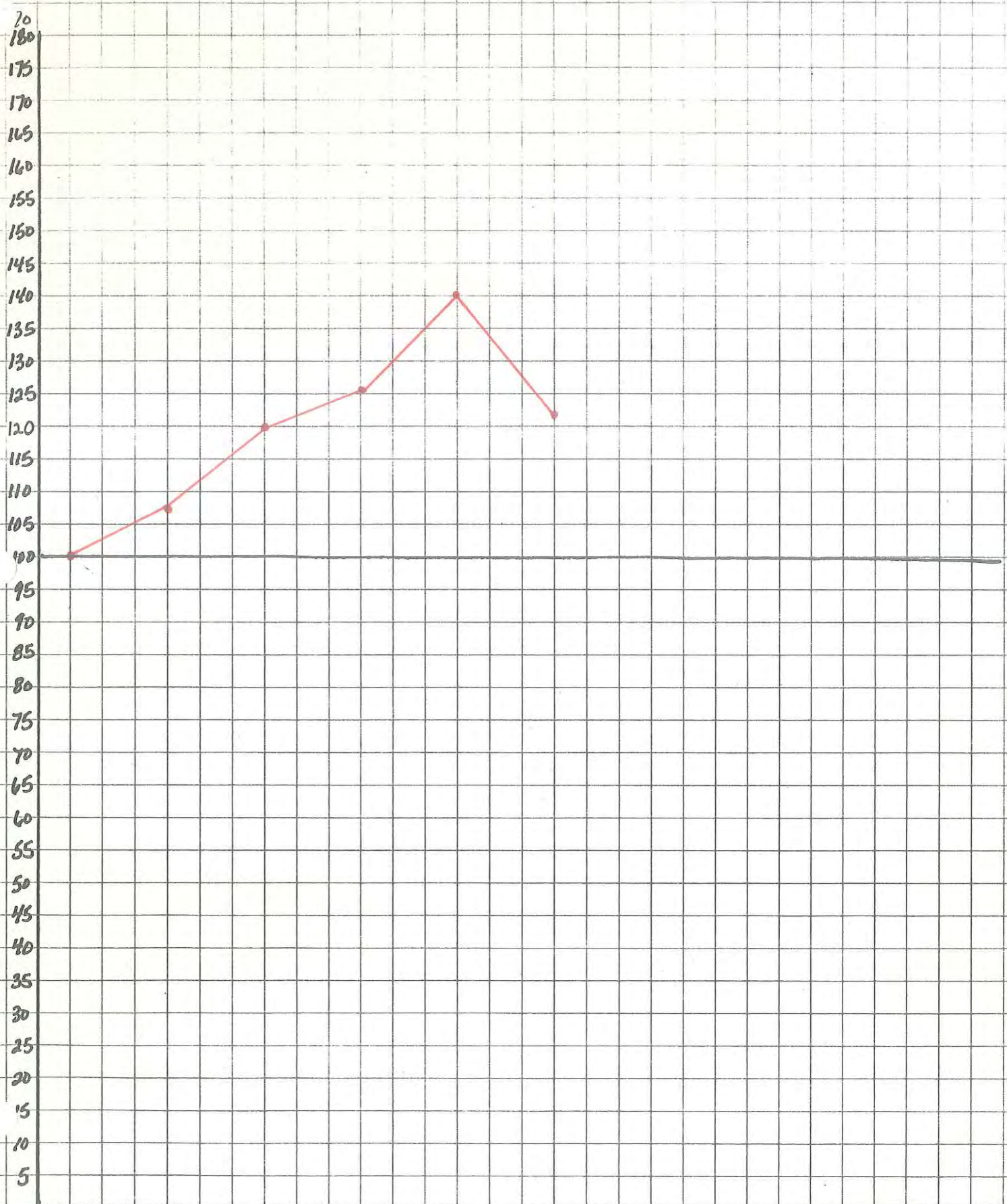
ALLOTMENT	WEST GRASSY		LOCATION		TREND INDEX SUMMARY
	DATE	PLOT	T2N R10W SEC. 31		
	6/17/1983	WG-6			
<u>List by Species</u>	<u>NUMBER</u>	<u>1/16 SQ. FT</u>	<u>PERCENT</u>		
<i>Grasses (basal cover)</i>	<u>Mature</u>	<u>UNITS</u>	<u>Cover</u>	<u>Composition</u>	<u>Composition, Key Species</u>
	<u>Seedlings</u>				<u>Cover, Live Vegetation</u>
ELSA	6	47.8	12	48	<u>Seedlings, Key Species</u>
BRTE	270	14.1	3.5	14	<u>Litter, Plot Total</u>
POSE	1	1	0.3	1.2	TOTAL
					82.8
					25
					0
					6.7
TOTAL	277	62.9	15.8	63.2	114.5
<i>Forbs (basal cover)</i>					
TOTAL	0	0	0	0	
<i>Browse (foliage cover)</i>					
ARTR	3	32.3	8.1	32.4	
ATCO		1.6	0.4	1.6	
CELA	1	2.5	0.6	2.4	
CHVI		0.2	0.1	0.4	
TOTAL	4	36.6	9.2	36.8	
<u>LITTER</u>		26.7	6.7		
PLOT TOTAL	281	99.5	31.7	100	

ALLOTMENT	WEST GRASSY		LOCATION			
DATE	8/28/1985		T2N R10W SEC. 31			
PLOT	WG-6					
List by Species Grasses (basal cover)	NUMBER		1/16 SQ. FT UNITS	PERCENT		TREND INDEX SUMMARY
	Mature	Seedlings		Cover	Composition	
ELSA	6		33.25	8.31	40.3	90.3
POA	1		1	0.25	1	20.6
						0
						15.58
						126.48
						TOTAL
TOTAL	7	0	34.25	8.56	41.3	
Forbs (basal cover)						
TOTAL	0	0	0	0	0	
Browse (foliage cover)						
ARTR	2		40	10	48.5	
ATCO			6.25	1.56	7.6	
CELA	1		1.25	0.31	1.5	
CHVI	1		0.6	0.15	1	
TOTAL	4	0	48.1	12.02	58.6	
LITTER						
PLOT TOTAL	11	0	82.35	36.16	99.9	

ALLOTMENT	WEST GRASSY		LOCATION						
	DATE		T2N R10W SEC. 31						
PLOT	WG-6								
	NUMBER		1/16 SQ. FT UNITS	PERCENT		TREND INDEX SUMMARY			
List by Species	Mature	Seedlings		Cover	Composition	Composition, Key Species	Cover, Live Vegetation	Seedlings, Key Species	Litter, Plot Total
Grasses (basal cover)									
ELSA	8		63	15.75	43.45				74.82
POSE	5		1.5	0.375	1.03				29.5
									0
									6.75
									111.07
TOTAL	13	0	64.5	16.125	44.48				
Forbs (basal cover)									
TOTAL	0	0	0	0	0				
Browse (foliage cover)									
ARNO	3		44.5	11.125	30.69				
ATCO	0		3	0.75	2.07				
EULA	2		1	0.25	0.68				
CHVI	1		5	1.25	3.44				
TOTAL	6	0	53.5	13.375	36.88				
LITTER			27	6.75					
PLOT TOTAL	19	0	118	36.25	81.36				

West Grassy -06

Trend Index Summary by Percent



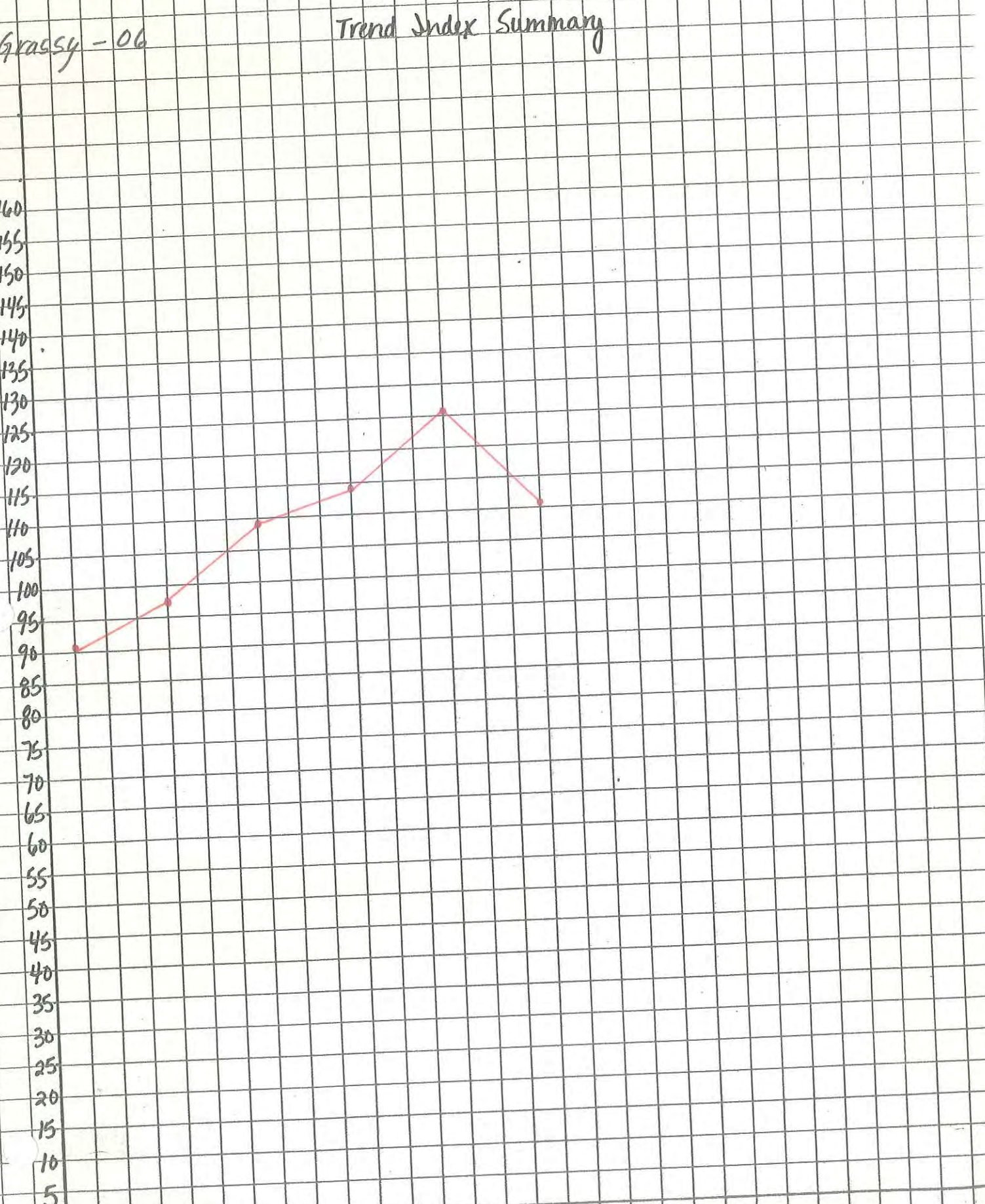
YEAR	69	70	81	83	85	89
TOTAL %	100	107	120	126	140	122

1st Grassy - 06

Trend Index Summary

160
155
150
145
140
135
130
125
120
115
110
105
100
95
90
85
80
75
70
65
60
55
50
45
40
35
30
25
20
15
10
5

YEAR 69 70 81 83 85 89



1989

READING # 7

PLOT # 6

TREND STUDIES WRITE-UP

EXAMINER and others present: K. Snyder

ALLOTMENT AND SITE NUMBER: West Grassy - 06

DATE: 7-24-89

TIME: 9:15

SLOPE: 0-2%

CAMERA LENS: 28m

COMMENTS:

UNITED STATES
DEPARTMENT OF THE INTERIOR
BUREAU OF LAND MANAGEMENT

District Salt Lake
Resource Area Pony Express
Date and Time 7-24-89 9:15
Examiner K. Snyder

RANGE TREND PLOT DATA

Allotment Name

West Grassy

NUMBER

ALLOTMENT

PLOT

06

PART I - PLOT DATA BY SQUARE FOOT SECTION

SPECIES			MATURE PLANTS	SEEDLINGS	1/16 UNITS	TOTAL SQ. INCHES	MATURE PLANTS	SEEDLINGS	1/16 UNITS	TOTAL SQ. INCHES	MATURE PLANTS	SEEDLINGS	1/16 UNITS	TOTAL SQ. INCHES	MATURE PLANTS	SEEDLINGS	1/16 UNITS	TOTAL SQ. INCHES	MATURE PLANTS	SEEDLINGS	1/16 UNITS	TOTAL SQ. INCHES
GRASS	FORB	BROWSE																				
	(a)		(b)	(c)	(d)	(e)	(b)	(c)	(d)	(e)	(b)	(c)	(d)	(e)	(b)	(c)	(d)	(e)	(b)	(c)	(d)	(e)
		CHVI					1		2		1		3									
		ARNO									1		1.5						1			5
		FULA													1		.5					
		LITTER			T				.5				1				T					1
ELSA			1		4																	
		ARNO																	1			8
		FULA													1		.5					
		LITTER			1				.5				1				.5					.5
ELSA			1		6		1		6		-		1									
		ATCO																				2
		ARNO											2		-		2		1			2
		LITTER			1.5				.5				2				2					1
ELSA			2		10		1		16		1		8				2					6
		ARNO									-		2		1		9		1			1
		ATCO																				1
POSE															2		.5					
		LITTER			2				T				2				.5					1
ELSA			-		2		1		10													
POSE											3		1									
		ARNO																				7
		LITTER			1				3				1.5				1					2



1985 & 1983

READINGS # 6&5

PLOT # 6

UNIT STATES
DEPARTMENT OF THE INTERIOR
BUREAU OF LAND MANAGEMENT

RANGE TREND PLOT DATA

District
SALT LAKE
Resource Area
PONY EXPRESS
Date and Time
7/8/85 11:00
Examiner
ROYCE

Allotment Name

WEST GRASSY

NUMBER

ALLOTMENT

PLOT

#10

PART I - PLOT DATA BY SQUARE FOOT SECTION

SPECIES			MATURE PLANTS	SEEDLINGS	1/16 UNITS	TOTAL SQ. INCHES	MATURE PLANTS	SEEDLINGS	1/16 UNITS	TOTAL SQ. INCHES	MATURE PLANTS	SEEDLINGS	1/16 UNITS	TOTAL SQ. INCHES	MATURE PLANTS	SEEDLINGS	1/16 UNITS	TOTAL SQ. INCHES	MATURE PLANTS	SEEDLINGS	1/16 UNITS	TOTAL SQ. INCHES	
GRASS	FORB	BROWSE																					
	(a)		(b)	(c)	(d)	(e)	(b)	(c)	(d)	(e)	(b)	(c)	(d)	(e)	(b)	(c)	(d)	(e)	(b)	(c)	(d)	(e)	
		ATCO CHVT ARTR CELA			.75		1		.5					.10 .75									2
		LITTER			5				.10				2				0					2	
		ARTR CELA									1			.75								35	
ELSA			1		2																		
		LITTER			.10				.10				1				5					60	
ELSA		ARTR ATCO	1		3		1		4.5				5				4					1 .75	
		LITTER			4.5				6				7				2					1	
ELSA		ATCO ARTR	1		6		1		6.5		1		6 3				7					4 2	
		LITTER			2				8				4				4					2	
ELSA		ARTR			1		1		5.5				1				.75		1			6	
POA		ATCO							9		1		1									.75	
		LITTER			15				3				4				.50					1	

UNITED STATES
DEPARTMENT OF THE INTERIOR
BUREAU OF LAND MANAGEMENT

District **SALT LAKE**
Resource Area **PONY EXPRESS**
Date and Time **6-17-83 10:45**
Examiner **ROYCE**

RANGE TREND PLOT DATA

Allotment Name
WEST GRASSY

NUMBER	
ALLOTMENT	PLOT
	6

PART I - PLOT DATA BY SQUARE FOOT SECTION

SPECIES			MATURE PLANTS (b)	SEEDLINGS (c)	1/16 UNITS (d)	TOTAL SQ. INCHES (e)	MATURE PLANTS (b)	SEEDLINGS (c)	1/16 UNITS (d)	TOTAL SQ. INCHES (e)	MATURE PLANTS (b)	SEEDLINGS (c)	1/16 UNITS (d)	TOTAL SQ. INCHES (e)	MATURE PLANTS (b)	SEEDLINGS (c)	1/16 UNITS (d)	TOTAL SQ. INCHES (e)	MATURE PLANTS (b)	SEEDLINGS (c)	1/16 UNITS (d)	TOTAL SQ. INCHES (e)	
GRASS	FORB	BROWSE																					
(a)	(a)		(b)	(c)	(d)	(e)	(b)	(c)	(d)	(e)	(b)	(c)	(d)	(e)	(b)	(c)	(d)	(e)	(b)	(c)	(d)	(e)	
ELSA			2		1.5		2		10.5				4.0										
BRTE			5		.1						5		.1		5		.1						
		ARTR											1.0				.5		1			6.0	
POSE											1		1.0										
					1.0				.1				2.0				2.0					1.0	
		ATCO																				1.3	
		ARTR									1		9.0		1		10.0					3.0	
BRTE			5		.1		20		1.0		20		1.0		20		1.0		20			1.0	
ELSA					6.3		1		11.0				4.5										
					1.0				2.0				1.0				2.0					2.0	
ELSA			1		7.0				2.0														
BRTE							20		1.0		20		1.0		20		1.0		20			1.0	
		ARTR															1.0						
		ATCO																				.3	
					1.0				1.0				1.0				2.0					1.0	
BRTE		ARTR					5		1.0		20		1.0		10		.5		20			.5	
ELSA		CELA			1.0										1		2.5					1.0	
					1.0																		
					.2				1.0				1.0				.1					1.0	
BRTE			5		.1						5		.1		5		.1		20			1.0	
		ARTR									1		.3		1								
		CHVI					1	1	.2														
					.1				.1				2.0				.1					1.0	

TAP

Column (g) - Composition - $\frac{\text{Cover (Column (f)) of specie}}{\text{Total cover (of plot in Column (f))}} \times 100 = \text{percent composition}$

Column (f) - Estimate - Multiply Column (d) by 0.7 (3' x 3' plot) or 0.25 (5' x 5' plot)

Column (e) - Measurement - $\frac{\text{Measured sq. inches (Column (e))}}{1296 (3' \times 3' \text{ plot}) \text{ or } 3600 (5' \times 5' \text{ plot})} \times 100 = \text{cover}$

PART II - SUMMARY OF PLOT DATA

Total - Total data for each specie and enter (Part - II)

Note: Use either estimate or measurement for each species. Do not use both.

Column (a) - Use four letter plant symbol

Columns (b) & (c) - Enter number

Column (d) - Estimate - 1/16 sq. feet units covered by specie

Column (e) - Measure - Total sq. inches covered by specie

Record data for each 1' x 1' section of the plot

PART I - PLOT DATA BY SQUARE FOOT SECTION

(Items not listed are self-explanatory)

SPECIFIC INSTRUCTIONS

Print one legible copy in field for each trend plot. File with Range Trend Plot Location Data (Form 4412-24) and photographs (see Bureau Manual 4115).

GENERAL INSTRUCTIONS

114.5 / 90.6 X 100 = 136.42

PART II - SUMMARY OF PLOT DATA		PART III - PLOT DIAGRAM					
LIST BY SPECIES	NUMBER	MATURE PLANTS	SEED-LINGS	SQ. FT. UNITS (estimate)	SQ. IN. (measure-ment)	PERCENT	
						COVER	COMPO-SITION
(a)	(b)	(c)	(d)	(e)	(f)	(g)	(h)
Grasses (Basal Cover)	4	4		47.8	12		
ELSA					1.4		
BRTF	270			14.1	3.5		
POSE	1			1.0	0.3		
TOTAL							
Forbs (Basal Cover)							
Arise	3			32.3	8.1		
ARTR					32.4		
ATCO				1.6	.4		
CELA	1			2.5	.6		
CNVI			1	.2	.1		
TOTAL							
Litter, Plot Total (percent)					2.5		6.7
Seedlings, Key Species (number)					0.4		0.4
Cover, Live Vegetation (percent)					32.4		82.8
Composition, Key Species (percent)							114.5
Browse (Foliage Cover)							100.0
TOTAL							114.5

PART IV - TREND INDEX SUMMARY

U.S. DEPARTMENT OF THE INTERIOR
BUREAU OF LAND MANAGEMENT
SOIL-VEGETATION INVENTORY METHOD
***** SVIM *****
TRANSECT DATA SHEET

RECORD TYPE (1) V 1
FORMAT CODE (2) D
BLM ADMIN UNIT (ST/DI/RA/PU). (3) **UTSLPERA**
ALLOTMENT (4) **WEST GRASSY**
PASTURE (5) **NORTH**
SITE WRITEUP AREA (SWA) . . . (6) _____
TRANSECT NUMBER (7) **546**
COMPARISON AREA (8) _____
DATE (YYMMDD) (9) **830617**
ACTION CODE (A,D) (10) _____

(11)
AERIAL PHOTO

(12)
RECORDER

Royce

(13) GROUND COVER DATA			(14) HITS	(15) PLANT LIST			(16) SOIL FACTOR ITEMS	(16) RATING
BASAL	DOT	COUNT		SYMBOL	SYMBOL	SYMBOL		
BARE GROUND	■	332	13	ORHY			SOIL MOVEMENT	
PERISTENT LITTER	⋮	92	4	SIHY			SURFACE LITTER	
NON-PERSISTENT LITTER	⋮		5				SURFACE ROCK	
GRAVEL (2mm - 3")	■		14				PEDESTALLING	
COBBLE (3" - 10")	⋮		5				FLOW PATTERNS	
STONE (> 10")	⋮		1				RILLS	
BEDROCK	⋮						GULLIES	
							(17) SOIL SURFACE FACTOR TOTAL	

(18) LEVEL OF TRANSECT HIT					(19) HITS	(18) LEVEL OF TRANSECT HIT					(19) HITS
BASAL	CANOPY 1	CANOPY 2	CANOPY 3	DOT COUNT		BASAL	CANOPY 1	CANOPY 2	CANOPY 3	DOT COUNT	
B RTE				■ ■	22						
E LSA				Π	7						
A RTR				■ ■	23						
C E L A				⋮	1						
A T C O				⋮	2						
P O S E				⋮	2						
C H V I				⋮	1						

58%





DATE 6-22-88
DIST SALT LAKE
WEST ALLOT GRASSY
PASTURE NORTH
PLOT NO. 6



DATE 6-22-88
DIST SALT LAKE
WEST ALLOT GRASSY
PASTURE NORTH
PLOT NO. 6

1981 & 1976

READINGS # 4&3

PLOT # 6

UNITED STATES
 DEPARTMENT OF THE INTERIOR
 BUREAU OF LAND MANAGEMENT

RANGE TREND PLOT DATA

District **SALT LAKE**
 Resource Area **Pony Express**
 Date and Time **9-2-81 2:15PM**
 Examiner **Kidd**

Allotment Name

West Grassy

NUMBER

ALLOTMENT

PLOT

North

6

PART I - PLOT DATA BY SQUARE FOOT SECTION

SPECIES			MATURE PLANTS	SEEDLINGS	1/16 UNITS	TOTAL SQ. INCHES	MATURE PLANTS	SEEDLINGS	1/16 UNITS	TOTAL SQ. INCHES	MATURE PLANTS	SEEDLINGS	1/16 UNITS	TOTAL SQ. INCHES	MATURE PLANTS	SEEDLINGS	1/16 UNITS	TOTAL SQ. INCHES	MATURE PLANTS	SEEDLINGS	1/16 UNITS	TOTAL SQ. INCHES
GRASS	FORB	BROWSE																				
	(a)		(b)	(c)	(d)	(e)	(b)	(c)	(d)	(e)	(b)	(c)	(d)	(e)	(b)	(c)	(d)	(e)	(b)	(c)	(d)	(e)
	LITTER		■	■		■	■	■		■	■	■		■	■	■		■	■	■		■
	LITTER		■	■		■	■	■		■	■	■		■	■	■		■	■	■		■
	LITTER		■	■		■	■	■		■	■	■		■	■	■		■	■	■		■
	LITTER		■	■		■	■	■		■	■	■		■	■	■		■	■	■		■

PART II - SUMMARY OF PLOT DATA						PART III - PLOT DIAGRAM				
LIST BY SPECIES (a)	NUMBER		1/16 SQ. FT. UNITS (estimate) (d)	TOTAL SQ. IN. (measurement) (e)	PERCENT					
	MATURE PLANTS (b)	SEED-LINGS (c)			COVER (f)	COMPOSITION (g)				
Grasses (Basal Cover)										
E/sq	3	1	20		5	52.1				
Pose	1	2	.5		.13	1.4				
Siky	1		.1		.03	.3				
TOTAL										
Forbs (Basal Cover)										
Hqsl		8								
TOTAL										
Browse (Foliage Cover)										
Eulq	2	2	1		.25	2.6				
Arno	2		16		.4	41.7				
tegl		1	7		.18	1.9				
TOTAL										
Litter										
TOTAL										
PLOT TOTAL										

PART IV - TREND INDEX SUMMARY	
Composition, Key Species (percent)	98.4
Cover, Live Vegetation (percent)	169.6
Seedlings, Key Species (number)	1
Litter, Plot Total (percent)	2
TOTAL	109

Key spp.
Eulq
Arno
E/sq
Pose

GENERAL INSTRUCTIONS

55K

8 109
7 906-120
6
6
8

Print one legible copy in field for each trend plot. File with Range Trend Plot Location Data (Form 4412-24) and photographs (see Bureau Manual 4115).

SPECIFIC INSTRUCTIONS
(Items not listed are self-explanatory)

PART I - PLOT DATA BY SQUARE FOOT SECTION

Record data for each 1' x 1' section of the plot

- Column (a) - Use four letter plant symbol
- Columns (b) & (c) - Enter number
- Column (d) - Estimate - 1/16 sq. feet units covered by specie
- Column (e) - Measure - Total sq. inches covered by specie
- Note: Use either estimate or measurement for each species. Do not use both.
- Total - Total data for each specie and enter (Part - II)

Moderate 49

PART II - SUMMARY OF PLOT DATA

- Column (e) - Measurement - $\frac{\text{Measured sq inches (Column (e))}}{1296 (3' \times 3' \text{ plot}) \text{ or } 3600 (5' \times 5' \text{ plot})} \times 100 = \text{cover}$
- Column (f) - Estimate - Multiply Column (d) by 0.7 (3' x 3' plot) or 0.25 (5' x 5' plot)
- Column (g) - Composition - $\frac{\text{Cover (Column (f)) of specie}}{\text{Total cover (of plot in Column (f))}} \times 100 = \text{percent composition}$



TRANSECT 6
June 9, 1976



TRANSECT 6
Sept. 2, 1981

1970 & 1969

READINGS # 2&1

PLOT # 6

UNITED STATES
DEPARTMENT OF THE INTERIOR
BUREAU OF LAND MANAGEMENT

District Salt Lake
Date 8/17/70
Examiner J. Perkins

RANGE TREND PLOT DATA

Allotment <u>Diamond - T</u>	Pasture <u>North</u>	Key Species <u>ANNO</u>	Elevation
Grazing System <u>deferred rotation</u>	PLOT		Slope <u>7%</u>
Treatment	Number <u>6</u>	Size <u>5x5</u>	Exposure <u>West</u>
	Vegetative Type <u>Large-grass</u>	<u>Elsa</u>	

LIST BY SPECIES (a)	NUMBER		1/16 SQ. FT. UNITS (estimate) (d)	TOTAL SQ. IN. (measure- ment) (e)	PERCENT		SIZE OF INDIVIDUAL PLANTS (A = TT ab) (h)
	MATURE PLANTS (b)	SEED- LINGS (c)			COVER (f)	COMPO- SITION (g)	
Grasses (Basal Cover)							
<u>Elsa</u>	<u>2</u>		<u>12</u>		<u>3.0</u>	<u>25</u>	<u>75</u>
TOTAL							
Forbs (Basal Cover)							
TOTAL							
Browse (Foliage Cover)							
<u>ANNO</u>	<u>2</u>		<u>25.5</u>		<u>6.38</u>	<u>53.2</u>	<u>2-9 14</u>
<u>Eula</u>	<u>1</u>		<u>1.5</u>		<u>.37</u>	<u>3.1</u>	<u>1-</u>
<u>Atca</u>	<u>2</u>		<u>6.5</u>		<u>1.62</u>	<u>13.5</u>	<u>2-4</u>
<u>Alsp</u>	<u>2</u>		<u>2.5</u>		<u>.63</u>	<u>5.25</u>	<u>-2</u>
TOTAL							
Litter			<u>15.5</u>		<u>3.88</u>		<u>-4-6-4</u>
PLOT TOTAL					<u>15.88</u>	<u>100</u>	

Comments

TREND INDEX SUMMARY

Composition, Key Species (percent)	<u>81.3</u>
Cover, Live Vegetation (percent)	<u>12.00</u>
Seedlings, Key Species (number)	<u>0</u>
Litter, Plot Total (percent)	<u>3.88</u>
TOTAL	<u>97.18</u>

97.18
90.8 = 101%

GENERAL INSTRUCTIONS

APPARENT TREND DATA

On-site Analysis (write concise narration of items listed below)

1. Soil stability, active erosion
 2. Relative plant composition:
 - a. desirable vs. undesirable
 - b. protected vs. unprotected
 3. Vigor—size, number of culms, growth, seedheads, etc
 4. Reproduction
 5. Evidence of grazing—past and present
 6. Apparent trend
- Revisitation Analysis*
 Compare with previous analysis. Note change in species, soil cover, litter, amount of erosion, etc. Use extra sheets, if necessary.

Analysis in the Name of #5.

SPECIFIC INSTRUCTIONS

- Column
- (d) Each 1/16 sq. ft. unit = 0.7 percent, 3 x 3 ft. plot; 0.25 percent, 5 x 5 ft. plot
- (h) Record length and breadth — Divide by 2 for major and minor radii

1. Circle understory plants
2. Do not use understory plants in computing cover
3. In Trend Index Summary, cover live vegetation may be either total plot cover or cover of key species only

UNITED STATES
DEPARTMENT OF THE INTERIOR
BUREAU OF LAND MANAGEMENT

District
SALT LAKE
Date
8/12/69
Examiner
CARPENTER PERKINS

RANGE TREND PLOT DATA

33 Slips North of Red Post

Allotment <u>Diamond-T</u>	Pasture <u>North</u>	Key Species <u>ALNO</u>	Elevation
Grazing System <u>DEFERRED ROTATION</u>	PLOT Number <u>6</u> Size <u>5x5</u>		Slope <u>7%</u>
Treatment	Vegetative Type <u>SAGEBRUSH-GRASS</u>	<u>EISA</u>	Exposure <u>WEST</u>

LIST BY SPECIES (a)	NUMBER		1/16 SQ. FT. UNITS (estimate) (d)	TOTAL SQ. IN. (measure- ment) (e)	PERCENT		SIZE OF INDIVIDUAL PLANTS (A = TT ab) (h)
	MATURE PLANTS (b)	SEED- LINGS (c)			COVER (f)	COMPO- SITION (g)	
Grasses (Basal Cover)							
<u>EISA Salineville</u>	<u>4</u>		<u>7.5</u>		<u>1.875</u>	<u>15.8</u>	<u>2-3-1/2-1</u>
TOTAL			<u>7.5</u>				
Forbs (Basal Cover)							
TOTAL							
Browse (Foliage Cover)							
<u>ALNO Black Sage</u>	<u>2</u>		<u>28.2</u>		<u>7.125</u>	<u>60</u>	<u>36-15 1/2-4 1/2-5</u>
<u>Eula (Winterfat)</u>	<u>1</u>		<u>1.5</u>		<u>.375</u>	<u>3.2</u>	<u>11</u>
<u>ATCO (Shadscale)</u>	<u>3</u>		<u>7</u>		<u>1.75</u>	<u>14.7</u>	
<u>HYSP Bud Sage</u>	<u>1</u>		<u>3</u>		<u>.75</u>	<u>6.3</u>	
TOTAL			<u>40</u>		<u>11.875</u>	<u>100.0</u>	
Litter							
PLOT TOTAL					<u>11.875</u>		<u>Key spp</u>

Comments

TREND INDEX SUMMARY

Composition, Key Species (percent)	<u>79.8</u>
Cover, Live Vegetation (percent)	<u>11.8</u>
Seedlings, Key Species (number)	
Litter, Plot Total (percent)	
TOTAL	<u>90.8</u>

90.8
90.8 = 100



TRANSECT 6
Sept 17 1969

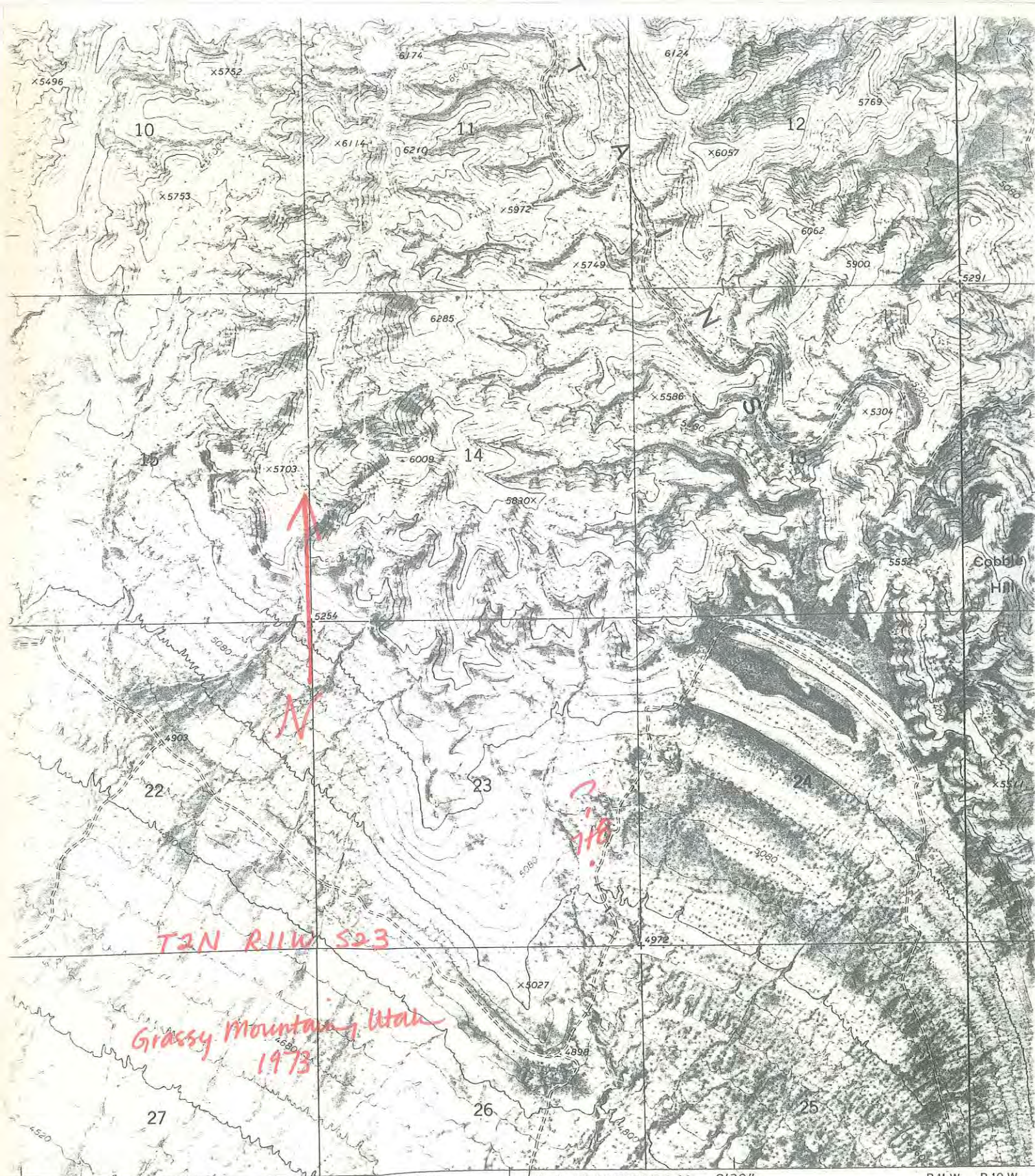


LAKESIDE
SALT LAKE NO 2
DATE
PASTURE
ALLOT
PLOT



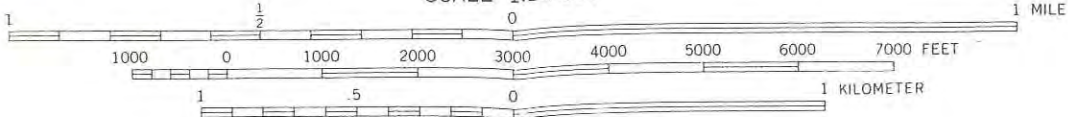
LAKESIDE
SALT LAKE NO 2
DATE 9-11-69
PASTURE
ALLOT
PLOT 6

TRANSECT 6
August 17, 1970



5' 325 (RIPPLE VALLEY) 3365 1 SE 10 MI TO INTERSTATE 80 2'30" R11W R10W

SCALE 1:24 000



CONTOUR INTERVAL 40 FEET
NATIONAL GEODETIC VERTICAL DATUM OF 1929



P
h
S
h

WEST GRASSY

Range Study #1

The plot is 46 paces southeast of $N\frac{1}{2}$ corner of Section 1, T. 1 N., R. 11 W.
A green, steel post marks the $\frac{1}{4}$ corner peg.

Range Study #2

The plot is 74 paces north of $N\frac{1}{2}$ corner of Section 1, T. 1 N., R. 11 W.
A green, steel post marks $\frac{1}{4}$ corner.

Range Study #3

The study is located 2 miles due east of $N\frac{1}{2}$ corner of Section 6,
T. 1 N., R. 11 W. Plot #3 is 20 paces north of red, steel post.

Range Study #4

Same procedure as #3. Plot #4 is 20 paces south of red, steel post.

Range Study #5

The plot is 23 steps east of the NW section corner of Section 6, T. 1 N.,
R. 10 W. The section corner is marked by a red, steel post.

Range Study #6

The plot is 33 steps north of the SW section corner of Section 31, T. 2 N.,
R. 10 W. The section corner is marked by a red, steel post.

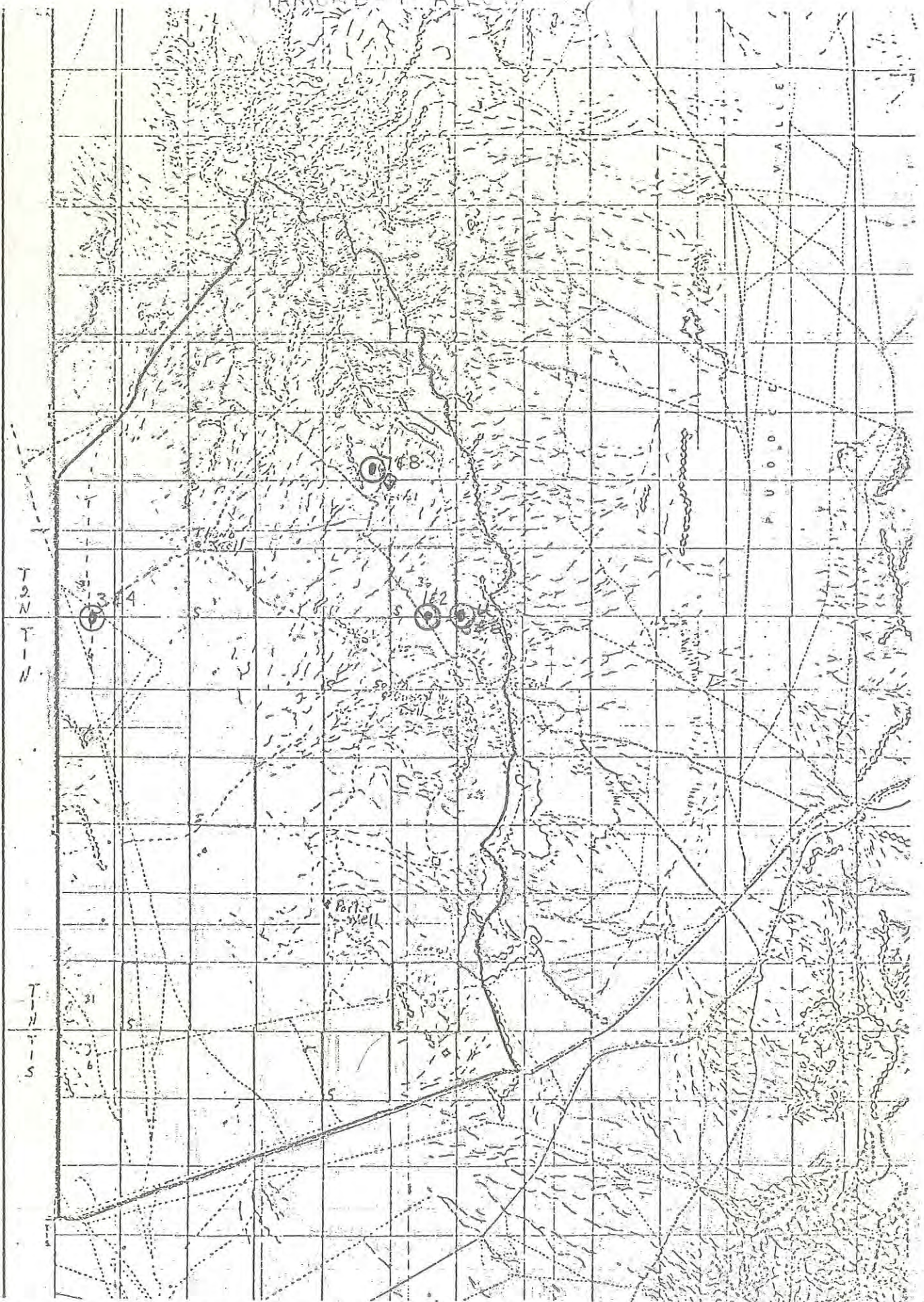
Range Study #7

From study plots 1 and 2, follow the road northeast for ^{3 1/2} miles to an
old corral. Then, north $1\frac{1}{2}$ mile to a red, steel post on the side of the
road. The plot is 51 steps easterly from the red post.

Range Study #8

Same procedure as #7. Plot is 51 steps westerly from the red post.

DIAMOND-T. ALLOT.



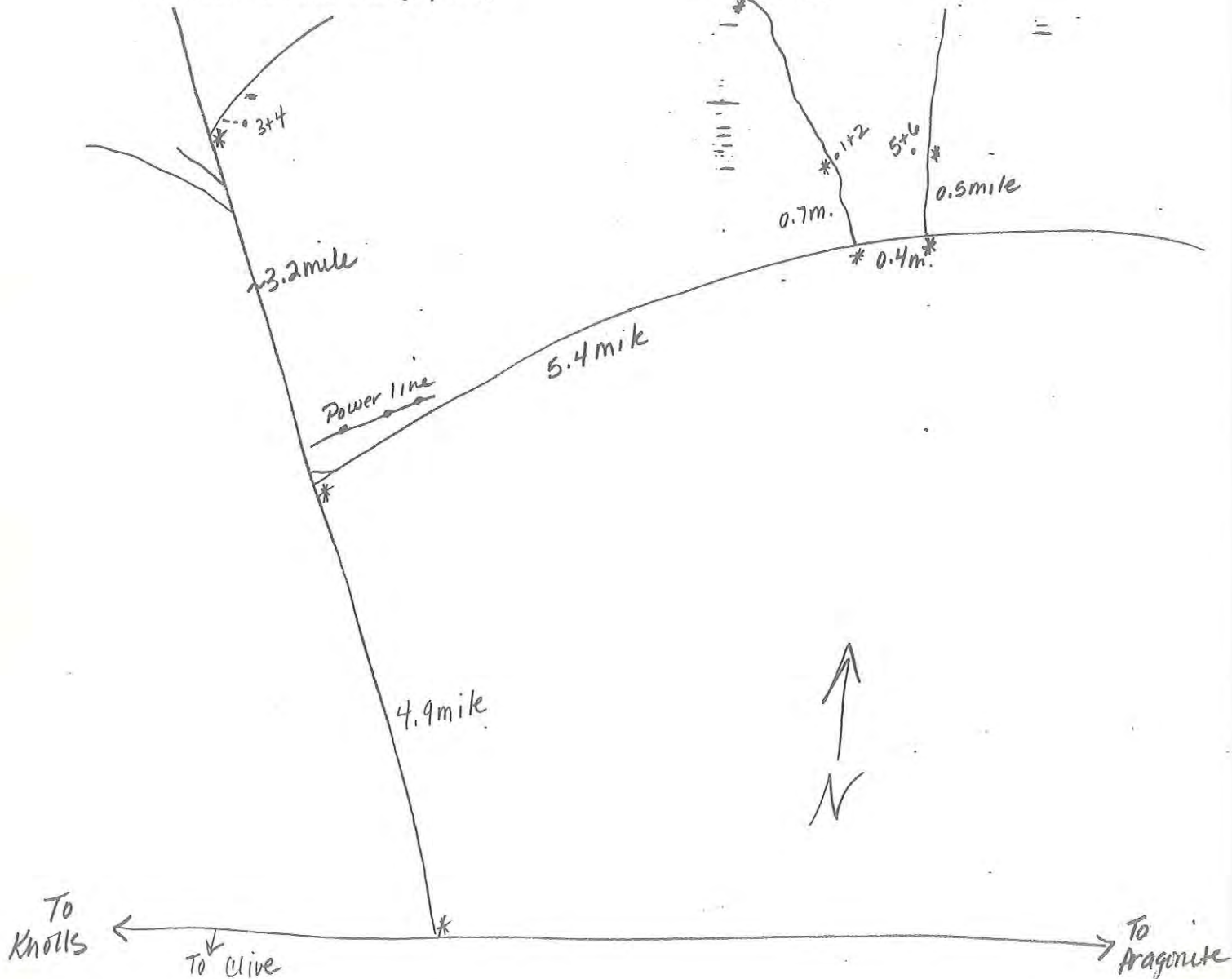
u. Utilization Chart O = RANGE STUDY PLOTS

Key Area Location

District Salt Lake Date 7-24-89
Allotment West Grassy Aerial Photo # _____
Prepared by K. Snyder or 7½' Quad Ripple Valley - Gray Back Hills
or Orthophoto Grassy Mtns.
Photo or Map Date 1973-1973-1973

Location Sketch (Scale 1:1000)

show appropriate permanent landmarks (with names and distances) in relation to the study plot.



ALLOTMENT	WEST GRASSY		LOCATION		TREND INDEX SUMMARY	
	DATE	WG-7	T2N R11W SEC. 23			
ALLOTMENT	WEST GRASSY		LOCATION		TREND INDEX SUMMARY	
DATE	8/12/1969		T2N R11W SEC. 23		Composition, Key Species	89.1
PLOT	WG-7				Cover, Live Vegetation	8.1
List by Species	Mature	NUMBER	1/16 SQ. FT. UNITS	PERCENT		Seedlings, Key Species
				Cover	Composition	
Grasses (basal cover)	11		11	2.75	33.8	10
ELSA	10		3.5	0.875	10.8	0
POSE						
TOTAL	21	0	14.5	3.625	44.6	107.2
Forbs (basal cover)						
TOTAL	0	0	0	0	0	
Browse (foliage cover)						
ARNO	2	2	11	2.75	33.8	
EULA	5	8	2	1.75	21.5	
TOTAL	7	10	13	4.5	55.3	
LITTER						
PLOT TOTAL	28	10	27.5	8.125	99.9	

ALLOTMENT	WEST GRASSY		LOCATION	
	DATE		T2N R11W SEC. 23	
PLOT	WG-7		1/16 SQ. FT	PERCENT
List by Species	NUMBER		UNITS	Composition
	Mature	Seedlings		
Grasses (basal cover)	11		8	23.2
ELSA	17		4	11.6
POSE				
TOTAL	28	0	12	34.8
Forbs (basal cover)				
TOTAL	0	0	0	0
Browse (foliage cover)				
ARNO	3	1	13	37.7
EULA	11		9.5	27.6
TOTAL	14	1	22.5	65.3
LITTER			10.5	2.62
PLOT TOTAL	42	1	34.5	100.1

TREND INDEX SUMMARY	
Composition, Key Species	88.5
Cover, Live Vegetation	8.65
Seedlings, Key Species	1
Litter, Plot Total	2.62
TOTAL	100.77

ALLOTMENT	DATE	WEST GRASSY	LOCATION		PERCENT	TREND INDEX SUMMARY
			9/2/1981	T2N R11W SEC. 23		
PLLOT		WG-7	1/16 SQ. FT	UNITS	Cover	Composition
List by Species		NUMBER				
Grasses (basal cover)		Mature	Seedlings			
ELSA		11	2	20	5	50
POSE		6	1	3	0.75	7.5
TOTAL		17	3	23	5.75	57.5
Forbs (basal cover)						
TOTAL		0	0	0	0	0
Browse (foliage cover)						
EULA		3		3	0.75	7.5
ARNO		1	1	15	3.5	35
TOTAL		4	1	18	4.25	42.5
LITTER					1	
PLLOT TOTAL		21	4	41	11	100

ALLOTMENT	WEST GRASSY		LOCATION		TREND INDEX SUMMARY
	DATE	PLOT	1/16 SQ. FT	PERCENT	
	7/8/1985	WG-7	UNITS	Composition	Composition, Key Species
				Cover	Cover, Live Vegetation
List by Species	Mature	Seedlings			Seedlings, Key Species
Grasses (basal cover)					Litter, Plot Total
ELSA	15		37.25	9.31	88.3
POSE	15		7.45	1.86	15.88
					0
					4.06
					108.24
TOTAL	30	0	44.7	11.17	70.3
Forbs (basal cover)					
TOTAL	0	0	0	0	0
Browse (foliage cover)					
CELA	4		2.6	0.65	4.1
ARNO	4		16.25	4.06	26
TOTAL	8	0	18.85	4.71	30.1
LITTER					
PLOT TOTAL	38	0	63.55	19.94	100.4

1989

READING # 5

PLOT # 7

Location Post LOST

TREND STUDIES WRITE-UP

EXAMINER and others present: K. Snyder

ALLOTMENT AND SITE NUMBER: West Grassy -07

DATE: 7-24-89

TIME: —

SLOPE: —

CAMERA LENS: —

COMMENTS: Location post was no longer there. Plots were not located. Need 4x4 for road.

1985 & 1981

READINGS # 4&3

PLOT # 7

UNITED STATES
DEPARTMENT OF THE INTERIOR
BUREAU OF LAND MANAGEMENT

RANGE TREND PLOT DATA

7/8/1985

District

Resource Area

PONY EXPRESS

Date and Time 7/8/85 1:00

Examiner ROYCE

Allotment Name

WEST GRASSY # 7

NUMBER

ALLOTMENT

PLOT

7

PART I - PLOT DATA BY SQUARE FOOT SECTION

SPECIES			MATURE PLANTS	SEEDLINGS	1/16 UNITS	TOTAL SQ. INCHES	MATURE PLANTS	SEEDLINGS	1/16 UNITS	TOTAL SQ. INCHES	MATURE PLANTS	SEEDLINGS	1/16 UNITS	TOTAL SQ. INCHES	MATURE PLANTS	SEEDLINGS	1/16 UNITS	TOTAL SQ. INCHES	MATURE PLANTS	SEEDLINGS	1/16 UNITS	TOTAL SQ. INCHES	
GRASS	FORB	BROWSE																					
(a)	(a)	(a)	(b)	(c)	(d)	(e)	(b)	(c)	(d)	(e)	(b)	(c)	(d)	(e)	(b)	(c)	(d)	(e)	(b)	(c)	(d)	(e)	
POSE			1		.75						2		.5										
ELSA								.25			1		.25		1		7.5						
		CELA					1	.75															
		ARND													1		.5						
LITTER					1				1				3				1					1	
		ARND															2					2	
POSE			1		.1						2		.5		1		.5						
ELSA		CELA						.1			1		1		1		.5						
								.5			1		2										
LITTER					.1			.1					1				.1					.1	
ELSA			1		3		2												2			1.5	
POSE		CELA					1	.25		1			.25										
		ARND															5		1			3	
LITTER					.25			.1					.1				.1					2	
ELSA			1		.5				2.5		1		2				.25		2		10		
POSE		ARND															2				.5		
LITTER								.1		1.0			.5				.25					1	
POSE			1		1.5		1	.75			2		.75		1		.10						
ELSA							1	1.5					.5		2		1.5					.25	
		ARND																				1.5	
LITTER					0				.25				.1				1.5					.75	

Column (g) - Composition - $\frac{\text{Cover (Column (f)) of specie}}{\text{Total cover (of plot in Column (f))}} \times 100 = \text{percent composition}$

Column (e) - Measurement - $\frac{\text{Measured sq. inches (Column (e))}}{1296 (3' \times 3' \text{ plot}) \text{ or } 3600 (5' \times 5' \text{ plot})} \times 100 = \text{cover}$

Column (f) - Estimate - Multiply Column (d) by 0.7 (3' x 3' plot) or 0.25 (5' x 5' plot)

PART II - SUMMARY OF PLOT DATA

Column (a) - Use four letter plant symbol
 Columns (b) & (c) - Enter number
 Column (d) - Estimate - 1/16 sq. feet units covered by specie
 Column (e) - Measure - Total sq. inches covered by specie
 Note: Use either estimate or measurement for each species. Do not use both.
 Total - Total data for each specie and enter (Part - II)

Record data for each 1' x 1' section of the plot

PART I - PLOT DATA BY SQUARE FOOT SECTION

(Items not listed are self-explanatory)
 SPECIFIC INSTRUCTIONS

Print one legible copy in field for each trend plot. File with Range Trend Plot Location Data (Form 4412-24) and photographs (see Bureau Manual 4115).

GENERAL INSTRUCTIONS

KEY species FLSA, CELA, ARNO (M.P.)
 $\frac{108.24}{107.2} \times 100 = 101.2$

LIST BY SPECIES	MATURE PLANTS	SEED-LINGS	1/16 SQ. FT. UNITS (estimate)	TOTAL SQ. IN. (measurement)	PERCENT	
					COVER	COMPO-SITION
(a)	(b)	(c)	(d)	(e)	(f)	(g)
Grasses (Basal Cover)	1/5		37.25	9.31	1.86	11.1
Forbs (Basal Cover)			7.45			
TOTAL						
Browse (Foliage Cover)	4		2.10	4.65	4.1	
CELA						
ARNO	4		16.25	4.06	26.0	
Seedlings, Key Species (number)						
Cover, Live Vegetation (percent)					15.88	
Composition, Key Species (percent)						53.30
TOTAL						
Litter, Plot Total (percent)					4.06	
Plot TOTAL						108.24
TOTAL						108.24

PART IV - TREND INDEX SUMMARY

PART III - PLOT DIAGRAM

UNITED STATES
 DEPARTMENT OF THE INTERIOR
 BUREAU OF LAND MANAGEMENT

RANGE TREND PLOT DATA

District
SALT LAKE
 Resource Area
Pony Express
 Date and Time *9-2-81 3:00pm*
 Examiner
Kidd

Allotment Name

West Grassy

NUMBER

ALLOTMENT

PLOT

North

7

PART I - PLOT DATA BY SQUARE FOOT SECTION

GRASS	SPECIES		MATURE PLANTS	SEEDLINGS	1/16 UNITS	TOTAL SQ. INCHES	MATURE PLANTS	SEEDLINGS	1/16 UNITS	TOTAL SQ. INCHES	MATURE PLANTS	SEEDLINGS	1/16 UNITS	TOTAL SQ. INCHES	MATURE PLANTS	SEEDLINGS	1/16 UNITS	TOTAL SQ. INCHES	MATURE PLANTS	SEEDLINGS	1/16 UNITS	TOTAL SQ. INCHES
	FORB	BROWSE																				
	(a)		(b)	(c)	(d)	(e)	(b)	(c)	(d)	(e)	(b)	(c)	(d)	(e)	(b)	(c)	(d)	(e)	(b)	(c)	(d)	(e)
	LITTER																					
	LITTER																					
	LITTER																					
	LITTER																					
	LITTER																					

Column (g) - Composition - $\frac{\text{Cover (Column (f)) of specie}}{\text{Total cover (of plot in Column (f))}} \times 100 = \text{percent composition}$

Column (e) - Measurement - $\frac{\text{Measured sq inches (Column (e))}}{1296 (3' \times 3' \text{ plot}) \text{ or } 3600 (5' \times 5' \text{ plot})} \times 100 = \text{cover}$

Column (f) - Estimate - Multiply Column (d) by 0.7 (3' x 3' plot) or 0.25 (5' x 5' plot)

PART II - SUMMARY OF PLOT DATA

Total - Total data for each specie and enter (Part - II)

Note: Use either estimate or measurement for each species. Do not use both.

Column (e) - Measure - Total sq. inches covered by specie

Column (d) - Estimate - 1/16 sq. feet units covered by specie

Columns (b) & (c) - Enter number

Column (a) - Use four letter plant symbol

Record data for each 1' x 1' section of the plot

PART I - PLOT DATA BY SQUARE FOOT SECTION

(Items not listed are self-explanatory)

SPECIFIC INSTRUCTIONS

Set in plot was located as *precisely as possible*

GENERAL INSTRUCTIONS

2 new posts were set in plot was found up set

note: plot was found up set

Print one legible copy in field for each trend plot. File with Range Trend Plot Location Data (Form 4412-24) and photographs (see Bureau Manual 4115).

Key so
E159
E119
E118

LIST BY SPECIES	MATURE PLANTS	SEED-LINGS	SQ. FT. UNITS (estimate)	TOTAL SQ. IN. (measurement)	COVER	COMPO-SITION	PART II - SUMMARY OF PLOT DATA	
							NUMBER	PERCENT
(a)	(b)	(c)	(d)	(e)	(f)	(g)		
Grasses (Basal Cover)								
E159	11	2	20	5	175	50		
Pose	6	1	3	175	75			
TOTAL								
Forbs (Basal Cover)								
Browse (Foliage Cover)								
E119	3	1	3	175	75			
Ar no	1	1	14	3.5	35			
Seedlings, Key Species (number)								
3 115								
Litter, Plot Total (percent)								
1								
TOTAL								
Plot TOTAL								100
TOTAL								106.5

PART IV - TREND INDEX SUMMARY

PART III - PLOT DIAGRAM

106.5
107.2 = 99.8





ALLOT
PASTURE North
PLOT NO. 7



DATE 9-2-81
DIST Salt Lake
ALLOT West
PASTURE North
PLOT NO. 7

1970 & 1969

READINGS # 2&1

PLOT # 7

UNITED STATES
DEPARTMENT OF THE INTERIOR
BUREAU OF LAND MANAGEMENT

District Salt Lake
Date 8/18/70
Examiner J Perkins

RANGE TREND PLOT DATA

Allotment <u>Diamond - T</u>	Pasture <u>North</u>	Key Species <u>Elsa</u>	Elevation
Grazing System <u>deferred rotation</u>	PLOT		Slope <u>4%</u>
Treatment <u></u>	Number <u>7</u>	Size <u>5x5</u>	Key Species <u>Alno</u>
	Vegetative Type <u>desert shrub</u>		Exposure <u>SE</u>
		Key Species <u>Eula</u>	

LIST BY SPECIES (a)	NUMBER		1/16 SQ. FT. UNITS (estimate) (d)	TOTAL SQ. IN. (measure- ment) (e)	PERCENT		SIZE OF INDIVIDUAL PLANTS (A = TT ab) (h)
	MATURE PLANTS (b)	SEED- LINGS (c)			COVER (f)	COMPO- SITION (g)	
Grasses (Basal Cover)							
<u>Elsa</u>	<u>11</u>		<u>8</u>		<u>2.0</u>	<u>23.2</u>	<u>2-1-31</u>
<u>Pose</u>	<u>17</u>		<u>4</u>		<u>1.0</u>	<u>11.6</u>	<u>---11-</u>
TOTAL							
Forbs (Basal Cover)							
TOTAL							
Browse (Foliage Cover)							
<u>Alno</u>	<u>3</u>	<u>1</u>	<u>13</u>		<u>3.25</u>	<u>37.7</u>	<u>11-72-1</u>
<u>Eula</u>	<u>11</u>		<u>9.5</u>		<u>2.38</u>	<u>27.6</u>	<u>2-6--</u>
TOTAL							
Litter			<u>10.5</u>		<u>2.62</u>		<u>2-13-3</u>
PLOT TOTAL					<u>11.25</u>	<u>100</u>	

Comments

TREND INDEX SUMMARY

Composition, Key Species (percent)	<u>84.5</u>
Cover, Live Vegetation (percent)	<u>8.63</u>
Seedlings, Key Species (number)	<u>1.00</u>
Litter, Plot Total (percent)	<u>2.62</u>
TOTAL	<u>100.75</u>

100.75
 $107.2 = 94\%$

SPECIFIC INSTRUCTIONS

Column

(d) Each 1/16 sq. ft. unit = 0.7 percent, 3 x 3 ft. plot; 0.25 percent, 5 x 5 ft. plot

(h) Record length and breadth - Divide by 2 for major and minor radii

1. Circle understory plants
2. Do not use understory plants in computing cover
3. In Trend Index Summary, cover live vegetation may be either total plot cover or cover of key species only

GENERAL INSTRUCTIONS

APPARENT TREND DATA

On-site Analysis (write concise narration of items listed below)

1. Soil stability, active erosion
 2. Relative plant composition:
 - a. desirable vs. undesirable
 - b. protected vs. unprotected
 3. Vigor - size, number of culms, growth, seedheads, etc
 4. Reproduction
 5. Evidence of grazing - past and present
 6. Apparent trend
- Revisitation Analysis
 Compare with previous analysis. Note change in species, soil cover, litter, amount of erosion, etc. Use extra sheets, if necessary.

1. Heavy erosion - bad place for a plot.
2. Hagl + Bite in scattered throughout area. Most plants are unprotected.
3. Vigor fair - good.
4. Little reproduction
5. Evidence of heavy grazing
6. Kerner area in state