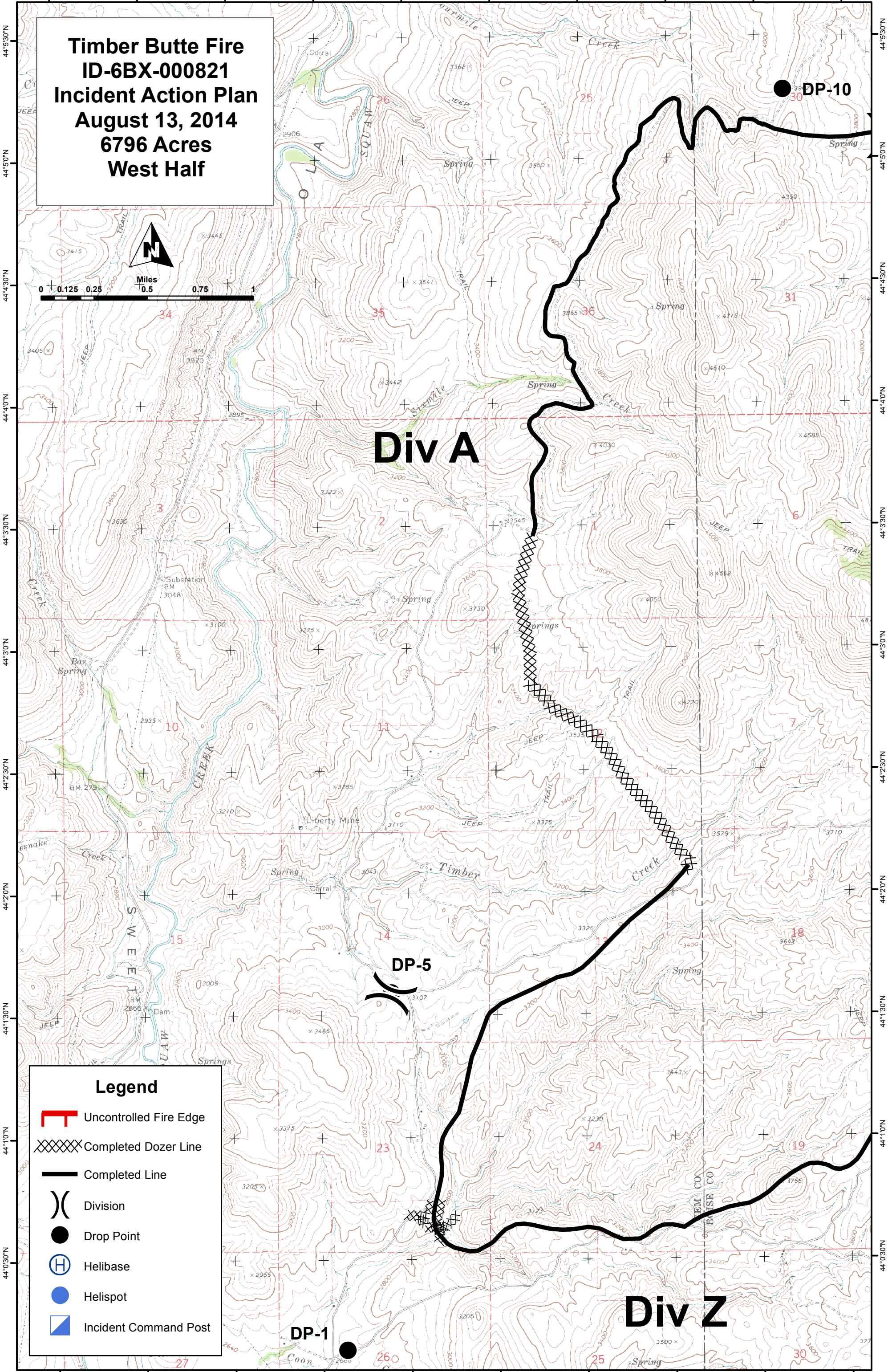


116°20'0"W 116°19'30"W 116°19'0"W 116°18'30"W 116°18'0"W 116°17'30"W 116°17'0"W 116°16'30"W 116°16'0"W 116°15'30"W



**Timber Butte Fire**  
**ID-6BX-000821**  
**Incident Action Plan**  
**August 13, 2014**  
**6796 Acres**  
**West Half**



0 0.125 0.25 0.5 0.75 1  
Miles

**Div A**









**DP-5**

**DP-10**

**Div Z**

**DP-1**

**Legend**

-  Uncontrolled Fire Edge
-  Completed Dozer Line
-  Completed Line
-  Division
-  Drop Point
-  Helibase
-  Helispot
-  Incident Command Post