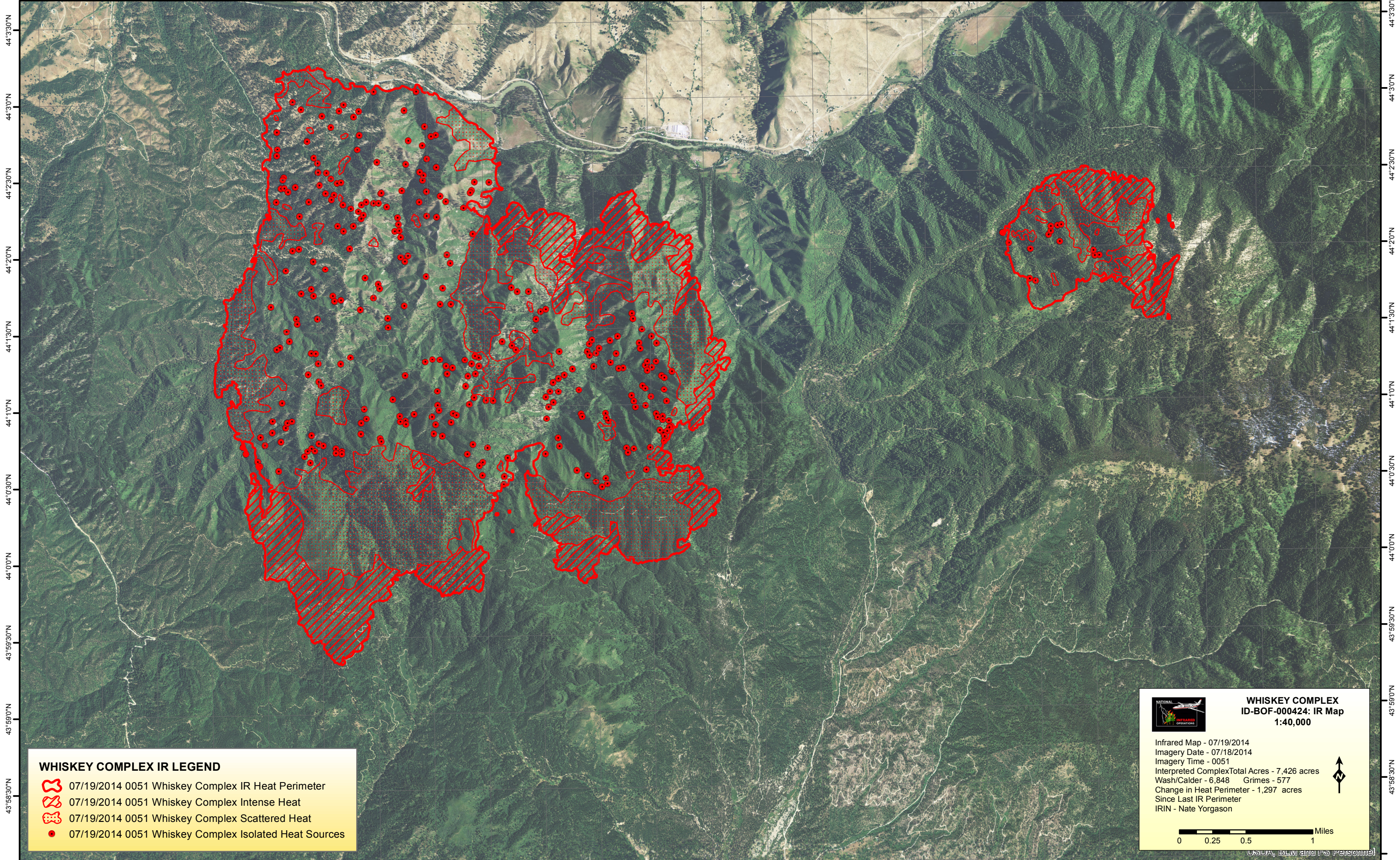


115°57'30"W 115°57'0"W 115°56'30"W 115°56'0"W 115°55'30"W 115°55'0"W 115°54'30"W 115°54'0"W 115°53'30"W 115°53'0"W 115°52'30"W 115°52'0"W 115°51'30"W 115°51'0"W 115°50'30"W 115°50'0"W 115°49'30"W 115°49'0"W 115°48'30"W 115°48'0"W 115°47'30"W 115°47'0"W 115°46'30"W 115°46'0"W 115°45'30"W




44°3'30"N
44°3'0"N
44°2'30"N
44°2'0"N
44°1'30"N
44°1'0"N
44°0'30"N
44°0'0"N
43°59'30"N
43°59'0"N
43°58'30"N


44°3'30"N
44°3'0"N
44°2'30"N
44°2'0"N
44°1'30"N
44°1'0"N
44°0'30"N
44°0'0"N
43°59'30"N
43°59'0"N
43°58'30"N

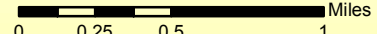
WHISKEY COMPLEX IR LEGEND

-  07/19/2014 0051 Whiskey Complex IR Heat Perimeter
-  07/19/2014 0051 Whiskey Complex Intense Heat
-  07/19/2014 0051 Whiskey Complex Scattered Heat
-  07/19/2014 0051 Whiskey Complex Isolated Heat Sources

 **WHISKEY COMPLEX**
ID-BOF-000424: IR Map
1:40,000

Infrared Map - 07/19/2014
Imagery Date - 07/18/2014
Imagery Time - 0051
Interpreted Complex Total Acres - 7,426 acres
Wash/Calder - 6,848 Grimes - 577
Change in Heat Perimeter - 1,297 acres
Since Last IR Perimeter
IRIN - Nate Yorgason



 Miles
0 0.25 0.5 1

USDA, BLM and FS Personnel

115°57'30"W 115°57'0"W 115°56'30"W 115°56'0"W 115°55'30"W 115°55'0"W 115°54'30"W 115°54'0"W 115°53'30"W 115°53'0"W 115°52'30"W 115°52'0"W 115°51'30"W 115°51'0"W 115°50'30"W 115°50'0"W 115°49'30"W 115°49'0"W 115°48'30"W 115°48'0"W 115°47'30"W 115°47'0"W 115°46'30"W 115°46'0"W 115°45'30"W