

R 8W

R 7W

R 6W

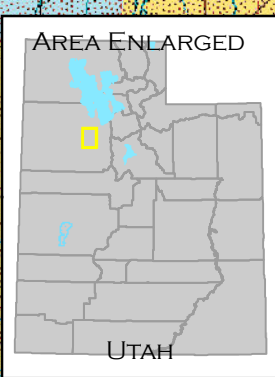
T 2S
T 3S

T 4S

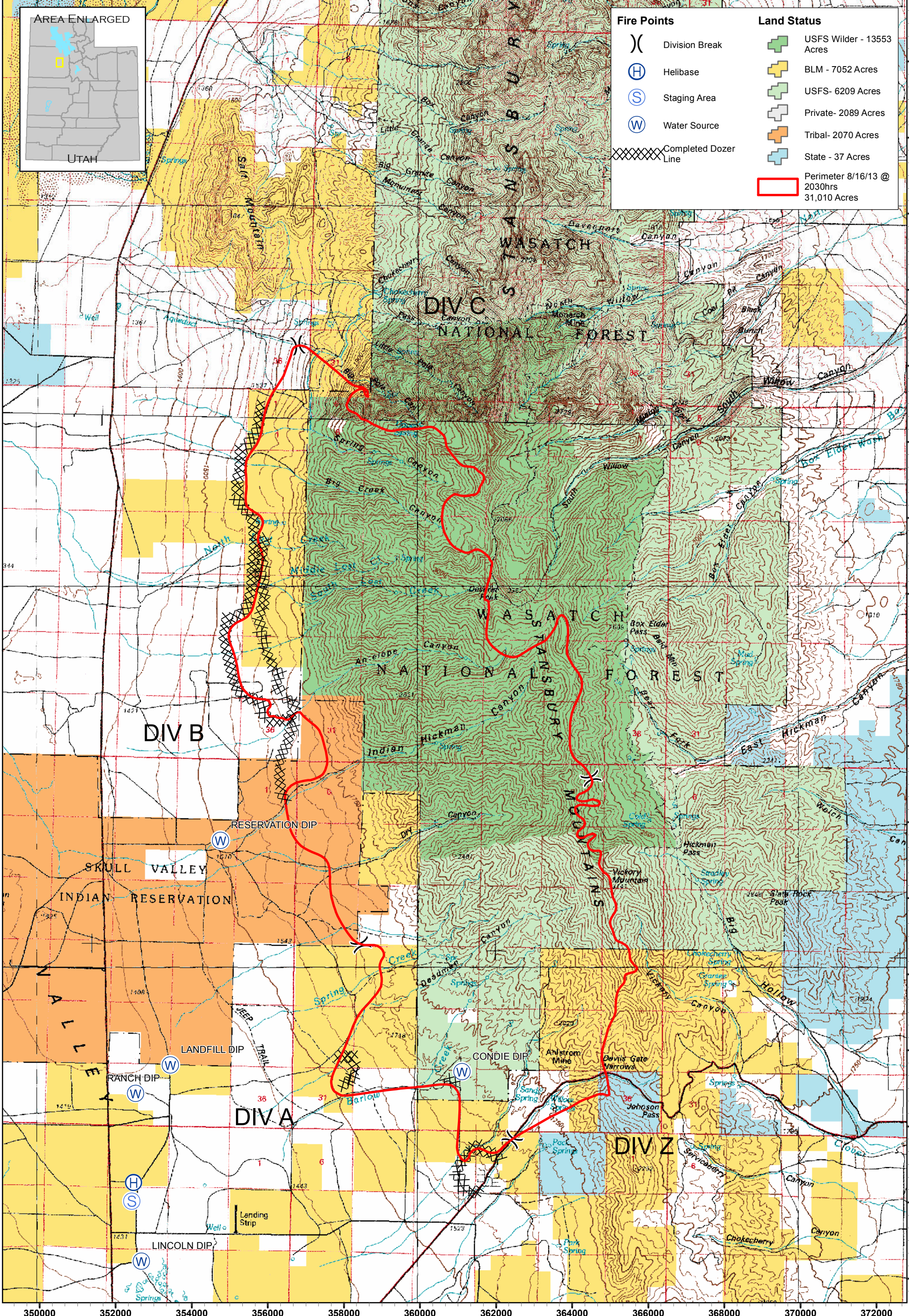
T 5S

T 6S

4494000
4492000
4490000
4488000
4486000
4484000
4482000
4480000
4478000
4476000
4474000
4472000
4470000
4468000
4466000
4464000
4462000



Fire Points		Land Status	
()	Division Break		USFS Wilder - 13553 Acres
(H)	Helibase		BLM - 7052 Acres
(S)	Staging Area		USFS - 6209 Acres
(W)	Water Source		Private - 2089 Acres
	Completed Dozer Line		Tribal - 2070 Acres
			State - 37 Acres
			Perimeter 8/16/13 @ 2030hrs 31,010 Acres



U.S. DEPARTMENT OF THE INTERIOR
BUREAU OF LAND MANAGEMENT
SALT LAKE FIELD OFFICE

This product may not meet BLM standards for accuracy and content. Different data sources and input scales may cause misalignment of data layers. Transportation network has not been verified.



PATCH SPRINGS- PD HU2S

0 0.75 1.5 3 Miles

1:90,000
(when plotted at 11" x 17")

