

Day Shift BISON



Incident
Action
Plan



July 11
2013

NV-WNA-030259

S FORMAT
DATUM NAD83
DD MM.SS
NCIAL CODE
PAHNV1 - FS
HNV1 - BLM



Incident Objectives	1. Incident Name BISON	2. Date Prepared 07/10/13	3. Time Prepared 0631
4. Operational Period 07/11/13 Thursday Day Shift 0600 - 2100			
5. General Control Objectives for the incident (include alternatives) <p>Firefighter and Public Safety is first priority. Mitigate for heat injury and exposure.</p> <p>Keep fire south of Stockyard Road, west of Upper Colony and Atesia Road, and east of Highway 395, north of Topaz Ranch Estates and Highway 208.</p> <p>Minimize fire impacts to structures in the Pine Nut Creek area (north and west of the fire).</p> <p>Minimize fire impacts to Bi-State Sage Grouse priority habitat.</p>			
6. Weather Forecast for Period See Spot Weather.			
7. General Safety Message Maintain LCES - <u>L</u> ookouts, <u>C</u> ommunications, <u>E</u> scape <u>R</u> outes and <u>S</u> afety <u>Z</u> ones. Continuously identify and minimize risks associated with your operations.			
8. Attachments (mark if attached)			
<input checked="" type="checkbox"/> Organization List - ICS 203 <input checked="" type="checkbox"/> Div. Assignment Lists - ICS 204 <input checked="" type="checkbox"/> Communications Plan - ICS205 <input checked="" type="checkbox"/> Medical Plan - ICS 206 <input checked="" type="checkbox"/> Air Operations Summary - ICS 220	<input checked="" type="checkbox"/> Incident Map <input checked="" type="checkbox"/> Safety Message <input type="checkbox"/> Traffic Plan <input checked="" type="checkbox"/> ICS 220 <input checked="" type="checkbox"/> Fire Behavior	<input checked="" type="checkbox"/> Fire Weather <input checked="" type="checkbox"/> ICS 215a <input checked="" type="checkbox"/> Safety Message <input checked="" type="checkbox"/> Training Message <input checked="" type="checkbox"/> Maps	
9. Prepared by (Planning Section Chief) Bob Reese	10. Approved by (Incident Commander) Mike Whalen		

ORGANIZATION ASSIGNMENT LIST		9. Operations Section	
1. Incident Name BISON		Day	RANDYANDERSON; MIKE FRIEND (t)
2. Date Prepared 07/10/13		Night	DAVE PROVENCIO
3. Time Prepared 0631		a. Branch I - DivisionS	
4. Operational Period 07/11/13 Thursday Day Shift 0600 - 2100		Branch Director	
Position	Name	Division/Group A	NAMAN; THALER (t)
5. Incident Commander and Staff		Division/Group D	ELLSWORTH; RICKERT (t)
Incident Commander	MIKE WHALEN; MARK ROSENTHAL (t)	Division/Group E	LUCUS; ROBINSON (t)
Deputy		Division/Group F	BANISTER
Safety Officer	JOE NISHIKIDA; JUSTIN BROLLIER	Division/Group G	PLATZ; ; NOLAN (t)
Information Officer	DOROTHY HARVEY	Division/Group M	JONES; PALMA (t)
Liaison Officer	BRIAN NIELSON (t)	b. STRUCTURE GROUP	
6. Agency Representative		Branch Director	
Agency	Name	Deputy	
BIA	GERRY EMM		
BLM	LEON THOMAS		
East Fork FPD	TODD CARLINI	Division/Group	
Lyon County	ROB LOVEBURG	Division/Group	
		Division/Group	
7. Planning Section		c. STAGING	
Chief	BOB REESE	Branch Director	
Deputy		Deputy	
Resources Unit	SANDY GREGORY; WADE BURLESON	Division/Group IA	ISAAC POWNING
Situation Unit	MARK BOHACH	Division/Group	
Documentation Unit		Division/Group	
Demobilization Unit	SEAN MEEVERS	Division/Group	
Fire Behavior Analyst	KEN RODGERS	Division/Group	
IMET	DANIEL HARTY	d. Air Operations Branch	
Training Specialist	ROSE HENDERSON	Air Operations Branch Director	RAY MOCKLI
GIS Specialist	J WATERMOLEN; A BRANT (t); B KIRK (t)	Helibase Manager	LEE STEWART
Computer Specialist	WOODY KESSLER	Air Attack Supervisor	TED MASON; JOSH FULTON (t)
Resource Advisor BLM	NIKI CUTLER	Air Support Supervisor	ERIC TAPLIN; GLEN DIETZ (t)
Resource Advisor BIA	MATT SPAULDING	Air Support Supervisor	EVERETT WENIGER
		Air Tanker Coordinator	MIKE KIDWELL
8. Logistics Section		10. Finance Section	
Chief	JOHN HOUK	Chief	DARCY CROTTEAU
Deputy		Deputy	
Supply Unit	STEVEN HOWELL	Time Unit	SUE CATHEY
Facilities Unit	SCOTT RICHEY	Procurement Unit	
Ground Support Unit	HARRY TUGGLE	Compensation/Claims Unit	
Communications Unit	BRYAN GRANATH	Cost Unit	CHARLES JOY
Medical Unit	C BAKER; A EISENBURG (t)	Prepared by (Resource Unit Leader)	
Security Unit	PETE DEANE	Sandy Gregory	
Food Unit	ZYZNIEWSKI; WOODS (t)		

Division Assignment List		1. Branch		2. Division/Group A			
3. Incident Name BISON		4. Operational Period 07/11/13 Thursday Day Shift 0600 - 2100					
5. Operations Personnel							
Operations Chief	RANDY ANDERSON; MIKE FRIEND (t)		Division/Group Supervisor	PAUL NAMAN; CARRIE THALER (t)			
Operations Chief	KENNETH SMIHULA; MIKE BOOMER (t)		Air Attack Supervisor	TED MASON; JOSH FULTON (t)			
Branch Director			Safety Officer	JOE NISHIKIDA; JUSTIN BROLLIER			
6. Resources Assigned this Period							
Strike Team/Task Force/ Resource Designator	Leader	Num of Pers.	Trans. Y/N	Drop Off PT./Time	Pick Up PT./Time		
HC2 IA BIA ENA #1 7/13	ROBERT HEADLEY	20	N	0600	2100		
HC2IA GRAYBACK 8A 7/16	RAMIRO MENDOSA	20	N	0600	2100		
ENG3 USFS OREGON #312 7/22	JOSE CASTILLO JR	5	N	0600	2100		
ENG6 UT SYRACUSE BRUSH E311 7/22	COREY SCOTT BYBEE	2	N	0600	2100		
EMTF 7/21	CHRIS GARVIN	1	N	0600	2100		
7. Control Operations							
SECURE HANDLINE AND MOP UP 1 CHAIN IN TO THE DEGREE NECESSARY TO MAKE LIKELIHOOD OF ESCAPE VERY LOW, BASED ON EXPERIENCE, TERRAIN, FUEL TYPES AND CURRENT/PREDICTED WEATHER CONDITIONS. ESTABLISH TRIGGER POINTS AND NOTIFY NIGHT OPERATIONS OF ANY SIGNIFICANT FIRE BEHAVIOR.							
SEE ATTACHED REHAB PLAN.							
8. Special Instructions							
Be aware of open shaft mines; gps and flag; stay a minimum of 50 ft away from mines.							
Maintain LCES							
Avoid using dozer on Indian Trust Land - Hydrate							
9. Division/Group Communications Summary							
Function	Frequency - RX	Frequency - TX	Tone	System	Channel	System	Channel
Command							
Tactical Div/Group			SEE	COMMO	PLAN		
Logistics							
Air to Ground							
Prepared by (Resource Unit Leader) Sandy Gregory		Approved by (Planning Section Chief) Bob Reese		Date Prepared 07/10/13		Time Prepared 0631	

Division Assignment List		1. Branch		2. Division/Group			
3. Incident Name BISON		4. Operational Period 07/11/13 Thursday Day Shift 0600 - 2100					
5. Operations Personnel							
Operations Chief	RANDY ANDERSON; MIKE FRIEND (t)		Division/Group Supervisor	MIKE ELLSWORTH; IAN RICKERT (t)			
Planning Operations	KENNETH SMIHULA; MIKE BOOMER (t)		Air Attack Supervisor	TED MASON; JOSH FULTON (t)			
Branch Director			Safety Officer	JOE NISHIKIDA; JUSTIN BROLLIER			
6. Resources Assigned this Period							
Strike Team/Task Force/ Resource Designator	Leader	Num of Pers.	Trans. Y/N	Drop Off PT./Time	Pick Up PT./Time		
HC2IA PVT GFP #2 7/17	JUSTIN WOOLF	20	N	ICP/0600	ICP/2000		
HC2IA BLM LAKEVIEW #2 7/21	MICHAEL MCGIRR	21	N	ICP/0600	ICP/2000		
HC2 TDFD ZEPHYR NV 7/21	KEEGAN SCHAFFER	18	N	ICP/0600	ICP/2000		
HC2 NDF INMATE ESCC#2 7/12	CHAD S MENA	21	N	ICP/0600	ICP/2000		
ENG4 - NV-BMD - 6411 7/13	CHRISTIAN	3	N	ICP/0600	ICP/2000		
ENG4 - NV-WID - # 2414 7/13	SCOTT W BRANDT	4	N	ICP/0600	ICP/2000		
ENG4 - NV-WID - 2441 7/13	ADAM J HARRISON	3	N	ICP/0600	ICP/2000		
ENG4 - E1440 - LIC I423 7/13	JOSHUA LAMBERT	3	N	ICP/0600	ICP/2000		
ENG6 - 4663 7/13	ANTHONY SIFRE	3	N	ICP/0600	ICP/2000		
WT2 -UT PIERCE FIRE 7/18		2	N	ICP/0600	ICP/2000		
TFLD 7/22	KYLE HUMPHREY	1	N	ICP/0600	ICP/2000		
EMTP 7/21	JEFF JAMES	1	N	ICP/0600	ICP/2000		
SOF2 7/20	SCOTT JOHNSON	1	N	ICP/0600	ICP/2000		
SOFR(t) 7/13	CHRIS GRAVES	1	N	ICP/0600	ICP/2000		
7. Control Operations							
SECURE HANDLINE AND MOP UP 1 CHAIN IN TO THE DEGREE NECESSARY TO MAKE LIKELIHOOD OF ESCAPE VERY LOW, BASED ON EXPERIENCE, TERRAIN, FUEL TYPES AND CURRENT/PREDICTED WEATHER CONDITIONS. ESTABLISH TRIGGER POINTS AND NOTIFY NIGHT OPERATIONS OF ANY SIGNIFICANT FIRE BEHAVIOR.							
SEE ATTACHED REHAB PLAN.							
8. Special Instructions							
Monitor primary Air to Ground frequency. Utilize seats and heavy airtankers. Monitor primary Air to Ground frequency.							
9. Division/Group Communications Summary							
Function	Frequency - RX	Frequency - TX	Tone	System	Channel	System	Channel
Command							
Tactical Div/Group			See	Commo	Plan		
Logistics							
Air to Ground							
Prepared by (Resource Unit Leader) Sandy Gregory			Approved by (Planning Section Chief) Bob Reese		Date Prepared 07/10/13	Time Prepared 0631	

Division Assignment List		1. Branch		2. Division/Group E			
3. Incident Name BISON		4. Operational Period 07/11/13 Thursday Day Shift 0600 - 2100					
5. Operations Personnel							
Operations Chief	RANDY ANDERSON; MIKE FRIEND (t)		Division/Group Supervisor	JOHN LUCUS; SCOTT ROBISON (t)			
Operations Chief	KENNETH SMIHULA; MIKE BOOMER (t)		Air Attack Supervisor	TED MASON; JOSH FULTON (t)			
Branch Director			Safety Officer	JOE NISHIKIDA; JUSTIN BROLLIER			
6. Resources Assigned this Period							
Strike Team/Task Force/ Resource Designator	Leader	Num of Pers.	Trans. Y/N	Drop Off PT./Time	Pick Up PT./Time		
IHC SILVER STATE 7/13	KEVIN KELLY	21	N	0600	2100		
IHC VISTA GRANDE 7/14	JESSE ESTRADA	19	N	0600	2100		
HC2IA NLTX RIFLE PEAK 7/14	JOSH HAGERTY	19	N	0600	2100		
EMTF - 7/20	BRAD MIHELIC	1	N	0600	2100		
SOF2 7/20	SCOTT JOHNSON	1	N	0600	2100		
SOFR (t)	CHRIS GRAVES (t)	1	N	0600	2100		
EMTP 7/21	WILLIAM MORGAN	1	N	0600	2100		
7. Control Operations							
SECURE HANDLINE AND MOP UP 1 CHAIN IN TO THE DEGREE NECESSARY TO MAKE LIKELIHOOD OF ESCAPE VERY LOW, BASED ON EXPERIENCE, TERRAIN, FUEL TYPES AND CURRENT/PREDICTED WEATHER CONDITIONS. ESTABLISH TRIGGER POINTS AND NOTIFY NIGHT OPERATIONS OF ANY SIGNIFICANT FIRE BEHAVIOR.							
8. Special Instructions							
Monitor primary Air to Ground frequency.							
9. Division/Group Communications Summary							
Function	Frequency - RX	Frequency - TX	Tone	System	Channel	System	Channel
Command							
Tactical Div/Group			SEE	COMMO	PLAN		
Logistics							
Air to Ground							
Prepared by (Resource Unit Leader) Sandy Gregory		Approved by (Planning Section Chief) Bob Reese		Date Prepared 07/10/13		Time Prepared 0631	

Division Assignment List	1. Branch	2. Division/Group F
---------------------------------	-----------	-------------------------------

3. Incident Name BISON	4. Operational Period 07/11/13 Thursday Day Shift 0600 - 2100
----------------------------------	---

5. Operations Personnel			
Operations Chief	RANDY ANDERSON; MIKE FRIEND (t)	Division/Group Supervisor	BEN BANISTER; JUSTIN REGELIN(t)
Planning Operations	KEN SMIHULA; MIKE BOOMER (t)	Air Attack Supervisor	TED MASON; JOSH FULTON (t)
Branch Director		Safety Officer	JOE NISHIKIDA; JUSTIN BROLLIER

6. Resources Assigned this Period					
Strike Team/Task Force/ Resource Designator	Leader	Num of Pers.	Trans. Y/N	Drop Off PT./Time	Pick Up PT./Time
HC2 USFS MENDOCINO 27 7/16	BRYAN BOATMAN	20	N	SMITH SPIKE/0600	SMITH SPIKE/2100
ENG3 - USFS - E-3 7/22	JASON FLORES	5	N	SMITH SPIKE/0600	SMITH SPIKE/2100
ENG4 - BLM-NV-SND - 5444 7/12	ALAN T DABASH	0	N	SMITH SPIKE/0600	SMITH SPIKE/2100
TFLD 7/22	EDDIE TAYLOR	1	N	SMITH SPIKE/0600	SMITH SPIKE/2100
SOFR 7/20	ROBERT HICKOK	1	N	SMITH SPIKE/0600	SMITH SPIKE/2100
EMTP 7/21	WILLIAM MORGAN	1	N	SMITH SPIKE/0600	SMITH SPIKE/2100

7. Control Operations

SECURE HANDLINE AND MOP UP 1 CHAIN IN TO THE DEGREE NECESSARY TO MAKE LIKELIHOOD OF ESCAPE VERY LOW, BASED ON EXPERIENCE, TERRAIN, FUEL TYPES AND CURRENT/PREDICTED WEATHER CONDITIONS. ESTABLISH TRIGGER POINTS AND NOTIFY NIGHT OPERATIONS OF ANY SIGNIFICANT FIRE BEHAVIOR.

8. Special Instructions

Nevada Task Force for IA.
Monitor primary Air to Ground frequency.

9. Division/Group Communications Summary							
Function	Frequency - RX	Frequency - TX	Tone	System	Channel	System	Channel
Command							
Tactical Div/Group			See	Como	Plan		
Logistics							
Air to Ground							
Prepared by (Resource Unit Leader) Sandy Gregory			Approved by (Planning Section Chief) Bob Reese		Date Prepared 07/10/13	Time Prepared 0631	

Division Assignment List		1. Branch		2. Division/Group			
3. Incident Name BISON		4. Operational Period 07/11/13 Thursday Day Shift 0600 - 2100					
5. Operations Personnel							
Operations Chief	RANDY ANDERSON; MIKE FRIEND (t)		Division/Group Supervisor	ERIC PLATZ; ERIC NOLAN (t)			
Plans/Operations Chief	KENNETH SMIHULA; MIKE BOOMER (t)		Air Attack Supervisor	TED MASON; JOSH FULTON (t)			
Branch Director			Safety Officer	JOE NISHIKIDA; JUSTIN BROLLIER			
6. Resources Assigned this Period							
Strike Team/Task Force/ Resource Designator	Leader	Num of Pers.	Trans. Y/N	Drop Off PT./Time	Pick Up PT./Time		
IHC BOISE 7/20	DEON BERNER	23	N	0600	SMITH SPIKE/2100		
IHC SAWTOOTH 7/20	MICHAEL KRUPSKI	20	N	0600	SMITH SPIKE/2100		
IHC FLATHEAD 7/15	TYLER JAMES	19	N	0600	SMITH SPIKE/2100		
IHC SHASTA LAKE 7/14	DONOVAN LEE	20	N	0600	SMITH SPIKE/2100		
HC2IA GRAYBACK 8B 7/16	NYGHEN	20	N	0600	SMITH SPIKE/2100		
HC2 NDF INMATE ESCC#1 7/21	RICH BOWMAN	26	N	0600	SMITH SPIKE/2100		
HC2 USFS CREW 7 7/22	ANDY TOMPKINS	19	N	0600	SMITH SPIKE/2100		
ENG3 NV SPARKS BRUSH 41 7/20	JUSTIN LANGFORD	3	N	0600	SMITH SPIKE/2100		
ENG3 BLM 3335 7/13	STEPHEN LEVITT	4	N	0600	SMITH SPIKE/2100		
ENG3 NEVADA MSVX - B4 7/19	ROBIE ROSASCHI	2	N	0600	SMITH SPIKE/2100		
ENG3 NEVADA MSVX - B3 7/19	KEVIN MAY	2	N	0600	SMITH SPIKE/2100		
ENG3 - USFS - TNF - 73 7/21	BRYAN ROSENOW	5	N	0600	SMITH SPIKE/2100		
ENG3 - USFS - TNF - 341 7/21	JEB PRONTO	5	N	0600	SMITH SPIKE/2100		
ENG4 USFS UT E441 7/22	LISA SCHULDT	5	N	0600	SMITH SPIKE/2100		
ENG4 FWS E-841 7/14	PAUL BASYE	3	N	0600	SMITH SPIKE/2100		
ENG4 USFS UT #411 7/22	SARAH EVANS	5	N	0600	SMITH SPIKE/2100		
ENG6 BLM - WID - 2642 7/19	LUCA BERNARDI	1	N	0600	SMITH SPIKE/2100		
7. Control Operations							
<p>SECURE HANDLINE AND MOP UP 1 CHAIN IN TO THE DEGREE NECESSARY TO MAKE LIKELIHOOD OF ESCAPE VERY LOW, BASED ON EXPERIENCE, TERRAIN, FUEL TYPES AND CURRENT/PREDICTED WEATHER CONDITIONS. ESTABLISH TRIGGER POINTS AND NOTIFY NIGHT OPERATIONS OF ANY SIGNIFICANT FIRE BEHAVIOR.</p>							
8. Special Instructions							
<p>As DIV G moves through DIV D notify DIV D from Buckeye Staging to DP20. Monitor primary Air to Ground frequency. Be aware of open shaft mines; gps and flag; stay a minimum of 50 ft away from mines. Hydrate-maintain LCES.</p>							
9. Division/Group Communications Summary							
Function	Frequency - RX	Frequency - TX	Tone	System	Channel	System	Channel
Command							
Tactical Div/Group			See	Commo	Plan		
Logistics							
Air to Ground							
Prepared by (Resource Unit Leader) Sandy Gregory		Approved by (Planning Section Chief) Bob Reese			Date Prepared 07/10/13		Time Prepared 0630

Division Assignment List			1. Branch		2. Division/Group G		
3. Incident Name BISON			4. Operational Period 07/11/13 Thursday Day Shift 0600 - 2100				
5. Operations Personnel							
Operations Chief		RANDY ANDERSON; MIKE FRIEND (t)		Division/Group Supervisor		ERIC PLATZ; ERIC NOLAN (t)	
Planning Operations		KEN SMIHULA; MIKE BOOMER (t)		Air Attack Supervisor		TED MASON; JOSH FULTON (t)	
Branch Director				Safety Officer		JOE NISHIKIDA; JUSTIN BROLLIER	
6. Resources Assigned this Period							
Strike Team/Task Force/ Resource Designator		Leader		Num of Pers.	Trans. Y/N	Drop Off PT./Time	Pick Up PT./Time
DOZ2 NEVADA STOX - 76 7/20		DERRICK COVEY		3	N	0600	SMITH SPIKE/0600
DOZ2 NEVADA STOX - 77 7/15		SHANE DIXON		3	N	0600	SMITH SPIKE/0600
DOZ2 NEVADA STOX - 78		JASON SPELTZ		2	N	0600	SMITH SPIKE/0600
DOZ2 PVT DOUG HENDON - 2KD 7/17		DOUG HENDON		2	N	0600	SMITH SPIKE/0600
WT2 PVT WATER SUPP 2 7/23		HOUGHT BAKER		2	N	0600	SMITH SPIKE/0600
WTT2 - PVT ALPINE FIRE 2 7/21		GILES		2	N	0600	SMITH SPIKE/0600
WTS2 PVT JOHN RYAN 7/22		BUD MARTIN		1	N	0600	SMITH SPIKE/0600
STEN 7/22		RICHARD J MORRIS		1	N	0600	SMITH SPIKE/0600
TFLD		LINDA FERGUSON		1	N	0600	SMITH SPIKE/0600
HEQM STOX 77		JOHN PERHAX		1	N	0600	SMITH SPIKE/0600
HEQM STOX 78		JASON SPELTZ		1	N	0600	SMITH SPIKE/0600
HEQM STOX 76		DANEN		1	N	0600	SMITH SPIKE/0600
AMBULANCE - T2 - MSVX -R#107 7/21		ANDREW CHRZANOWSKI		2	N	0600	SMITH SPIKE/0600
SOFR(t) 7/20		ROBERT A HICKOK		1	N	0600	SMITH SPIKE/0600
EMTP 7/21		JEFF DAVIES		1	N	0600	SMITH SPIKE/0600
READ		SANDSTROM		1	N	0600	SMITH SPIKE/0600
READ		JEFFERY		1	N	0600	SMITH SPIKE/0600
READ		DAVIES		1	N	0600	SMITH SPIKE/0600
READ		WETTSTAD		1	N	0600	SMITH SPIKE/0600
7. Control Operations							
see page 1 for instructions							
8. Special Instructions							
see page 1 for instructions							
9. Division/Group Communications Summary							
Function	Frequency - RX	Frequency - TX	Tone	System	Channel	System	Channel
Command							
Tactical Div/Group			See	Commo	Plan		
Logistics							
Air to Ground							
Prepared by (Resource Unit Leader) Sandy Gregory			Approved by (Planning Section Chief) Bob Reese		Date Prepared 07/10/13		Time Prepared 2026

Division Assignment List	1. Branch	2. Division/Group M
---------------------------------	-----------	-------------------------------

3. Incident Name BISON	4. Operational Period 07/11/13 Thursday Day Shift 0600 - 2100
----------------------------------	---

5. Operations Personnel			
Operations Chief	RANDY ANDERSON; MIKE FRIEND (t)	Division/Group Supervisor	CASEY JONES; JOHN PALMA (t)
Planning Operations	KEN SMIHULA; MIKE BOOMER (t)	Air Attack Supervisor	TED MASON; JOSH FULTON (t)
Branch Director		Safety Officer	JOE NISHIKIDA; JUSTIN BROLLIER

6. Resources Assigned this Period					
Strike Team/Task Force/ Resource Designator	Leader	Num of Pers.	Trans. Y/N	Drop Off PT./Time	Pick Up PT./Time
HC2 USFS ENF AMERICORPS 7/16	KARL JON GOODWIN	3	N	0600	2100
HC2 NDF INMATE TCC#1 7/16	DANIEL C MORGAN	26	N	0600	2100
HC2 NDF INMATE PCC #2 7/17	TYSON NELSON	24	N	0600	2100
ENG3 - NEVADA - NWS - 5102 7/19	ANTHONY D SEGHIERI	3	N	0600	2100
STCR 7/21	JAMES DICKINSON	1	N	0600	2100

7. Control Operations
 SECURE HANDLINE AND MOP UP 1 CHAIN IN TO THE DEGREE NECESSARY TO MAKE LIKELIHOOD OF ESCAPE VERY LOW, BASED ON EXPERIENCE, TERRAIN, FUEL TYPES AND CURRENT/PREDICTED WEATHER CONDITIONS.
 ESTABLISH TRIGGER POINTS AND NOTIFY NIGHT OPERATIONS OF ANY SIGNIFICANT FIRE BEHAVIOR

8. Special Instructions
 Monitor primary Air to Ground frequency.
Be aware of open shaft mines; gps and flag; stay a minimum of 50 ft away from mines.
 Avoid using dozers on Indian Trust Lands.
 Hydrate - Maintain LCES

9. Division/Group Communications Summary							
Function	Frequency - RX	Frequency - TX	Tone	System	Channel	System	Channel
Command							
Tactical Div/Group			See	Commo	Plan		
Logistics							
Air to Ground							
Prepared by (Resource Unit Leader) Sandy Gregory				Approved by (Planning Section Chief) Bob Reese		Date Prepared 07/10/13	Time Prepared 0630

Division Assignment List		1. Branch		2. Division/Group Staging IA			
3. Incident Name BISON		4. Operational Period 07/11/13 Thursday Day Shift 0600 - 2100					
5. Operations Personnel							
Operations Chief	JOHN ANDERSON; MIKE FRIEND (t)		Division/Group Supervisor	ISAAC POWNING			
Planning Operations	KEN SMIHULA; MIKE BOOMER (t)		Air Attack Supervisor	TED MASON; JOSH FULTON (t)			
Branch Director			Safety Officer	JOE NISHIKIDA; JUSTIN BROLLIER			
6. Resources Assigned this Period							
Strike Team/Task Force/ Resource Designator	Leader	Num of Pers.	Trans. Y/N	Drop Off PT./Time	Pick Up PT./Time		
HC2IA PVT GRAYBACK 7A 7/18	RYAN WATKINS	20	N	0600	2100		
HC2 USFS OC26 7/17	FRANK JOHN ALVES	19	N	0600	2100		
HC2 USFS OC-20 7/17	MATT LINGENFELTER	19	N	0600	2100		
HC2 NDF INMATE HCC #1 7/21	JASON HUGHES	26	N	0600	2100		
BIG HILL HELISHOTS	KAFKA	18	N	0600	2100		
ENG3 UT UFA 302 7/22	PAUL STORY	3	N	0600	2100		
ENG3 NEVADA B5121 7/17	JEREMY KIZER	3	N	0600	2100		
WTT1 PVT SILVER STATE 2 7/18		2	N	0600	2100		
WTT1 NV CARSON WATER 259 7/19	CHARLES NOFTSKER	1	N	0600	2100		
WT2 - CNTY STOX 71 7/18	PETER WOBBE	1	N	0600	2100		
WT2 PVT WATER SUPP 2 7/23	KAY BAKER	1	N	0600	2100		
TFLD 7/15	TIMOTHY BOYCE	1	N	0600	2100		
7. Control Operations							
8. Special Instructions							
Maintain IA readiness, monitor radio for deployment. Maintain LCES							
9. Division/Group Communications Summary							
Function	Frequency - RX	Frequency - TX	Tone	System	Channel	System	Channel
Command							
Tactical Div/Group			See	Commo	Plan		
Logistics							
Air to Ground							
Prepared by (Resource Unit Leader) Sandy Gregory			Approved by (Planning Section Chief) Bob Reese		Date Prepared 07/10/13		Time Prepared 0630

Air Operations Summary

Prepared by
AOBD W. Ray Mockli

Date Prepared
07/10/13

Time Prepared
1900

1. Incident Name
BISON

2. Operational Period
07/11/13 Thursday Day Shift 0600 - 2100

Sunrise
0543

Sunset
2026

3. REMARKS (Safety Notes, Hazards, Air Operations Special Equipment, etc.):

Temporary Tower at Minden to mitigate complexities created with additional aviation activity NOTAM 07/005. Tower Frequency: 125.225. Helibase established in Smith Valley
.Lat: 38 50.568 X Long 119 20.117. Please monitor A/G Primary unless directed by ATGS to switch to Secondary. Some radios only scan one FM frequency. Notam in place for aircraft at Smith Helibase. Always check for new TFR changes! IA within TFR is Whalen' Team 3 responsibility.

4. MEDEVAC AIRCRAFT:

2HP or available aircraft, also see med plan.
FDC 3/1550
From: 39°04'20"N 119°32'28"W
To: 39°05'22"N 119°19'38"W
To: 38°49'37"N 119°25'01"W
To: 38°48'55"N 119°34'32"W
Altitude: From the surface up to and including 12000 feet MSL
Frequency 123.175

5. TFR:

6. PERSONNEL	Phone #	7. FREQUENCY	AM RX/TX	FM RX/TX	8. FIXED-WING	# Avail/Type/Make-Model/FAA#/Base(s)
AOBD W. Ray Mockli	208-409-1440	A/A Primary	123.1750		Heavy Air Tankers	Order thru ATGS or OPS
ASGS Eric Taplin	208-634-9425	A/A Secondary	132.0250			
ASGS (t) Glenn Dietz	530-227-0017	A/G Primary		166.7500	Leadplanes Base FAX#:	Order thru ATGS or OPS
HEB1 Lee Stewart Bison HB	775-220-6364	A/G Secondary		168.5375		
HEB1 Dan Sepulveda Smith HB	775-465-1012	Deck Bison HB		163.100	SEATS	828, 871, 894, 893, 883, RON Stead, reload Minden, UAM Mike Kidwell is SEBM 775-721-3764
HILCO Billy Gardunio	530-604-8643	Deck Smith HB		168.350	ATGS Platforms	6619V, 27LK, Carson Airport Mason 208-921-3245, Fulton 702-218-8502, Weniger 406-381-4176

9. HELICOPTERS (Use additional Sheets As Necessary)

FAA N#	TY	MAKE/MODEL	BASE	AVAIL	START	REMARKS	FAA N#	TY	MAKE/MODEL	BASE	AVAIL	START	REMARKS
407DP	3	Bell 407	Bison HB			A-43 Unavailable	490SA	2	Bell 205++	Bison HB	8:00	8:30	516 A-7
2HP	3	Bell L-4	Bison HB	7:00	7:30	A-49	73HJ	2	Bell 212HP	Bison HB	8:00	8:30	Lucky Peak A-29
206SG	3	Bell L-4	Smith HB	7:00	7:30	A-64	610WW	2	Bell 210	Bison HB	8:00	8:30	506 A-30
71HM	3	Bell L-4	Bison HB	8:00	8:30	A-66	212AH	2	Bell 212	Smith HB	8:00	8:30	Tentatively Release
202WM	1	KMAX	Smith HB	8:00	8:30	A-54	205SJ	2	Bell 205	Smith HB	8:00	8:30	Tentatively Release
218AC	1	S-64	Bison HB	8:00	8:30	HT 741 A-3							
190CH	1	BV-107	Bison HB	8:00	8:30	A-37							
2FH	1	S-70C	Bison HB	8:00	8:30	Tentatively Release							

Air Operations Summary

Prepared by
AOBD W. Ray Mockli

Date Prepared
07/10/13

Time Prepared
1900

1. Incident Name

BISON

2. Operational Period

07/11/13 Thursday Day Shift 0600 - 2100

Sunrise
0543

Sunset
2026

9. HELICOPTERS (Continued)

FAA #	TY	MAKE/MODEL	BASE	AVAIL	START	REMARKS	FAA #	TY	MAKE/MODEL	BASE	AVAIL	START	REMARKS

10. TASK/MISSION/ASSIGNMENT (Type/Function Includes: Air Tactical, Retardant, Recon, Personnel Transport, Water Dropping, S&R, etc.)

TYPE/FUNCTION	NAME OF PERSONNEL OR CARGO (if applicable) OR INSTRUCTIONS FOR TACTICAL AIRCRAFT	MISSION START	FLY FROM	FLY TO
SEATS	Support Divisions as requested	8:00	Stead/Minden	Fire
Heavy AT	Support Divisions as requested	8:00	Stead	Fire
ATGS, LEADS, ASM	Support Divisions as requested	8:00	Minden/Stead	Fire
Rotor	Support Divisions as requested	8:00	Bison Helibase	Fire
Rotor Type 2 or 3	Personnel Transport and Cargo as needed	8:00	Bison Helibase	
Rotor Type 3	Recon with DIV/OPS as request	8:00	Bison Helibase	ICP
		8:00	Bison Helibase	Fire
Water Tanders	E-102 Bison HB, E-53 Dip site, E-125 Smith HB, E-25 Smith	7:00		
Helibase Trailers	E-18 Bison HB, E-99 Smith HB	7:00		
Crash Rescue	E-37 Bison HB	7:00		
Mobile Retardant Plant Reload	A-14	8:00		
FAA Tower	A-58	8:00		



INCIDENT Weather Forecast



FORECAST NO: 8
PREDICTION FOR: Day SHIFT
SHIFT DATE: 7/11/13
 0600 - 1800 PDT

NAME OF FIRE: Bison Fire
UNIT: BIA
SIGNED: Dan Harty *Dan Harty*
Incident Meteorologist

TIME AND DATE FORECAST ISSUED: 2000 PDT 7/10/13

...RED FLAG WARNING IN EFFECT FOR GUSTY WINDS AND LOW RELATIVE HUMIDITY FROM 1PM TO 10 PM...

...20 PERCENT CHANCE OF THUNDERSTORMS TODAY WITH GUSTY/ERRATIC WINDS POSSIBLE...

WEATHER DISCUSSION: A dry lower atmosphere and gusty afternoon winds will lead to critical fire weather conditions again today. Subtropical moisture will maintain a slight chance of thunderstorms today. Gusty outflow winds around 50 mph are possible near any thunderstorms. The lower atmosphere will remain dry and any precipitation would likely evaporate before reaching the ground...resulting in virga. Remember that gusty downdraft winds are possible around virga too. A dry southwest flow aloft returns Friday ending the chance of thunderstorms through the weekend.

WEATHER FORECAST for THURSDAY:

WEATHER: Partly cloudy with a 20 percent chance of thunderstorms. Gusty and erratic wind possible near thunderstorms.

MAX TEMPERATURES: 73-78 mid slope and ridge tops...82-86 lower elevations.

MIN HUMIDITY: 12-18 percent.

20 FT WINDS: ...Downdraft wind gusts around 50 mph possible near thunderstorms...

SLOPE/VALLEY - Upslope 3-7 mph in the morning becoming southwest to west 15-25 mph with gusts up to 40 mph after 1 pm.

RIDGETOP - Southwest to west 10-15 mph with gusts to 25 mph in the morning...increasing to 20-25 mph with gusts up to 40 mph after 1 pm.

LAL: 2 Chance of Wetting Rain: 5% HAINES INDEX: 5

THURSDAY NIGHT: Partly cloudy with a slight chance of thunderstorms in the evening...becoming mostly clear after midnight. Lower elevations southwest to west 15 to 20 mph with gusts around 35 mph in the evening...becoming downslope 2-5 mph after 10 pm. Ridgetop winds southwest to west 20-25 mph with gusts up to 40 mph in the evening...decreasing to 10-15 mph with gusts up to 25 mph after midnight. Minimum temperatures 56-62. Poor humidity recoveries of 25-35 percent.

OUTLOOK FOR FRIDAY THROUGH SUNDAY: Partly cloudy Friday then mostly sunny over the weekend. Slight warming over the weekend...with continued low relative humidity and poor overnight recovery. Winds westerly...gusts around 30 mph possible in the afternoon and evenings.

FIRE BEHAVIOR FORECAST

FORECAST NUMBER: 9	TYPE OF FIRE: Wildland Fire
FIRE NAME: Bison	OPERATIONAL PERIOD: Day Shift, July 11, 2013
DATE ISSUED: July 10, 2013	TIME ISSUED: 2200
UNIT: BIA / Multi	SIGNED: /s/ Ken Rodgers FBAN <i>Ken Rodgers</i>

INPUTS

WEATHER SUMMARY: See attached Fire Weather Forecast

RED FLAG WARNING FOR GUSTY WINDS AND LOW RELATIVE HUMIDITY
20 PERCENT CHANCE OF THUNDERSTORMS WITH GUSTY AND ERRATIC WINDS

OUTPUTS

FIRE BEHAVIOR

GENERAL:

Low to minimal activity is anticipated within the fire perimeter. Limited smoldering, surface burning and burnout of fuels in interior islands are possible in pinyon-juniper and brush patches where active burning last occurred on the fire. The potential still exists for isolated torching that can result in spotting outside the current perimeter. Re-ignition could result in fire movement influenced by terrain, fuels along with hot, dry and windy weather conditions. Should the fire escape the perimeter, then active, intense burning and rapid spread are possible in all fuel types. Burning can continue into the night because of dry fuel conditions and poor humidity recovery on ridges and slopes. Burning intensity has subsided around sundown, but has continued into the night because of dry fuels and poor humidity recovery on ridges and slopes. Thunderstorm downdrafts can cause changes in fire direction and intensity.

SPECIFIC:

Division A & M: Minimal activity is expected in these divisions. Isolated hot spots and stump holes are likely along the perimeter and within the interior of the burn.

Division D: This division could experience minimal to low activity depending on heat remaining from past burn days. Smoldering and hot spots are likely along the perimeter and within the interior along drainage bottoms and unburned/dirty burn islands. Heat remains near the perimeter that can flare up and be influenced by possible thunderstorm winds.

Division E & G: These divisions could experience minimal to low activity depending on heat remaining from recent burning prior to containment. Smoldering and hot spots are likely along the perimeter and within the interior along drainage bottoms and unburned/dirty burn islands. Heat remains near the perimeter that can flare up and be influenced by possible thunderstorm winds. If the fire escapes containment on Division G it is likely to move south and downslope into Pipeline Canyon. Upslope and northerly movement on Division E is likely should the fire escape containment here.

Division F: Minimal activity is expected in this division. Isolated hot spots and stump holes are likely along the perimeter and within the interior of the burn.

Initial Attack Actions: Potential for intense burning and rapid spread on new starts in all fuel types in the response area.

AIR OPERATIONS:

Visibility for air operations should be good. Turbulence can be expected with afternoon and thunderstorm winds over the fire and dipsites. Elevation and high air temperatures can limit aircraft performance. Blowing dust, ash and dust devils are likely with afternoon winds.

SAFETY

Remember that afternoon and thunderstorm winds can align with terrain to move fire rapidly across, down and upslope

Forecasted ERC is 88, below the 90th percentile and trending slightly downward

Incident Radio Communications Plan	1. Incident Name BISON	2. Operational Period 07/11/13 Thursday Day Shift 0600 - 2100
---	---------------------------	--

3. Basic Radio Channel Utilization

Radio Type	Channel	Function	Frequency/Tone		Assignment	Remarks
NIFC	1	Tactical	RX 168.0500N	TX 168.0500N	Division D	
			N/A			
NIFC	2	Tactical	RX 168.2000N	TX 168.2000N	Div	
			N/A			
NIFC	3	Tactical	RX 168.6000N	TX 168.6000N	Div	
			N/A			
NIFC	4	Tactical	RX 166.7250N	TX 166.7250N	Div	
			N/A			
NIFC	5	Tactical	RX 166.7750N	TX 166.7750N	Div	
			N/A			
NIFC	6	Tactical	RX 168.2500N	TX 168.2500N	Div G	
			N/A			
NIFC	7	Tactical	RX 166.6750N	TX 166.6750N	Div E IA Staging	
			N/A			
NIFC	8	Tactical	RX 169.1500N	TX 169.1500N	Safety/Med	
			N/A			
NIFC	9	Air/Grn 21	RX 166.7500N	TX 166.7500N	All Divisions	Primary
			N/A			
NIFC	10	AIR/GN 39	RX 168.5375N	TX 168.5375N	ALL DIVS	Secondary
			N/A			
NIFC	11	NIFC CMD 3	RX 168.0750N	TX 170.4250N	Division A/M	
			131.8			
NIFC	12	NIFC CMD 10	RX 170.4125N	TX 165.9625N	All Divisions	
			100.7			
NIFC	13	NIFC CMD 26	RX 163.3375N	TX 171.7500N	SMITH VLY	
			131.8			
NIFC	14	NIFC CM 27	RX 166.2750N	TX 169.6500N	ALL DIVS	
			131.8			
NIFC	15	HTF HAWKNS	RX 169.8750N	TX 170.4750N	All Divisions	
			131.8			
NIFC	16	AIR GUARD	RX 168.6250N	TX 168.6250N	All Divisions	
			N/A			

4. Prepared by (Communications Unit) Bryan Granath per Mike Friend	5. Date Prepared 07/10/13	6. Time Prepared 0630
---	------------------------------	--------------------------

Incident: BISON	Date: 7-11-2013	Shift: Day
---------------------------	---------------------------	----------------------



SAFETY IS OUR FIRST PRIORITY

Fire fighter safety comes first on every fire, every time



LCEC FIREFIGHTER'S CODE OF CONDUCT INCIDENT POCKET GUIDE WORK-REST GUIDELINES

SAFETY THOUGHT

While wildland firefighters do not expect to be entrapped on fire assignments, the probability always exists.

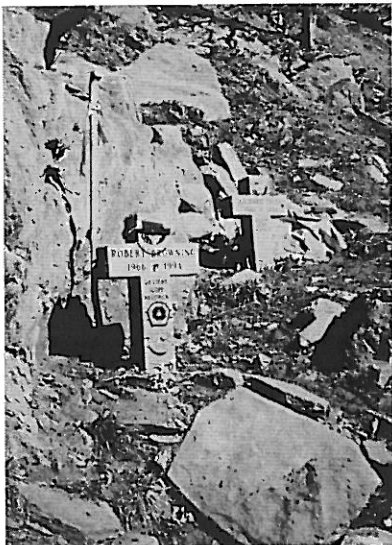


**.....REMEMBER.....
6-MINUTES FOR SAFETY**



Major Hazards and Risks		
Erratic Fire Behavior <ul style="list-style-type: none"> • Frontal Passing • Thunder Cell Down Drafts • Extremely Low RH • Thunder storm 	Environmental <ul style="list-style-type: none"> • Slip, Trip and fall • Rolling rocks • Snags 	Health <ul style="list-style-type: none"> • Heat Exhaustion • Fatigue

COMMON DENOMINATORS OF FIRE BEHAVIOR ON TRAGEDY FIRES



- Most incidents happen on the smaller fires or on isolated portions of larger fires.
- Most fires are innocent in appearance before the “flare-ups” or “blow-ups”. In some cases, tragedies occur in the mop-up stage.
- Flare-ups generally occur in deceptively light fuels.
- Fires run uphill surprisingly fast in chimneys, gullies, chutes and on steep slopes.
- Some suppression tools, such as helicopters or air tankers, can adversely affect fire behavior. The blasts of air from low flying helicopters and air tankers have been known to cause flare-ups.

INCIDENT RISK ANALYSIS (215a 07-11-2013 D)

Div	Hazardous Actions or Mitigations	Mitigations /Warnings/Remedies ** Denotes Common Denominator of Tragedy Fires
ALL	Downhill Fireline Construction Under-slung Fire line Construction Mid-slope Fire line Construction Frontal Attack Anchor Points Extreme Conditions/Weather Light Fuels** Uphill Runs** Small→Large Fire**	<ul style="list-style-type: none"> • LCES • Review weather conditions • Review fire activity in relation to fuels, topography, aspect, slope and weather • Establish, maintain and reevaluate all anchor points • Establish decision points to implement change or alter actions • For extreme conditions and weather, establish alternatives (time tag critical situations)
ALL	Spotting Torching	<ul style="list-style-type: none"> • Watch for smoldering fires picking up over large areas, trees crowning out inside of fireline, high sustained rate of spread, well-developed convection column, hot/dry weather • Patrol for spots especially after torching • Post lookouts • Grid green areas
ALL	RH<25%, Drought Temps >85F Direct Sun Dead / dying Fuels Fuel Loads >10T/Ac Winds>10MPH**	<ul style="list-style-type: none"> • Watch potential for torching, spotting, re-burn, and erratic, extreme fire behavior • Staff dedicated lookouts at pre-identified vantage points • Take hourly weather observations over command frequency • Establish effective radio repeaters to reach all divisions. Confirm radio frequencies • Consider vegetation and terrain and flag and time multiple escape routes and Improve/construct safety zones
ALL	Communication	<ul style="list-style-type: none"> • Verify effective radio repeaters to reach all divisions. • Confirm radio frequencies (look at 205) • Warn incoming ground forces of possible gaps in the repeater as well as ComUL • Review alternatives for emergency radio traffic (air tactical if necessary) • Use human repeaters
ALL	Dehydration Heat Stress Crew Fatigue (Heat induced)	<ul style="list-style-type: none"> • Drink plenty of fluids (1 qt/hr); • Ensure adequate replacement water supplies • Discourage use of undiluted energy drinks • Pace work; allow frequent periods of rest in shade, if possible • Limit shift lengths • Acclimate to extreme heat; schedule hardest work during cooler hours of the day • Monitor fitness of crews for assignments • Focus on crews when productivity becomes reduced.
ALL	Slopes>50% Rolling Rocks	<ul style="list-style-type: none"> • Identify chimneys, gullies, and/or steep slopes in work area • Post lookouts, issue warnings • Improve/construct, flag/time escape routes and safety zones • Identify, flag, avoid rock hazards • Keep crews from below known hazard areas • Wear proper and good condition fire boots to avoid slips and falls. • Identify safe routes and maintain 10 feet spacing • Make sure you go slowly and watch your step • Always carry tools on the downhill side.
ALL	Chain Saw Operations	<ul style="list-style-type: none"> • <u>Use chain guards when transporting saws, DO NOT drop start saws!</u> • Only employees who are trained and certified will operate chain saws under any conditions. • No employee shall approach a felling operation closer than 3 tree lengths of the tree being felled. • Low speed saw injuries may indicate inattention (possibly due to dehydration) • Use swampers, watch spacing, and wear all PPE. • Review saw accidents to determine if it is a result of fatigue /dehydration
ALL	Structure Protection	<ul style="list-style-type: none"> • Situational Awareness - preplan exit strategy, fire protection actions, fire suppression actions if appropriate. • Mark all entrances with flagging (writing address on flagging) and place conspicuously
ALL	Air Ops	<ul style="list-style-type: none"> • SA on retardant drops (tankers and Helicopter) • Maintain radio contact with air assets to ensure clear drop areas • Give feedback to air assets and line crew's
ALL	Mine Shafts	<ul style="list-style-type: none"> • Warn ground forces, scout work areas, flag any that are found and inform others. • Use yellow/black striped flagging for hazards and other colors with writing describing its

		purpose
ALL	Hazardous Materials	<ul style="list-style-type: none"> • Burning household products and possible Meth Labs • Identify and protect residential propane, liquid fuel
ALL	Lightning Storms (IRPG 40)	<ul style="list-style-type: none"> • Watch for sudden reversal of wind direction and increased speed, drop in temperature • Don't use the radio or telephone; turn off generators and electrical equipment • Put down hand tools • Avoid grouping together, sit/crouch, or if in open country stay in vehicle if possible • Avoid standing near high objects, ridge tops, open spaces, ledges, rock outcroppings • Keep away from wire fences; move away from horses and stock
ALL	Flash Flooding	<ul style="list-style-type: none"> • Stay out of low areas, gullies at the start of the rain • Don't drive in streets covered with water
ALL	Rehabilitation	<ul style="list-style-type: none"> • Use tools effectively • Warn crews to pull brush straight and not twist their backs, wear eye protection, watch spacing. • Use tool with appropriate PPE (Helmet, goggles, gloves and chaps if using a chain saw.

Incident Communication Center Protocol Standard Elements

COML/designee will ensure the following information is obtained and recorded during medical emergencies:

For medical emergencies en route to fire, or on the line:

1. Determine the nature/severity of the emergency.
2. If the medical emergency is severe, request that command be cleared for emergency traffic.
3. Contact Operations, Air Operations, Safety Officer, and Medical Unit Leader.
4. Identify on scene Point of Contact by resource and last name (i.e. contact is TFLD Smith).
5. Identify on scene medical personnel by position and last name (i.e. EMT Jones).
6. Determine:
 - A. Nature of incident
 - B. Number injured/ill
 - C. Location (geographic and GPS Coordinates)
 - D. Method of transport
7. Record patient assessments.
8. Assist making contact to appropriate dispatch centers with Medical Unit Leader.
9. Determine if any additional resources and/or equipment are needed.
10. Document all information received and transmitted on the radio or phone.
11. Document any changes in Point of Contact and medical personnel as they occur.
12. Do not transmit the patient's name on the radio.

For medical emergencies in camp/off-site:

1. Determine the nature/severity of the emergency.
2. If the medical emergency is severe, request that command be cleared for emergency traffic.
3. Contact Safety Officer and Medical Unit Leader.
4. Identify on scene medical personnel by position and last name (i.e. EMT Jones).
5. Determine:
 - E. Nature of incident
 - F. Number injured/ill
 - G. Location in camp
 - H. Method of transport
6. Record patient assessments.
7. Assist making contact to appropriate dispatch centers with Medical Unit Leader.
8. Determine if any additional resources and/or equipment are needed.
9. Document all information received and transmitted on the radio or phone.
10. Document any changes in Point of Contact and medical personnel as they occur.
11. Do not transmit the patient's name on the radio.

Prepared by (Medical Unit Leader)
Curtis Baker/ Andy Isenberg

Reviewed by (Safety Officer)
Joe Nashikida/ Justin Brollier

MEDICAL PLAN	1. Incident Name Bison Fire	2. Date Prepared July 11, 2013	3. Time Prepared 1700	4. Operational Period 0600-2100			
	5. Incident Medical Aid Station						
Medical Aid Stations		Location		Paramedics Yes No			
Bison Fire ICP		ICP (N 38°54.34 W 119°40.62)		X			
Smith Valley Med Unit		Smith Valley High School (N38° 48.26 W119° 19.61)		x			
6. Transportation							
A. Ambulance Services							
Name	Address	Phone	Paramedics Yes No				
EFFPD	Gardnerville, NV	775-782-9735	X				
REMSA AIR (Care Flight)	Reno, NV, Truckee, CA, Gardnerville, NV	775-782-9735	X				
Cal Star (Air Ambulance)	South Lake Tahoe	775-782-9735	X				
Smith Valley VFD	1 Hardie Ln, Smith Valley, NV	775-465-2577	x				
B. Incident Ambulances							
EFFPD R-107		Smith Valley Fire Station #42		x			
7. Hospitals							
Name	Address	Travel Time Air Ground	Phone	Helipad Yes No	Burn Center Yes No		
CVMC	1107 Hwy 395, Gardnerville NV (N 38°55.15 W 119°43.12)	10 15	775-782-1600	x	x		
CTRMC	1600 Medical Pky, Carson City NV (N 39°12.12 W 119° 47.03)	20 40	775-886-6966	x	x		
Renown (Trauma)	1155 Mill St. Reno, NV (N 39° 31.50 W 119° 47.65)	30 60	775-982-2005	x	x		
UC Davis	Sacramento, CA (N 38° 33.12 W 121° 27.32)	60 3hr	916-734-2011	x	X		
South Lyon	213 Whitacre Ln, Yerington, NV (N 38° 59.07 W 119° 10.07)	10 30	775-463-2303	X	x		
8. Medical Emergency Procedures							
<p>All engines & crews identify EMT qualified personnel, and carry first aid kits on the line. If a serious medical emergency/accident occurs, notify supervisor, & DIVS, & request the nearest EMT. DIVS will take scene control, assign a point of contact, and notify communications of a medical emergency on command net. Communications will clear all other radio traffic, notify medical unit and safety. Advise communications of nature and extent of injuries, exact location, & nearest drop point or helispot. DIVS or EMT will advise communications of equipment needs. MEDL will coordinate evacuation. If air evacuation is needed, advise immediately of landing area, latitude/longitude and patient weight. Ground transportation or air ambulance will be determined on the type of medical emergency. DO NOT GIVE OUT NAMES OVER RADIO.</p> <p>For Incident within Incident utilize channel NIFC Tac 8 RX: 169.1500</p>							
Prepared by (Medical Unit Leader) Curtis Baker / Andy Isenberg			10. Reviewed by (Safety Officer) Joe Nishikida / Justin Brollier				

Medical – 9 Line Information

Line	Information	Notes
1	Level of Severity	Triage page 48, IRPG - 2011
<input type="checkbox"/>	RED – (Airway obstruction, Difficulty Breathing, Major blood loss, Cardiac Chest pain, Crush injury to the chest, Penetrating object, Open fracture, 2° or 3° burn more than 4 palms)	Code 3 ALS ambulance or Medivac Helicopter Medical radio traffic has priority Emergency radio traffic restricted to: On Site Medical, Division Supervisor or On Scene IC
<input type="checkbox"/>	YELLOW – (Closed fracture, Significant trauma, Lacerations and bleeding no controlled by pressure, Not able to walk, 2° or 3° burn, no more than 1 or 2 palm size)	Ambulance or consider air transport if at remote location Medical radio traffic may have priority as above
<input type="checkbox"/>	GREEN – (Small area abrasions or lacerations, bleeding controlled by pressure, Minor sprain, General sickness)	Ground transport via crew, ground support, field medic or consider air if at remote location Fire radio traffic unchanged
2	Patient Assessment/ Injuries & Treatment	Assessment Page 42, IRPG 2011 Treatment Page 41, 43-47
	Patient # 1 _____ _____ _____	<ul style="list-style-type: none"> • Level of Consciousness • Breathing Rate • Pulse Rate • Skin Condition
	Patient # 2 _____ _____ _____	Injury Bleeding Heat Fracture Burns Head injury Bee Stings Eye Injury
3	Patient Location	Drop Point, Staging area, Division, Spike Camp, Line Area or GPS
	Lat: _____ Long: _____	Set GPS to WGS 84 Use Degrees, Minutes, tenth of Minutes (00°00.00' – 000° .00.00')
4	Special Equipment Needs:	Hoist, SKED, Backboard, Litter, Rope Rescue, Trauma Bag Oxygen, IV Fluids
5	On Scene Medic IC: Whalen	Crew Medic, Field Medic Who is the IC on this incident?
6	AIR GUARD – TX 168.625 / RX 168.625 Command – TX 165.9625N/ RX 170.4125N (NIFC CMD 10) Tactical – TX 169.1500N/ RX 169.1500N (NIFC TAC 8)	What Frequency or channel will the incident be run on?
7	LZ Location / GPS	LZ Area Selection Pages 57, IRPG
	Lat: _____ Long: _____	Set GPS to WGS 84 Use Degrees, Minutes, tenth of Minutes (00°00.00' – 000° .00.00')
	Ground Contact:	
8	LZ Special Hazards	Trees, Power lines, wind direction, slope
9	Patient Affiliation	Agency, Contractor, Military

Training Message

July 11, 2013

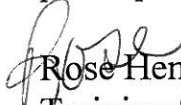
Bison

Hmm. Demob is around the corner...

It is time to close out your training package.

If you have signed up with the Training Specialist, be sure to come in and close out your package. You do not have to wait until you demob...

There is a total of 57 trainees on this fire. Thanks for your assistance and participation in making our wildland fire world the best it can be.


Rose Henderson
Training Specialist

July 9, 2013

Rehab standards on BIA Tribal/Trust properties.

4.5

When suppression action is taken, rehabilitation is appropriate. The most effective rehabilitation measure is prevention of impact through careful planning and the use of minimum impact suppression tactics.

Rehabilitation will be initiated by the Incident Commander or the Natural Resource Officer. Rehabilitation will be directed toward minimizing or eliminating the effects of the suppression effort and reducing the potential hazards caused by the fire:

1. Backfill control lines, scarify, and seed with native species.
2. Install water bars and construct drain dips on control lines to prevent erosion.
3. Install check dams to reduce erosion potential in drainages.
4. ~~Flush cut stumps and camouflage with soil and/or moss.~~
5. Place cut vegetative materials in random positions.
6. Position felled and bucked material so as to be least noticeable to visitors, and camouflage where possible.
7. ~~Restore natural ground contours.~~
8. Remove all flagging, equipment, and litter.
9. Completely restore recreation sites and improved helispots.
10. Consider and plan more extensive rehabilitation or revegetation to restore sensitive impacted areas..

Every effort should be made to avoid further damage of cultural/historic sites, during rehab.

FIRELINE REPAIRS
(Red Rock Fire 7/3/13)

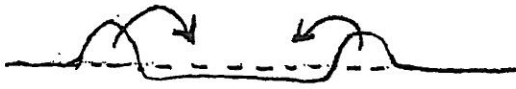
PURPOSE: Treat damages to resources and improvements caused by incident management actions.

Dozer Line

Objective: Restore ground surface to natural shape and contour.

Action: Return all fill, berms, and piles of dirt and rocks to where it was cut from.

Examples:



Notes:

- Use dozers or excavators with enough power to put large boulders back uphill.
- Even if more vegetation has to be disturbed, the priority is to obliterate the cuts and fills and smooth the ground back over. Plants will grow back in much less time than it takes for the cuts, piles, and berms to disappear.
- Water bar slopes to channel water off of the road beds and dozer lines.

Gradient	Spacing Between Water Bars
1%-9%	100 feet
10%-19%	75 feet
20%-39%	50 feet
>40%	25 feet

- Pull back available loose vegetation over bare ground.
- Consult Resource Advisor with questions, problems, or comments.

Dozer Lines which Parallel Roads

Objective: Reclaim dozer line while maintaining the former road bed width.

Action: Return all fill, berms, and piles of dirt and rocks to where it was cut from. Scatter dead trees, dead shrubs or rocks on the reclaimed area when available.

Hand Line

Objective: Prevent water from channeling down the line and eroding soil.

Action: Break through berms or build waterbars wherever needed so water does not flow any farther than 20 feet along the remaining fireline.

Fence Damage

Report to Resource Advisor or Field Observers all places where fences and other improvements have been damaged by fire or incident activities.

UNIT LOG		1. INCIDENT NAME	2. DATE PREPARED	3. TIME PREPARED
4. UNIT NAME/DESIGNATORS.		5. UNIT LEADER (NAME AND POSITION)		6. OPERATIONAL PERIOD
7. PERSONNEL ROSTER ASSIGNED				
NAME		ICS POSITION		HOME BASE
8. ACTIVITY LOG (CONTINUE ON REVERSE)				
TIME	MAJOR EVENTS			

