

Day Shift 7/8/2013

Bison



Incident Action Plan



NV-WNA-030259

GPS FORMAT
DATUM NAD83
DD MM.SS

FINANCIAL CODE
PAHNV1 – FS
HNV1 – BLM



| | | | |
|--|---|---|---|
| Incident Objectives | 1. Incident Name <p style="text-align: center;">BISON</p> | 2. Date Prepared <p style="text-align: center;">07/07/13</p> | 3. Time Prepared <p style="text-align: center;">0717</p> |
| 4. Operational Period <p style="text-align: center;">07/08/13 Monday Day Shift 0600 - 2100</p> | | | |
| 5. General Control Objectives for the incident (include alternatives) <p>Firefighter and Public Safety is first priority. Mitigate for heat injury and exposure.</p> <p>Keep fire south of Stockyard Road, west of Upper Colony and Atesia Road, east of Highway 395, north of Topaz Ranch Estates and Highway 208.</p> <p>Mimize fire impacts to structures in the Pine Nut Creek area (north and west of the fire).</p> <p>Minimize fire impacts to Bi-State Sage Grouse priority habitat.</p> | | | |
| 6. Weather Forecast for Period <p style="text-align: center;">See Spot Weather.</p> | | | |
| 7. General Safety Message <p>Maintain LCES - <u>L</u>ookouts, <u>C</u>ommunications, <u>E</u>scape Routes and <u>S</u>afety Zones.</p> <p>Continuously identify and minimize risks associated with your operations.</p> | | | |
| 8. Attachments (mark if attached) | | | |
| <input checked="" type="checkbox"/> Organization List - ICS 203 <input checked="" type="checkbox"/> Div. Assignment Lists - ICS 204 <input checked="" type="checkbox"/> Communications Plan - ICS205 <input checked="" type="checkbox"/> Medical Plan - ICS 206 <input checked="" type="checkbox"/> Air Operations Summary - ICS 220 | <input checked="" type="checkbox"/> Incident Map <input checked="" type="checkbox"/> Safety Message <input type="checkbox"/> Traffic Plan <input checked="" type="checkbox"/> Training Message <input checked="" type="checkbox"/> Fire Weather | <input checked="" type="checkbox"/> Fire Behavior <input checked="" type="checkbox"/> ICS 215a <input checked="" type="checkbox"/> Unit Log <input type="checkbox"/> <input type="checkbox"/> | |
| 9. Prepared by (Planning Section Chief) Bob Reese | 10. Approved by (Incident Commander) Mike Whalen | | |

| ORGANIZATION ASSIGNMENT LIST | | 9. Operations Section | |
|--|---------------------------------------|------------------------------------|--|
| 1. Incident Name BISON | | Day | Randy Anderson; Mike Friend (t) |
| 2. Date Prepared 07/07/13 | | 3. Time Prepared 1037 | Planning Ops Ken Smihula; Mike Boomer (t) |
| 4. Operational Period 07/08/13 Monday Day Shift 0600 - 2100 | | a. Divisions | |
| Position | | Name | |
| 5. Incident Commander and Staff | | Branch Director | |
| Incident Commander | Mike Whalen | Deputy | |
| Incident Commander (T) | Mark Rosental | Division/Group A | Naman, Thaler (t) |
| Safety Officer | Joe Nishikida; Justin Brollier | Division/Group D | Ellsworth, Rickert (t) |
| Information Officer | Dorothy Harvey | Division/Group G | Platz, Nolan(t) |
| Liaison Officer | Brian L Neilson | Division/Group M | Jones, Palma (t) |
| 6. Agency Representative | | Division/Group | |
| Agency | Name | b. Structure Protection | |
| BIA | Gerry Emm | Branch Director | |
| BLM | Bryant Smith | Deputy | |
| East Fork FPD | Todd Carlini | Pinenut Struction Group | Mike Heikka |
| Lyon County | Rob Loveburg | Smith Valley Group | Matt Donnelly |
| Cal Fire | Mary Huggins | Division/Group | |
| 7. Planning Section | | Division/Group | |
| Chief | Bob Reese | Division/Group | |
| Plans (T) | | Division/Group | |
| Resources Unit | Sandy Gregory; Wade Burleson | Division/Group | Phil Barton |
| Situation Unit | Mark Bohach | Division/Group | |
| Documentation Unit | | Division/Group | |
| Demobilization Unit | | Division/Group | |
| Fire Behavior Analyst | Ken Rogers | Division/Group | |
| Human Resource Specialist | | c. Staging IA | |
| Training Specialist | Rose Henderson | Branch Director | |
| GIS Specialist | J Watermolen; A Brant (t); B Kirk (t) | Deputy | |
| Computer Specialist | Woody Kessler | Division/Group | |
| | | Division/Group | |
| | | Division/Group | |
| | | Division/Group | |
| | | Division/Group | |
| 8. Logistics Section | | Division/Group | |
| Chief | John Houk | d. Air Operations Branch | |
| Deputy | | Air Operations Branch Director | Ray Mockli |
| Supply Unit | Steve Howell | Helibase Manager | Lee Stewart; Josh Fulton(t) |
| Facilities Unit | Scott Richie | Air Attack Supervisor | Ted Mason |
| Ground Support Unit | Bill Tuggle | Air Support Supervisor | Eric Taplin; Glen Dietz(t) |
| Communications Unit | Bryan Granath | Air Attack Supervisor | Everett Weniger |
| Medical Unit | Chris Graves; Andy Eisenburg(t) | Seat Base Manager | Mike Kidwell |
| Security Unit | | 10. Finance Section | |
| Food Unit | | Chief | Darcy Crotteau |
| | | Deputy | |
| | | Time Unit | |
| | | Procurement Unit | |
| | | Compensation/Claims Unit | |
| | | Cost Unit | Chuck Joy |
| | | Prepared by (Resource Unit Leader) | |
| | | Sandy Gregory | |

| Division Assignment List | | 1. Branch | | 2. Division/Group | | | |
|--|---------------------------------|--|---|--------------------------------|---------------------------|-----------------------|---------|
| 3. Incident Name BISON | | 4. Operational Period 07/08/13 Monday Day Shift 0600 - 2100 | | | | | |
| 5. Operations Personnel | | | | | | | |
| Operations Chief | RANDY ANDERSON; MIKE FRIEND (t) | | Division/Group Supervisor | JONES, CASEY; JOHN PALMA (t) | | | |
| Planning Operations | KEN SMIHULA; MIKE BOOMER (t) | | Air Attack Supervisor | TED MASON; JOSH FULTON (t) | | | |
| Branch Director | | | Safety Officer | JOE NISHIKIDA; JUSTIN BROLLIER | | | |
| 6. Resources Assigned this Period | | | | | | | |
| Strike Team/Task Force/ Resource Designator | Leader | Num of Pers. | Trans. Y/N | Drop Off PT./Time | Pick Up PT./Time | | |
| CREW - T1 - TRUCKEE IHC | HUBBY | 20 | N | 0600 | 2100 | | |
| CREW - T2IA - GRAYBACK 12A | NYSETH | 20 | N | 0600 | 2100 | | |
| CREW - T2 - AMERICORP | GOODWIN | 24 | N | 0600 | 2100 | | |
| CREW - T2 - EASTERN SIERRA | MENNA/LUCY | 23 | N | 0600 | 2100 | | |
| CREW - T2 - TONOPAH #1 | MORGAN/DORY | 27 | N | 0600 | 2100 | | |
| CREW - T2 - PIOCHE #2 | HOLT/NELSON | 27 | N | 0600 | 2100 | | |
| ENGINE-T3 - NDF 5121 | KAISER | 3 | N | 0600 | 2100 | | |
| ENGINE-T3 - NDF 5102 | FOSTER | 3 | N | 0600 | 2100 | | |
| 7. Control Operations | | | | | | | |
| Construct and secure hand line from AM break, towards M/G break. | | | | | | | |
| 8. Special Instructions | | | | | | | |
| Utilize air resource as needed/necessary. Avoid using dozer on Indian Trust Land. Hydrate - Maintain LCES. | | | | | | | |
| 9. Division/Group Communications Summary | | | | | | | |
| Function | Frequency - RX | Frequency - TX | Tone | System | Channel | System | Channel |
| Command | 168.0750 | 170.4250 | 131.8 | | 11 | | |
| Tactical Div/Group | 168.6000 | 168.6000 | | | Tac 3 | | |
| Logistics | | | | | | | |
| Air to Ground | 166.7500 | 166.7500 | | | 9 | | |
| Prepared by (Resource Unit Leader) Sandy Gregory | | | Approved by (Planning Section Chief) Bob Reese | | Date Prepared 07/07/13 | Time Prepared 1037 | |

AIR OPERATIONS SUMMARY

Prepared By: W. Ray Mockli AOB D Prepared Date/Time: 7/7/2013/21:00

| | | | | | | | | | |
|---|--|---|--|---|------------------|-----------------|----------------|--|--|
| 1. INCIDENT NAME: Bison | | 2. OPERATIONAL PERIOD DATE: 7/8/2013 | | Start Time 7:00 | End Time 9:00 | Sunrise 5:40 | Sunset 8:27 | | |
| 3. REMARKS (Safety Notes, Hazards, Air Operations Special Equipment,, etc.): Busy Airport, Gliders, and close proximity of fire will require increased awareness to mitigate complexity. IA responsibility within our TFR. 259 Retardant has been ordered for SEAT and Helitankers as needed. Proposed New TFR Corners SW 38 48' 52.7 119 34'14.9 NW 38 57'50.85 119 32'50.96 NE 38 58'04. 83 119 24'55.06 SE 38 49'00.77 119 26'44.71 | | | | 4. MEDEVAC A/C: 2AH or available aircraft | | | | 5. TFR DESCRIPTION: frequency 123.175 | |

| 6. PERSONNEL | Phone | 7. FREQUENCIES | AM | FM | 8. FIXED-WING (# Avail / Type/ Make-Model / FAA # / Base(s)) |
|-------------------------|--------------|----------------------|----------|----------|--|
| AOBD W. Ray Mockli | 208-409-1440 | A/A PRIMARY | 123.1750 | | Airtankers |
| ATGS Ted Mason | 208-921-3245 | A/A SECONDARY A-40 | 132.0250 | | Order thru ATGS or OPS |
| ASGS Eric Taplin | 208-634-9425 | AIR/GROUND primary | | 166.7500 | Leadplanes |
| ASGS (t) Glenn Dietz | 530-227-0017 | AIR/GROUND secondary | | 168.5375 | Order thru ATGS or OPS |
| HEB1 Lee Stewart | 775-220-6364 | | | | ATGS |
| HEB1 (t)Erich Gleckler | 208-308-4169 | | | | |
| SEBM Mike Kidwell (UAM) | 775-721-3764 | | | | 975AA, 7LK assigned, Please RON Minden! |
| ATGS Everett Weniger | 406-381-4176 | DECK | | 163.1000 | SEAT |
| ATGS (t) Josh Fulton | 702-218-8502 | TOLC | | | Order thru ATGS or OPS 828,871,894,893,883 |

| 9. HELICOPTERS (Use Additional Sheets As Necessary) | | | | | | | | | | | | | |
|---|------|------------|----------|-------|-------|-------------|-------|------|------------|------|-------|-------|---------|
| FAA # | TYPE | MAKE/MODEL | BASE | AVAIL | START | REMARKS | FAA # | TYPE | MAKE/MODEL | BASE | AVAIL | START | REMARKS |
| 218AC | 1 | S-64 | Helibase | 7:00 | 8:00 | (HT741) A-3 | | | | | | | |
| 190CH | 1 | BV 107 | Helibase | 7:00 | 8:00 | A-37 | | | | | | | |
| 212AH | 2 | Bell 212 | Helibase | 7:00 | 8:00 | CWN A-6 | | | | | | | |
| 490SA | 2 | Bell 205++ | Helibase | 7:00 | 8:00 | (516) A-7 | | | | | | | |
| 205SJ | 2 | Bell 205 | Helibase | 7:00 | 8:00 | CWN A-23 | | | | | | | |
| 73HJ | 2 | Bell 212HP | Helibase | 7:00 | 8:00 | A-29 | | | | | | | |
| 610WW | 2 | Bell 210 | Helibase | 7:00 | 8:00 | (506) A-30 | | | | | | | |
| 407DP | 3 | 407 | Helibase | 7:00 | 8:00 | (503) A-43 | | | | | | | |



INCIDENT Weather Forecast



FORECAST NO: 2

NAME OF FIRE: Bison Fire

PREDICTION FOR: Day SHIFT

UNIT: BIA

SHIFT DATE: 7/8/13
0600 - 1800 PDT

SIGNED: Dan Harty

Incident Meteorologist

TIME AND DATE

FORECAST ISSUED: 2000 PDT 7/7/13

...DRY...UNSTABLE...WITH GUSTY AFTERNOON AND EVENING WINDS...

WEATHER DISCUSSION: High pressure over the four corners region will maintain a dry southwesterly flow aloft with little day to day change in conditions through Tuesday. Overnight humidity recovery will remain poor. Winds will become breezy and gusty each afternoon and continue into the evening. A trough of low pressure is forecast to approach the northern California coast midweek which may bring an increase in gusty winds Wednesday and Thursday. There is about a 10 percent chance at this time that a few isolated thunderstorms will be possible by Wednesday or Thursday.

WEATHER FORECAST for MONDAY:

WEATHER: Mostly sunny.

MAX TEMPERATURES: 81-86 mid slope and ridge tops...88-92 lower elevations.

MIN HUMIDITY: 8-15 percent.

20 FT WINDS:

SLOPE/VALLEY - Upslope 3-7 mph in the morning becoming southwest to west 10-15 mph with gusts around 25 mph after 12 pm.

RIDGETOP - South to Southwest around 10 mph in the morning...increasing to 15-20 mph with Gusts to around 30 mph after 12 pm.

HAINES INDEX: 6

MONDAY NIGHT: Mostly clear. Ridgetop winds southwest 15-20 mph with gusts to 30 mph in the evening. Winds decreasing to 5-10 mph by midnight. Lower elevations southwest to west 10 to 15 mph with gusts to 25 mph in the evening...becoming downslope after 10 pm. Minimum temperatures 55-61. Poor humidity recoveries of 20-30 percent.

OUTLOOK FOR TUESDAY THROUGH THURSDAY: High pressure will remain in control on Tuesday with little change in conditions from Monday. A weak trough of low pressure will move into the region Wednesday and lower temperatures slightly through Thursday. But dry conditions will persist with poor overnight humidity recoveries. Breezy and gusty southwest to west winds will continue to develop each afternoon and could become a little stronger as the low pressure trough moves into the region midweek.

FIRE BEHAVIOR FORECAST

| | |
|---------------------------|---|
| FORECAST NUMBER: 3 | TYPE OF FIRE: Wildland Fire |
| FIRE NAME: Bison | OPERATIONAL PERIOD: Day Shift, July 8, 2013 |
| DATE ISSUED: July 7, 2013 | TIME ISSUED: 2200 |
| UNIT: BIA / Multi | SIGNED: /s/ Ken Rodgers FBAN <i>Ken Rodgers</i> |

INPUTS

WEATHER SUMMARY:

Hot, dry and unstable conditions with breezy afternoon winds

See attached Fire Weather Forecast.

OUTPUTS

FIRE BEHAVIOR

GENERAL:

Activity experienced yesterday on the north side of the fire is expected to continue with daytime heating, drying, and afternoon winds combining their effects. Smoldering and surface burning in grass, sagebrush, mountain brush and pinyon-juniper are expected to increase with morning warming. Intense burning is expected in the early afternoon with fire spread influenced primarily by wind, fuels and topography. Tree torching, sustained crown runs and spotting up to ¼ mile plus is the expected fire activity in the afternoon in pinyon-juniper and brush patches. Burning intensity has subsided around sundown, but has continued into the night because of dry fuels and poor humidity recovery on ridges and slopes.

SPECIFIC:

Division A & M: These divisions could experience low to moderate activity depending on the time since burning occurred. Smoldering and hot spots are likely along the perimeter and within the interior.

Division D: This division could experience intense to extreme activity because of heavy fuel loading and exposure to ridgetop and prevailing winds. The fire is well established in new areas from yesterday's northerly run. The fire could spread rapidly downslope with gusty high winds that occur at the ridgetops.

Division G: This division could experience low to moderate activity depending on the time since burning occurred. Smoldering and hot spots are likely along the perimeter and within the interior.

Initial Attack Actions: Potential for intense burning and rapid spread on new starts in all fuel types in the response area.

AIR OPERATIONS:

Visibility for air operations should be good, although somewhat smokey over the fire area prior to 10 am. Turbulence can be expected with afternoon winds over the fire and dipsites. Elevation and high air temperatures can limit aircraft performance. Blowing dust, ash and dustdevils are likely with afternoon winds.

SAFETY

Remember Watch Out Situation
"Terrain and Fuels Make it Difficult to Reach Safety Zones"

Local Thresholds – Watch Outs
20' wind speeds greater than 15 mph, RH below 10%, Temps >90, Woody Fuel Moisture <120

Forecasted ERC is 89, close to the 90th percentile and trending upward

INCIDENT RISK ANALYSIS (215a 07-08-2013)

| Div | Hazardous Actions or Mitigations | Mitigations /Warnings/Remedies ** Denotes Common Denominator of Tragedy Fires |
|-------|---|---|
| ALL | Downhill Fireline Construction Under-slung Fire line Construction Mid-slope Fire line Construction Frontal Attack Anchor Points Extreme Conditions/Weather Light Fuels** Uphill Runs** Small→Large Fire** | <ul style="list-style-type: none"> • LCES • Review weather conditions • Review fire activity in relation to fuels, topography, aspect, slope and weather • Establish, maintain and reevaluate all anchor points • Establish decision points to implement change or alter actions • For extreme conditions and weather, establish alternatives (time tag critical situations) |
| A / M | Transportation | <ul style="list-style-type: none"> • Consider alternate road or alternate method of transportation if width of road, lack of turnarounds and proximity to fire are a concern • When driving, maintain safe and situational awareness. |
| A / G | Emergency Transport | <ul style="list-style-type: none"> • Medivac – Staffed PM/EMT on scene with prepositioned Stokes/equip. • Use of Stokes escalator technique to ground transport if helicopter does not work |
| ALL | Structure Protection | <ul style="list-style-type: none"> • Situational Awareness - preplan exit strategy, fire protection actions, fire suppression actions if appropriate and |
| ALL | Spotting Torching | <ul style="list-style-type: none"> • Watch for smoldering fires picking up over large areas, trees crowning out inside of fireline, high sustained rate of spread, well-developed convection column, hot/dry weather • Patrol for spots especially after torching • Post lookouts • Grid green areas |
| ALL | RH<25% Drought Temps >85F Direct Sun Dead / dying Fuels Freeze-Dried Fuels Fuel Loads >10T/Ac Winds>10MPH** | <ul style="list-style-type: none"> • Watch potential for torching, spotting, re-burn, and erratic, extreme fire behavior • Staff dedicated lookouts at pre-identified vantage points • Take hourly weather observations over command frequency • Establish effective radio repeaters to reach all divisions. Confirm radio frequencies • Consider vegetation and terrain and flag and time multiple escape routes and improve/construct safety zones |
| ALL | Slopes>50% Rolling Rocks | <ul style="list-style-type: none"> • Identify chimneys, gullies, and/or steep slopes in work area • Post lookouts, issue warnings • Improve/construct, flag/time escape routes and safety zones • Identify, flag, avoid rock hazards • Keep crews from below known hazard areas • Wear proper and good condition fire boots to avoid slips and falls. • Identify safe routes and maintain 10 feet spacing • Make sure you go slowly and watch your step • Always carry tools on the downhill side. |
| ALL | Dehydration Heat Stress | <ul style="list-style-type: none"> • Drink plenty of fluids (1 qt/hr); • Ensure adequate replacement water supplies • Discourage use of energy drinks • Pace work; allow frequent periods of rest in shade, if possible • Limit shift lengths • Acclimate to extreme heat; schedule hardest work during cooler hours of the day • Monitor fitness of crews for assignments |
| ALL | Chain Saw Operations | <ul style="list-style-type: none"> • Use chain guards when transporting saws, DO NOT drop start saws! • Only employees who are trained and certified will operate chain saws under any conditions. • No employee shall approach a felling operation closer than 3 tree lengths of the tree being felled. • Low speed saw injuries may indicate inattention (possibly due to dehydration) • Use swampers, watch spacing, wear all PPE. |
| ALL | Air Ops | <ul style="list-style-type: none"> • SA on retardant drops (tankers and Helicopter) • Maintain radio contact with air assets to ensure clear drop areas • Give feedback to air assets and line crews |
| ALL | Mine Shafts | <ul style="list-style-type: none"> • Warn ground forces, scout work areas, flag any that are found and inform others. |
| ALL | Hazardous Materials | <ul style="list-style-type: none"> • Burning household products and possible Meth Labs • Identify and protect residential propane, liquid fuel |

HEALTH AND SAFETY MESSAGE

SAFETY starts with **YOU**

We are ALL accountable for SAFE behaviors

INCIDENT: Bison Fire

DATE: 07/08/2013

Oper. Period: Day

Major Hazards and Risks:

- * Steep terrain
- * Loose Rocks
- * Damaged Trees (Snags)
- * Travel Routes
- * Wildlife
- * Hidden Mines / Hazards
- * Extreme Fire Behavior
- * Hydration Issues
- * Spike Access

Safety is Attitude, Risk Assessment and Situational Awareness

Narrative:

Situational Awareness should be included in all the activities you are doing

Risk Assessment is used to determine if what you are doing is too risky and alternatives need to be looked into

Attitude should be team based for the good of all and the goal of your tactics



Common Denominators of Wildfire Behavior

- Most incidents happen on smaller fires or on isolated portions of larger fires.
- Most fires are innocent in appearance before unexpected shift in WINDS DIRECTIONS and/or SPEED results in flair-ups or extreme fire behavior. Even in mop up operations.
- Flareups generally occur in deceptively light fuels such as grass and light brush. Fires run up hill surprisingly fast in chimneys, saddles, gullies and steep grades.
- Some suppression tools, such as helicopters and air tankers can adversely affect fire behavior.
- Blasts of air from low flying helicopters and air tankers have been known to cause flare-ups.

Incident Safety Officer: Joe Nishikida SOF2 Justin Brollier SOF2

Line Officers: Chris Graves(t), Rob Hickok, Scott Johnson

| | | | | | | | |
|--|--|----------------------------------|--------------------------|---|-------------------|-----------------------|---|
| MEDICAL PLAN | 1. Incident Name Bison Fire | 2. Date Prepared July 8, 2013 | 3. Time Prepared 0600 | 4. Operational Period 0600-2100 | | | |
| 5. Incident Medical Aid Station | | | | | | | |
| Medical Aid Stations | Location | | | Paramedics Yes No | | | |
| Bison Fire ICP | ICP (N 38°54'14" W 119°40'37") | | | X | | | |
| | | | | | | | |
| | | | | | | | |
| 6. Transportation | | | | | | | |
| A. Ambulance Services | | | | | | | |
| Name | Address | Phone | Paramedics Yes No | | | | |
| EFFPD | Gardnerville, NV | 775-782-9735 | X | | | | |
| REMSA AIR (Care Flight) | Reno, NV, Truckee, CA, Gardnerville, NV | 775-782-9735 | X | | | | |
| Cal Star (Air Ambulance) | South Lake Tahoe | 775-782-9735 | X | | | | |
| | | | | | | | |
| | | | | | | | |
| B. Incident Ambulances | | | | | | | |
| | | | | | | | |
| TBA | Buckeye Road staging | | x | | | | |
| | | | | | | | |
| 7. Hospitals | | | | | | | |
| Name | Address | Travel Time Air Ground | | Phone | Helipad Yes No | Burn Center Yes No | |
| CVMC | 1107 Hwy 395, Gardnerville NV (N 38°55'9" W 119°43'7") | 10 | 15 | 775-782-1600 | x | | x |
| CTRCM | 1600 Medical Pky, Carson City NV (N 39°12'7" W 119°47'2") | 20 | 40 | 775-886-6966 | x | | x |
| Renown (Trauma) | 1155 Mill St. Reno, NV (N 39°31'30" W 119°47'39") | 30 | 60 | 775-982-2005 | x | | x |
| UC Davis | Sacramento, CA (N 38°33'07" W 121°27'19") | 60 | 3hr | 916-734-2011 | x | | X |
| | | | | | | | |
| 8. Medical Emergency Procedures | | | | | | | |
| <p>All engines & crews identify EMT qualified personnel, and carry first aid kits on the line. If a serious medical emergency/accident occurs, notify supervisor, & DIVS, & request the nearest EMT. DIVS will take scene control, assign a point of contact, and notify communications of a medical emergency on command net. Communications will clear all other radio traffic, notify medical unit and safety. Advise communications of nature and extent of injuries, exact location, & nearest drop point or helispot. DIVS or EMT will advise communications of equipment needs. MEDL will coordinate evacuation. If air evacuation is needed, advise immediately of landing area, latitude/longitude and patient weight. Any medicals on DIV G will be extracted by an air ambulance at DIV G Helispot (N 38° 54'37" x 119° 30'78"), and any medicals on DIV A, D, or M can be extracted by vehicle or helicopter depending on the type of medical emergency. DO NOT GIVE OUT NAMES OVER RADIO. For Incident within Incident utilize channel NIFC Tac 8 RX: 169.1500</p> | | | | | | | |
| Prepared by (Medical Unit Leader) Curtis Baker / Andy Isenberg | | | | 10. Reviewed by (Safety Officer) Joe Nishikida / Justin Brollier | | | |

Incident Communication Center Protocol Standard Elements

COML/designee will ensure the following information is obtained and recorded during medical emergencies:

For medical emergencies en route to fire, or on the line:

1. Determine the nature/severity of the emergency.
2. If the medical emergency is severe, request that command be cleared for emergency traffic.
3. Contact Operations, Air Operations, Safety Officer, and Medical Unit Leader.
4. Identify on scene Point of Contact by resource and last name (i.e. contact is TFLD Smith).
5. Identify on scene medical personnel by position and last name (i.e. EMT Jones).
6. Determine:
 - A. Nature of incident
 - B. Number injured/ill
 - C. Location (geographic and GPS Coordinates)
 - D. Method of transport
7. Record patient assessments.
8. Assist making contact to appropriate dispatch centers with Medical Unit Leader.
9. Determine if any additional resources and/or equipment are needed.
10. Document all information received and transmitted on the radio or phone.
11. Document any changes in Point of Contact and medical personnel as they occur.
12. Do not transmit the patient's name on the radio.

For medical emergencies in camp/off-site:

1. Determine the nature/severity of the emergency.
2. If the medical emergency is severe, request that command be cleared for emergency traffic.
3. Contact Safety Officer and Medical Unit Leader.
4. Identify on scene medical personnel by position and last name (i.e. EMT Jones).
5. Determine:
 - E. Nature of incident
 - F. Number injured/ill
 - G. Location in camp
 - H. Method of transport
6. Record patient assessments.
7. Assist making contact to appropriate dispatch centers with Medical Unit Leader.
8. Determine if any additional resources and/or equipment are needed.
9. Document all information received and transmitted on the radio or phone.
10. Document any changes in Point of Contact and medical personnel as they occur.
11. Do not transmit the patient's name on the radio.

Prepared by (Medical Unit Leader)
Curtis Baker/ Andy Isenberg

Reviewed by (Safety Officer)
Joe Nashikida/ Justin Brollier

Incident Radio Communications Plan

1. Incident Name
BISON

2. Operational Period
07/08/13 **Monday** Day Shift 0600 - 2100

3. Basic Radio Channel Utilization

| Radio Type | Channel | Function | Frequency/Tone | | Assignment | Remarks |
|------------|---------|-------------|----------------|--------------|---------------|---------|
| NIFC | 1 | Tactical | RX 168.0500N | TX 168.0500N | Division A | |
| | | | N/A | | | |
| NIFC | 2 | Tactical | RX 168.2000N | TX 168.2000N | Division G | |
| | | | N/A | | | |
| NIFC | 3 | Tactical | RX 168.6000N | TX 168.6000N | Division M | |
| | | | N/A | | | |
| NIFC | 4 | Tactical | RX 166.7250N | TX 166.7250N | Div A Nights | |
| | | | N/A | | | |
| NIFC | 5 | Tactical | RX 166.7750N | TX 166.7750N | Div M Nights | |
| | | | N/A | | | |
| NIFC | 6 | Tactical | RX 168.2500N | TX 168.2500N | Unassigned | |
| | | | N/A | | | |
| NIFC | 7 | Tactical | RX 166.6750N | TX 166.6750N | Unassigned | |
| | | | N/A | | | |
| NIFC | 8 | Tactical | RX 169.1500N | TX 169.1500N | Safety/Med | |
| | | | N/A | | | |
| NIFC | 9 | Air/Grn 21 | RX 166.7500N | TX 166.7500N | All Divisions | |
| | | | N/A | | | |
| NIFC | 10 | AIR/GN 39 | RX 168.5375N | TX 168.5375N | ALL DIVS | |
| | | | N/A | | | |
| NIFC | 11 | NIFC CMD 3 | RX 168.0750N | TX 170.4250N | Division A/M | |
| | | | 131.8 | | | |
| NIFC | 12 | NIFC CMD 10 | RX 170.4125N | TX 165.9625N | All Divisions | |
| | | | 100.7 | | | |
| NIFC | 13 | NIFC CMD 26 | RX 163.3375N | TX 171.7500N | SMITH VLY | |
| | | | 131.8 | | | |
| NIFC | 14 | HTF HAWKNS | RX 169.8750N | TX 170.4750N | All Divisions | |
| | | | 131.8 | | | |
| NIFC | 15 | EMPTY | | | | |
| | | | | | | |
| NIFC | 16 | AIR GUARD | RX 168.6250N | TX 168.6250N | All Divisions | |
| | | | N/A | | | |

4. Prepared by (Communications Unit)

Bryon S. Granath

5. Date Prepared

07/07/13

6. Time Prepared

2117

July 8, 2013
Bison Fire, NV-WNA59-302
Training Specialist Report

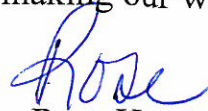
"Excellence is an art won by **training** and habituation. We do not act rightly because we have virtue or excellence, but we rather have those because we have acted rightly. We are what we repeatedly do. Excellence, then, is not an act but a habit." Aristotle

A visit to the Training Specialist is an important part of a trainee's (and trainer) learning experience. This process ensures the trainee is getting what he/she needs to succeed to become a positive reinforcement to wildland fire. It is also a positive mentoring process that assures the trainee will succeed as both the trainee and trainer will have a good understanding of what the trainee needs to work on, and gives the trainee's home unit an idea of how the trainee is progressing when they receive the trainer's evaluation.

The Training office is available for business immediately after the morning briefing to 2200, earlier or later if need be, just let me know.

Trainees and Trainers – just a reminder to make sure you visit with your Training Specialist during the demob process so we can ensure your hard work, mentoring and dedication can be recognized through the evaluation process.

Thanks for your assistance and participation in making our wildland fire world the best it can be. ☺

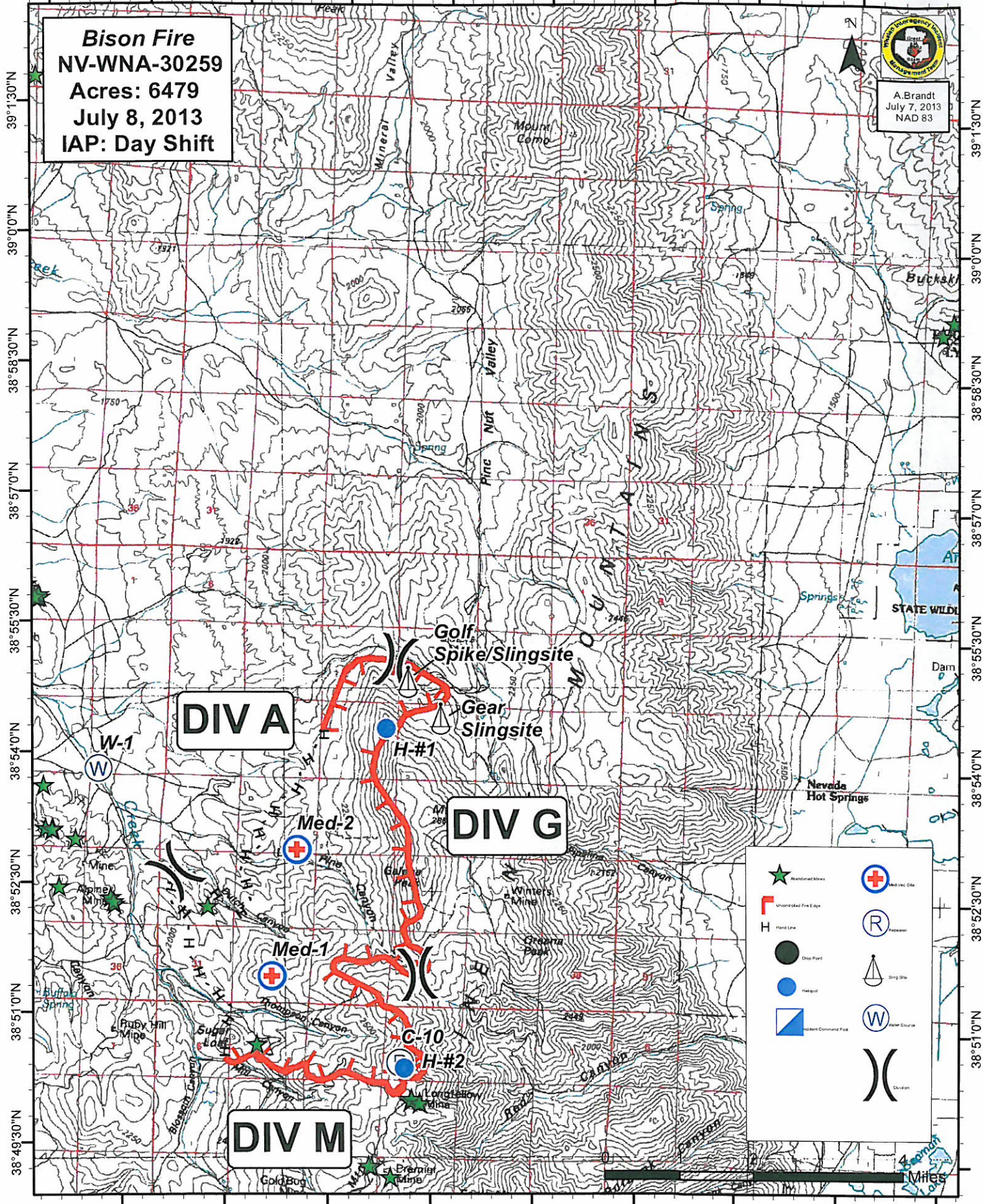


Rose Henderson, TNSP
Great Basin Team 3
Whalen Type 2 IMT

119°36'0"W 119°34'30"W 119°33'0"W 119°31'30"W 119°30'0"W 119°28'30"W 119°27'0"W 119°25'30"W 119°24'0"W

Bison Fire
NV-WNA-30259
Acres: 6479
July 8, 2013
IAP: Day Shift


A.Brandt
July 7, 2013
NAD 83



39°1'30"N
39°0'0"N
38°58'30"N
38°57'0"N
38°55'30"N
38°54'0"N
38°52'30"N
38°51'0"N
38°49'30"N

119°34'30"W 119°33'0"W 119°31'30"W 119°30'0"W 119°28'30"W 119°27'0"W 119°25'30"W 119°24'0"W

