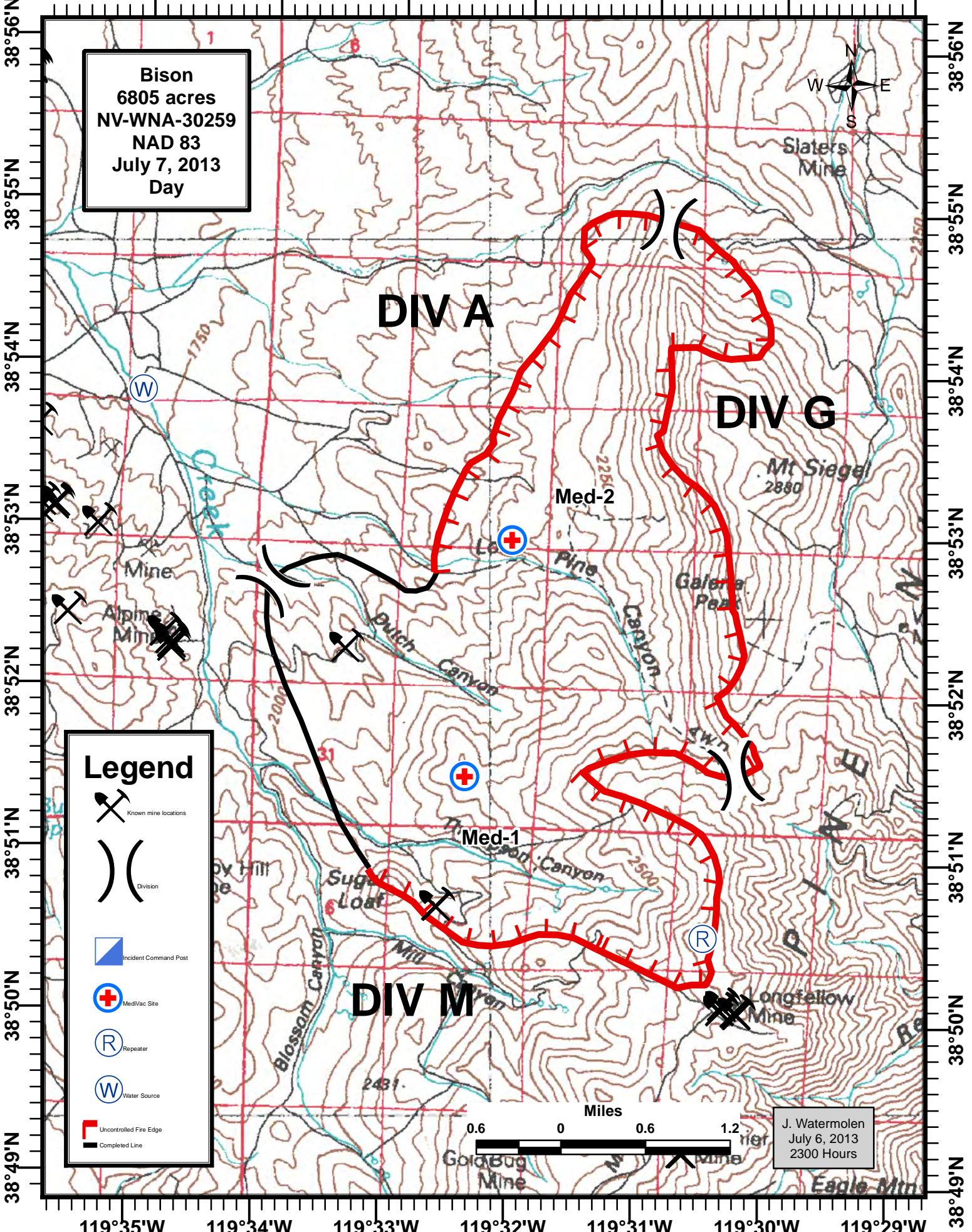


119°35'W 119°34'W 119°33'W 119°32'W 119°31'W 119°30'W 119°29'W



**Bison**  
6805 acres  
NV-WNA-30259  
NAD 83  
July 7, 2013  
Day



**DIV A**

**DIV G**

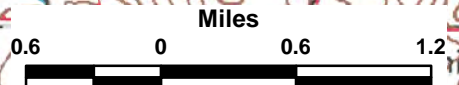
**DIV M**

**Legend**

- Known mine locations
- Division
- Incident Command Post
- Med/Vac Site
- Repeater
- Water Source
- Uncontrolled Fire Edge
- Completed Line

Med-2

Med-1



J. Watermolen  
July 6, 2013  
2300 Hours

119°35'W 119°34'W 119°33'W 119°32'W 119°31'W 119°30'W 119°29'W